

LAGER



Siteplan
1:500



Important points in Trafaria.



"Entrances" to Trafaria.



Big roads in Trafaria.



High points in Trafaria.



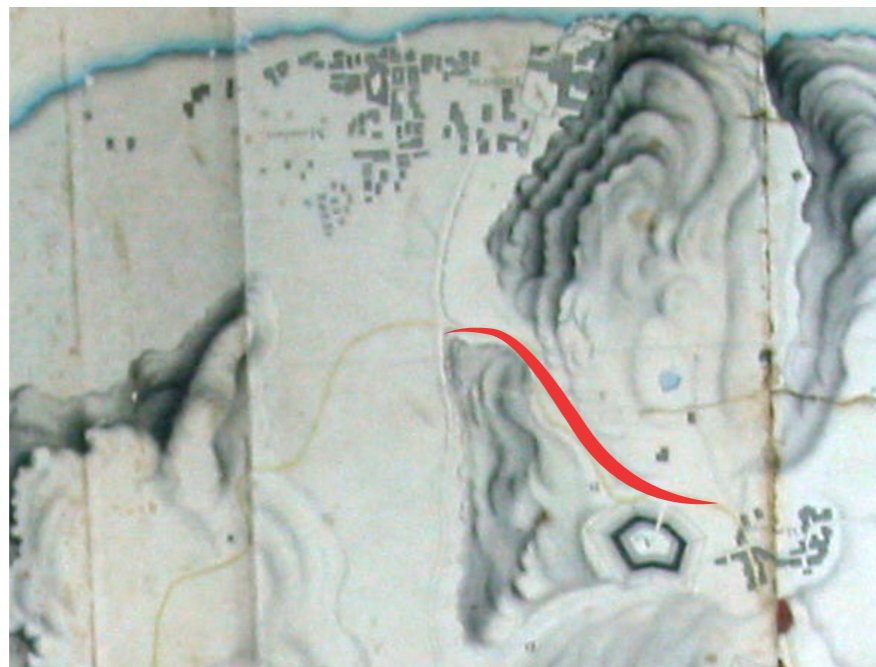
Chosen location for infobox.

TRAFARIA

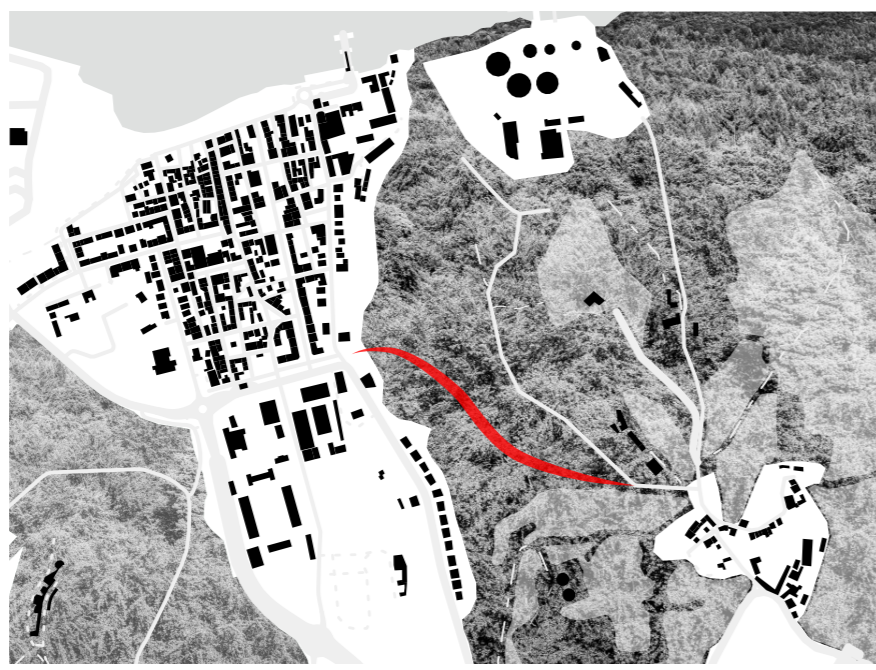
The chosen location for the infobox *Lager* is on the hillside in the east of Trafaria. The site is on the border between what will be the new and the old parts of town and has a view of the whole of Trafaria. It is a highly visible location due to its proximity to the big road and one of the towns main entrancepoints. As of now the hill is unused and its spectacular viewpoints are hard to reach. By making the hill available to locals and visitors alike *Lager* works like a mediator between new and old, creating a new public space for all showing that the new areas are meant to be enjoyed by everyone.

REBUILDING THE OLD ROAD

During the 19th century there was a road going up the hill in Trafaria connecting the town with Murfacém. By finding the remains and rebuilding this road as a walking path the two towns are once again connected and the hill becomes accessible and usable. The Infobox is placed at the beginning of the road where it is visible and has a good view out over the new area being built. The infobox becomes a pitstop where visitor can stop by and learn more about whats happening in Trafaria during their hike up the hillside.



19th century map of road connecting Trafaria with Murfacém.



Location of rebuilt road in Trafaria today.



Layering of different maps of Trafaria from different timeperiods.

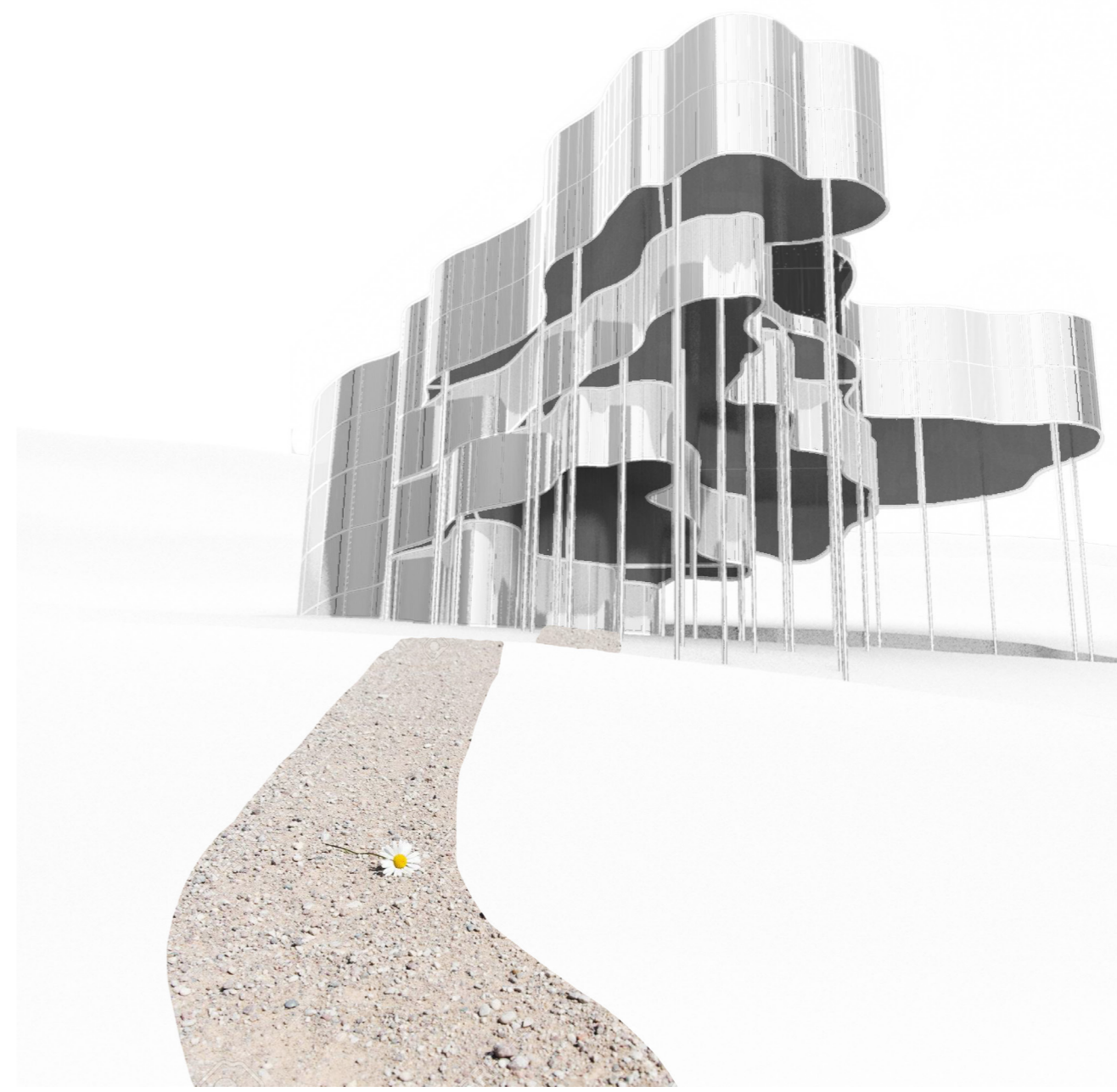
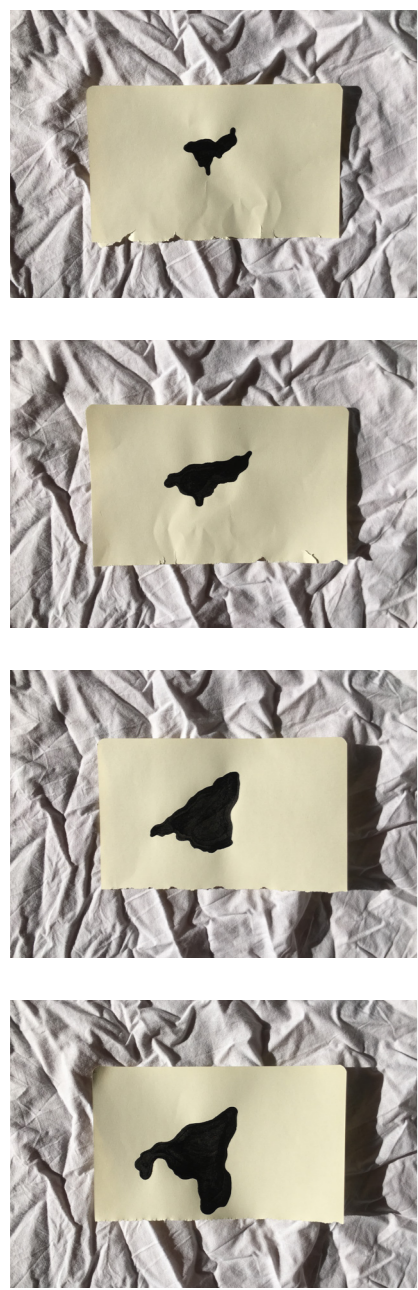
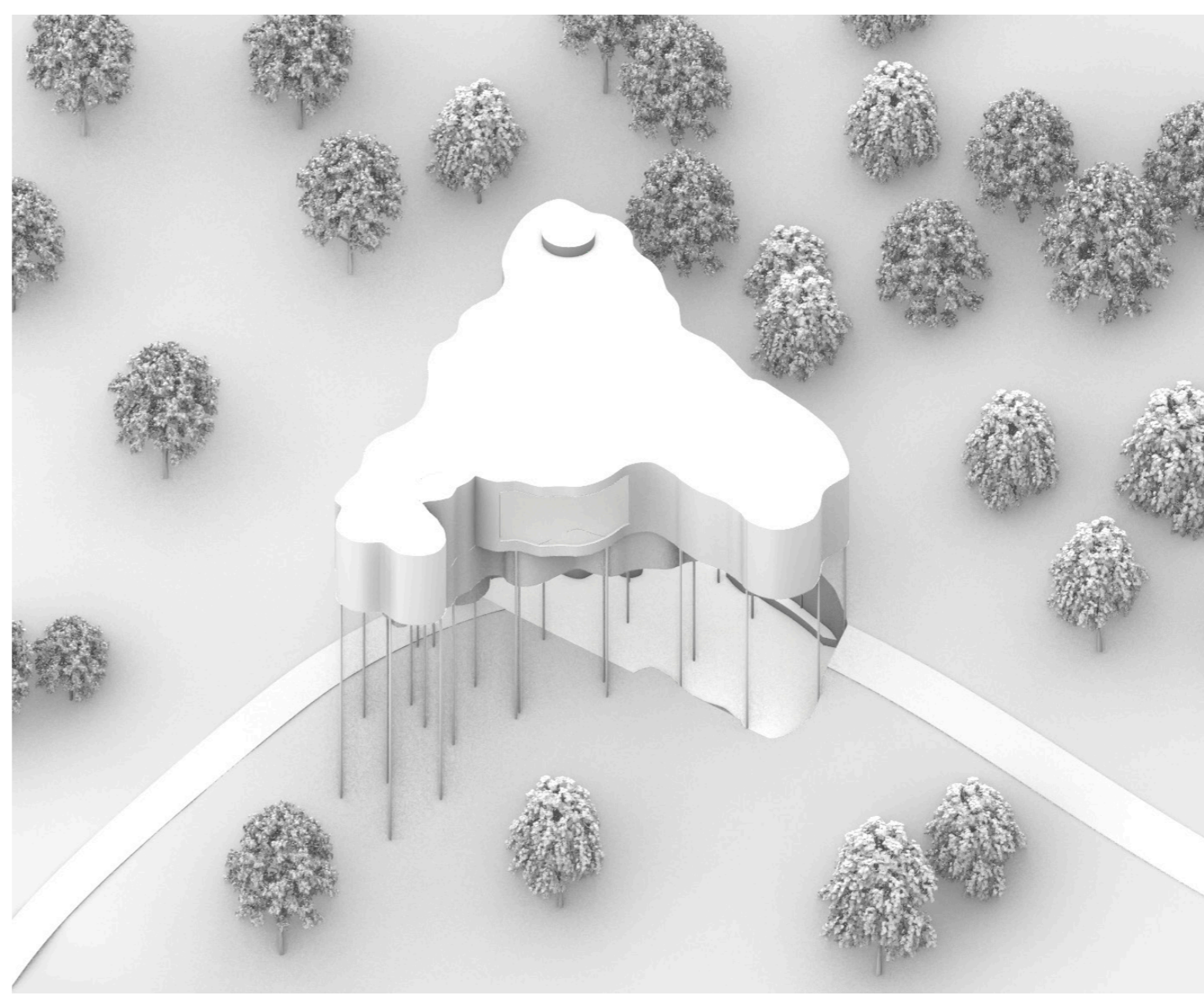
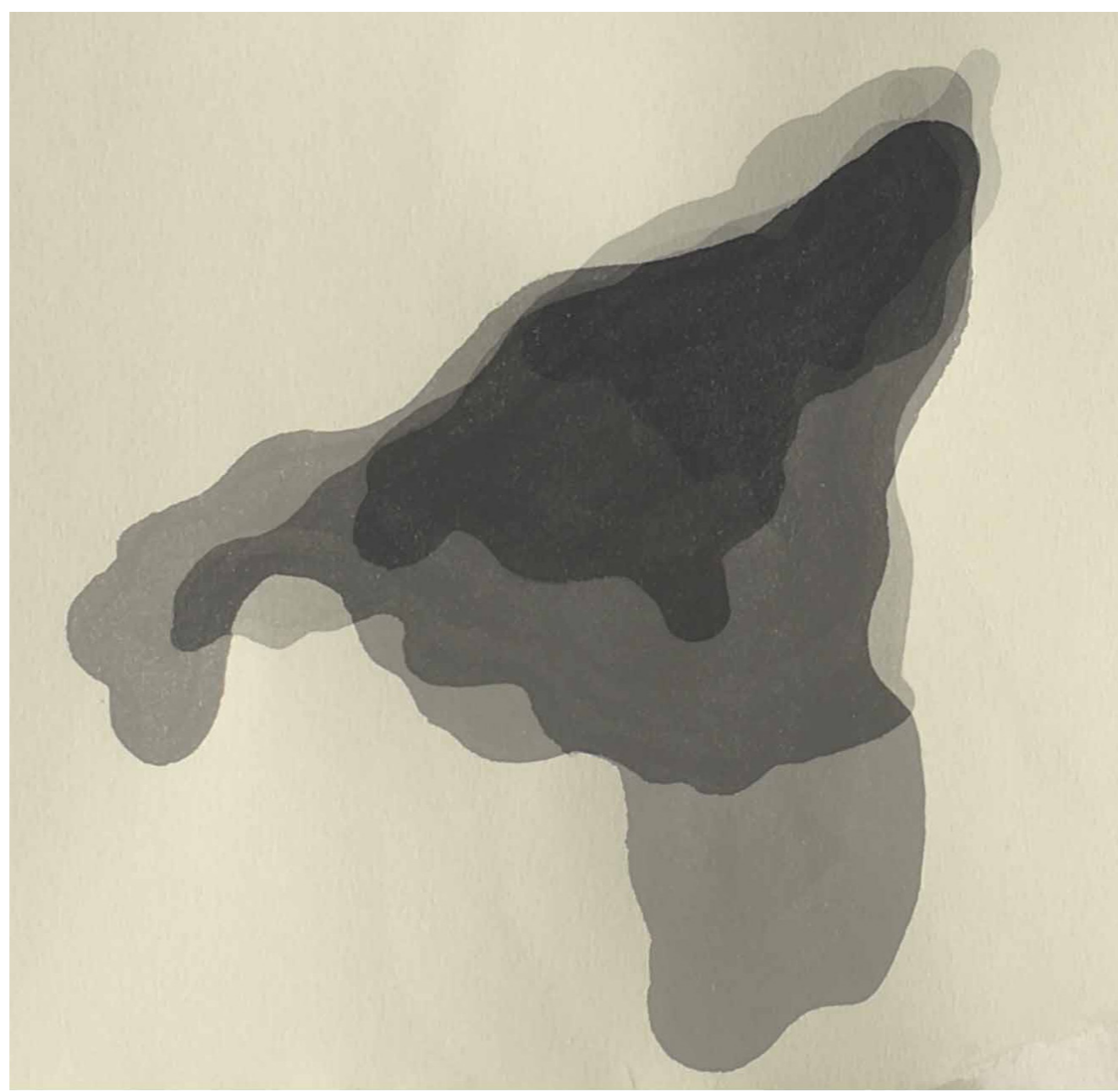


Illustration of the infobox.



Inksketches of Trafarias geographical footprint from different stages of development.

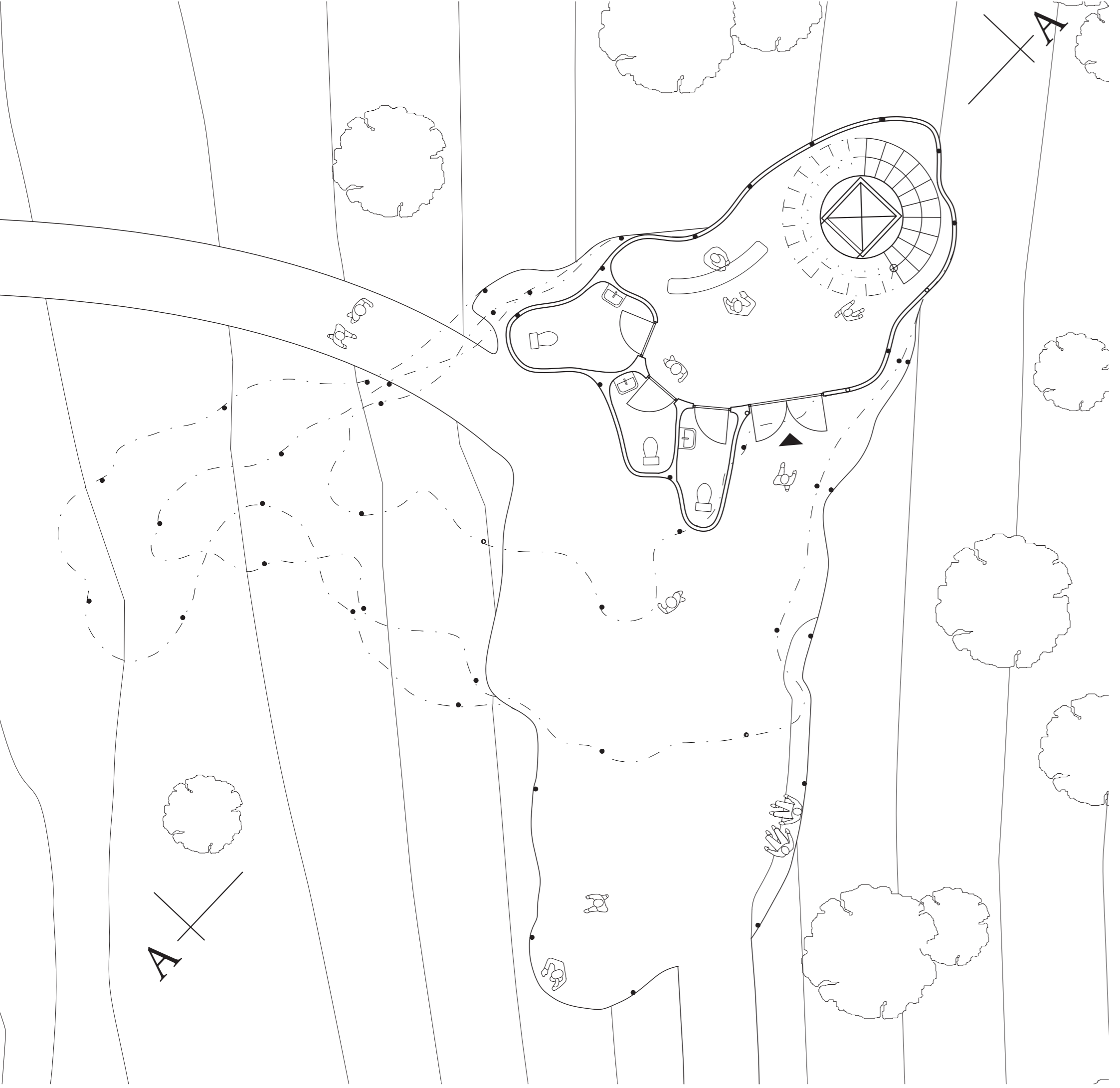


Axonometry of the infobox.

LAYERS OF TRAFARIA

The physical shape of *Lager* is a representation of Trafarias geographical expansion. Different stages of Trafarias growth has been roughly sketched in chinese ink and then layered on top of each other. This layering was then explored in three dimensions resulting in a top heavy form reaching up and out from the slope. It is an undulating form that grows upwards and outwards, expressing the continuing growth of Trafaria.

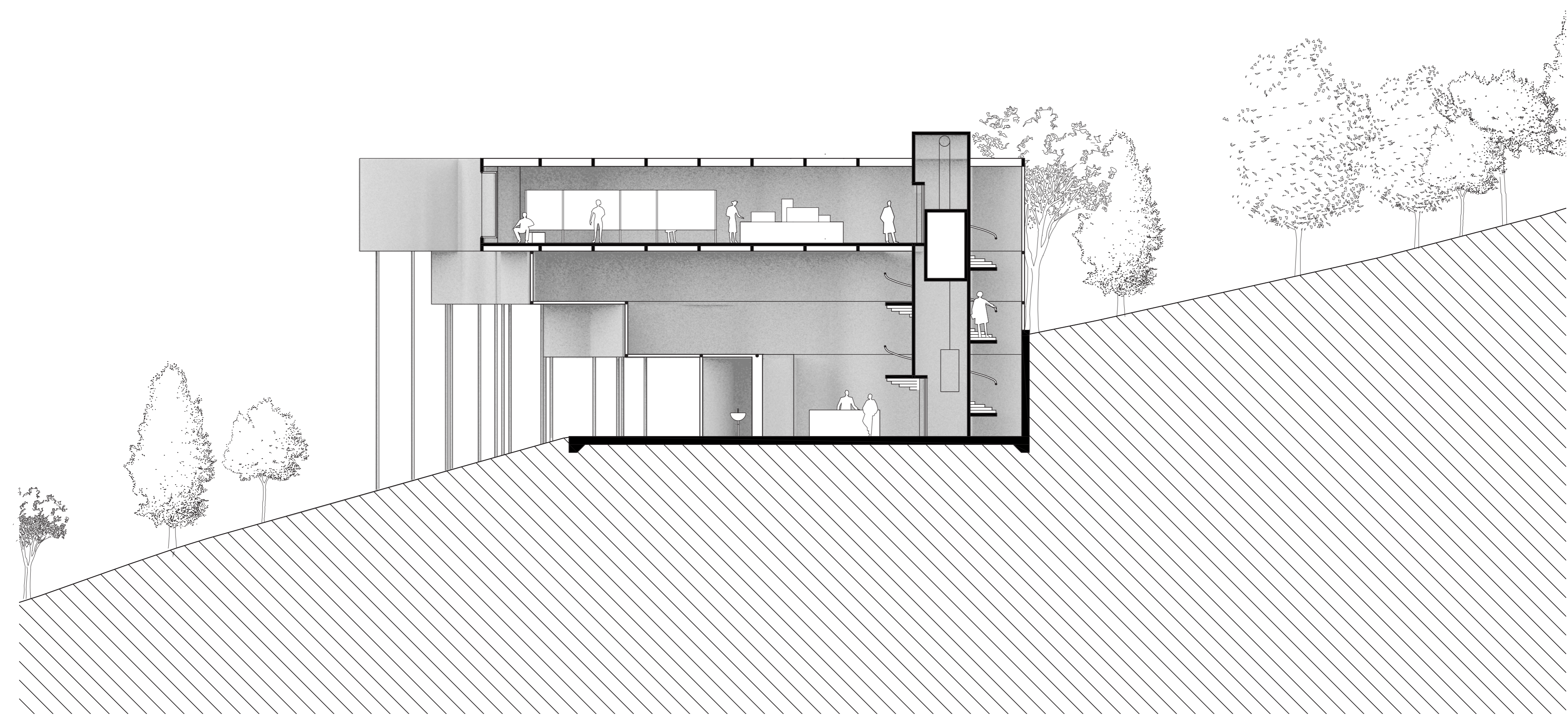
Lager is made of stainless steel with the exterior reflecting its green surroundings. On the groundfloor there is an outdoor area with places for visitors to sit and watch the view of Trafaria, both new and old. The ground floor is the smallest of the buildings two floors only containing toilets and a reception. Through the stairs or elevator visitors reach the first floor, the exhibition space. On this floor they can learn about the new area in Trafaria, go to the auditorium or sit at the window and look the new area being built in real time.



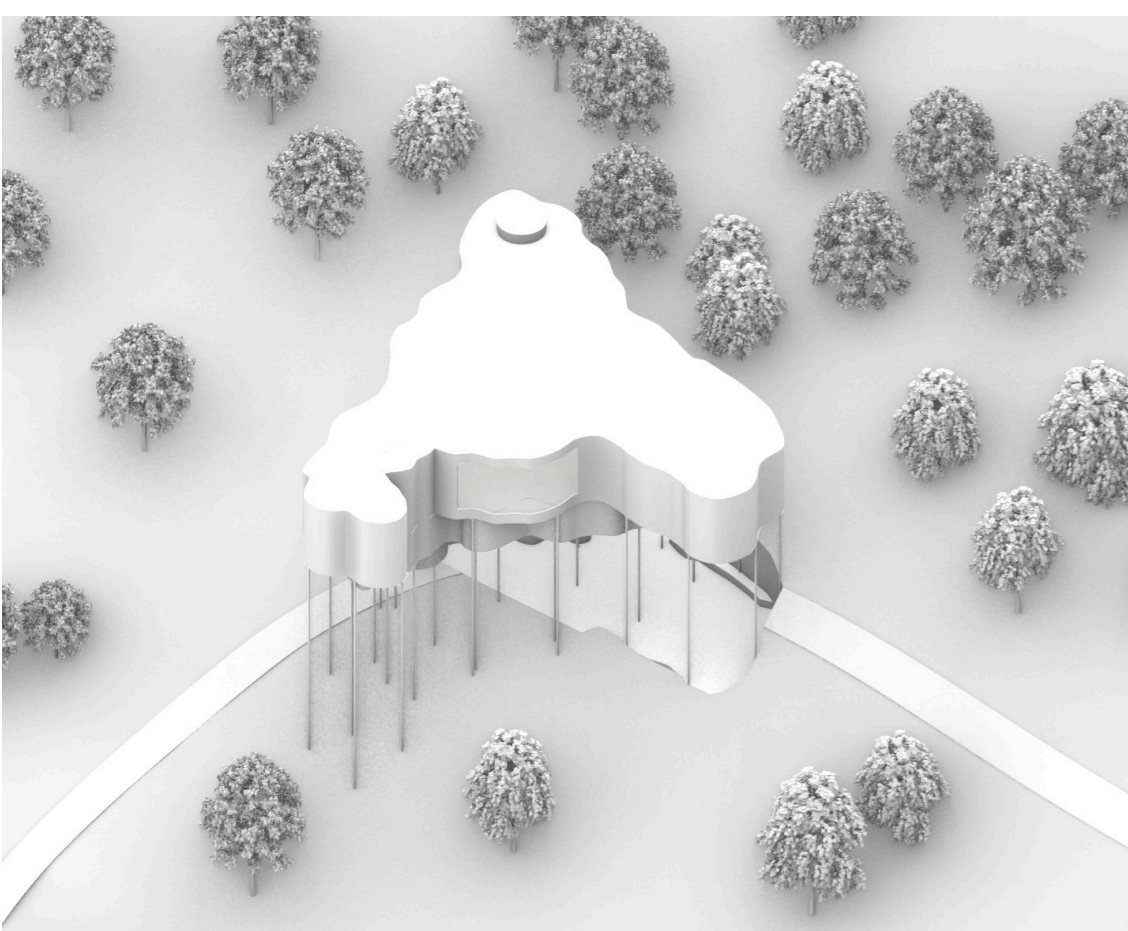
Groundfloor
1:100



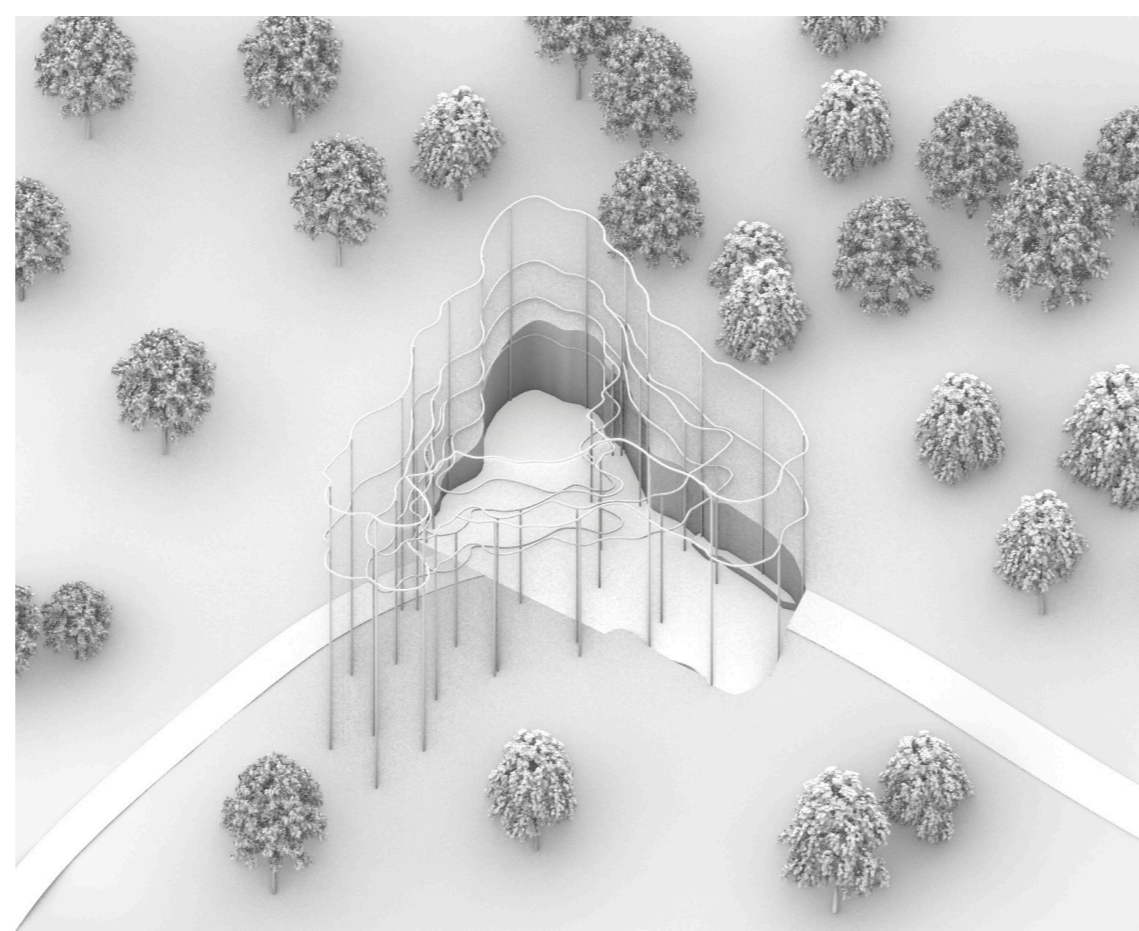
First floor
1:100



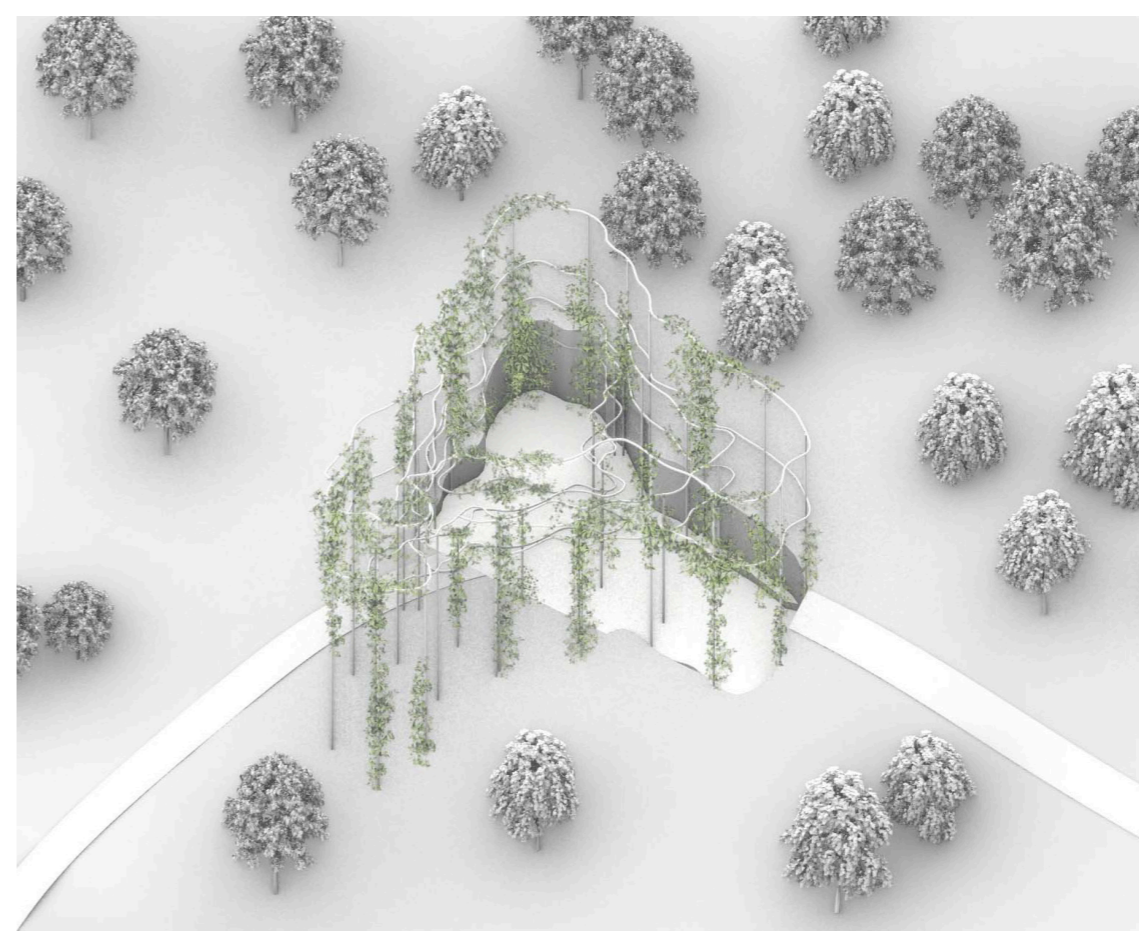
Elevation AA
1:100



Lager when used as an infobox.



Lager right after deconstruction.



Lager transformed into a vertical garden and public space.

BECOMING A PUBLIC SPACE

When the infobox is no longer needed it can be deconstructed. But by leaving the main constructional elements in place the space can be turned into a vertical garden. As the infobox is removed the outdoor area grows and generates a new public space for the residents of Trafaria. Here people can sit and watch the sunset over Trafaria or enjoy sunny days in the shade of the vertical garden.