

Axonometry from north east

# THE INTERSECTION

- PART II OF THE EXTENSION OF TRAFARIA

ISAK TENGZELIUS 20208049

The site I chose to work with is the one to the north west of our urban proposal for Trafaria. It is located in the intersection of the old town and the new area. This area had a central role in the concept for our urban proposal where the aim was to integrate the new area as a part of the city instead of simply an addition. For the urban proposal we created a central road though the whole of Trafaria working as a shared space, a road mainly for walking where you can reach all the important parts of the town. To the north of my chosen site new buildings are placed to smooth out the transition between the new and old parts of town. The houses fill in gaps in the old town and minimizes the impact of a large car road that previously worked as a barrier between the south and north parts of Trafaria. It is in the intersection of this old barrier road and the shared space road that the site is located.

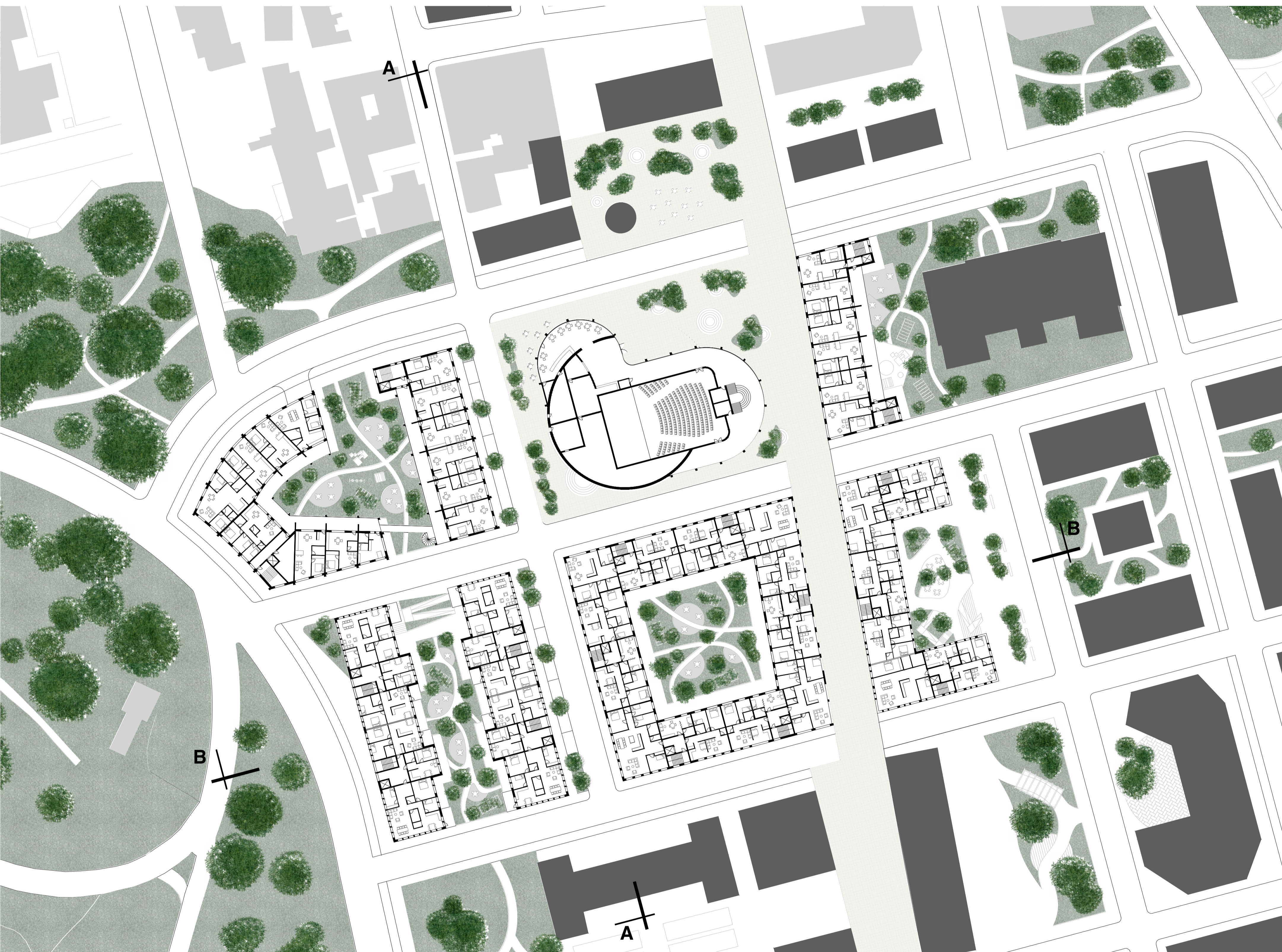
Working as an entrance to the new trafaria the square to the north of the site is intimate and welcoming. The square has an outdoor cafe and reaches over the street to where a theater is located along the shared space, inviting people in from all directions. Shaping the square and the spaces around the theater are five residential blocks. The houses are of varied typology to accommodate for different types of people wanting to move to Trafaria. There are gallery buildings with smaller apartments to accommodate for younger people as well as collective houses with apartments suitable for larger families. The different blocks have distinct characteristics and appeal to different kinds of people depending on economic situation and preferences for private versus communal space. The ont thing all of the houses have in common is something that was thoroughly missing in the old parts of town: a connection to green spaces, whether it be through green roof terraces or public/private courtyards.




 Groundfloor plan  
 1:500

Most of the shops/comercial  
 activites are located along the  
 main street, to keep with the  
 idea that this shared space will be  
 the central connecting road for  
 pedestrians.

To avoid discomfort from  
 passers-by appartments are  
 raised above street level and  
 groundfloors mainly accomodate  
 other facilities such as shops or  
 storage.



⌚ Typical floor plan  
1:500

A mix of apartments suited for different needs both economical and spatial.



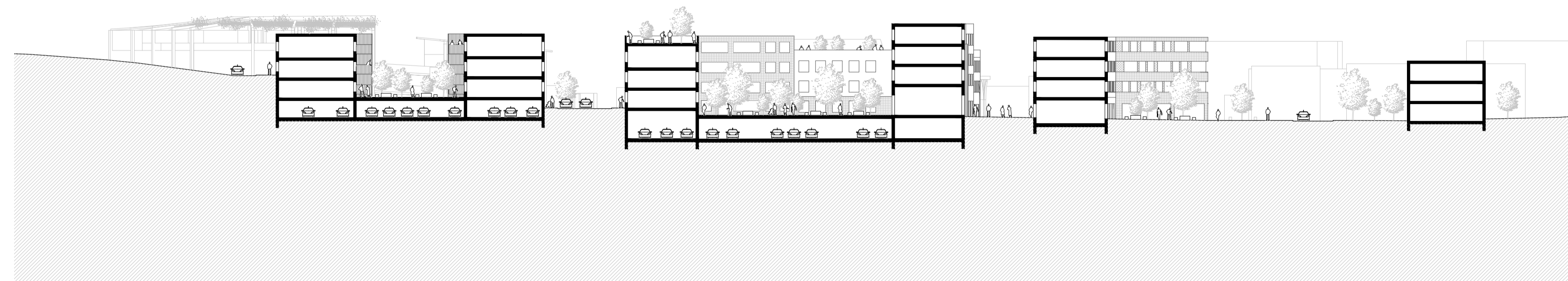
The courtyard belonging to the gallery building



Section AA  
1:500

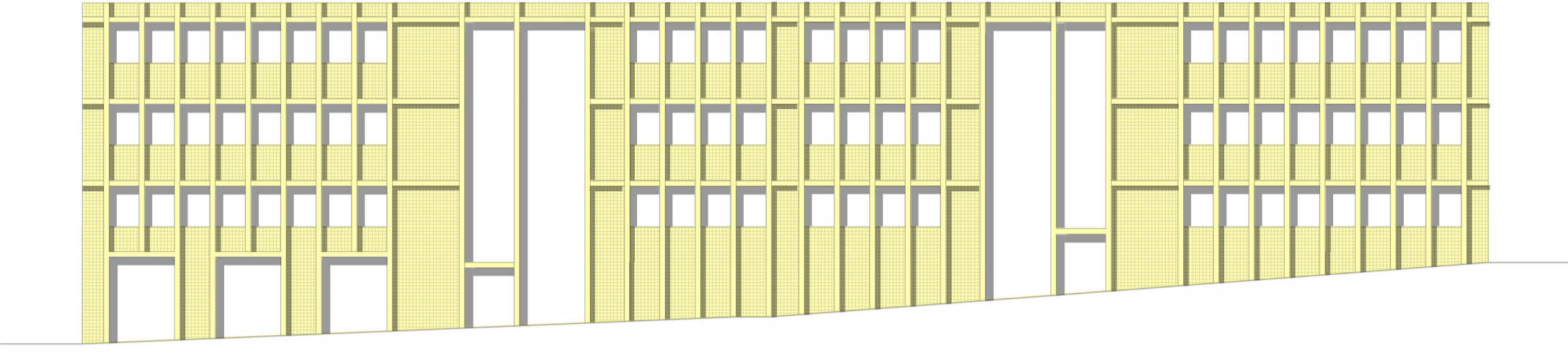


The square located in the intersection between new and old Trafaria with a view of the theater

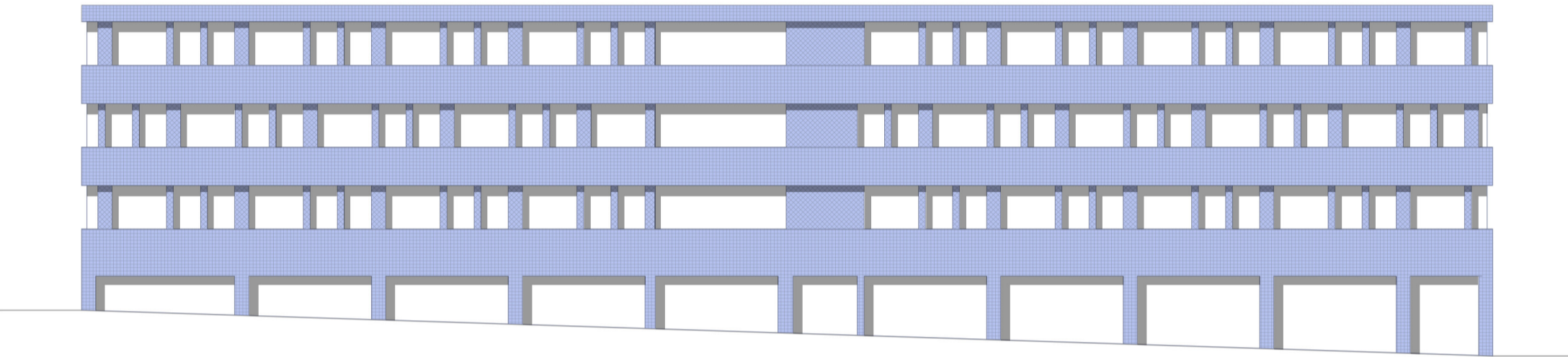


Section BB  
1:500

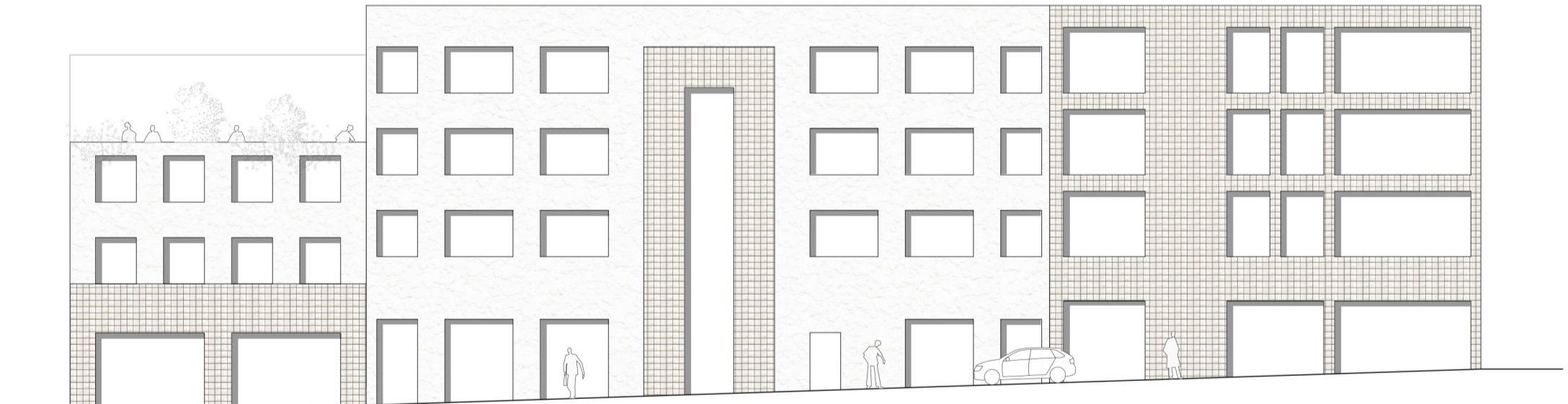
# CHARACTER



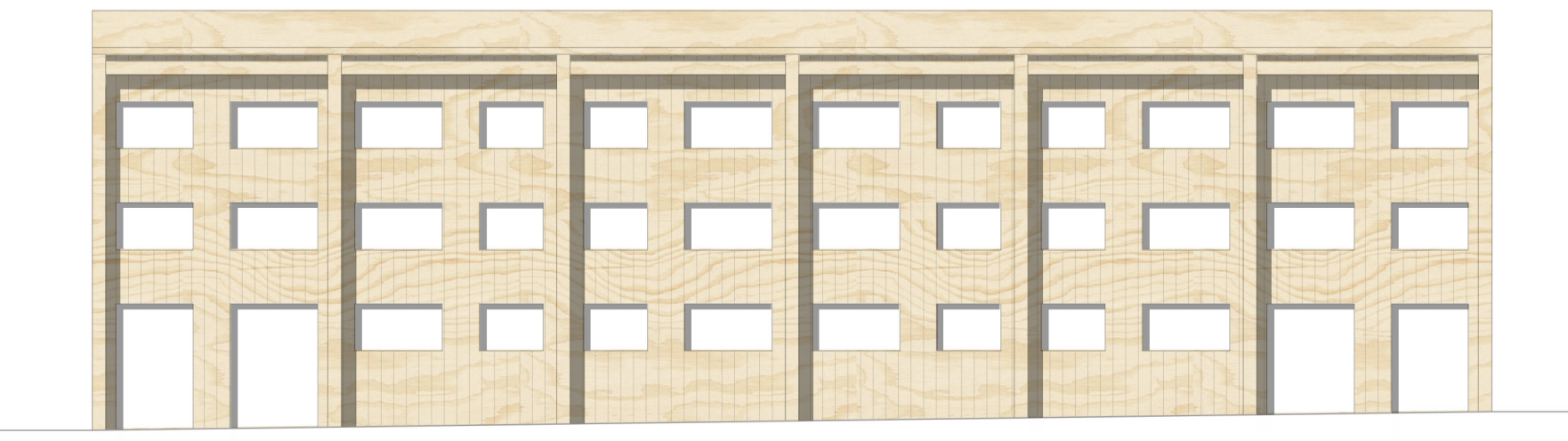
Yellow tile facade  
1:200



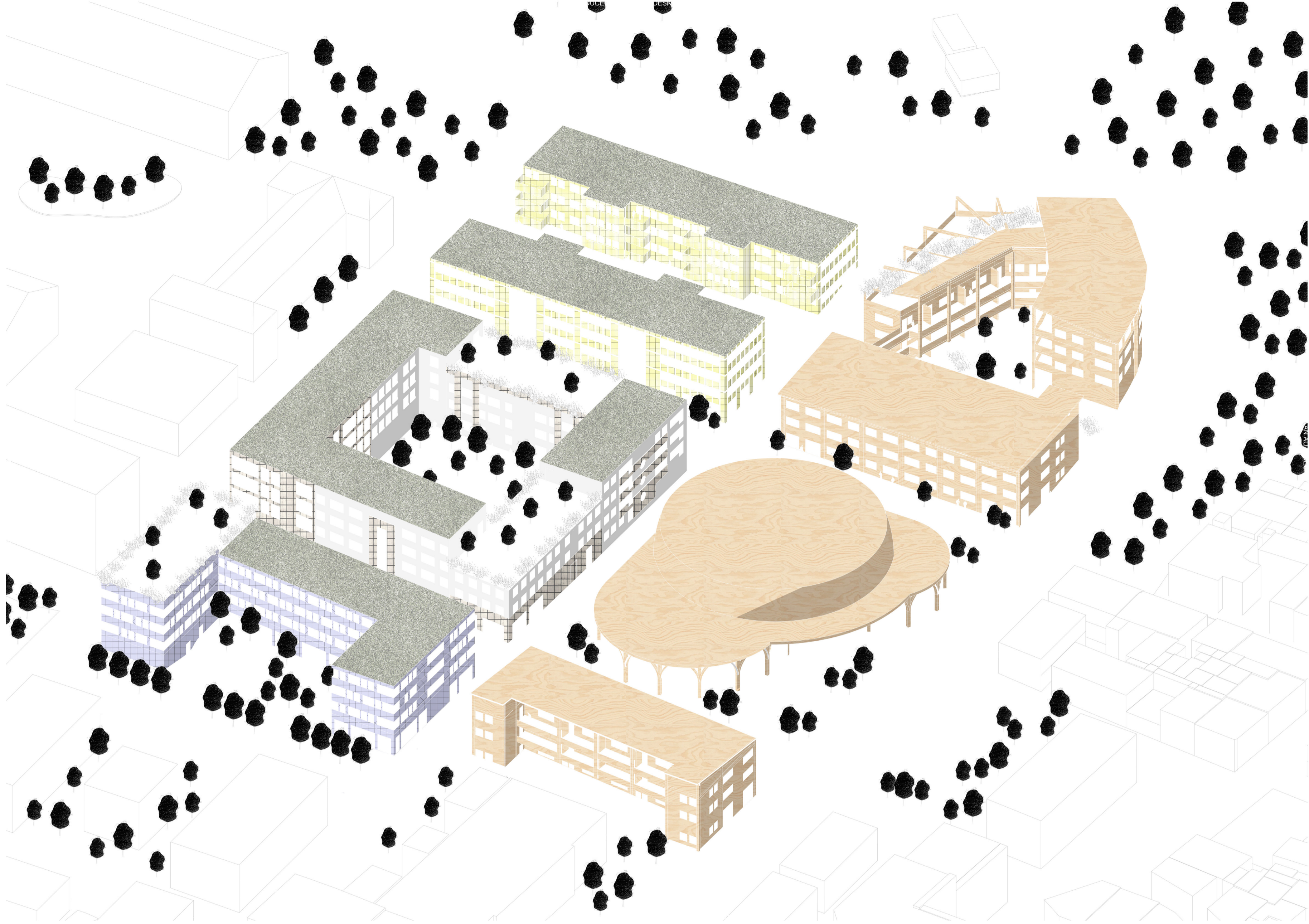
Blue tile facade  
1:200



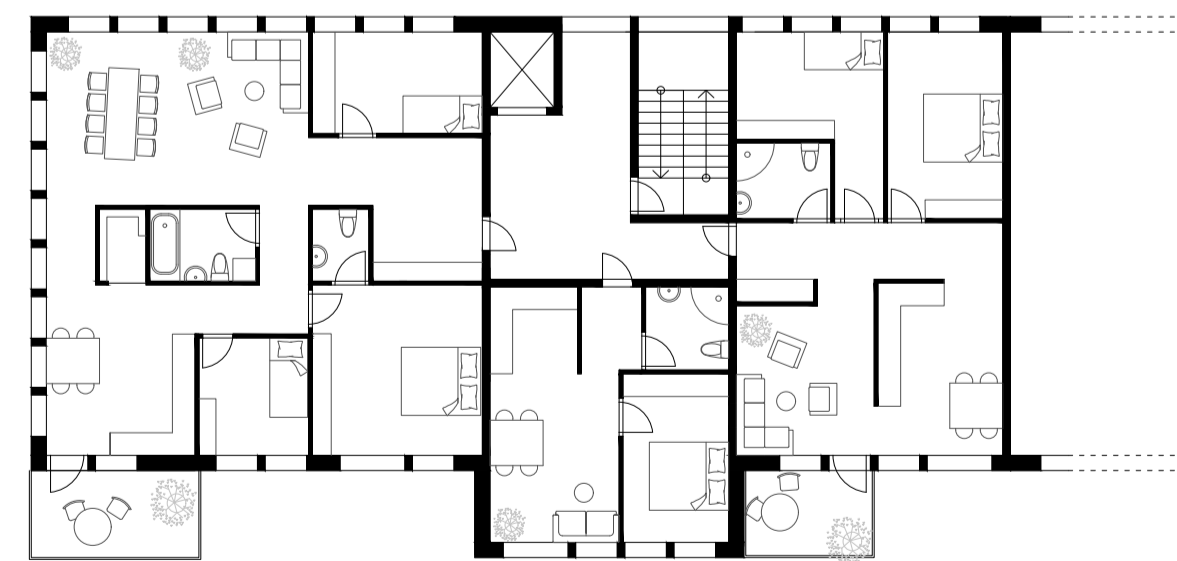
Raku tile facade  
1:200



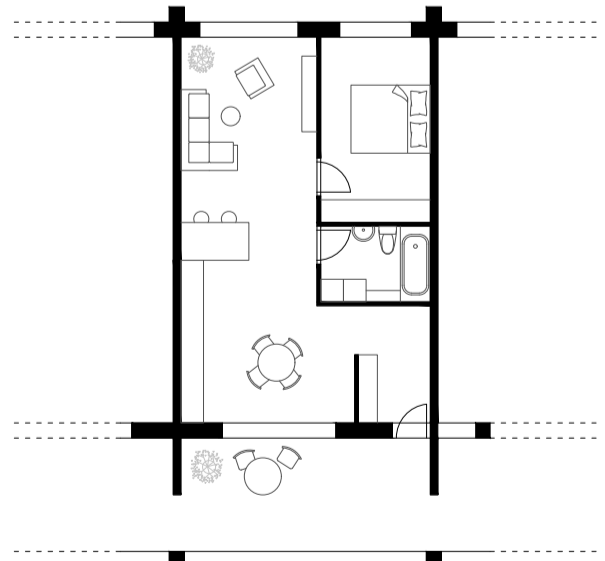
Wood facade  
1:200



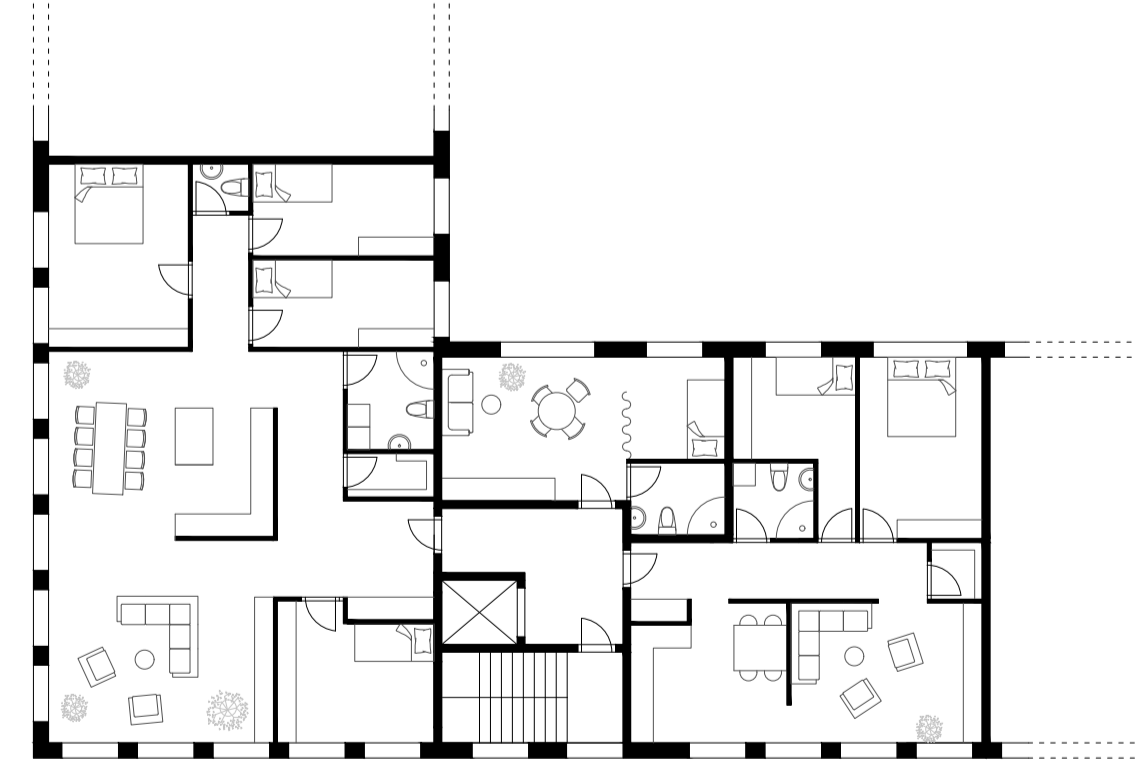
Axonometry with facade materials



Example plan of lamella house  
1:200

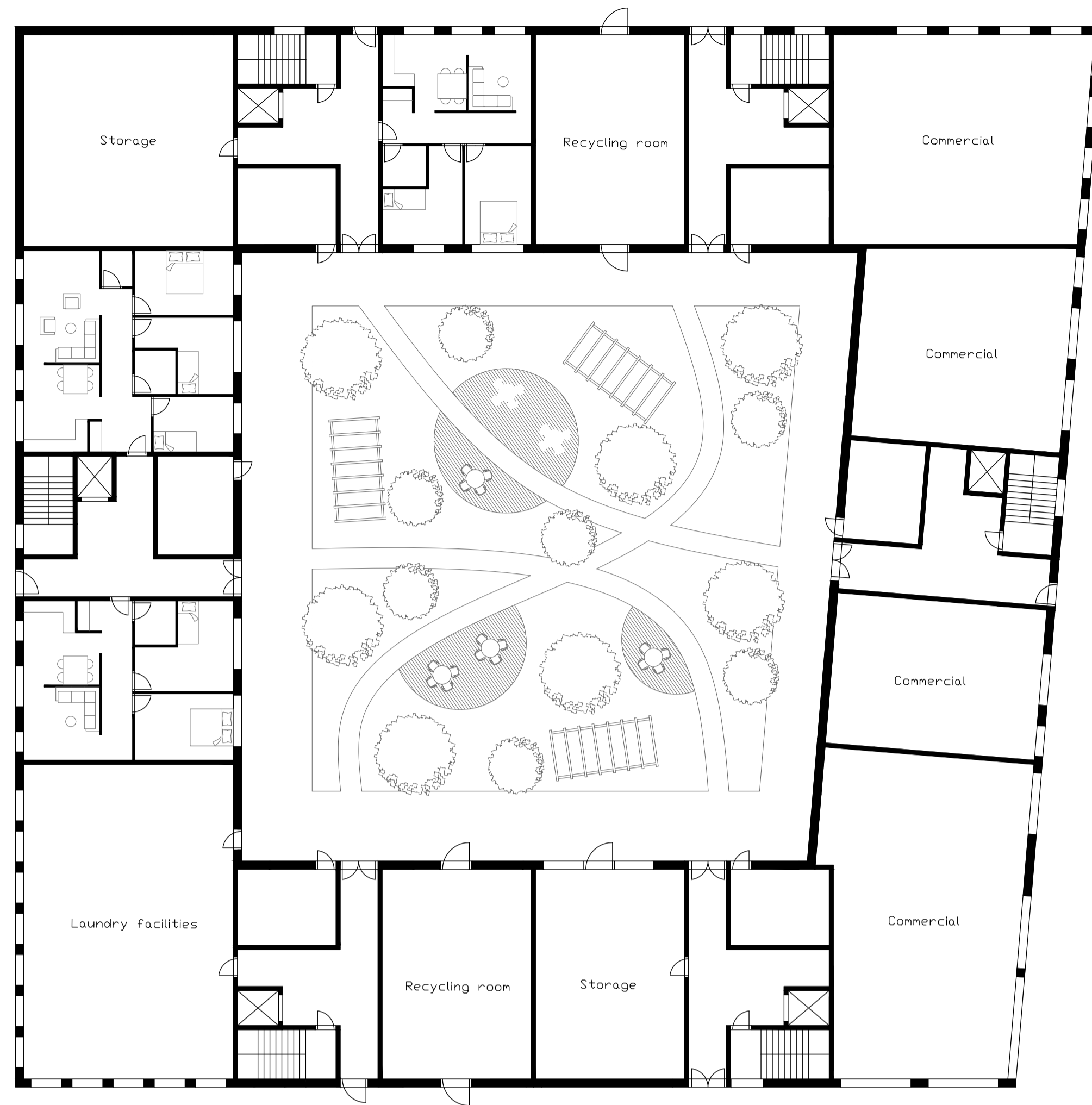


Example plan of gallery building  
1:200

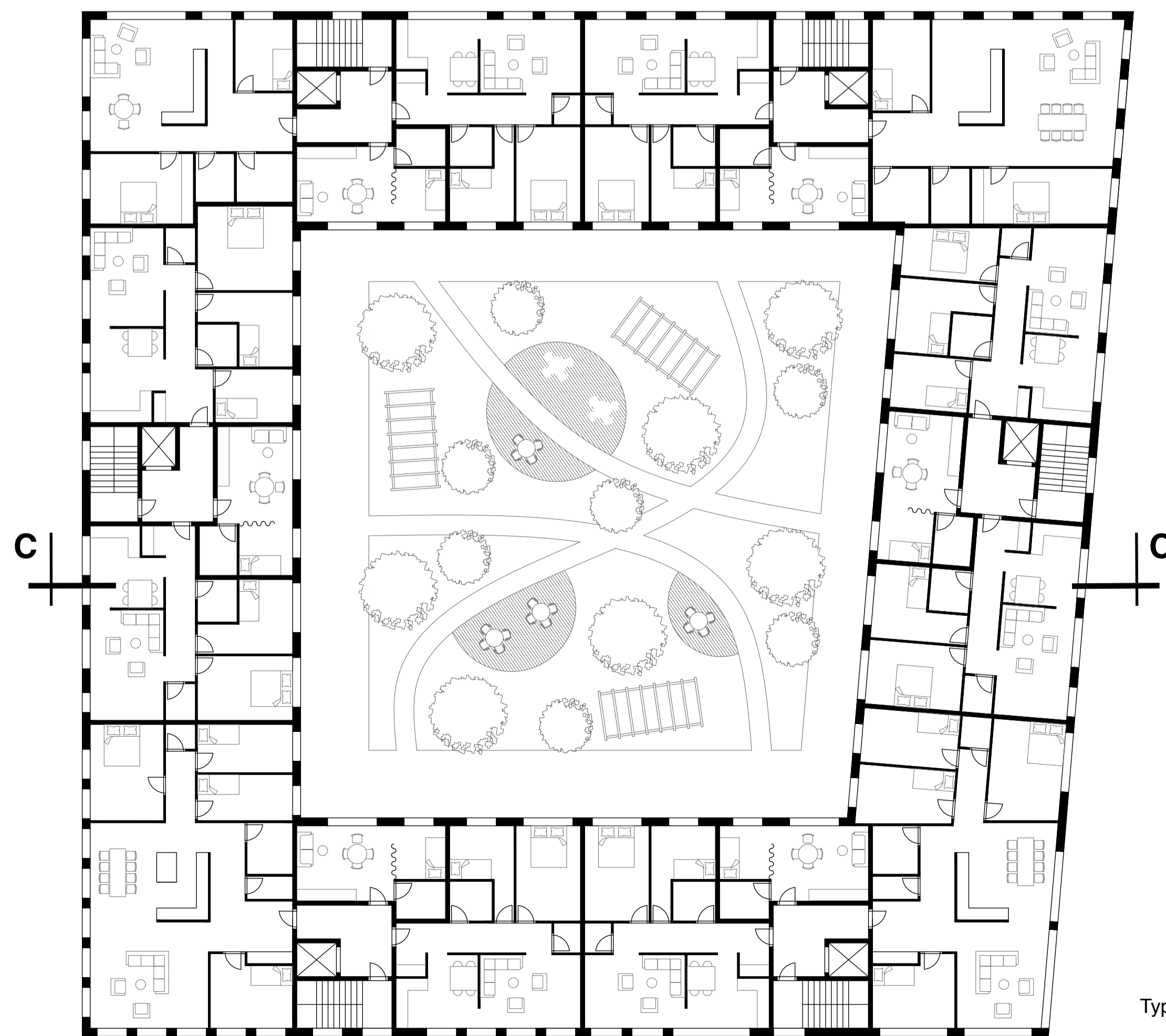
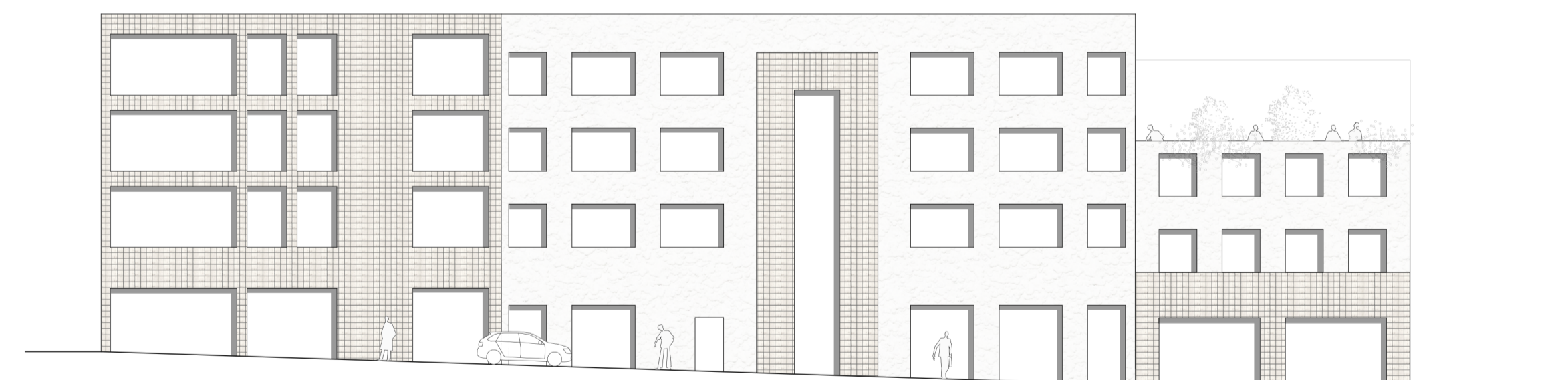


Example plan of courtyard house  
1:200

# RAKU HOUSE



Ground floor plan  
1:200



Typical floor plan  
1:200

