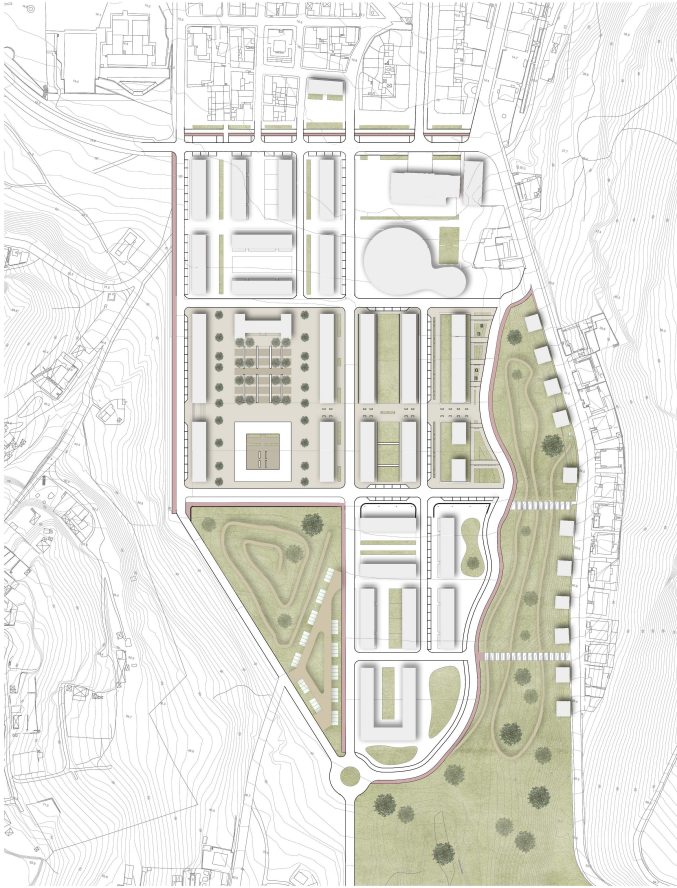


Re (design) of Trafaria, south expansion

The urban expansion proposal for Trafaria, intends to revitalize and promote social, commercial and cultural activities, and to expand the housing needs that this historic village manifests. The present urban (re) design focuses on the unification of buildings and public space from level 19 to level 23, in a line of visual connection of the whole with the parts, that is, from the square to the West to the housing area to the East. Of the three structural blocks, the Square stands out to the West, which is the fluid meeting point of the group. The paved area is surrounded by four blocks of commerce and services, and two proposed buildings such as the Market and the Trafaria Museum. The latter is the rehabilitation of the existing building, framing the historic past with the proposed modernity. In this sense, the choice of pavement materiality focused with the laying of sidewalks in the central area and the interior patio of the market. The openings on the ground floor of the buildings to the East of the square, and of the collective housing buildings, allow light corridors and pedestrian use, that while unifying the social, recreational, housing, business and commercial activities, maintain the differentiation and distinction of each set, preserving their individual uniqueness. The central block is defined by four blocks of residential buildings. To overcome the slope, the buildings to the North rise to level 22 and are accessible from the sides. This aspect emphasizes the inclination of the central space and also the more reserved character of this block. This green park offers conditions for the enjoyment of everyday social and recreational activities, as well as the qualification of outdoor spaces, so that it promotes living the public space. Finally, the housing area for single-family housing highlights this hierarchy from public to private in the three blocks. Although these are privileged with a private patio, the surrounding public space also invites you to enjoy it, with the openings in the pavement to make room for areas of vegetation, a picnic area and a children's playground. Specifying the housing buildings, the ground floor of the collective housing complex is intended for services, commerce and access to the housing on the upper floors. Each section consists of left/right composed of a T4 duplex apartment and a T1 apartment. These are connected with the outside through built-in balconies that provide the depth of the elevation. In turn, the single-family housing arises from the emphasis on the central space, the living room, with double height and zenith lighting. The upper floor houses two bedrooms and one suite, where the corridor is designed to connect the private area of the dwelling, with the opening of this to that central space. The laundry area deserves to be highlighted on the top floor, as it is intended for the treatment of clothes and accessories that will later be placed in the rooms, the practical sense of the location was what was intended. The materiality of the collective housing blocks gives a natural texture to that area, which matches the naturalness of the central green area. The facade panels are complemented by shutters, which allows the facade to vary according to the opening or closing of the panels. The same happens with single-family housing, however, this is distinguished by the application of wood as a natural material. In short, the order, connection and movement of urban design was the intended proposal between level 19 and level 23, which emphasizes the fusion of spaces while maintaining the specificity of each one. Bring the forgotten vitality of Trafaria, so that it rejuvenates in a modern layout where the user feels invited to inhabit the space.



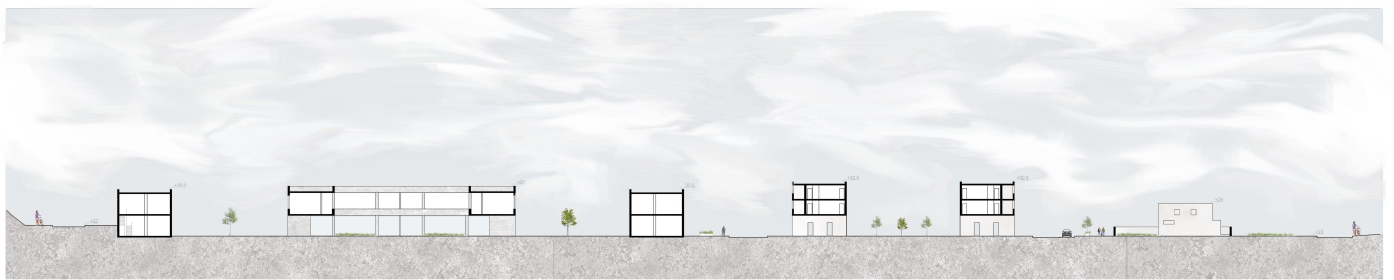
urban plan | scale 1/2000



ground floor plan | scale 1/500



section A A' | scale 1/500



section B B' | scale 1/500



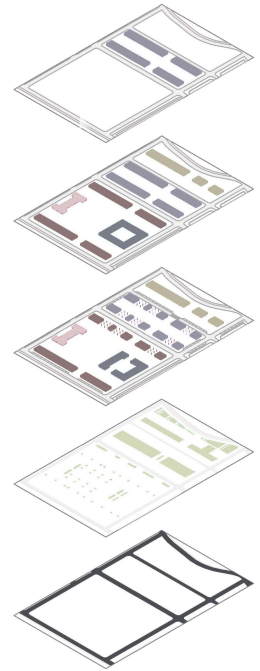
first floor plan | scale 1/500



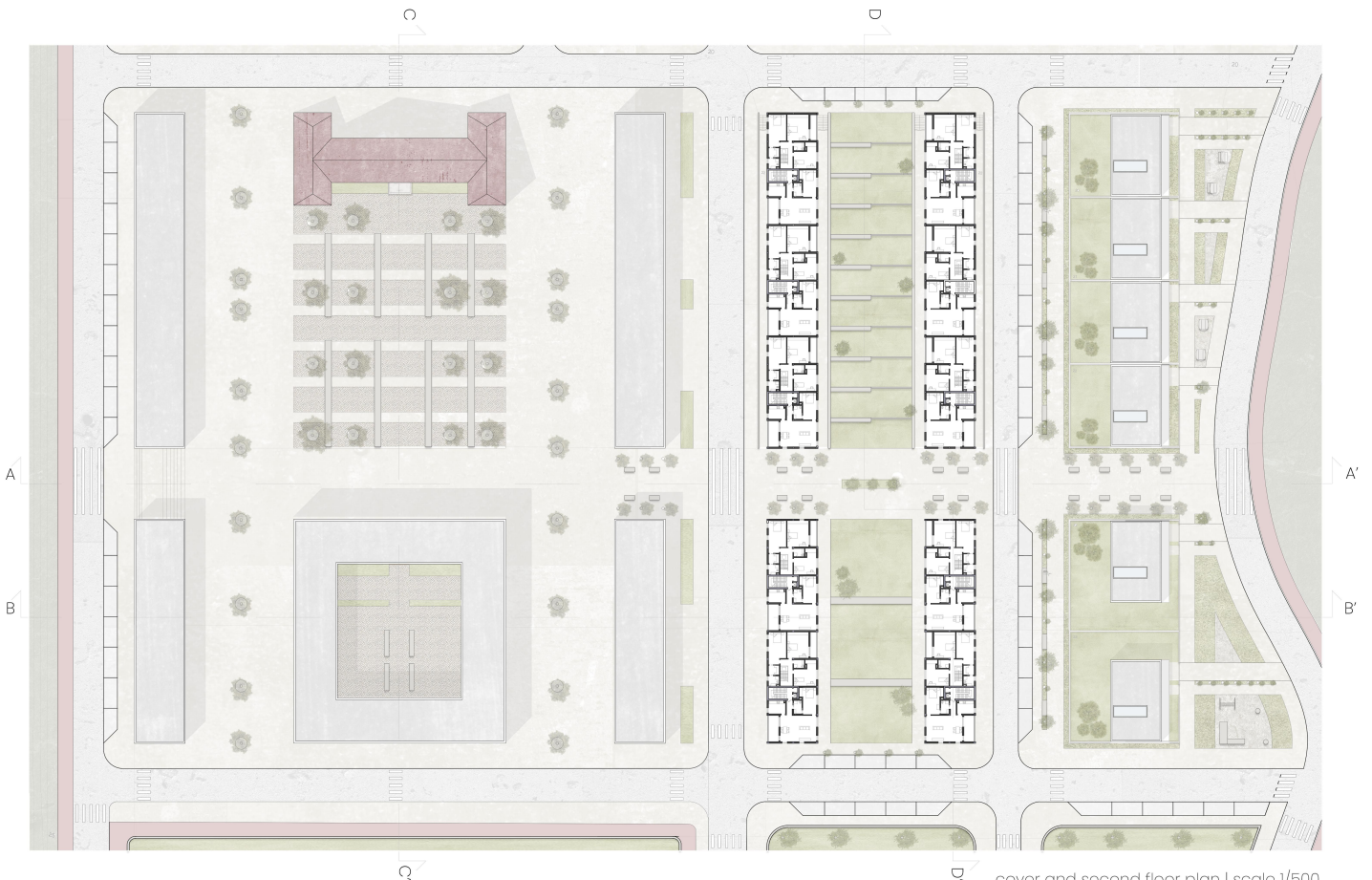
section C C' | scale 1/500



section D D' | scale 1/500



- service and trade + collective housing    ■ single family housing
- roads    ■ green spaces    ■ market    ■ service and trade    ■ museum



cover and second floor plan | scale 1/500



elevation A A' | scale 1/200



section B B' | scale 1/200



ground floor plan | scale 1/200



section C C' | scale 1/200



elevation D D' | scale 1/200



second floor plan | scale 1/200



3D model of the urban proposal



central square



central square



main street



main street



green park



single family housing



single family housing



green park