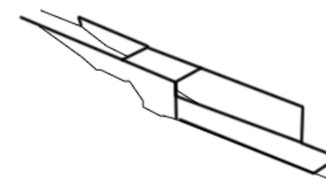
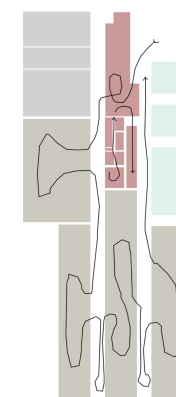
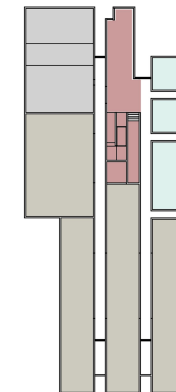




Planta de Localização | Escala 1/ 1000



Planta de Intervenção | Escala 1/ 500

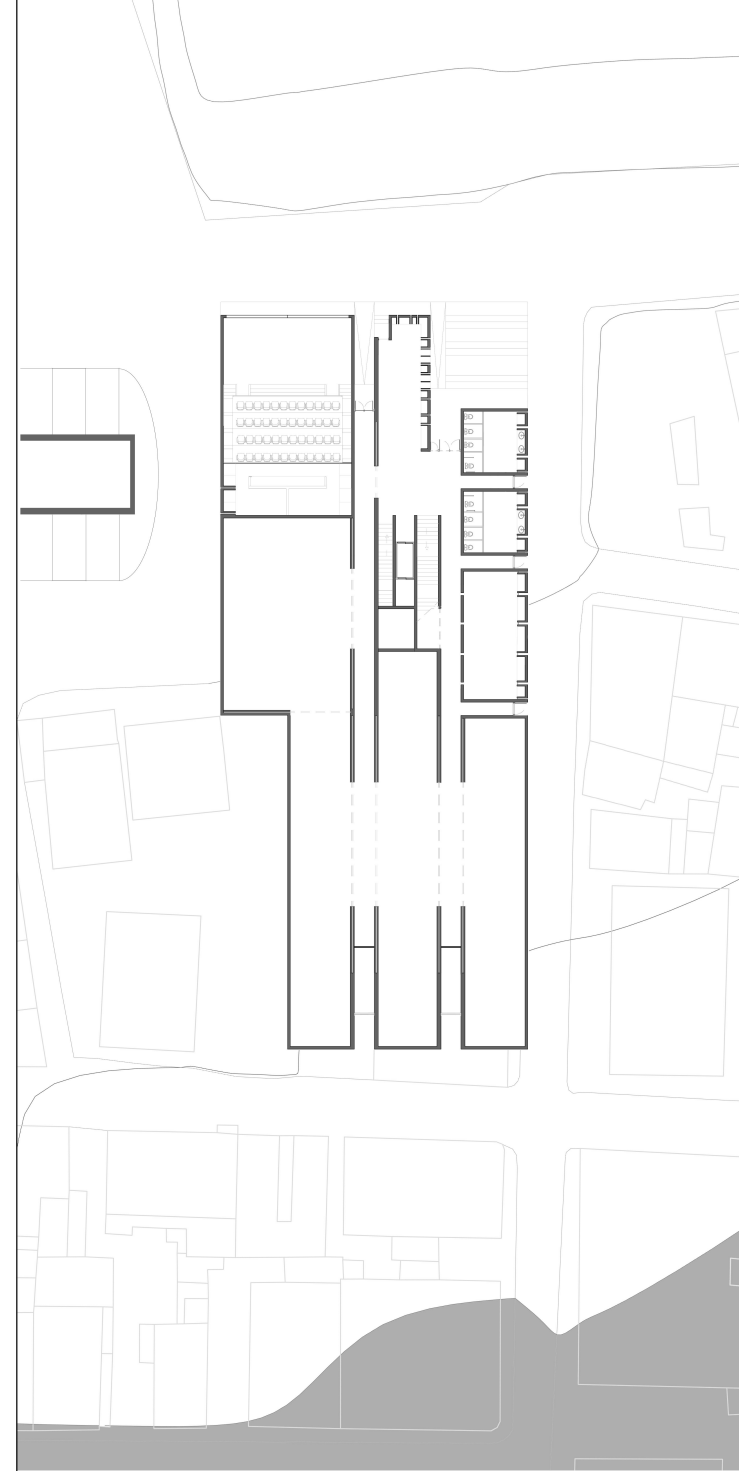
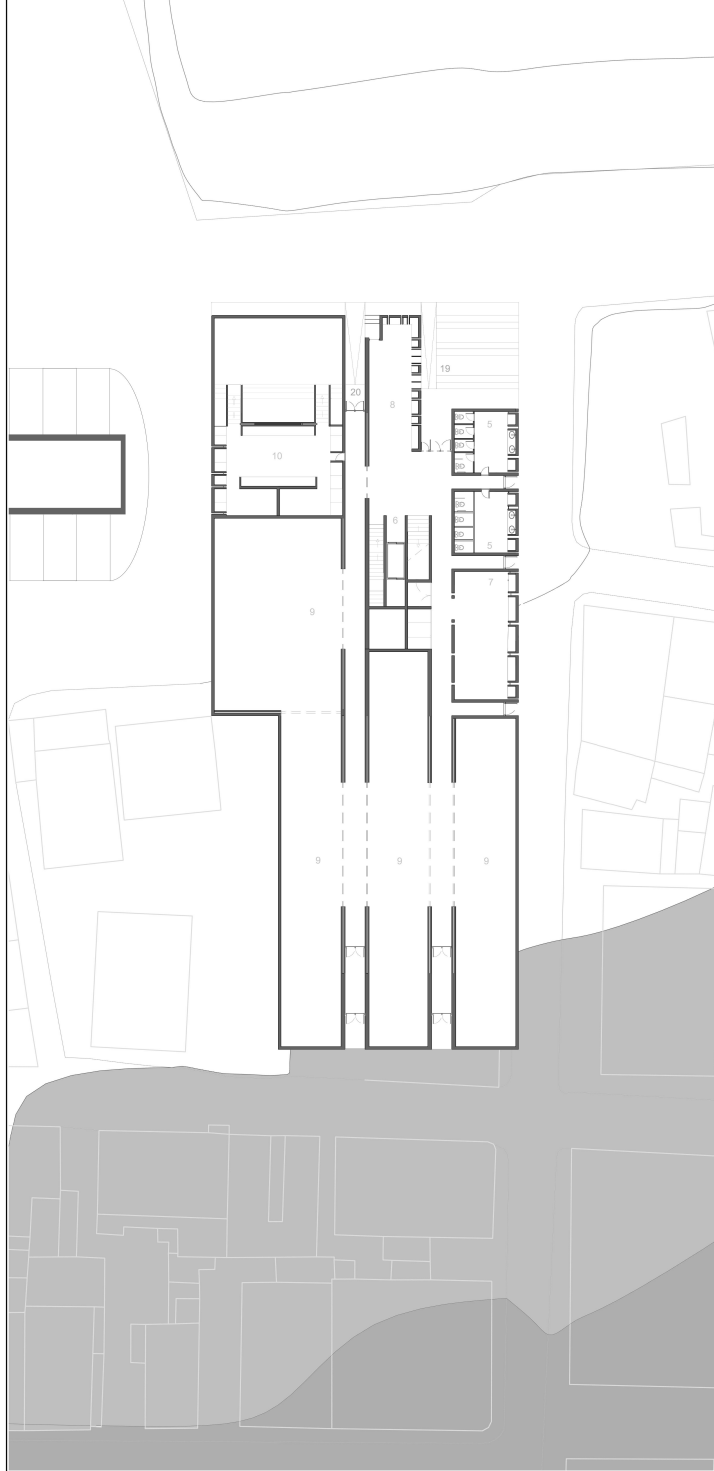
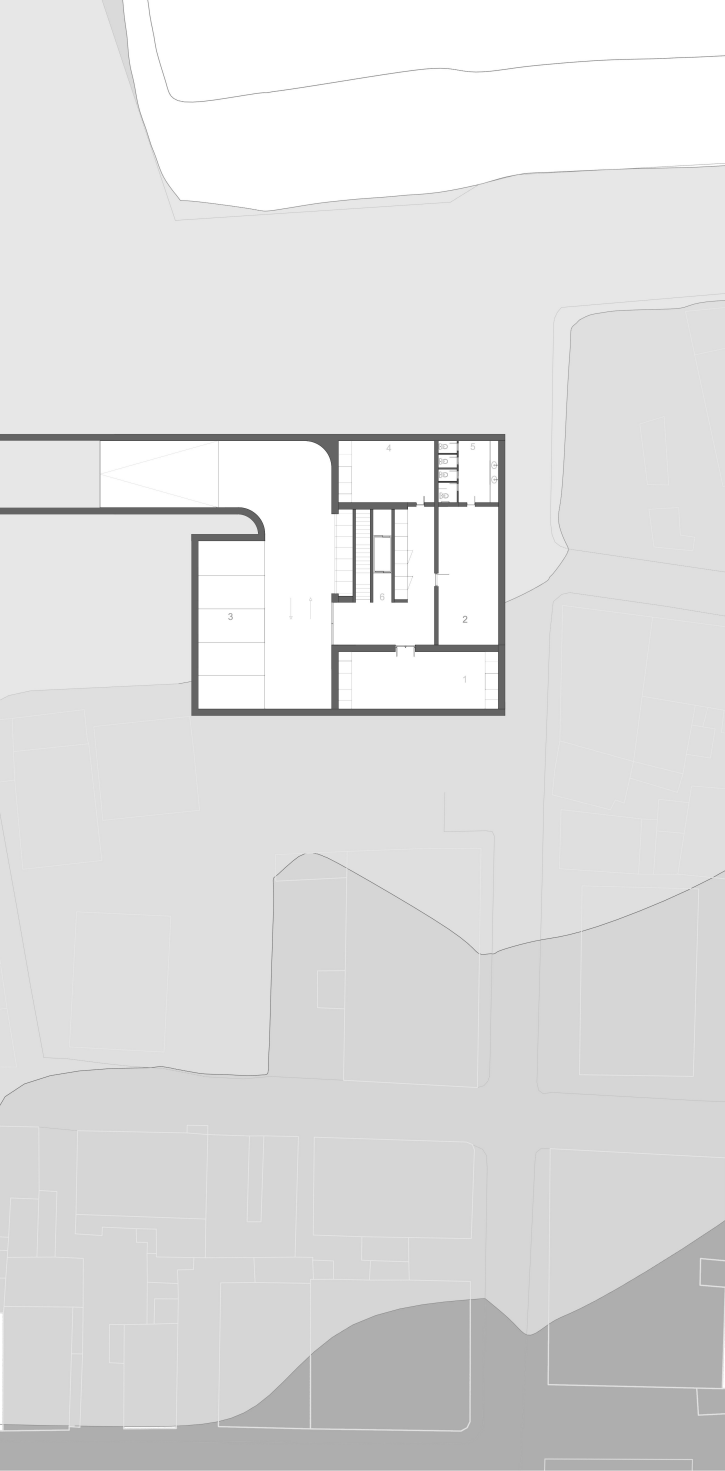


- Legenda
- 1- Estacionamento
  - 2- Café
  - 3- Estrutura Polidesportiva
  - 4- Cacifos e estrutura de apoio aos pescadores
  - 5- Museu

Módulos | Organização Museu



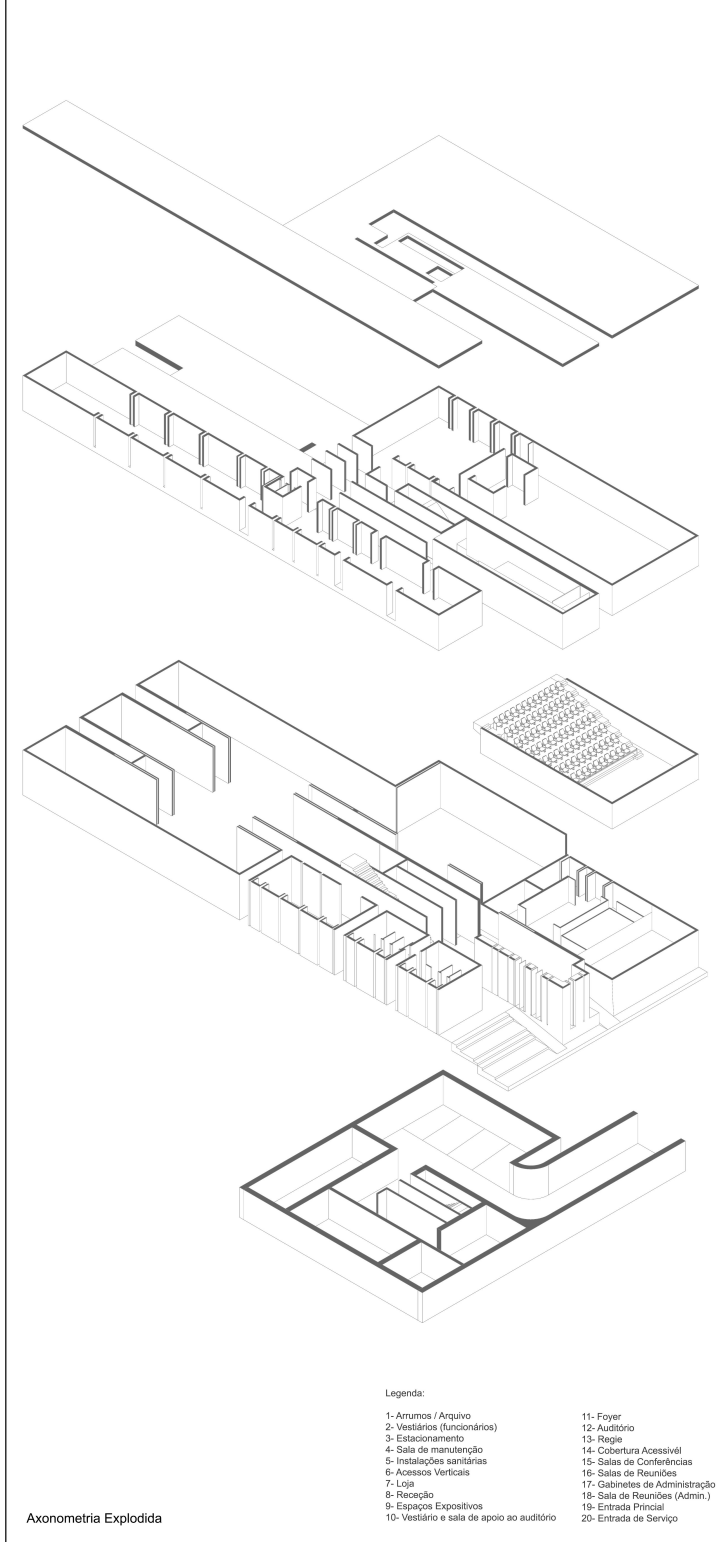
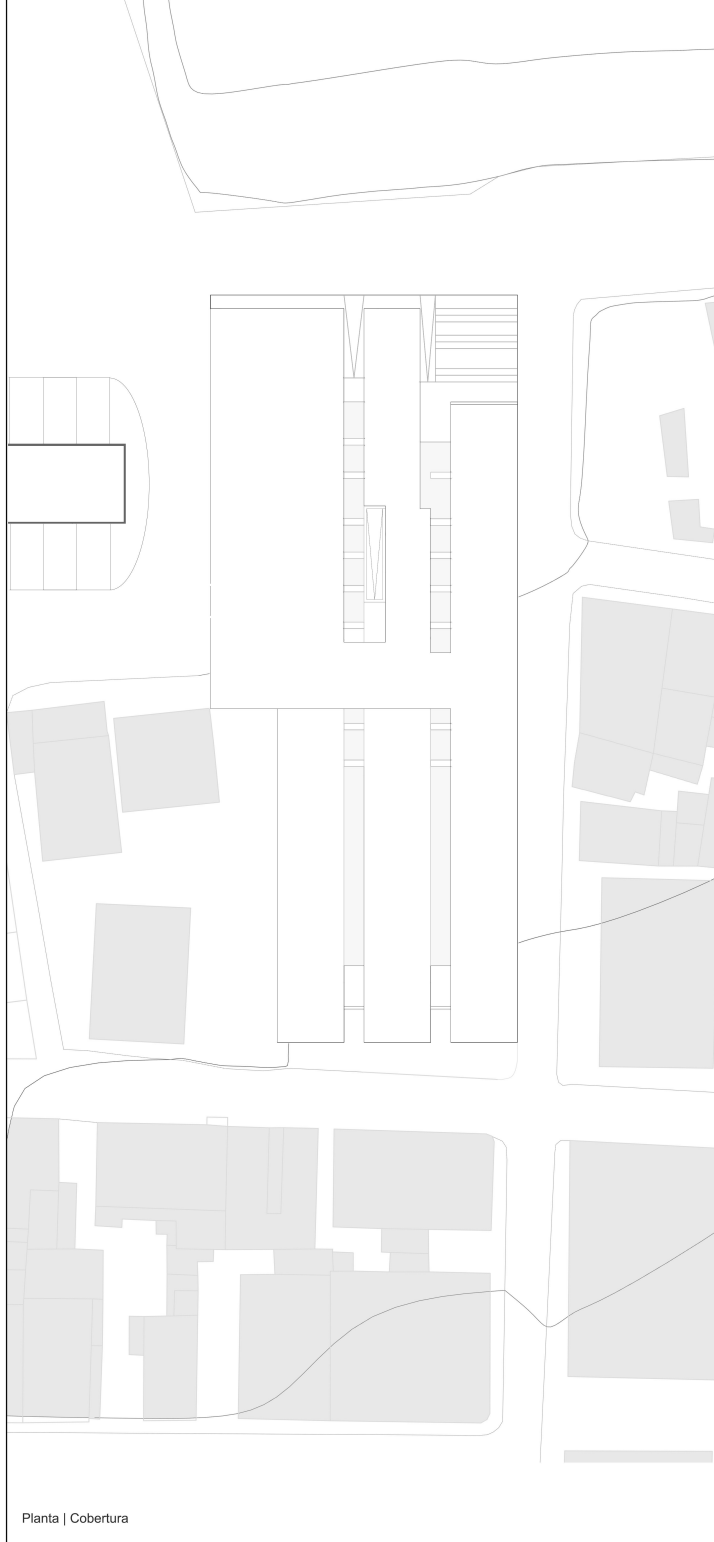
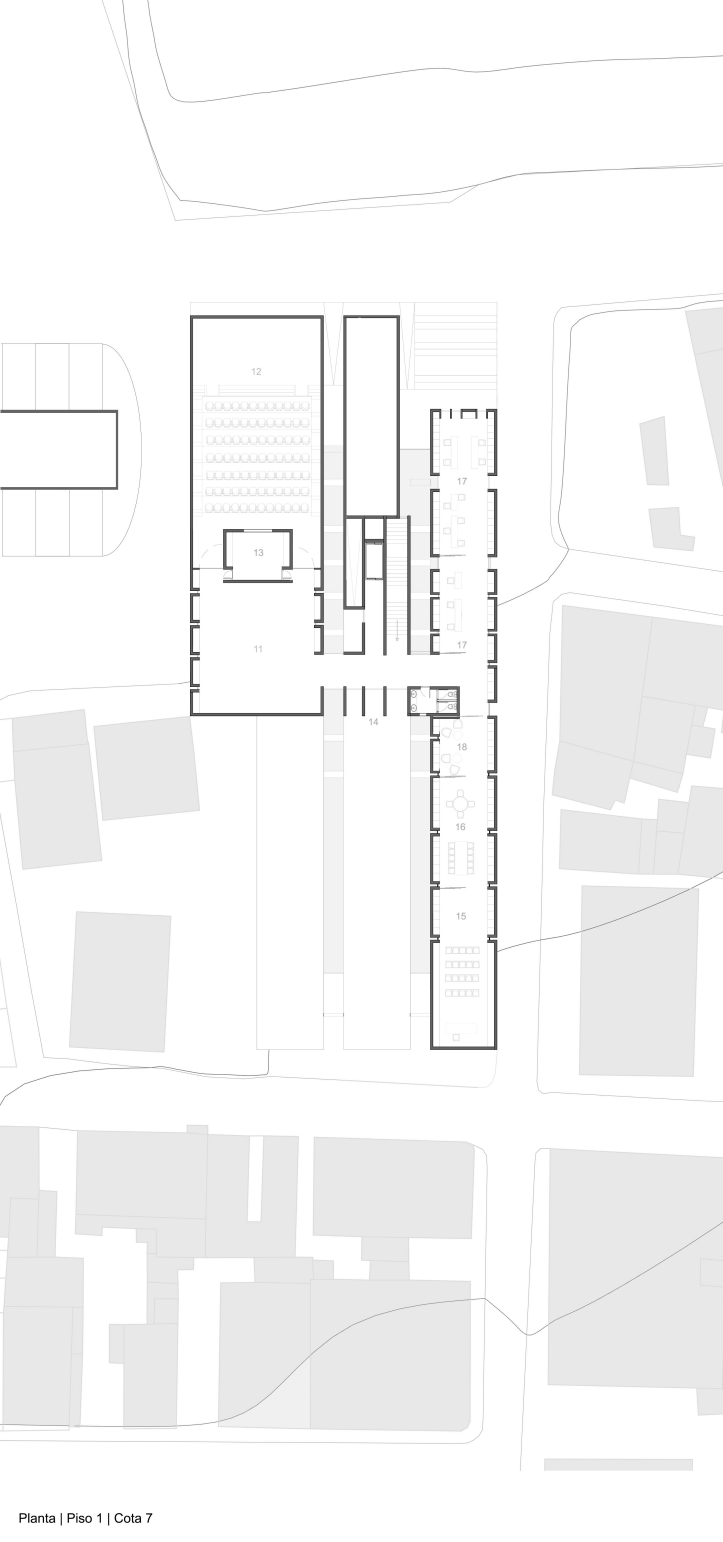
Corte | Escala 1/ 500



Planta | Piso subterraneo (Cave)

Planta | Piso Térreo | Cota 3

Planta | Piso Térreo | Cota 5



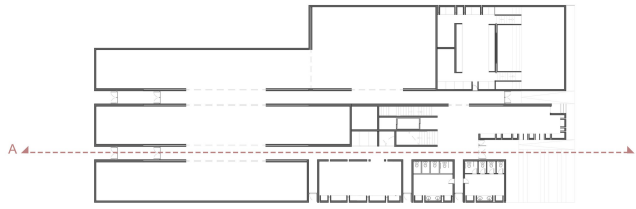
- Legenda:
- |  |                                |
|--|--------------------------------|
| 1- Armários / Arquivo                      | 11- Foyer                      |
| 2- Vestiários (funcionários)               | 12- Auditório                  |
| 3- Estacionamento                          | 13- Regio                      |
| 4- Sala de manutenção                      | 14- Cobertura Acessível        |
| 5- Instalações sanitárias                  | 15- Salas de Conferências      |
| 6- Acessos Verticais                       | 16- Salas de Reuniões          |
| 7- Loja                                    | 17- Gabinetes de Administração |
| 8- Recepção                                | 18- Sala de Reuniões (Admin.)  |
| 9- Espaços Expositivos                     | 19- Entrada Principal          |
| 10- Vestiário e sala de apoio ao auditório | 20- Entrada de Serviço         |

Planta | Piso 1 | Cota 7

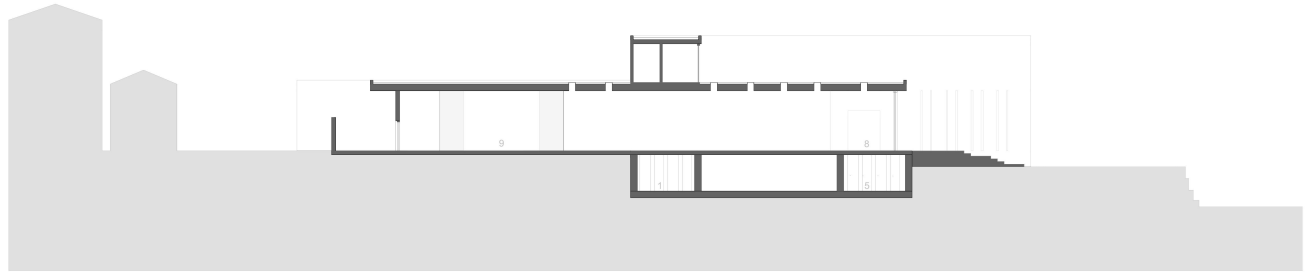
Planta | Cobertura

Axonometria Explodida

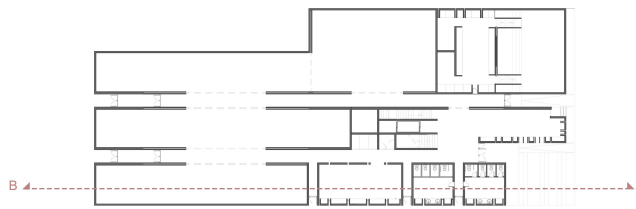




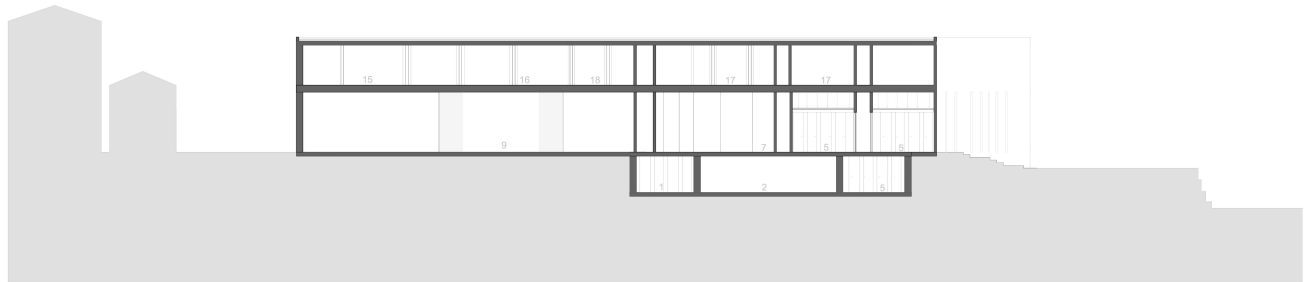
Planta | Piso Térreo



Corte AA'



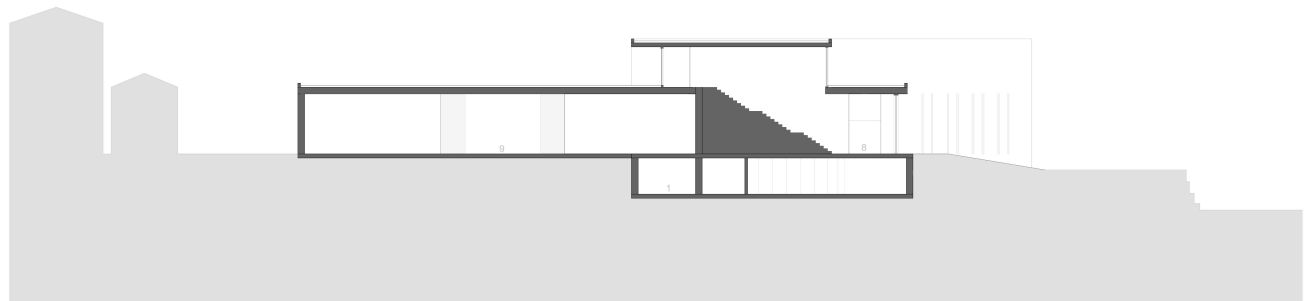
Planta | Piso Térreo



Corte BB'

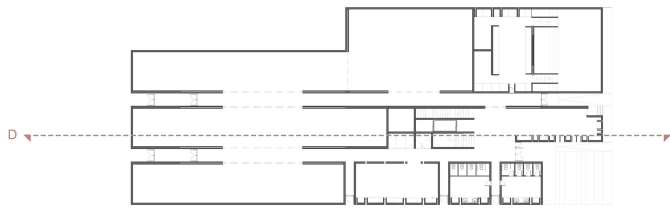


Planta | Piso Térreo

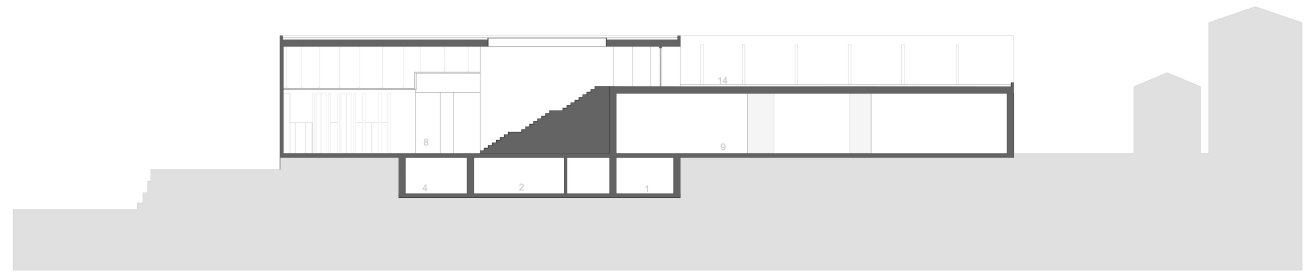


Corte CC'

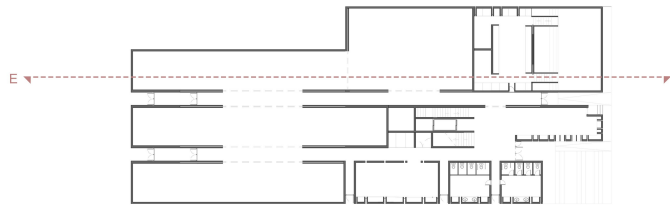




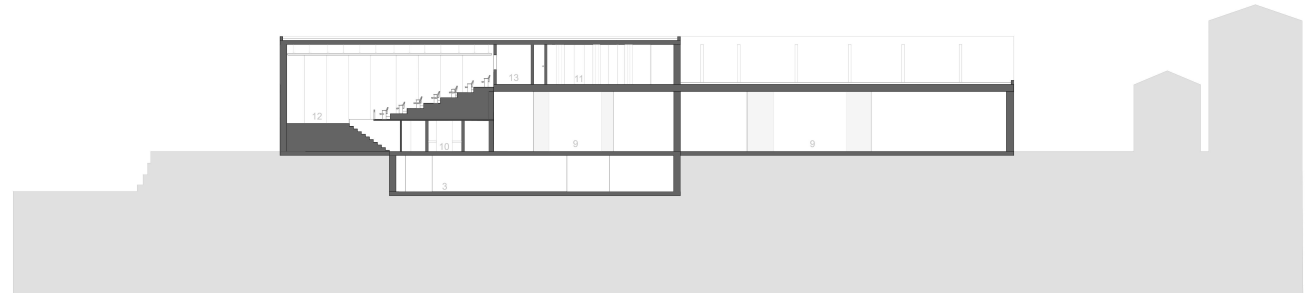
Planta | Piso Térreo



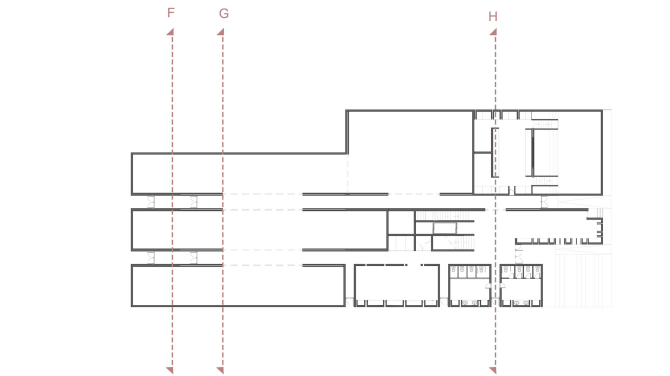
Corte DD'



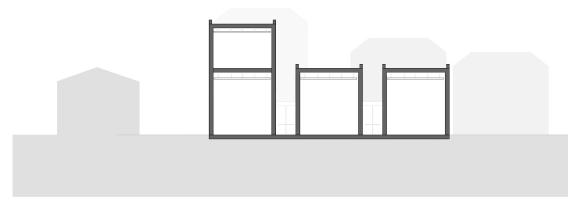
Planta | Piso Térreo



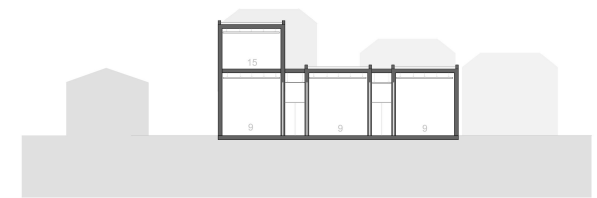
Corte EE'



Planta | Piso Térreo



Corte FF'

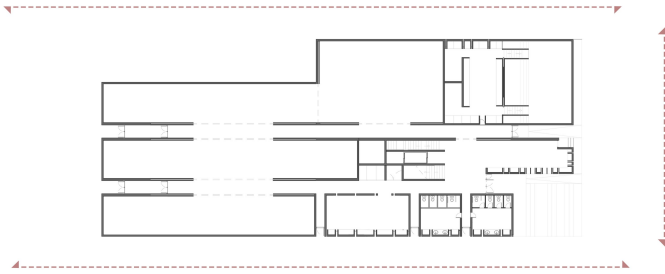


Corte GG'



Corte HH'

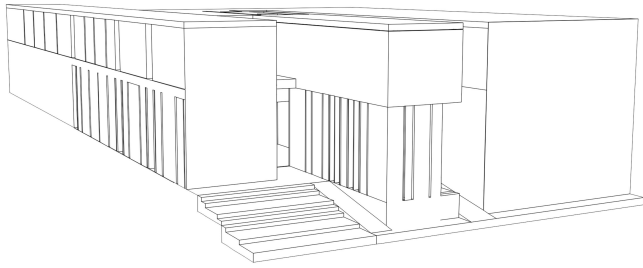
- Legenda:
- |  |                                |
|--|--------------------------------|
| 1- Arrumos / Arquivo                       | 11- Foyer                      |
| 2- Vestiários (funcionários)               | 12- Auditório                  |
| 3- Estacionamento                          | 13- Ragão                      |
| 4- Sala de manutenção                      | 14- Cobertura Acessível        |
| 5- Instalações sanitárias                  | 15- Salas de Conferências      |
| 6- Acessos Verticais                       | 16- Salas de Reuniões          |
| 7- Loja                                    | 17- Gabinetes de Administração |
| 8- Recepção                                | 18- Sala de Reuniões (Admin.)  |
| 9- Espaços Expositivos                     | 19- Entrada Principal          |
| 10- Vestiário e sala de apoio ao auditório | 20- Entrada de Serviço         |



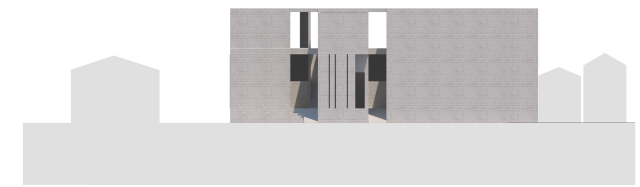
Planta | Piso Térreo



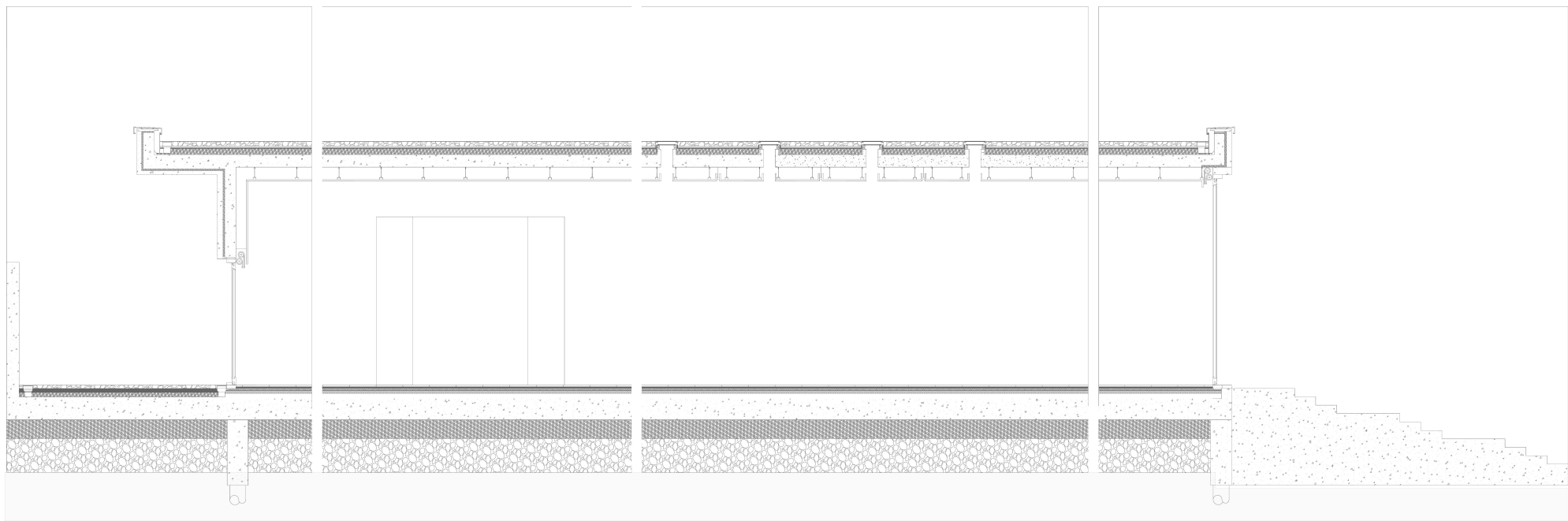
Alçado Nascente



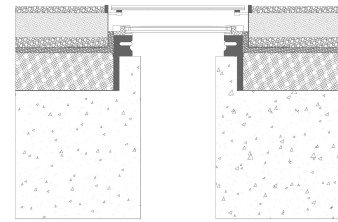
Alçado Poente



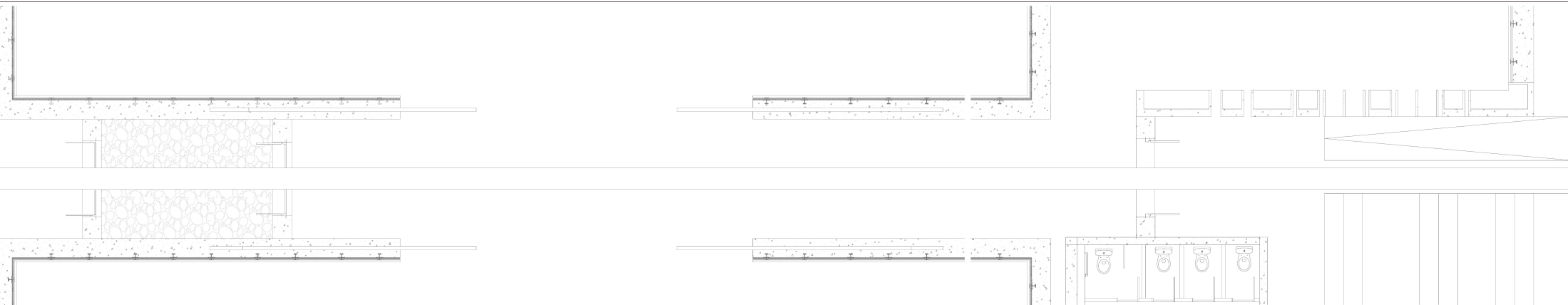
Alçado Norte



Corte Construtivo



Pormenor Construtivo | Iluminação Zenital



Planta Construtiva



