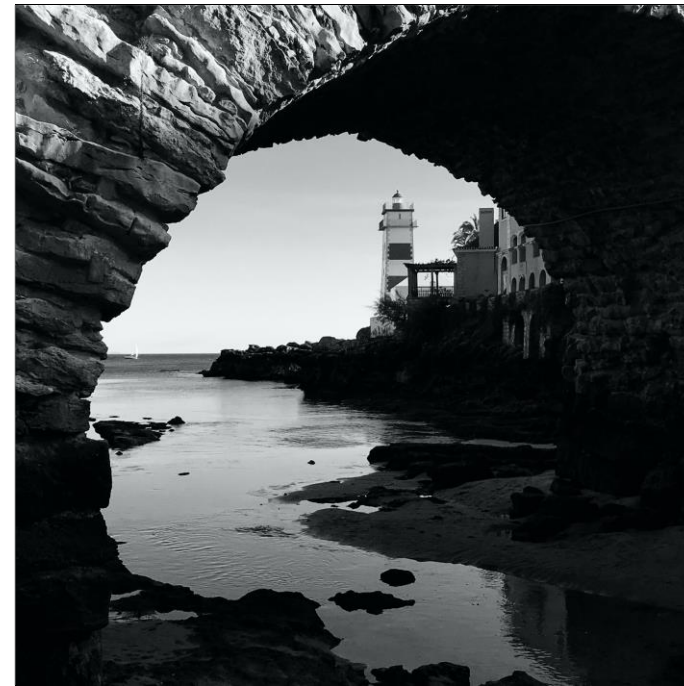
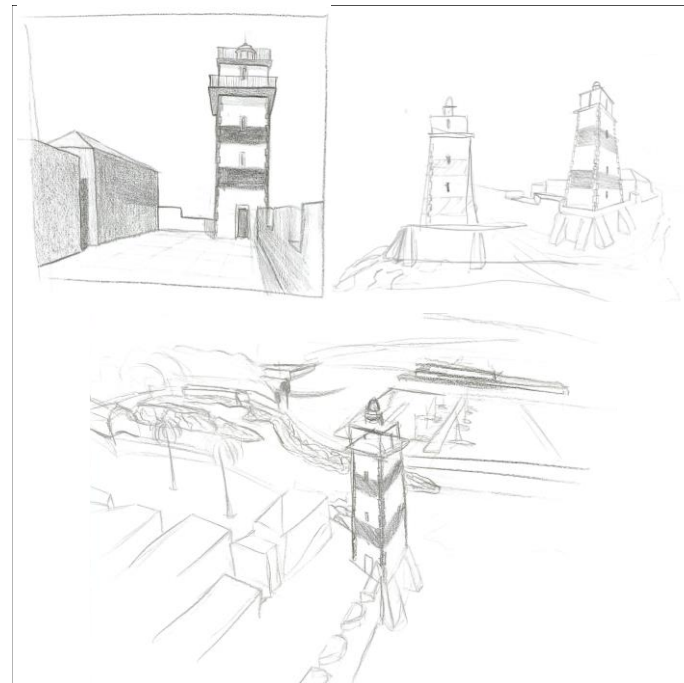


sítio . implantação



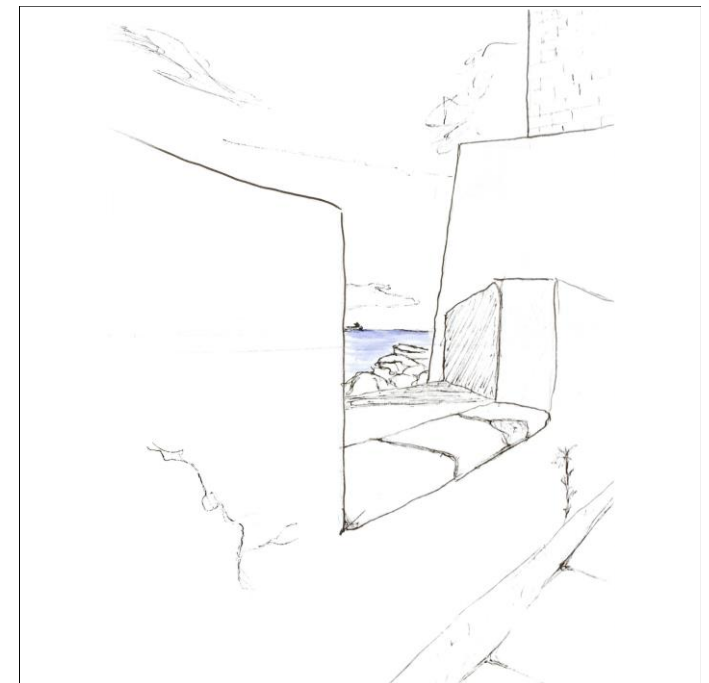
Guilherme Vieira . ano 2 . turma G . lab arq III



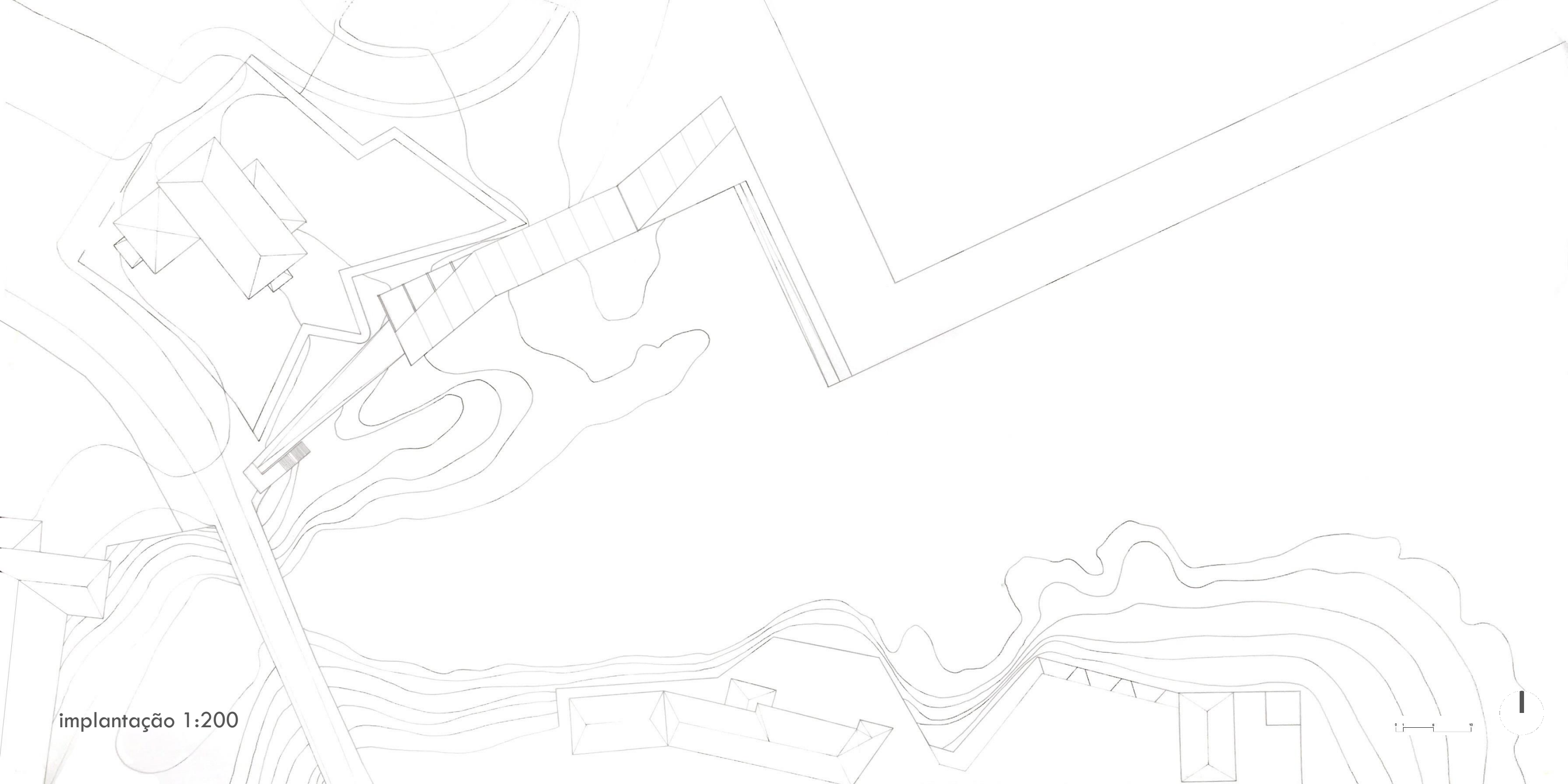
Guilherme Vieira . ano 2 . turma G . lab arq III



Guilherme Vieira . ano 2 . turma G . lab arq III

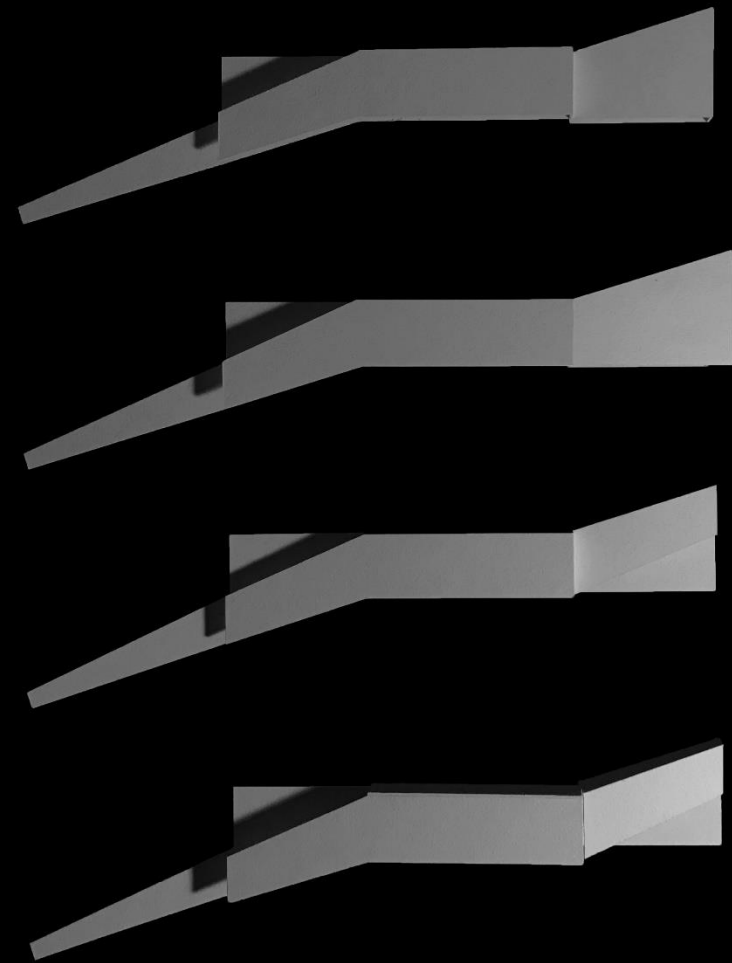
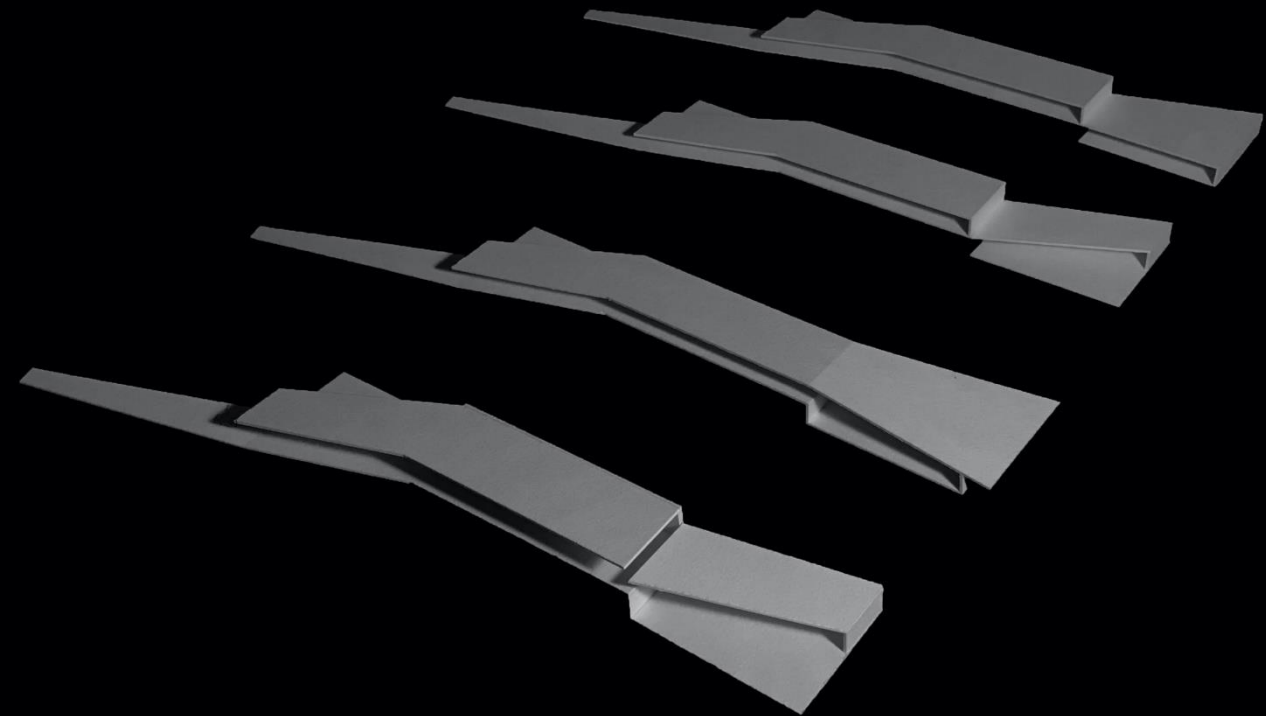


Guilherme Vieira . ano 2 . turma G . lab arq III

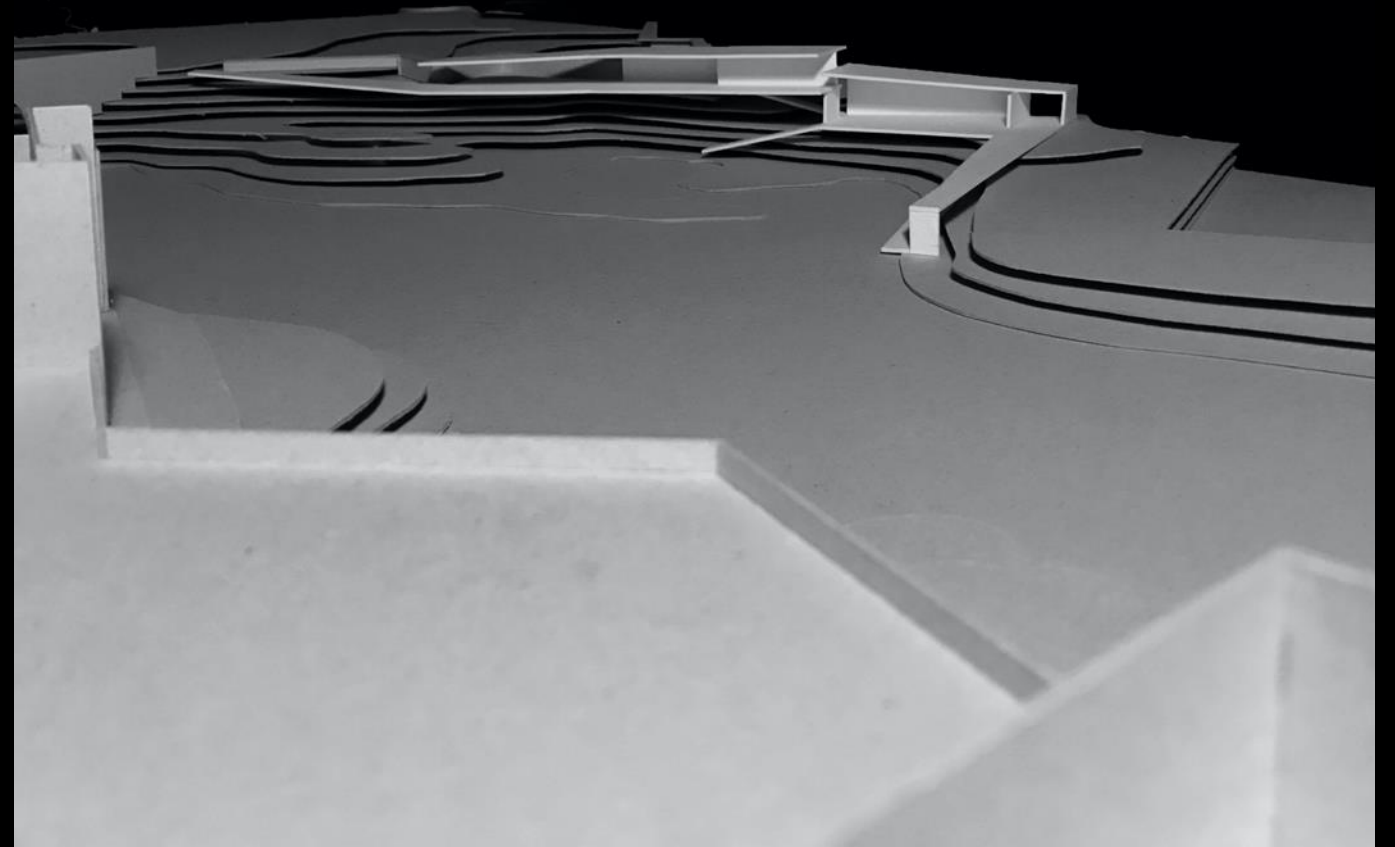
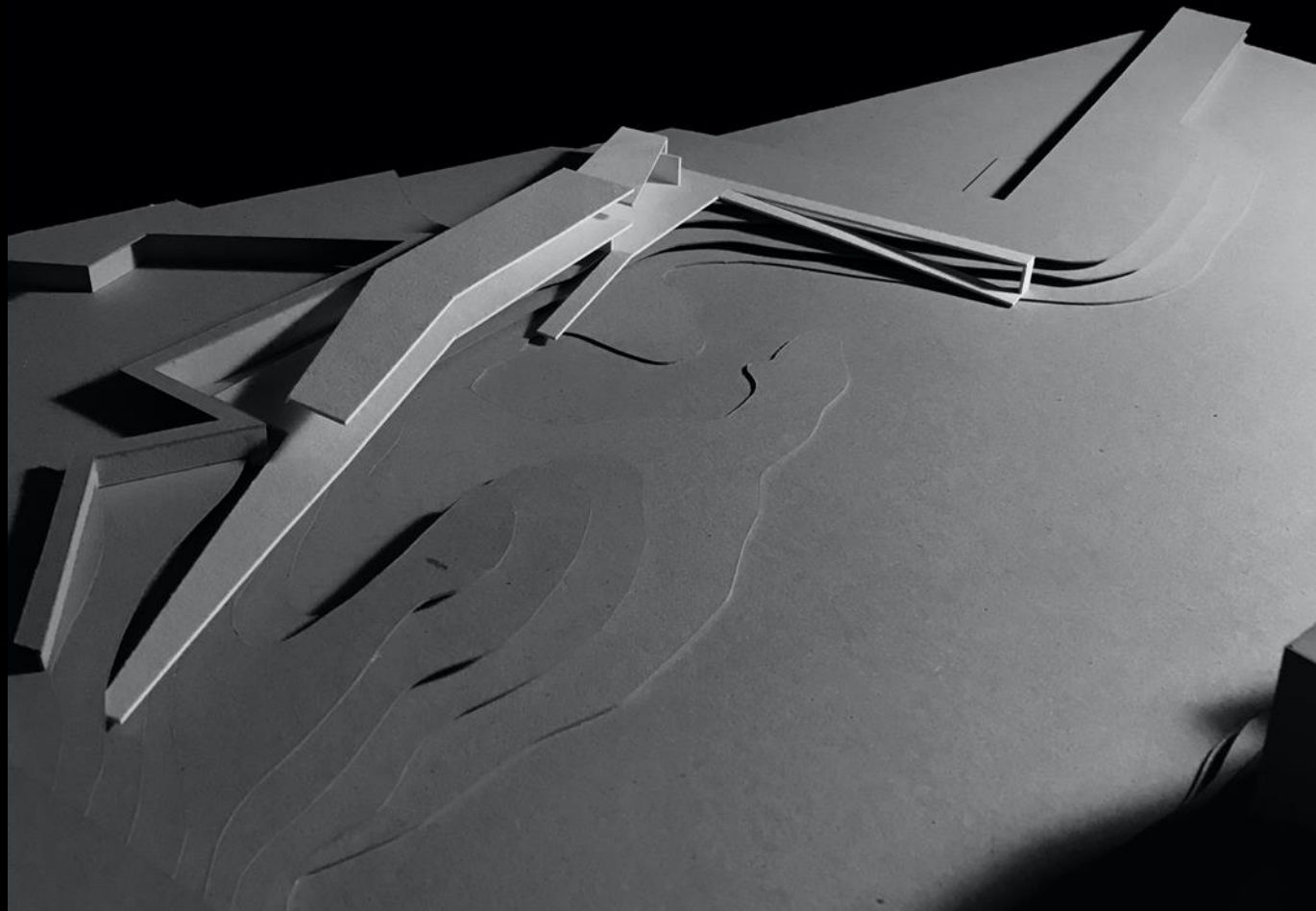


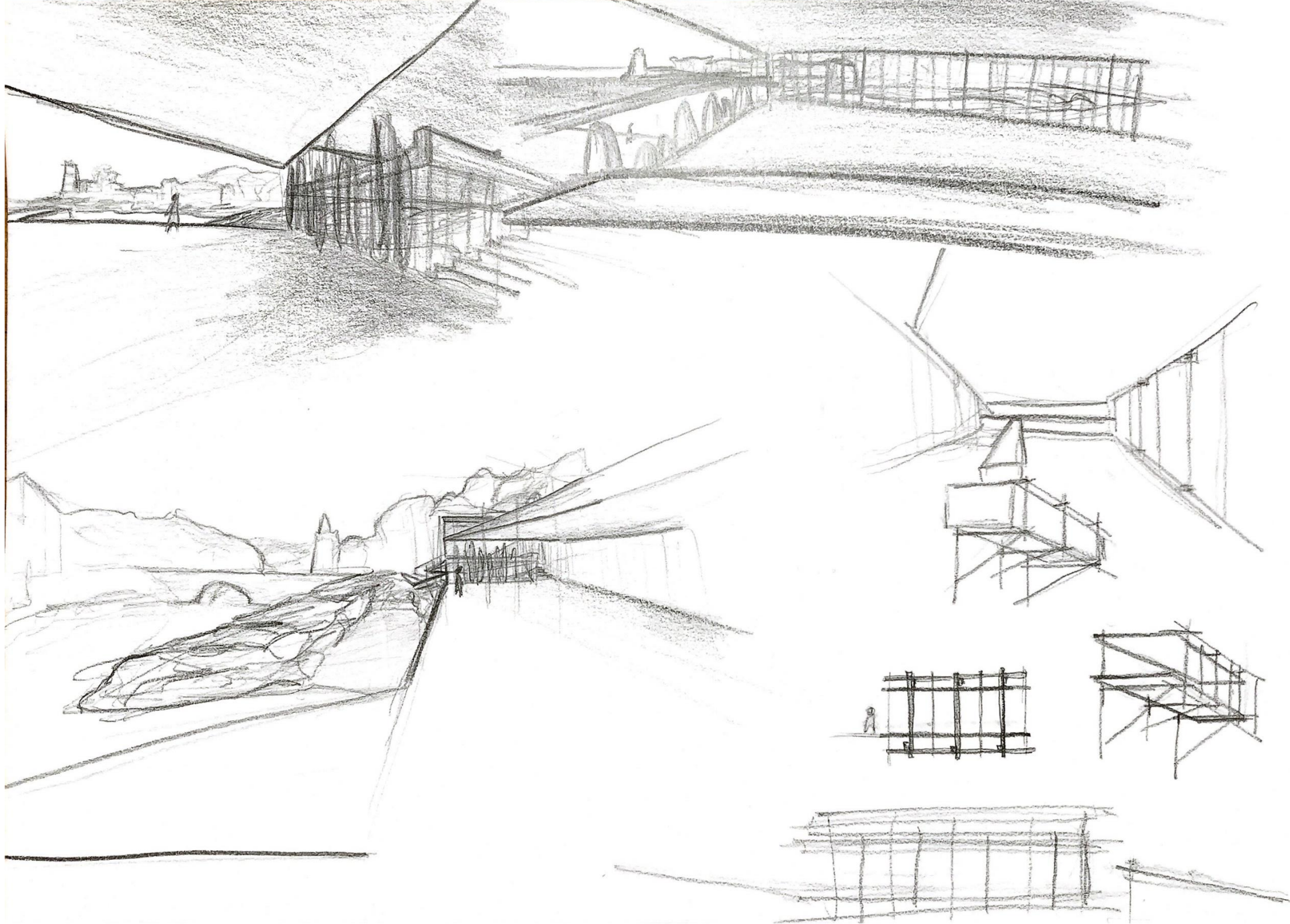
implantação 1:200







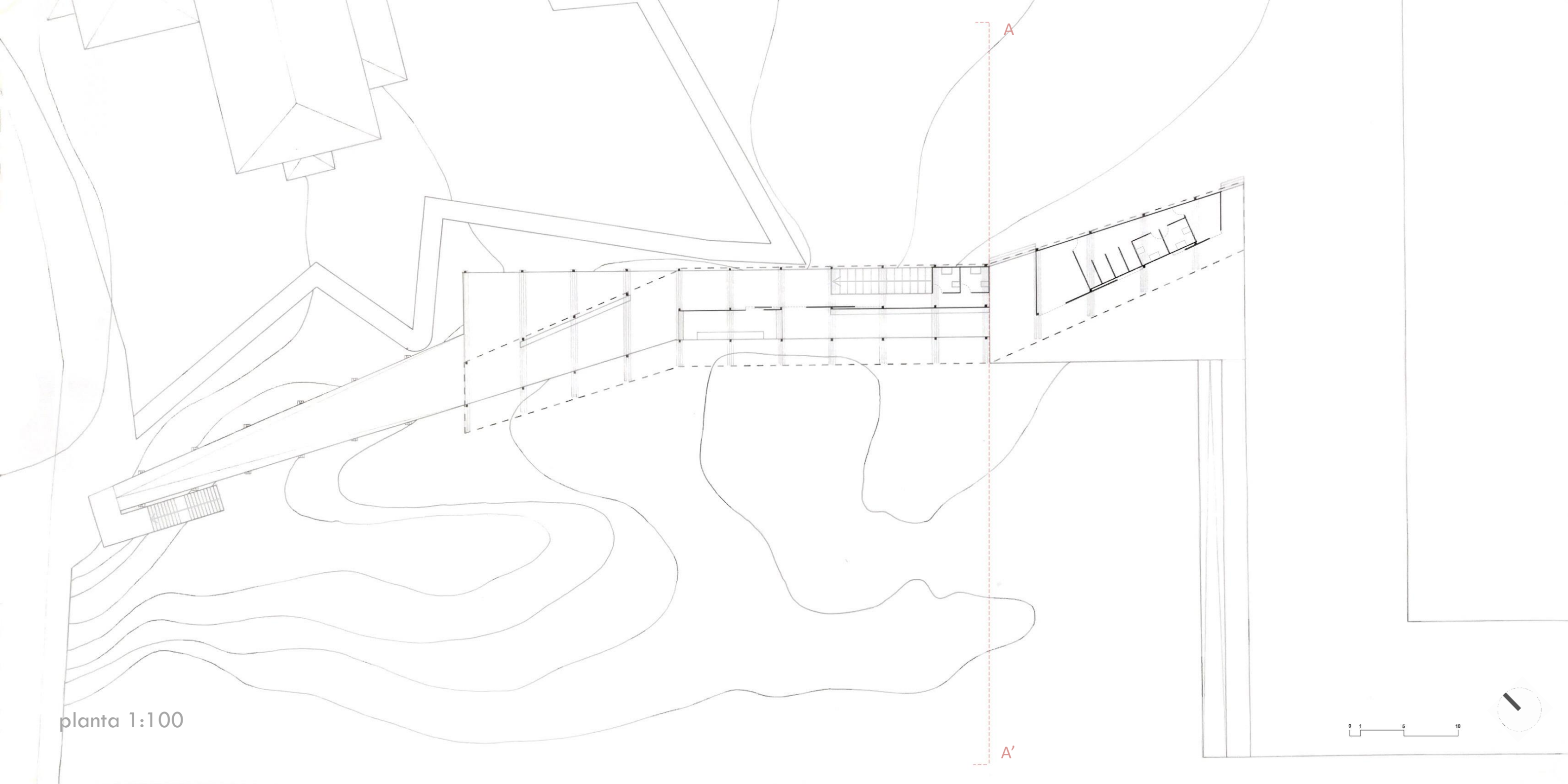
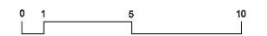








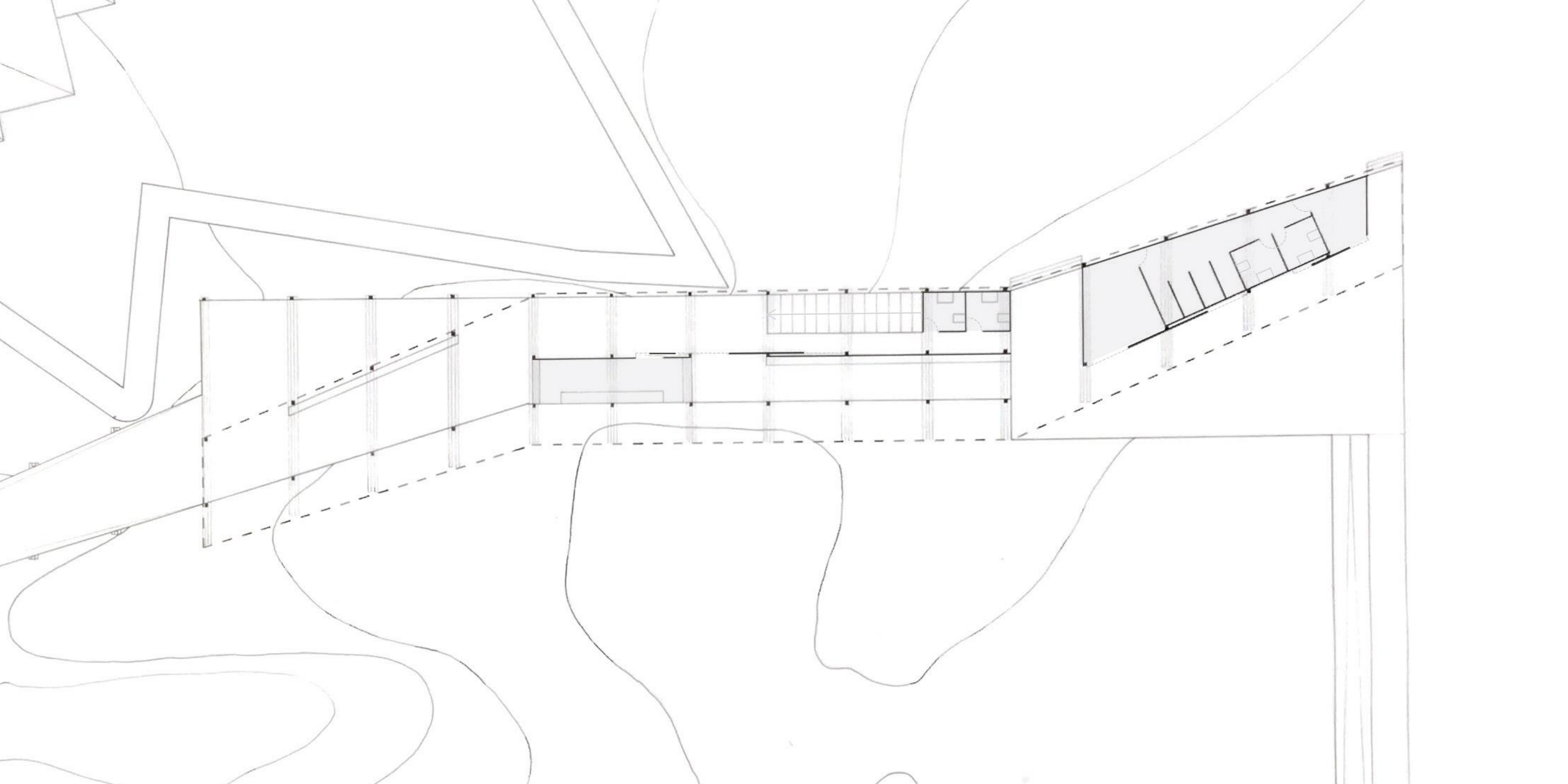
planta 1:100

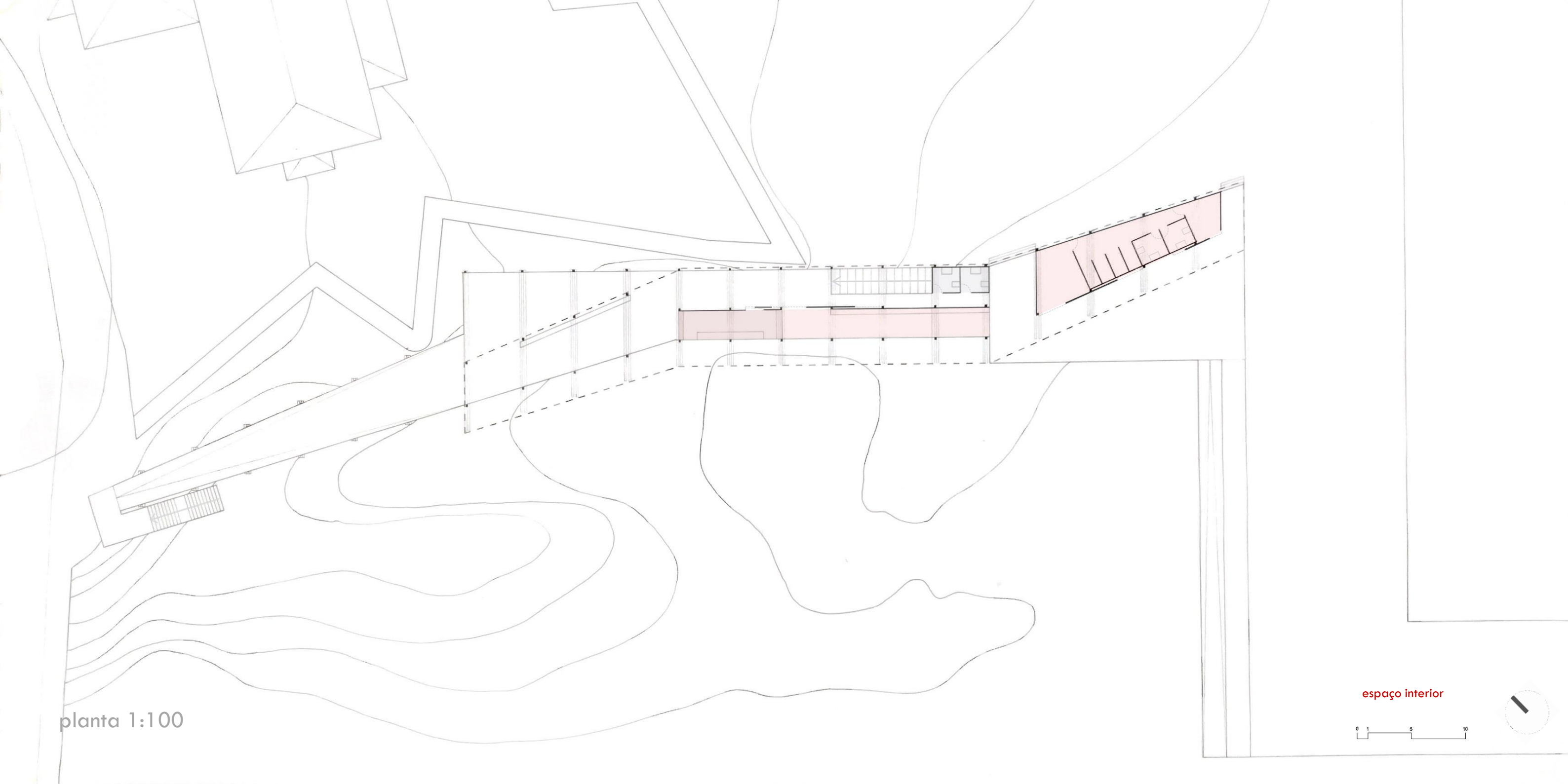


planta 1:100

- 1 - Bar/Zona de preparação
- 2 - Instalações sanitárias
- 3 - Armazém
- 4 - Balneários
- 5 - Recepção / Zona Administrativa



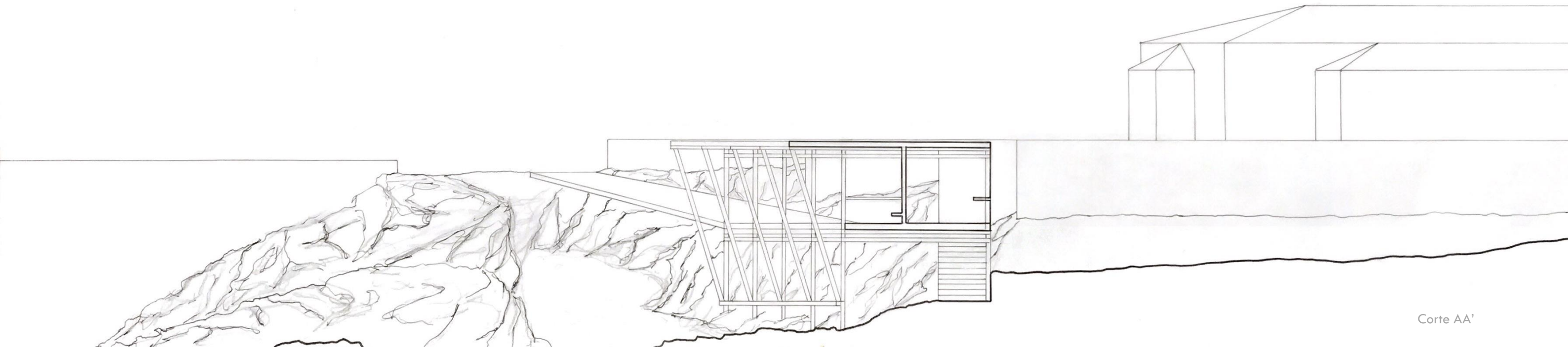




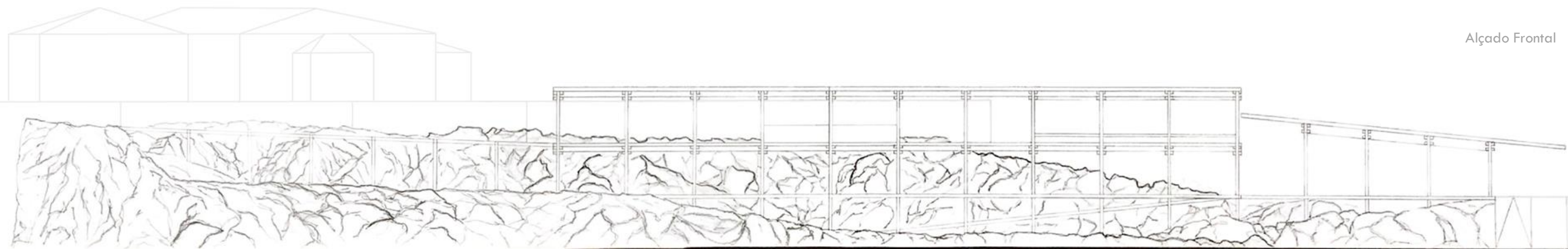
planta 1:100

espaço interior

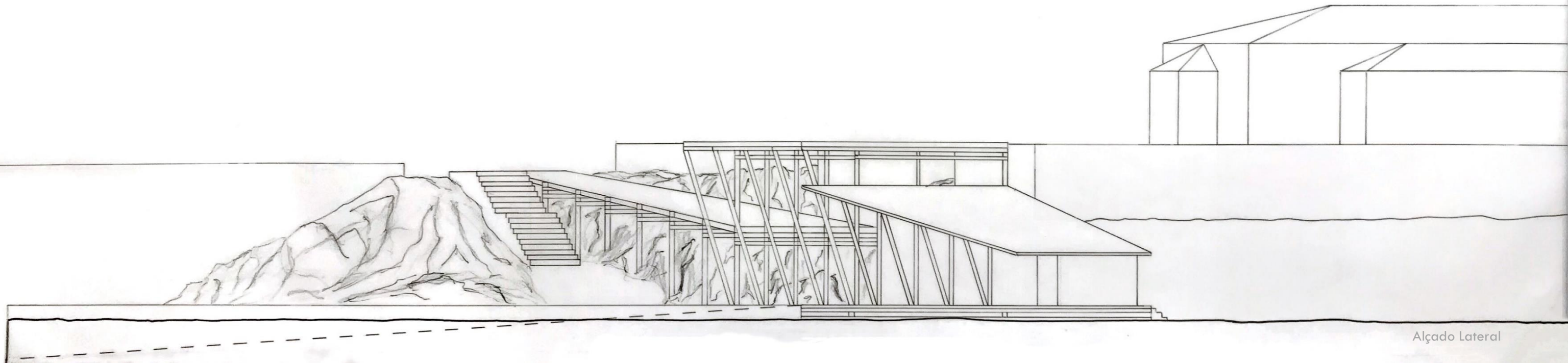




Corte AA'



Alçado Frontal

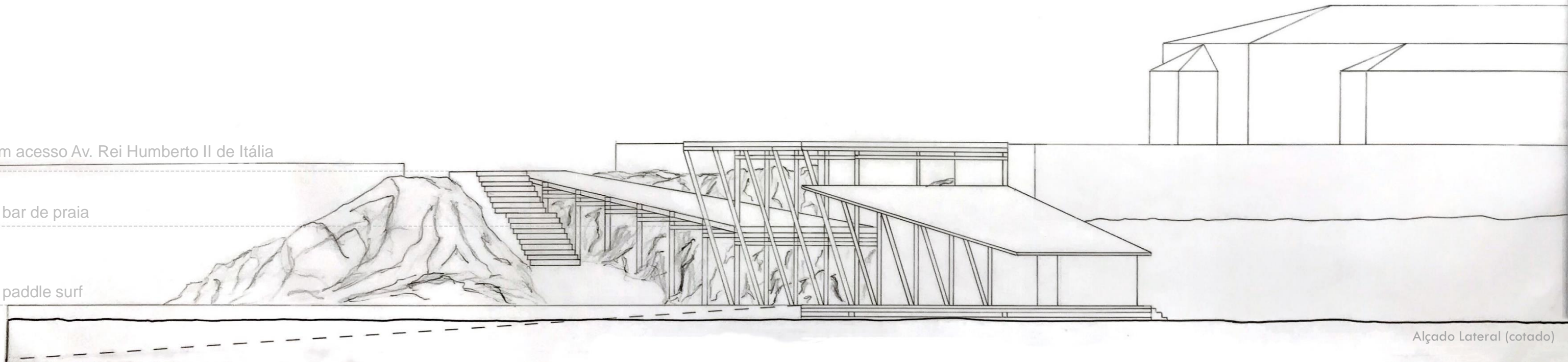




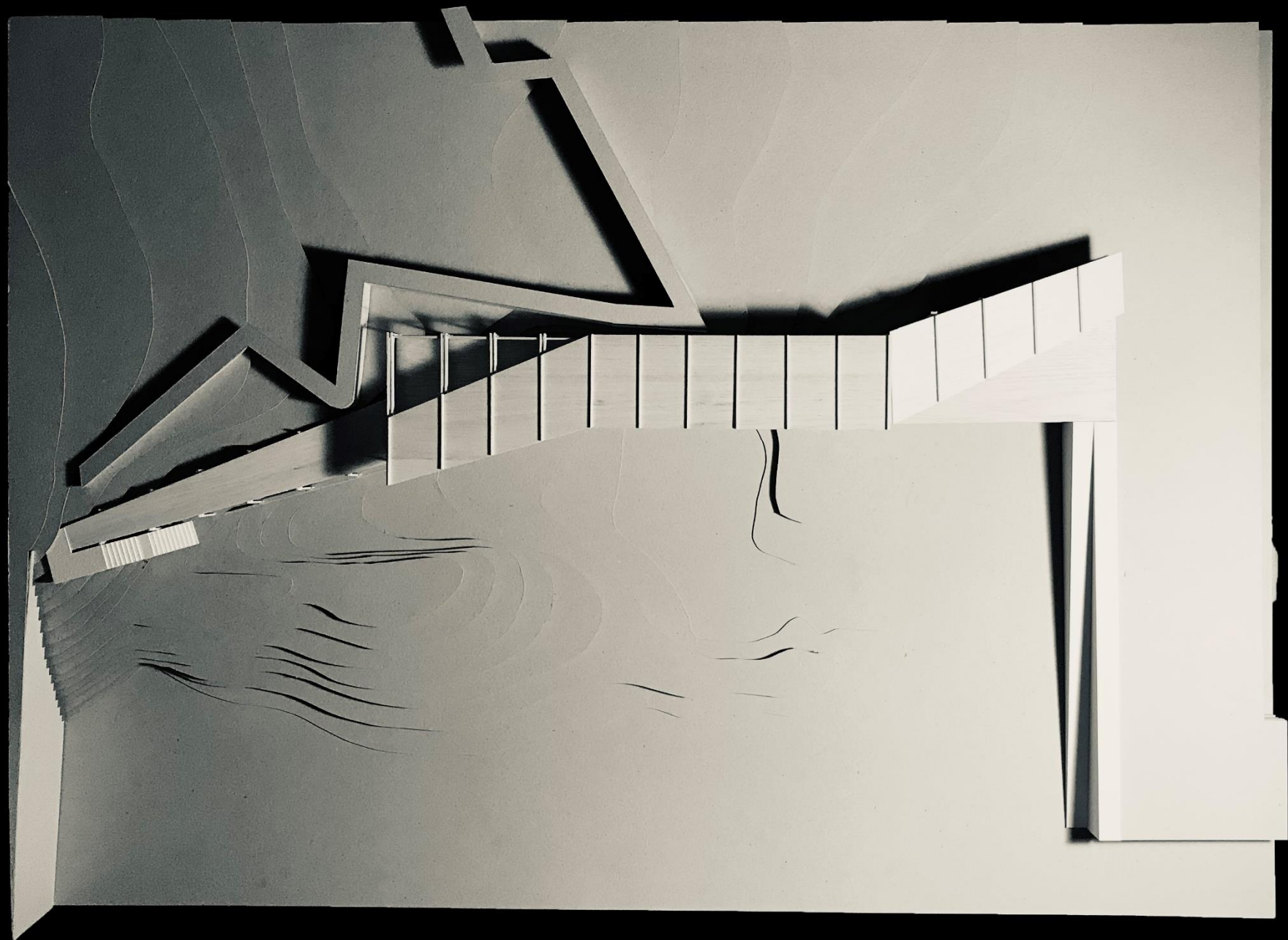
7,5m acesso Av. Rei Humberto II de Itália

6m bar de praia

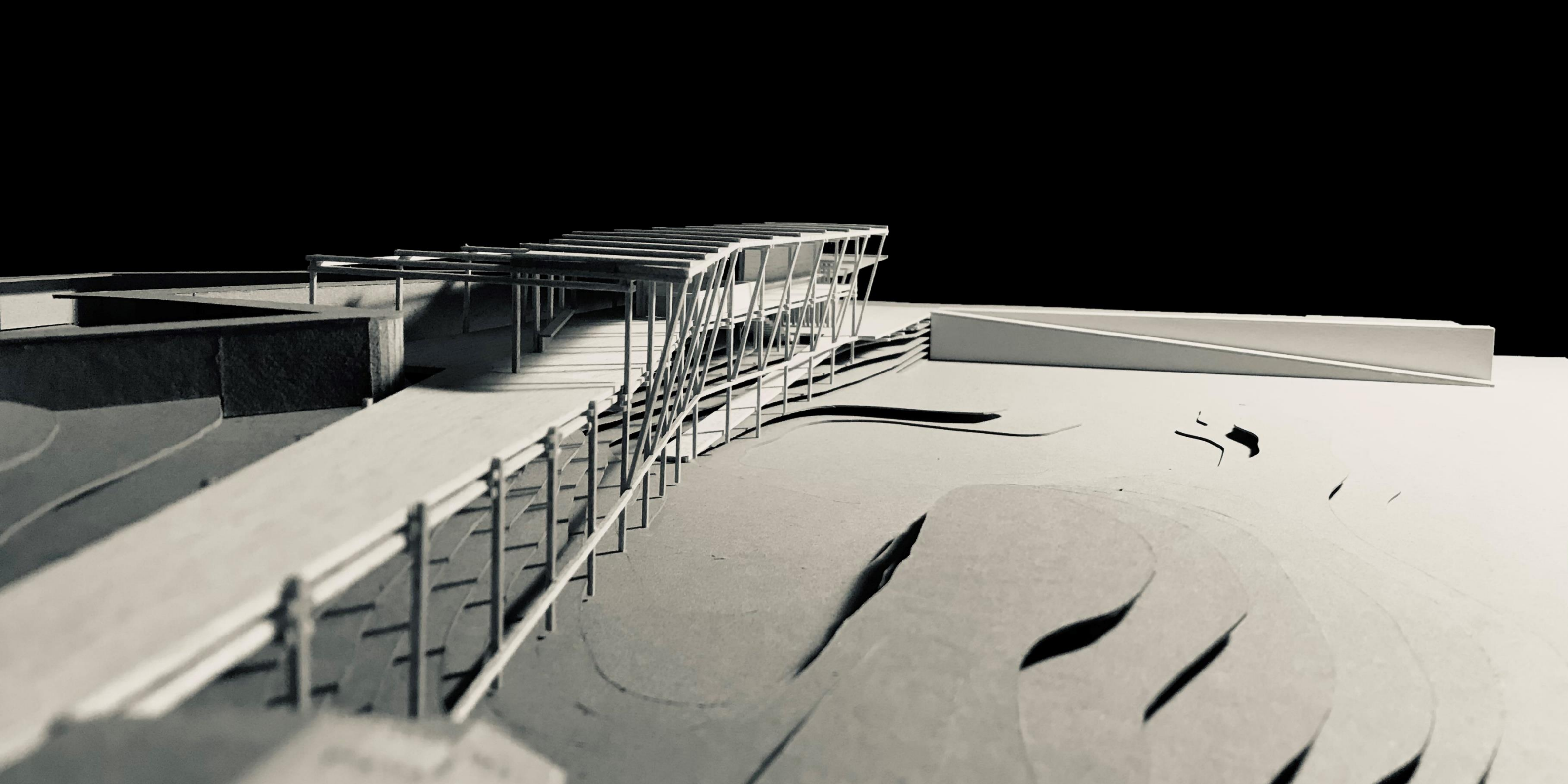
3m paddle surf

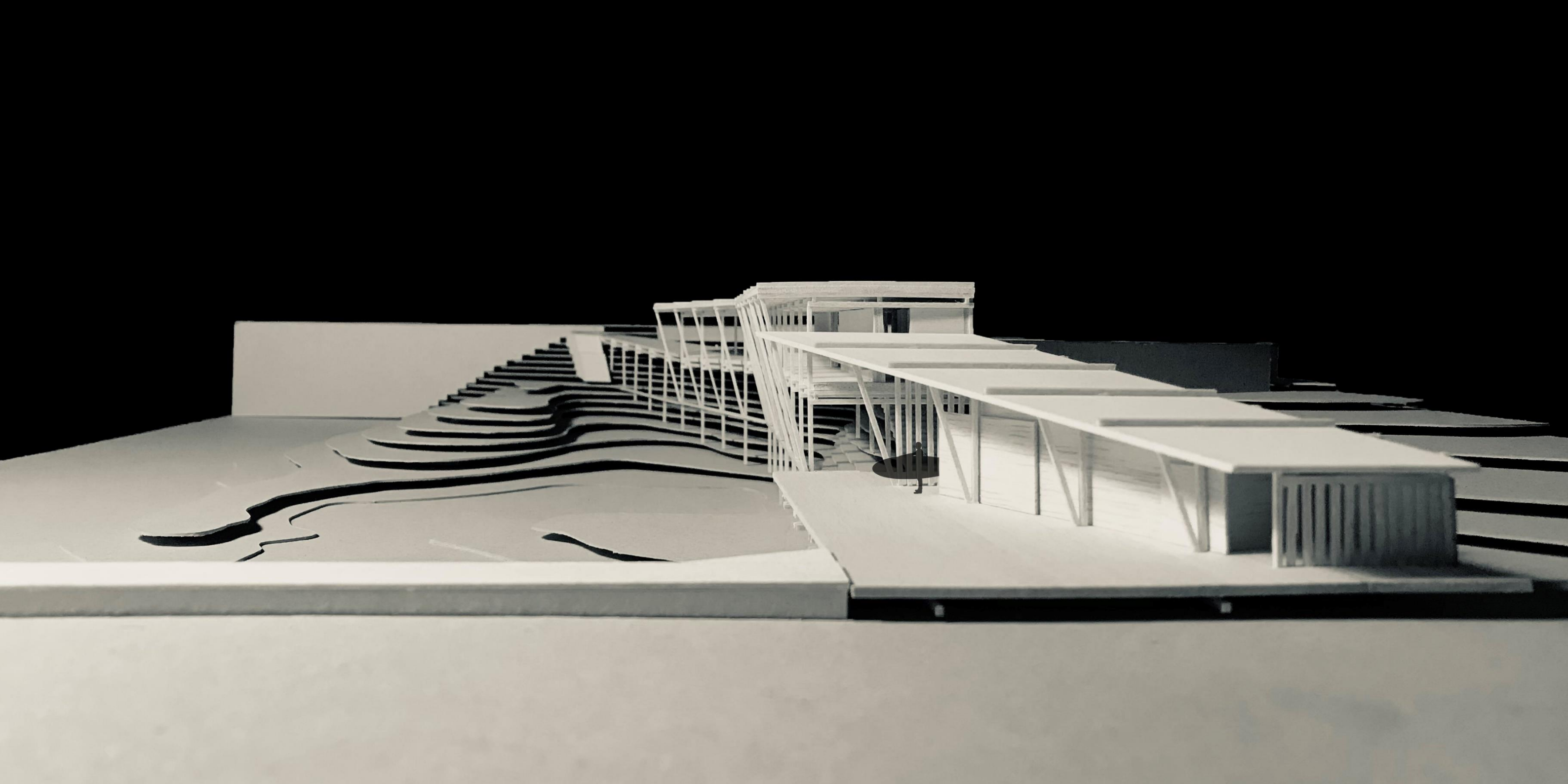


Alçado Lateral (cotado)

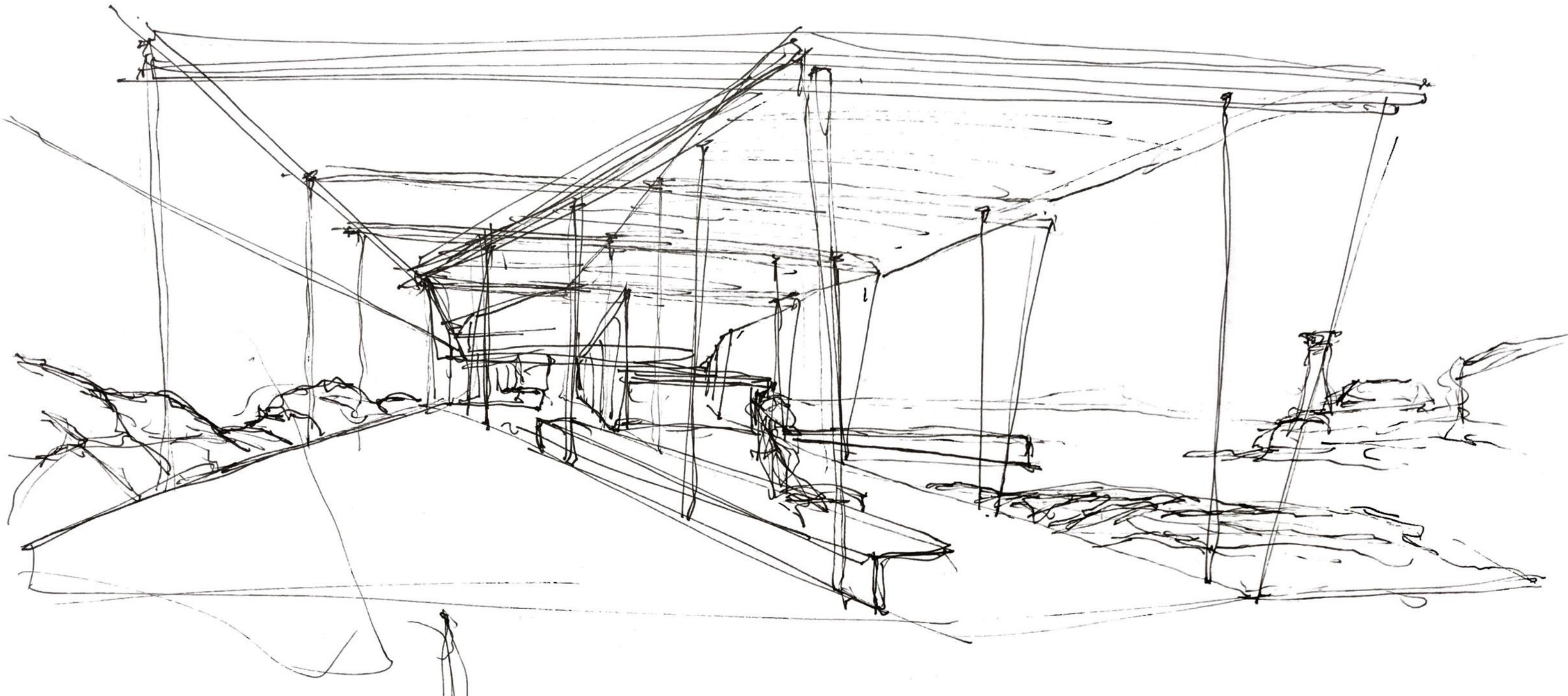
















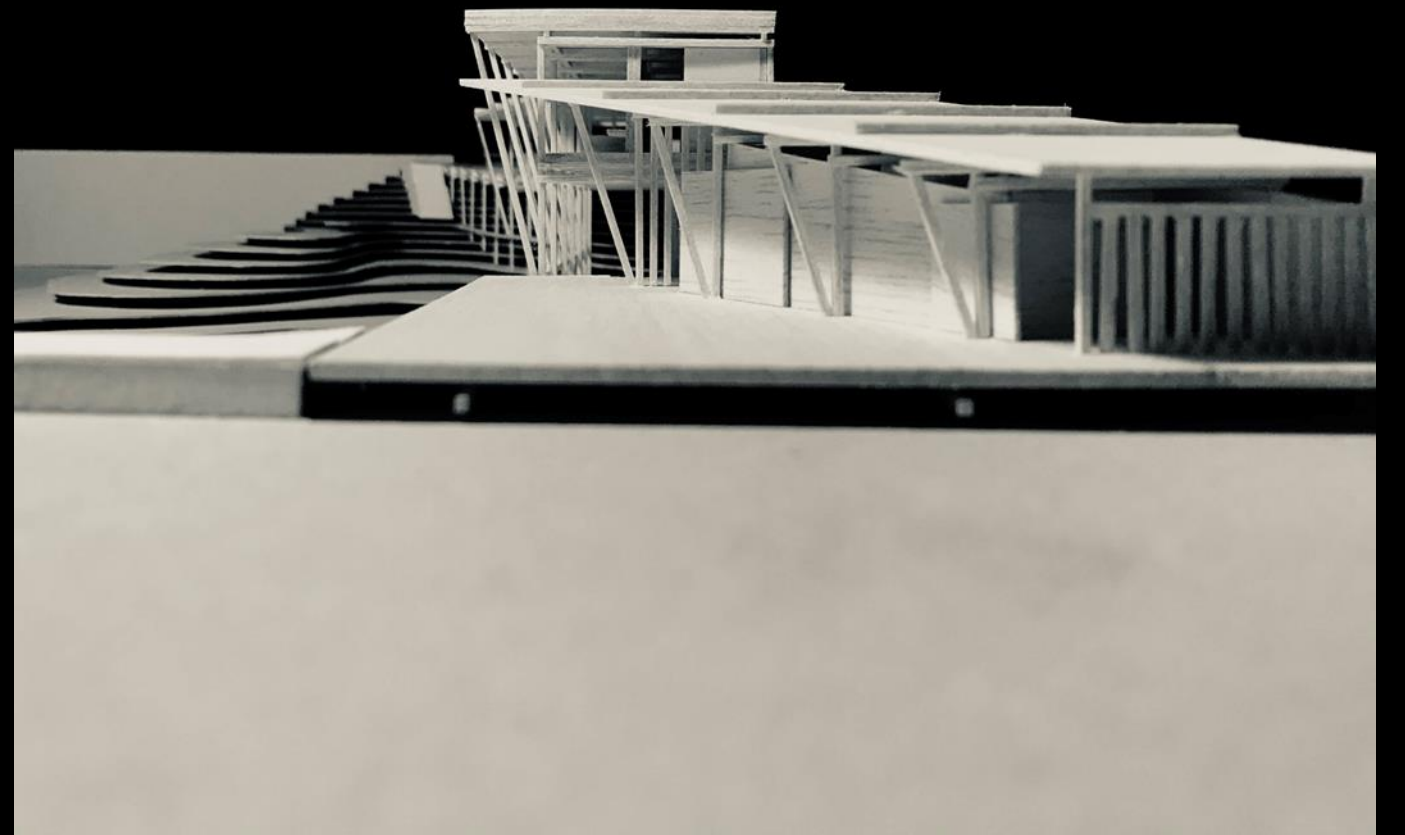
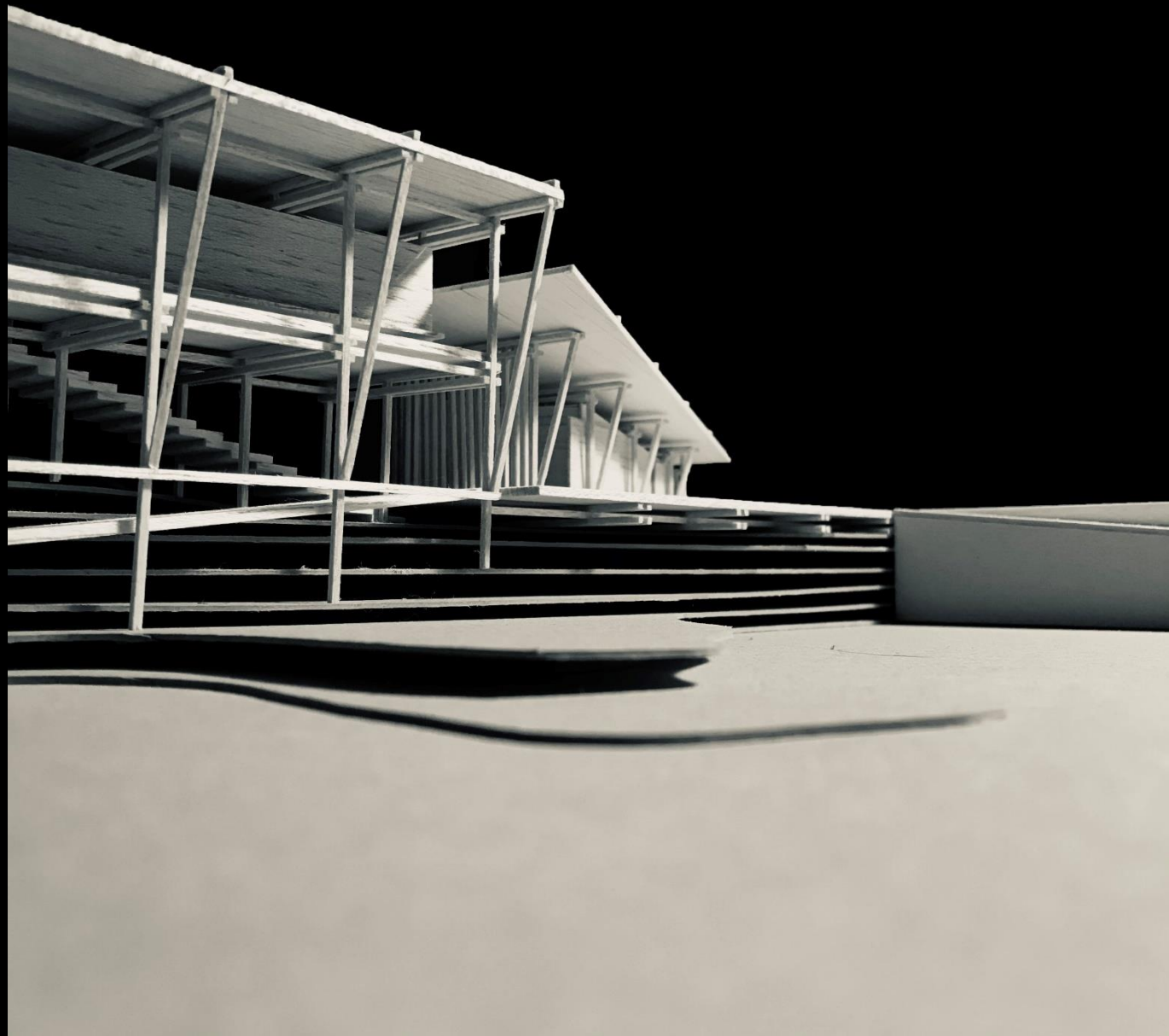




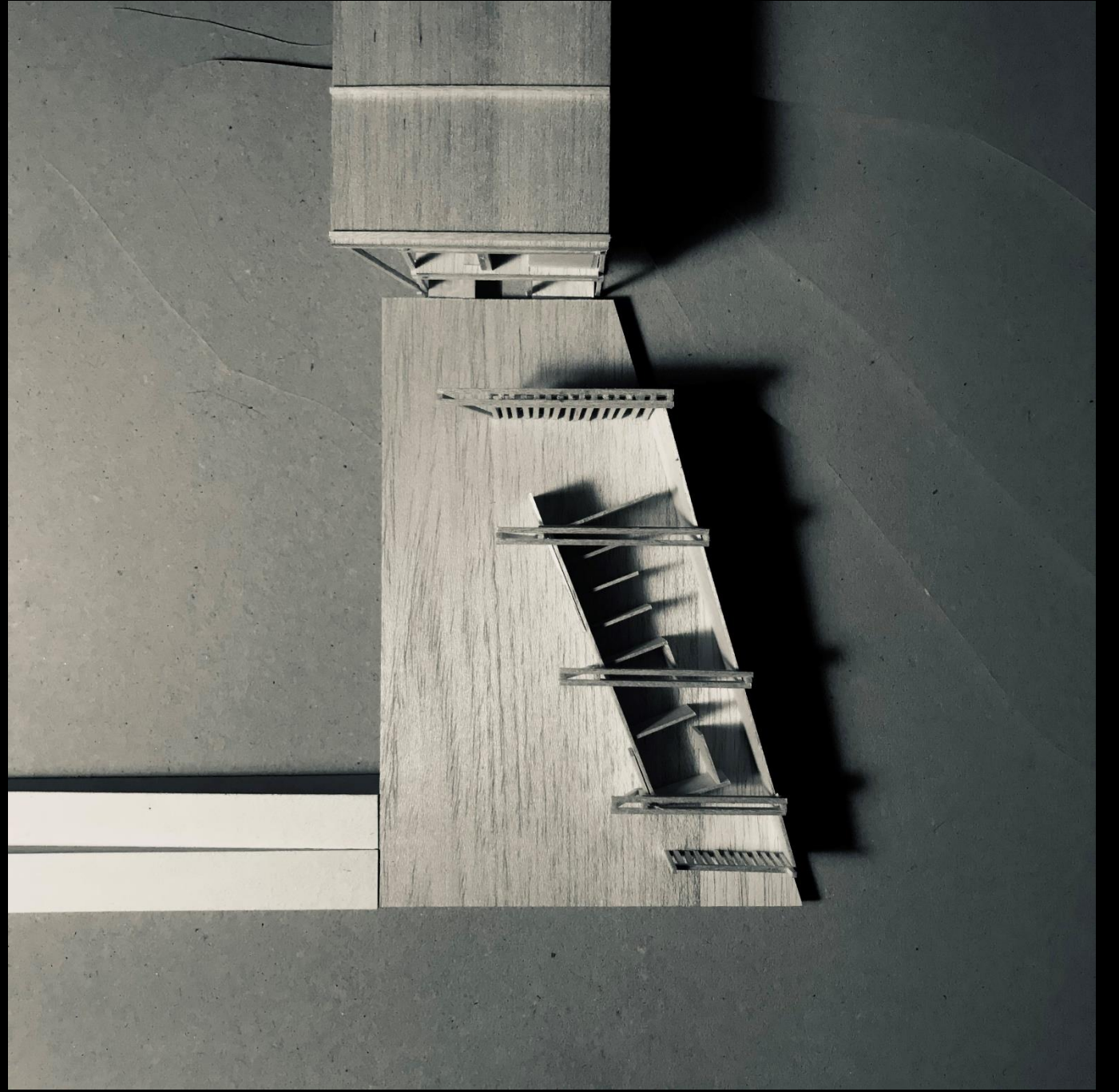
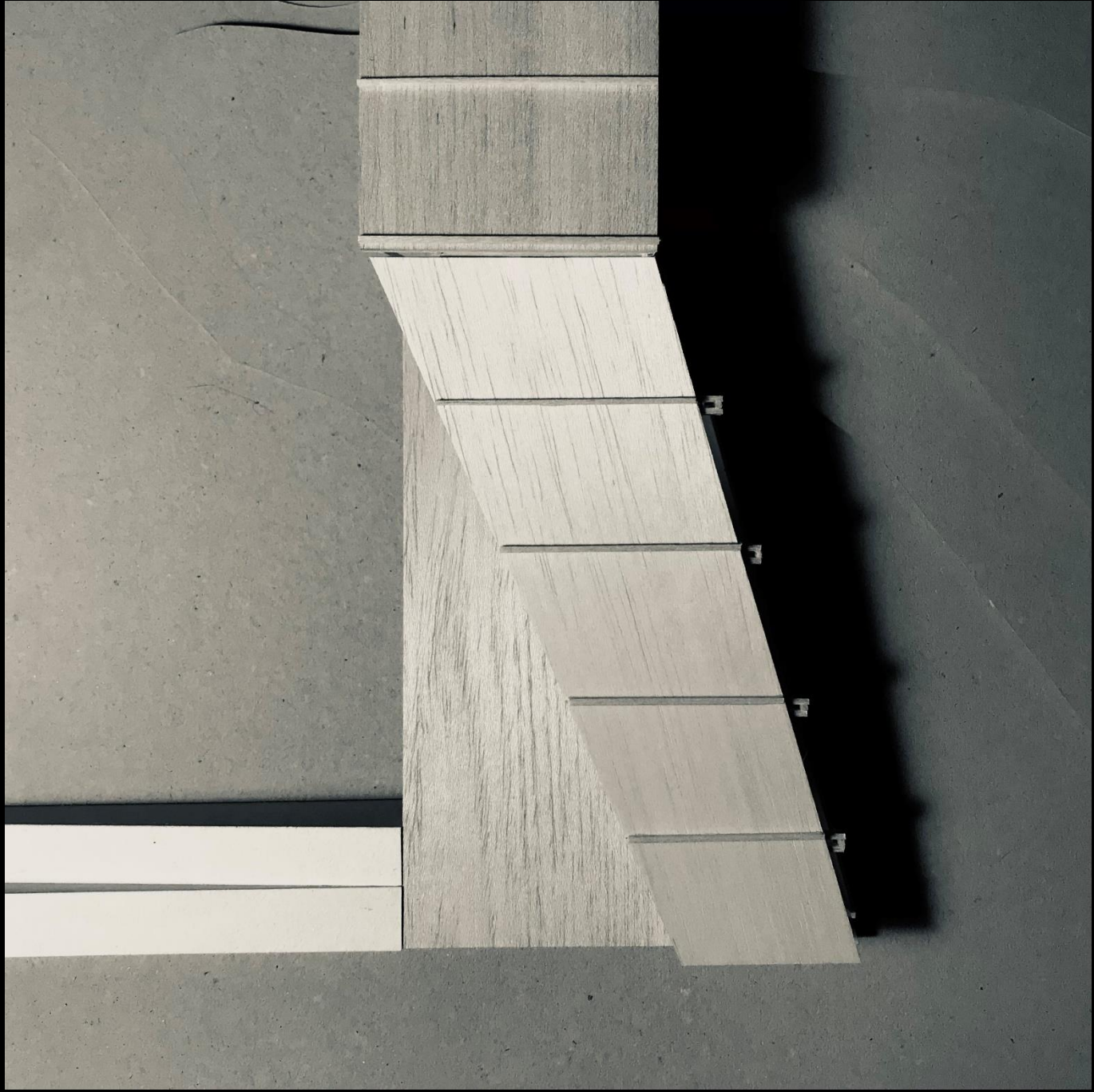




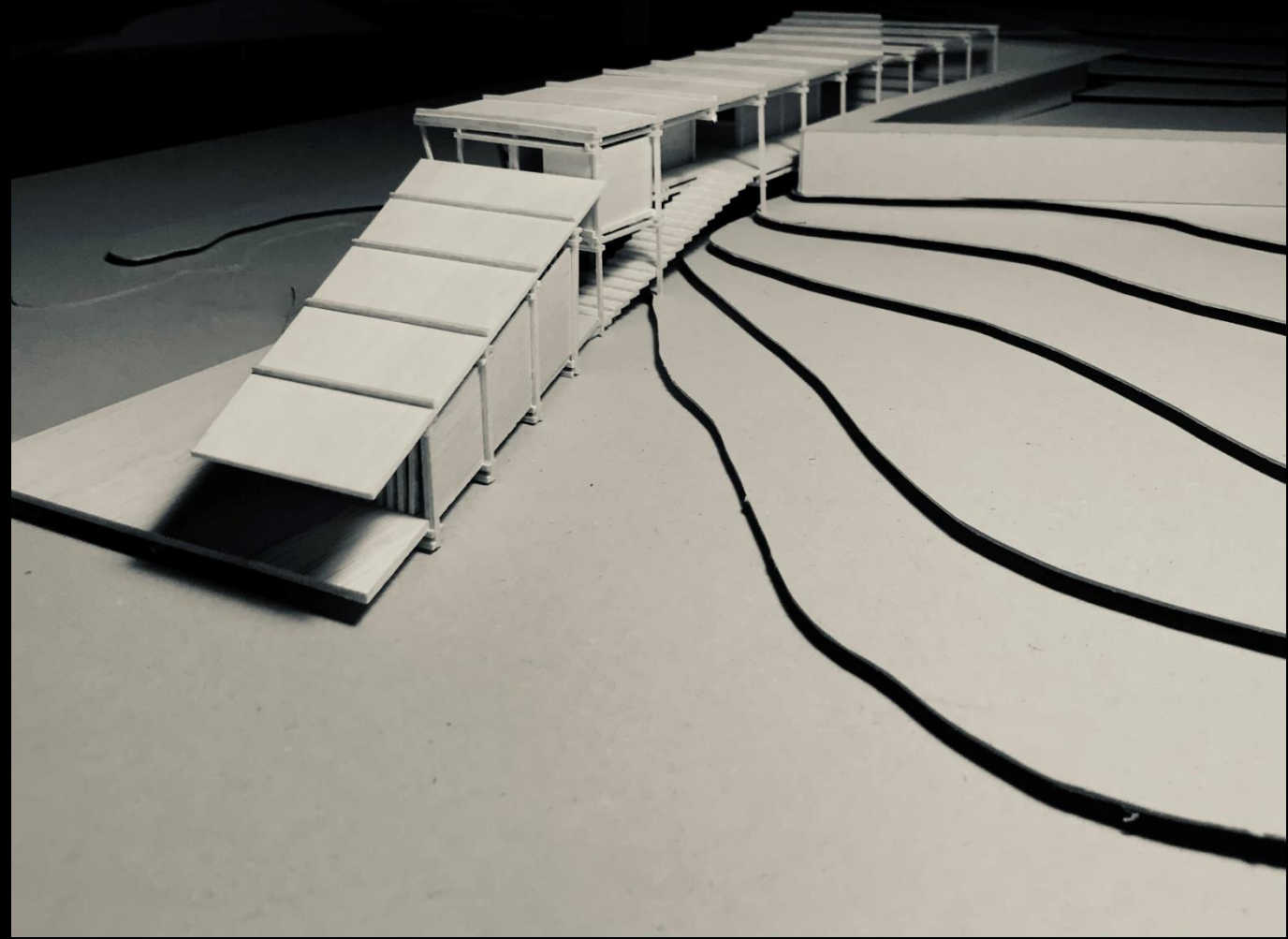




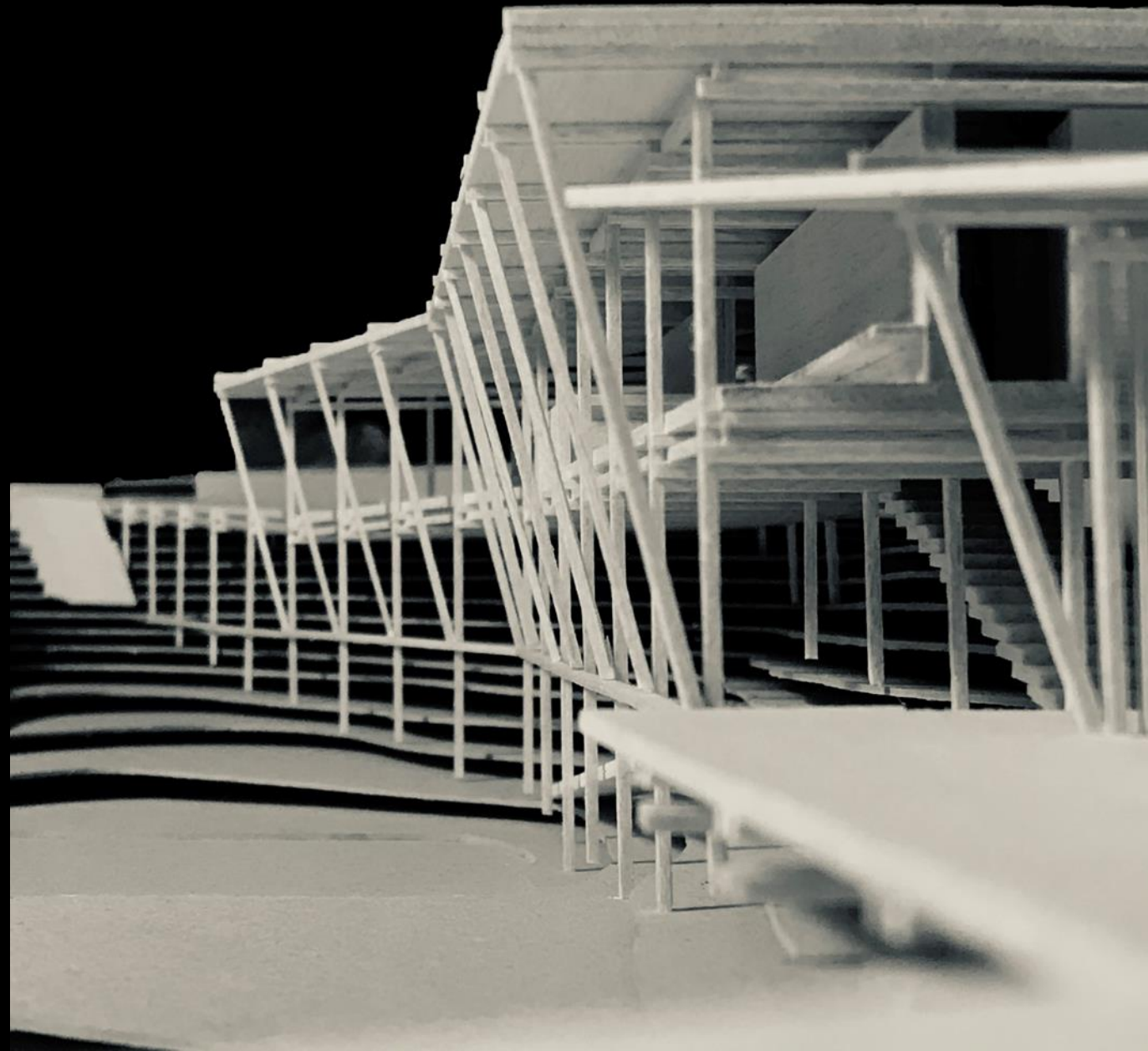


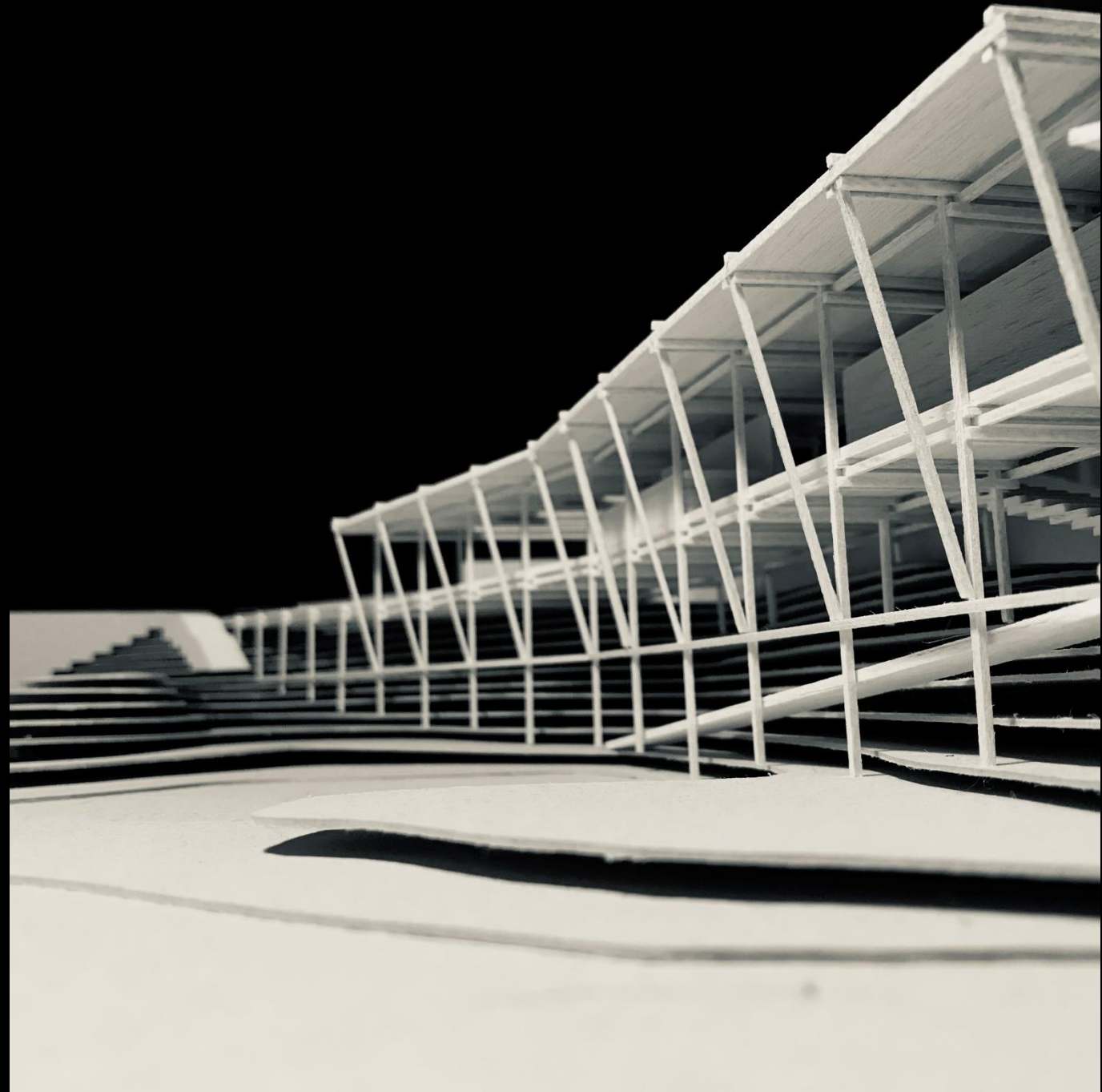






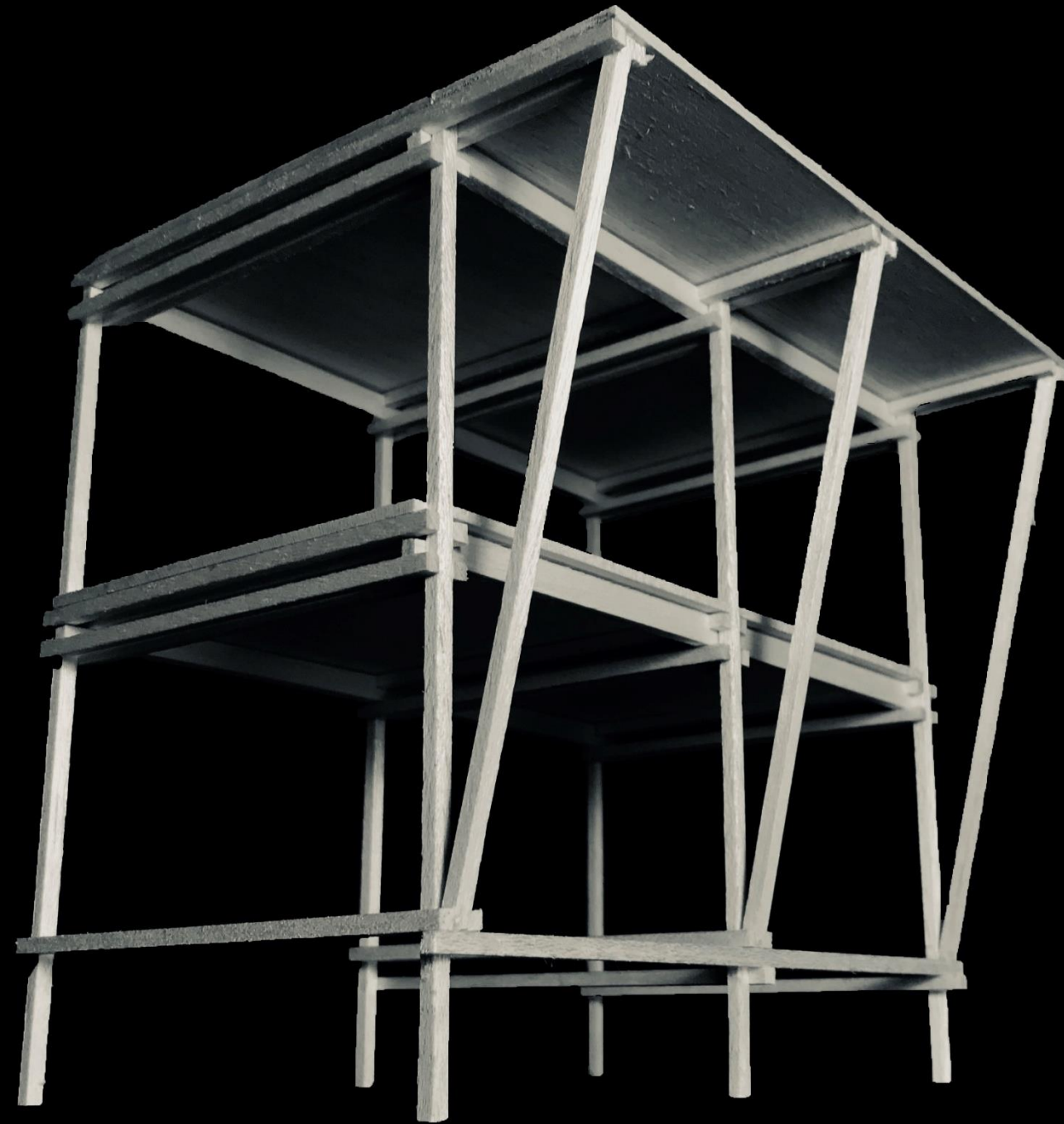












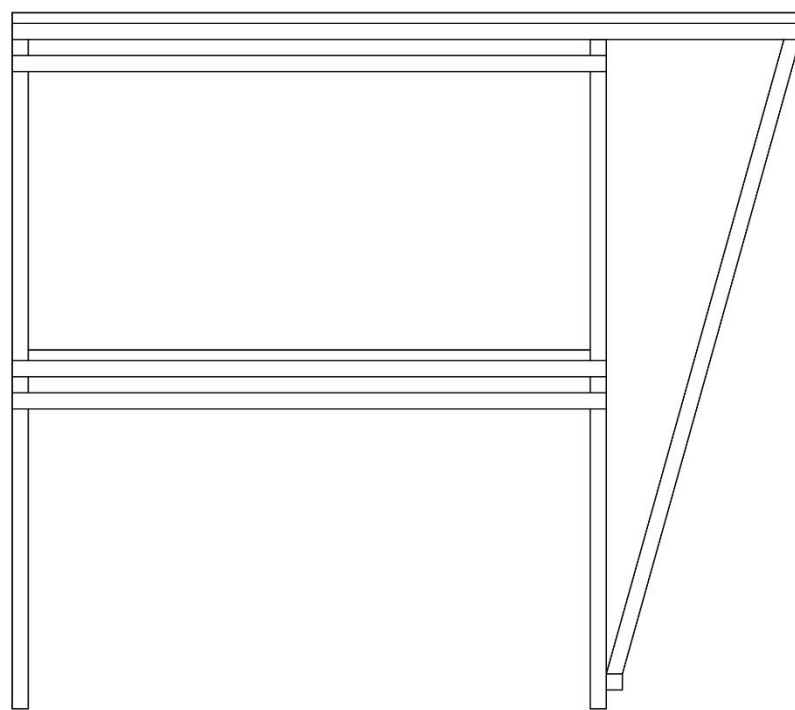
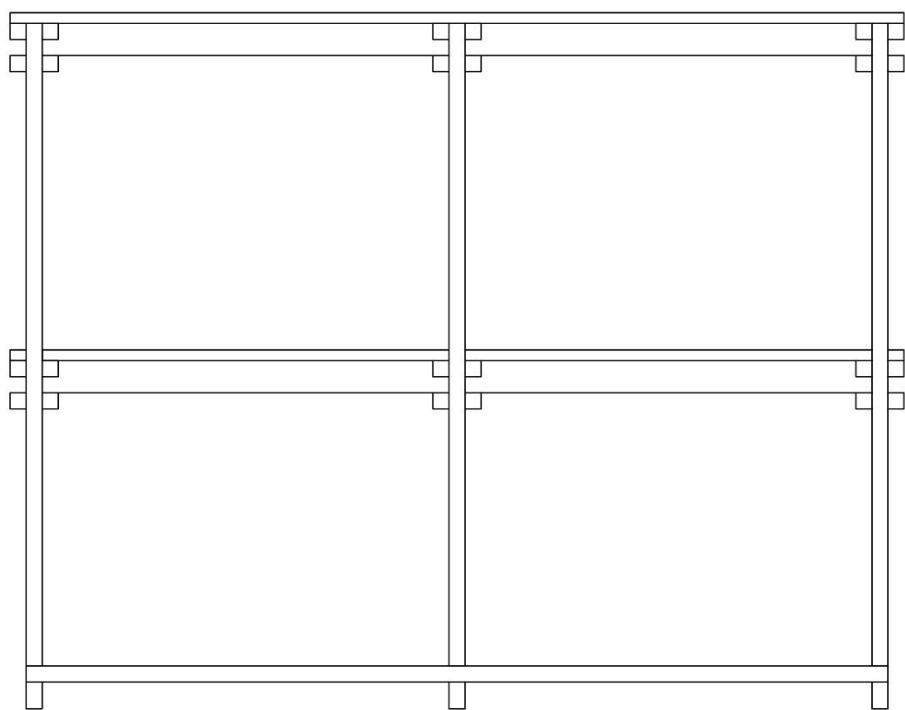


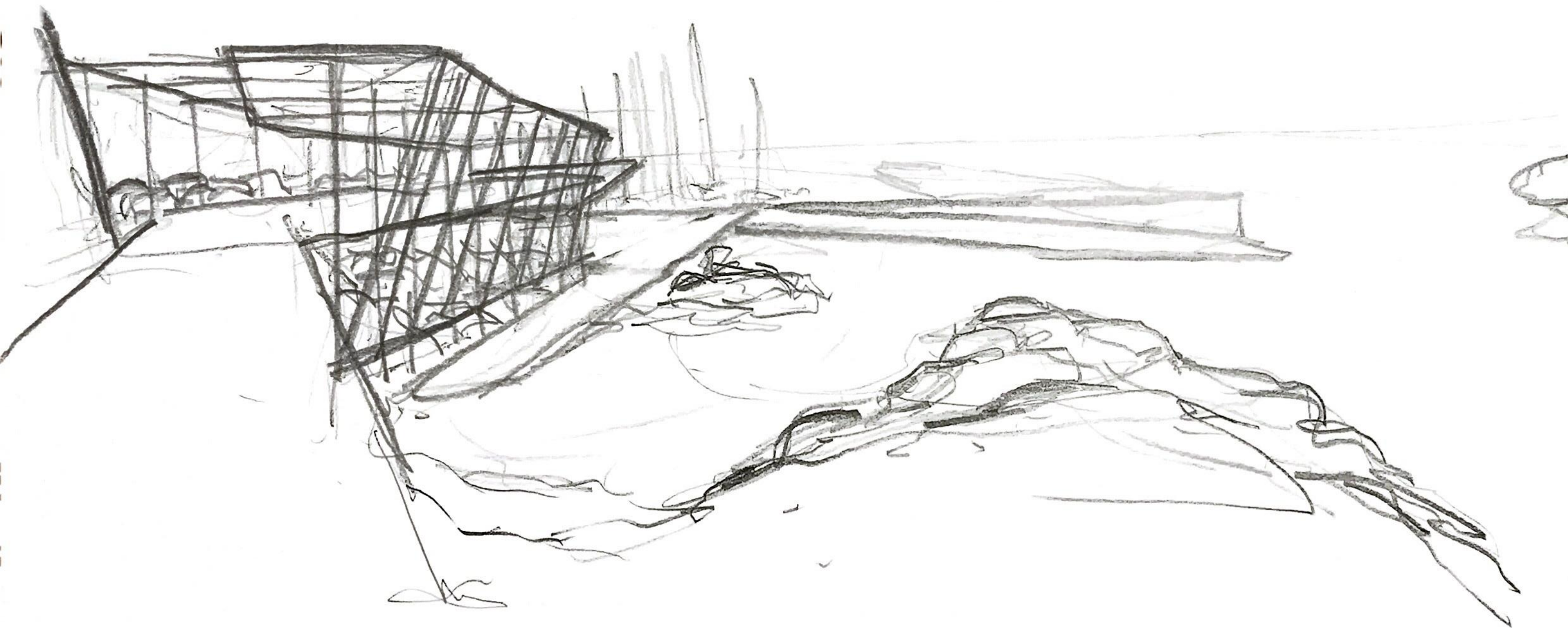












Steilneset Memorial . Peter Zumthor, Louise Bourgeois



Steilneset Memorial . Peter Zumthor, Louise Bourgeois





