

Laboratório de Arquitetura I

1º semestre

Ricardo Janardo 20201336

[Exercício III]

Casa

Pavilhão

contexto

objecto

espaço

Análise

Narrativa descritiva

Processo

[Exercício II]

Casas | Fase 1

Casas | Fase 2

[Exercício I]

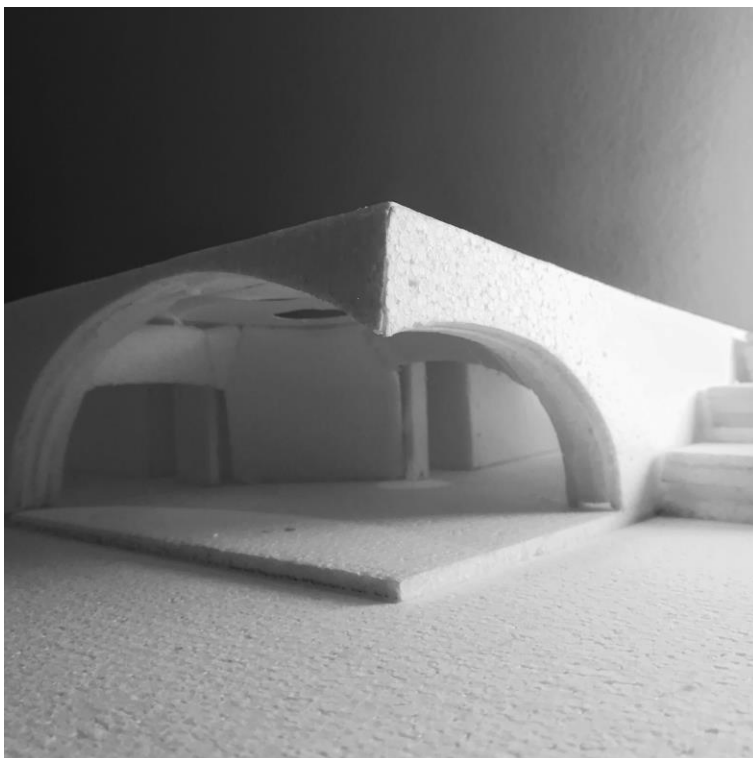
Três fotografias

O Pavilhão: um espaço para pensar

Caso de estudo . autor

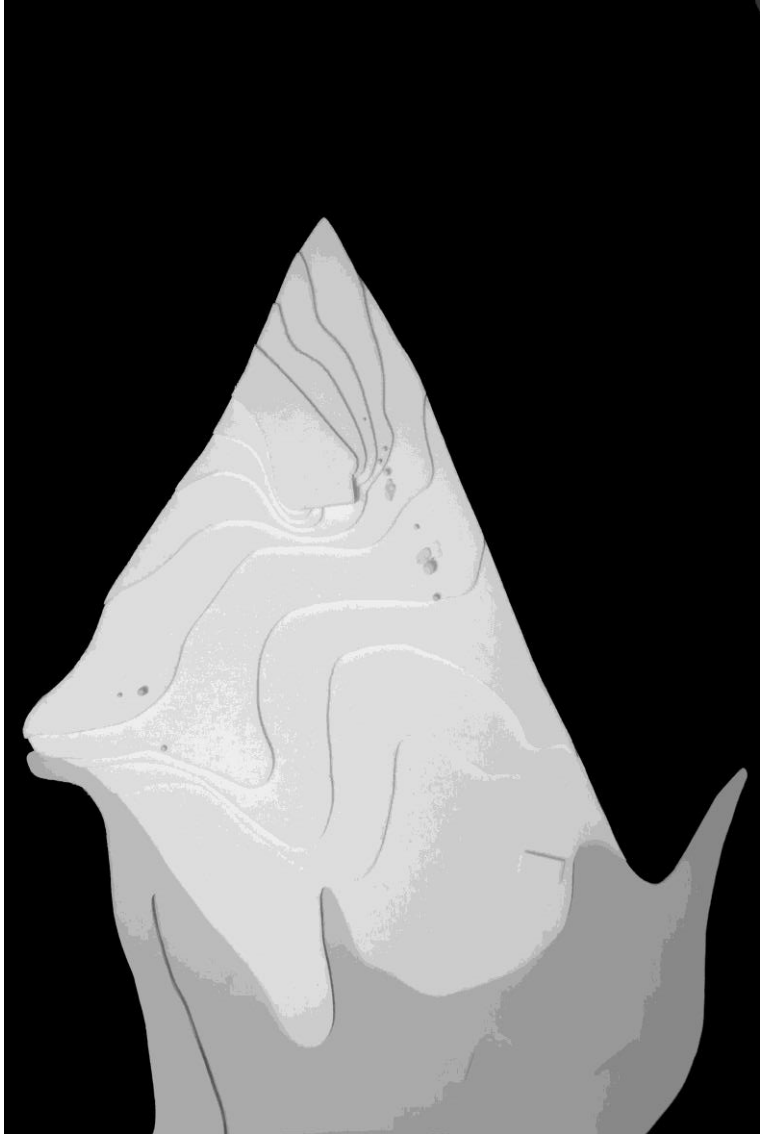
Casa

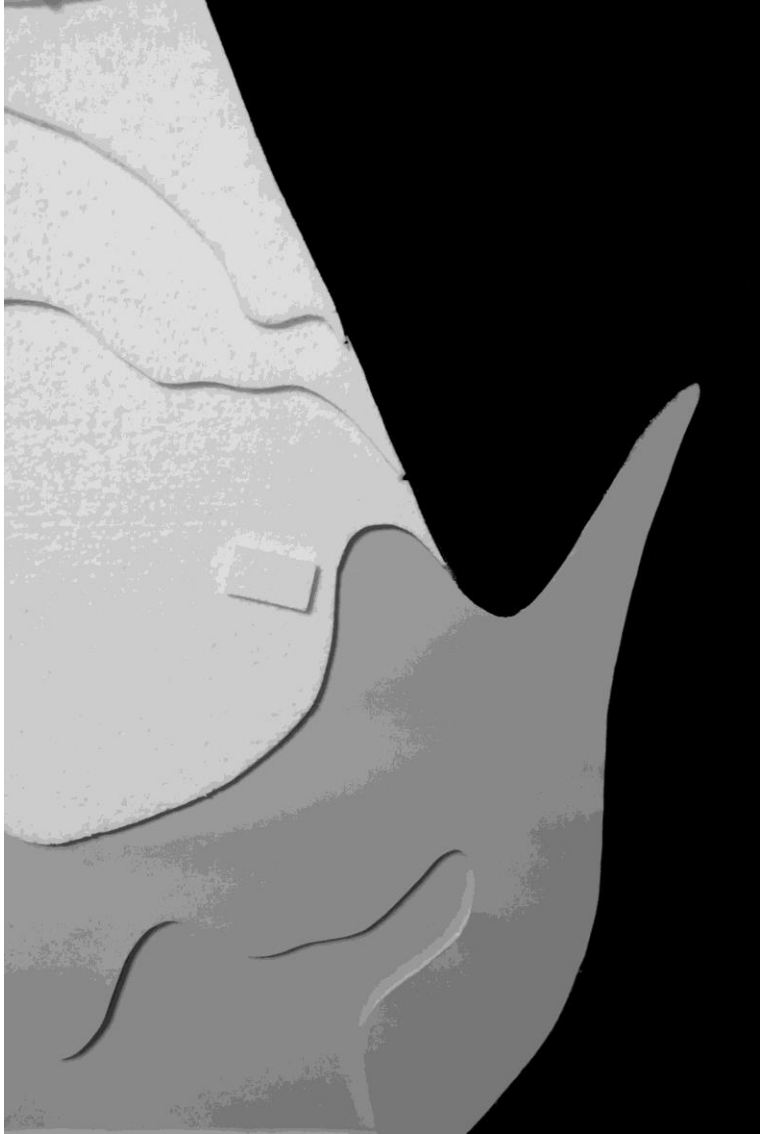
Casa de Monsaraz . Aires Mateus

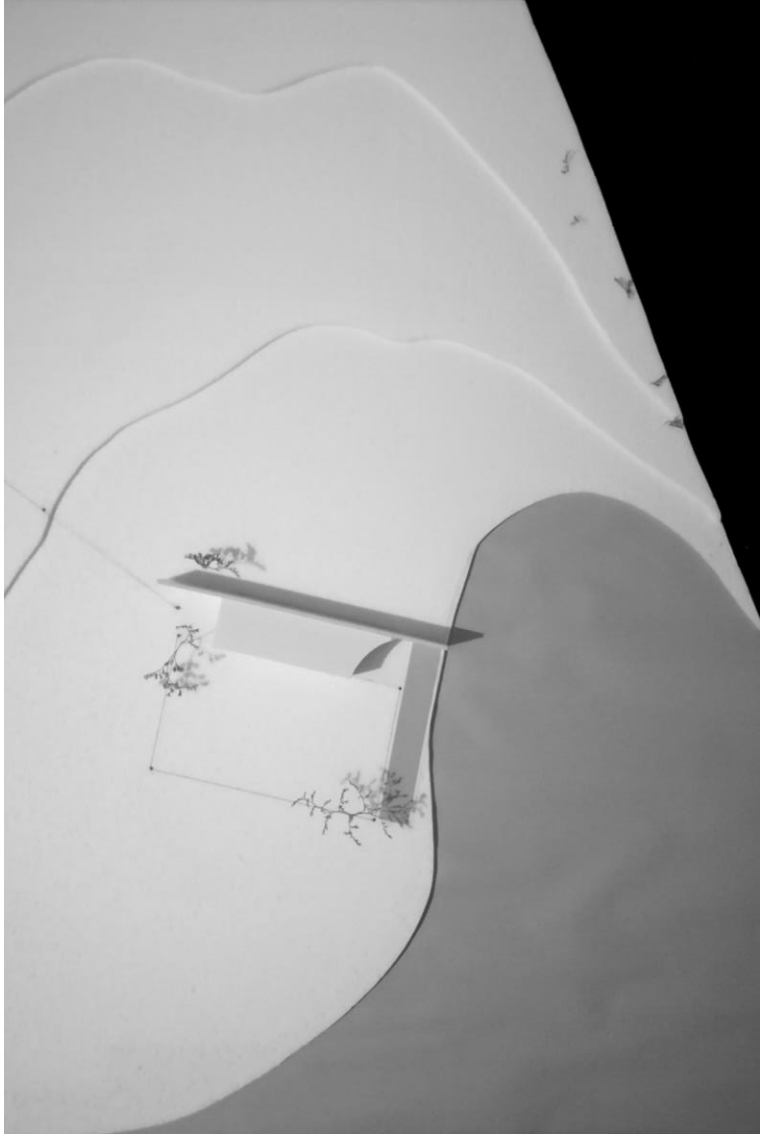


Pavilhão

contexto



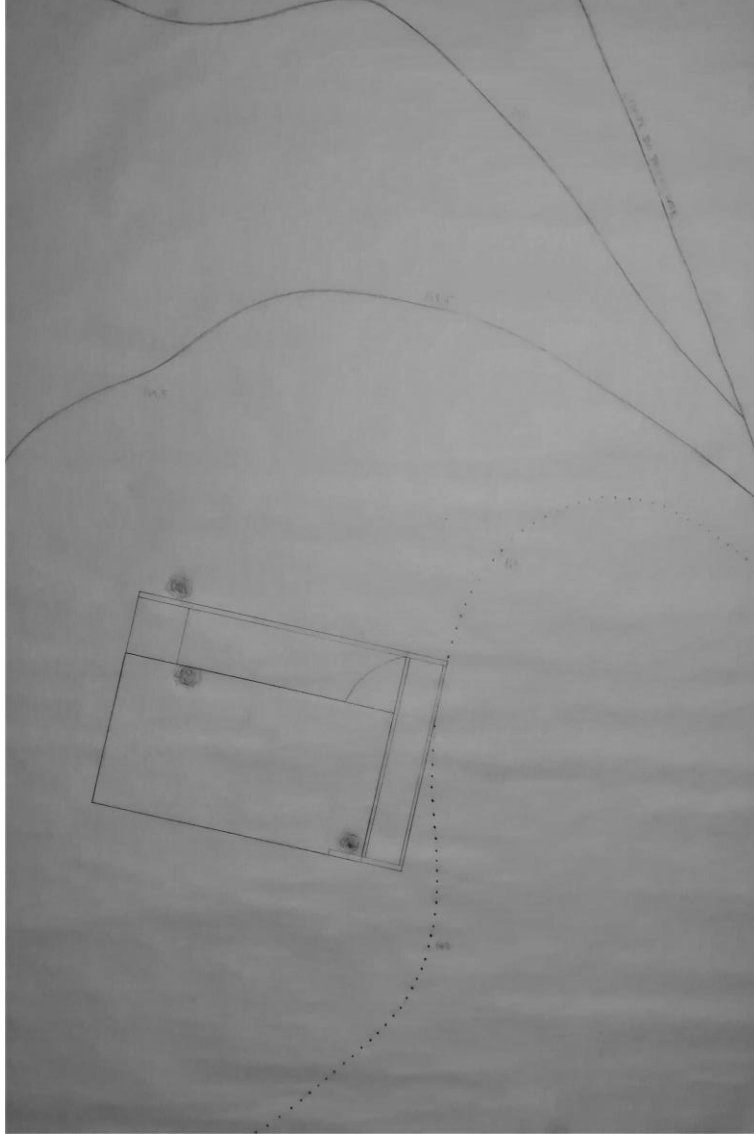






planta e perfil de enquadramento territorial



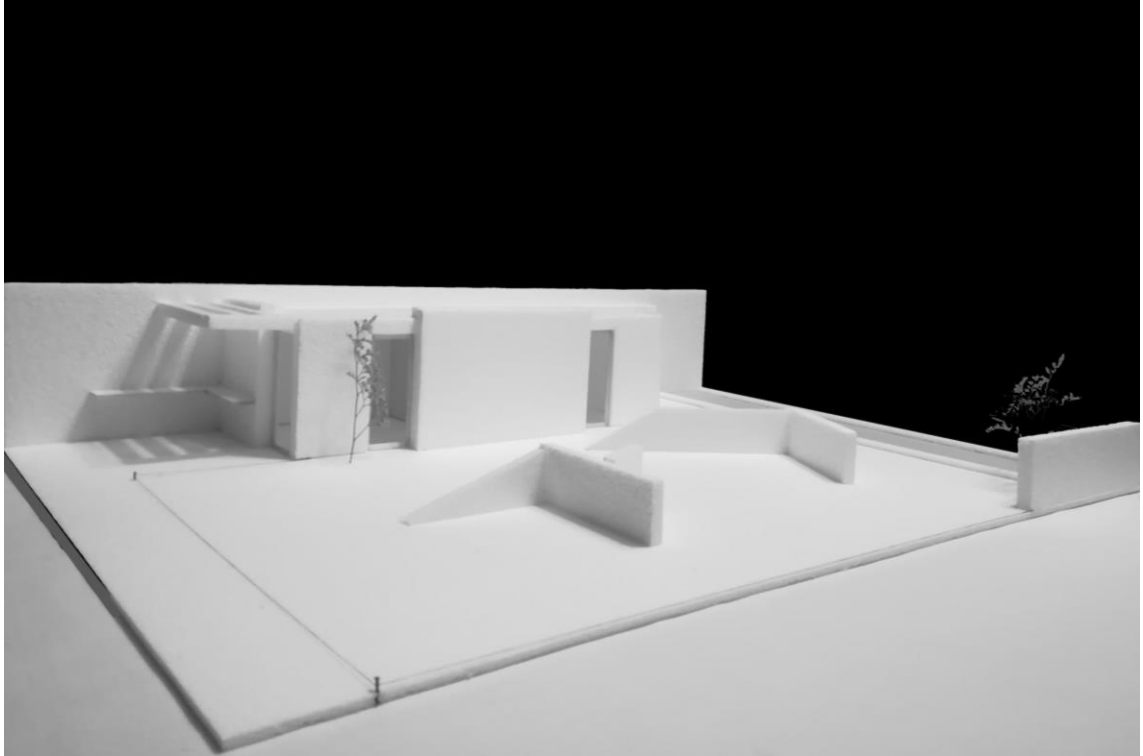


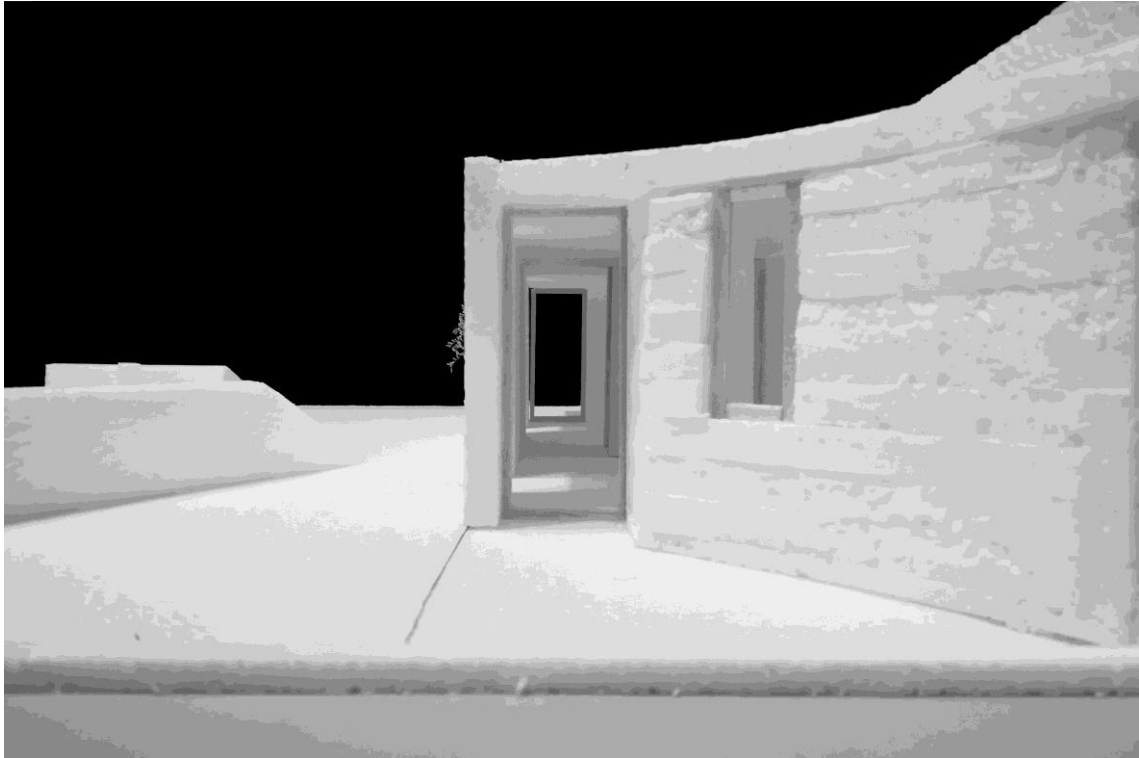
planta e perfil de enquadramento territorial

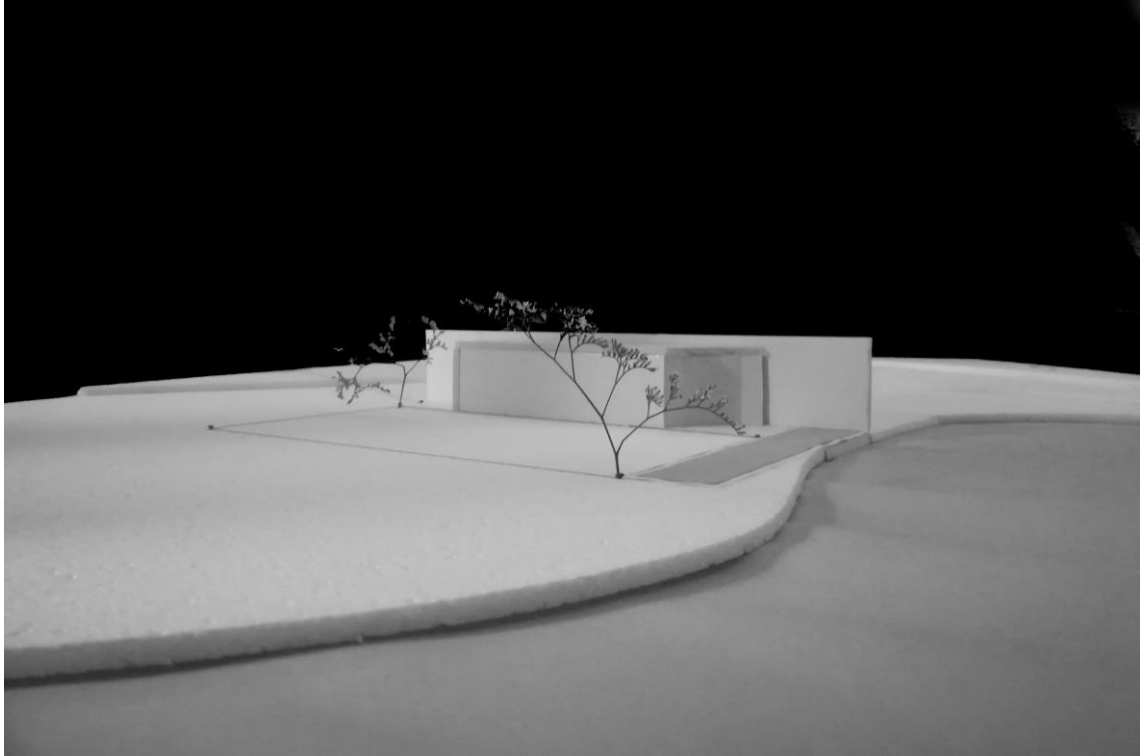


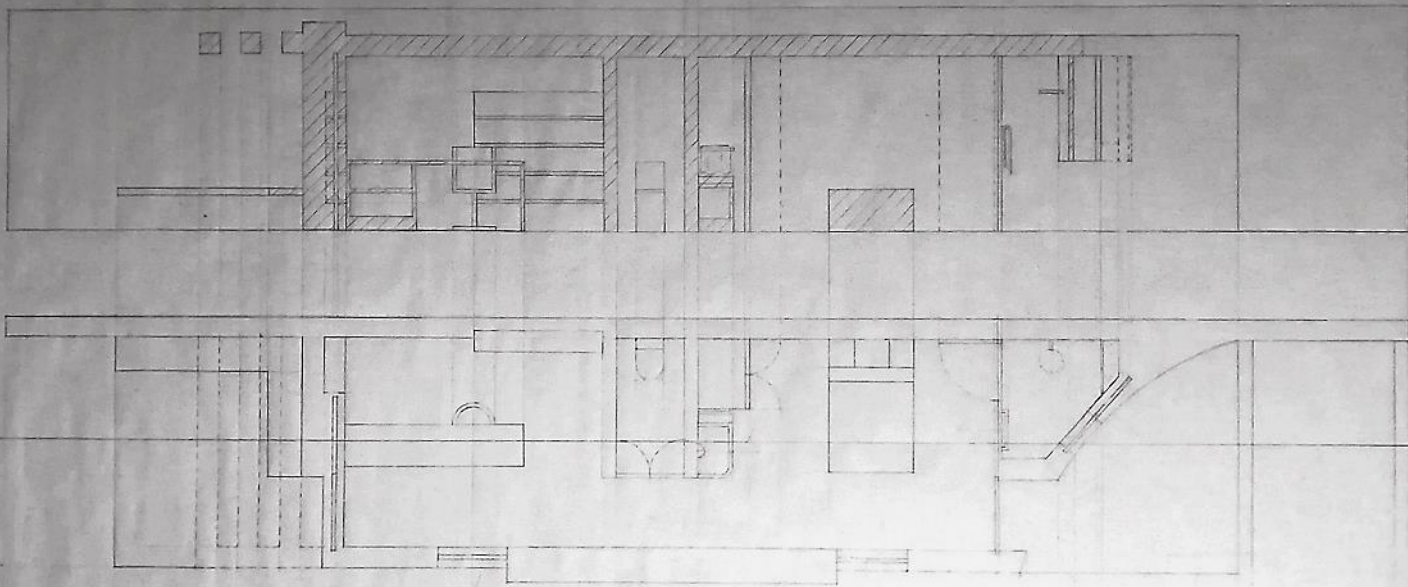
objecto





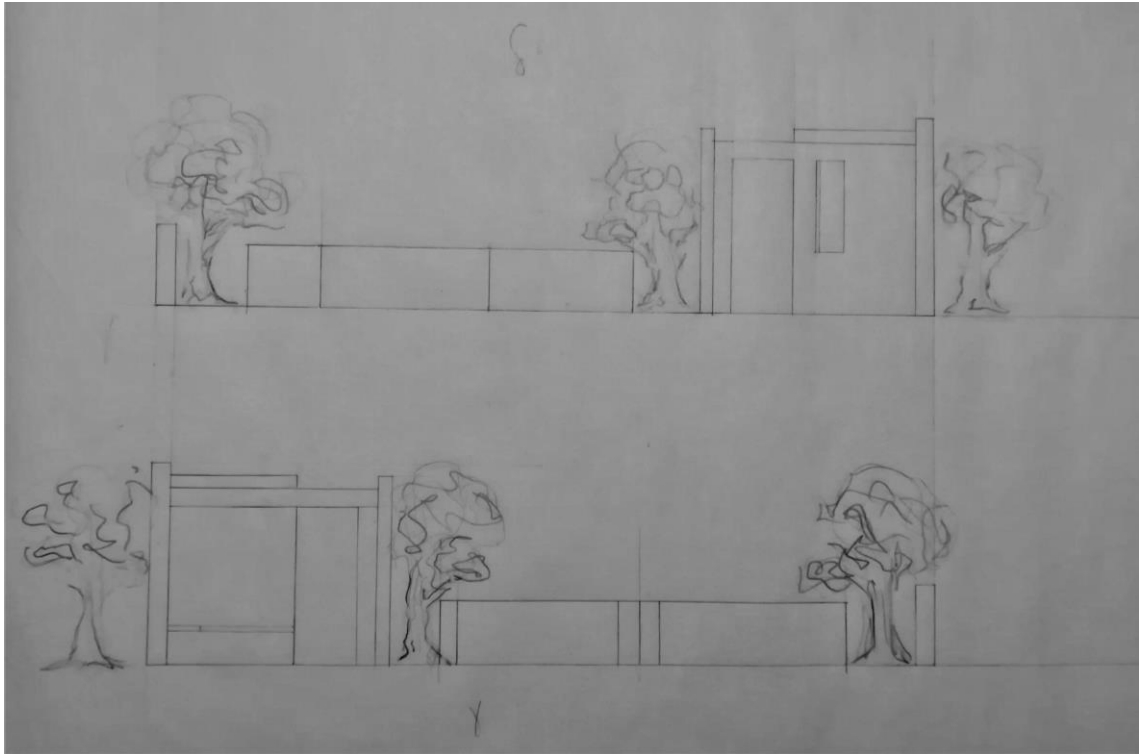






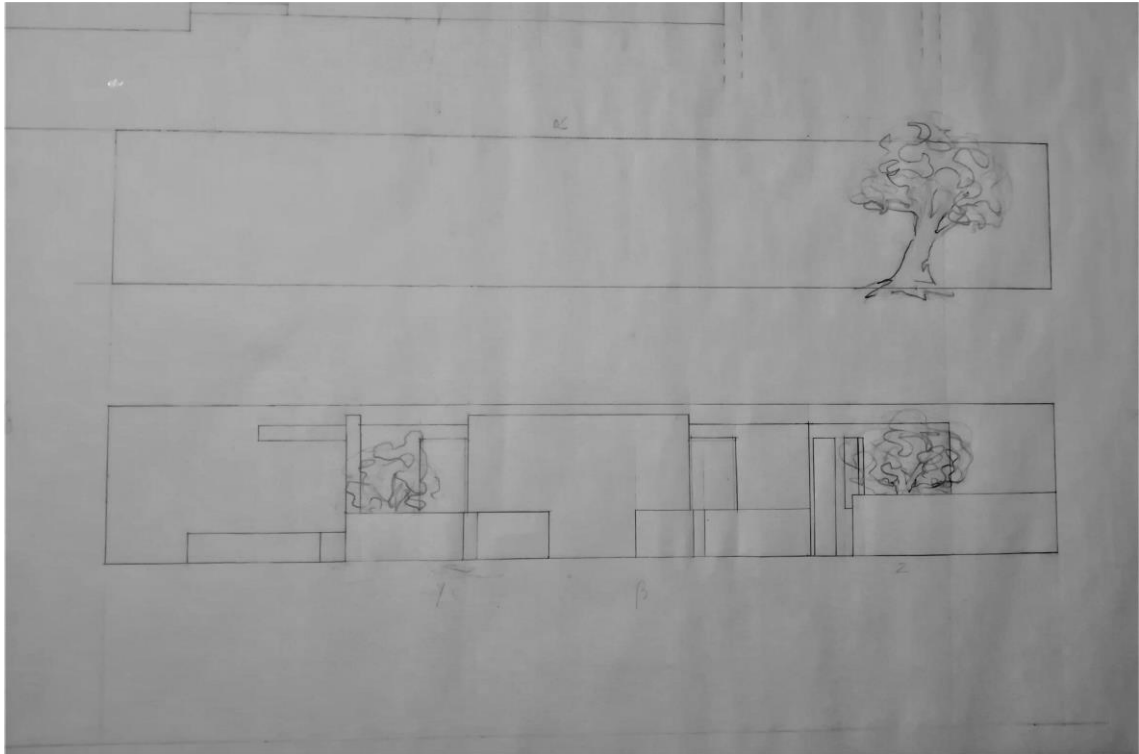
planta(s) e corte e alçado





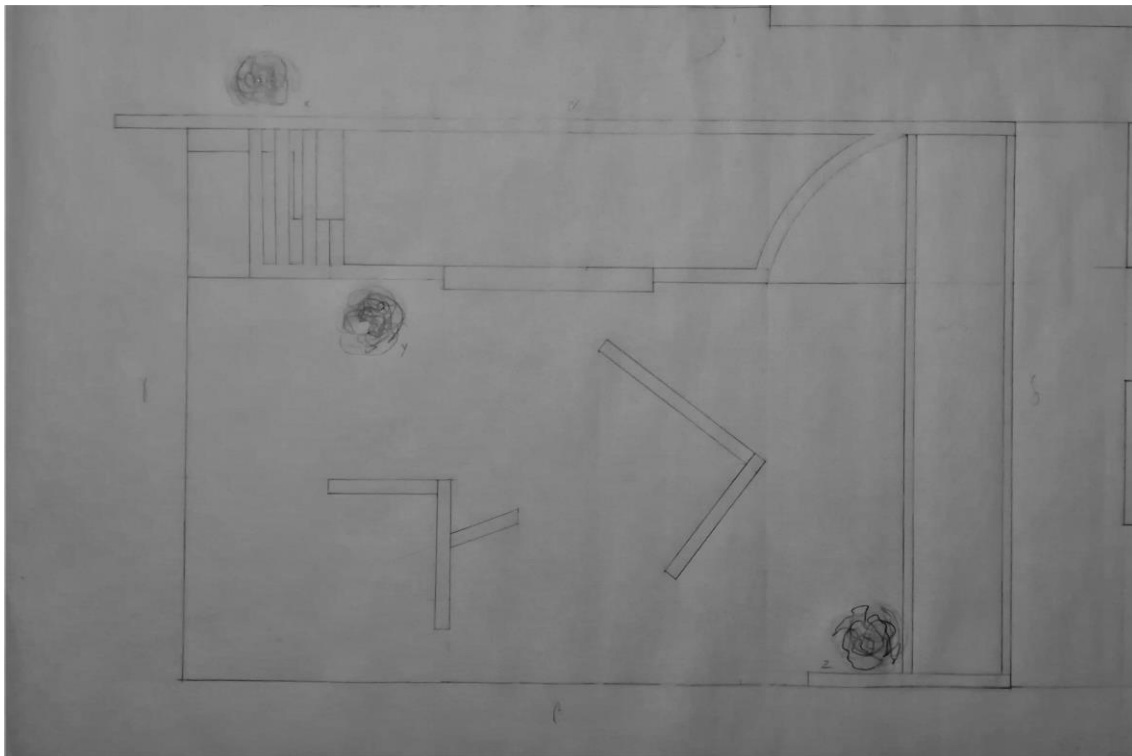
planta(s) e corte e alçado





planta(s) e corte e alçado

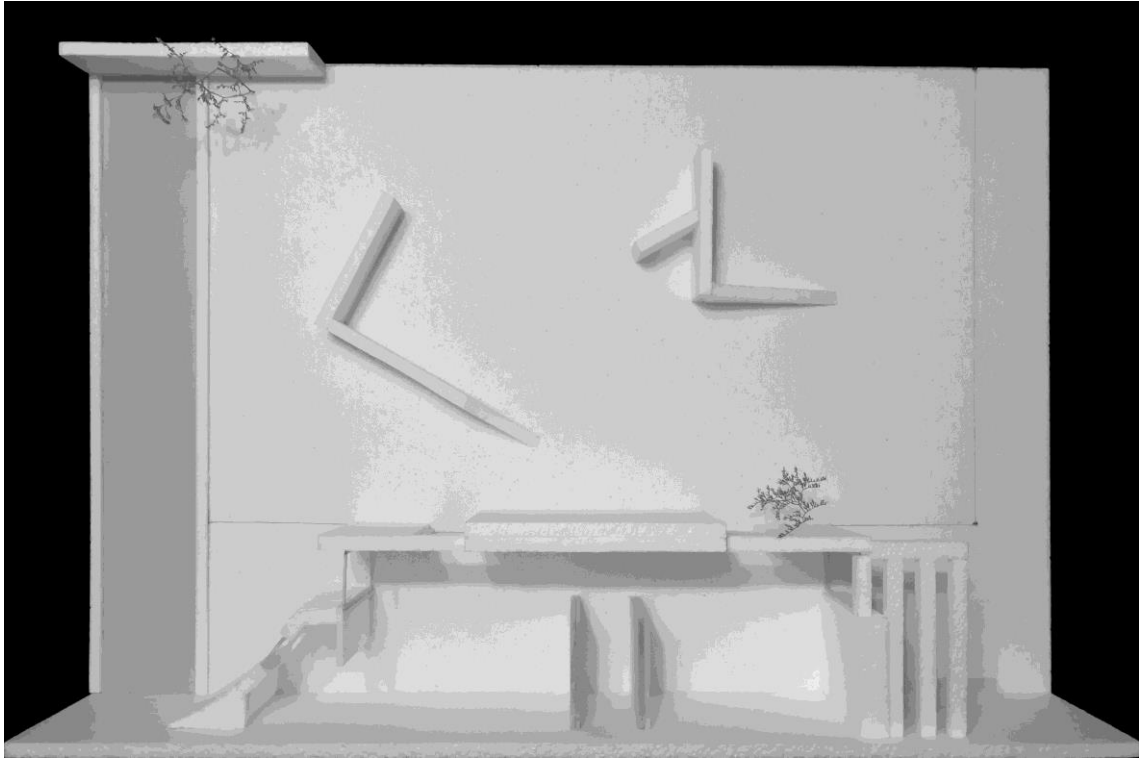


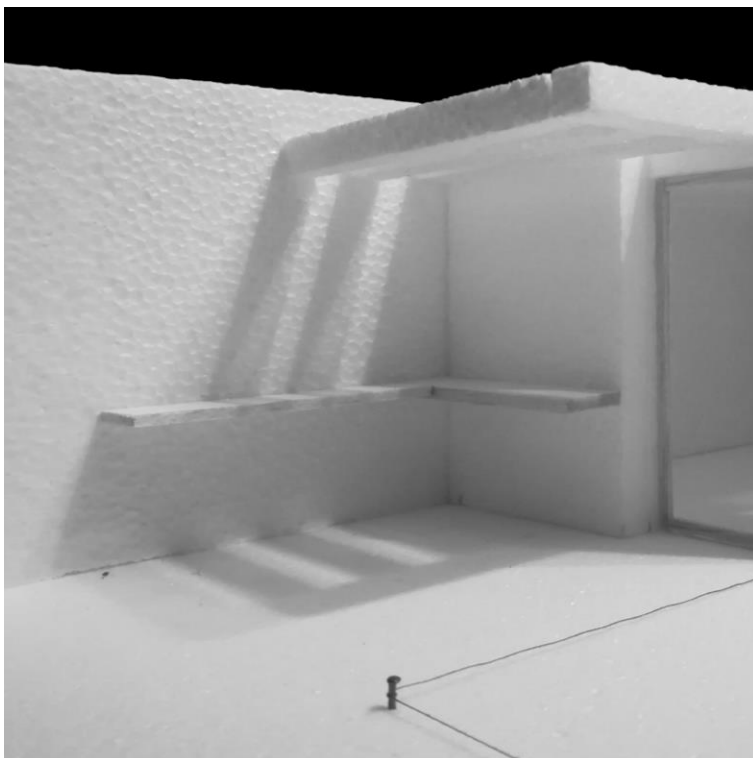


planta(s) e corte e alçado

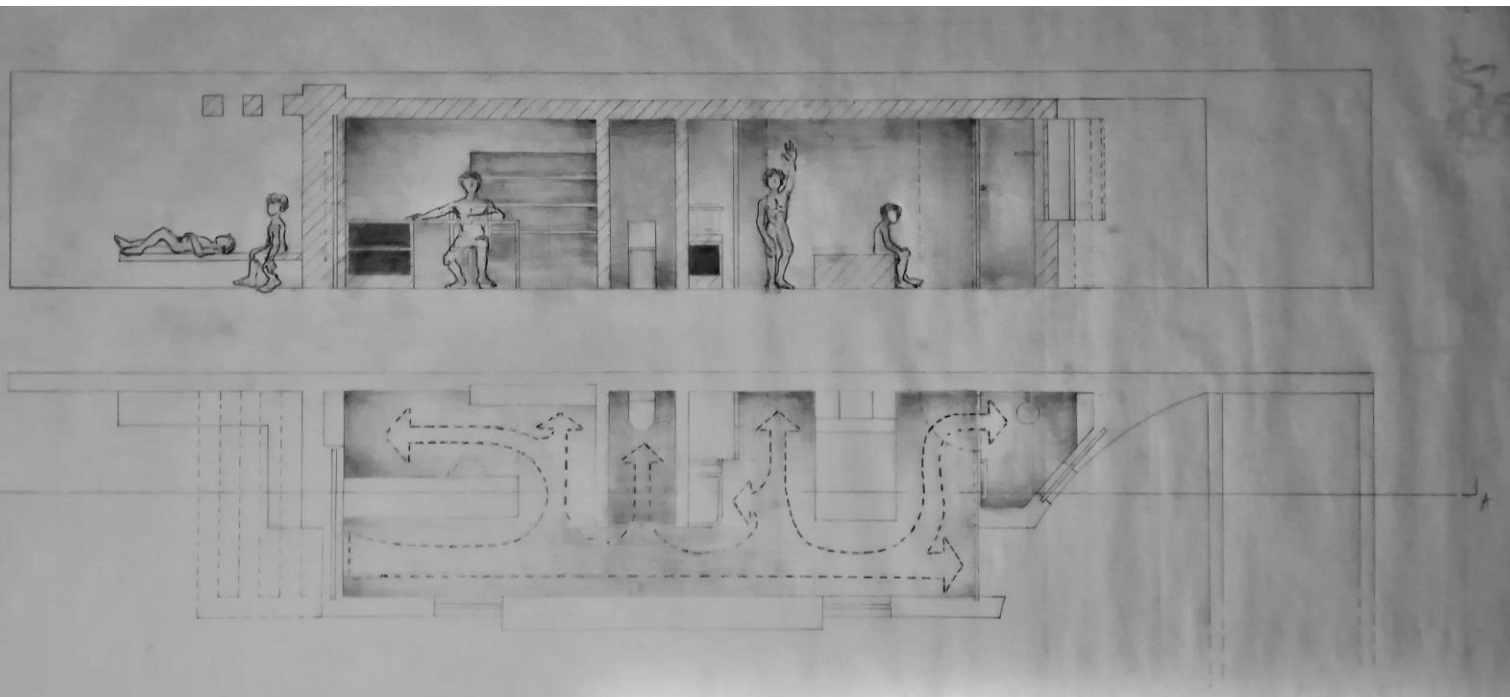


espaço





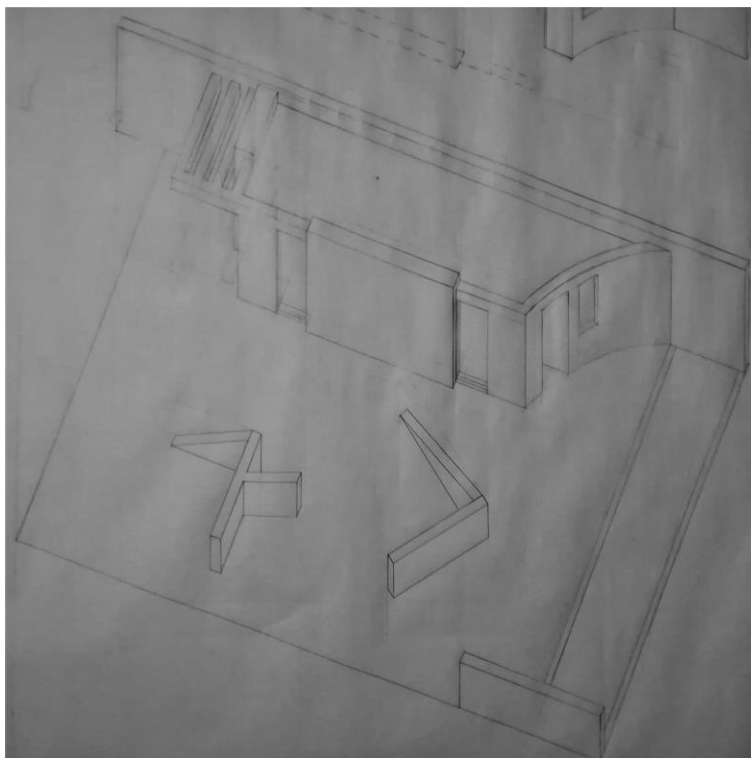




planta(s) e corte e alçado

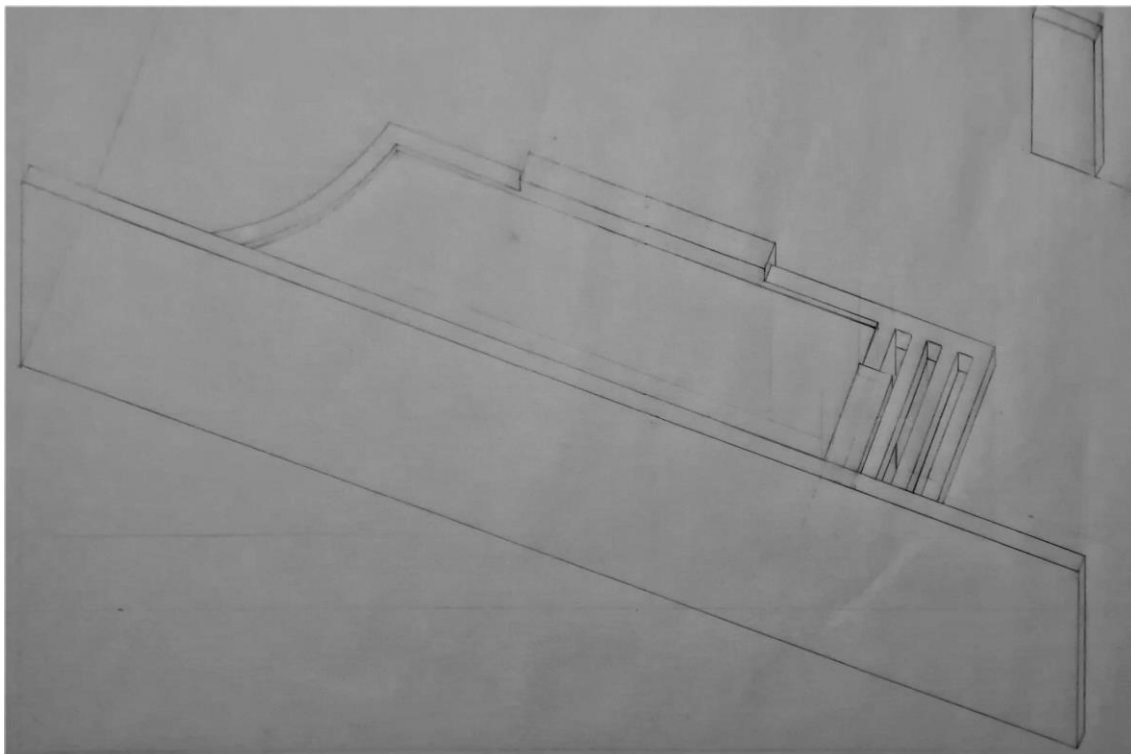


Análise



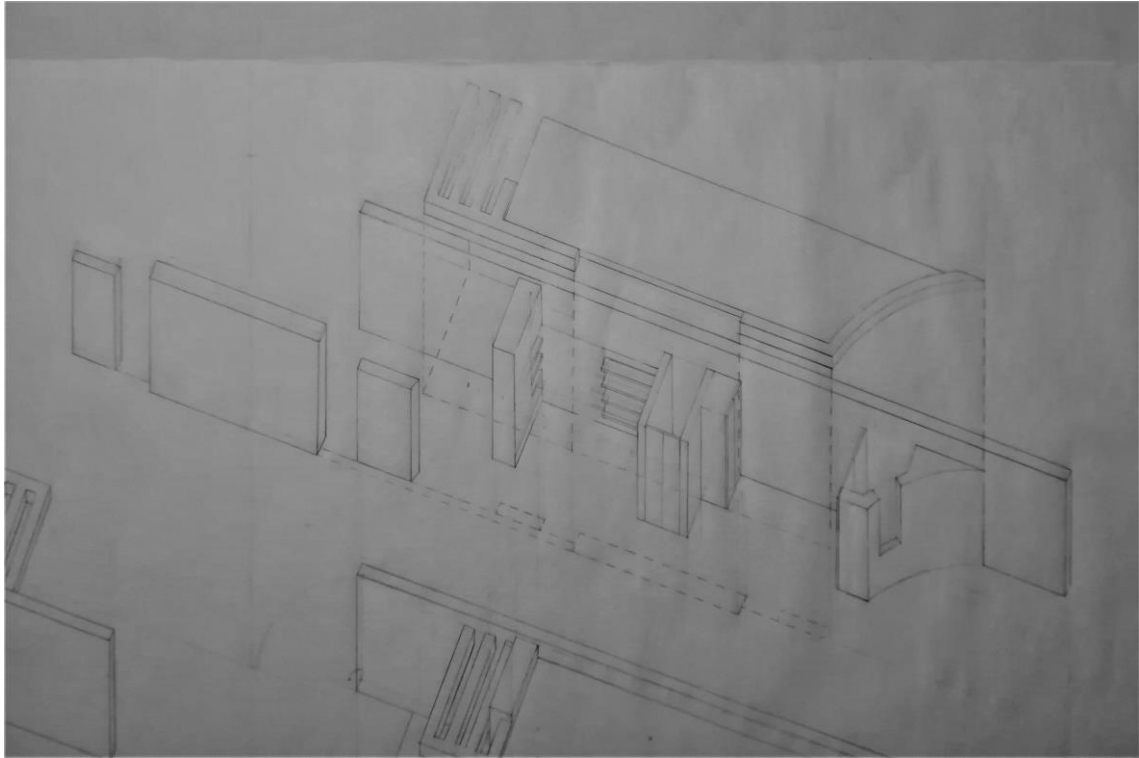
organização geométrica e composição formal





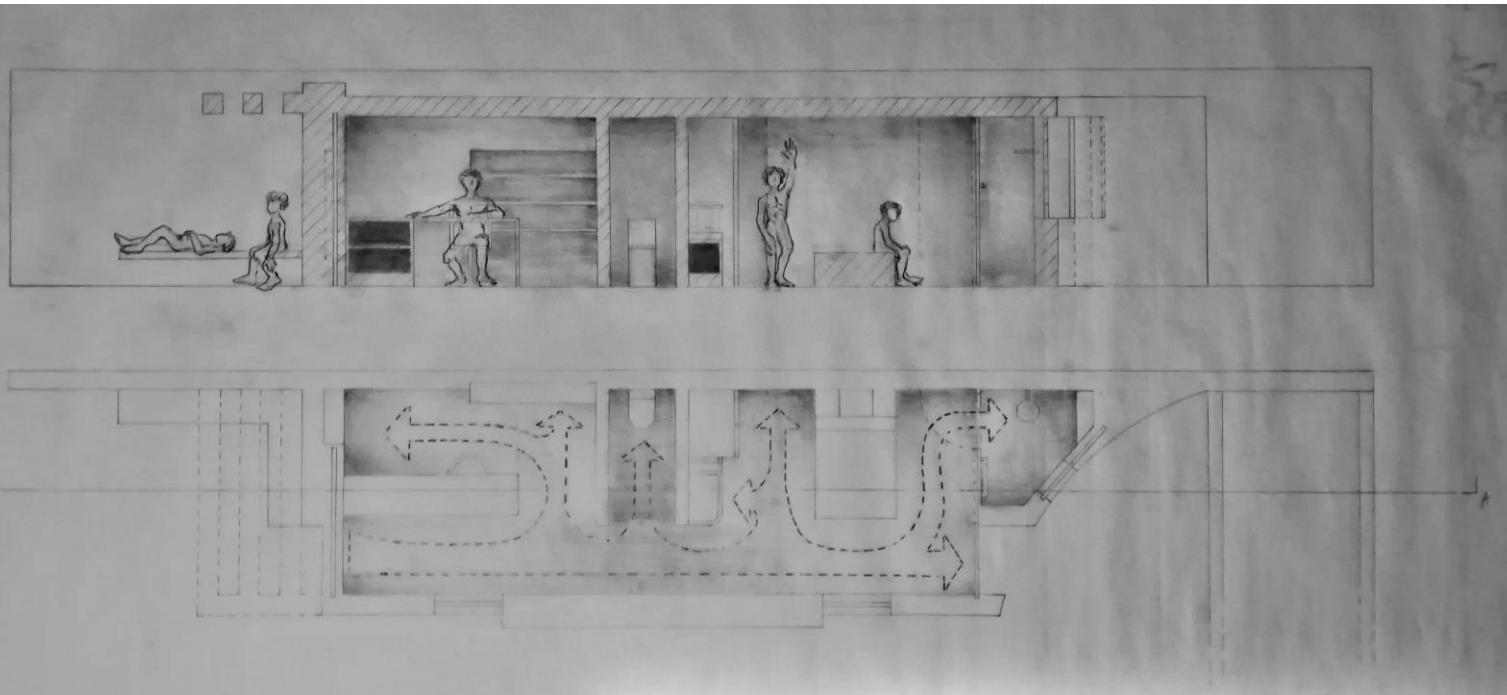
organização geométrica e composição formal





organização geométrica e composição formal





luz

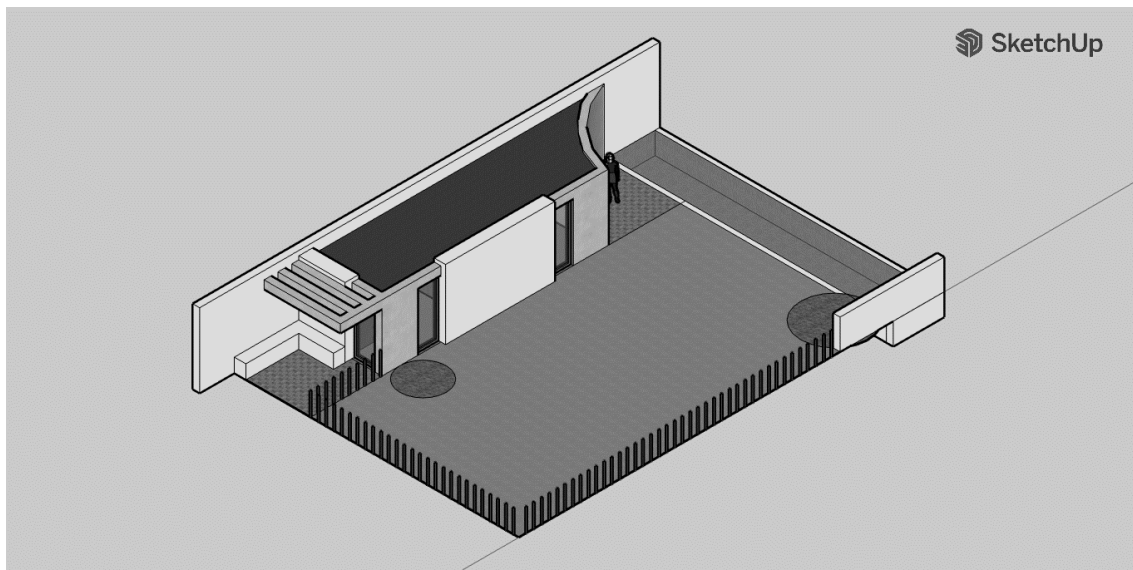


Narrativa descriptiva

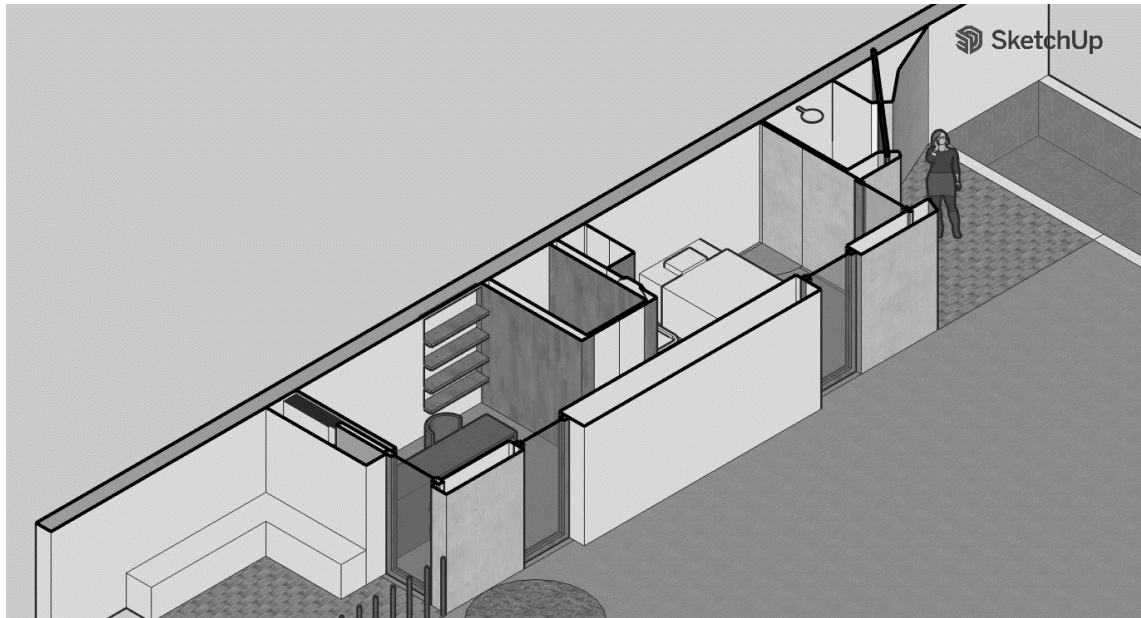
Este local de recolhimento, situado perto das águas do Alqueva, compromete-se a envolver, e a dar uma nova apreciação à ruína no terreno da casa de Monsaraz.

Vista a partir da casa, nada se vê para além de um muro, uma tela branca ao comprido que, por vezes, toca na água do lago da barragem quando esta estiver cheia. Cabe ao observador de se deslocar, e procurar ver o que estará para lá desse muro. Quando chegar, verá a ruína e o seu espaço para reflexão.

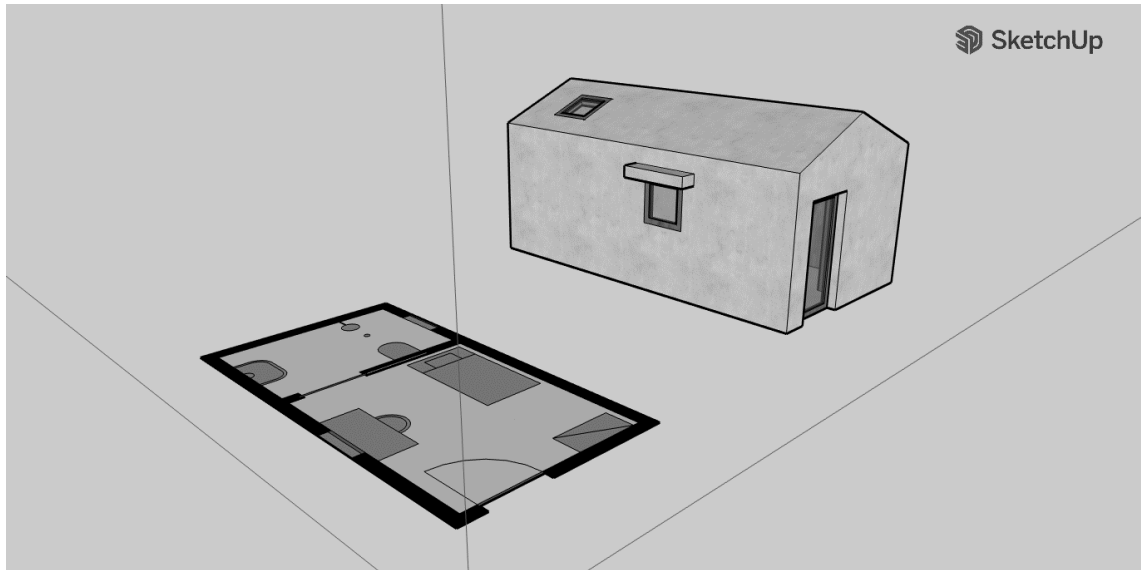
Processo



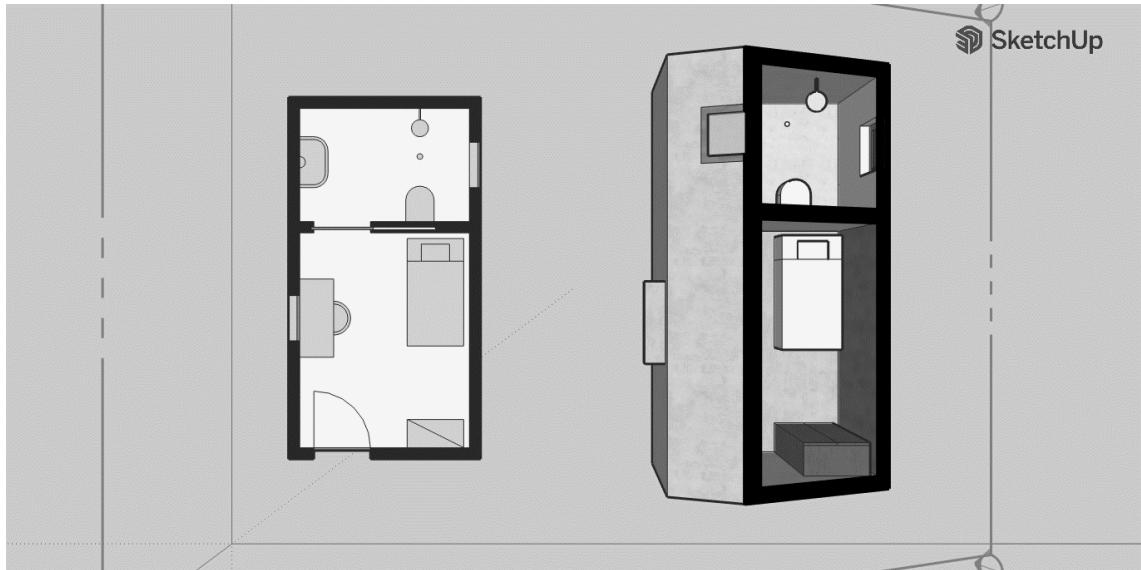
Modelo 3D do objeto a apresentar



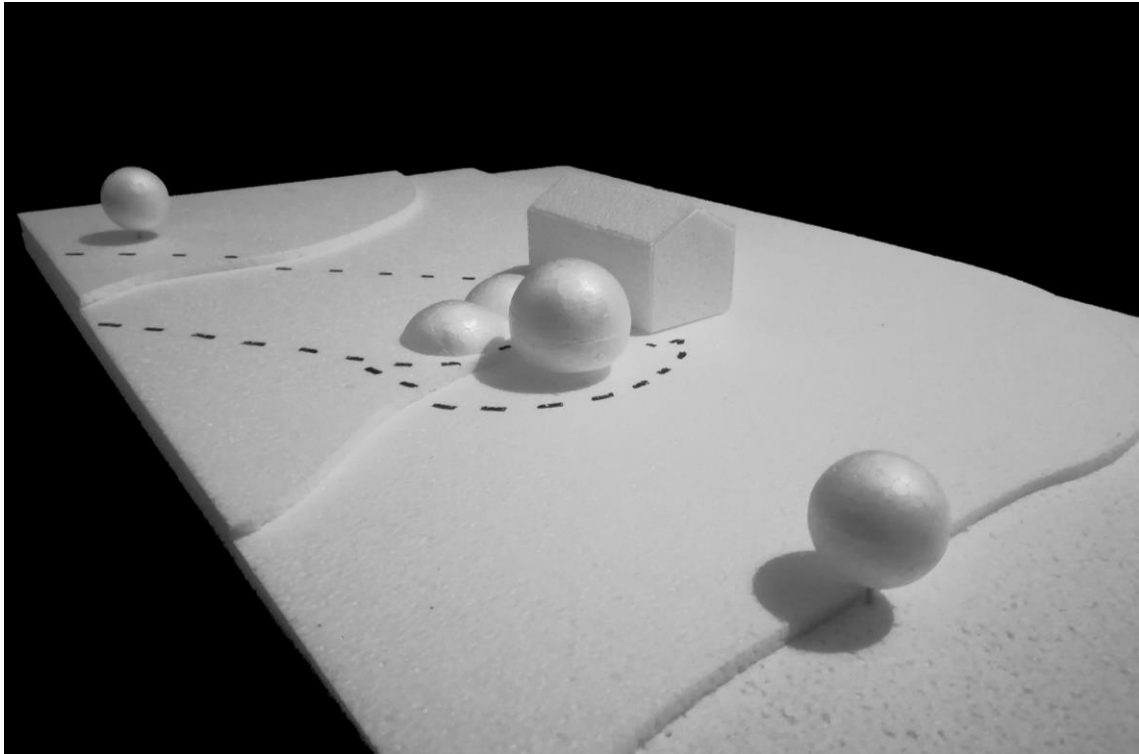
Modelo 3D do objeto a apresentar



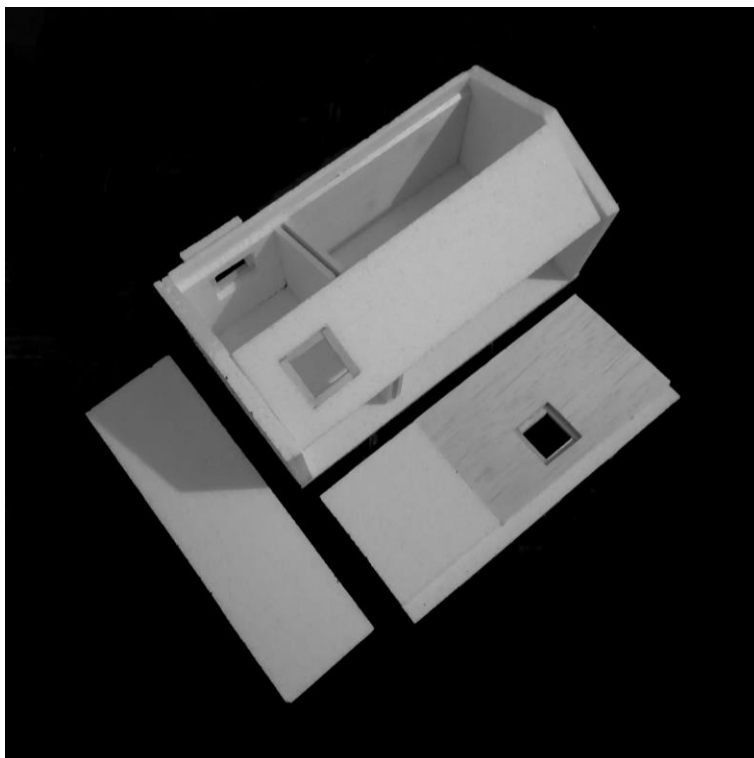
Modelo 3D do objeto a apresentar



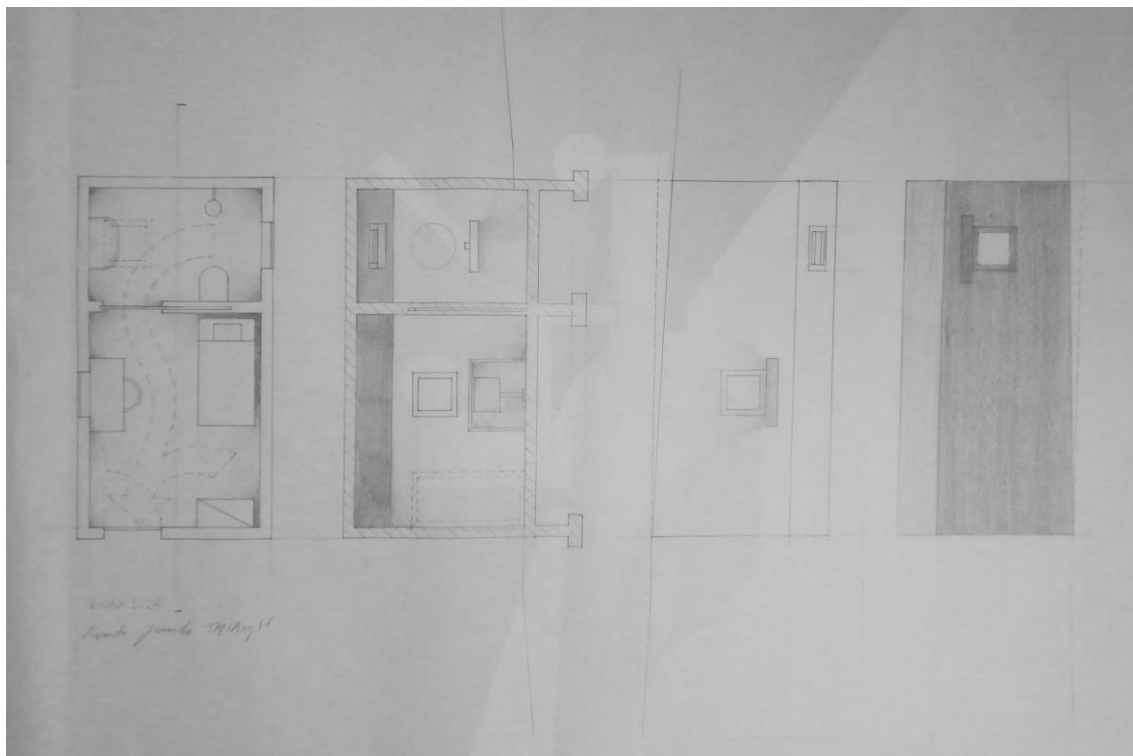
Modelo 3D do objeto a representar



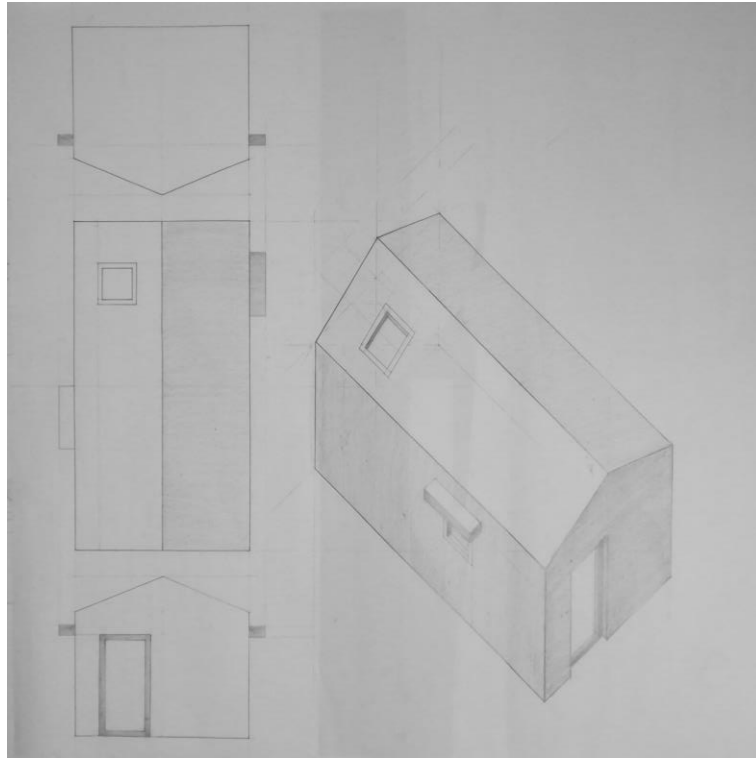
Maquete de Implantação, Escala 1:75



Maquete, Escala 1:25



Planta, Alçados e Cortes, Escala 1:25



Alçados e Axonometria, Escala 1:25

Casas | fase 1

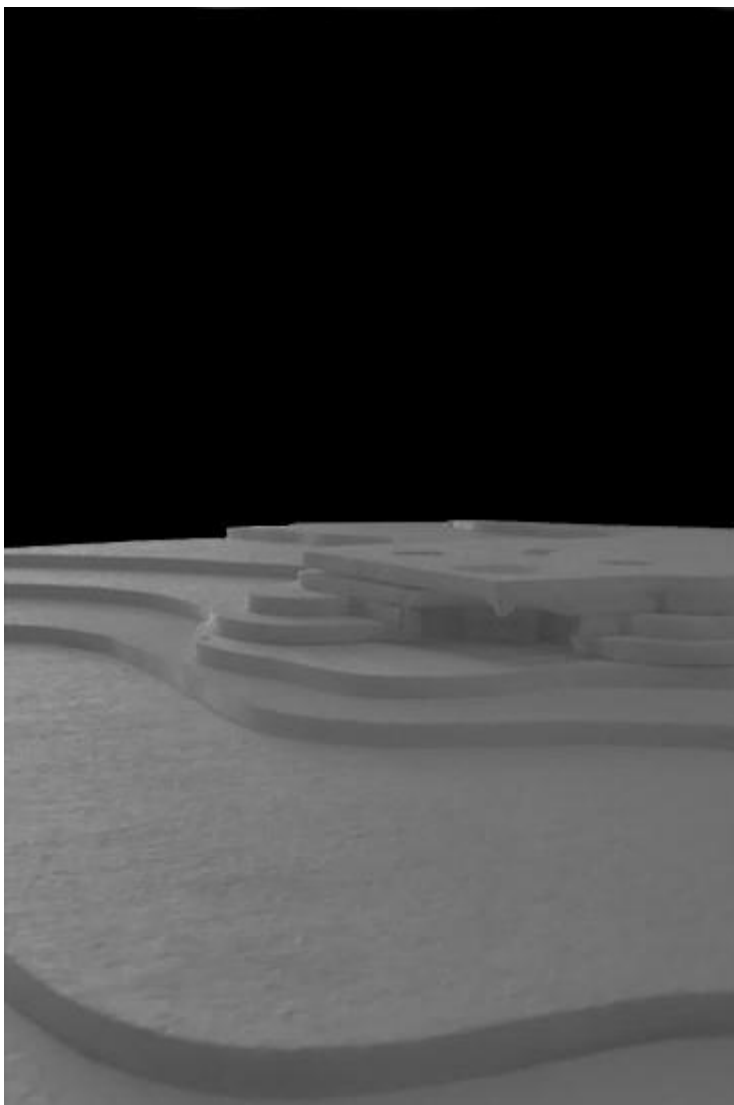
Caso de estudo . autor

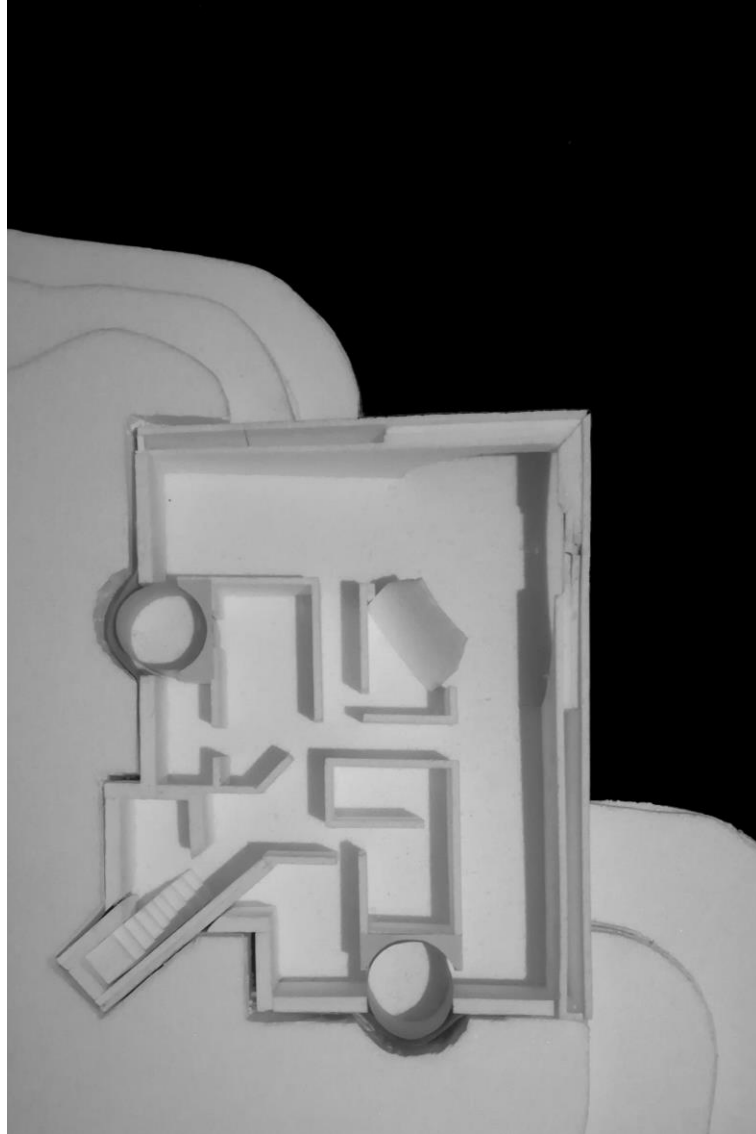
“Utilizando a topografia, desenha-se uma calote que estende as áreas sociais, tornando-se o centro da vida na casa. Moldando a luz neste espaço, uma outra calote simétrica intersecta esta, criando um abertura que ilumina este centro com desenho e limites rigorosos.”

Aires Mateus

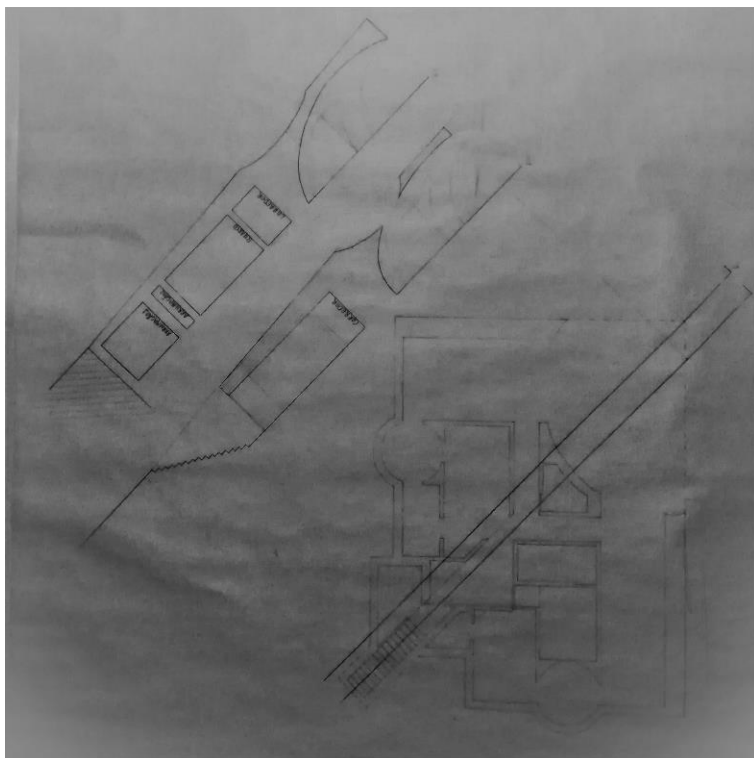


Maquetes

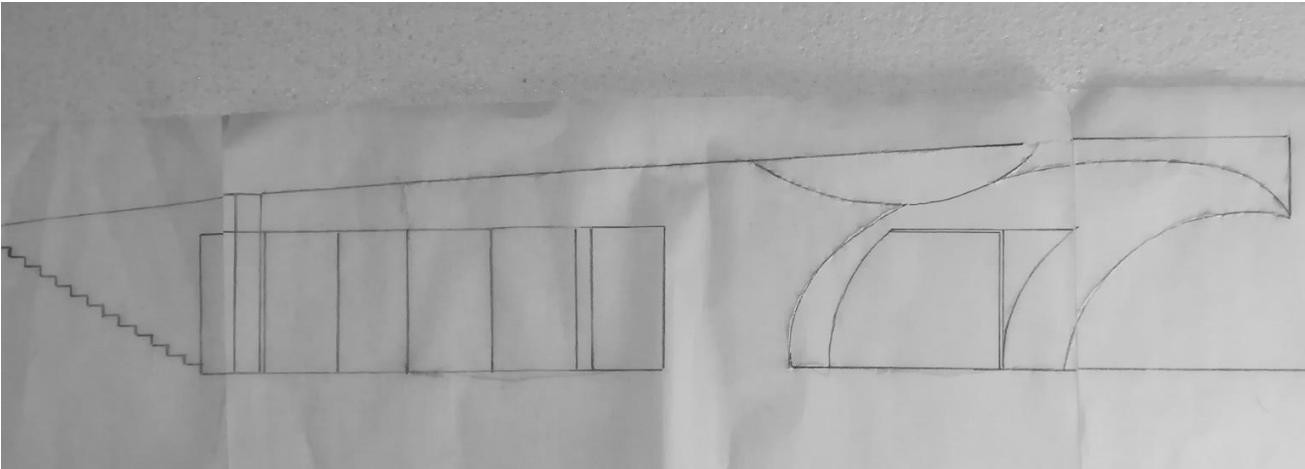
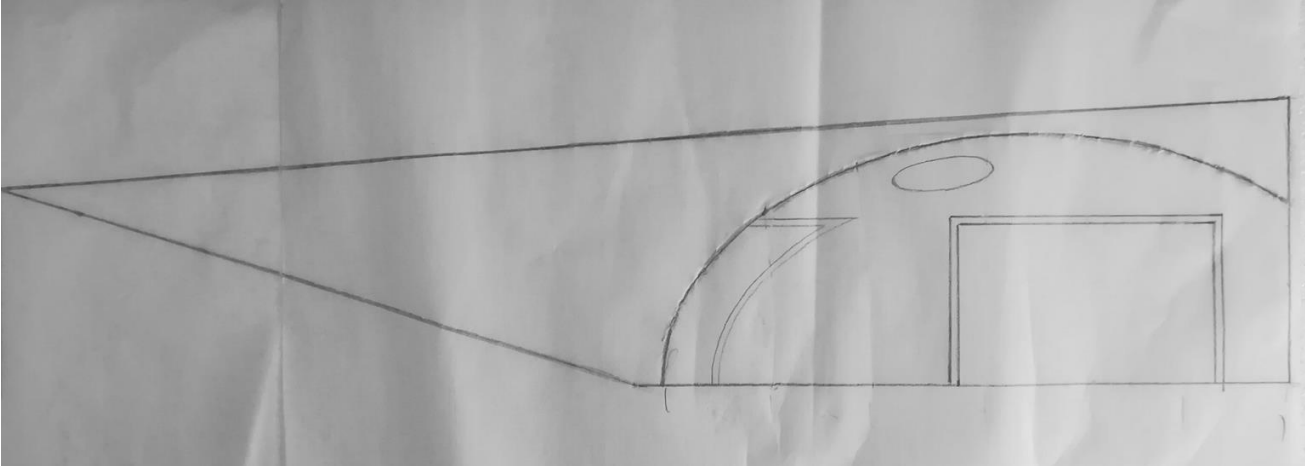


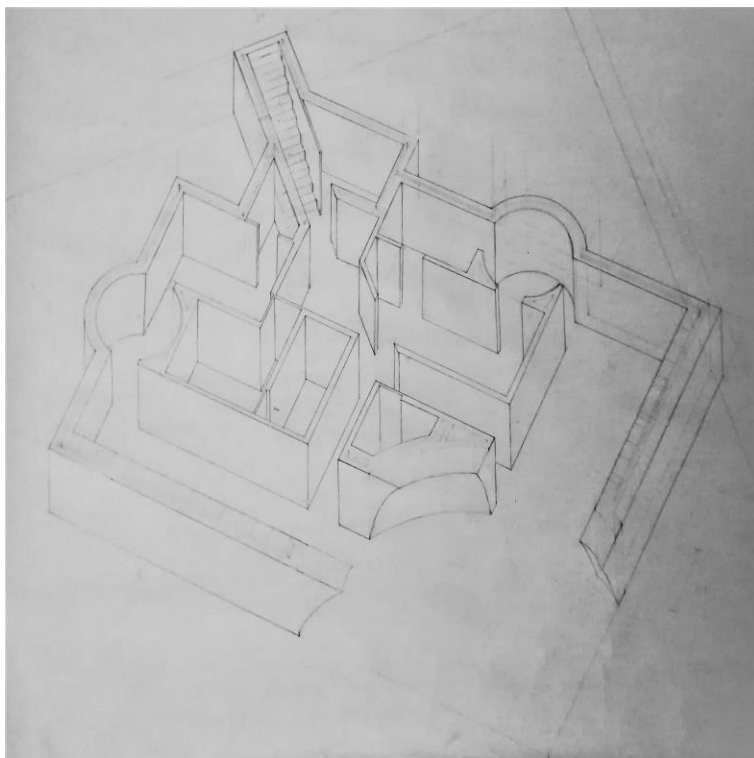


Desenhos de representação

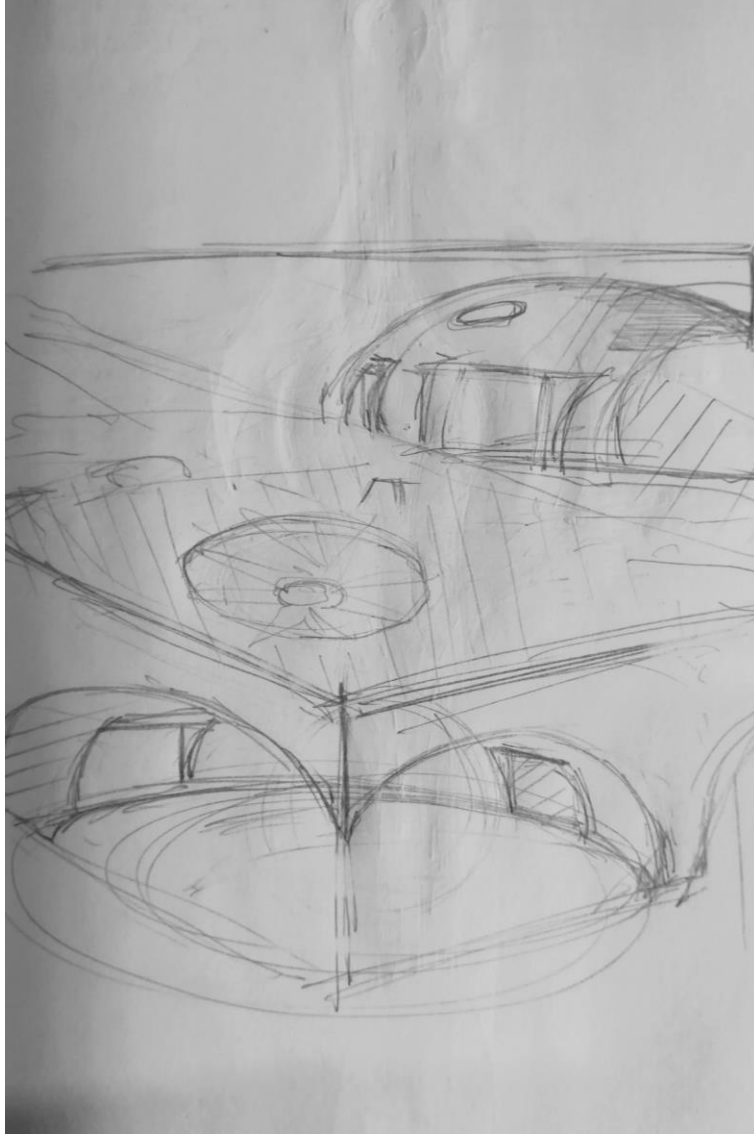


planta e secção articuladas



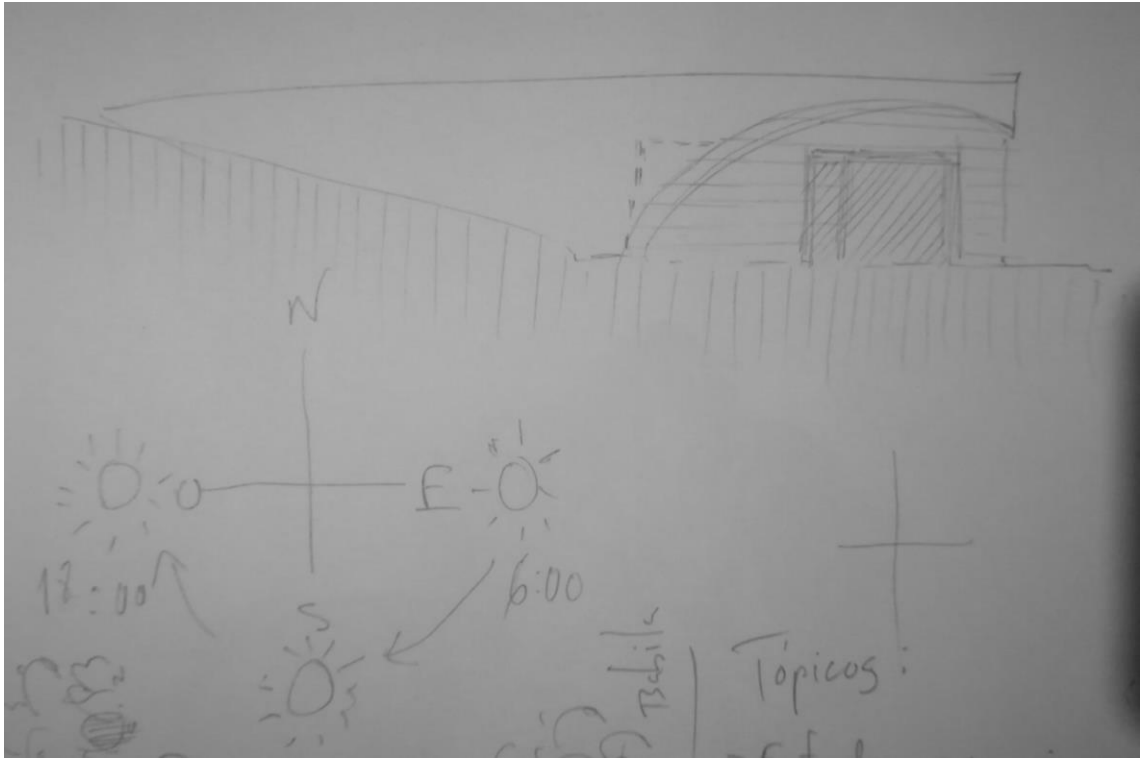


axonometria geral



esquiço sintese

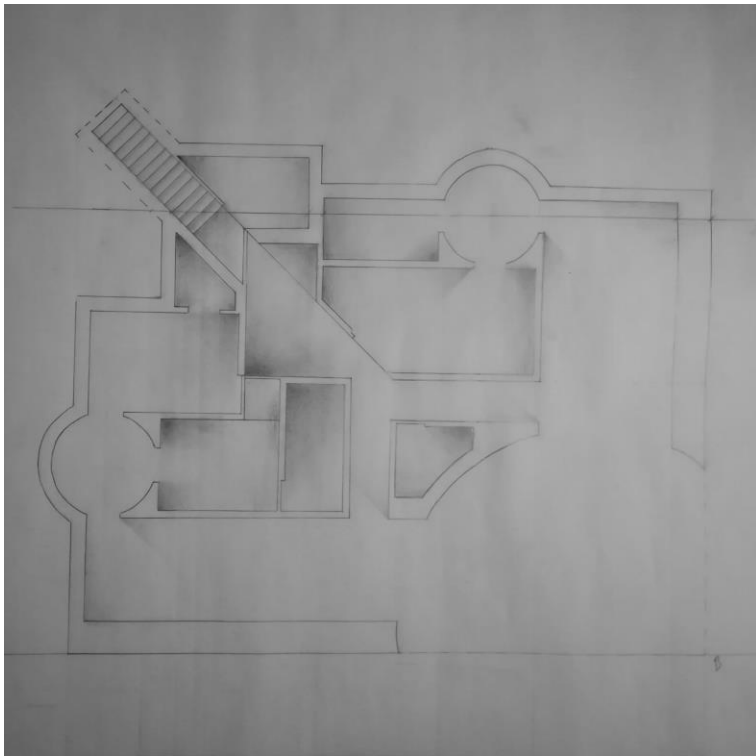
Processo



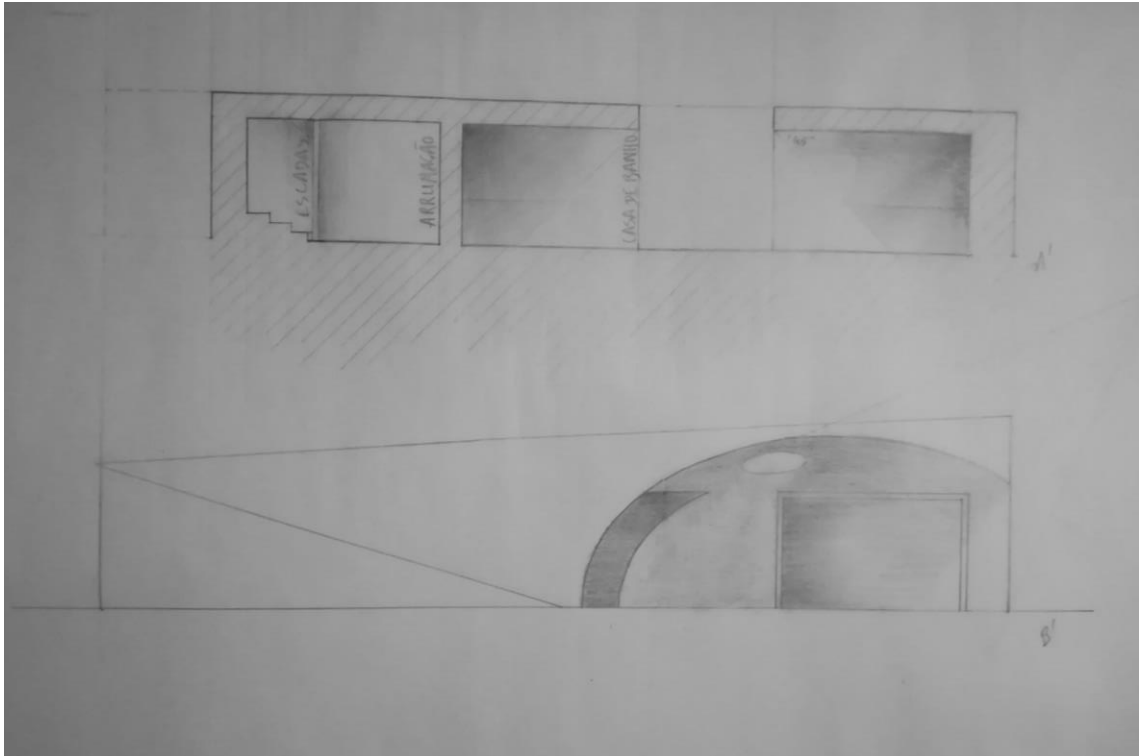
Casas | fase 2

Caso de estudo . autor

reflexão interpretativa

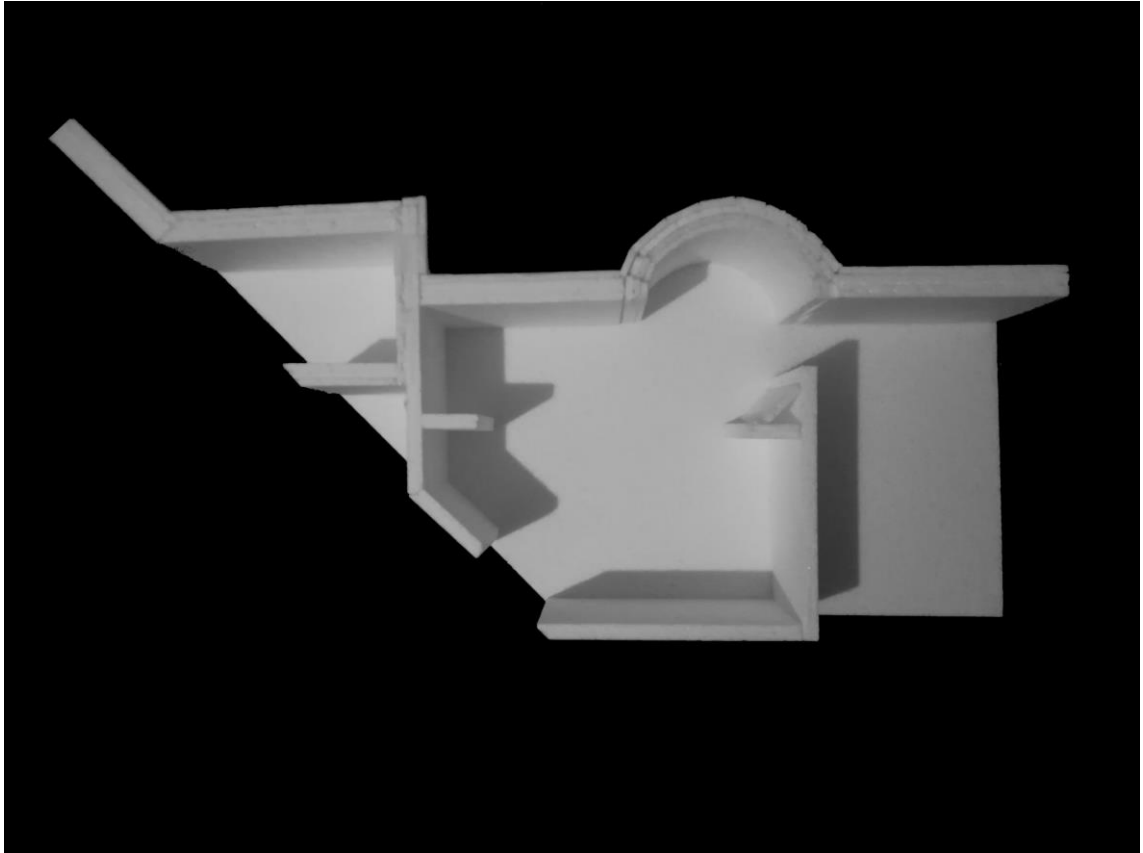


luz



luz

maquetes





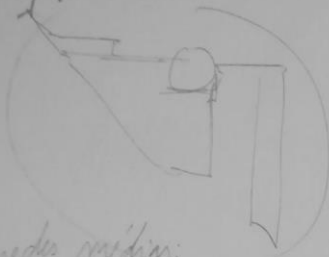


Processo

Medidas:

Chão: 0,5

paredes grossas
traço (azul) 4cm

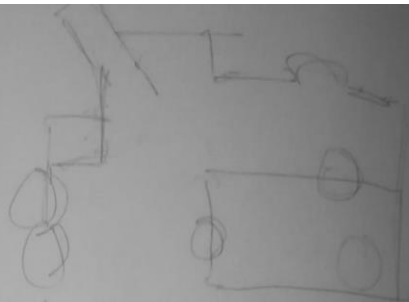


paredes médias:
2cm

paredes finas:
1cm

~~parede externa - 2cm~~

parte
para
as
fôrças



Três fotografias



Espaço



Regionalismo



Ritmo