

Laboratório de Arquitectura II

2º semestre

José Outeiro

ÍNDICE

Sítio

Fotografias da maquete 1:1000

Desenho de análise do lugar

Fotografias da maquete proposta 1:1000

2ª Fase

Lado Poente

Proposta

Imagem de referência

Citação – Síntese da proposta

Esquiço de síntese

Fotografias da maquete 1:200

Plantas e perfis 1:200

Fotografia da maquete espaço relevante 1:50 (facultativo)

Desenho(s) complementar(es) / visão serial

Fotografias das maquetes de trabalho (várias escalas)

1ª Fase

Lado Nascente

Proposta

Imagem de referência

Citação – Síntese da proposta

Esquiço de síntese

Fotografias da maquete 1:200

Planta e perfil de conjunto

Fotografias da maquete 1:50 / 1:20 / ...

Planta e corte 1:50

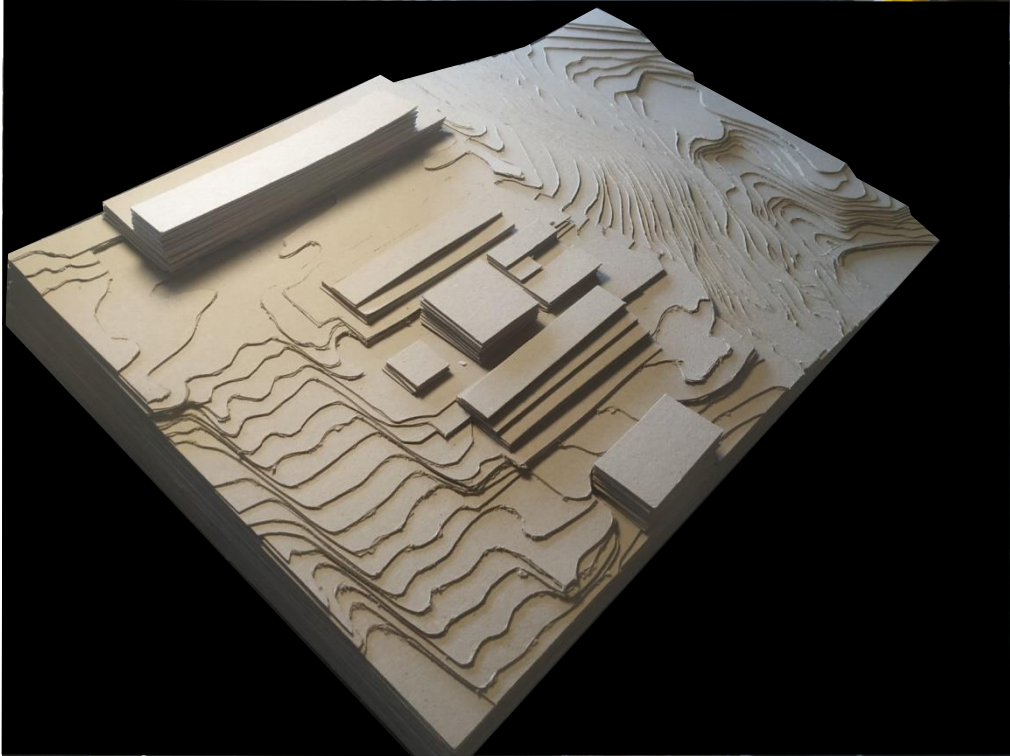
Desenho(s) complementar(es) / visão serial

Processo

Desenhos exploratórios mais relevantes

Leituras comentadas

Sítio

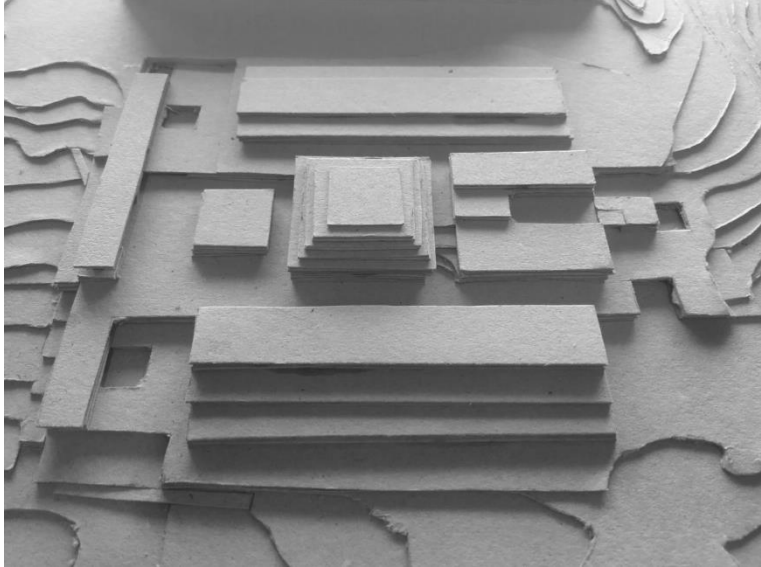


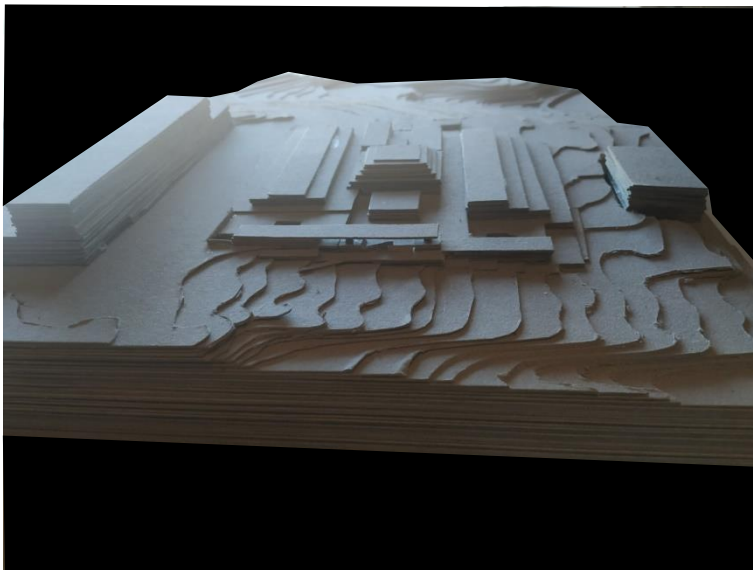


desenho de análise do lugar









2ª fase

lado poente

Proposta



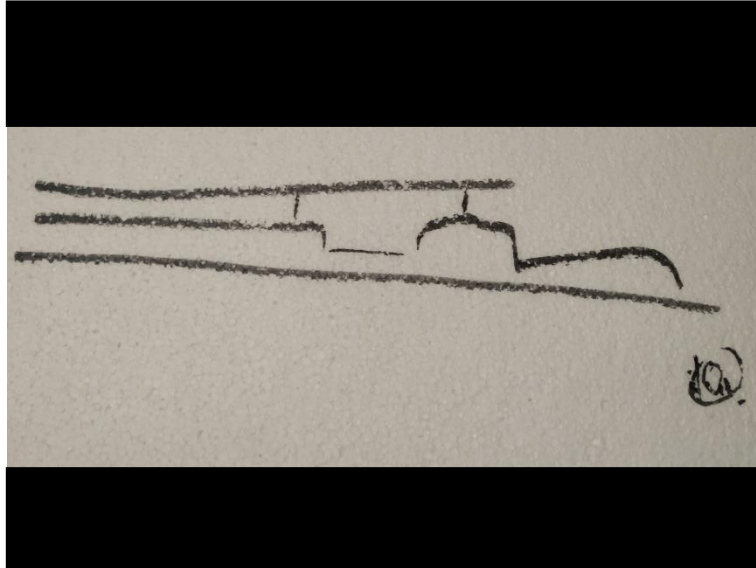
Centro de Arte em Sines, Aires Mateus



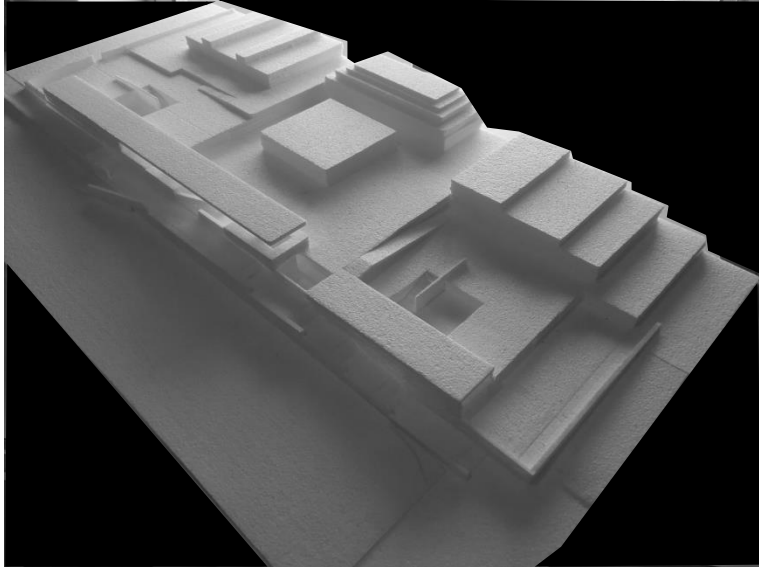
Centro de Arte em Sines, Aires Mateus

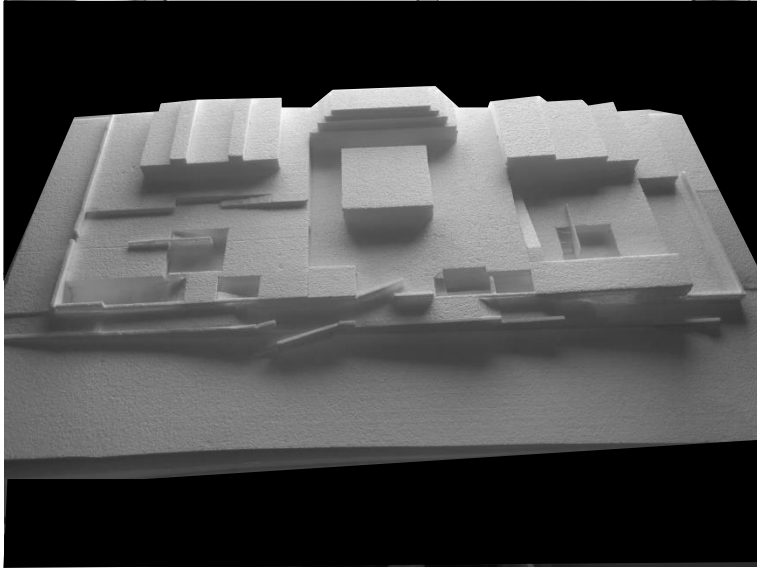
“A arte não é sobre si mesma, mas a atenção que trazemos para ela. “

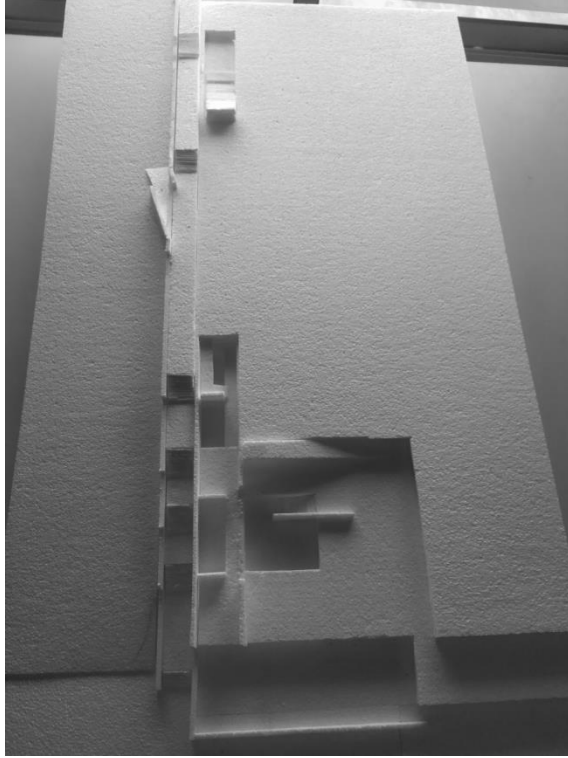
MARCEL DUCHAMP

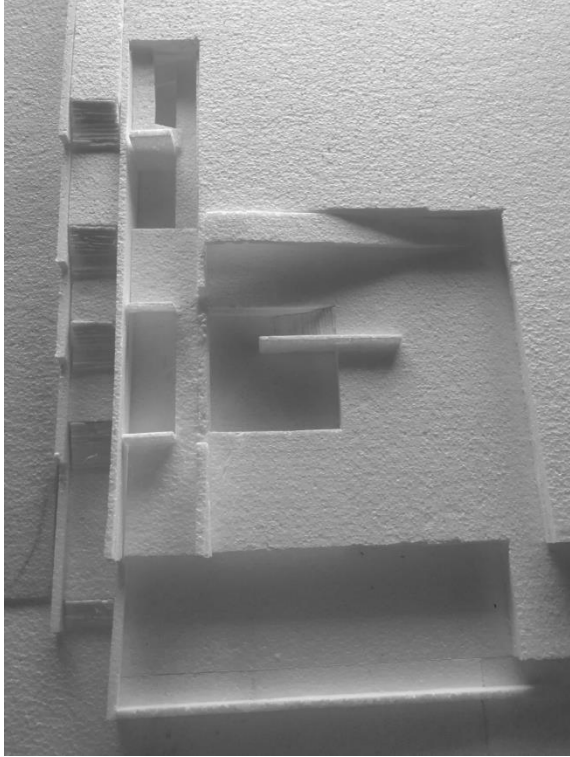


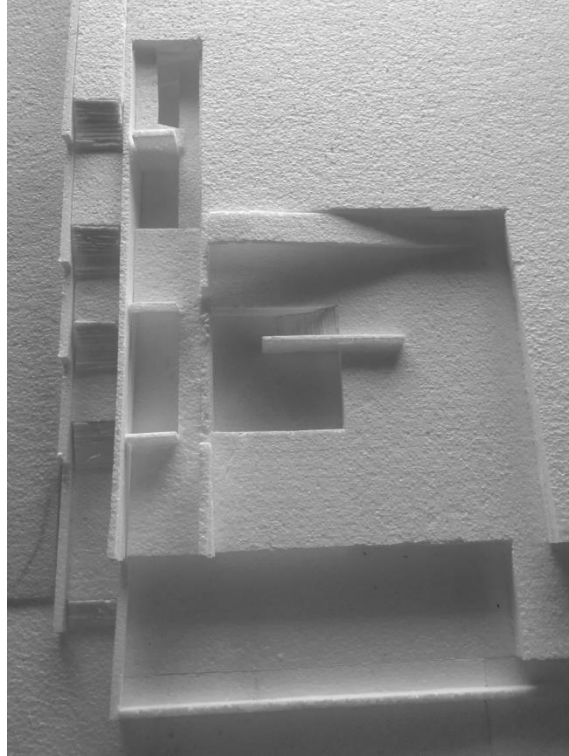
esquiço síntese

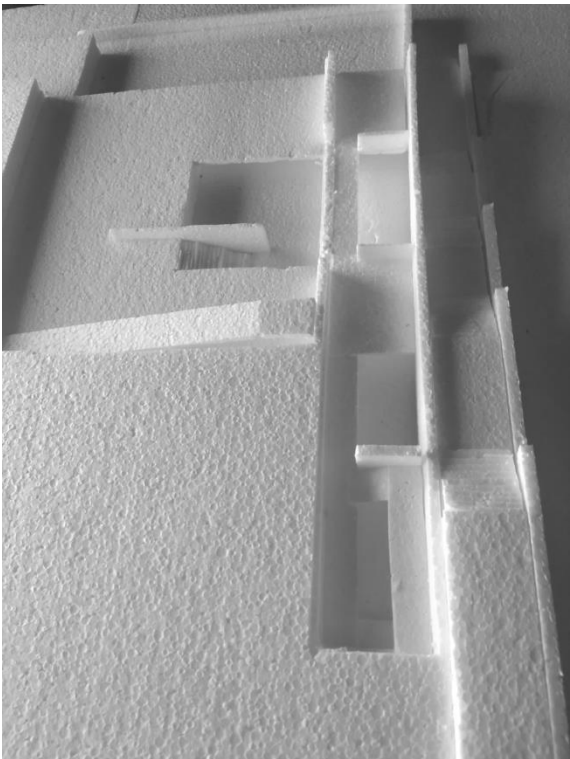


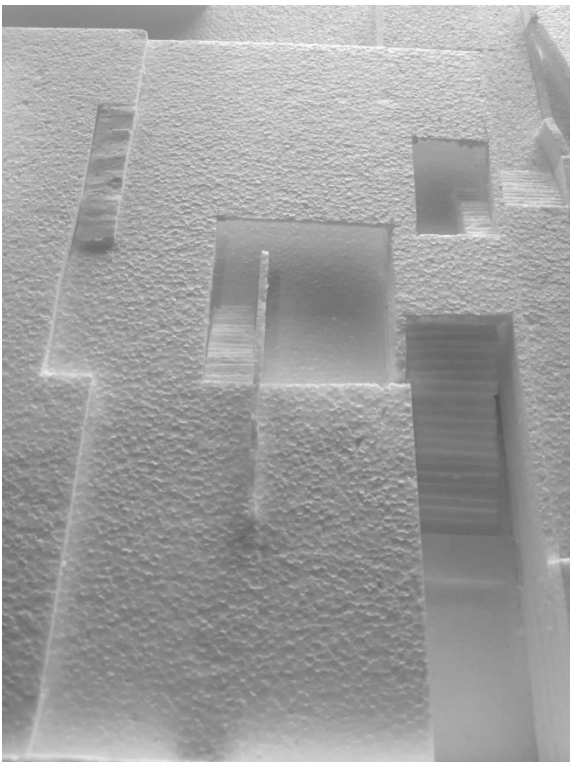


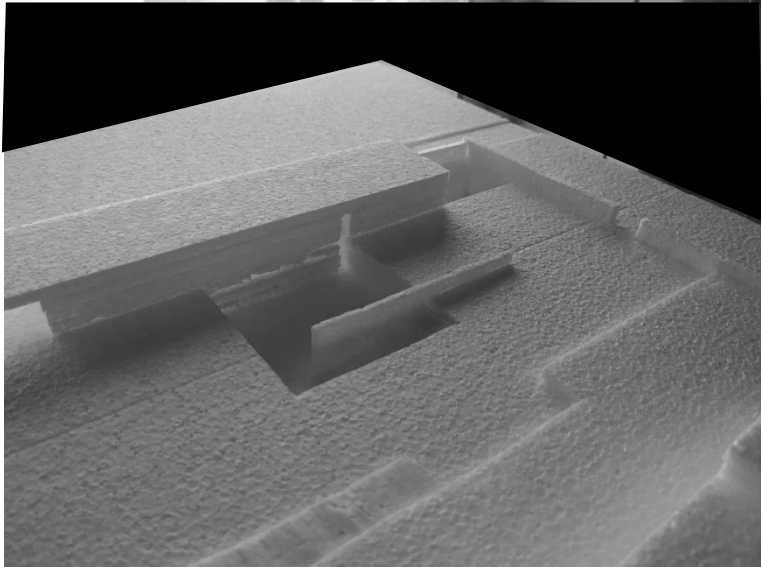


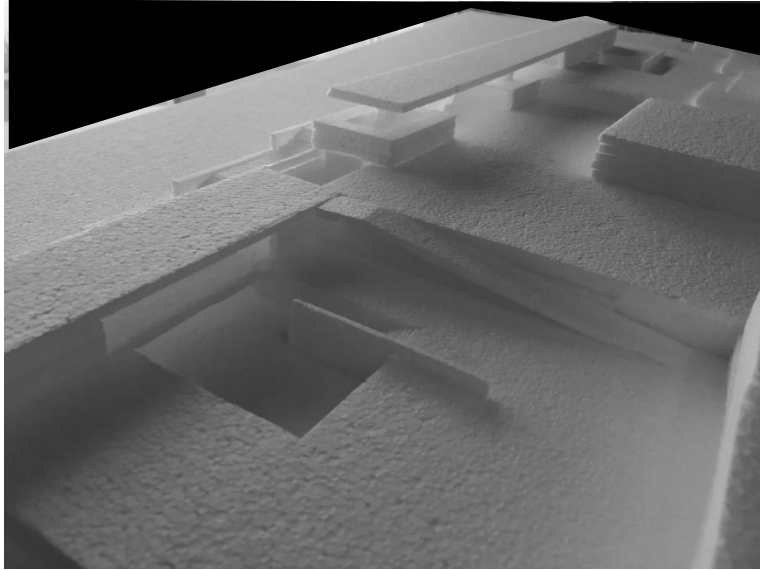


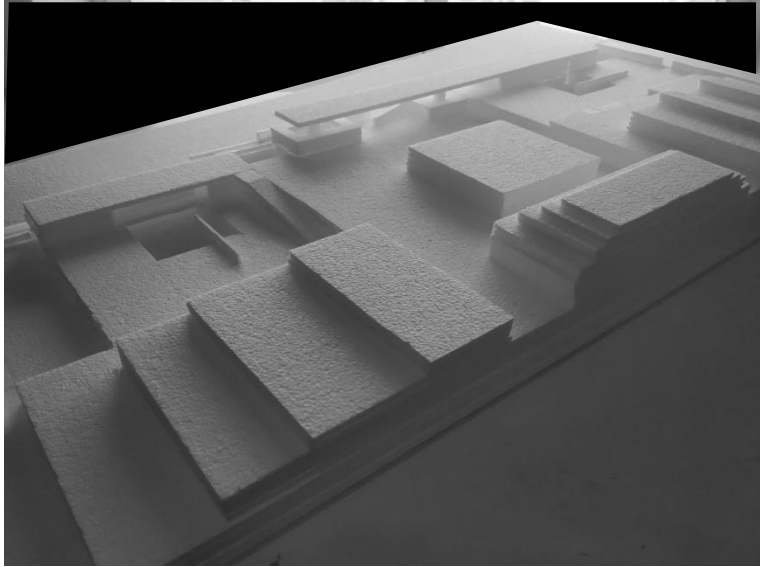


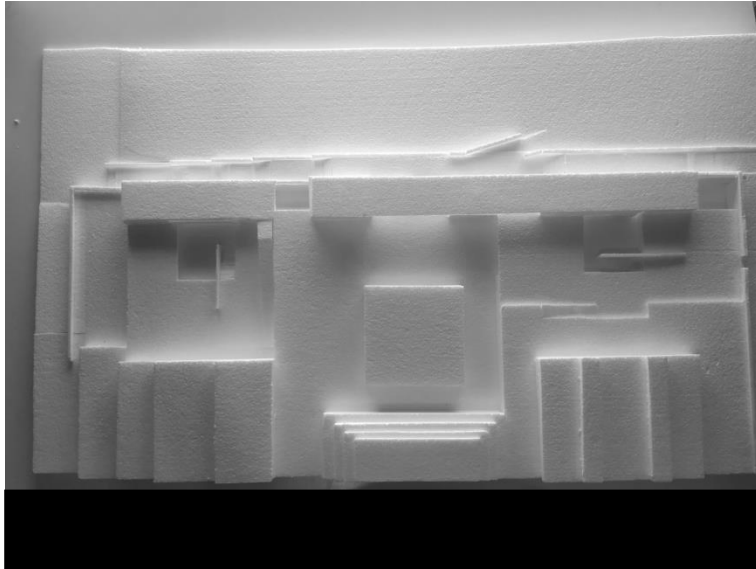


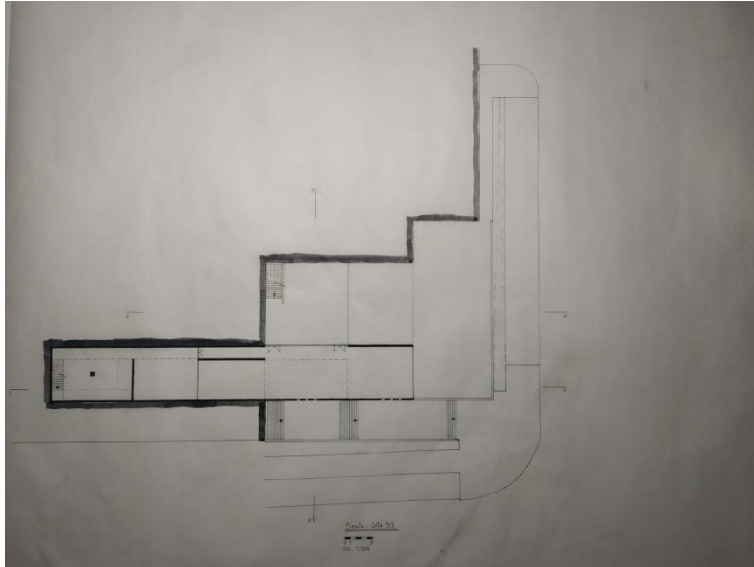




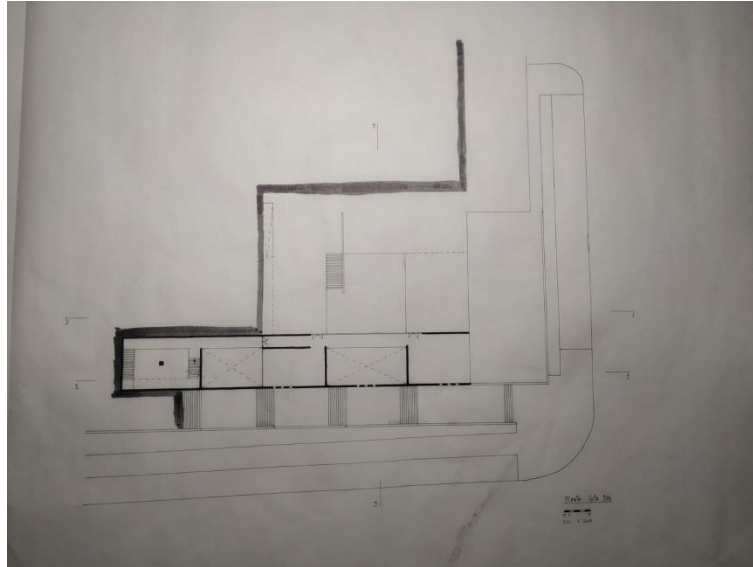




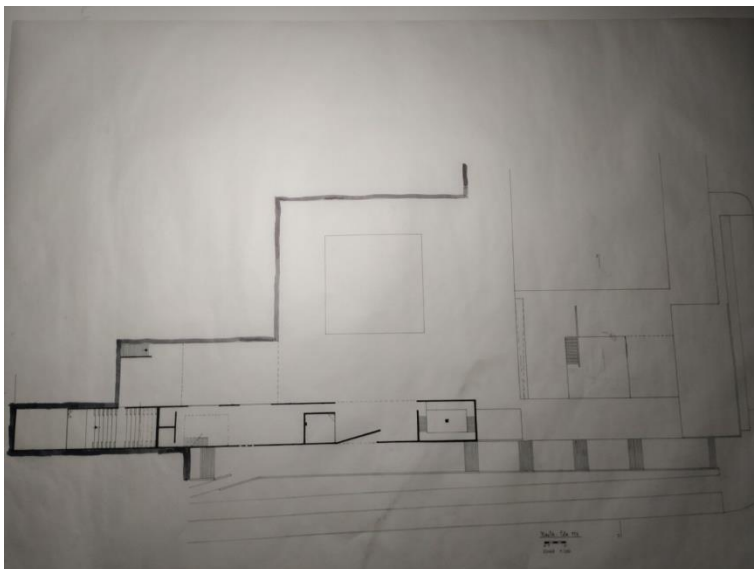




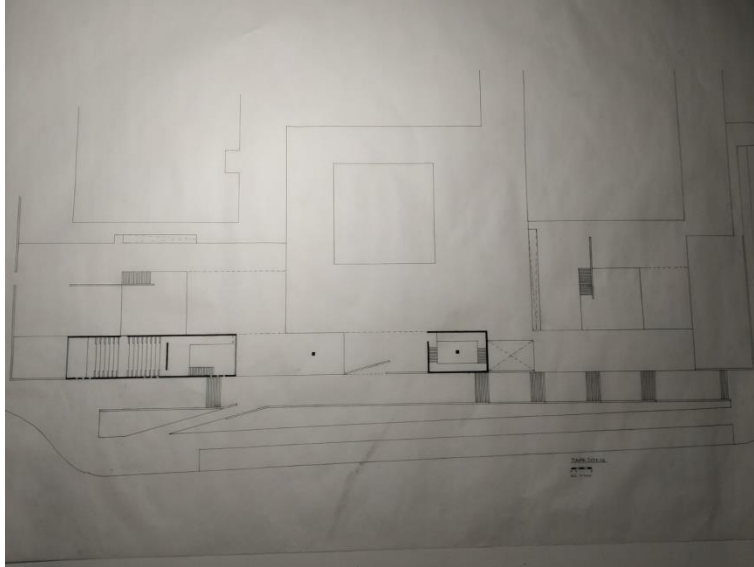
planta – cota 103



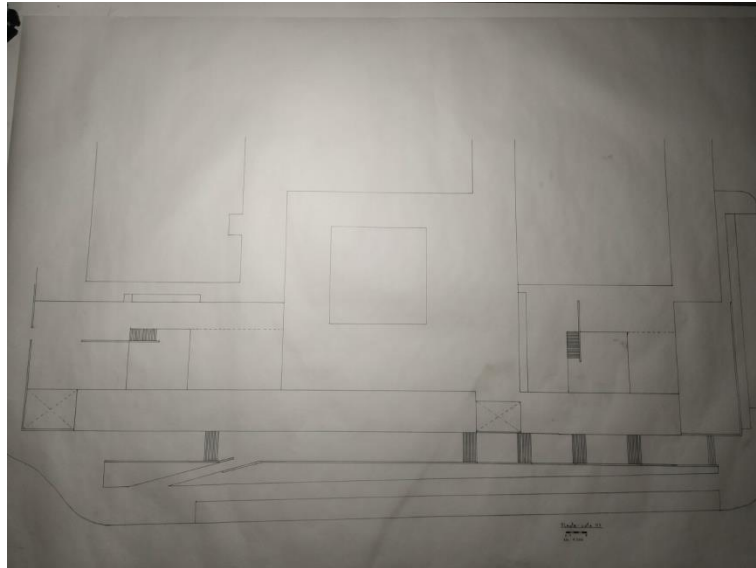
planta – cota 106



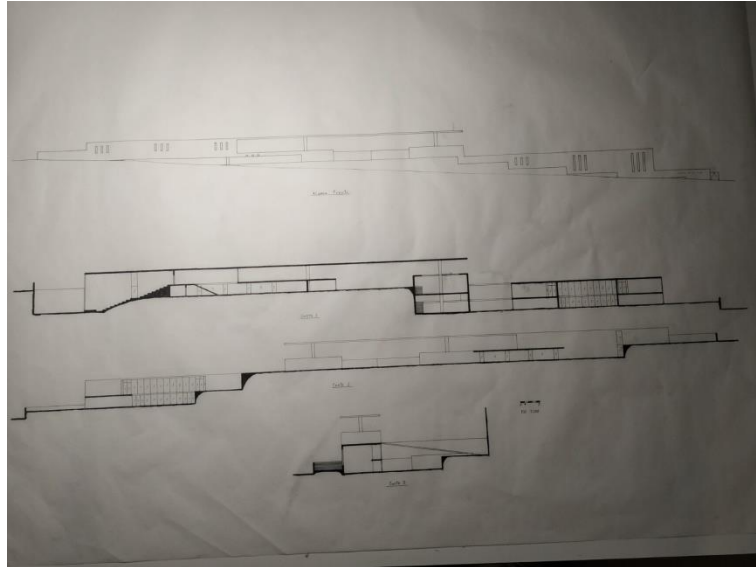
planta – cota 110



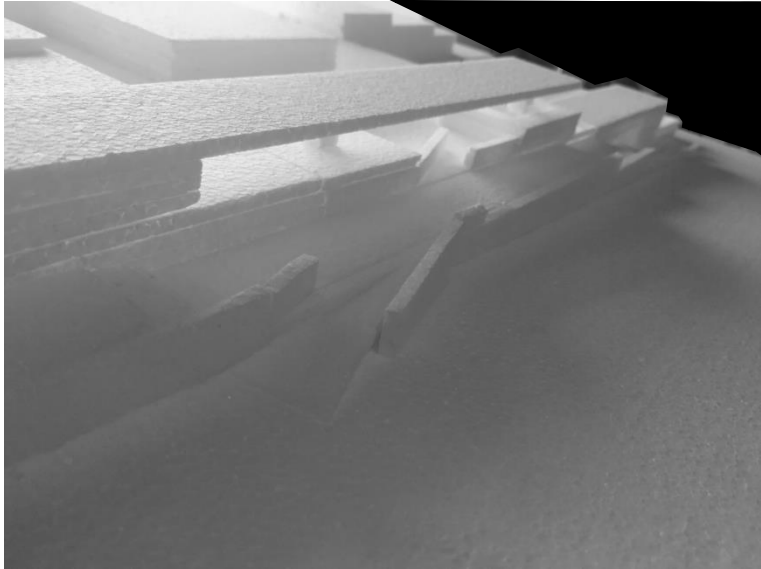
planta – cota 113



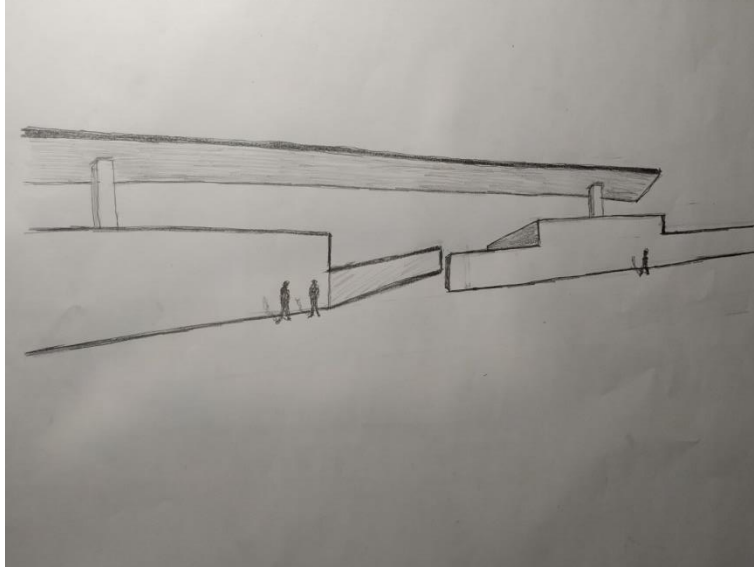
planta – cota 117



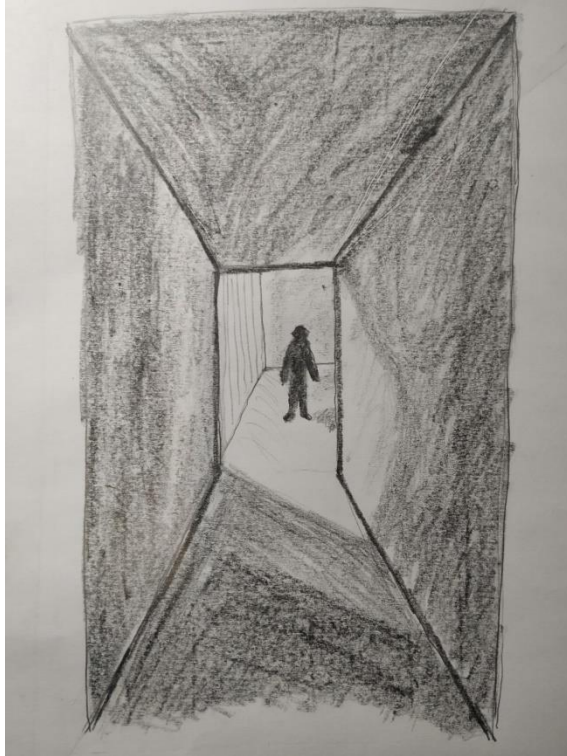
alçados e cortes



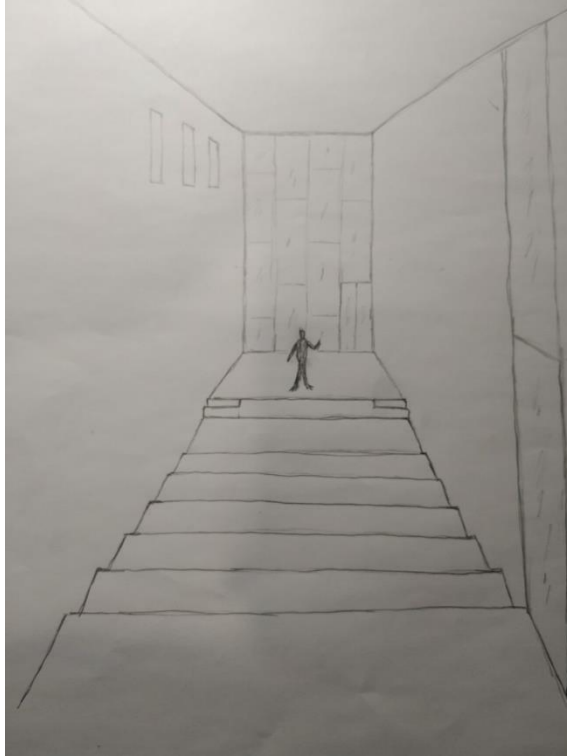
desenho(s) complementares



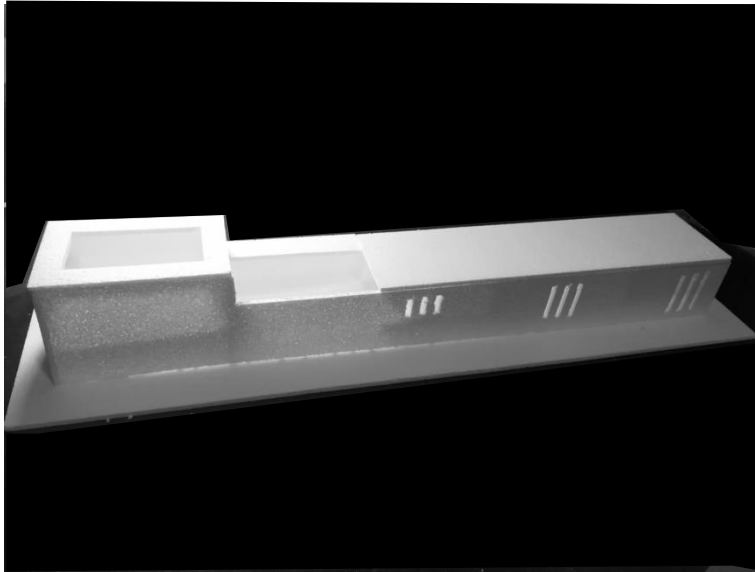
visão serial

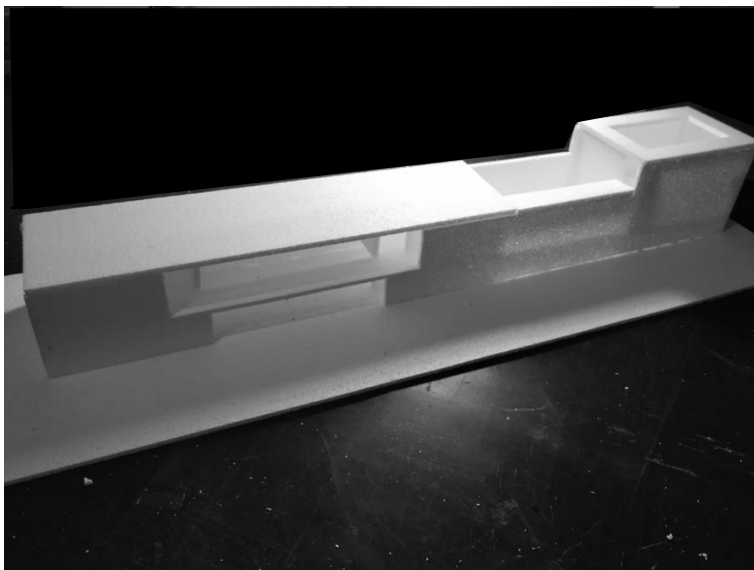


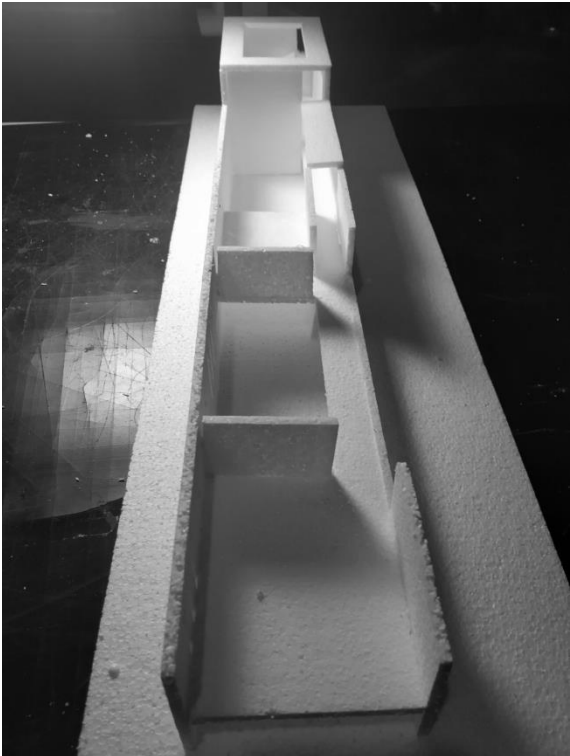
visão serial

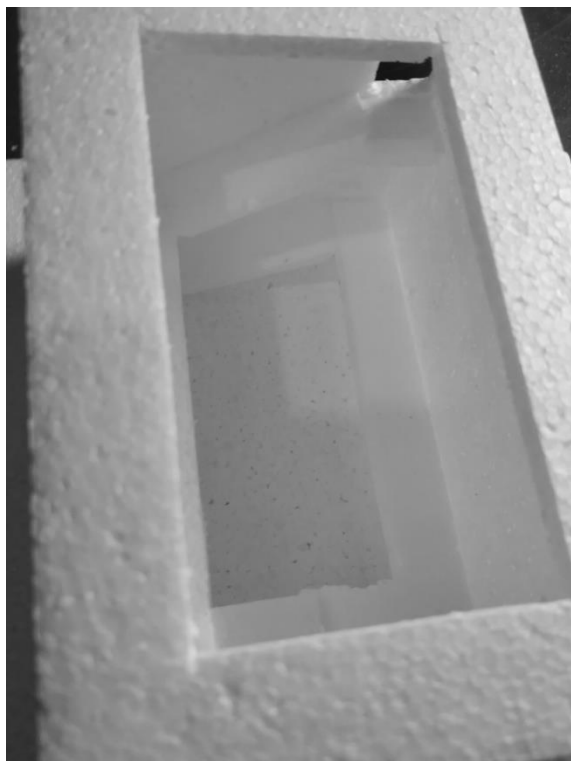


visão serial









1ª fase

lado nascente

Proposta



Chichu – Art Museum, Tadao Ando





Chichu – Art Museum, Tadao Ando

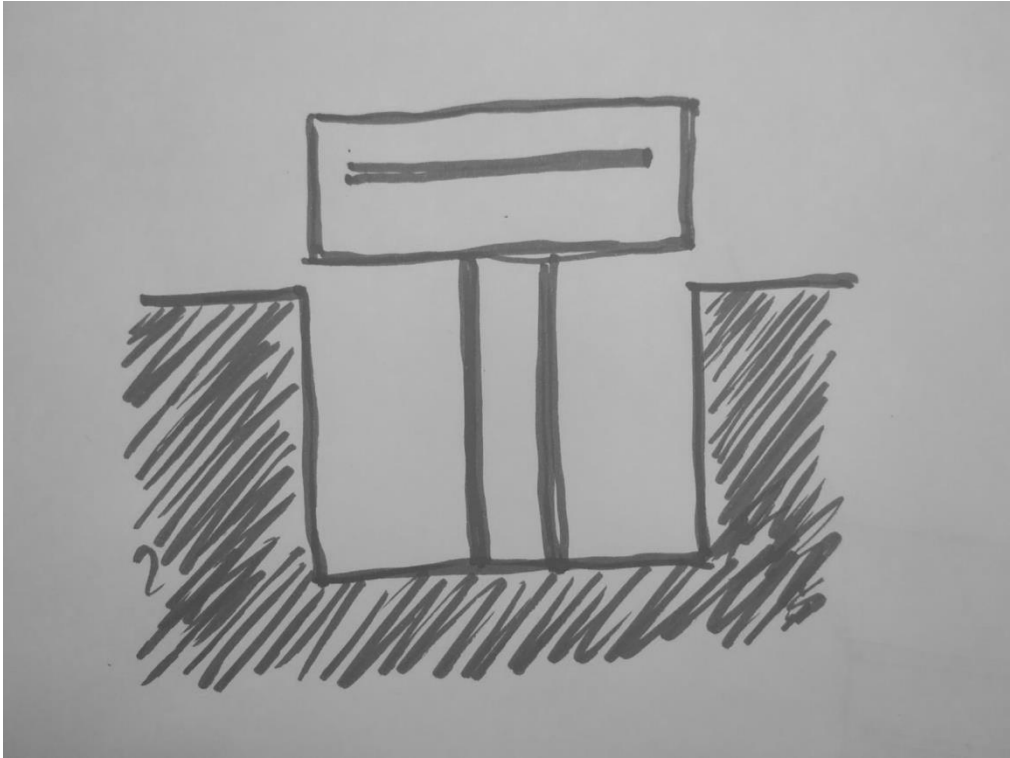


Chichu – Art Museum, Tadao Ando

“You cannot simply put something new into a place. You have to absorb what you see around you, what exists on the land, and then use that knowledge along with contemporary thinking to interpret what you see.”

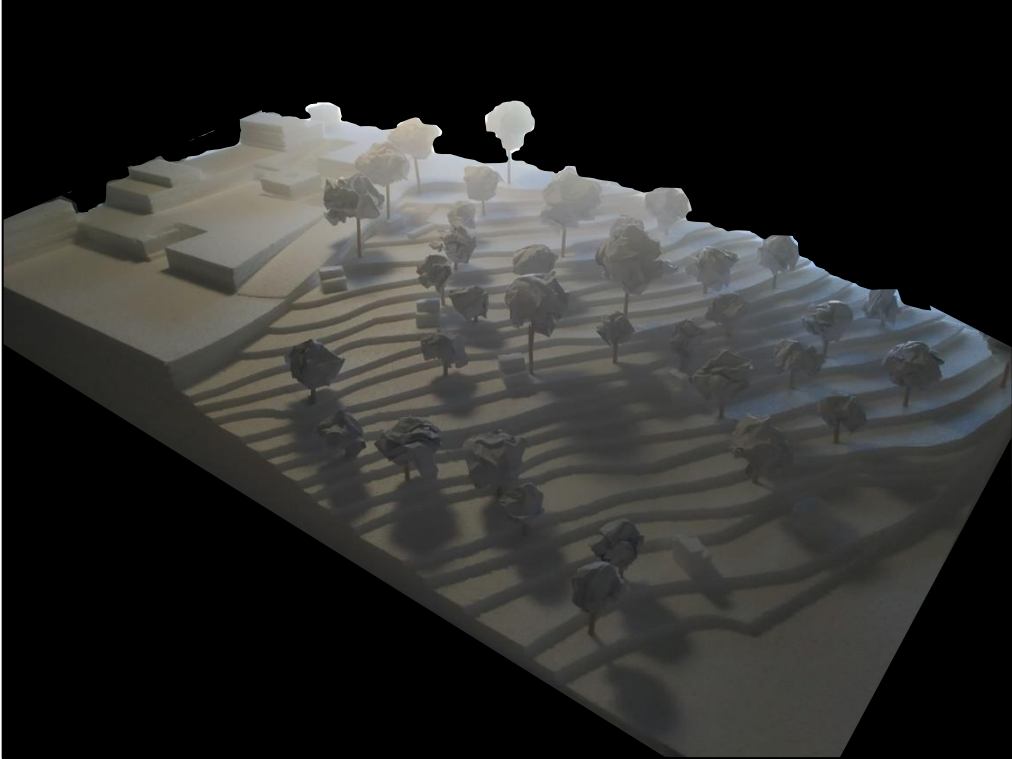
Tadao Ando

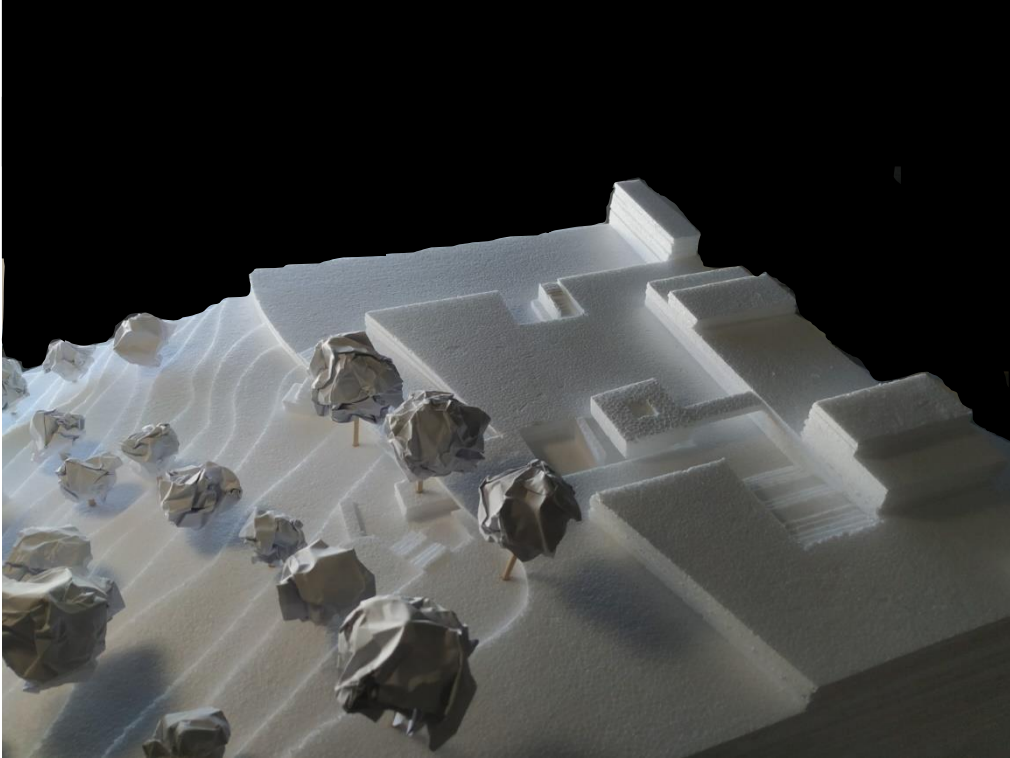


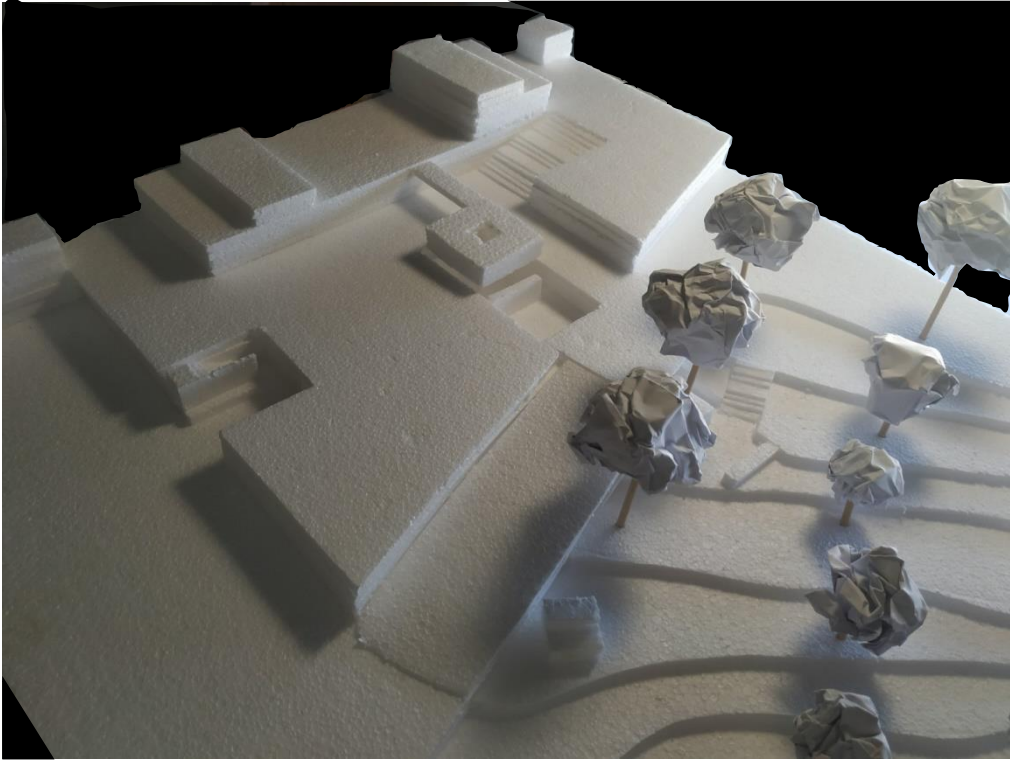


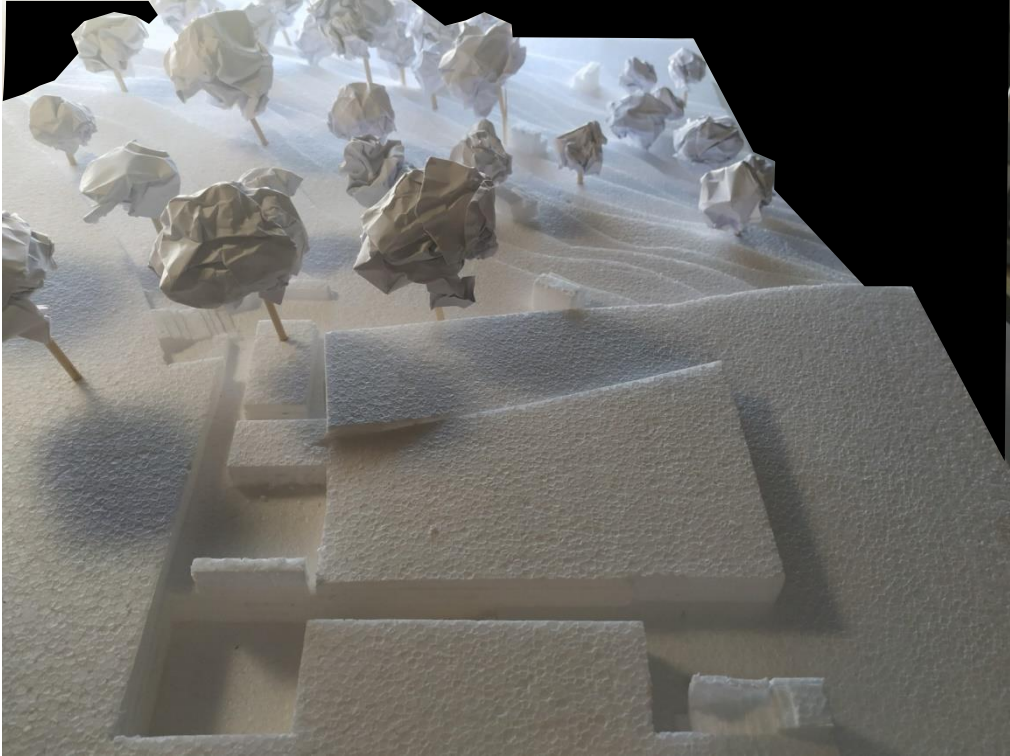
esquiço síntese

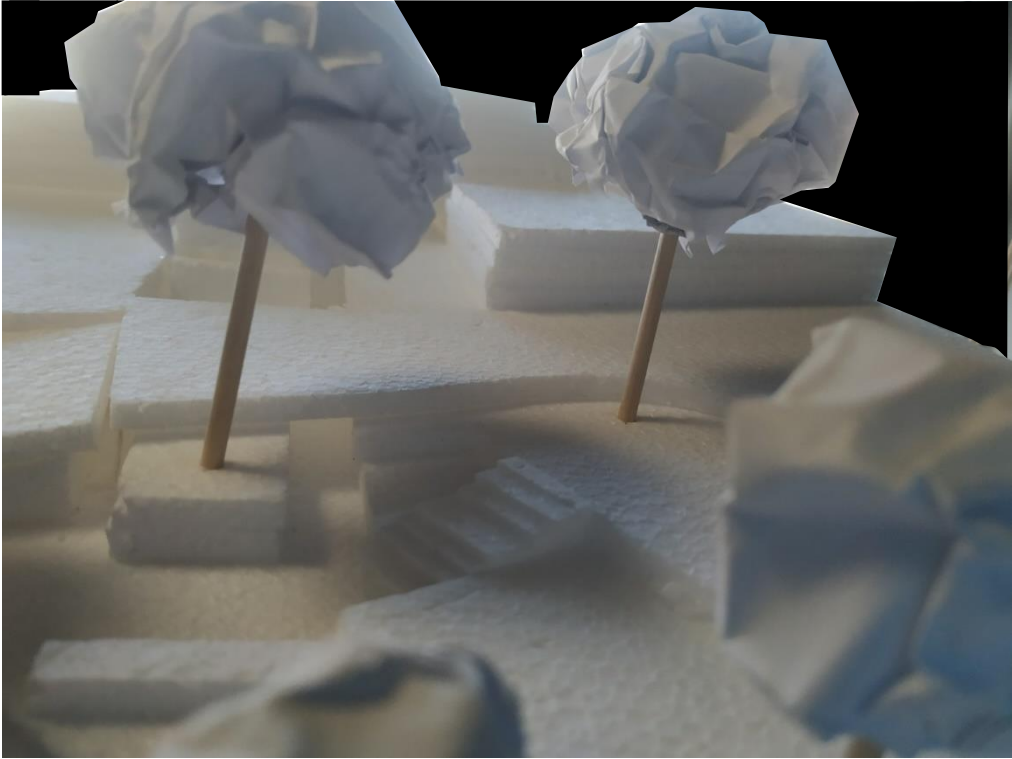




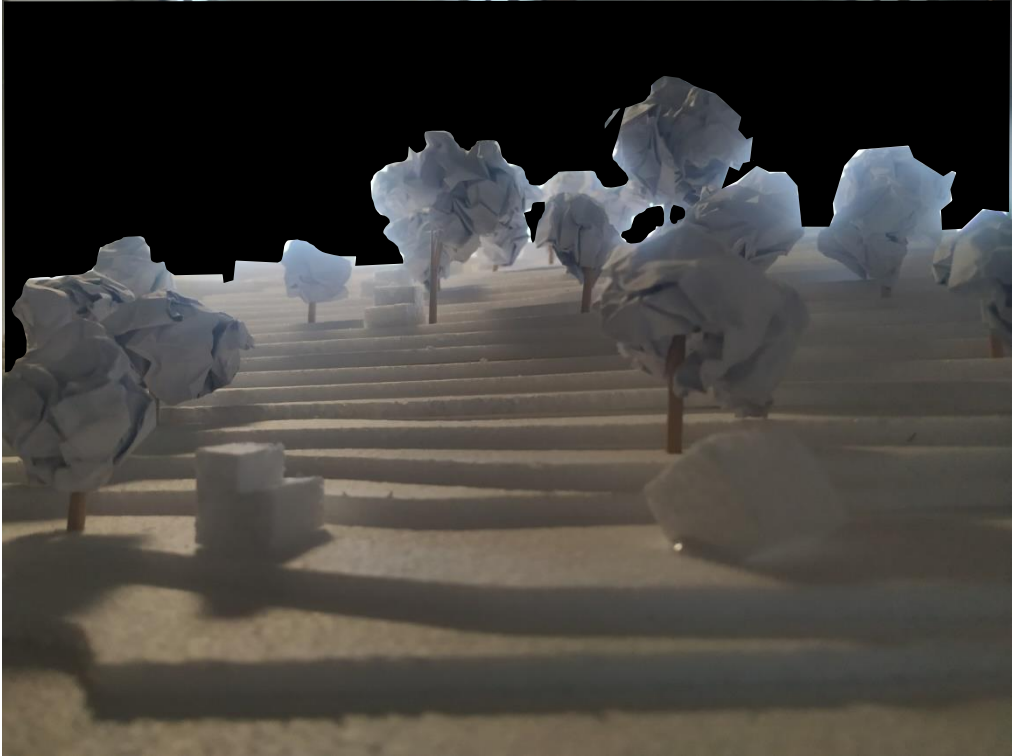








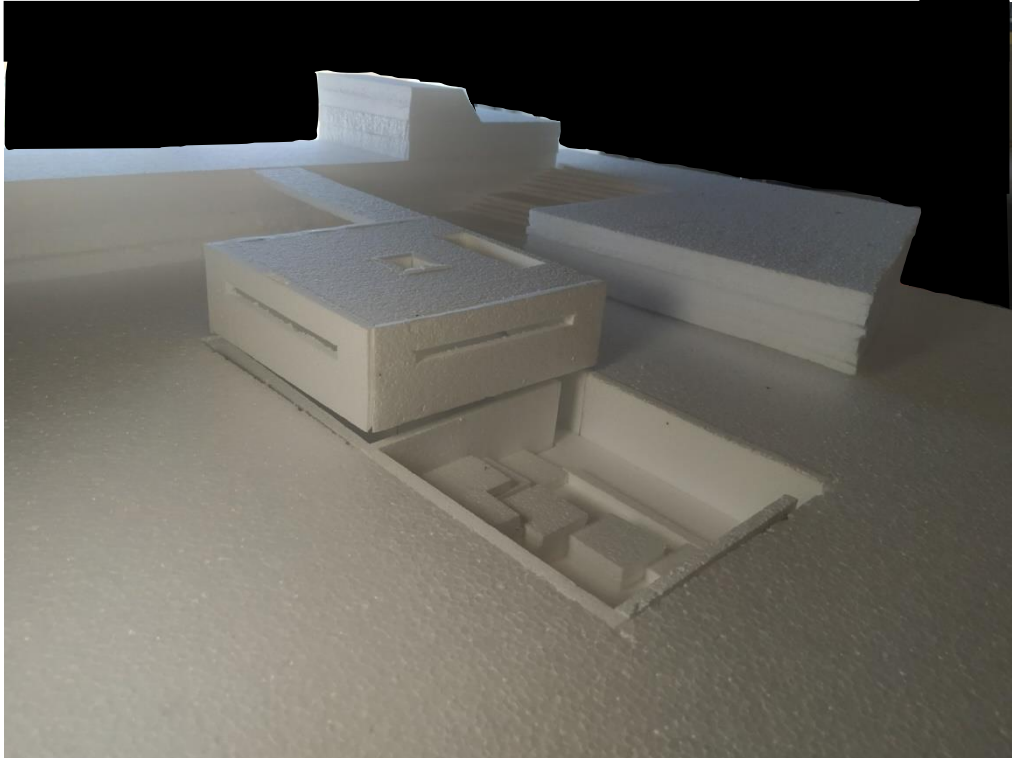


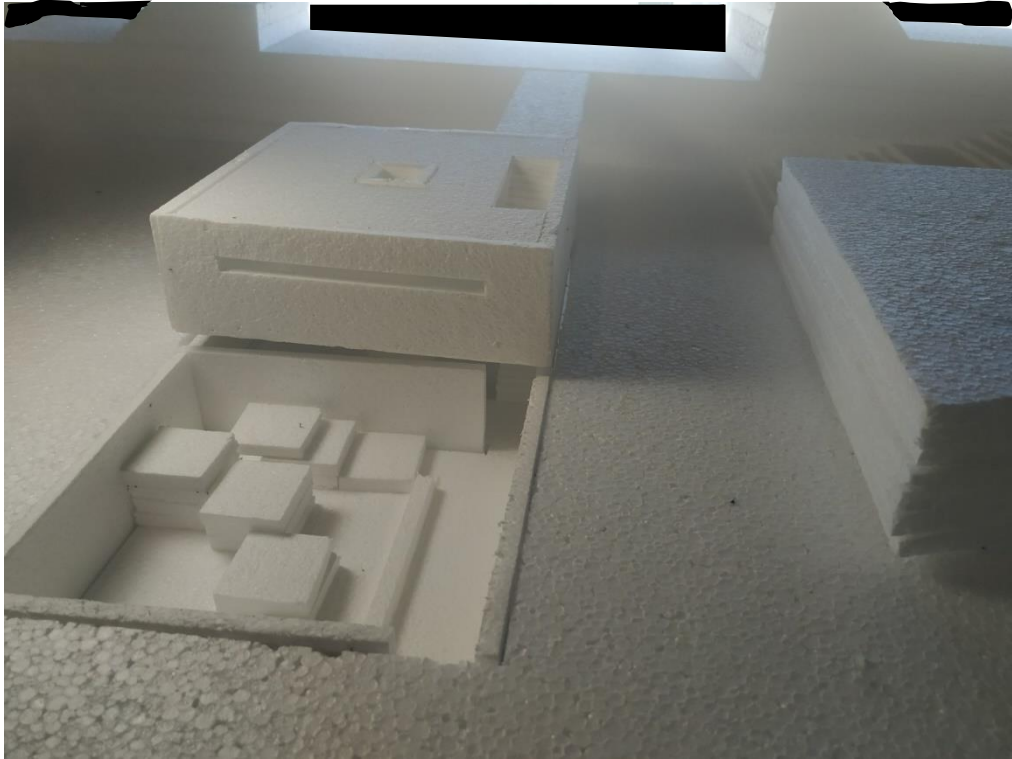




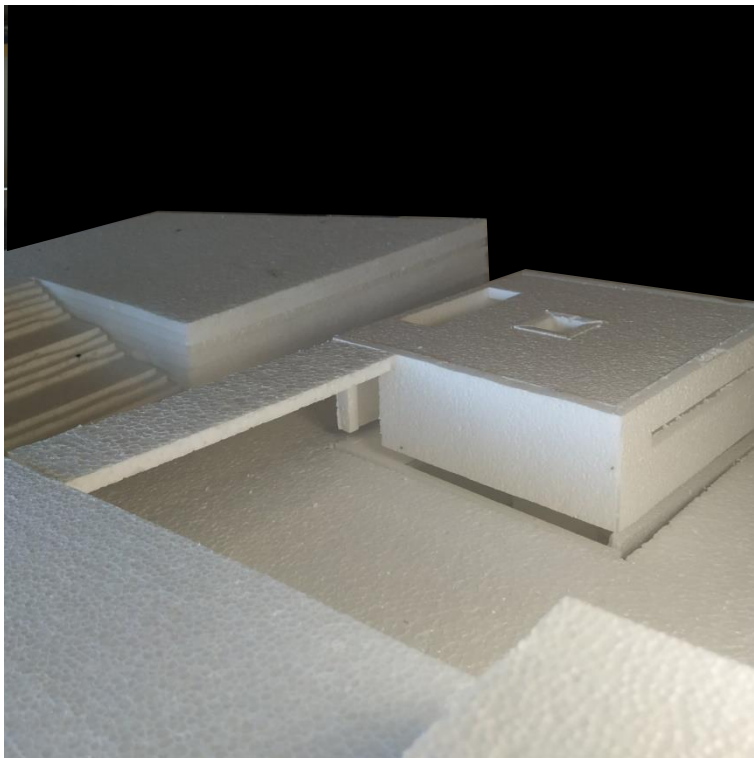
planta e perfil de conjunto

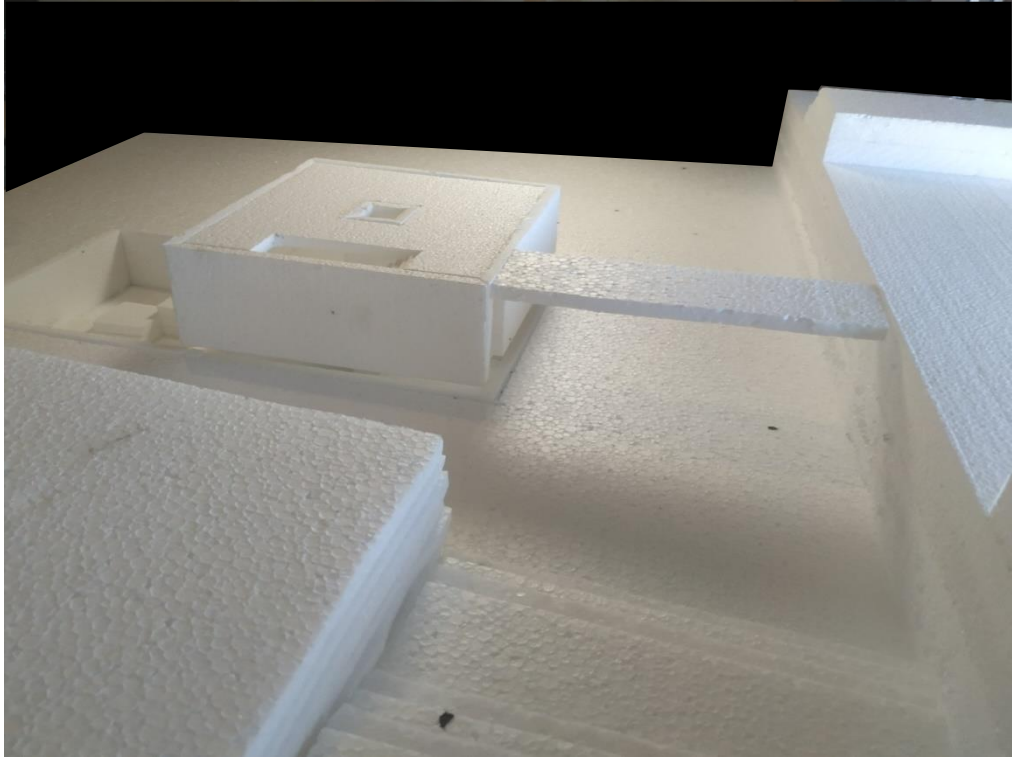


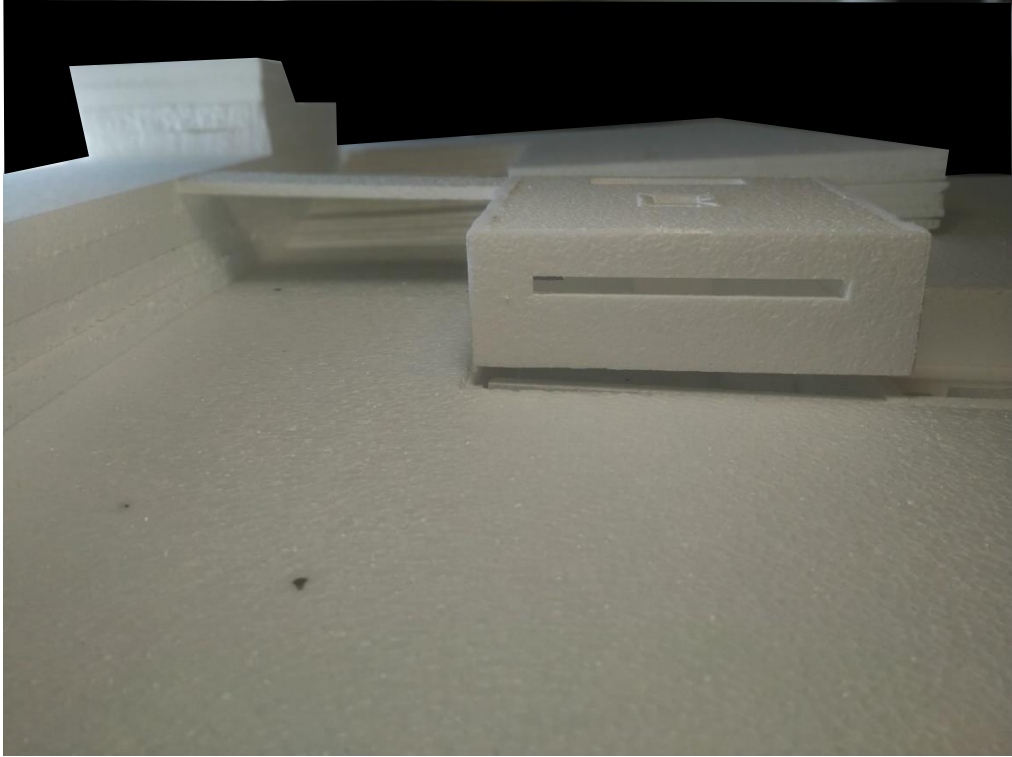


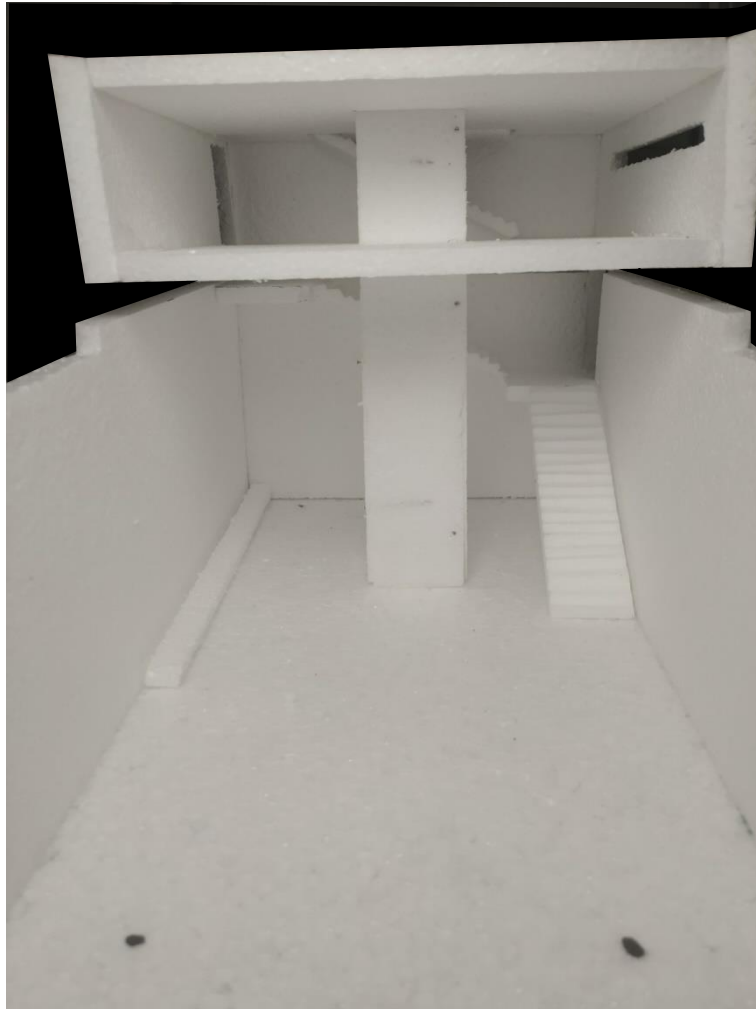


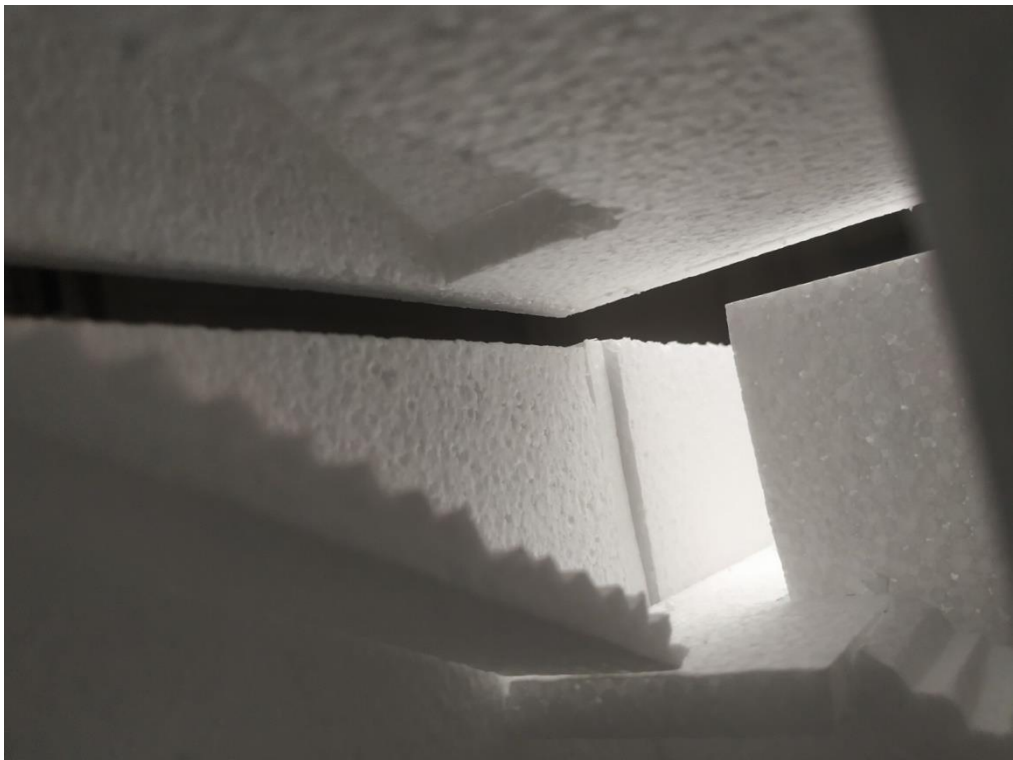




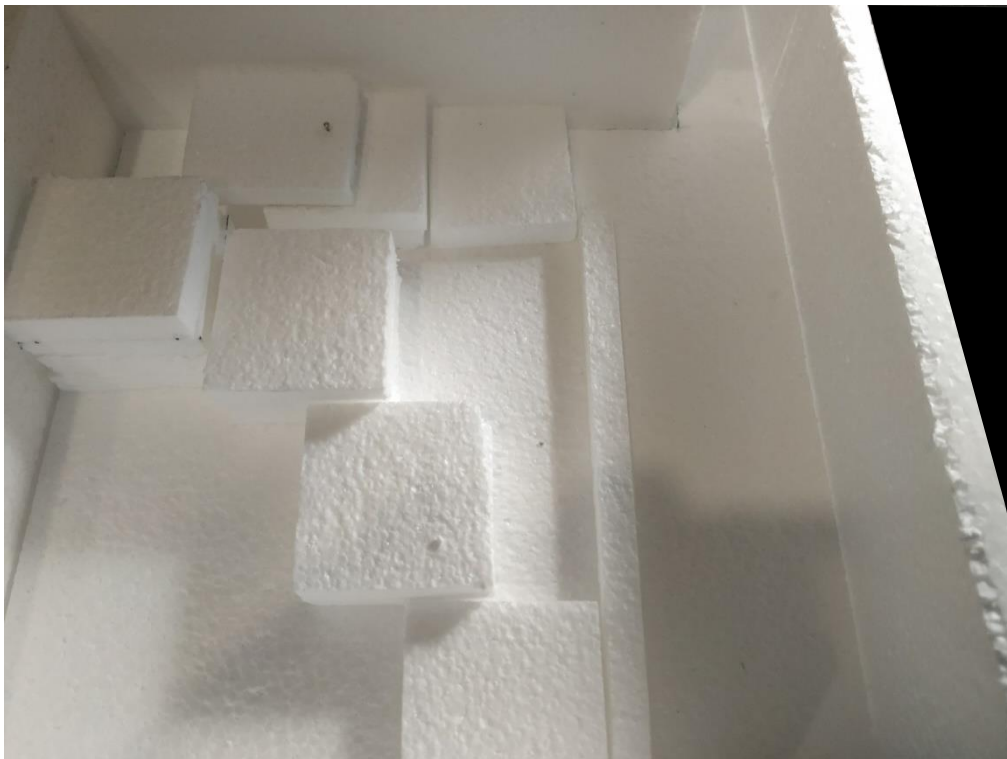


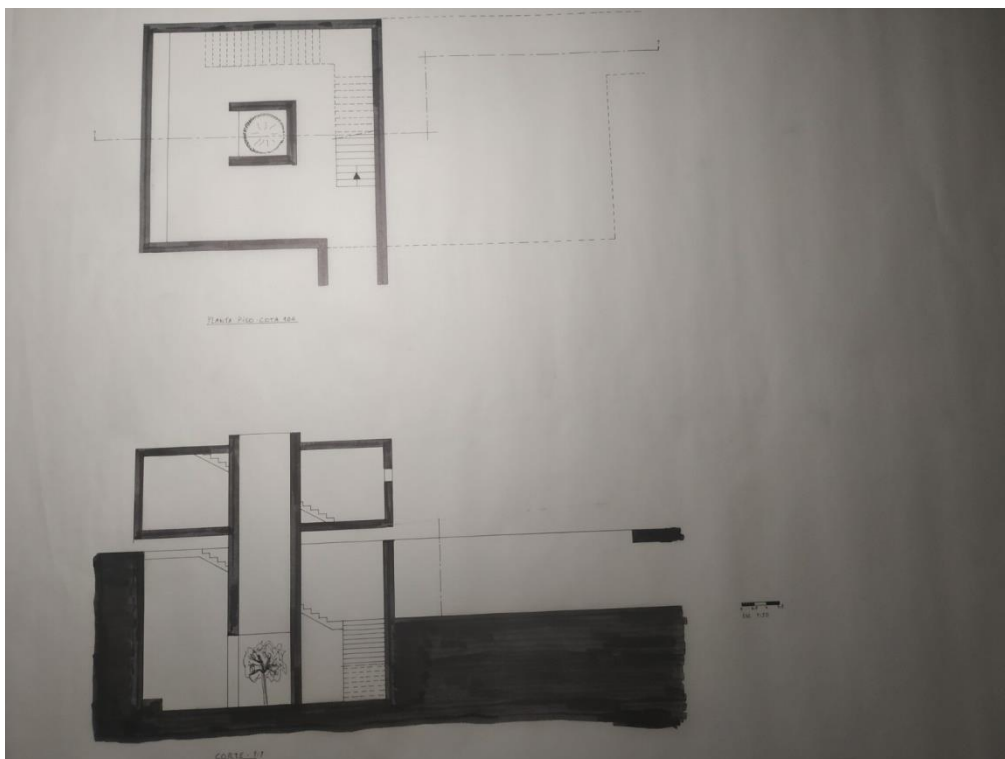




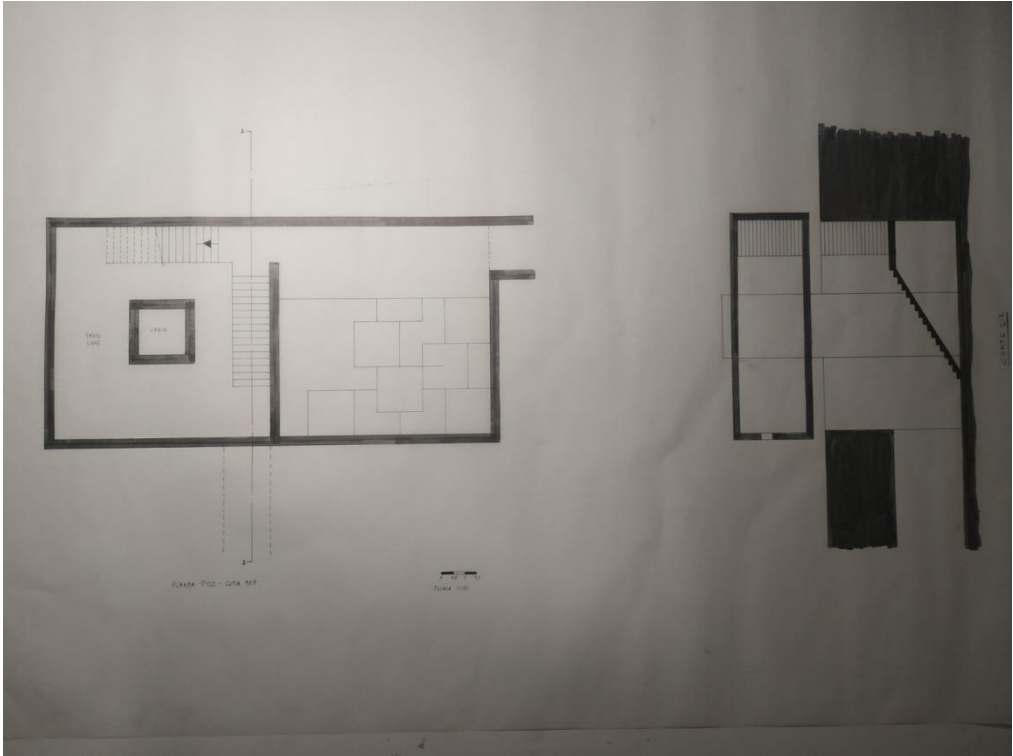




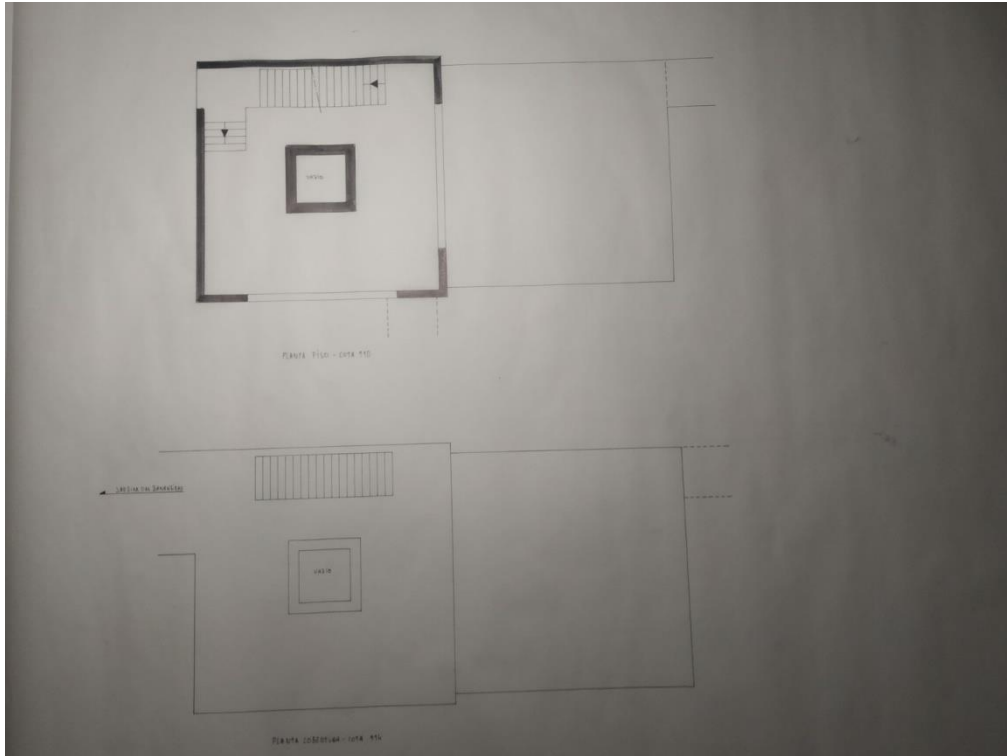




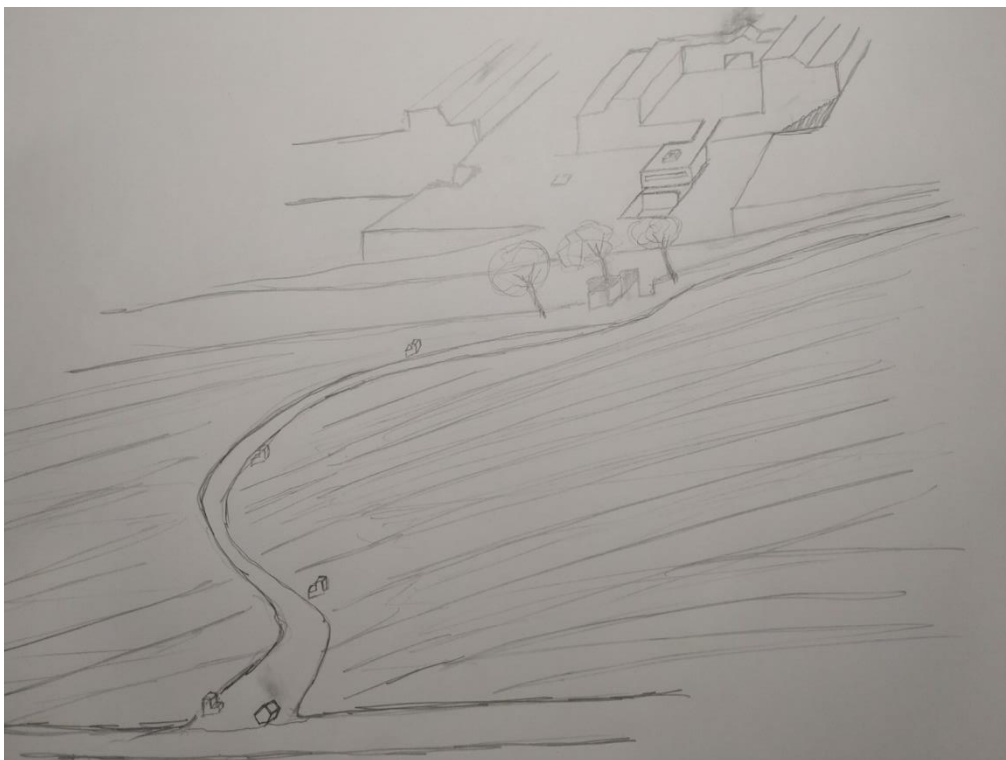
planta e corte



planta e corte

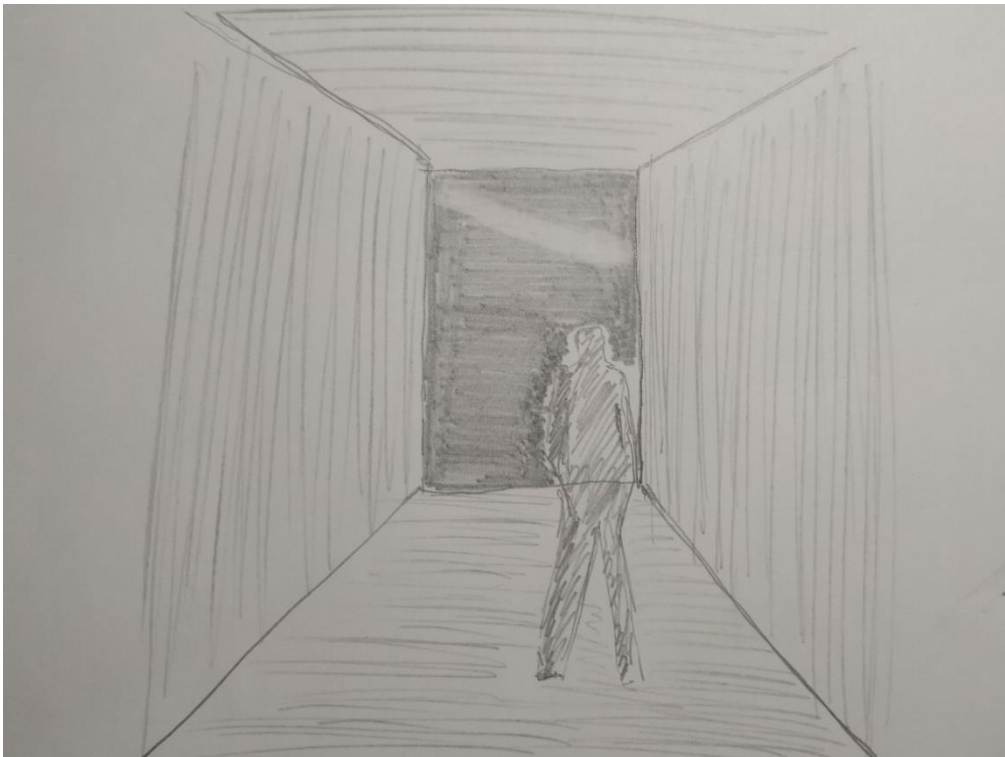


planta e corte



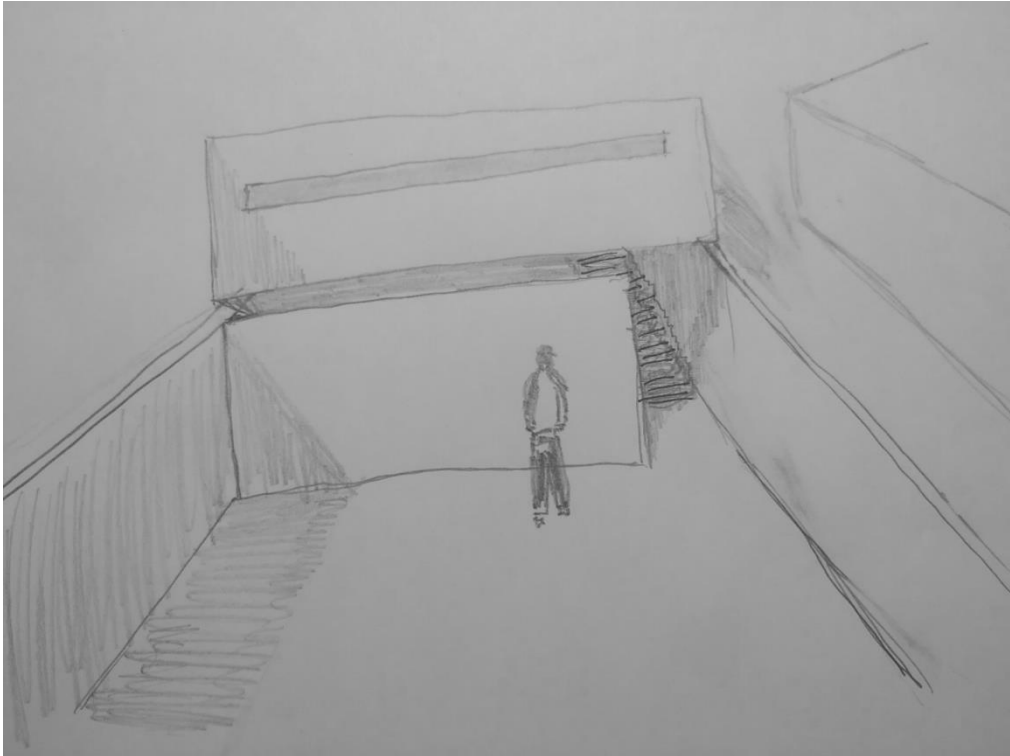
visão serial





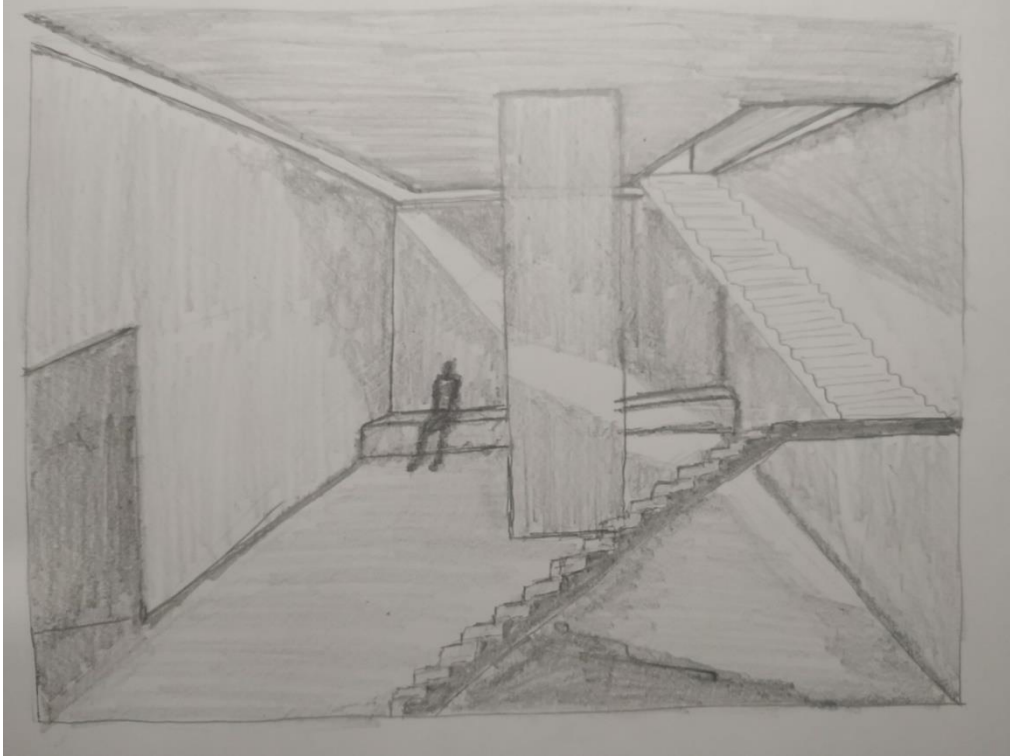
visão serial





visão serial





visão serial



Processo

