

01

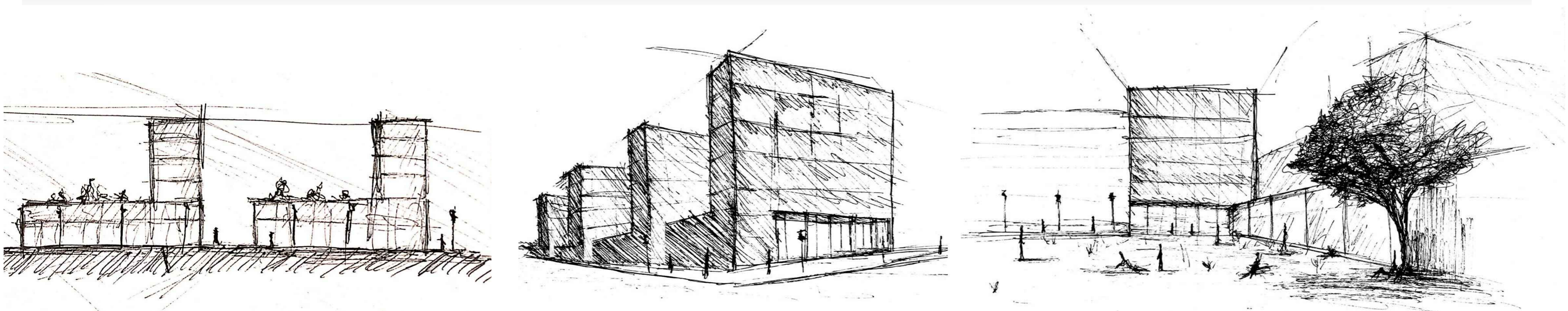
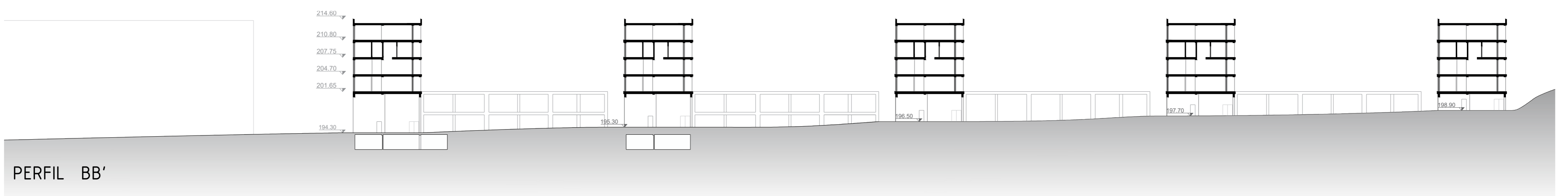
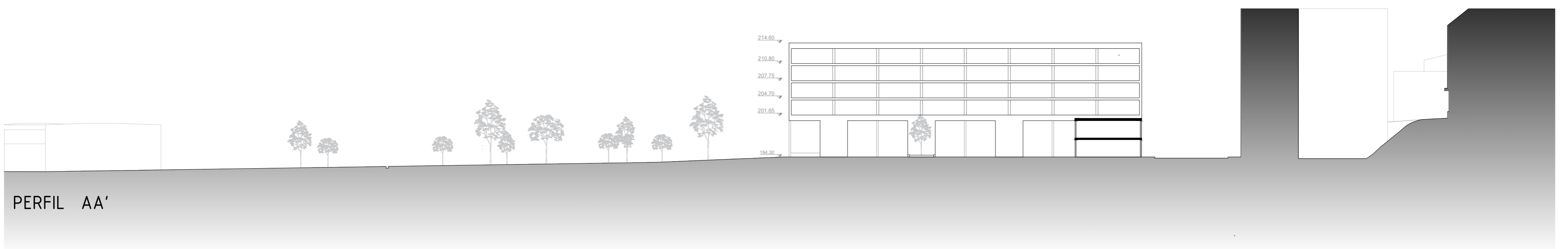
UNIDADES HABITACIONAIS PORTELA

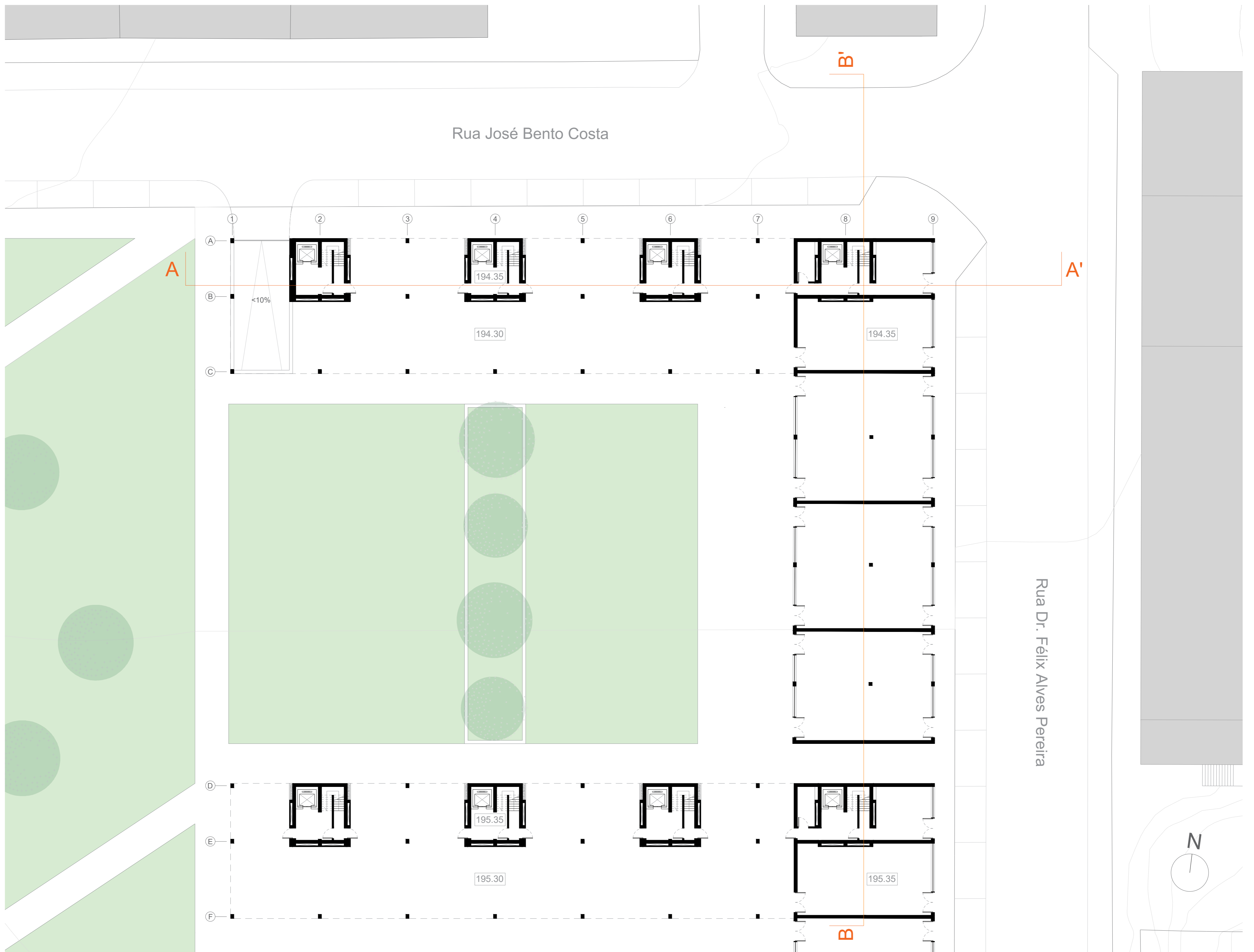
Planta de Enquadramento | Perfis | Esquissos
esc. 1/500
Portela de Sintra . Sintra

Laboratório de Projecto III . MIARQ
Turma A_Eng . 2020/2021
Tiago Varrecoso . nº 20181141

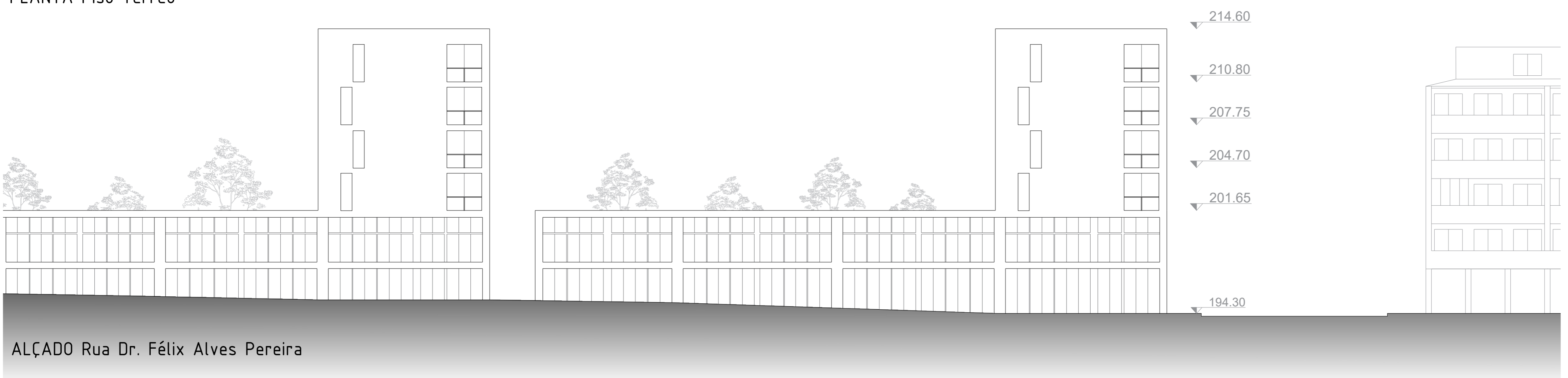


PLANTA Geral de Enquadramento

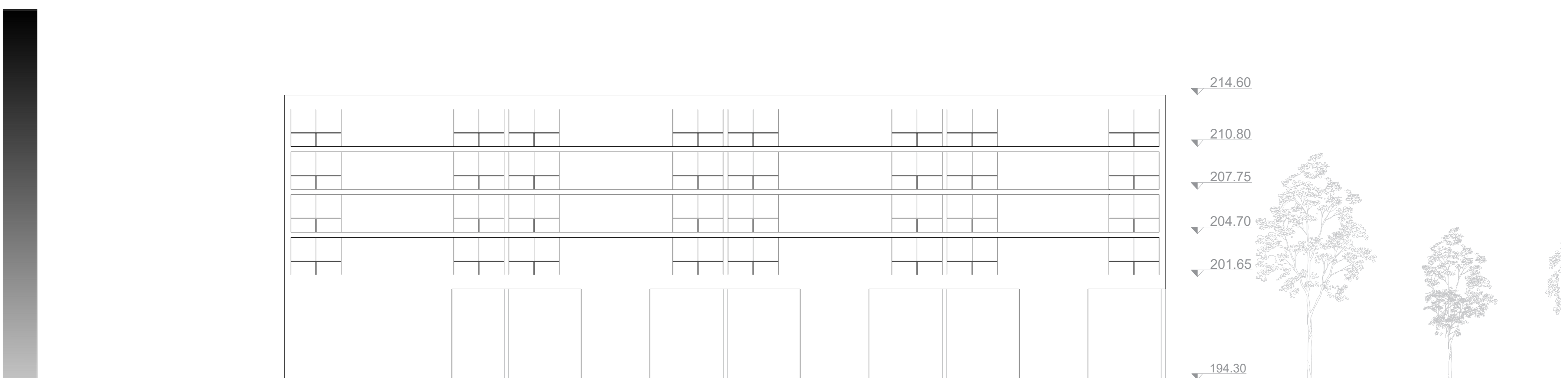




PLANTA Piso Térreo



ALÇADO Rua Dr. Félix Alves Pereira



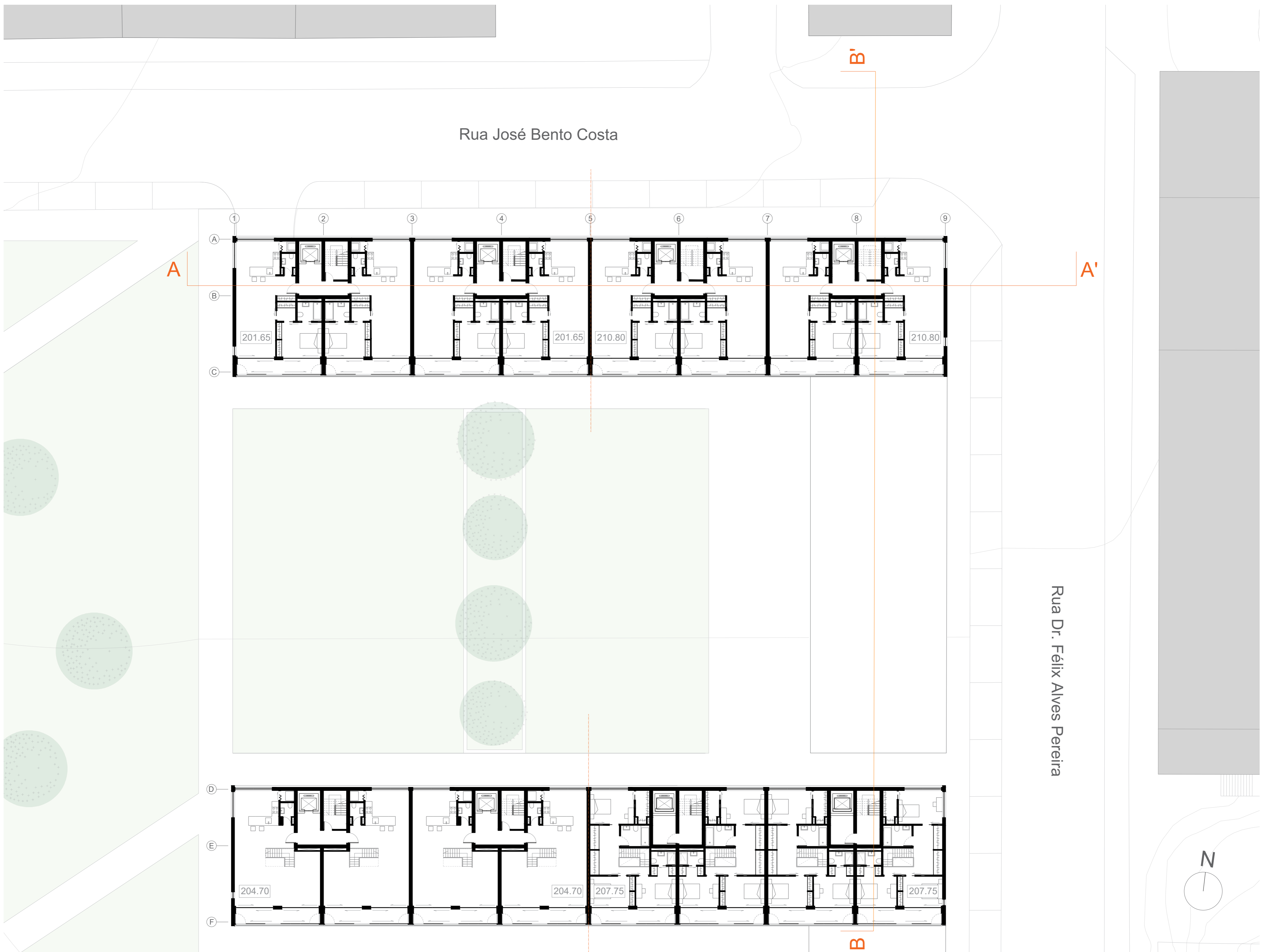
ALÇADO Rua José Bento Costa

03

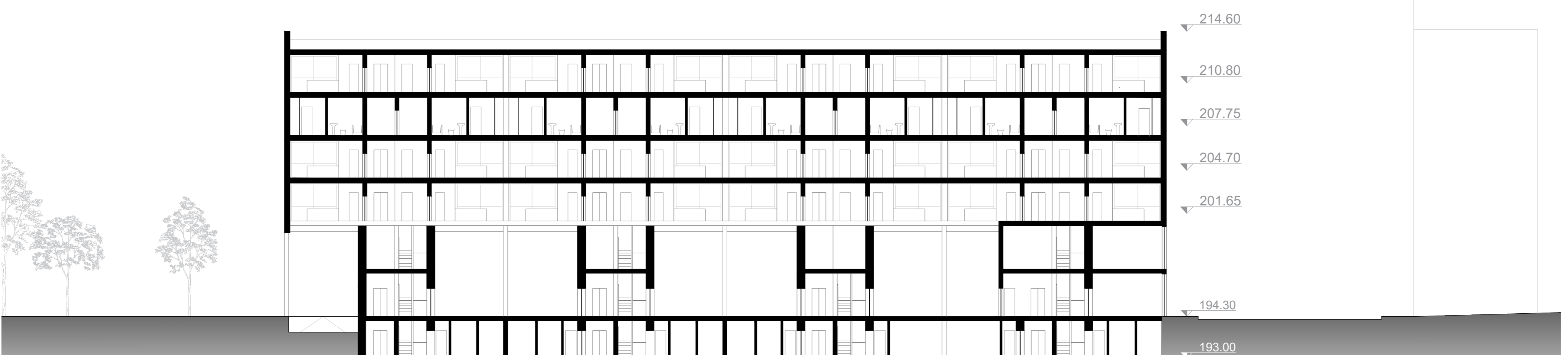
UNIDADES HABITACIONAIS PORTELA

Planta Piso Tipo | Perfis
esc. 1/200
Portela de Sintra . Sintra

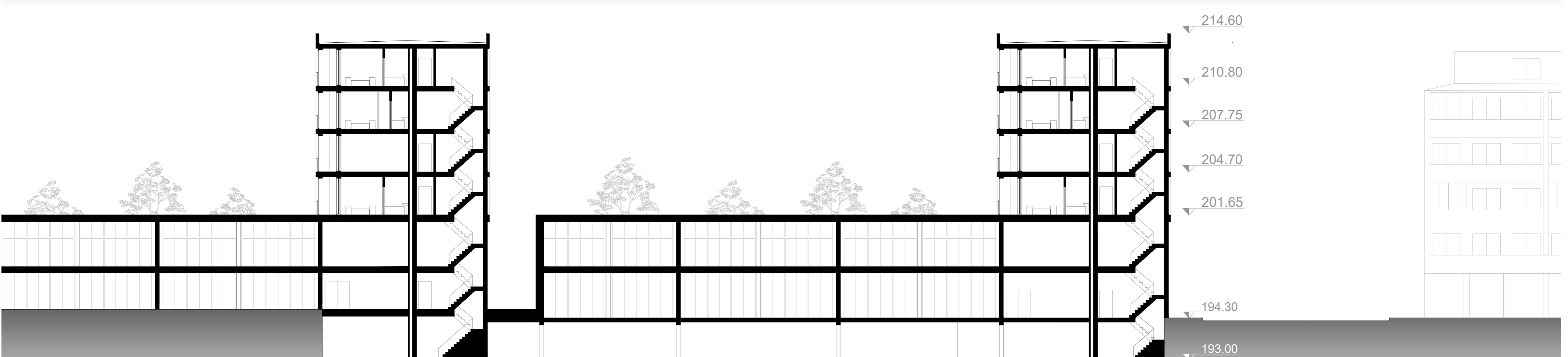
Laboratório de Projecto III . MIARQ
Turma A_Eng . 2020/2021
Tiago Varrecoso . nº 20181141



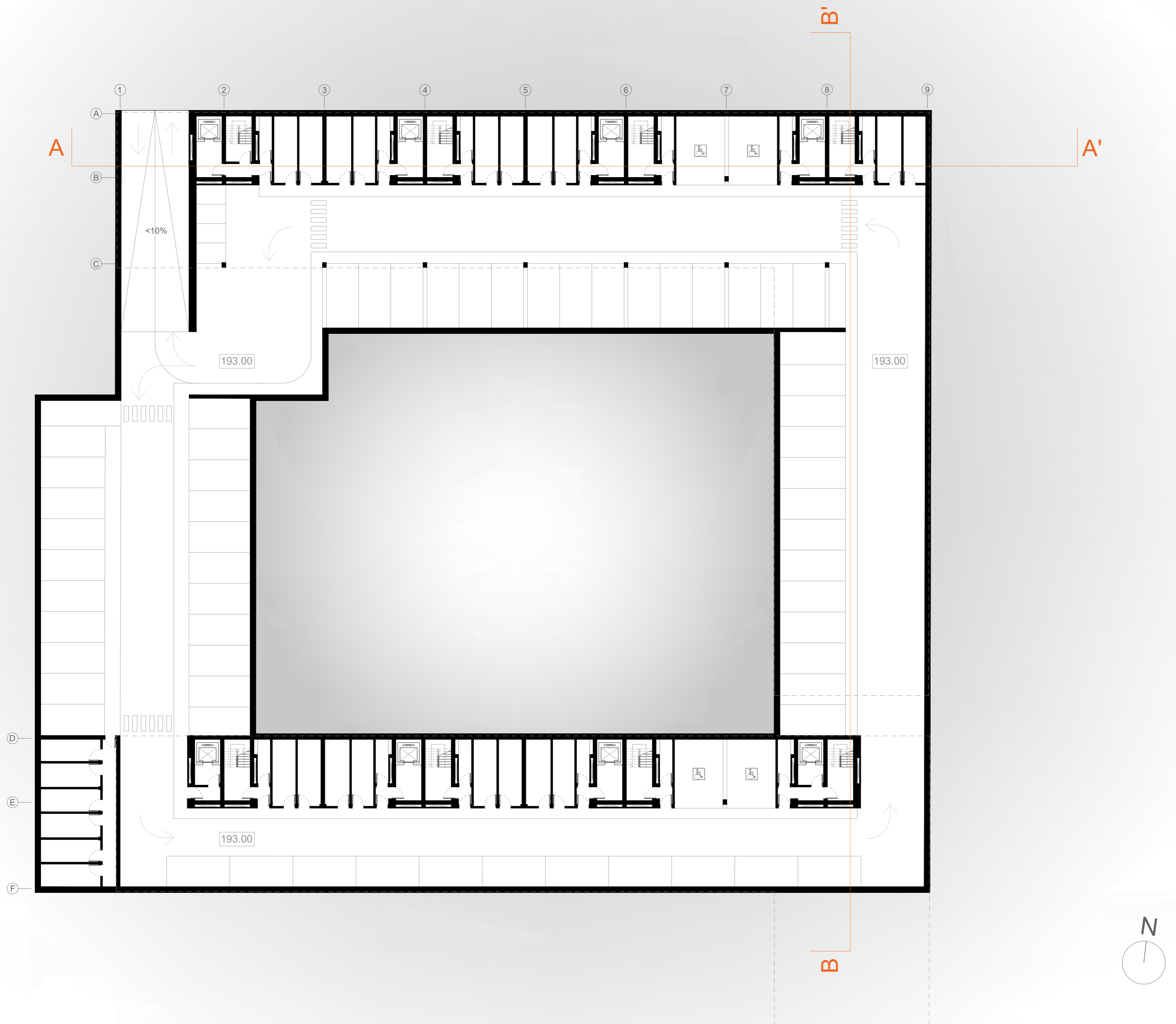
PLANTA Piso Tipo



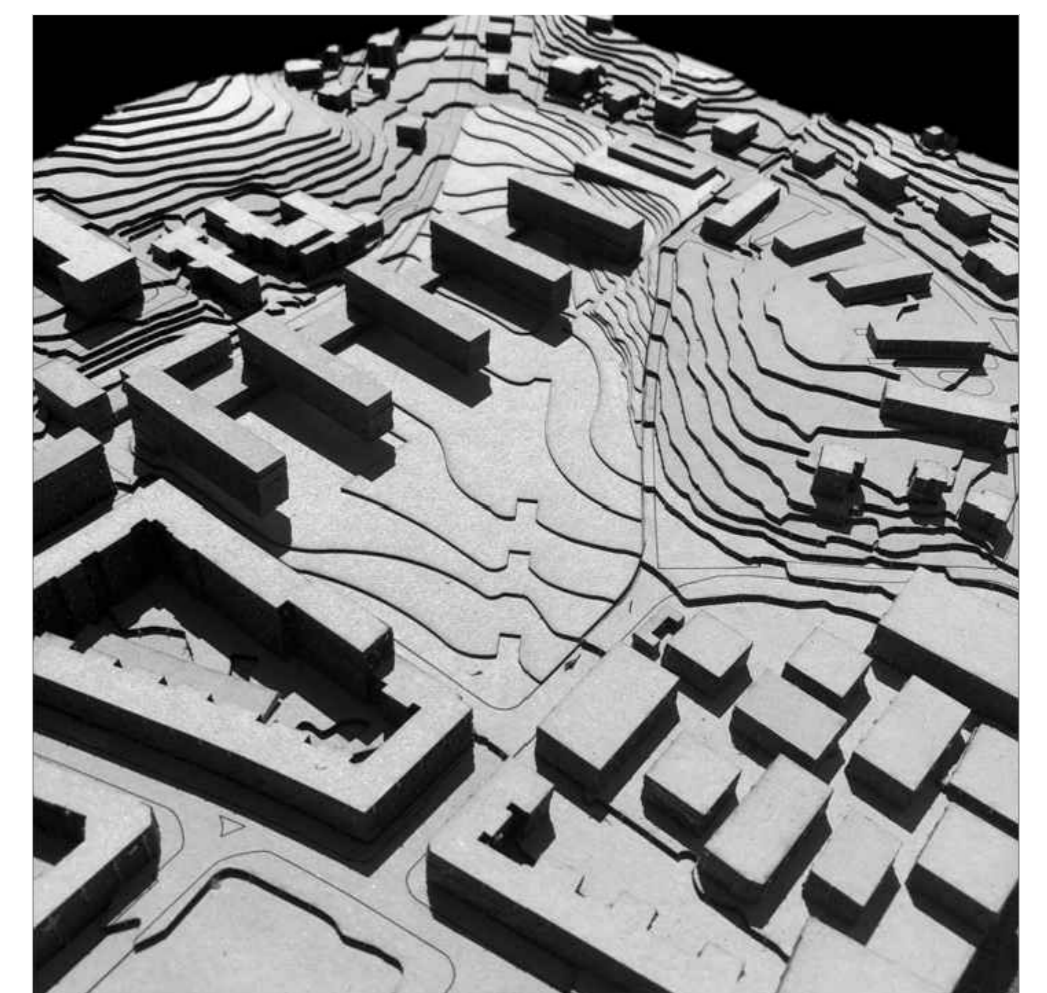
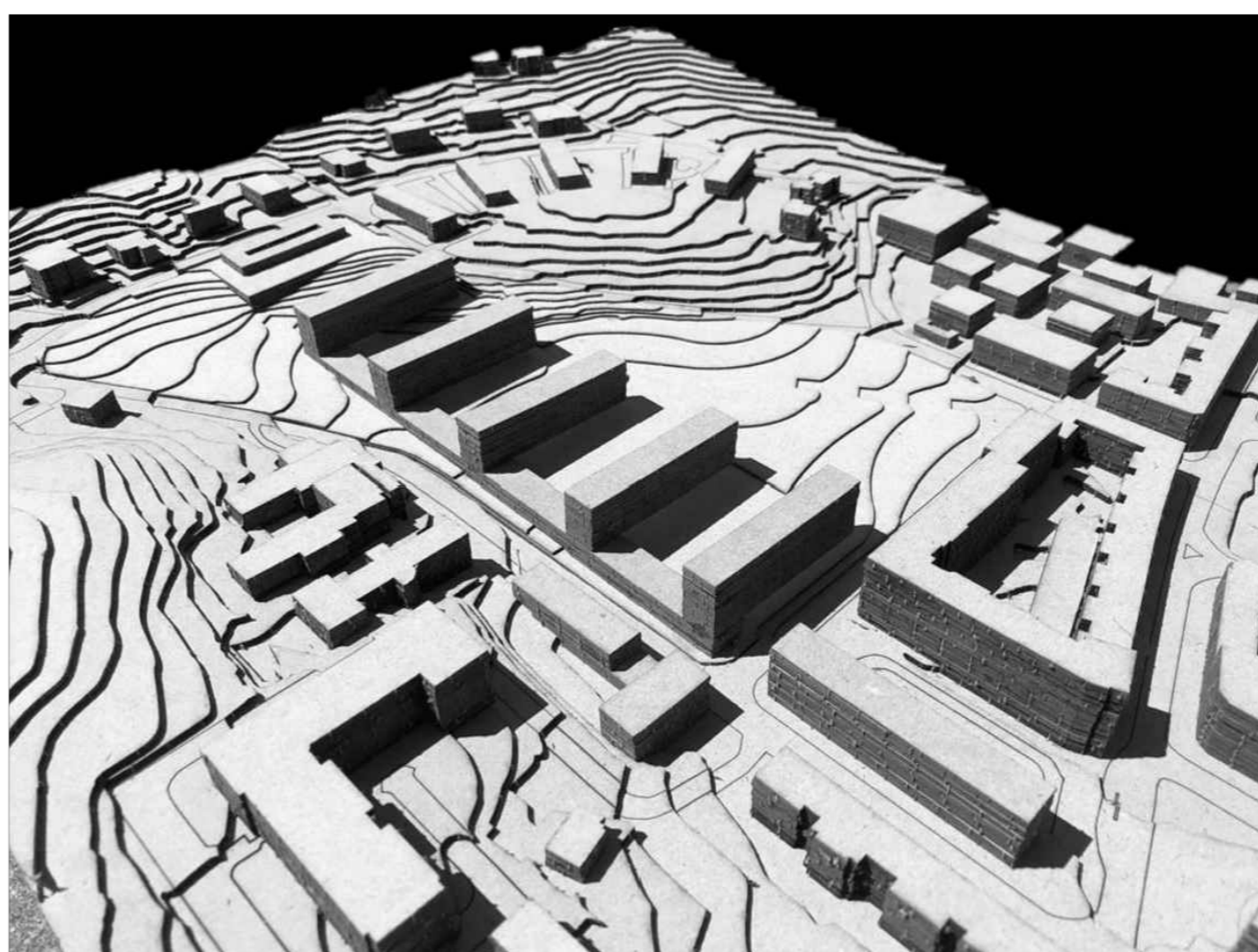
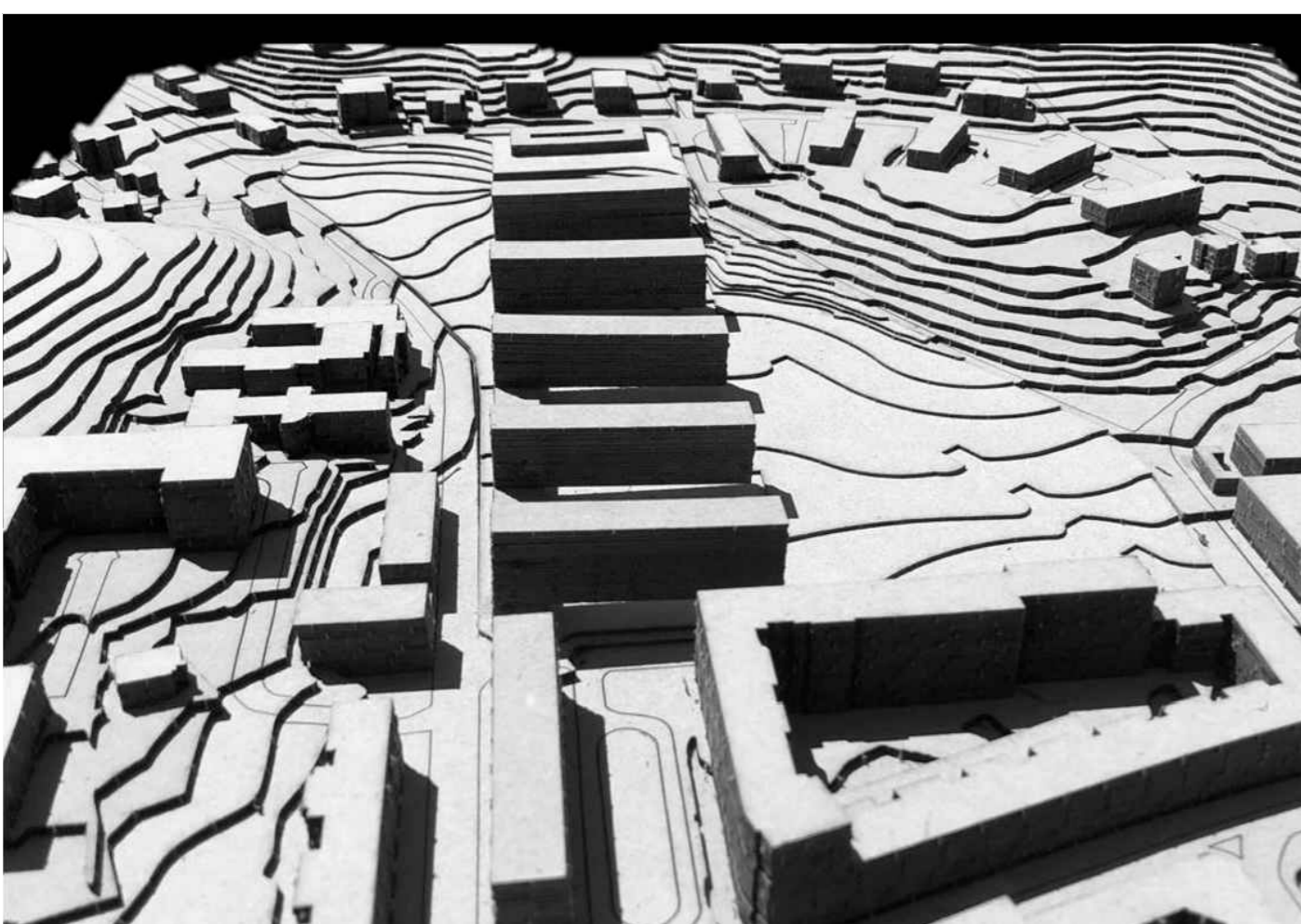
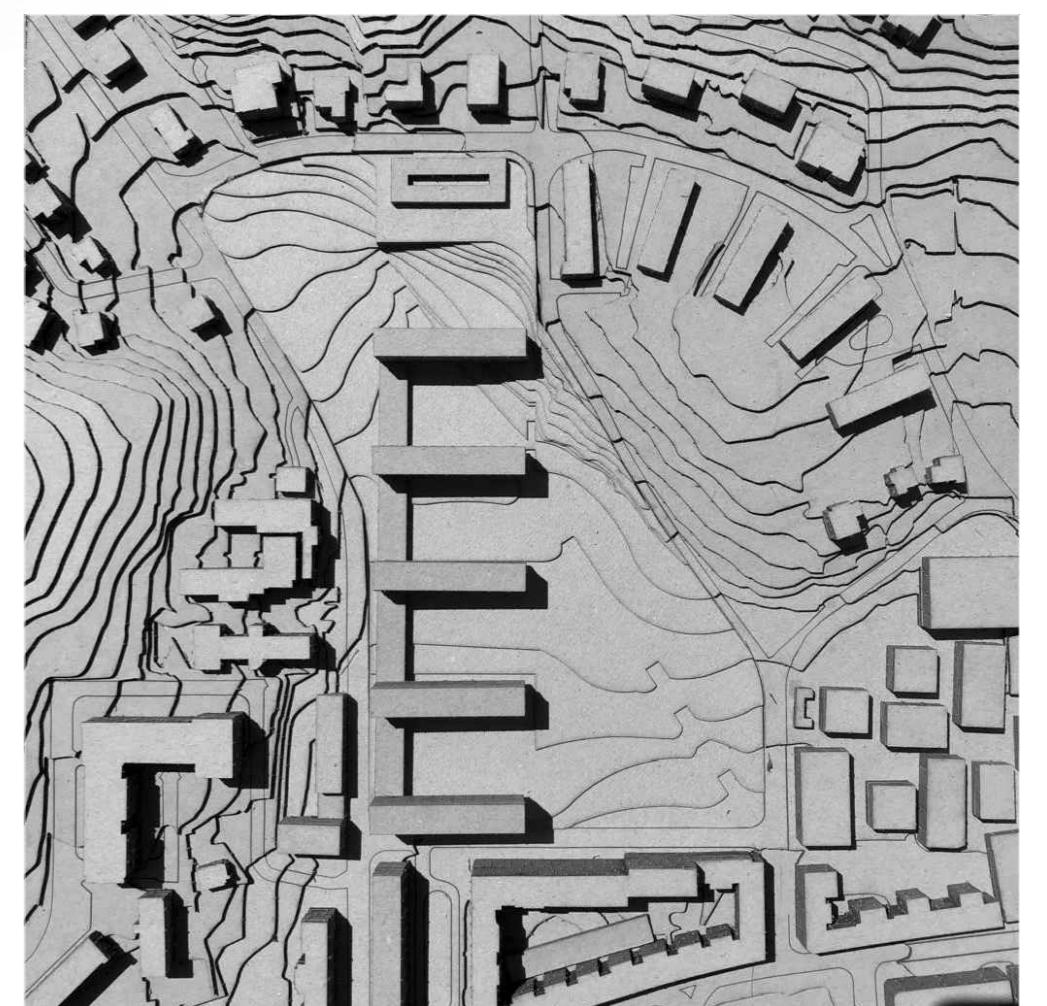
PERFIL Longitudinal



PERFIL Transversal



PLANTA do Estacionamento

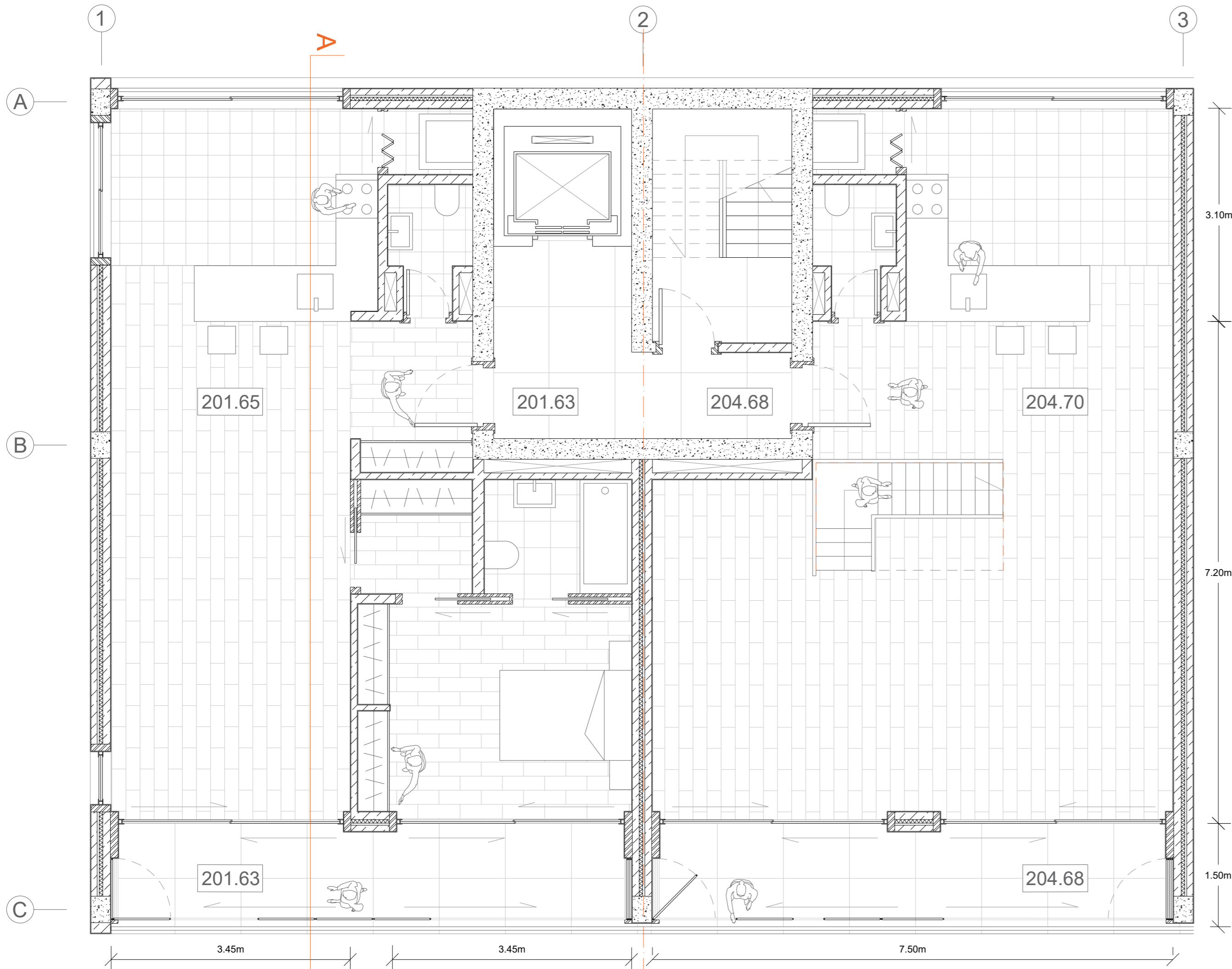


05.1

UNIDADES HABITACIONAIS PORTELA

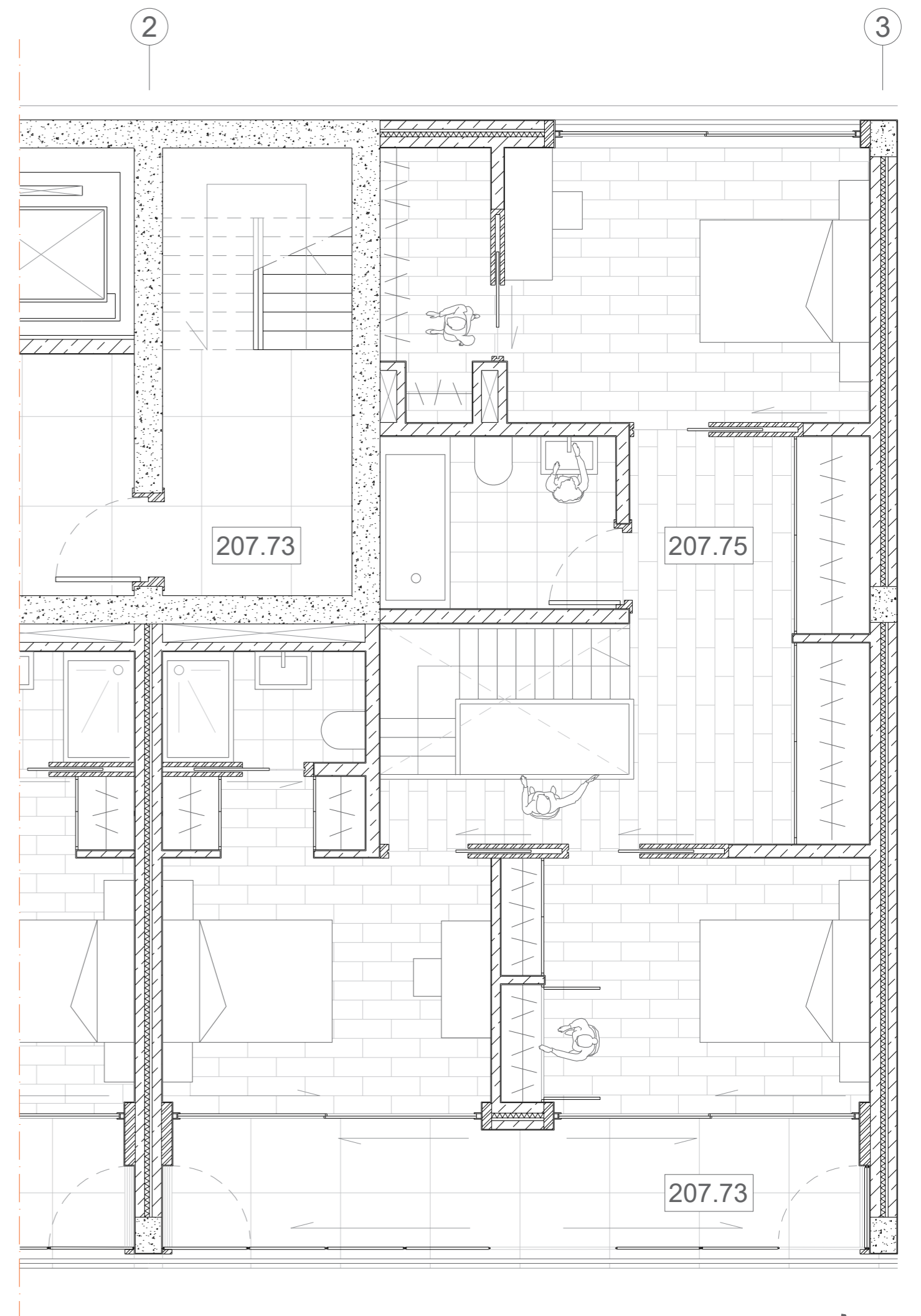
Plantas Apartamentos | Alçado
 esc. 1/50
 Portela de Sintra . Sintra

Laboratório de Projecto III . MIARQ
 Turma A_Eng . 2020/2021
 Tiago Varrecoso . nº 20181141

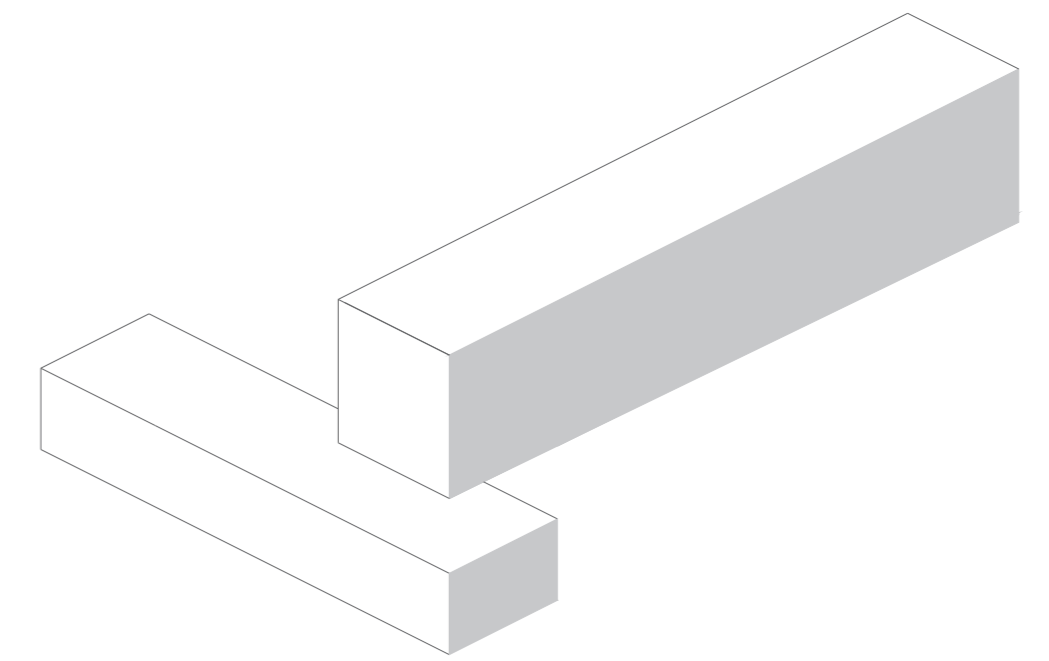


PLANTA Apartamento Pequeno

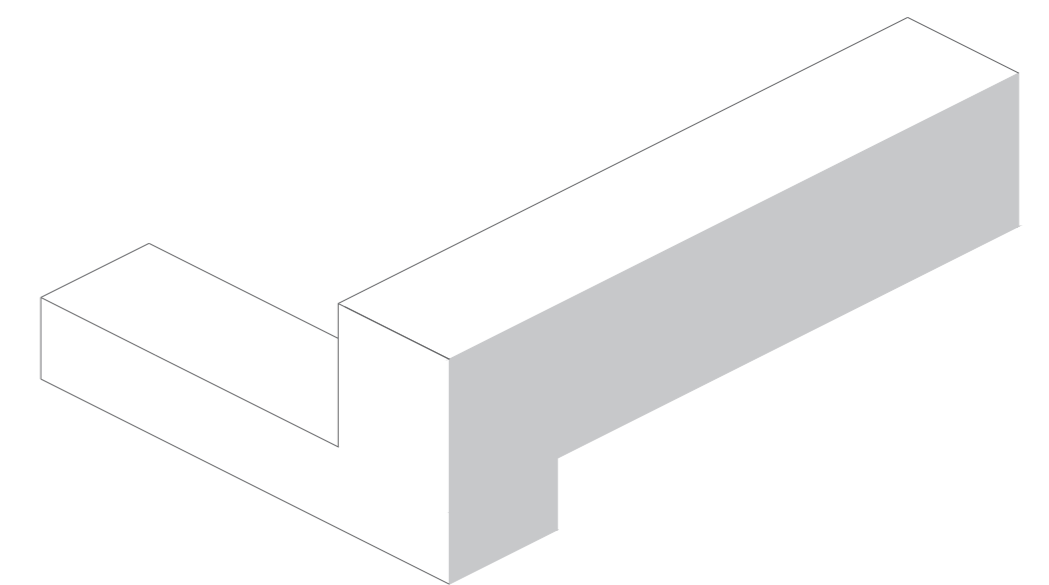
PLANTA Apartamento Grande Piso 0



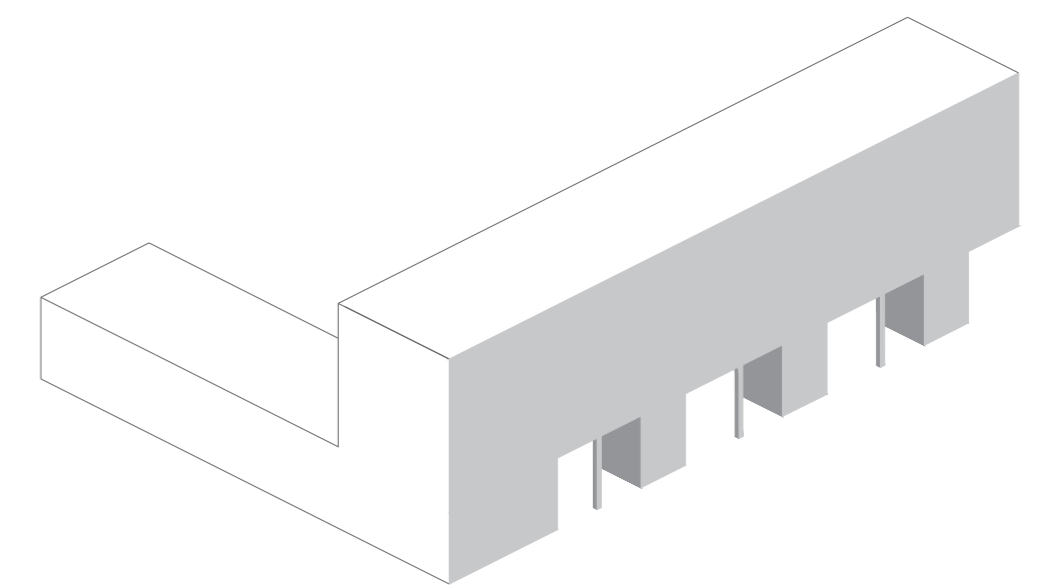
PLANTA Apartamento Grande Piso 1



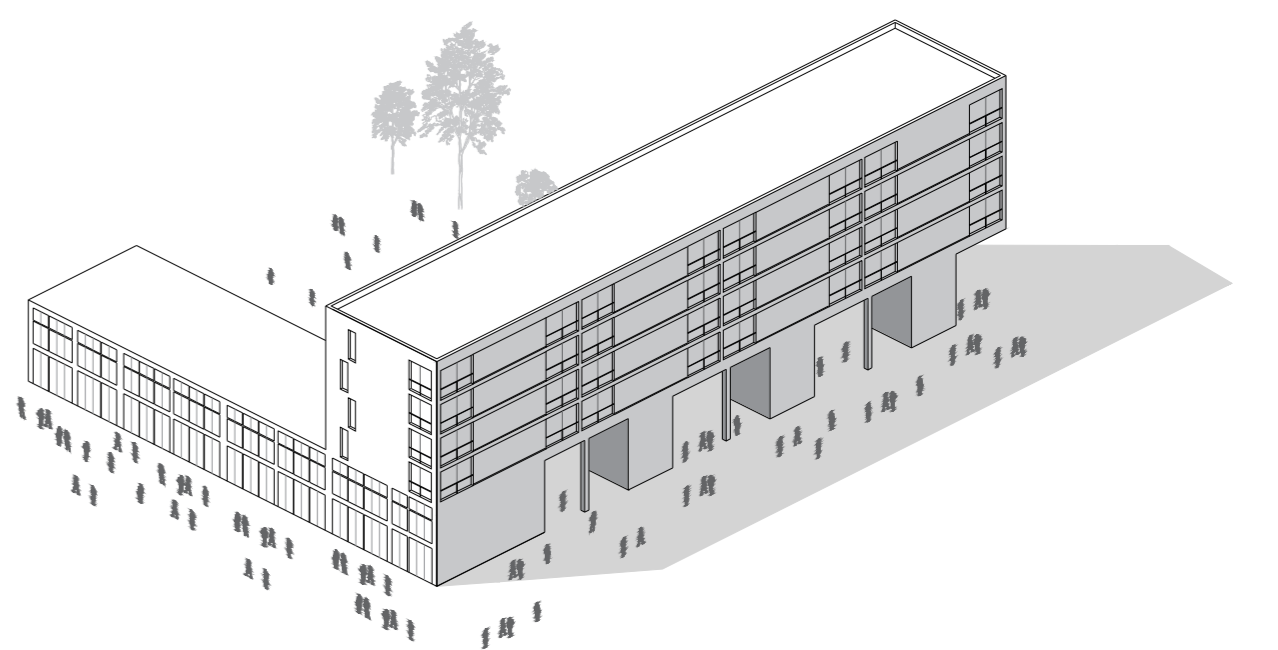
volumes



forma



estrutura e acessos



vãos e pormenores

05.2

UNIDADES HABITACIONAIS PORTELA

Corte
esc. 1/50
Portela de Sintra . Sintra

Laboratório de Projecto III . MIARQ
Turma A_Eng . 2020/2021
Tiago Varrecoso . nº 20181141

