

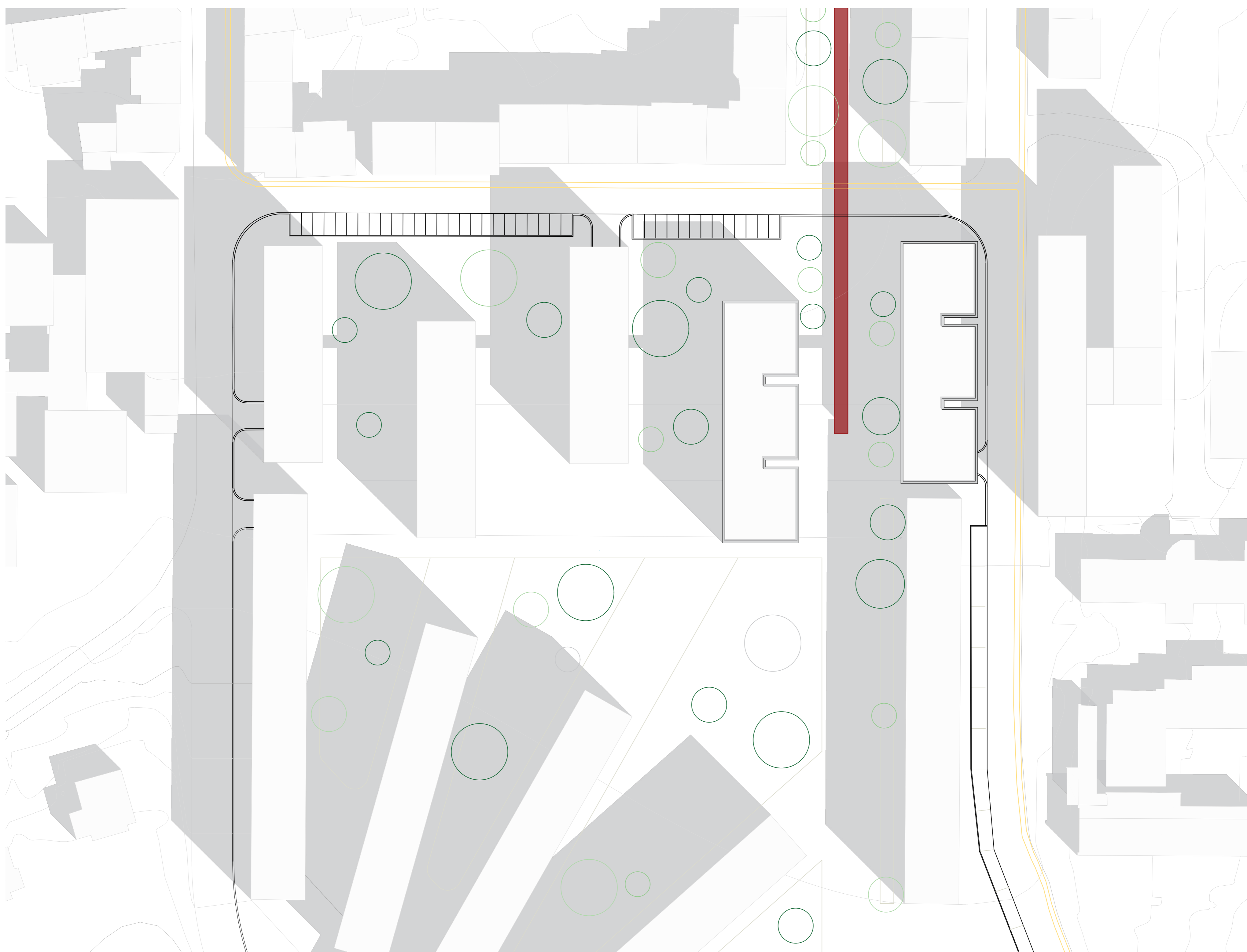
01 Conjunto Habitacional coletivo

UM SENTIDO COLECTIVO DO HABITAR

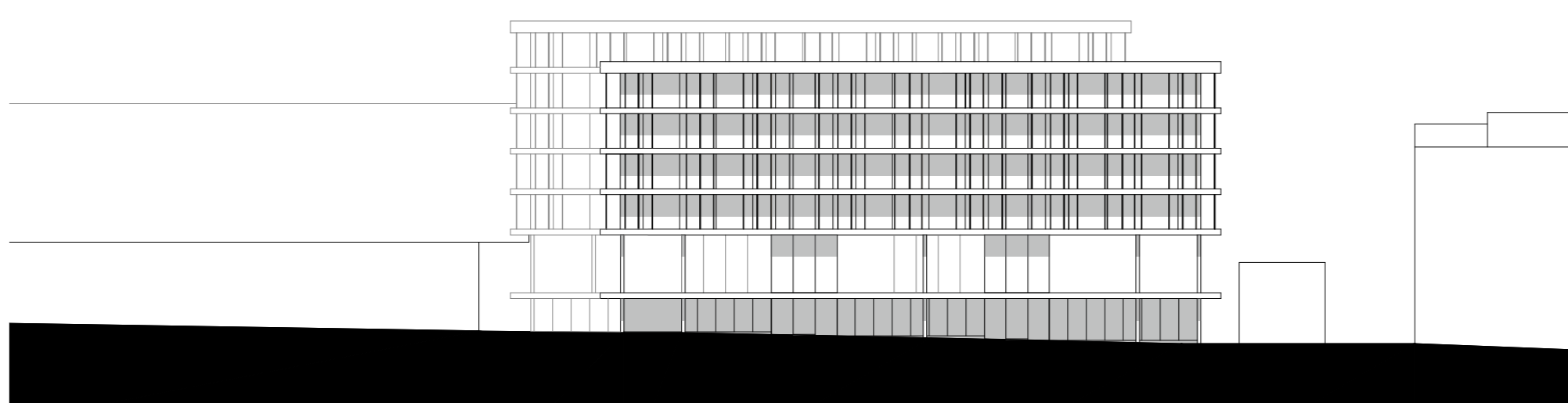
esc. 1/500

Portela de Sintra . Sintra

Laboratório de Projecto III
MIARQ Turma H 2020/2021
Margarida Alexandre nº 20181133



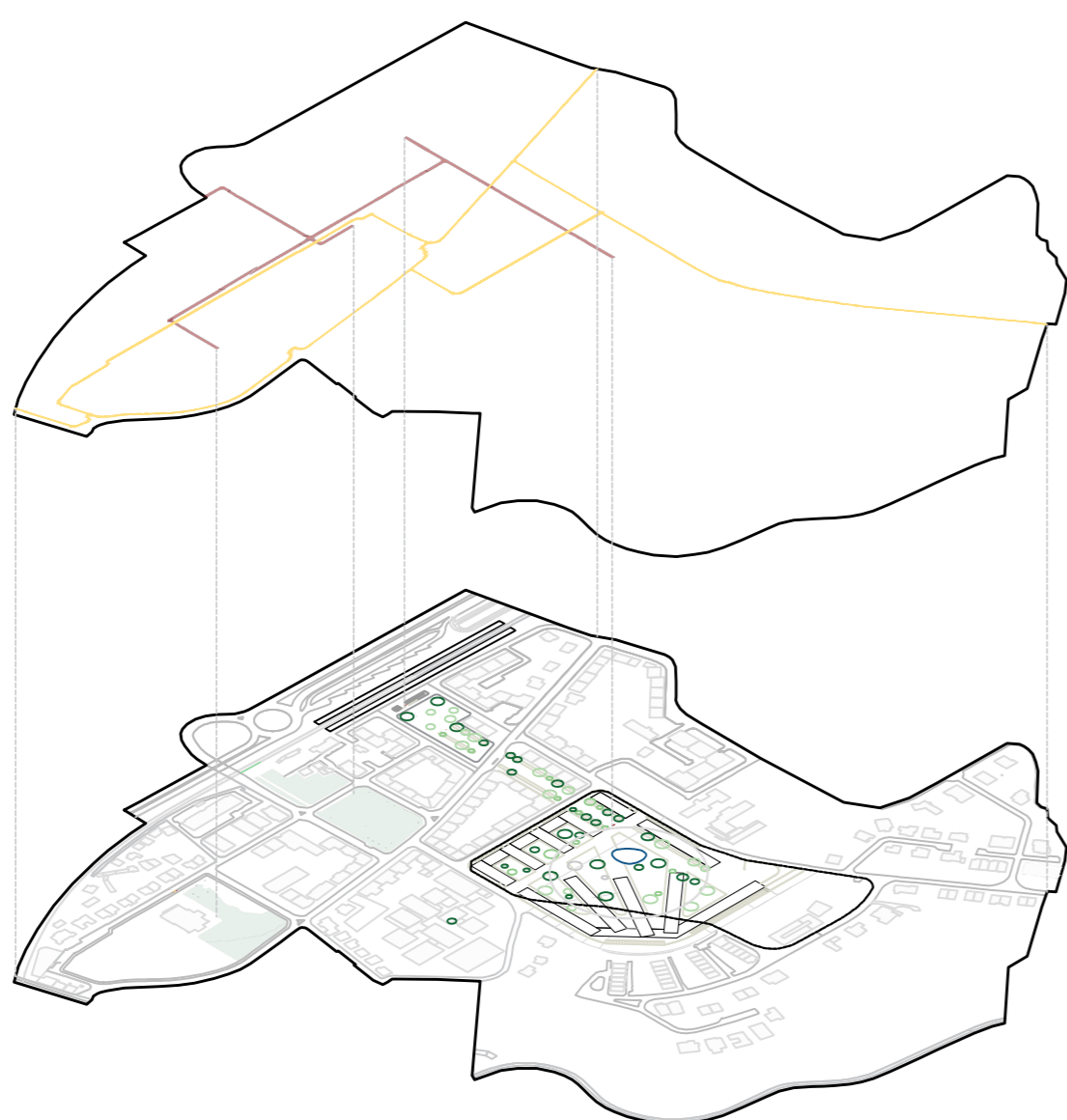
ESC. 1/500 | PLANTA GERAL DE ENQUADRAMENTO



PERFIL AA'



PERFIL BB'



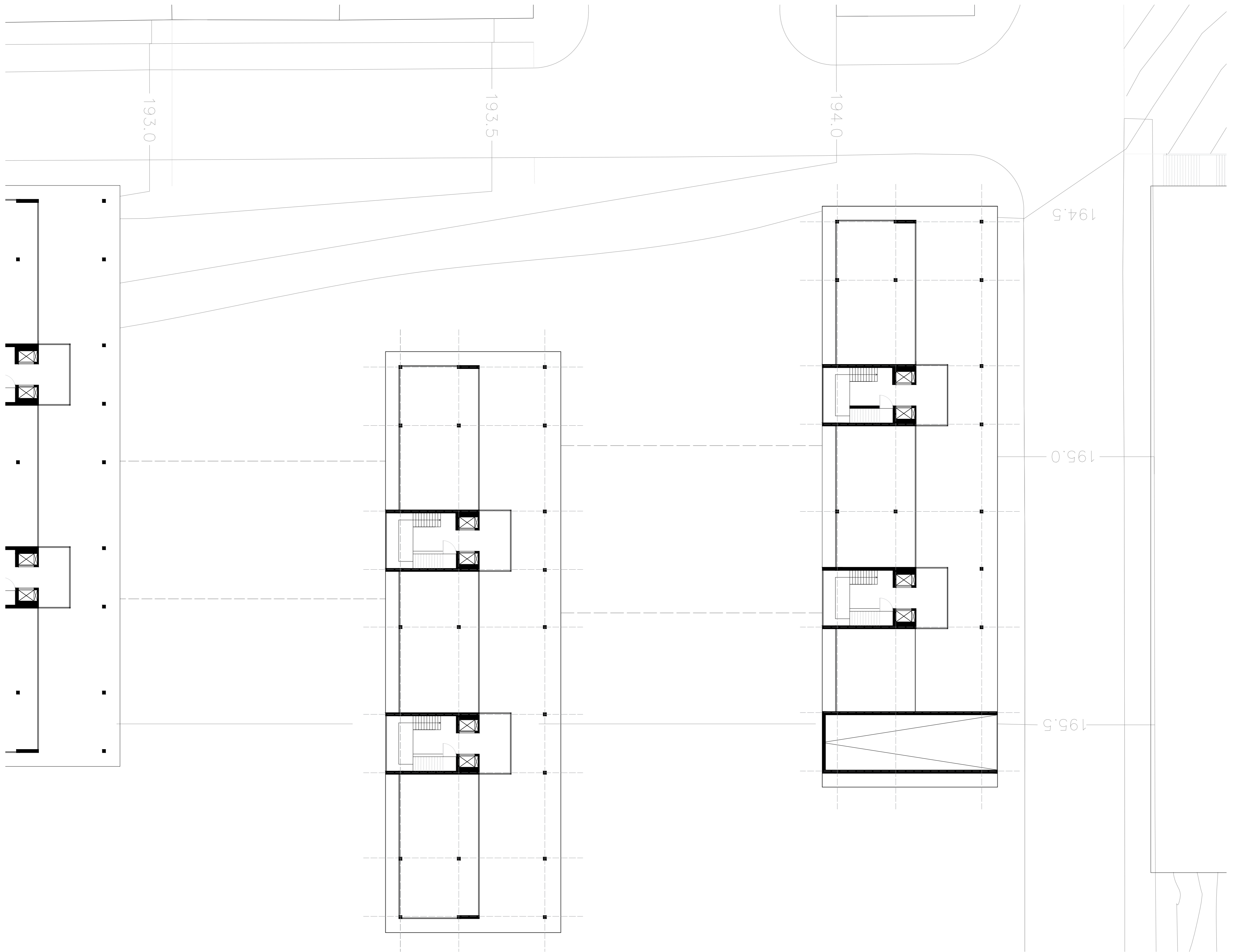
02 Conjunto Habitacional coletivo

UM SENTIDO COLECTIVO DO HABITAR

esc. 1/200

Portela de Sintra . Sintra

Laboratório de Projecto III
MIARQ Turma H 2020/2021
Margarida Alexandre nº 20181133



ESC. 1/200 | PLANTA PISO TÉRREO



ALÇADO Rua Dr. Félix Alves Pereira



ALÇADO Rua José Bento Costa

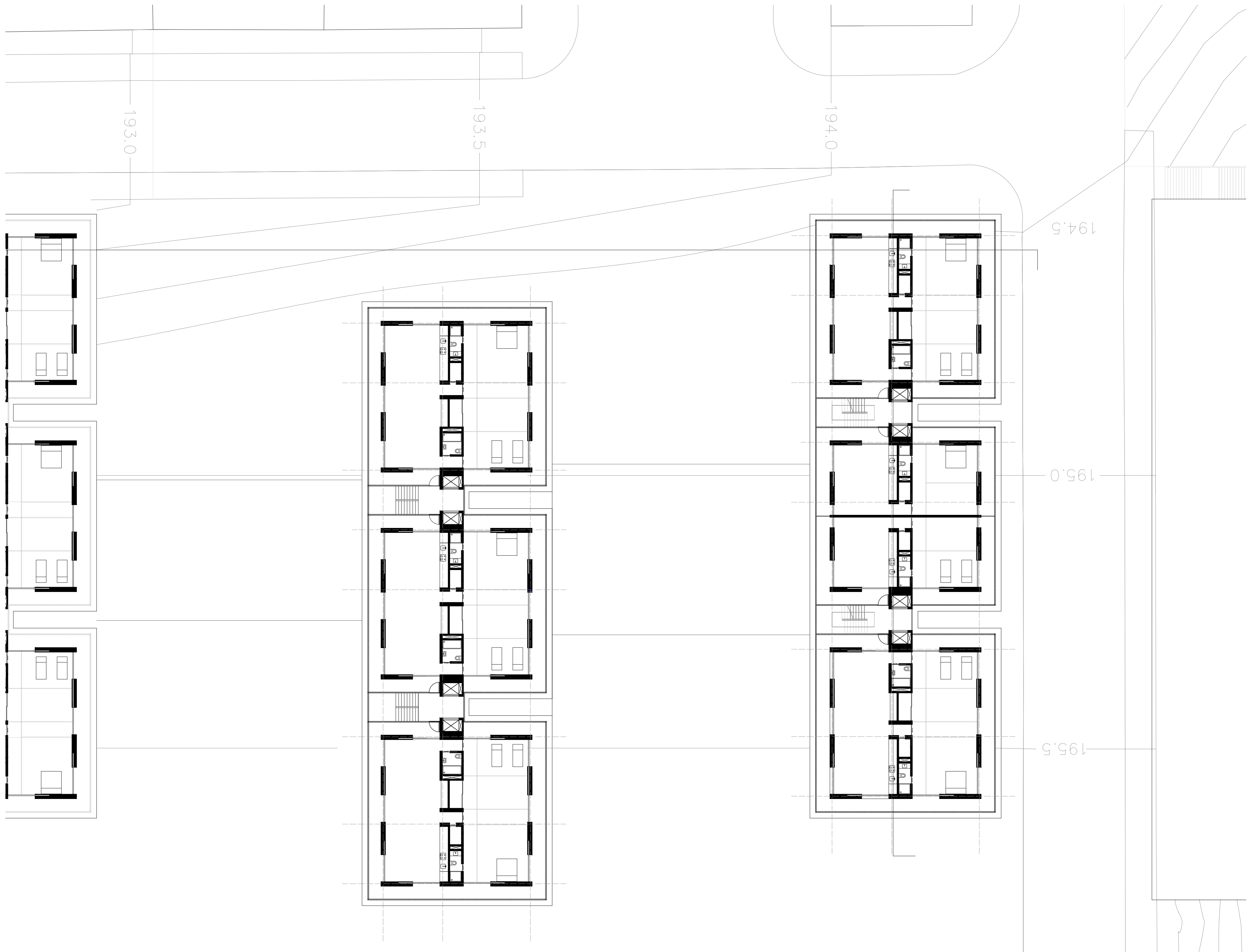
03 Conjunto Habitacional coletivo

UM SENTIDO COLECTIVO DO HABITAR

esc. 1/200

Portela de Sintra . Sintra

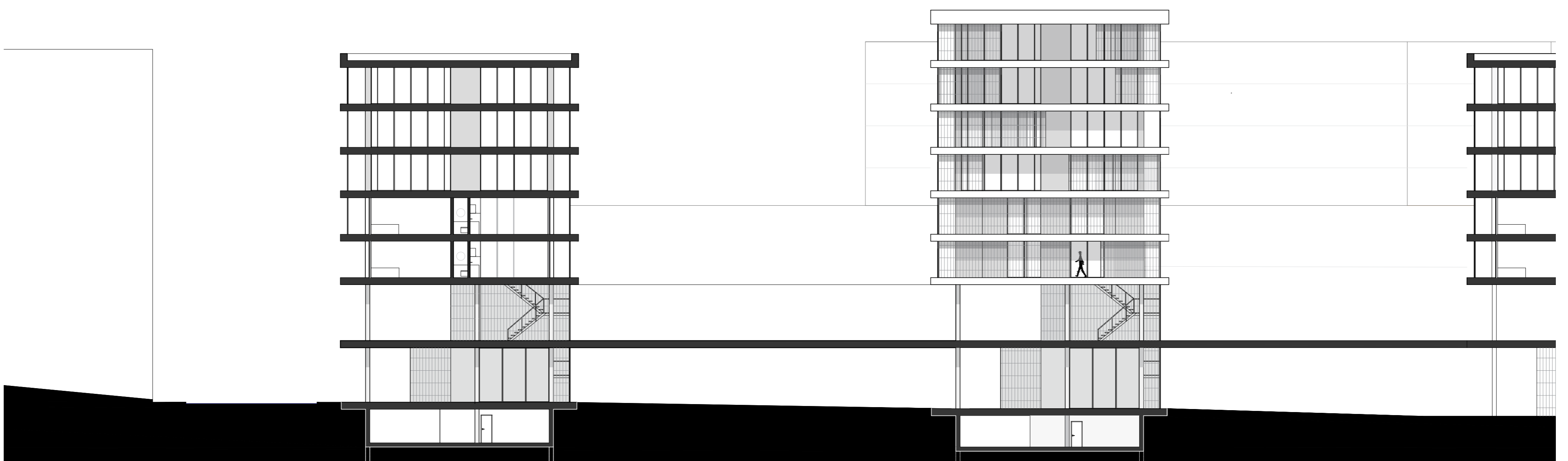
Laboratório de Projecto III
MIARQ Turma H 2020/2021
Margarida Alexandre nº 20181133



ESC. 1/200 | PLANTA PISO TIPO



PERFIL LONGITUDINAL



PERFIL TRANSVERSAL

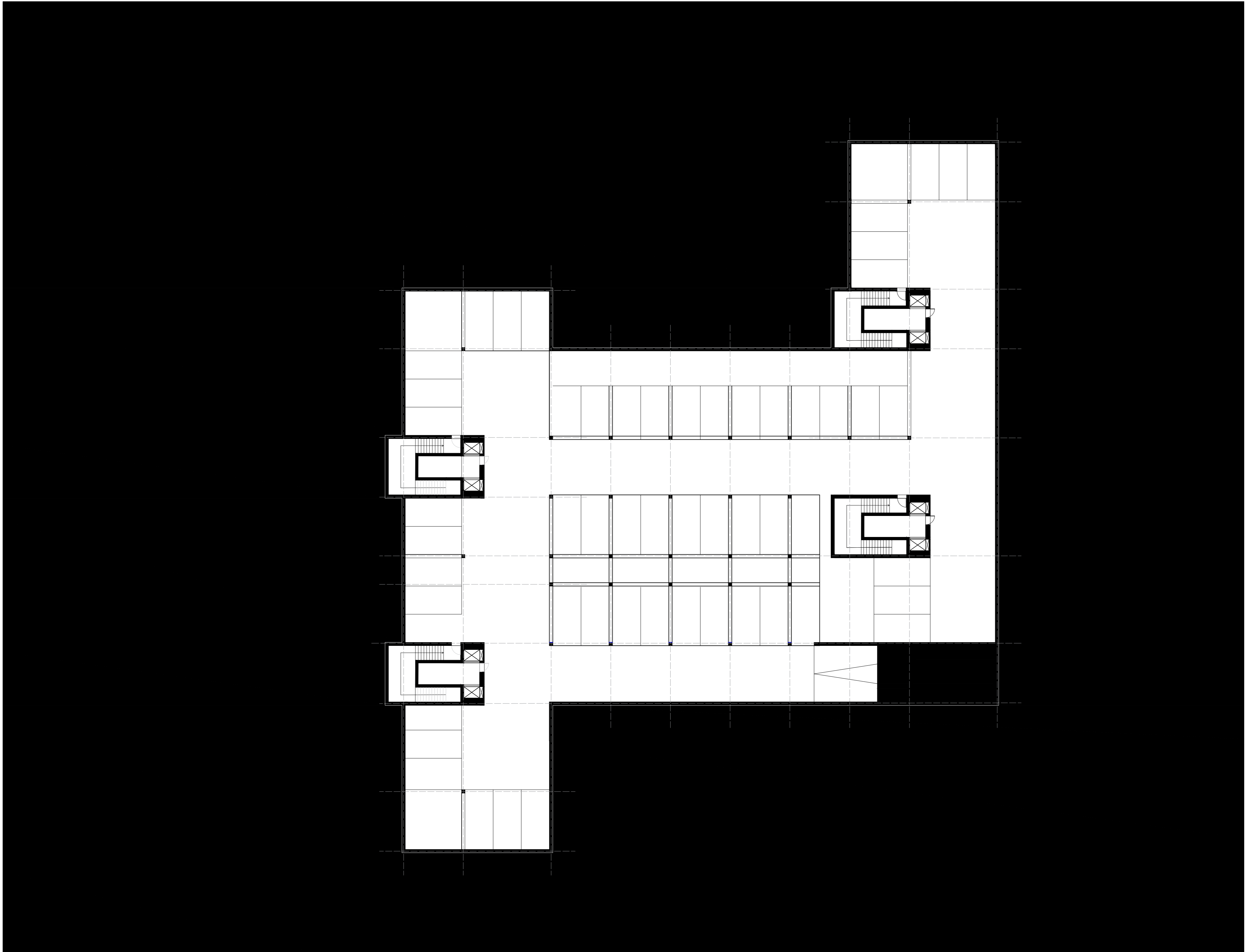
04 Conjunto Habitacional coletivo

UM SENTIDO COLECTIVO DO HABITAR

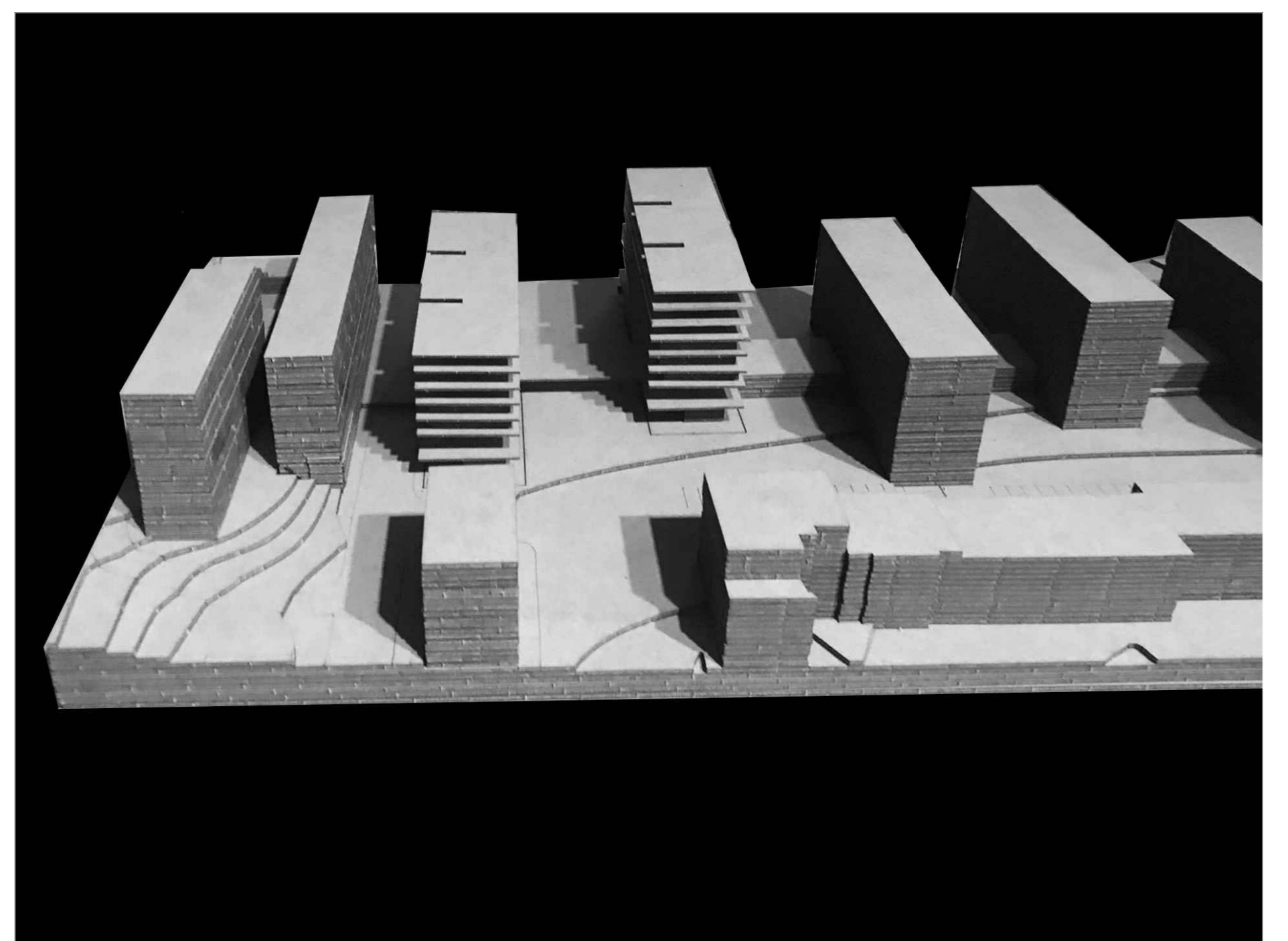
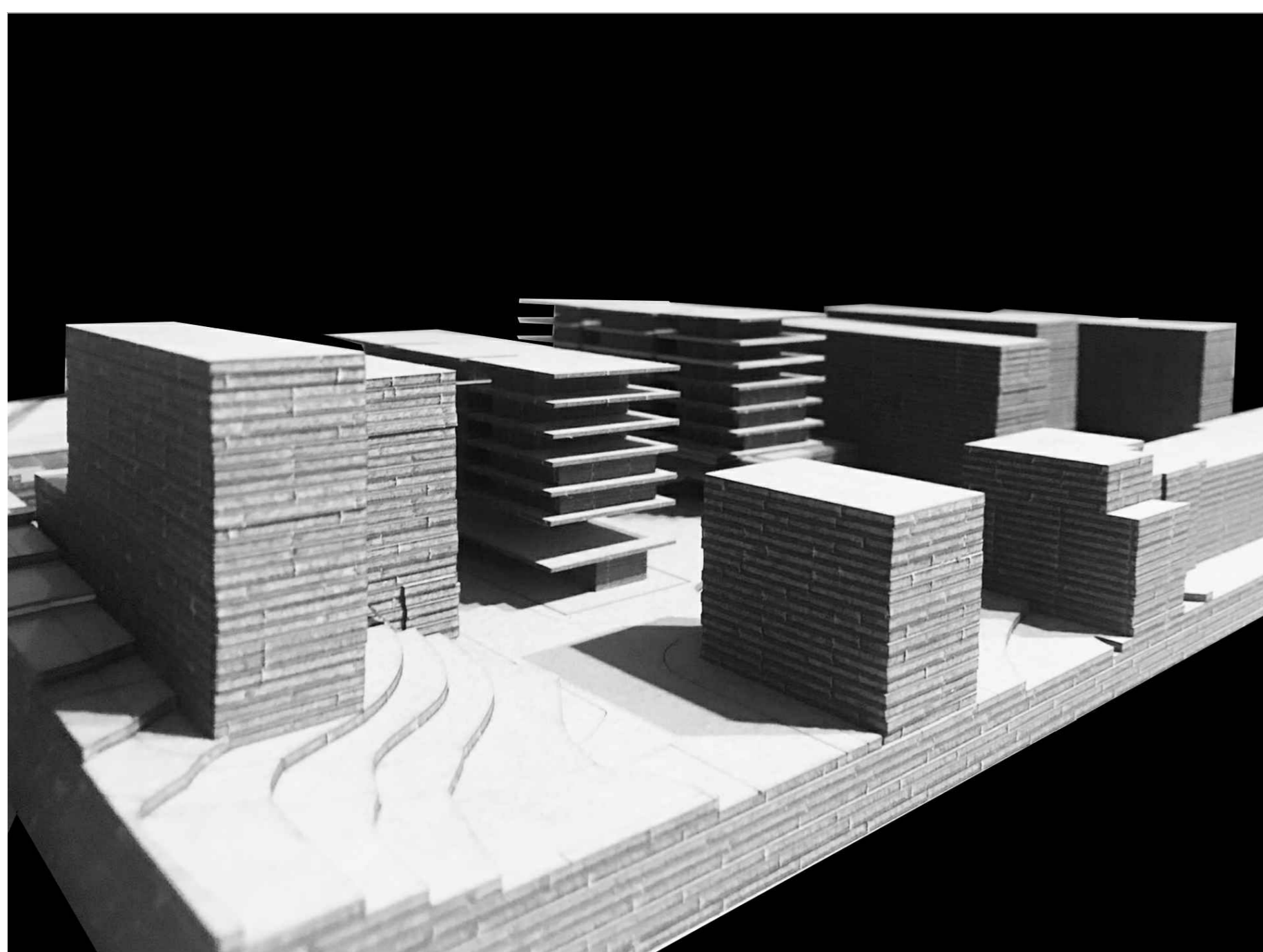
esc. 1/200

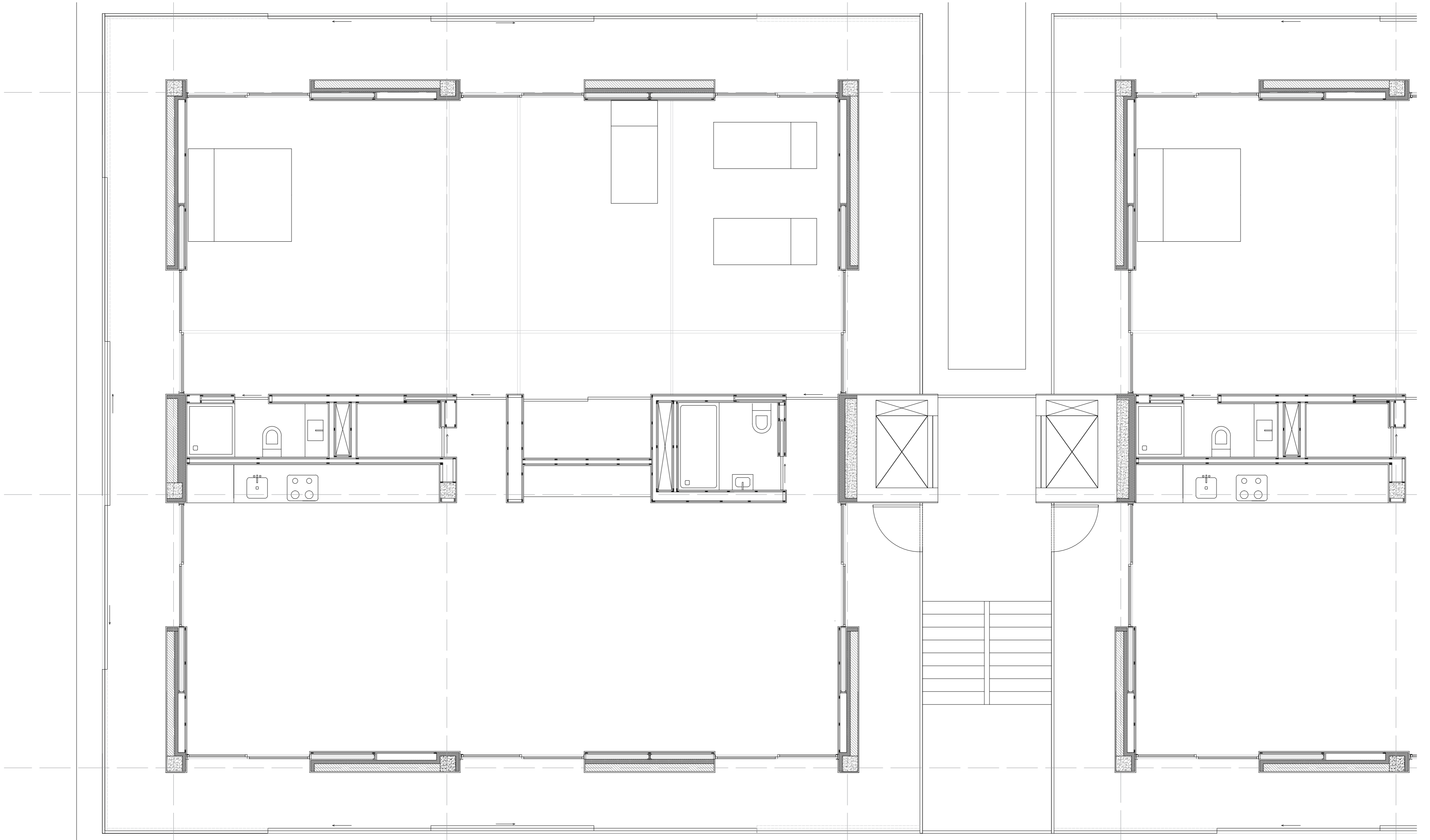
Portela de Sintra . Sintra

Laboratório de Projecto III
MIARQ Turma H 2020/2021
Margarida Alexandre nº 20181133

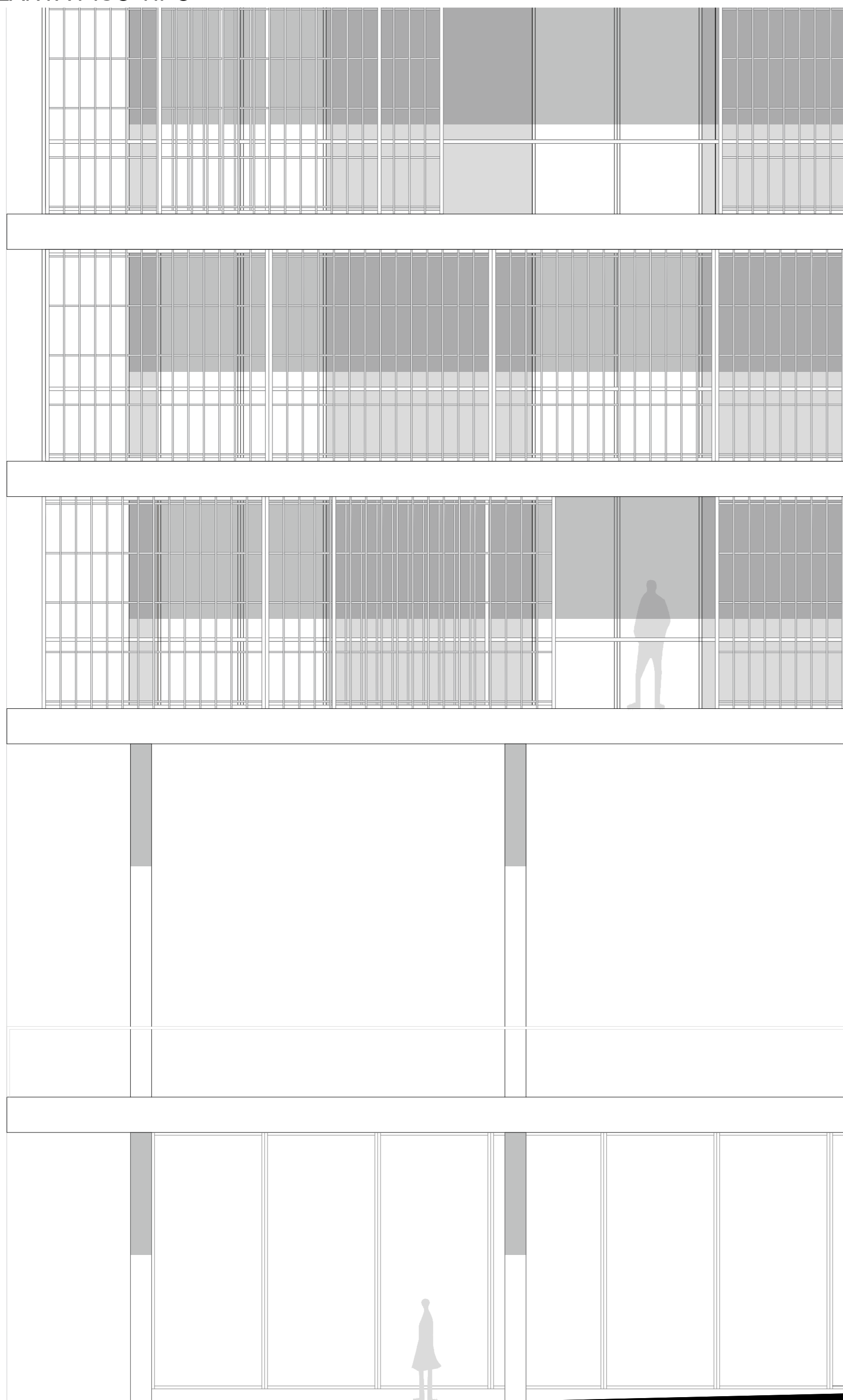


ESC. 1/200 | PLANTA DO ESTACIONAMENTO

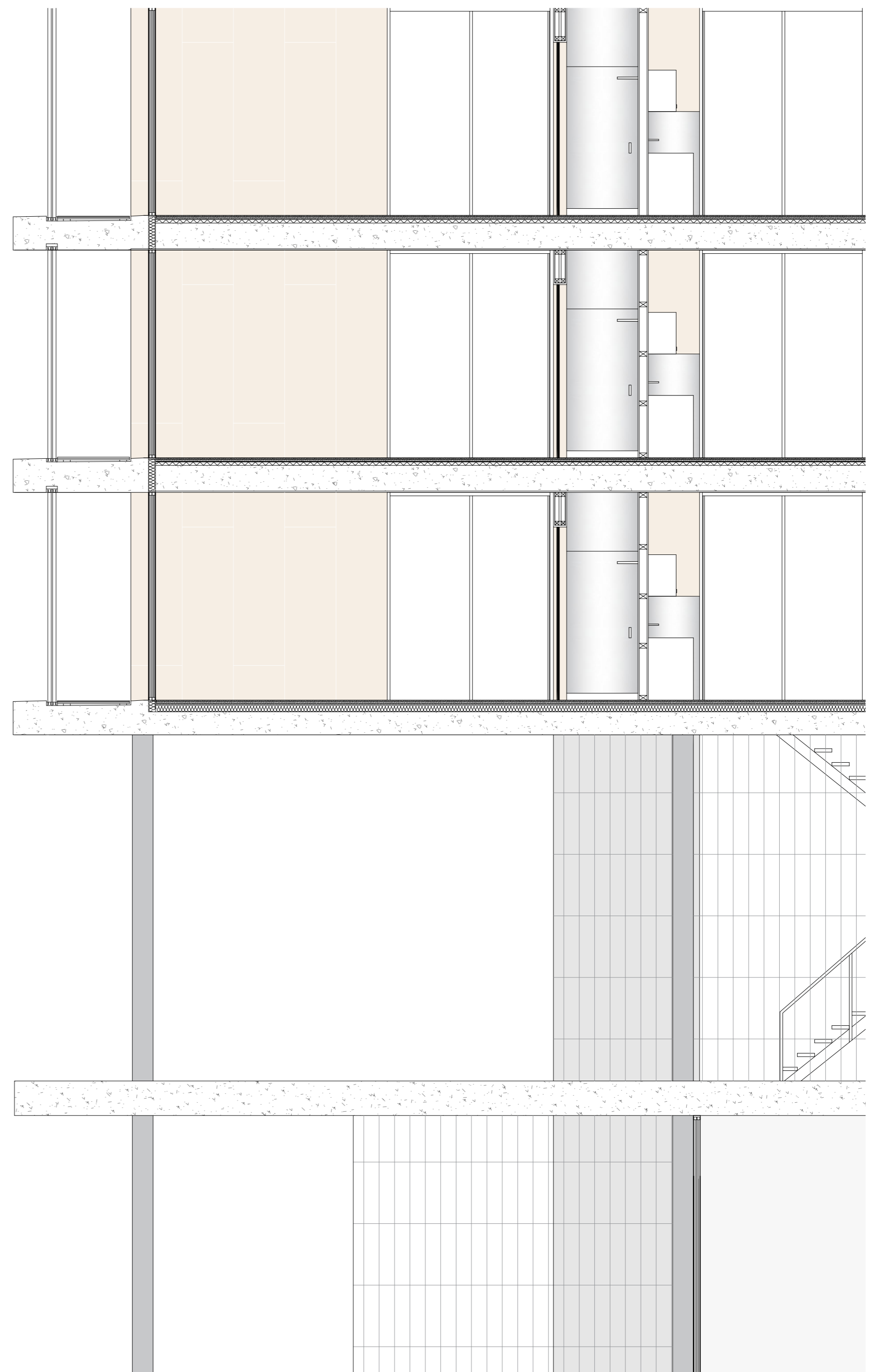




ESC. 1/50 | PLANTA PISO TIPO



ALÇADO | ESC. 1:50



CORTE | ESC. 1:50