

Laboratório de Arquitectura I

1º semestre

Beatriz Magalhães

[Exercício III]

Casa

Pavilhão

contexto

objecto

espaço

Análise

Narrativa descritiva

Processo

[Exercício II]

Casas | Fase 1

Casas | Fase 2

[Exercício I]

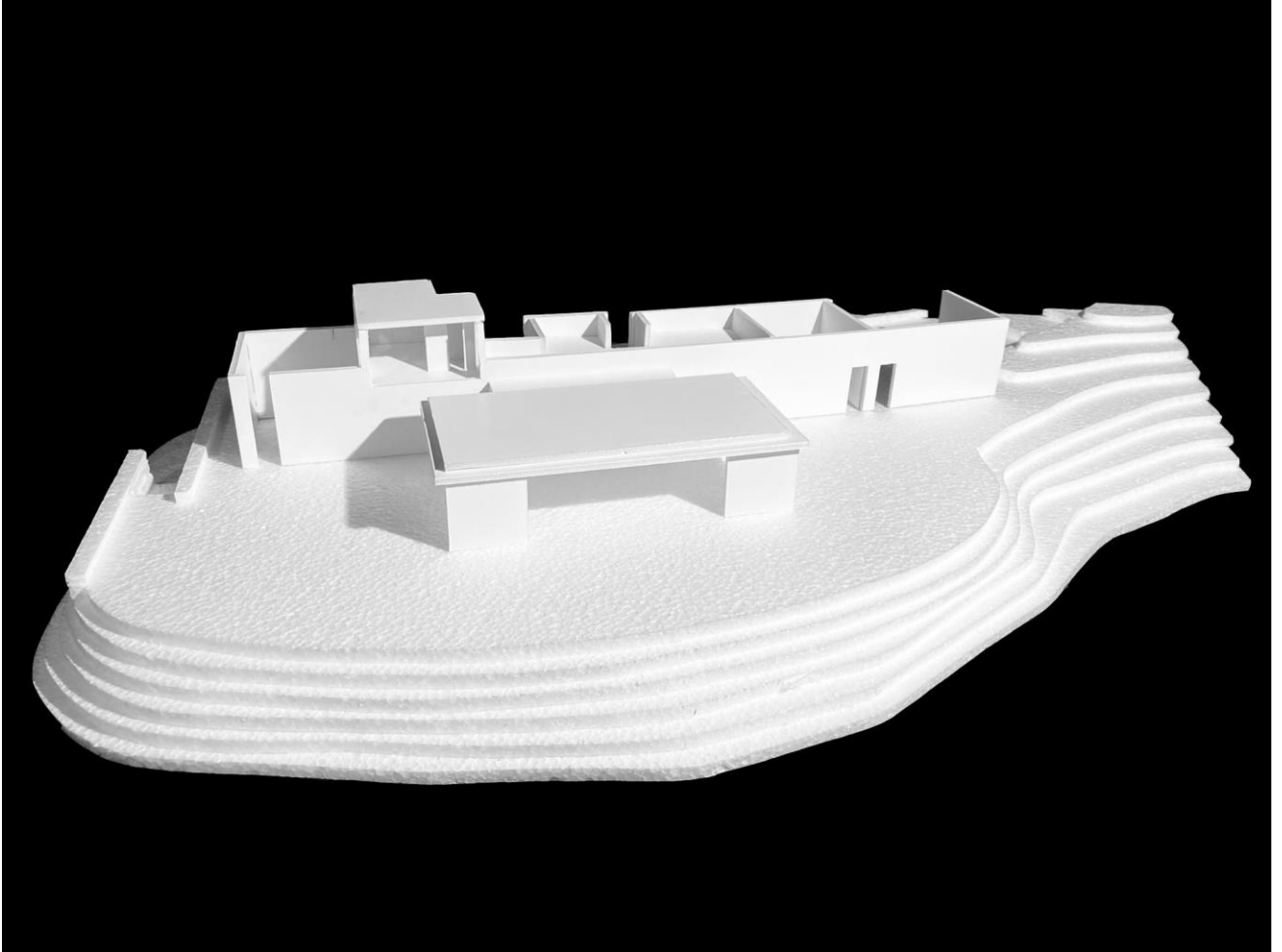
Três fotografias

O Pavilhão: um espaço para pensar

Caso de estudo “Casa em Melides” de José Neves

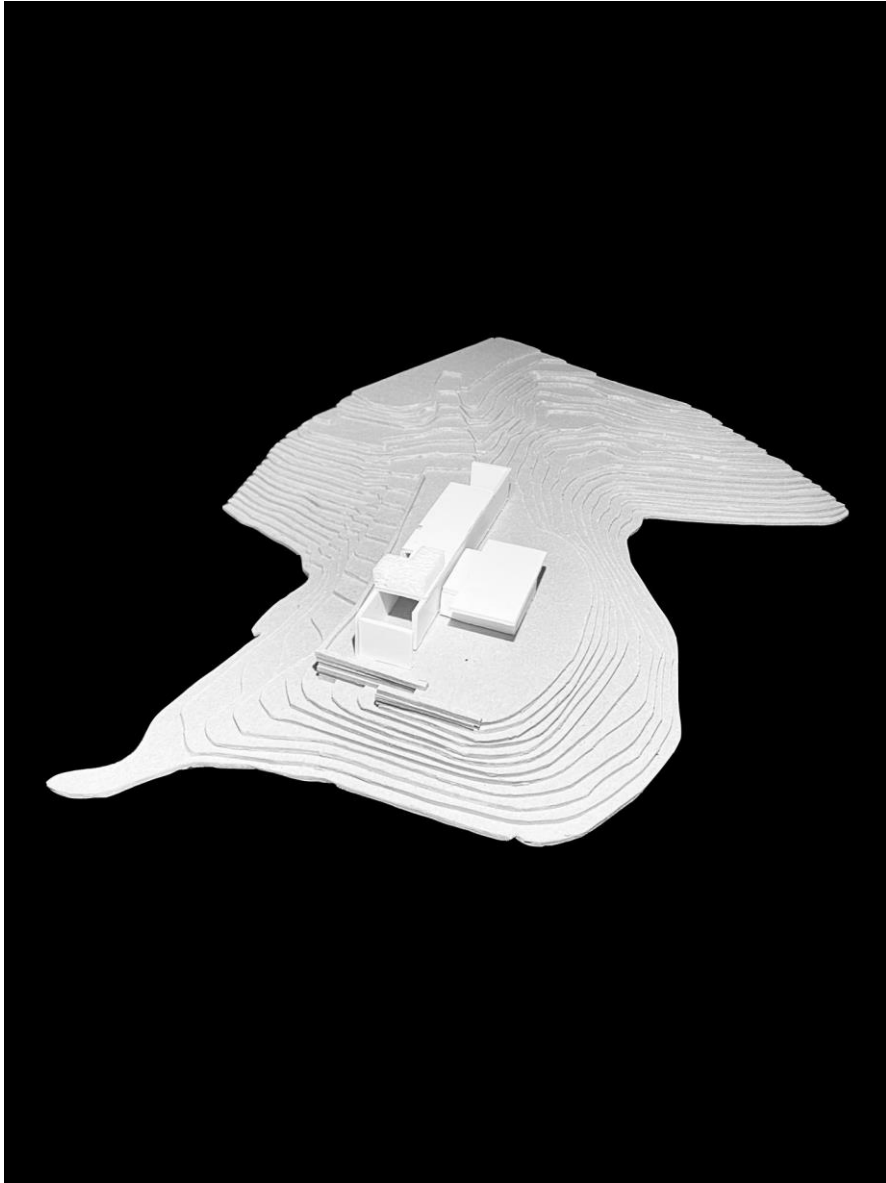
Casa

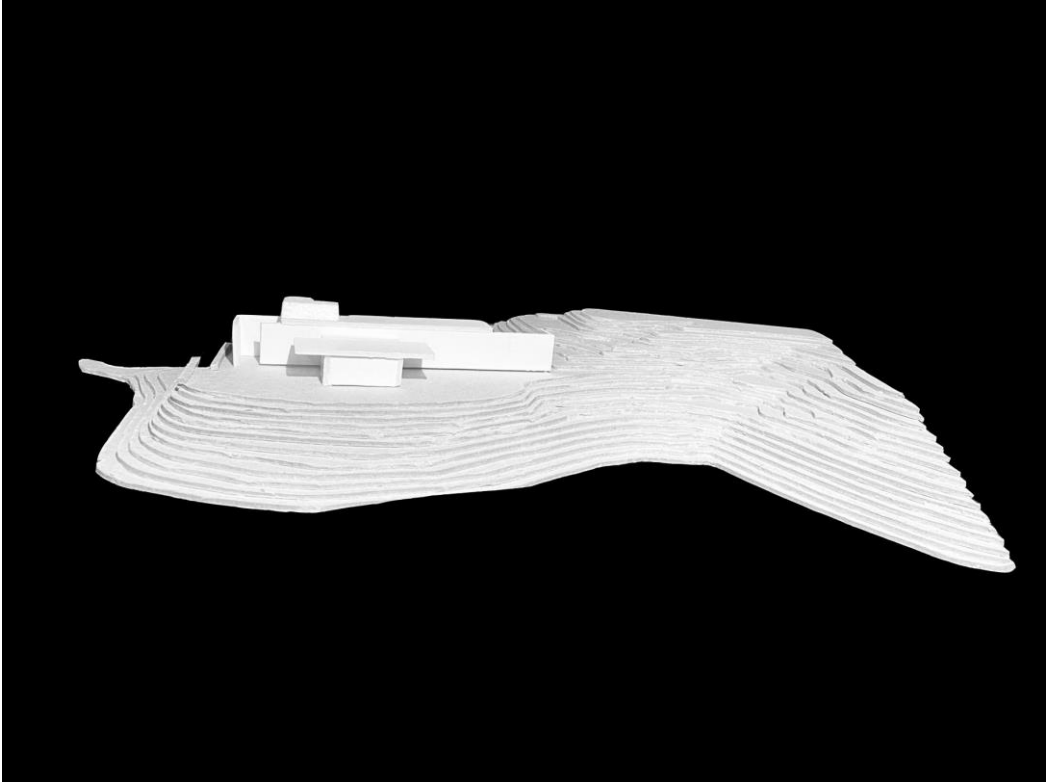
Casa de Melides . José Neves

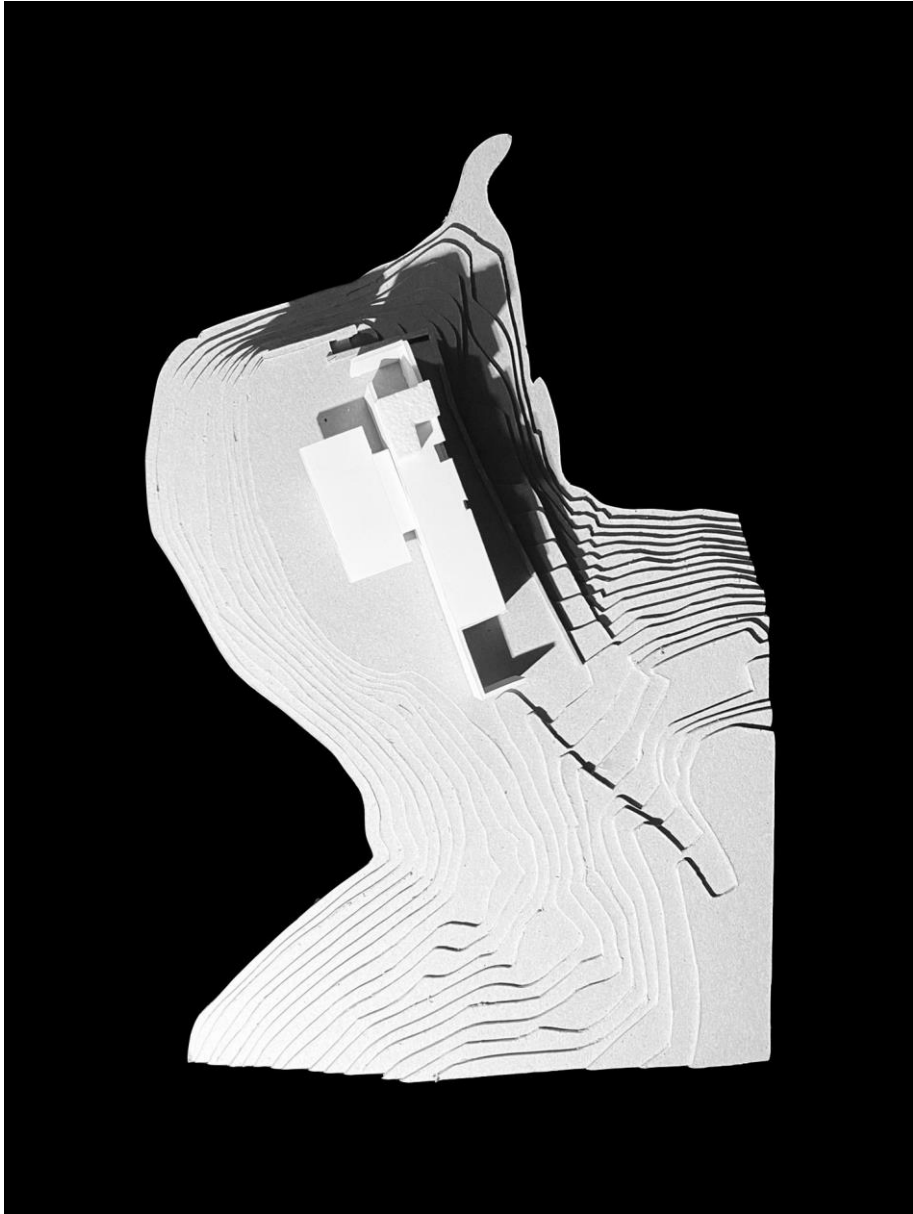


Pavilhão

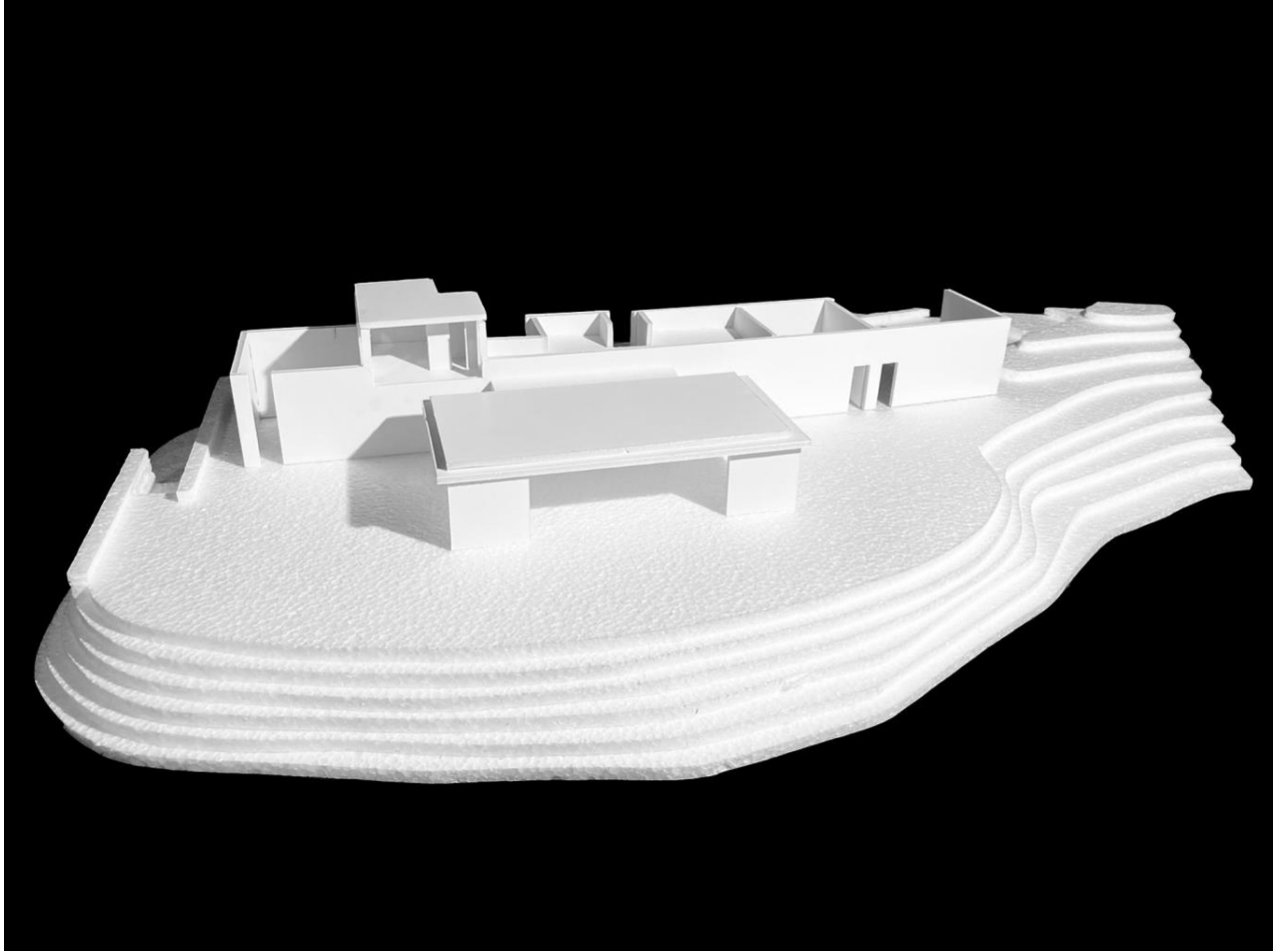
contexto

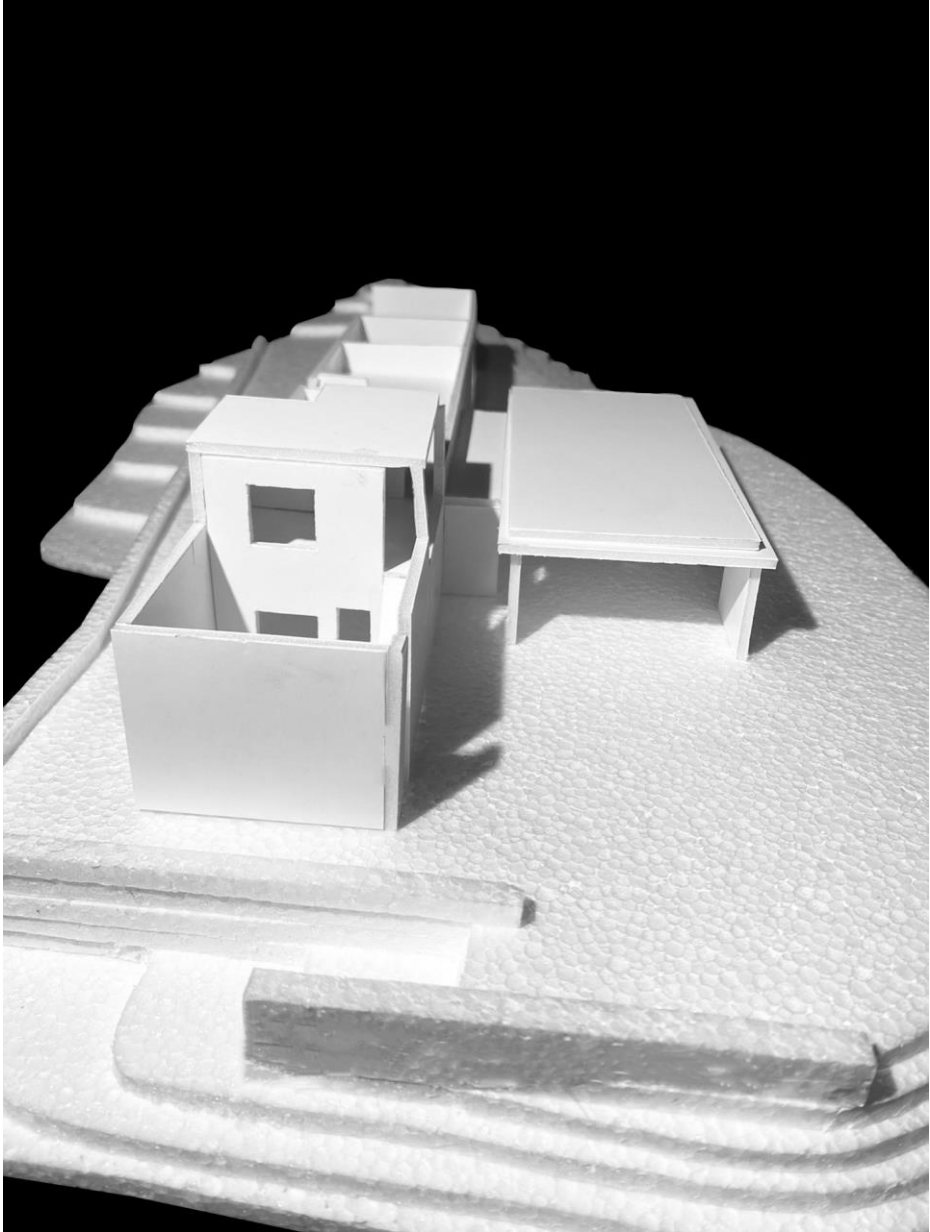


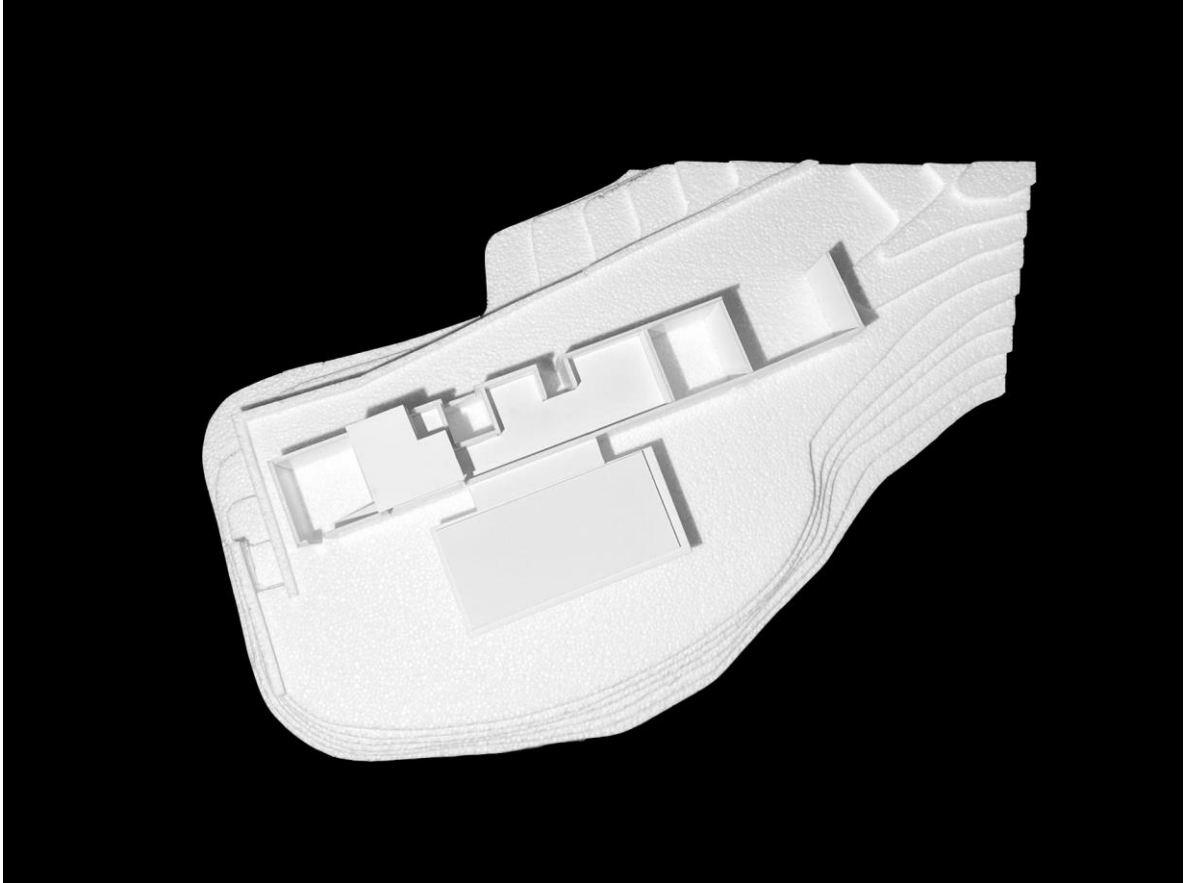


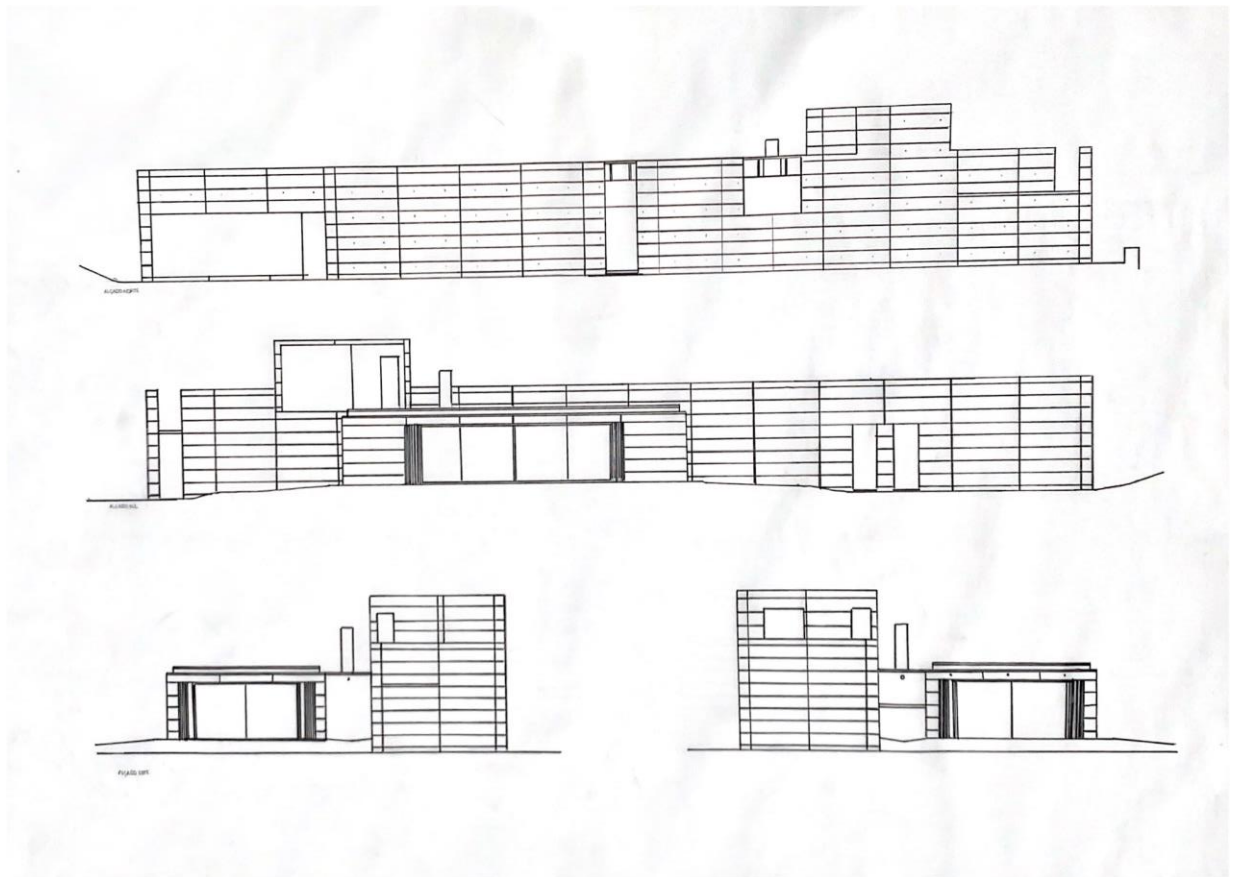


objecto





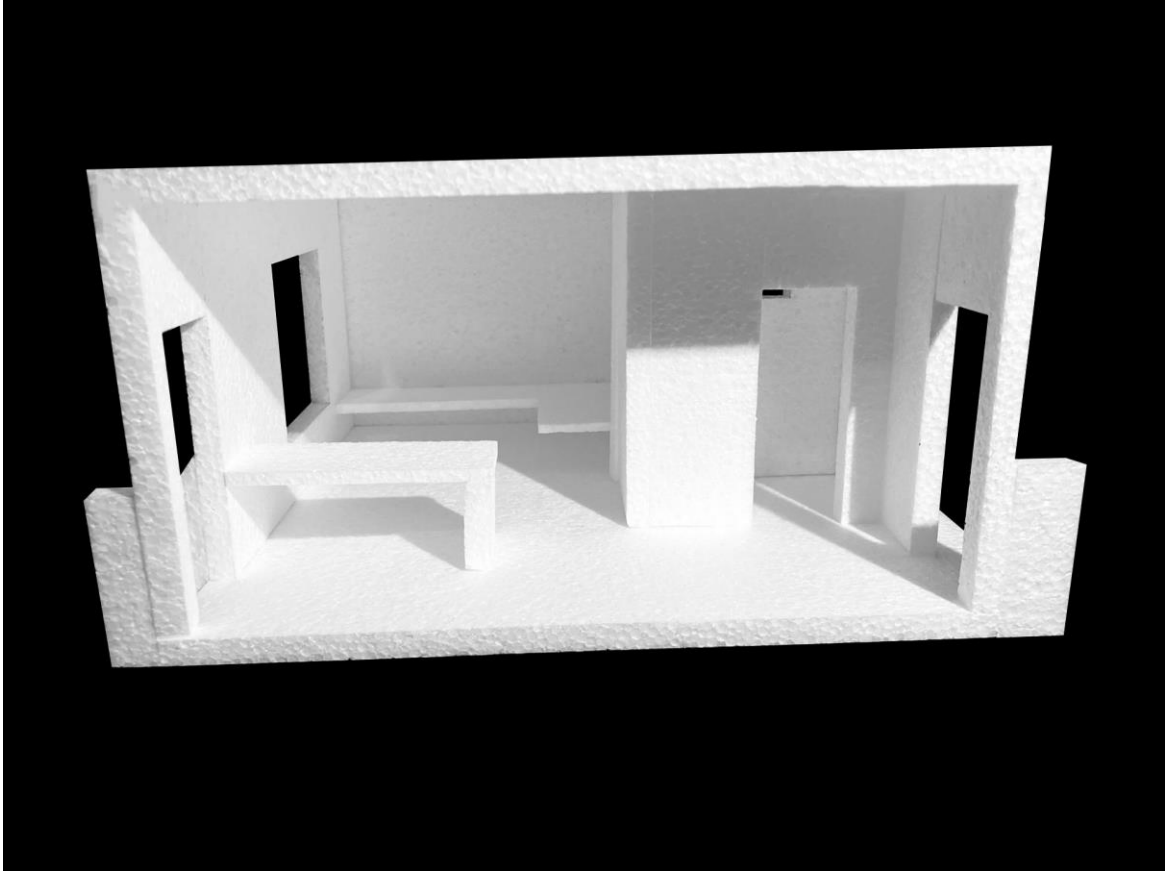


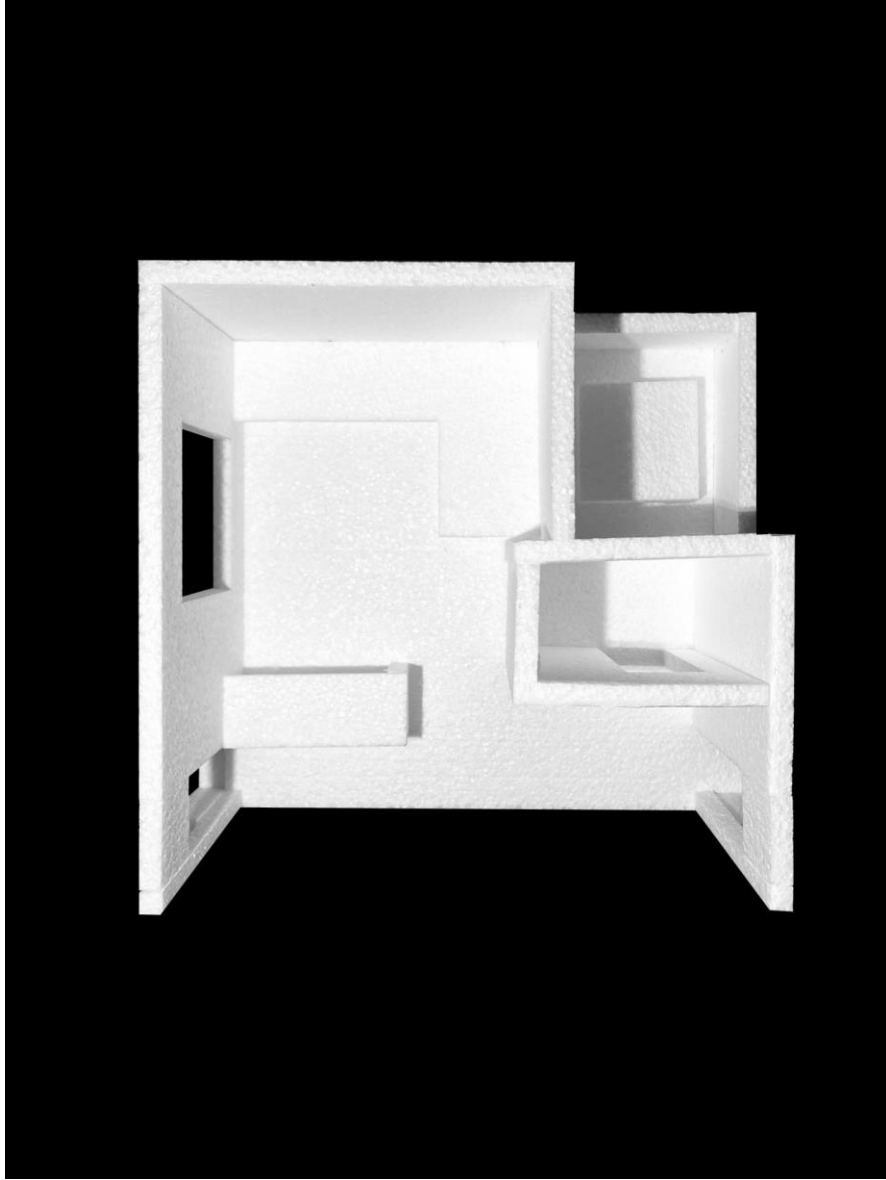


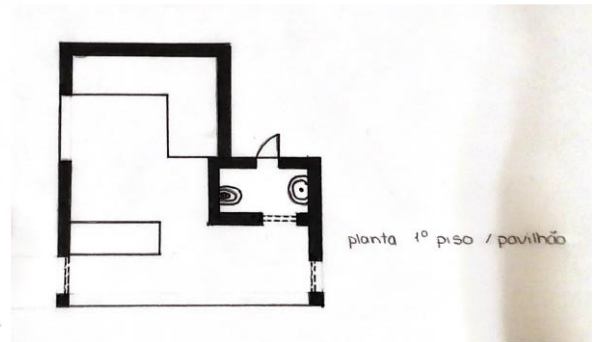
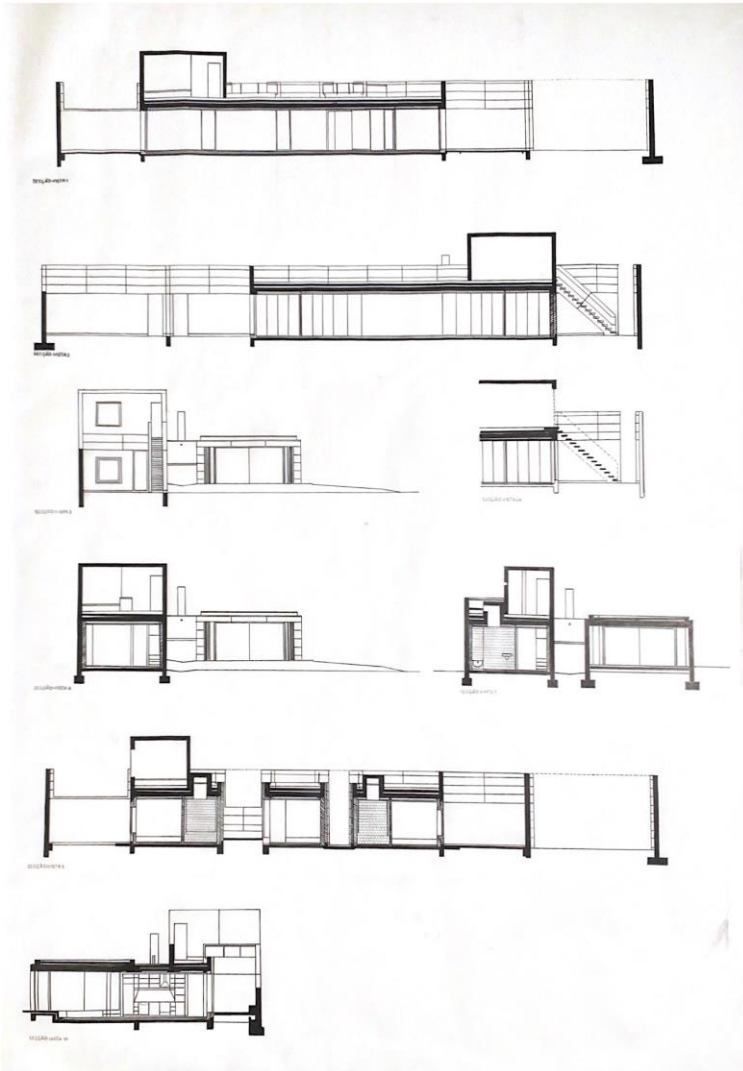
planta(s) e corte e alçado



espaço



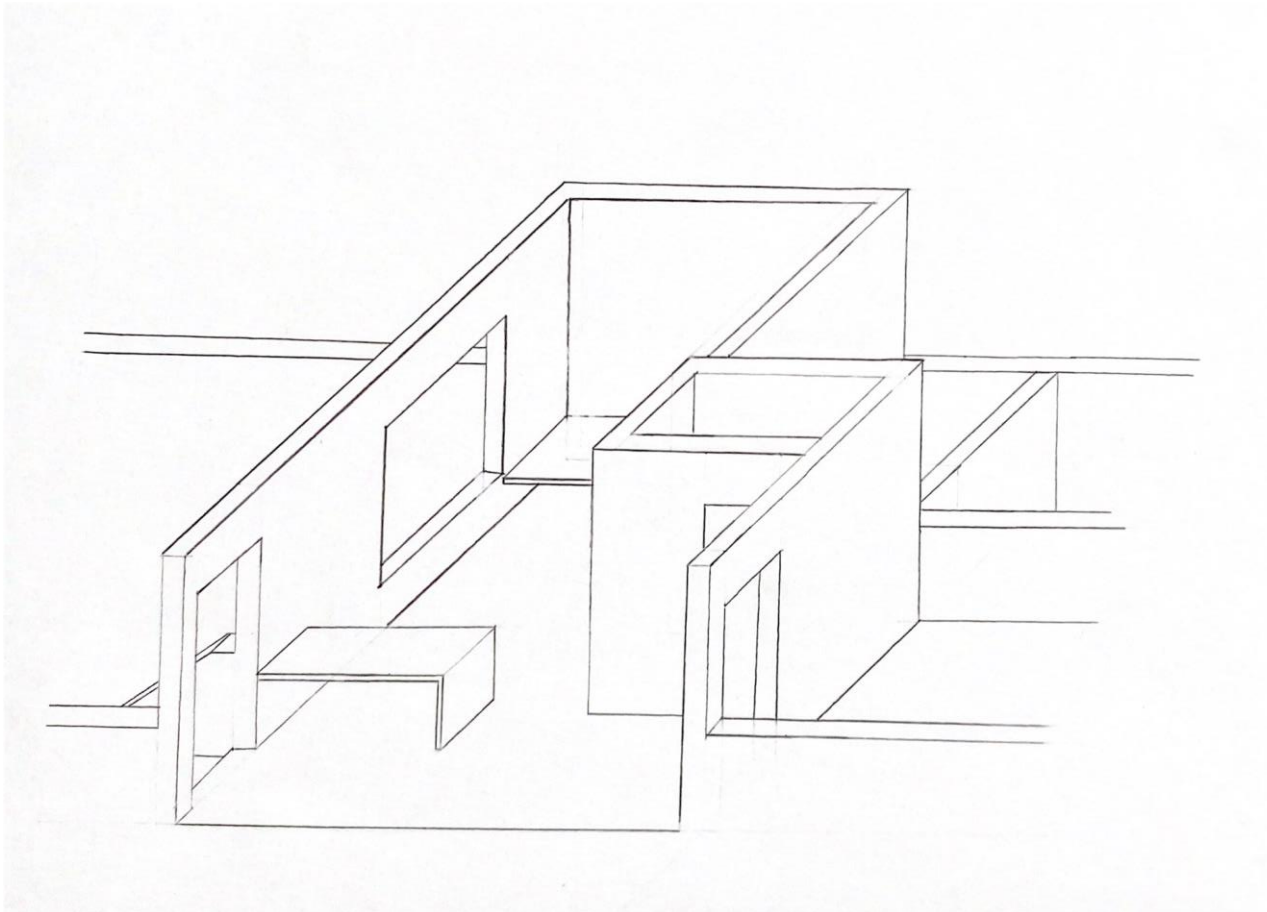




planta(s) e corte e alçado

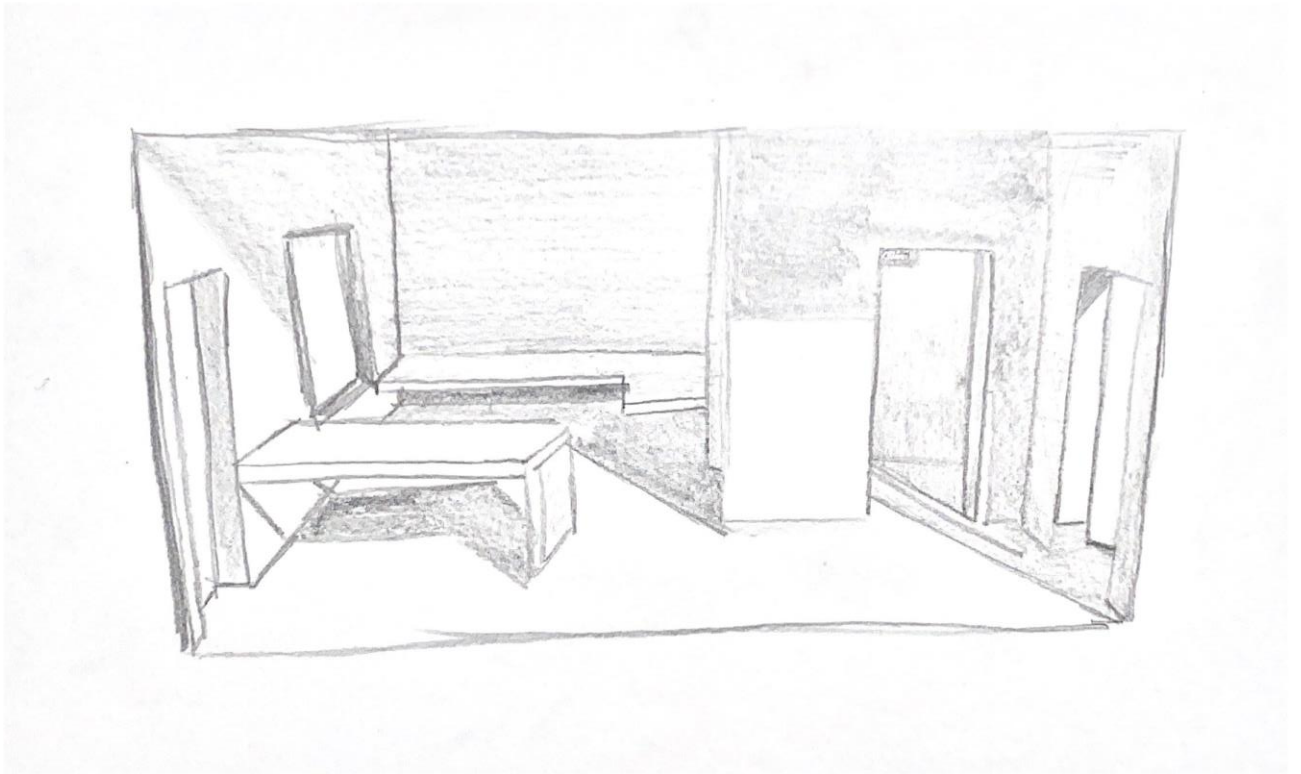


Análise



organização geométrica e composição formal





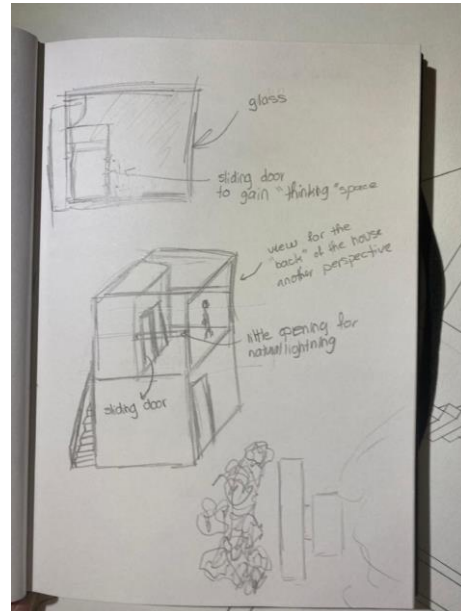
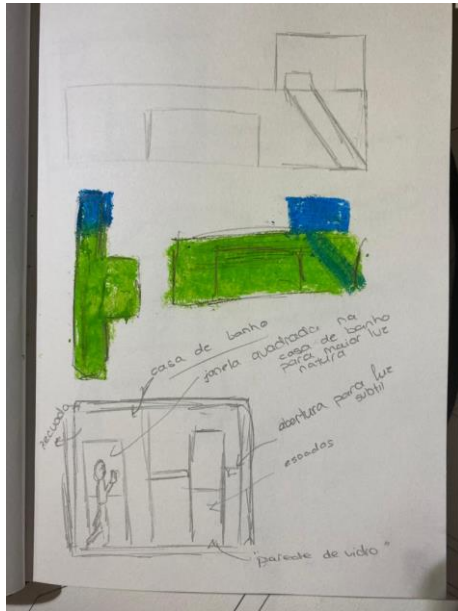
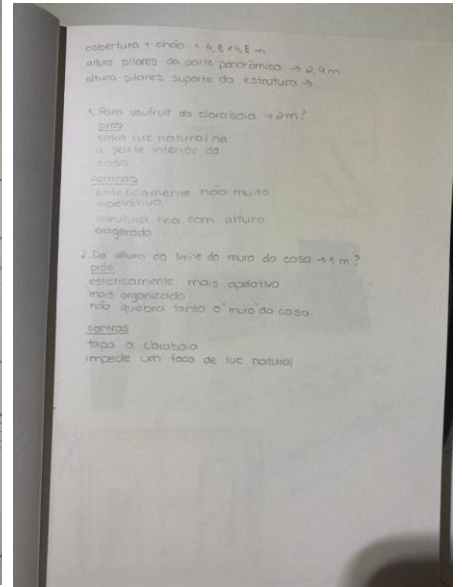
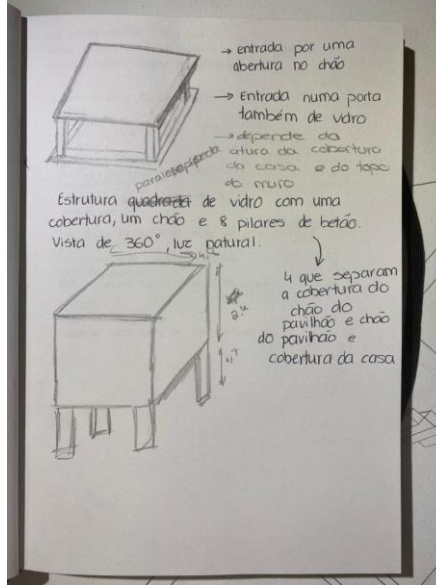
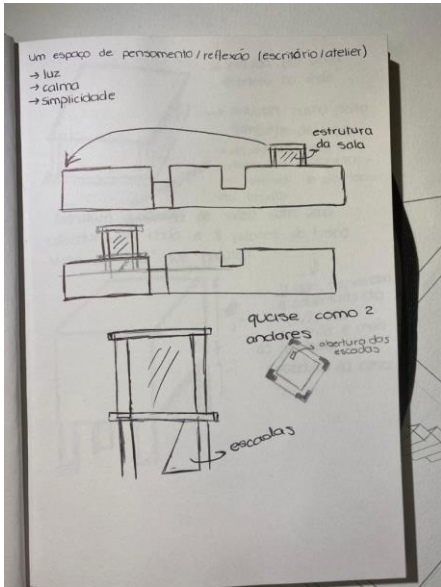
luz

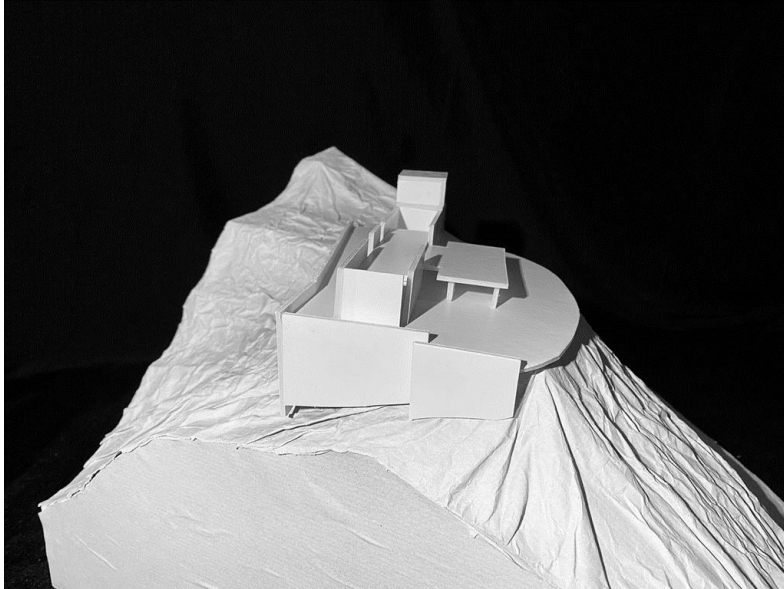
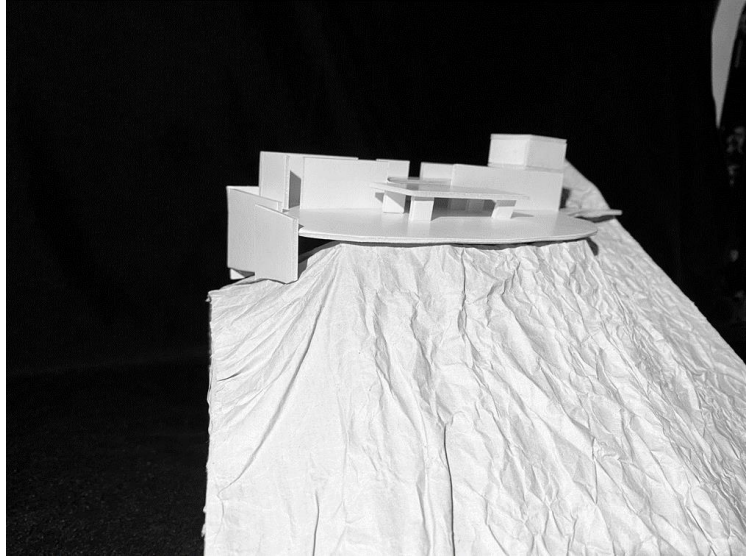


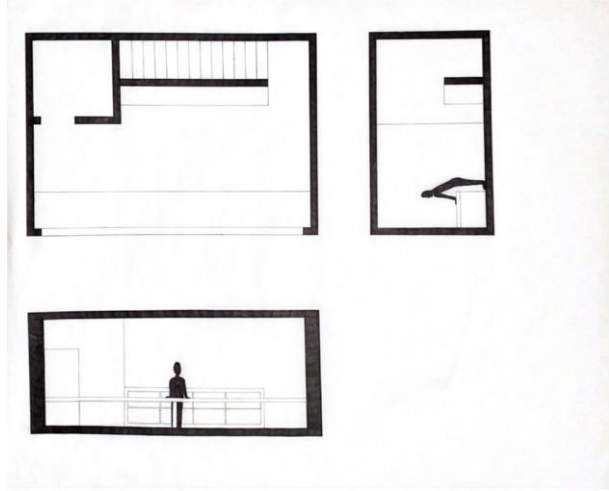
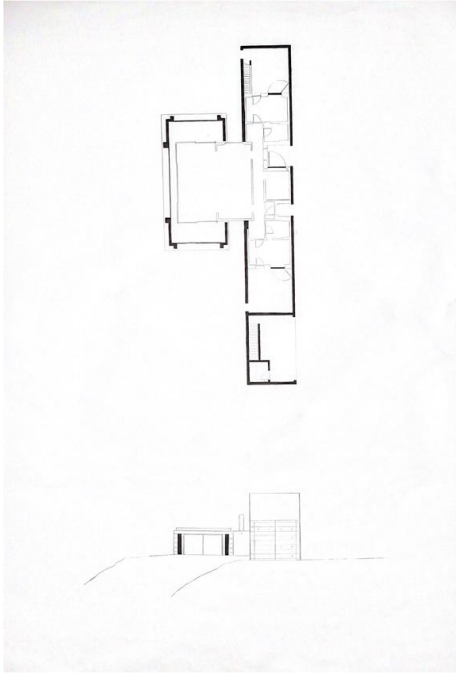
Narrativa descriptiva

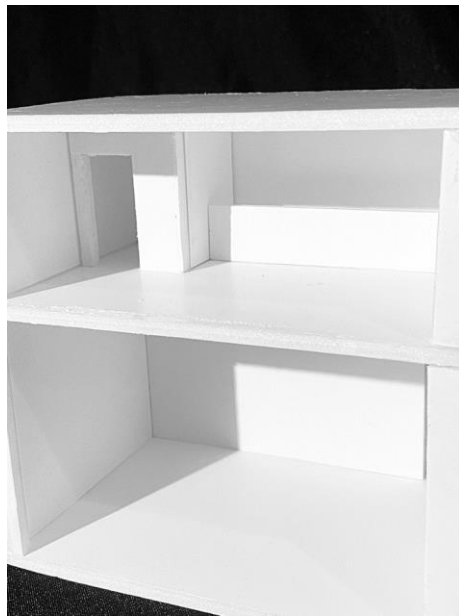
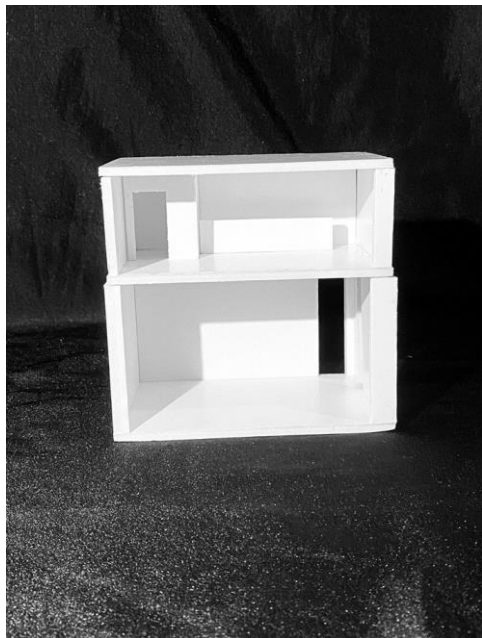
O pavilhão, um espaço para pensar, refletir, relaxar.
Foi um aproveitamento de um espaço inicial, transformando-o num espaço multifuncional onde é permitido trabalhar com muita luz natural e onde se pode ter um momento de reflexão e lazer, como por exemplo espaço de leitura e ou atelier.

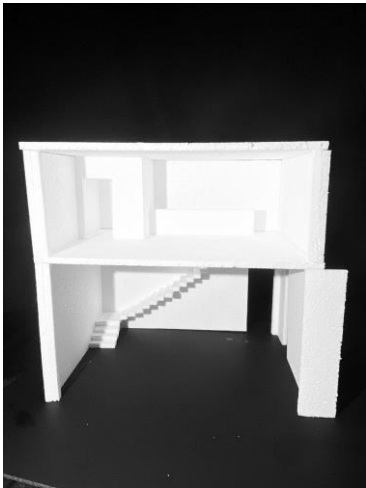
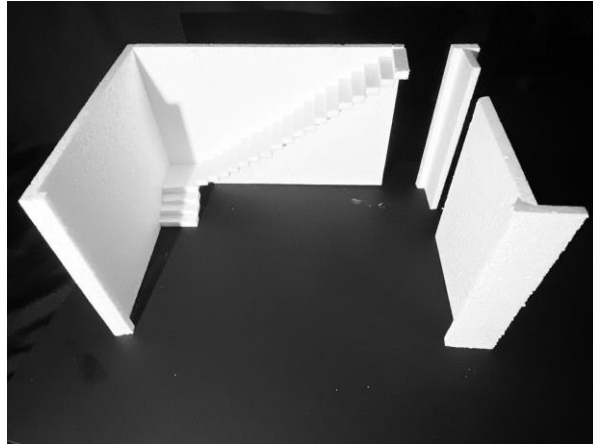
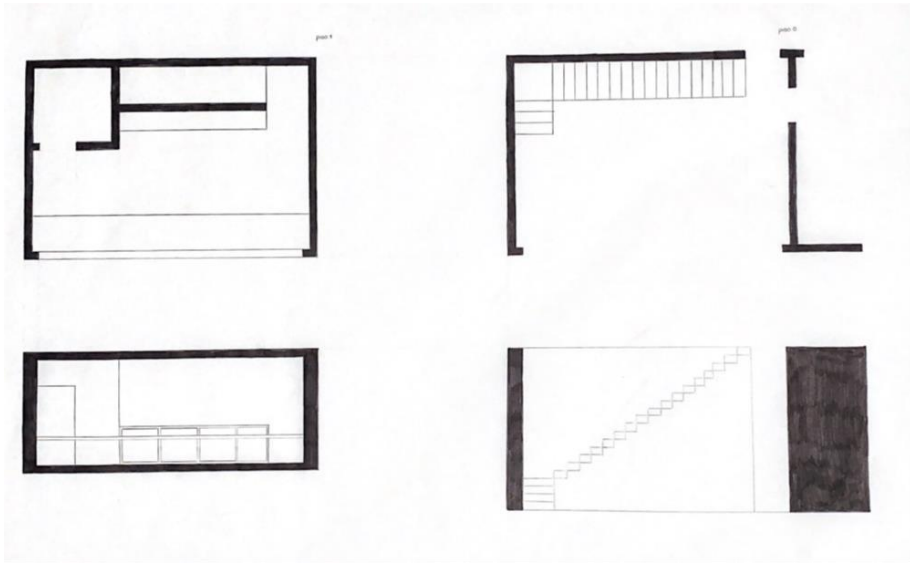
Processo

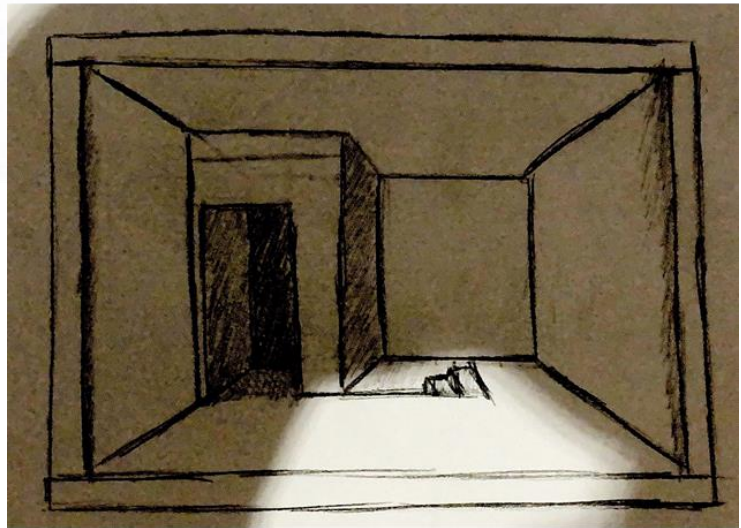
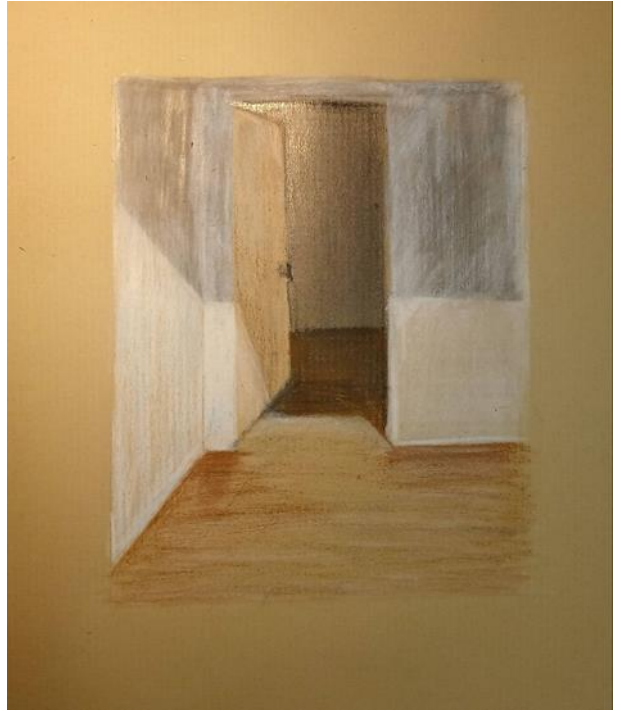
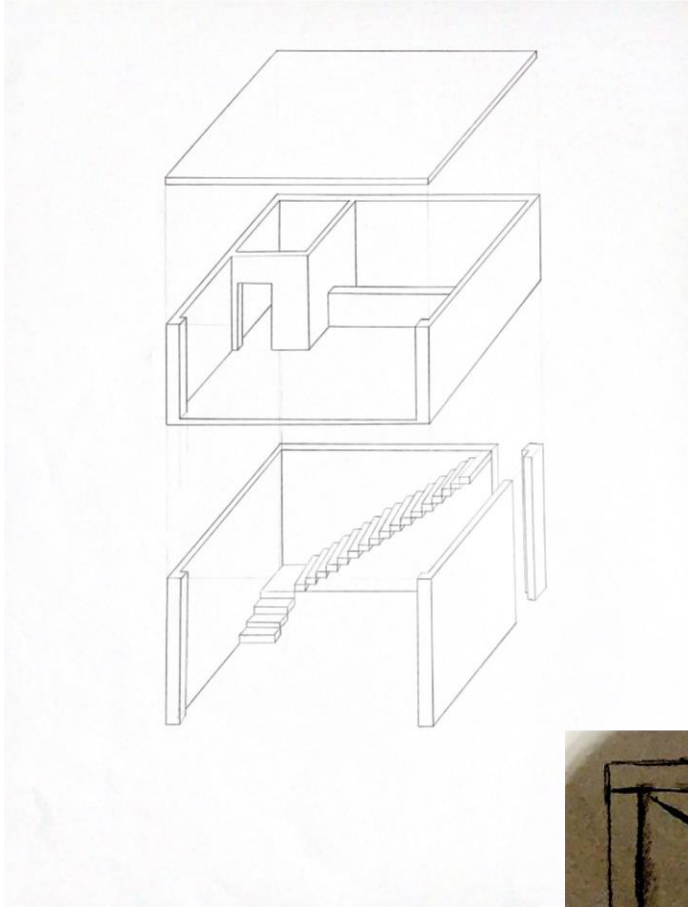












Casas | fase 1

Caso de estudo . autor

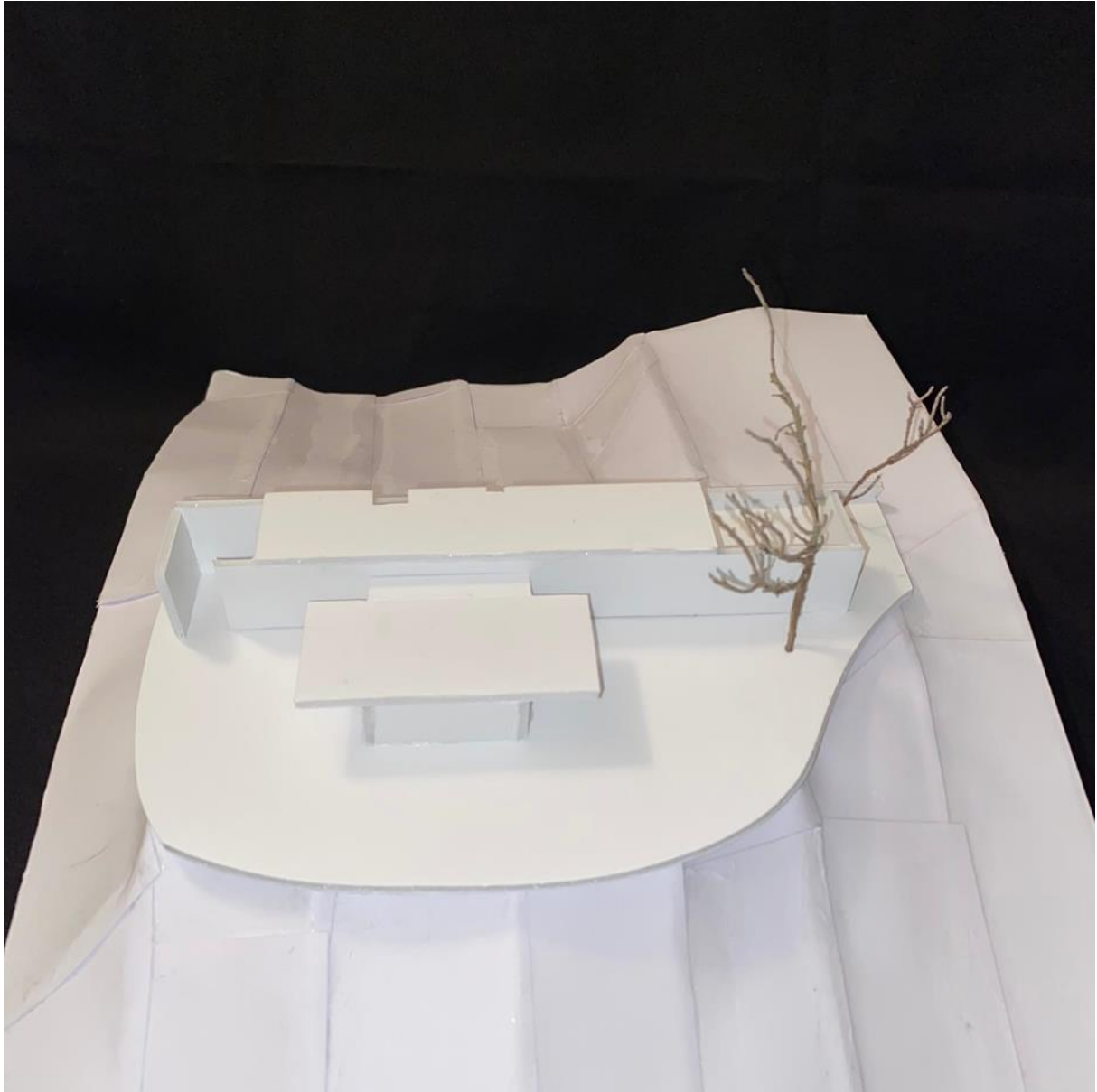
*“Para mim, é aquilo que me faz
continuar a ter coragem para ser
arquiteto...coragem, persistência
e obstinação.”*

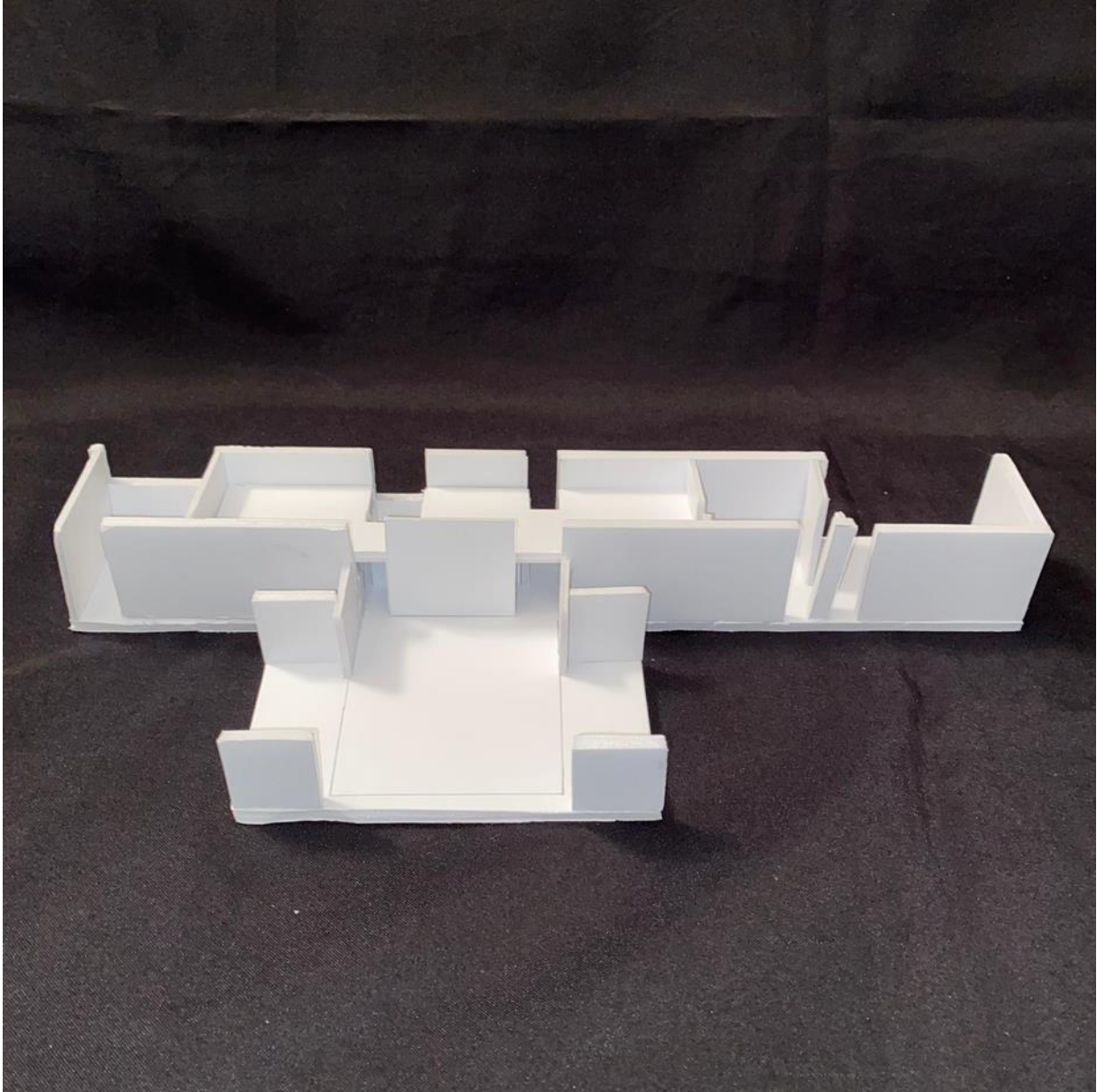
José Neves

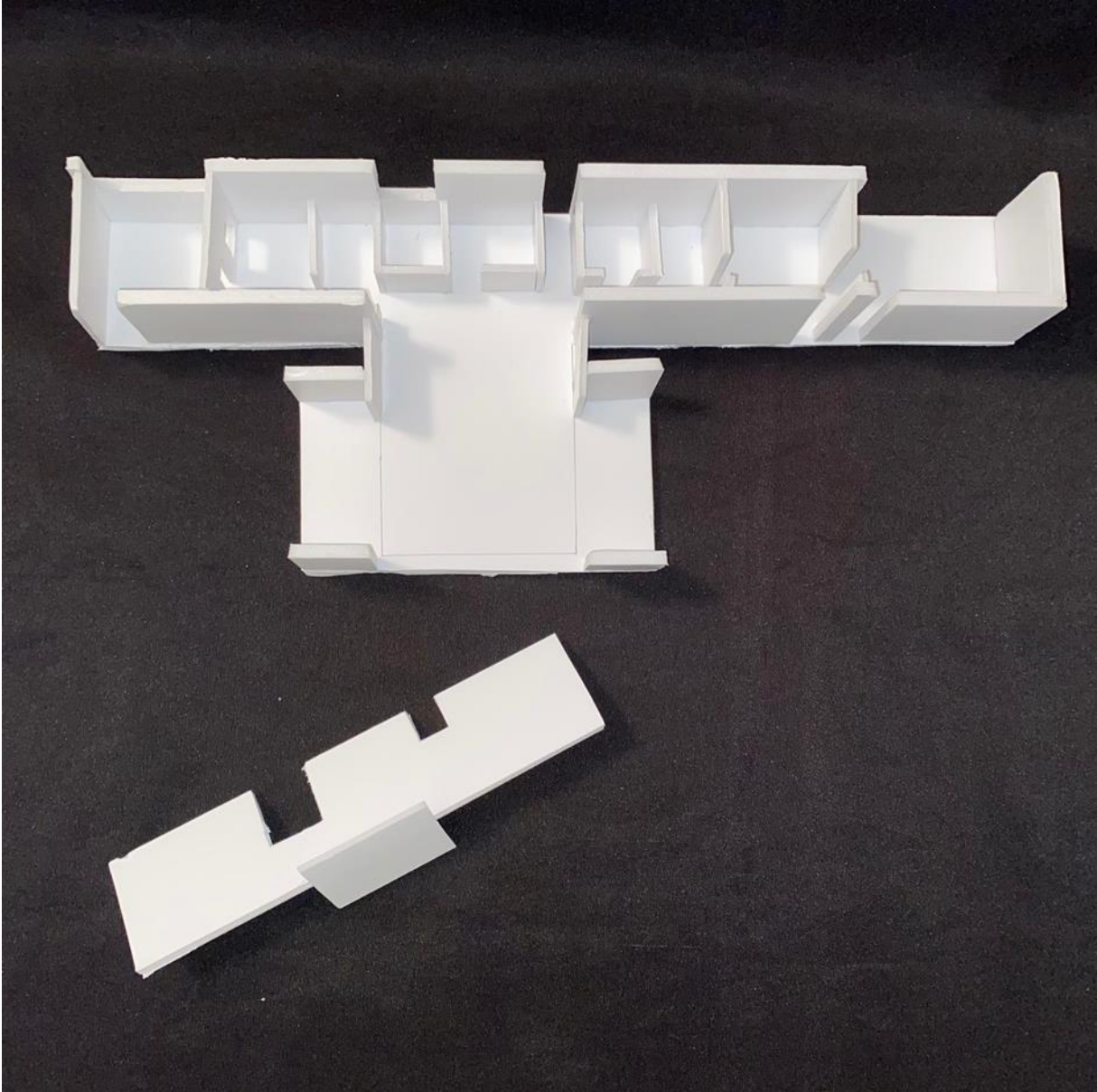


Maquetes

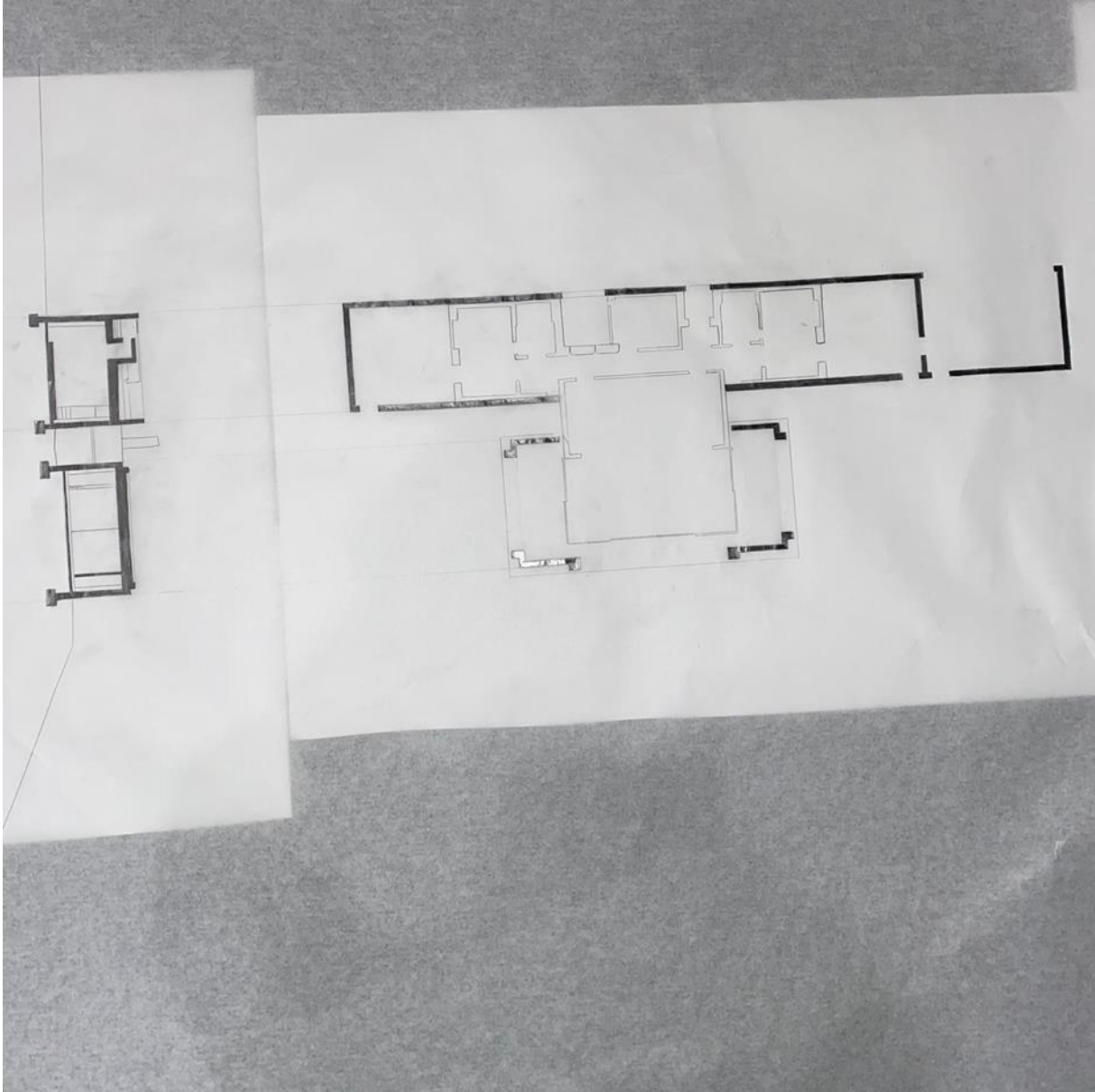




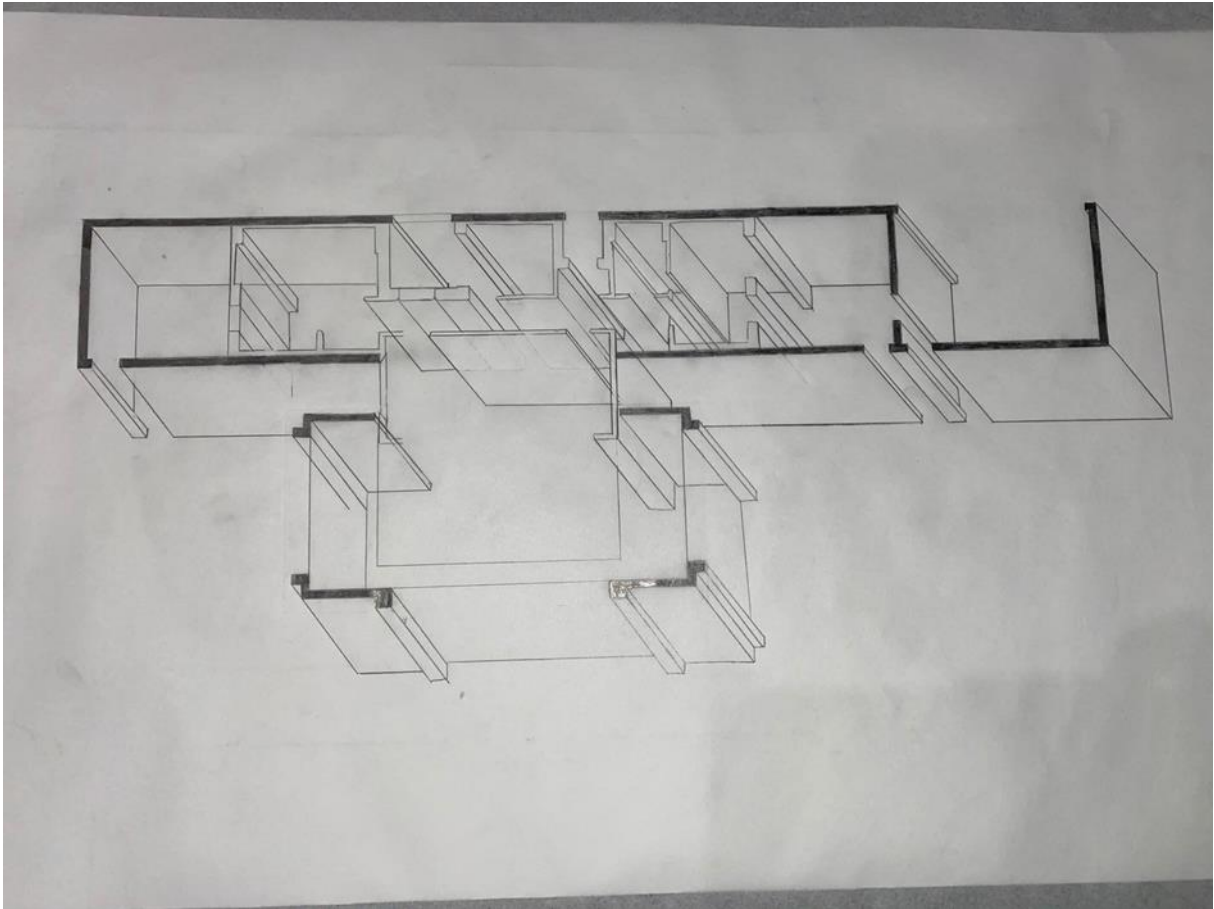




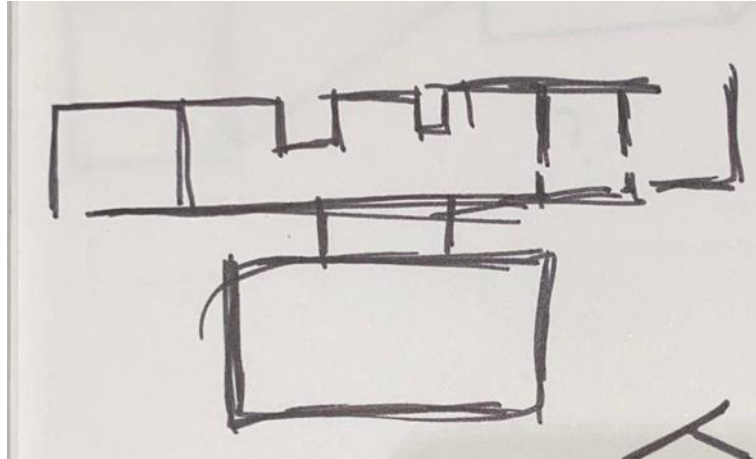
Desenhos de representação



planta e secção articuladas

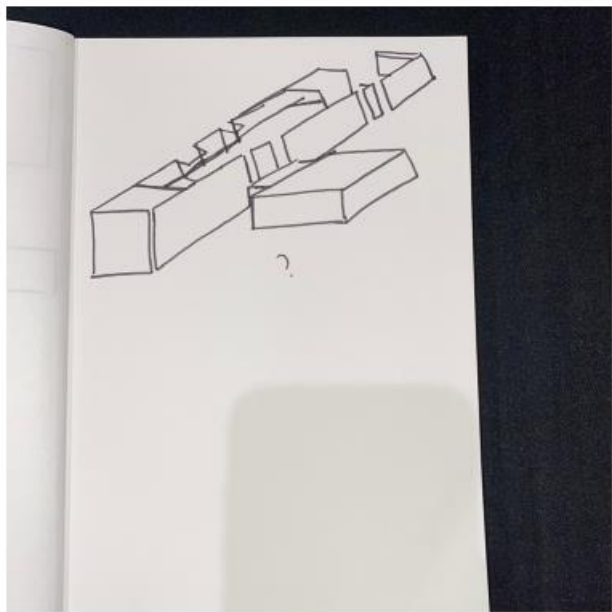


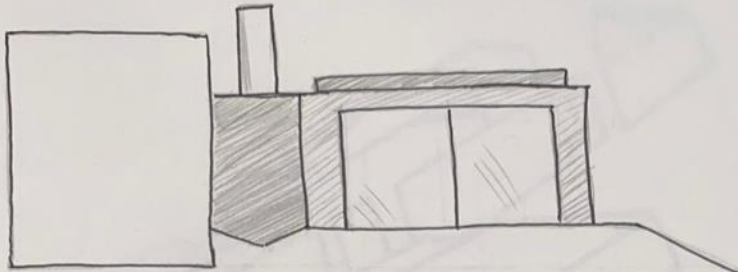
axonometria geral



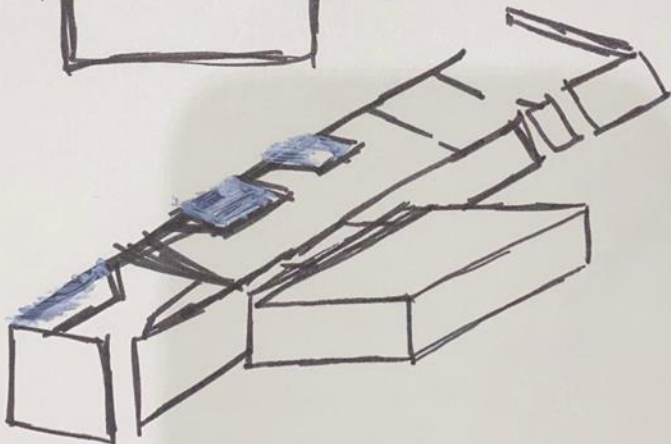
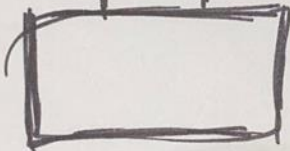
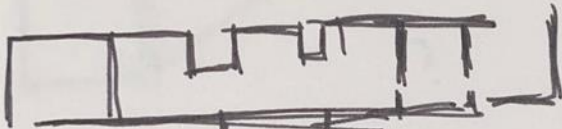
esquiço sintese

Processo





alçado oeste



Casa de Helides

Escala 1:200

198 → ~~1,5 cm~~ 1 cm

199 → ~~1,5 cm~~ 1,5 cm

200 → 2 cm → linha de orientação

201 → 0,5 cm

202 → 1 cm

203 → 1,5 cm

204 → 2 cm

205 → 2,5 cm

206 → 3 cm

207 → 3,5 cm

208 → 4 cm

209 → 4,5 cm

210 → 5 cm

211 → 5,5 cm

212 → 6 cm

213 → 6,5 cm

214 → 7 cm

215 → 7,5 cm

216 → 8 cm

espaçamento entre planos = 4 cm

comprimento = 44,5 cm

Casa → 1:200

Sala: 7,2 cm x 3,4 cm x

"corredor": 4,1 cm x 1 cm x

estrutura principal:

14,2 cm x 2,6 cm x

18 cm

muro para ~~5,8 cm~~

~~3,2 cm~~

escadas = ~~4 cm~~

~~1,4 cm~~ 7

9,9
11,3 x 1,8
0,4

3,9 x 0,8
3,45 x 7,2

$$6,3 : 2 = 3,15$$

$$9 + 9,5 = 18,5$$

$$9,25$$

$$12,5 : 2 = 6,25$$

$$6,9 = 3,45$$

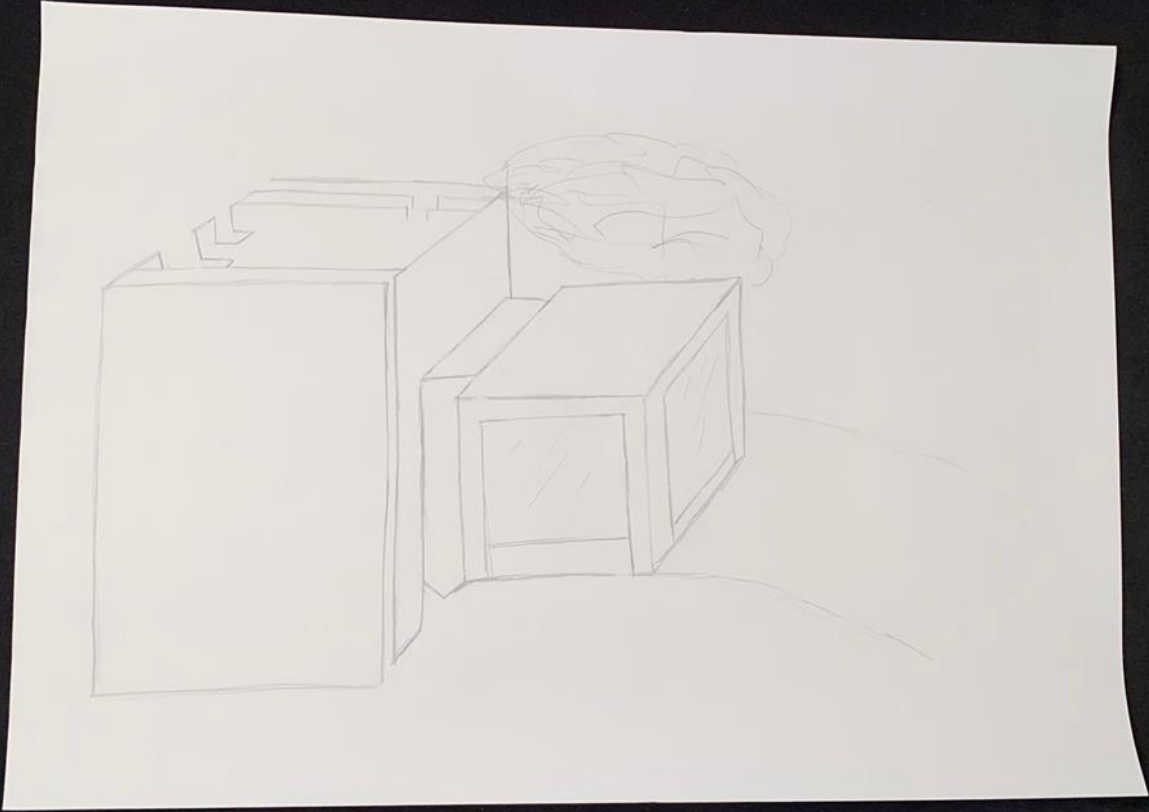
$$14,3 = 7,15$$

7 x 8,5

1,47 distancia

6,9 x 14,4

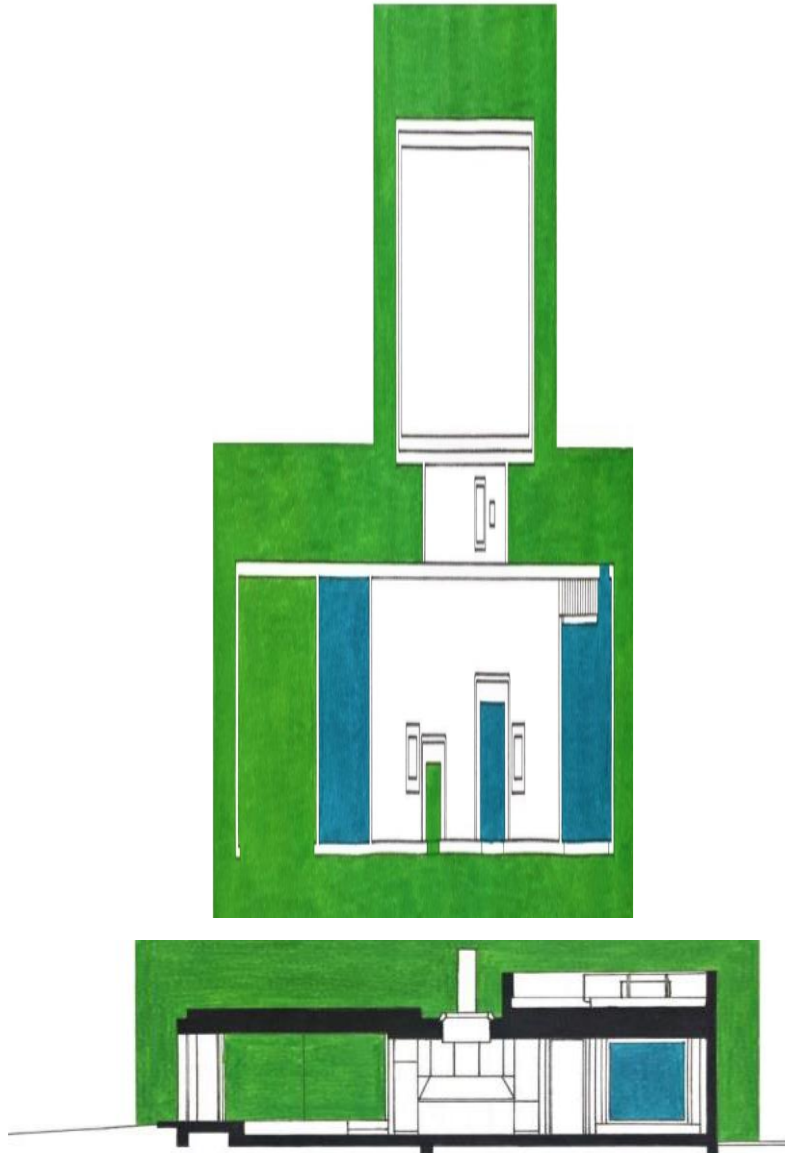
3,1



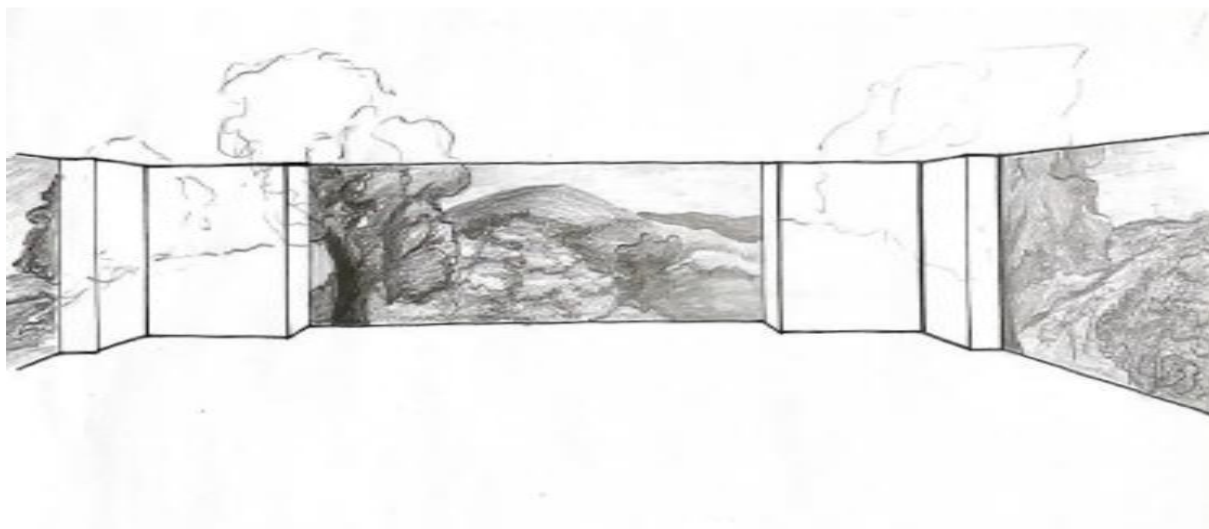
Casas | fase 2

Casa de Melides . José Neves

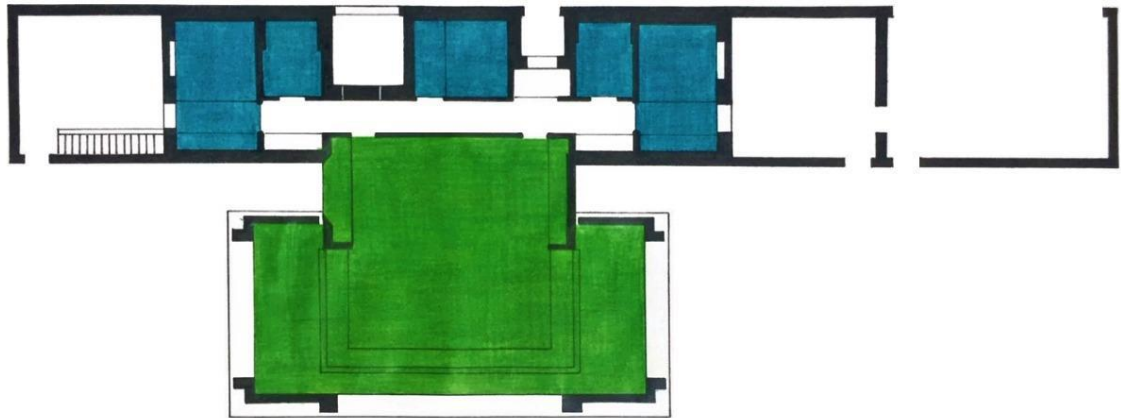
reflexão interpretativa



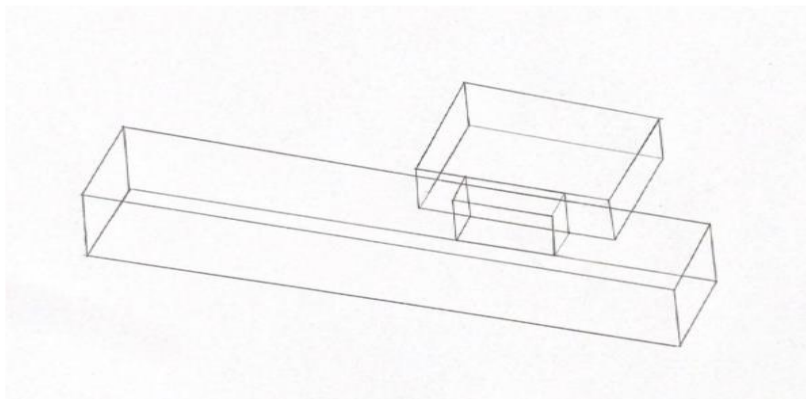
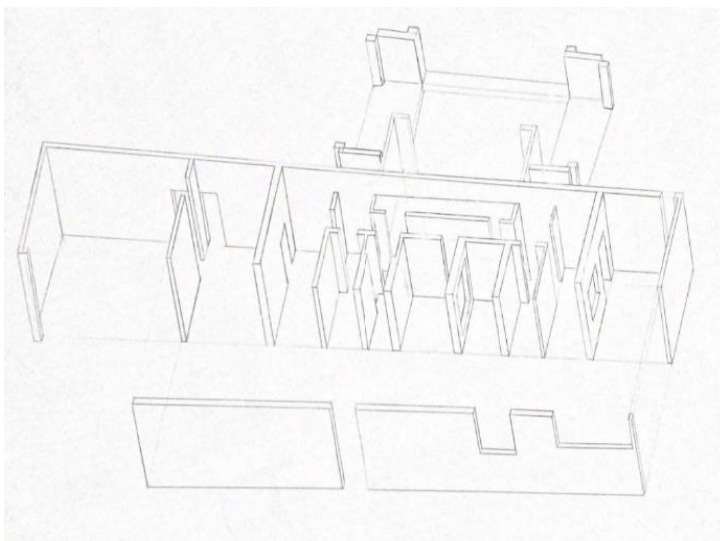
formas de transição



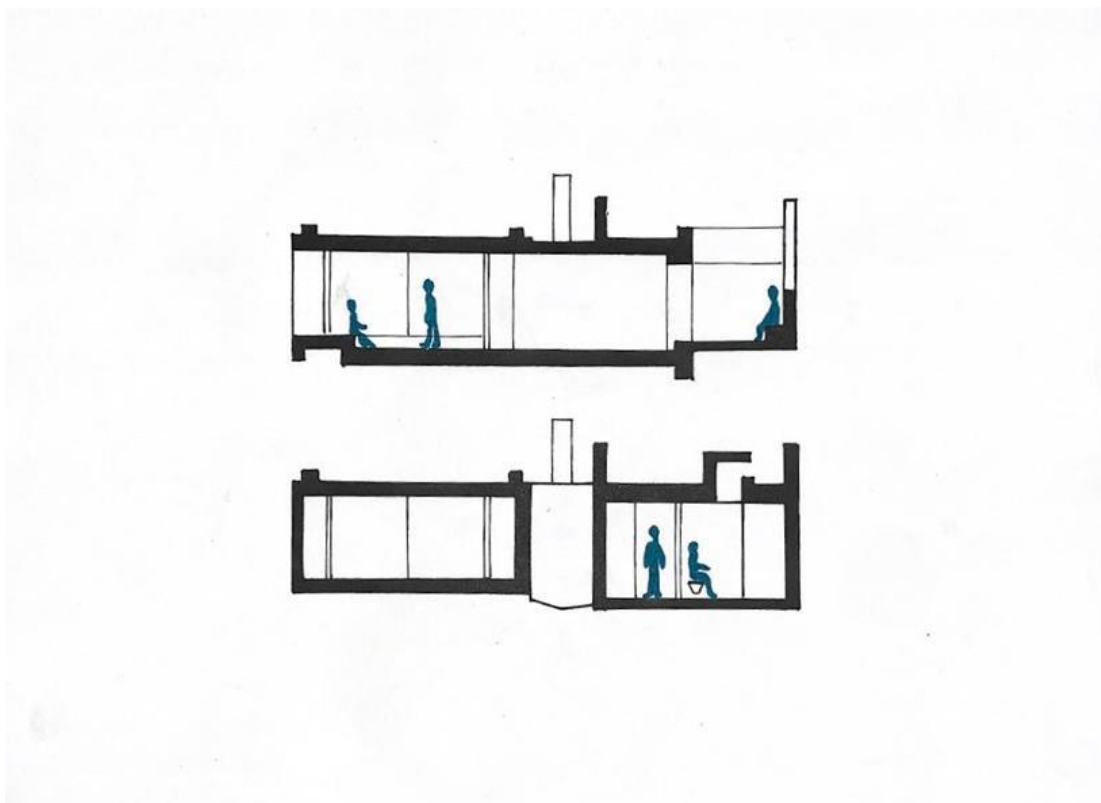
relação com o meio



organização do espaço



organização geométrica e composição formal



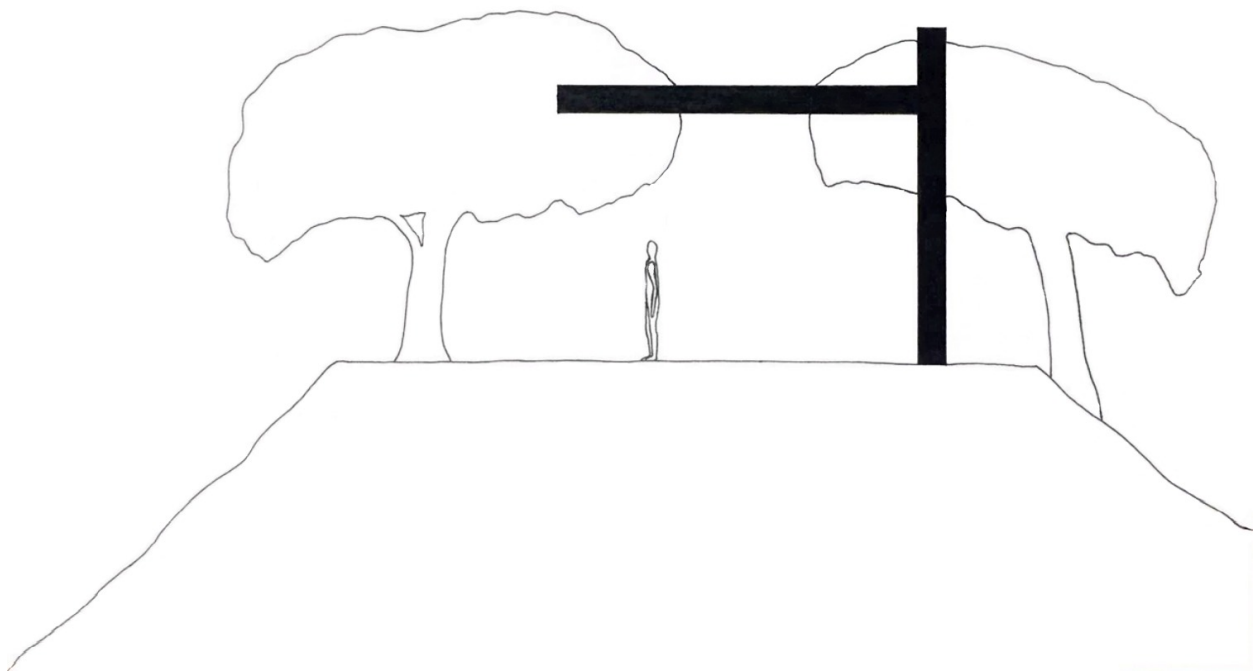
a escala da construção e do espaço interior



luz



materialidade

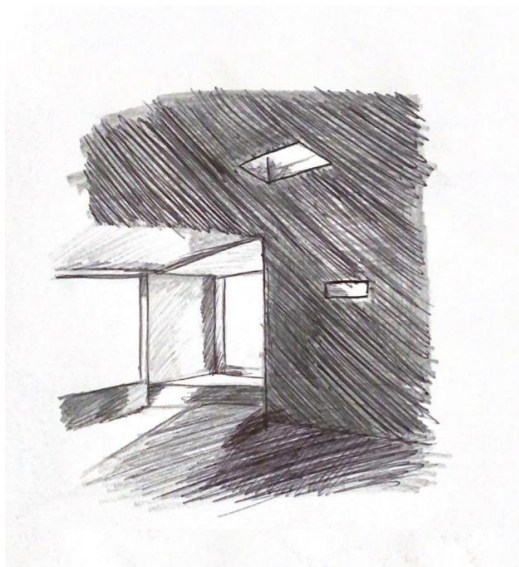


dimensão simbólica e significante

maquetes

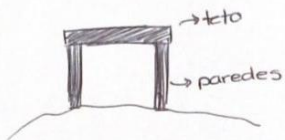


Processo

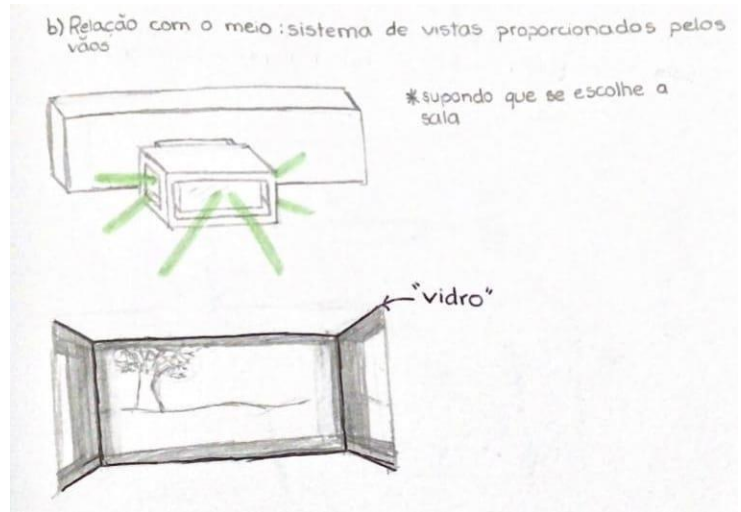


"Conceito de casa"

"Casa (...) é no seu sentido mais comum, um conjunto de paredes, cômodos e teto construídos pelo ser humano com a finalidade de construir um espaço de habitação."



casa de Melides - José Neves



Três fotografias





