

Laboratório de Arquitectura I

1º semestre

Madalena Carvalho Lourenço

[Exercício III]

Casa

Pavilhão

contexto

objecto

espaço

Análise

Narrativa descritiva

Processo

[Exercício II]

Casas | Fase 1

Casas | Fase 2

[Exercício I]

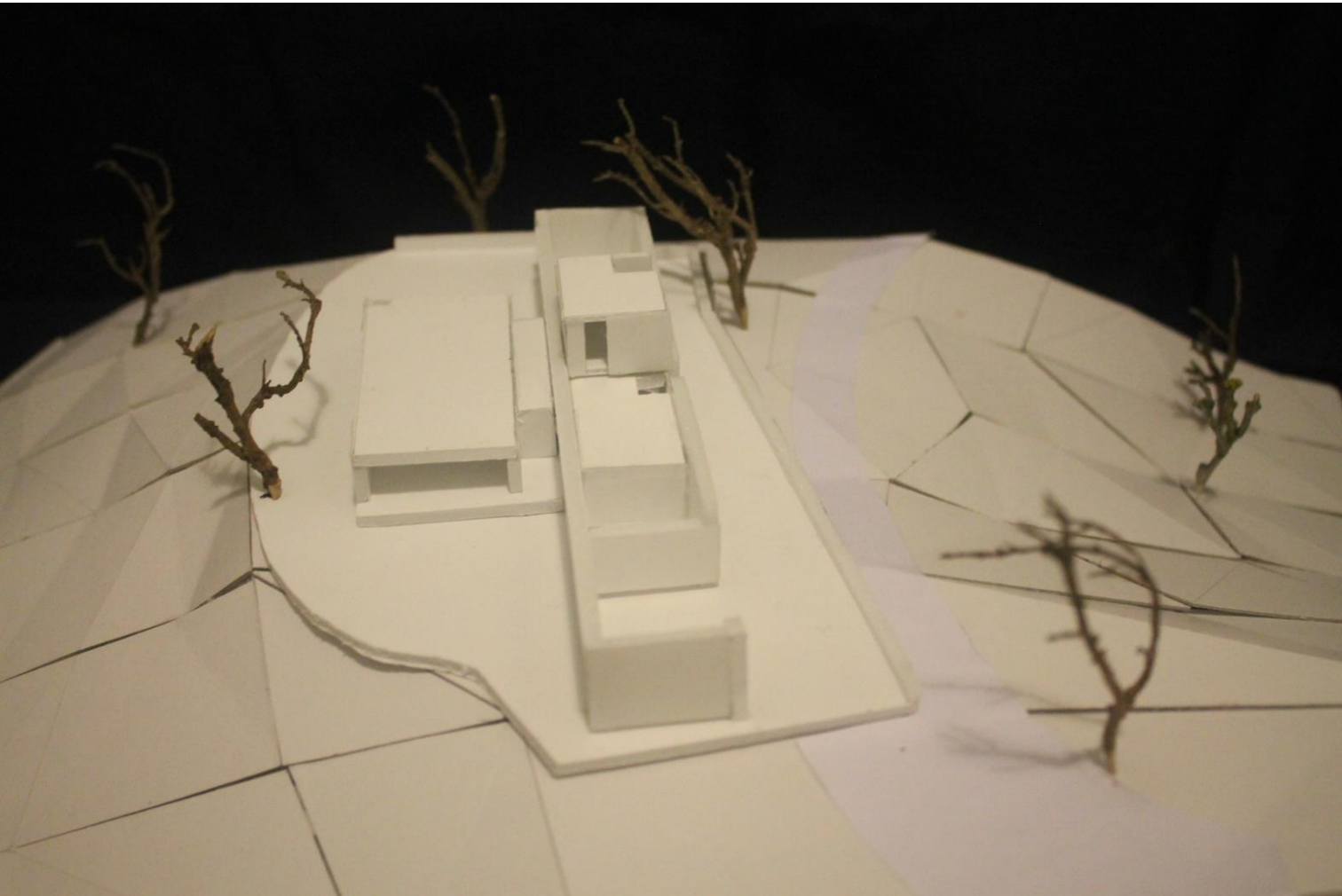
Três fotografias

O Pavilhão: um espaço para pensar

Casa em Melides . José Neves

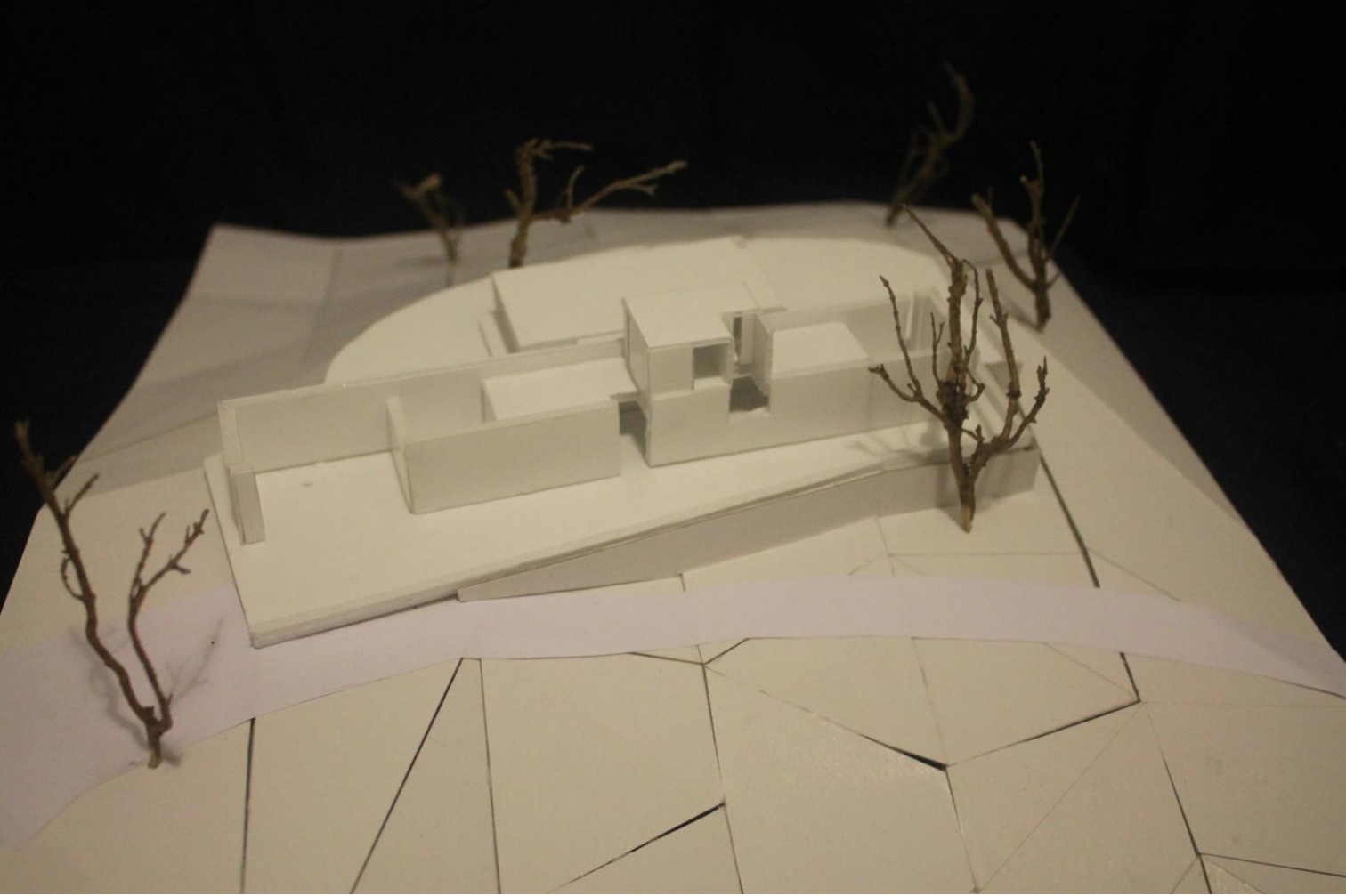
Casa

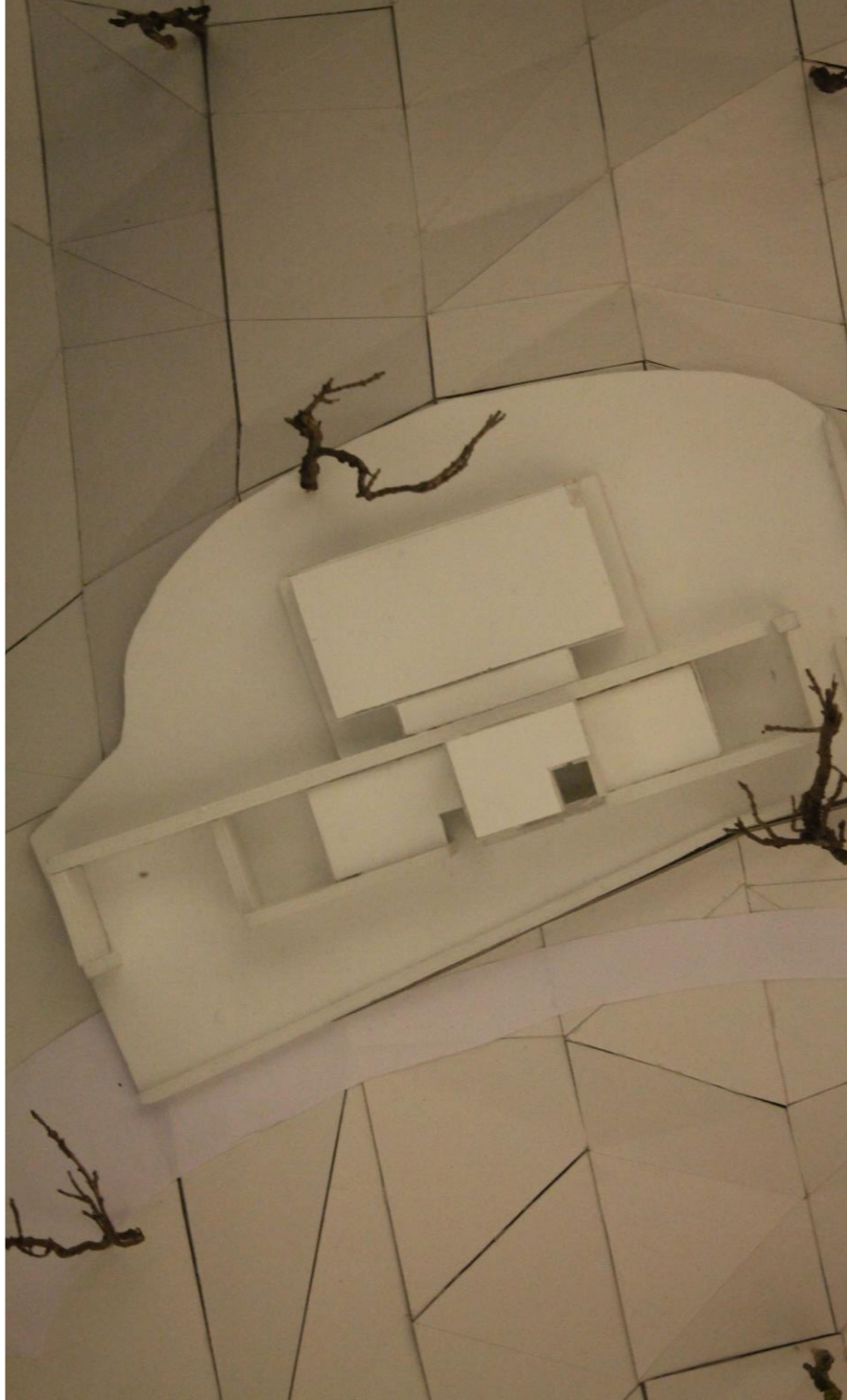
Casa em Melides . José Neves

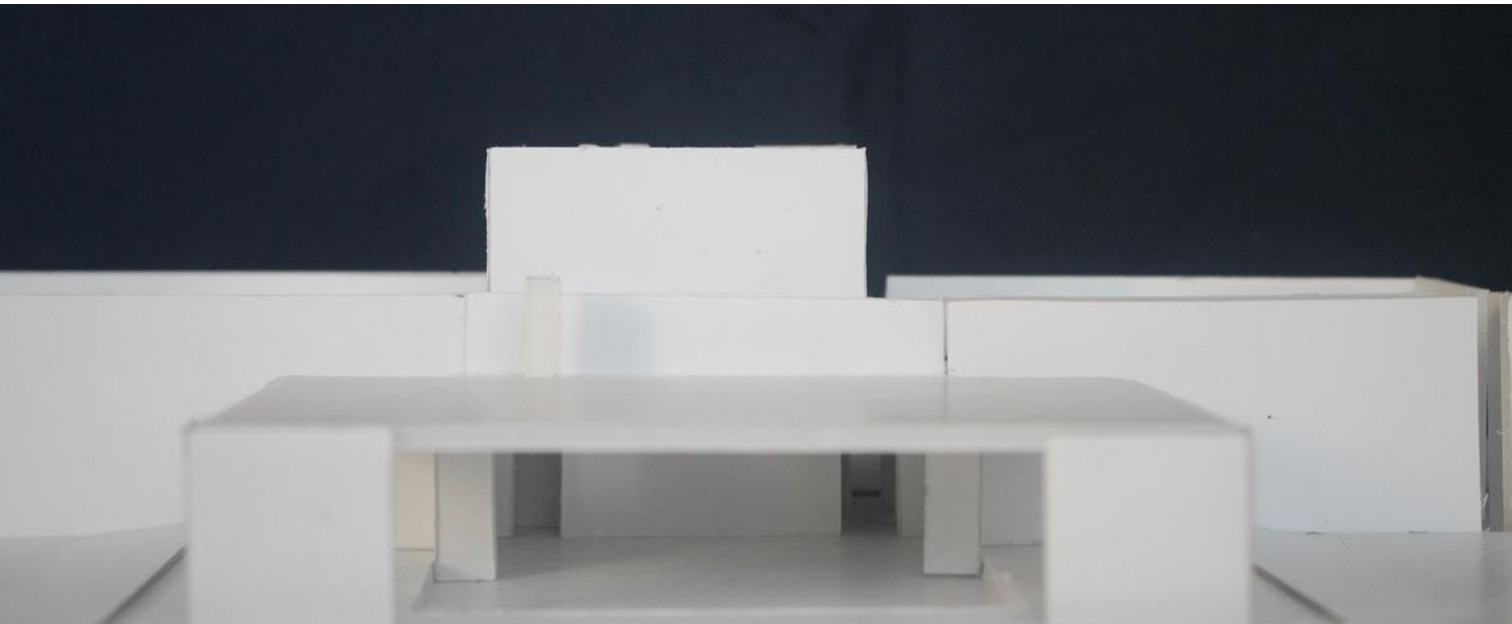


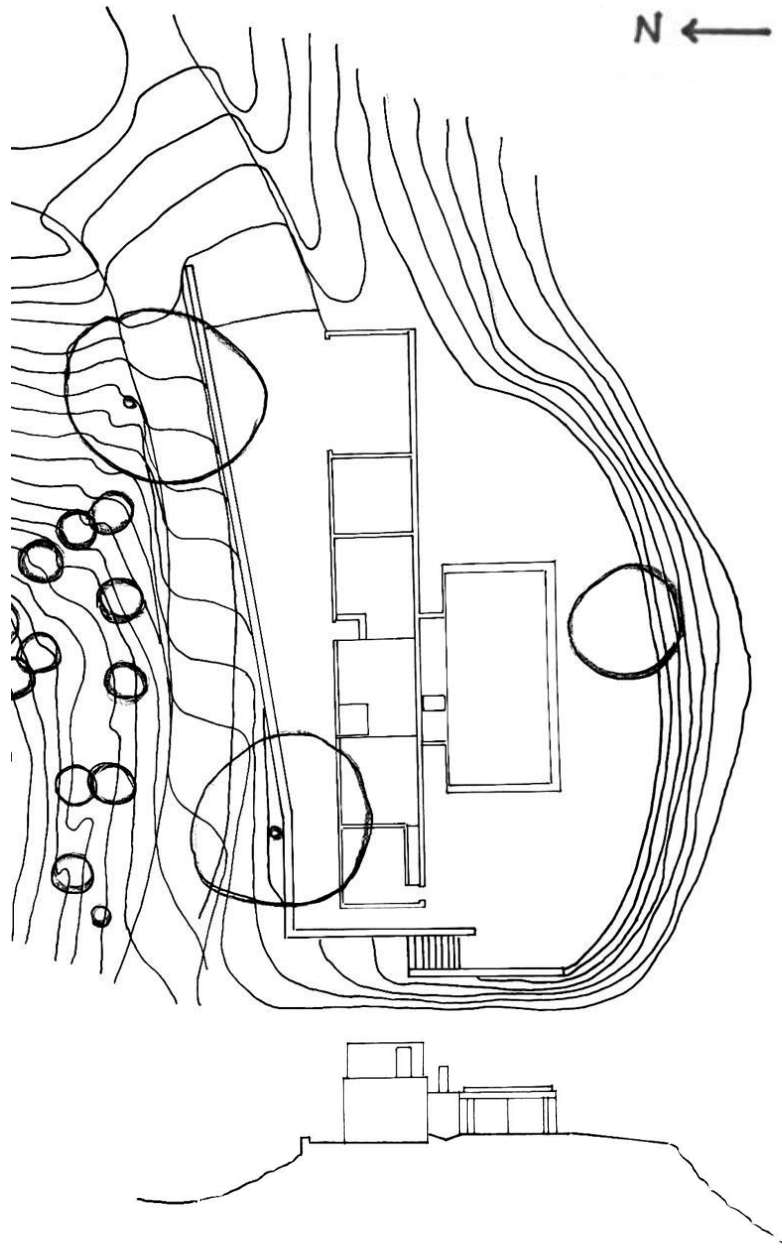
Pavilhão

contexto





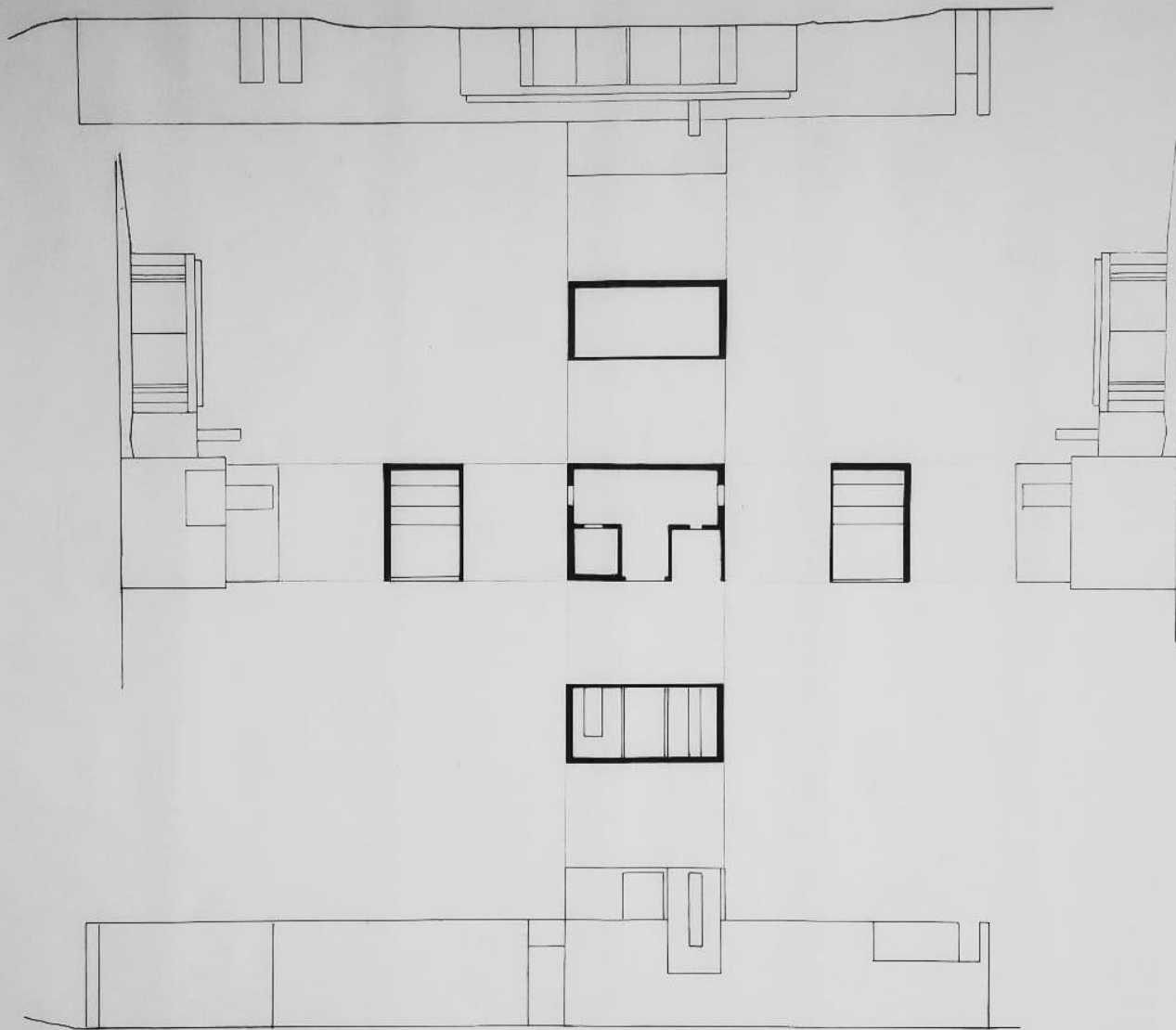


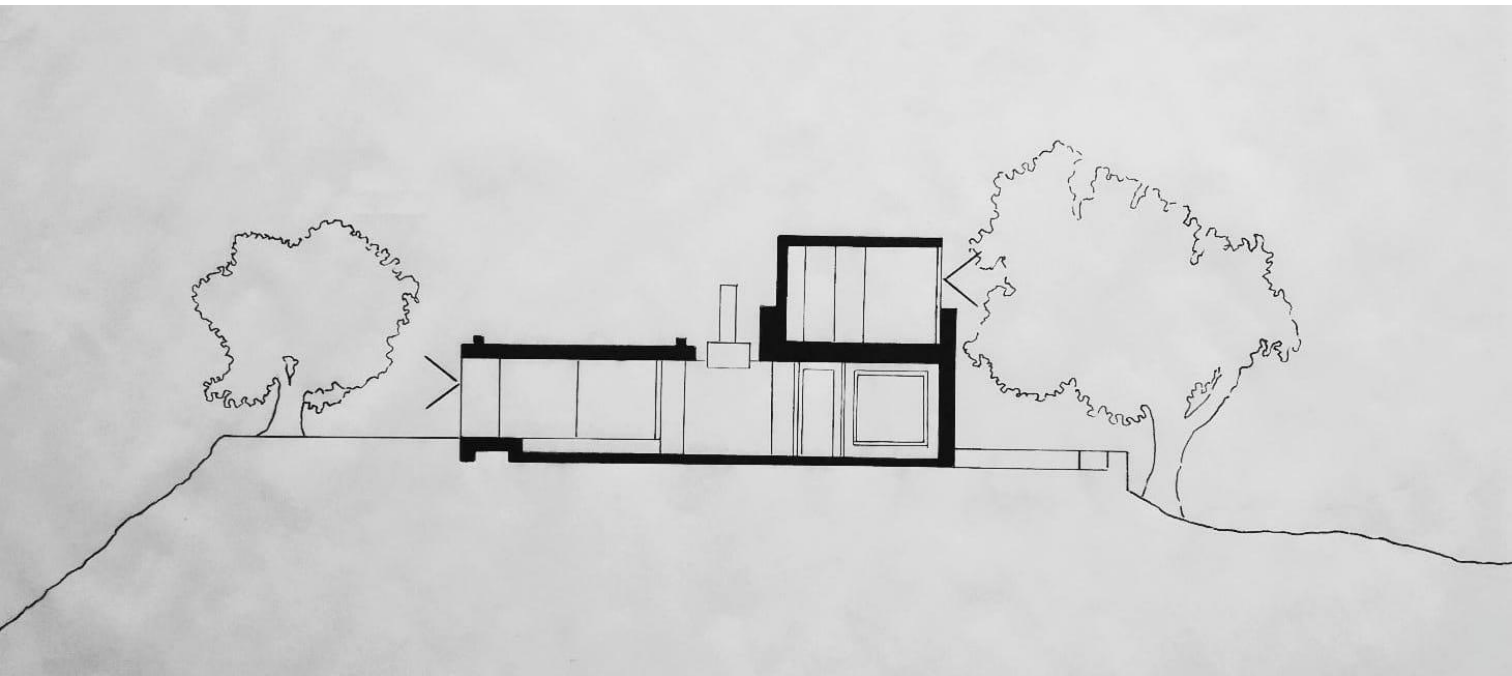


planta e perfil de enquadramento territorial

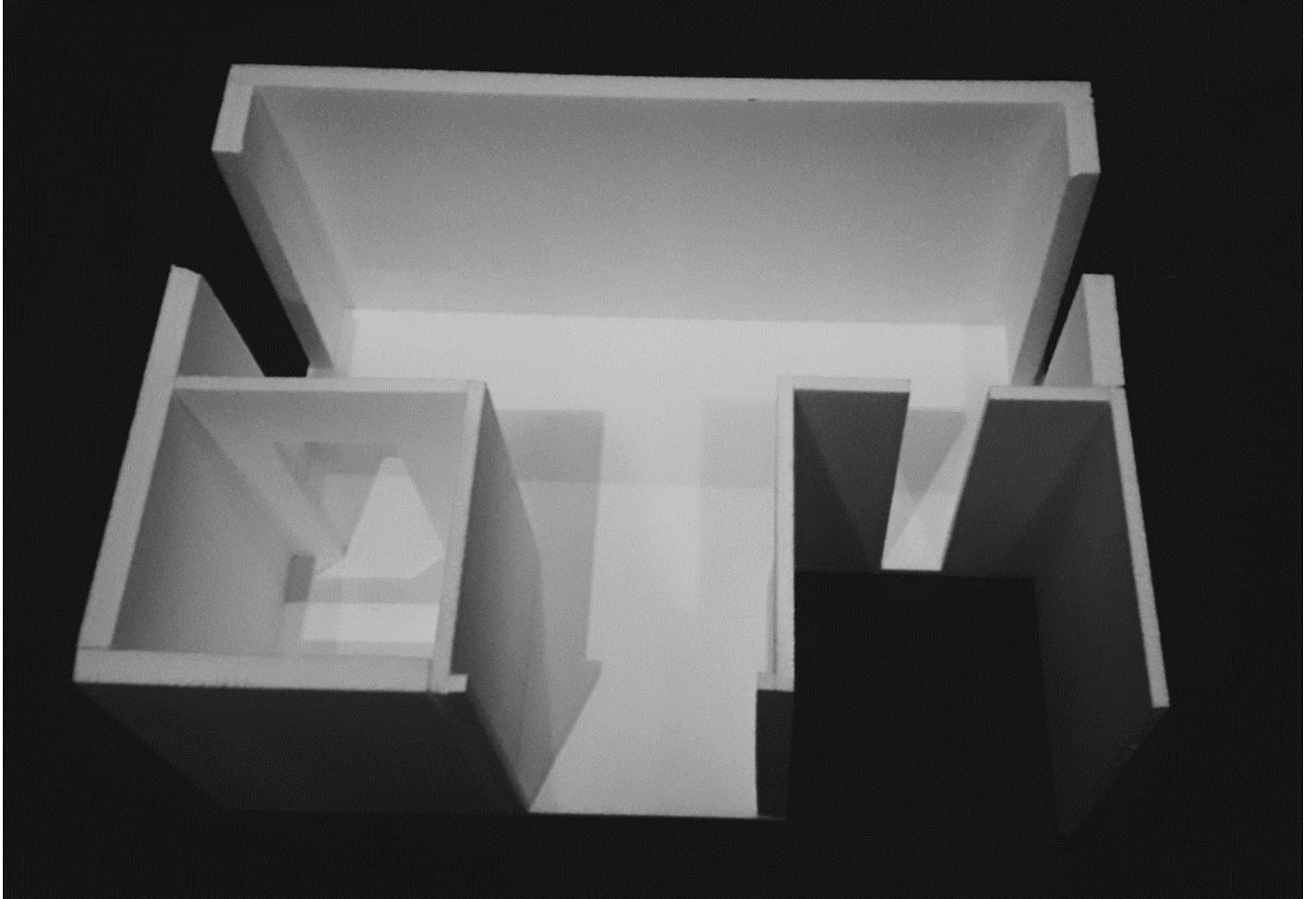


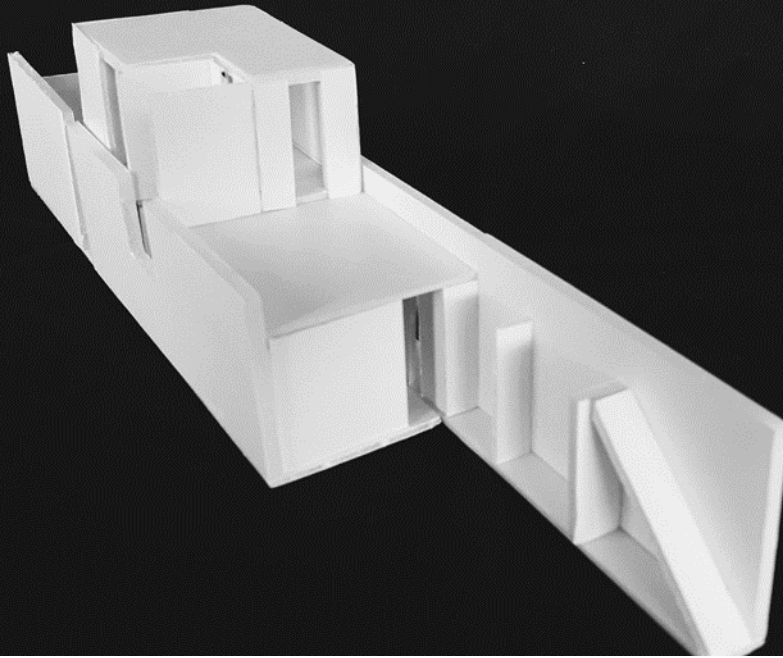
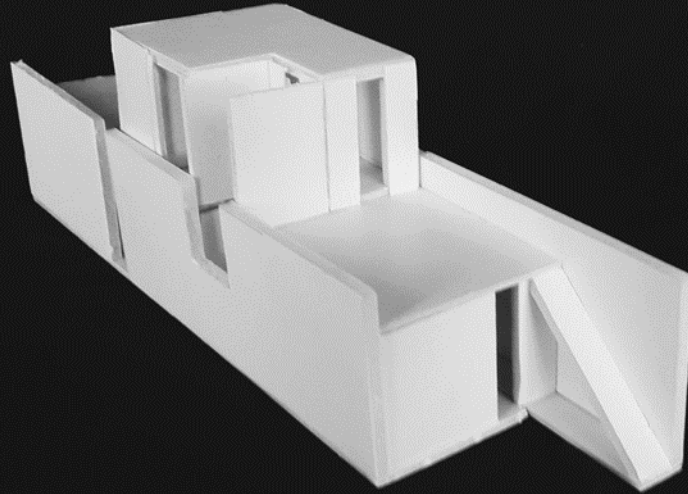
desenho(s) complementares

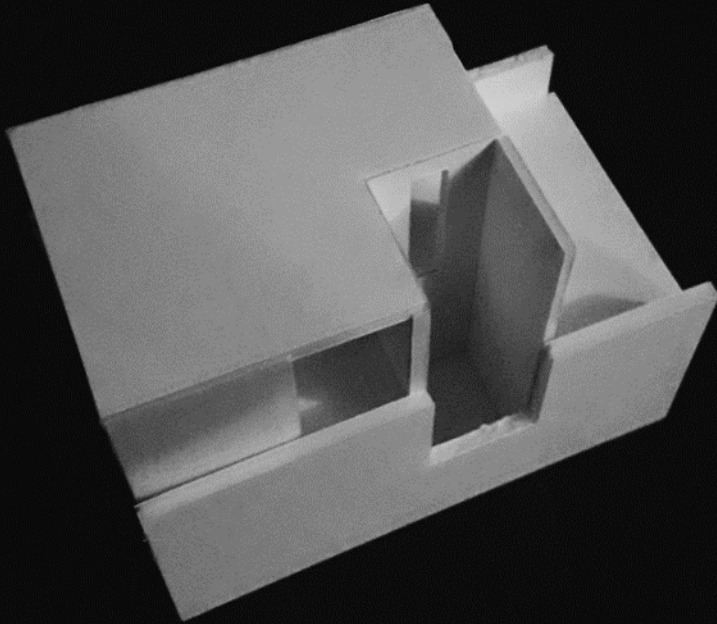




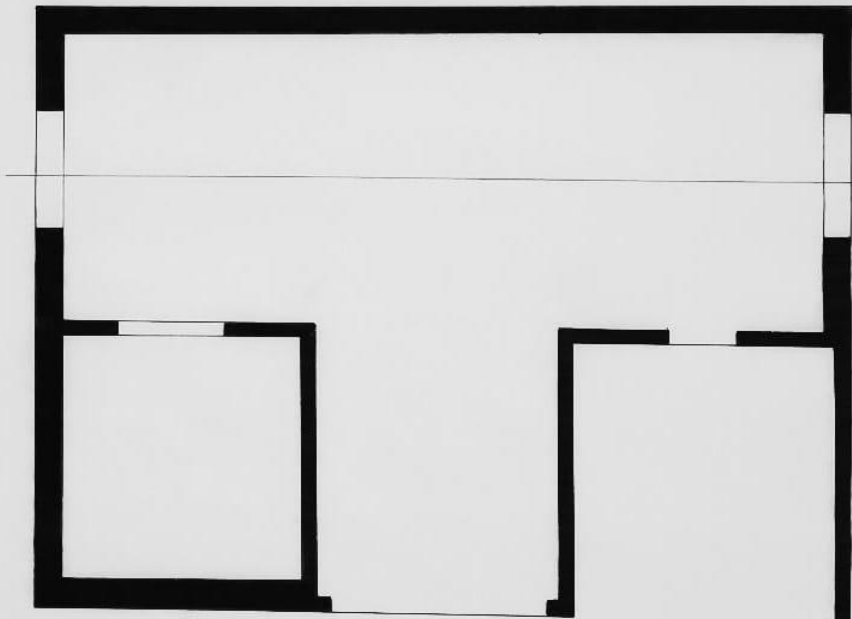
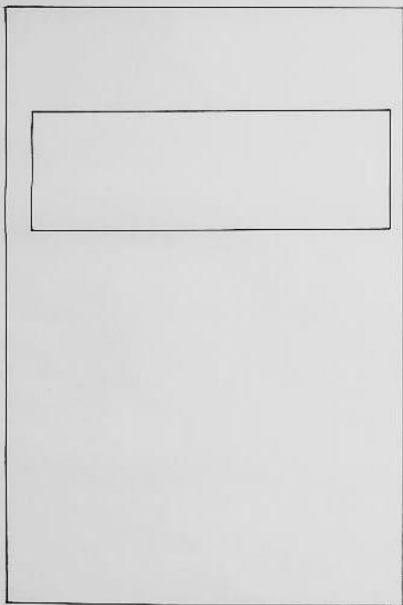
objecto







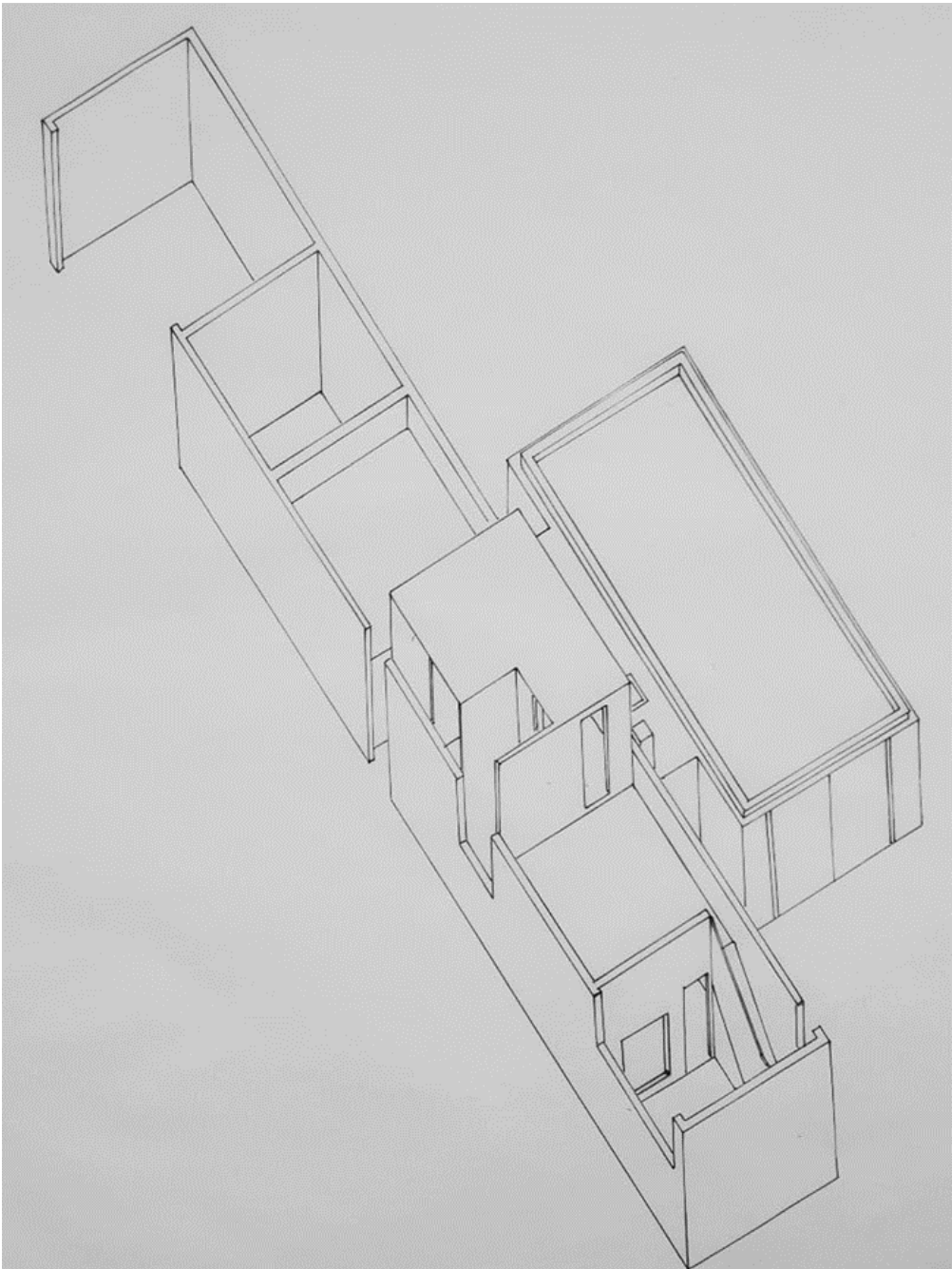


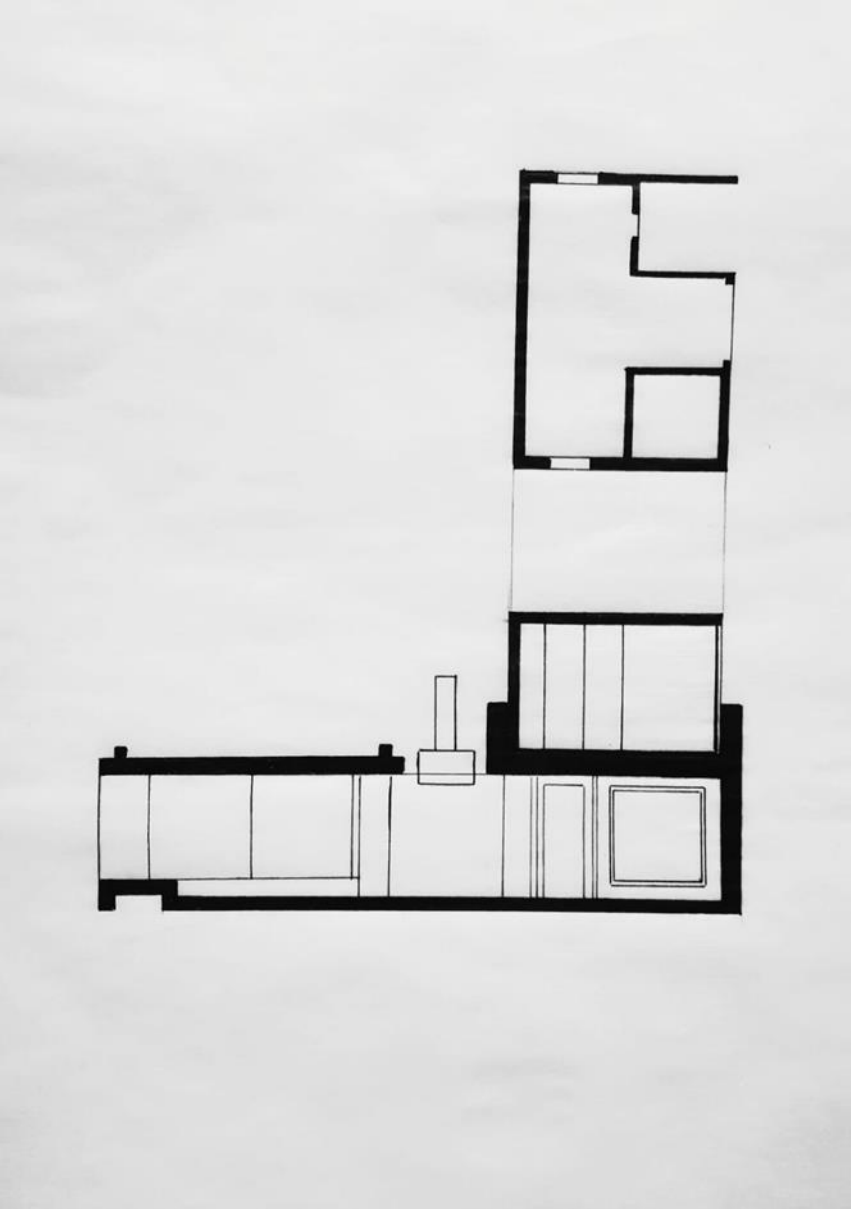


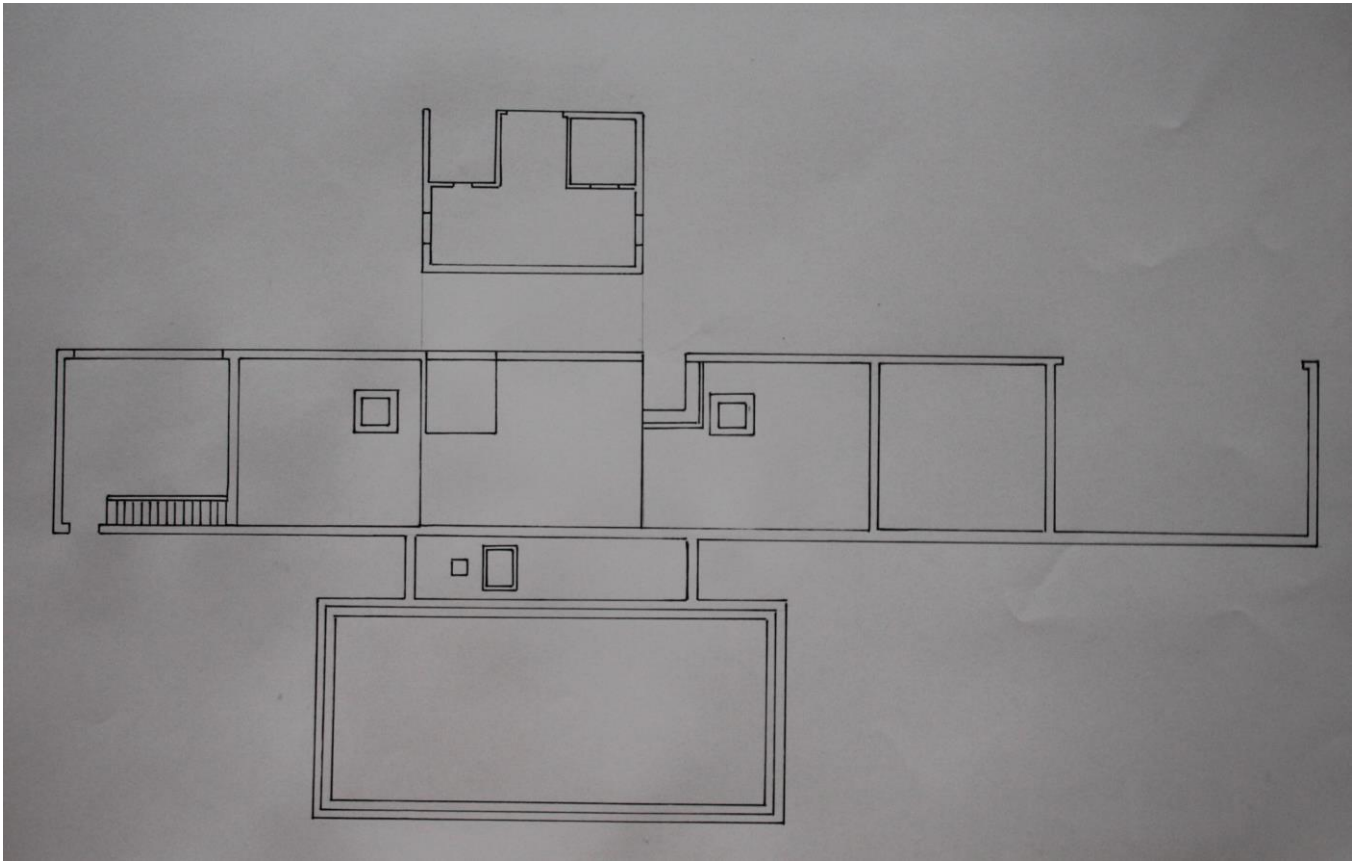
planta(s) e corte e alçado

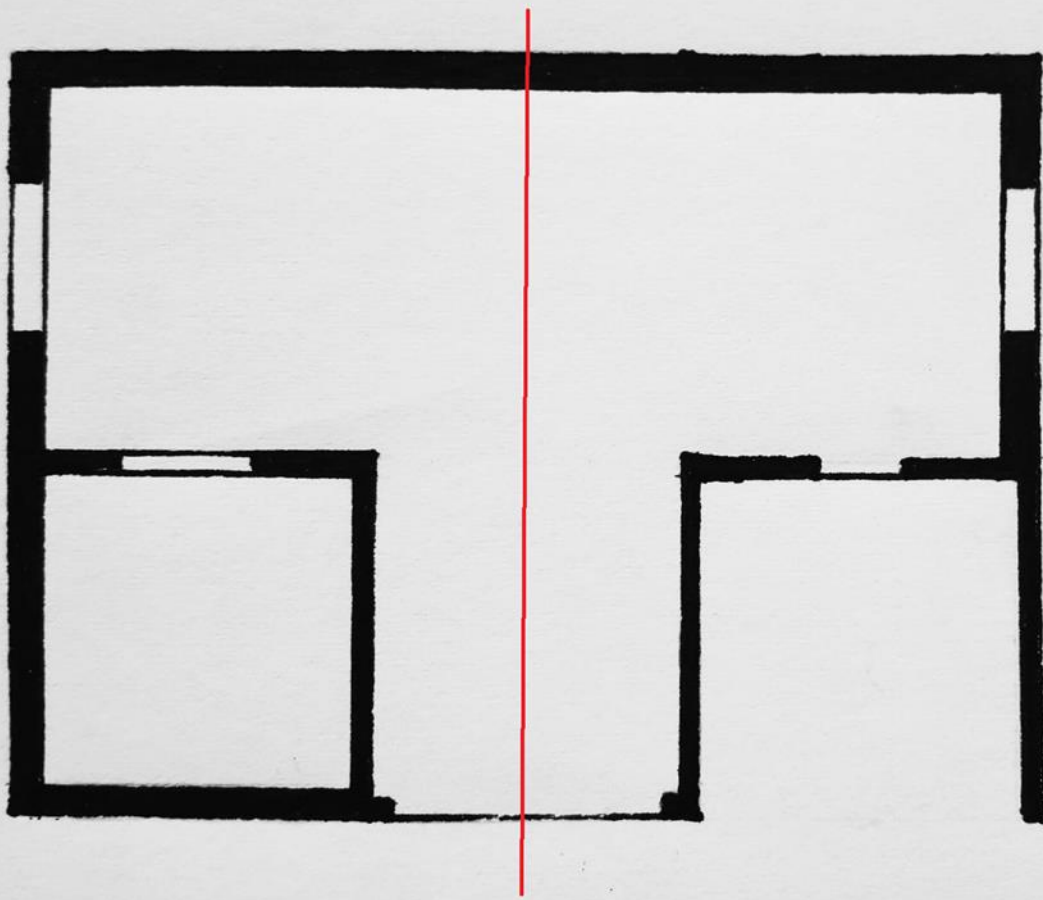


desenho(s) complementares

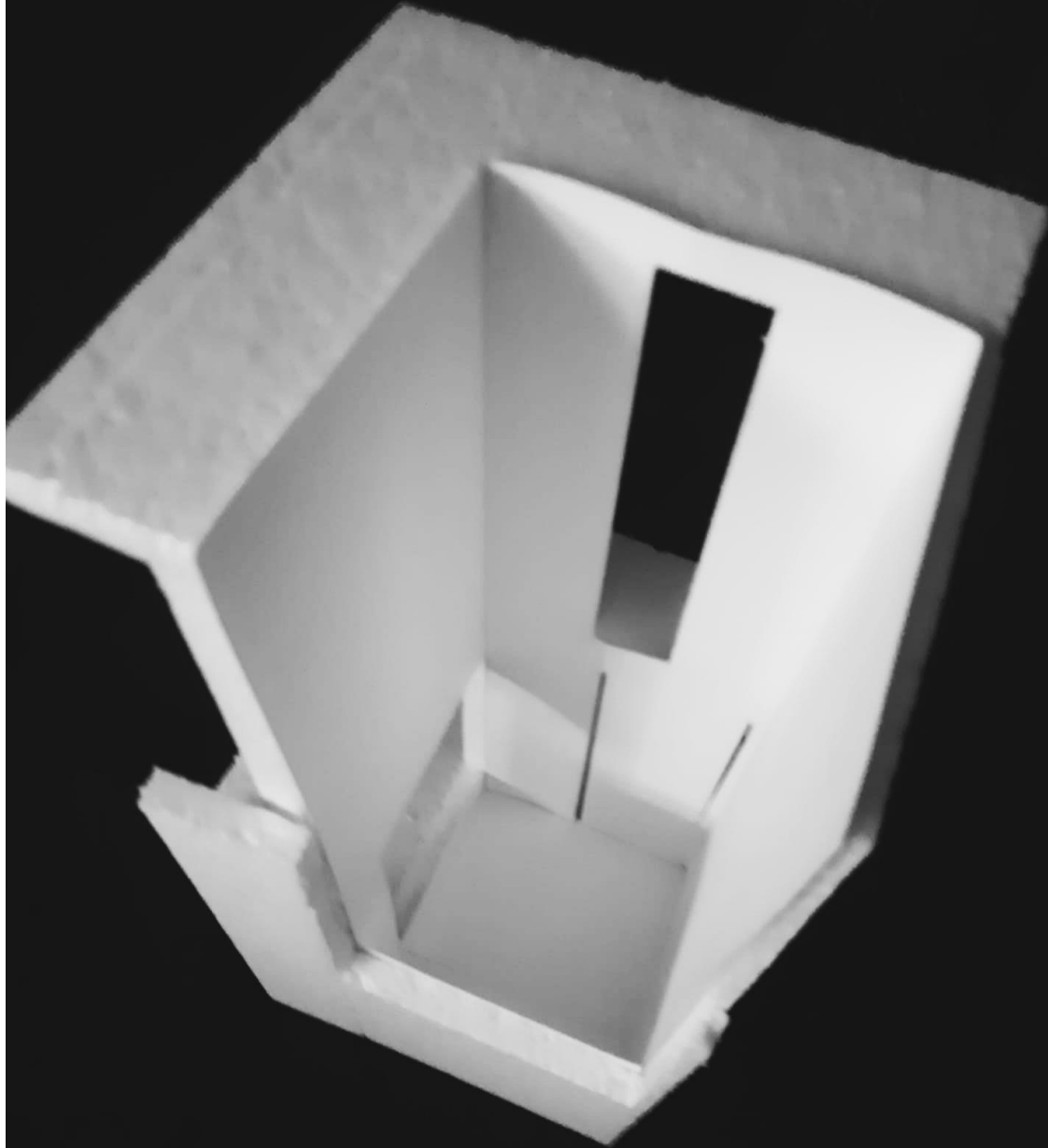






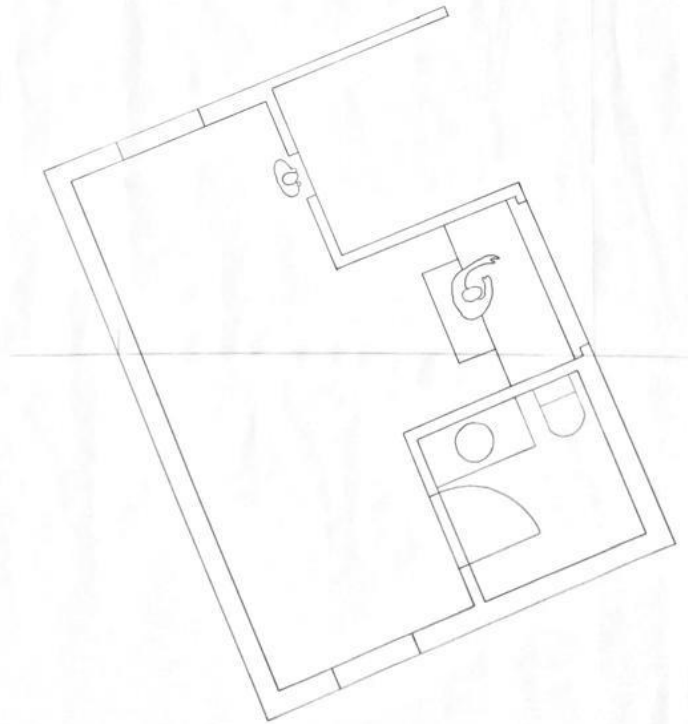
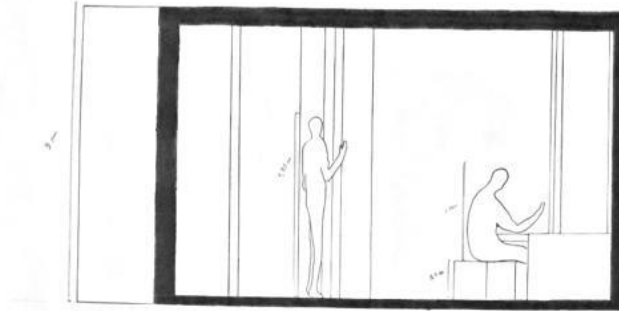


espaço





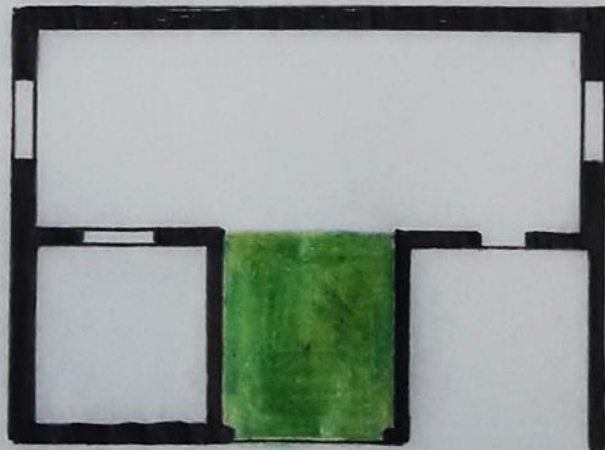
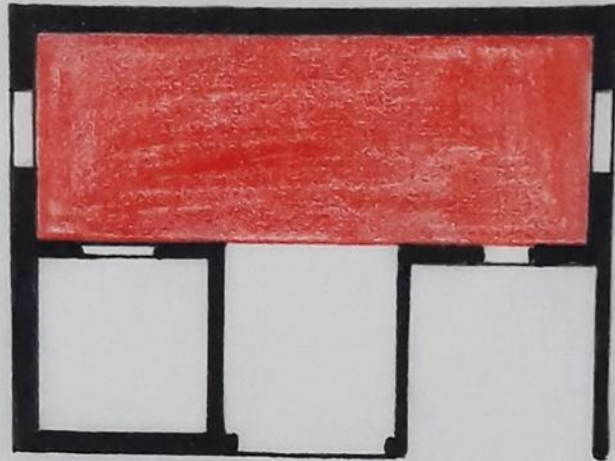




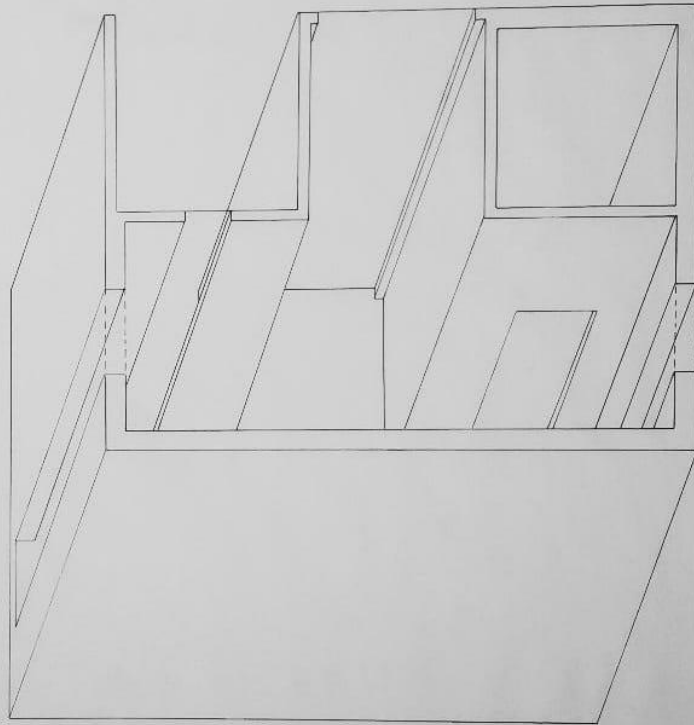
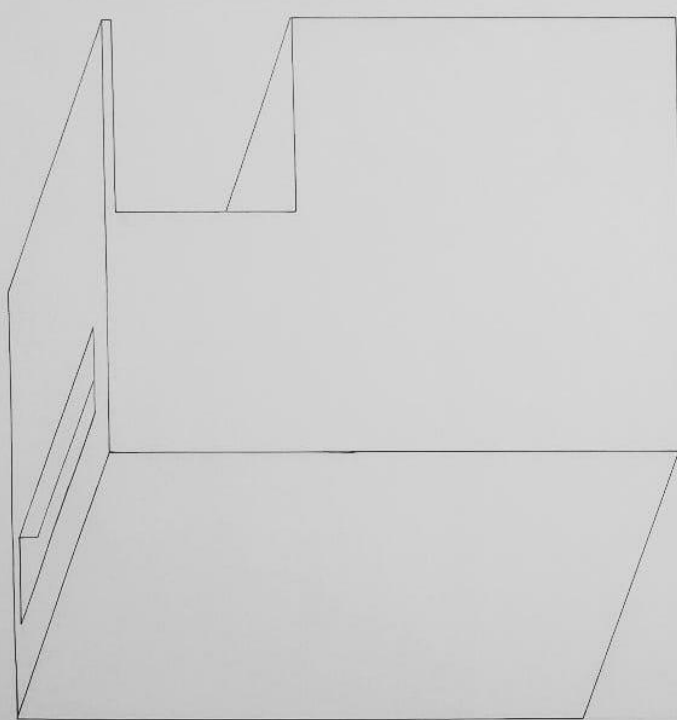
planta(s) e corte e alçado



desenho(s) complementares

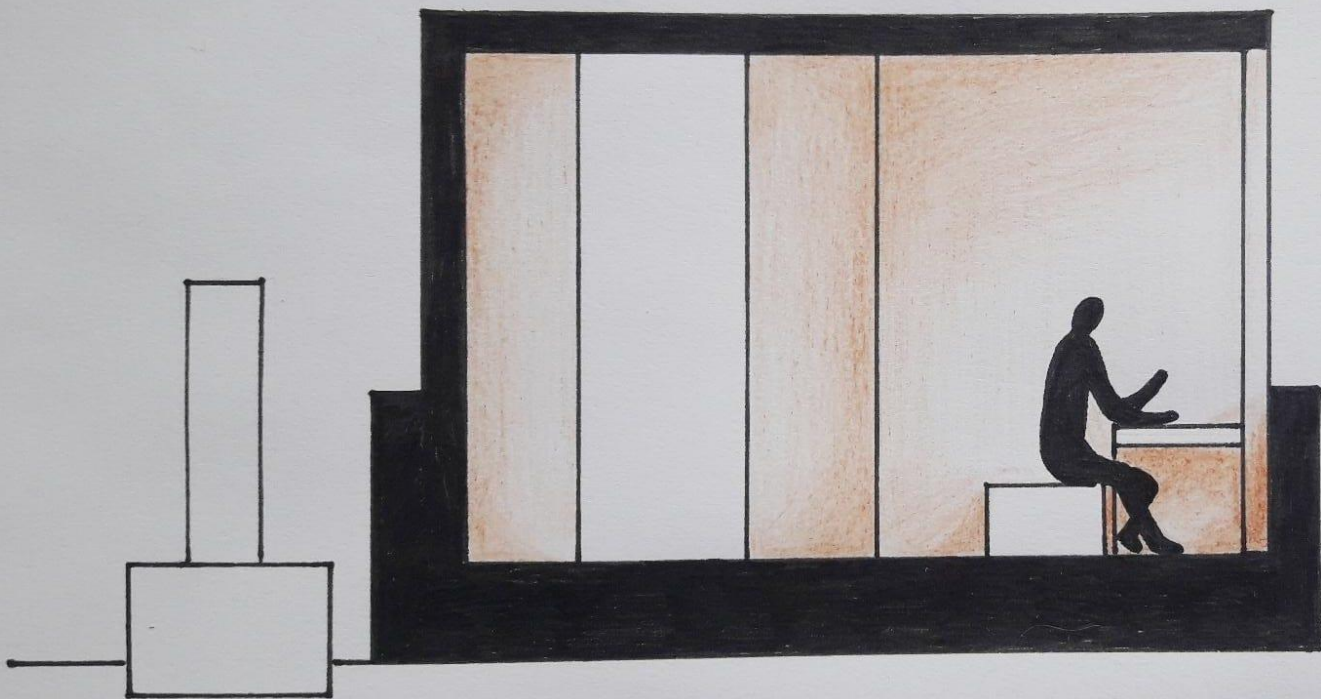


Análise



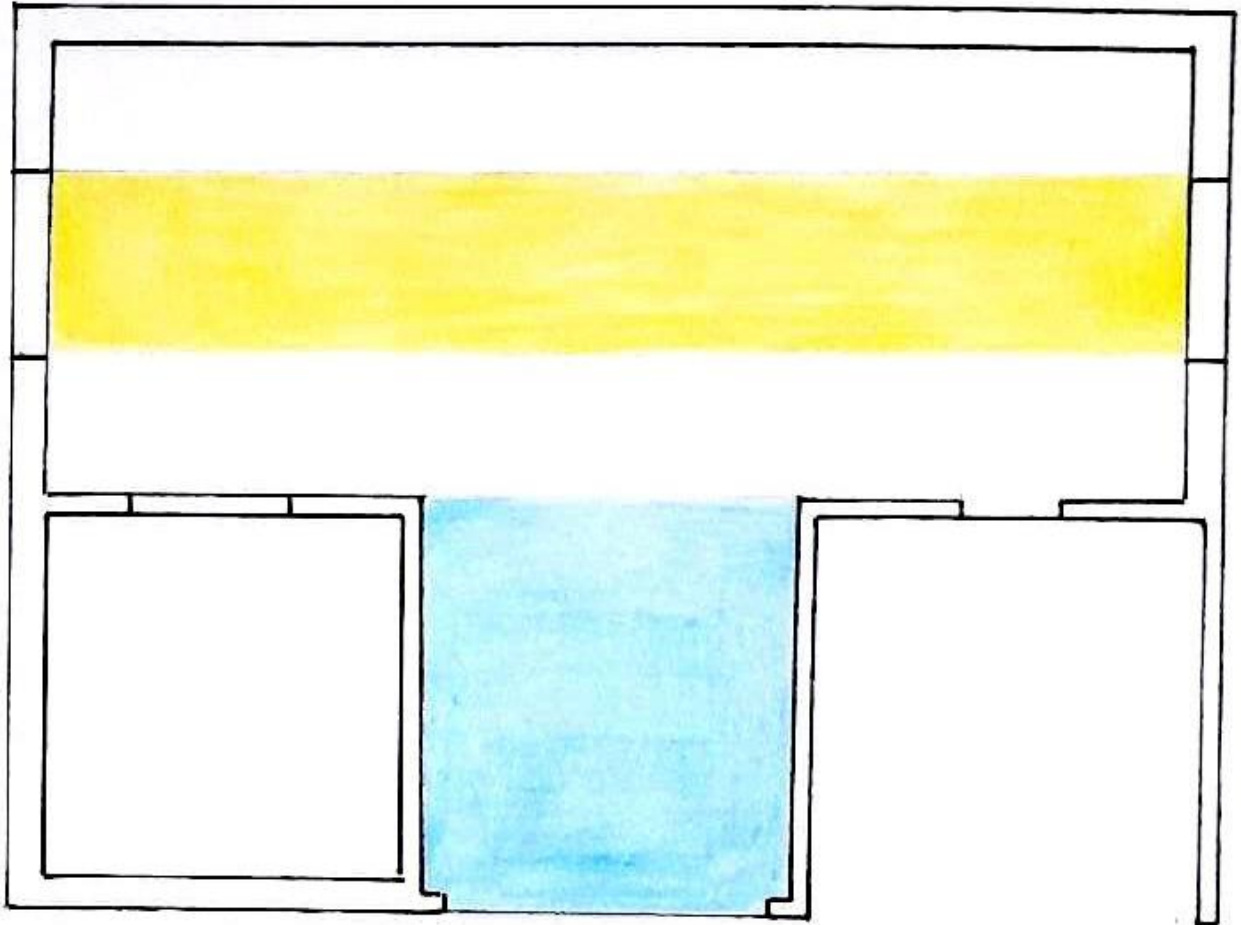
organização geométrica e composição formal







luz





-  Zona de permanência
-  Zona de passagem

Zona de passagem e de permanência





Desenho síntese



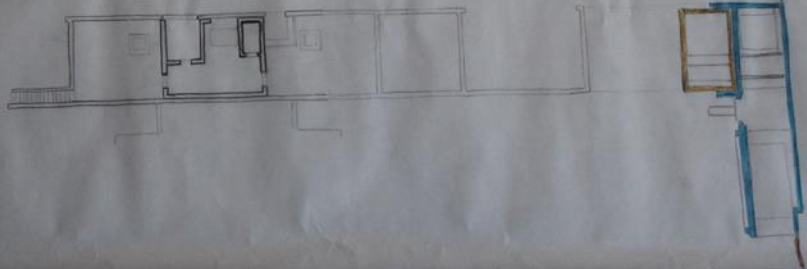
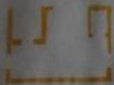
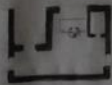
Narrativa descriptiva

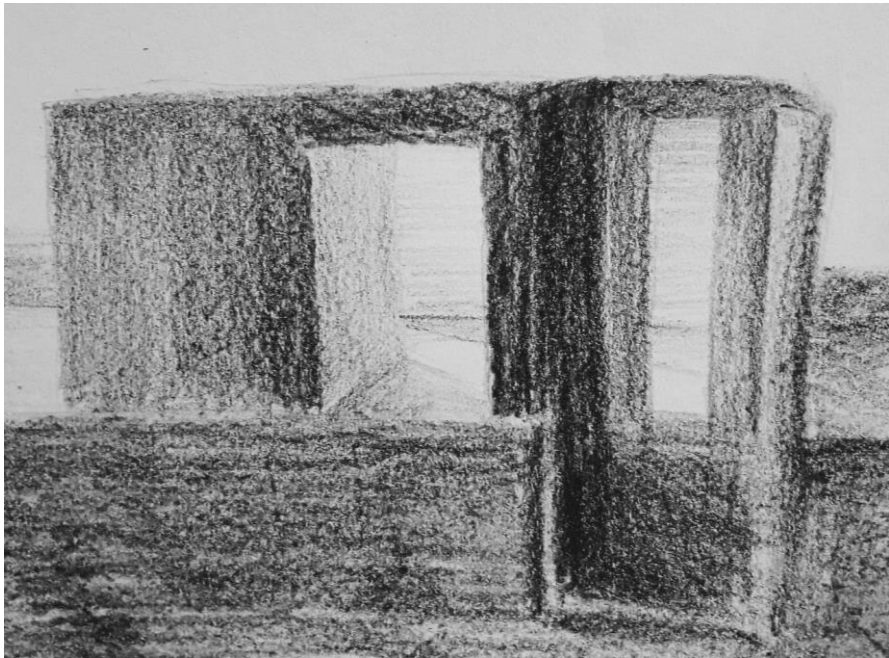
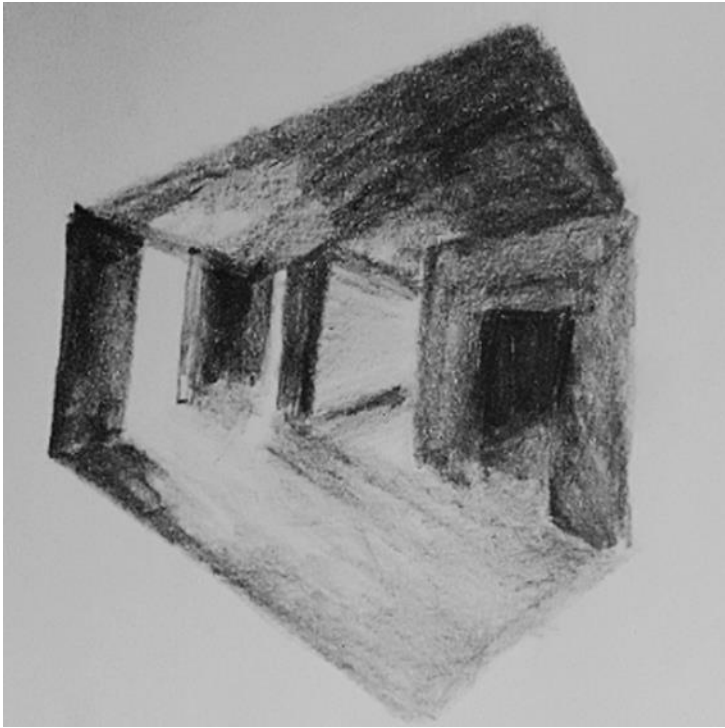
O espaço desenvolvido para pensar tem características únicas que o destacam da casa original, sendo que é o que traz verticalidade a esta, e também a única zona da casa que está virada a norte, sendo um ponto de descoberta do terreno.

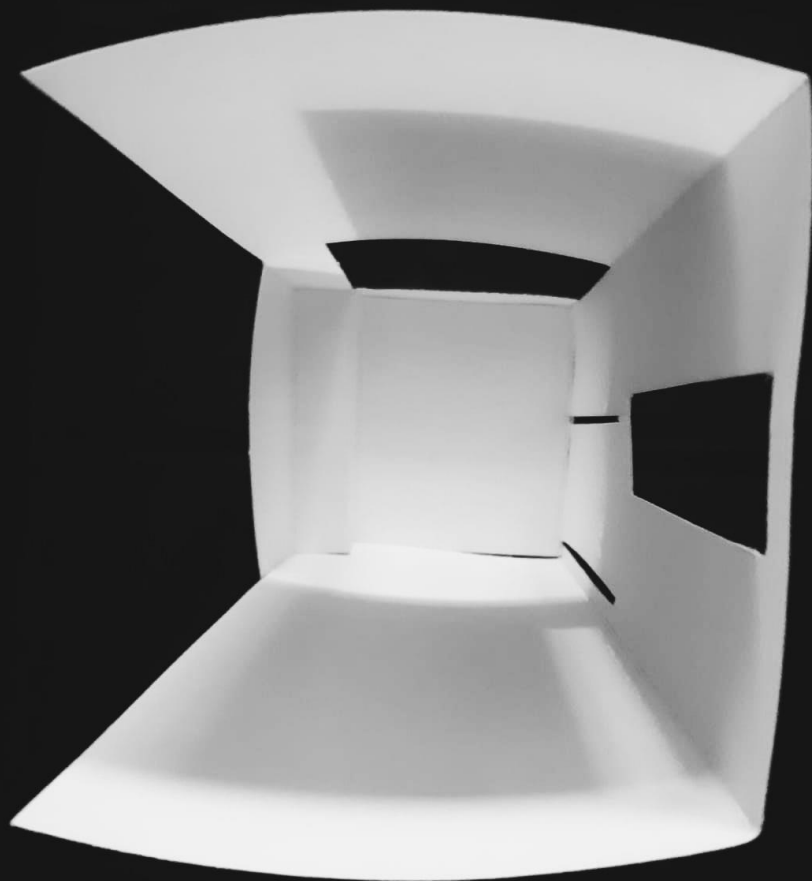
Apesar da sua singularidade, o espaço é também uma réplica do piso inferior, sendo que a sua zona de passagem simula o corredor da casa original e, tal como esta, o pavilhão também tem um eixo de simetria que o divide ao meio.

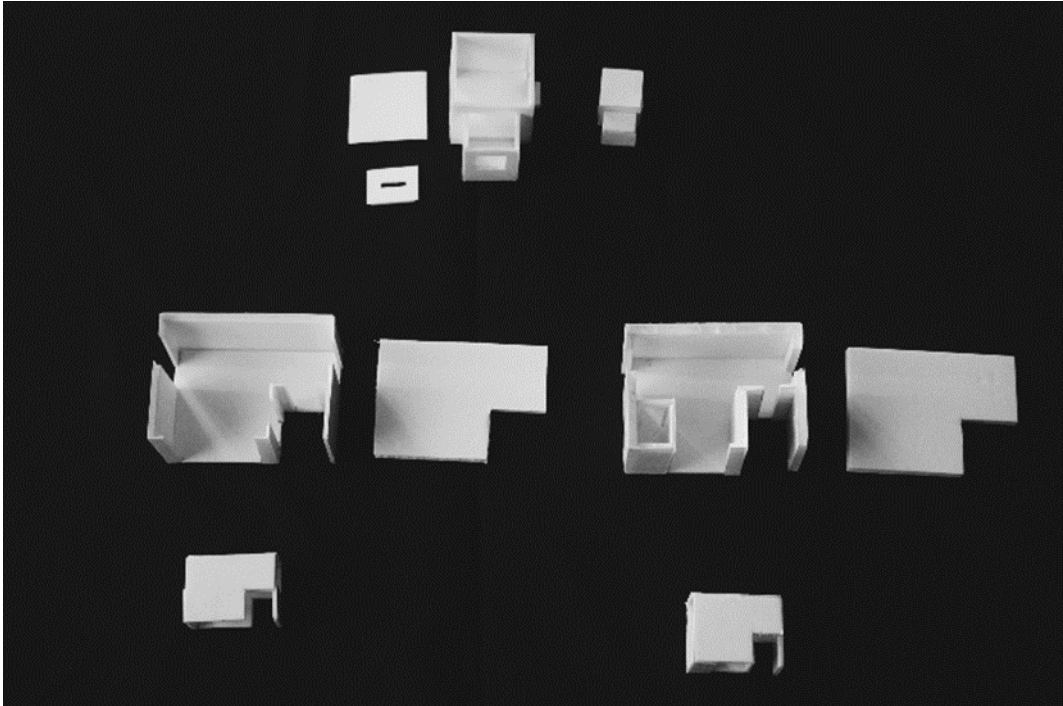
Assim, é criado um equilíbrio neste espaço, tornando-o familiar, mas também novo e misterioso.

Processo















Casas | fase 1

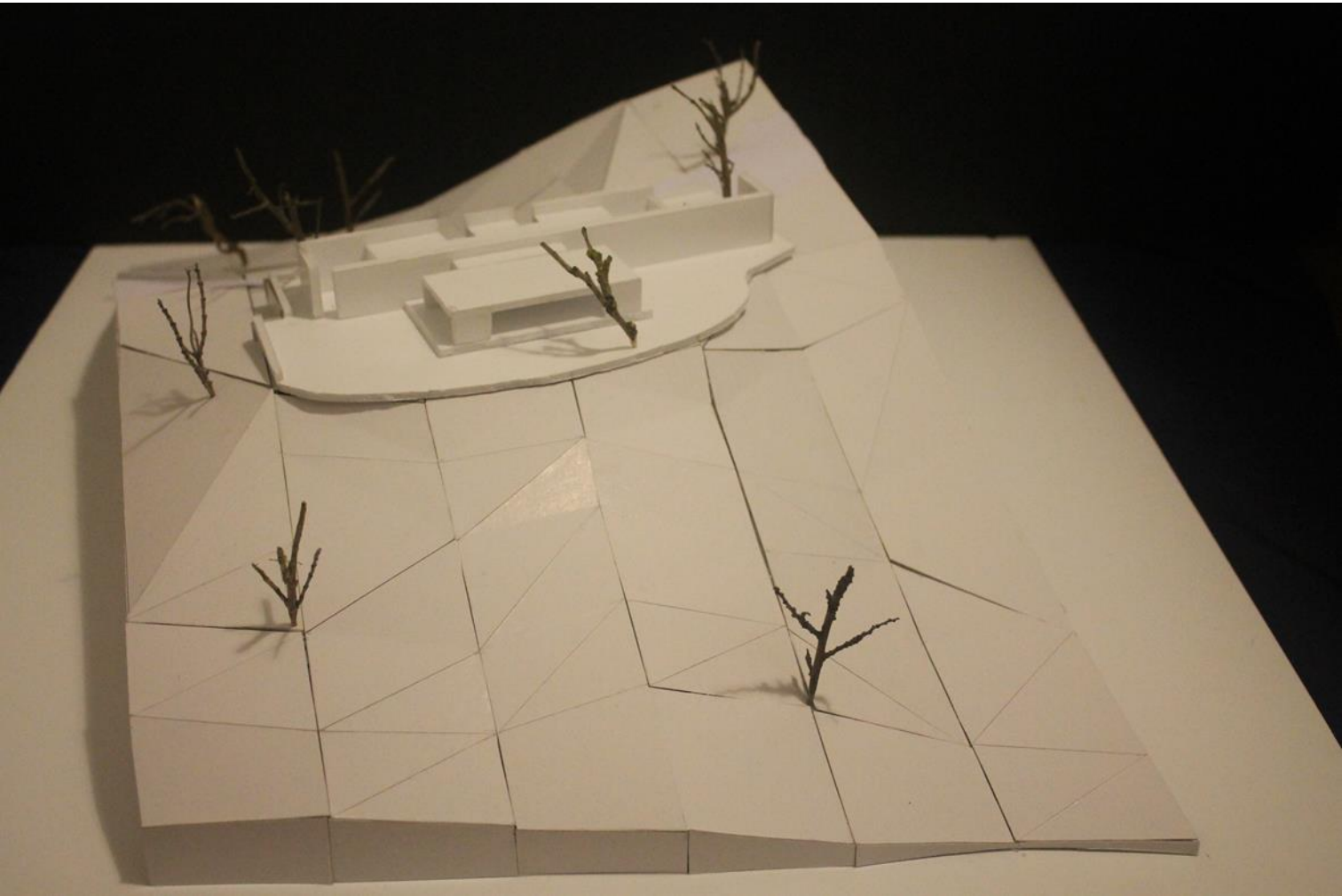
Casa em Melides . José Neves

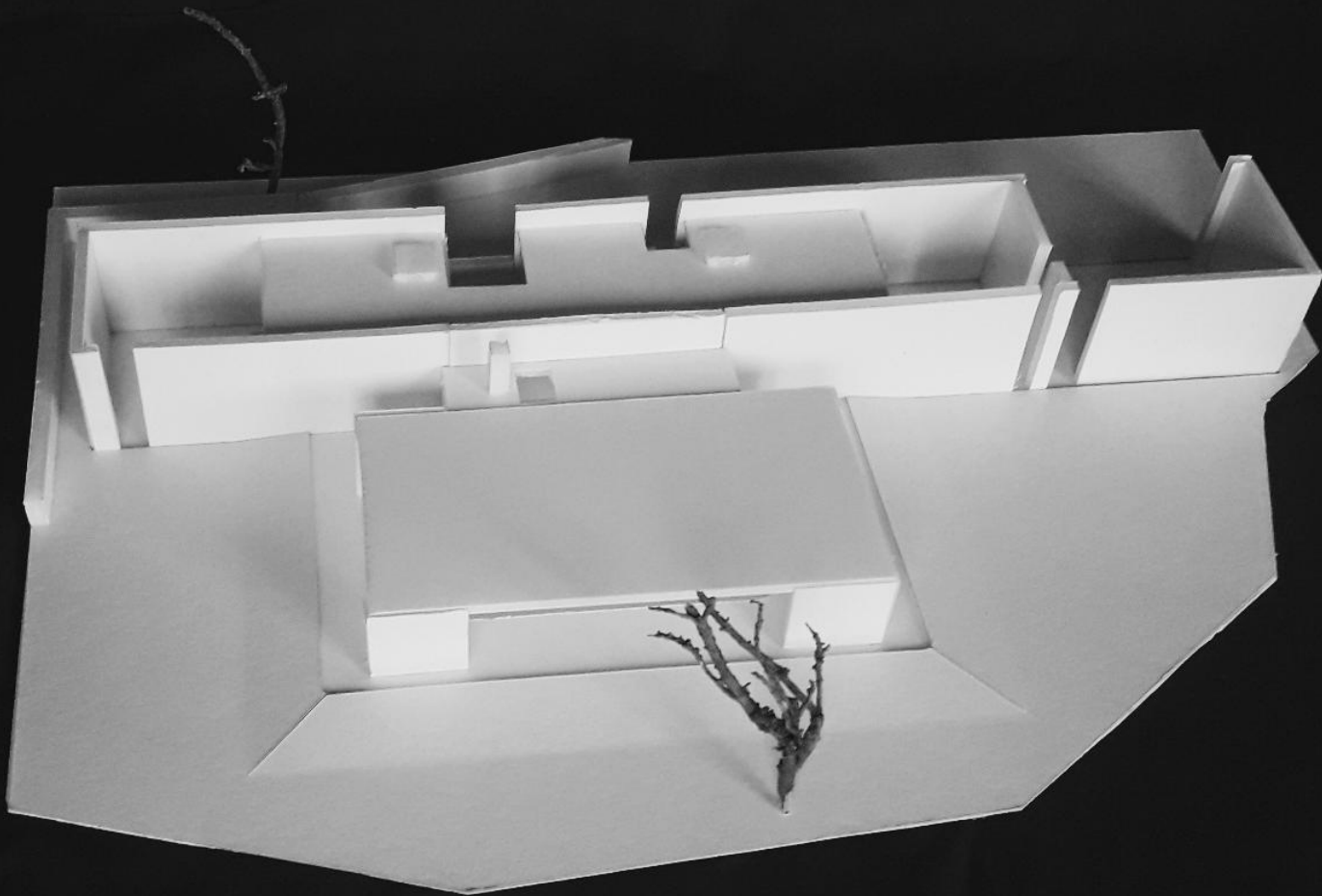
“Nunca encarem as circunstâncias, as limitações como uma espécie de obstáculo. As limitações têm de ser tomadas como estímulos.”

José Neves

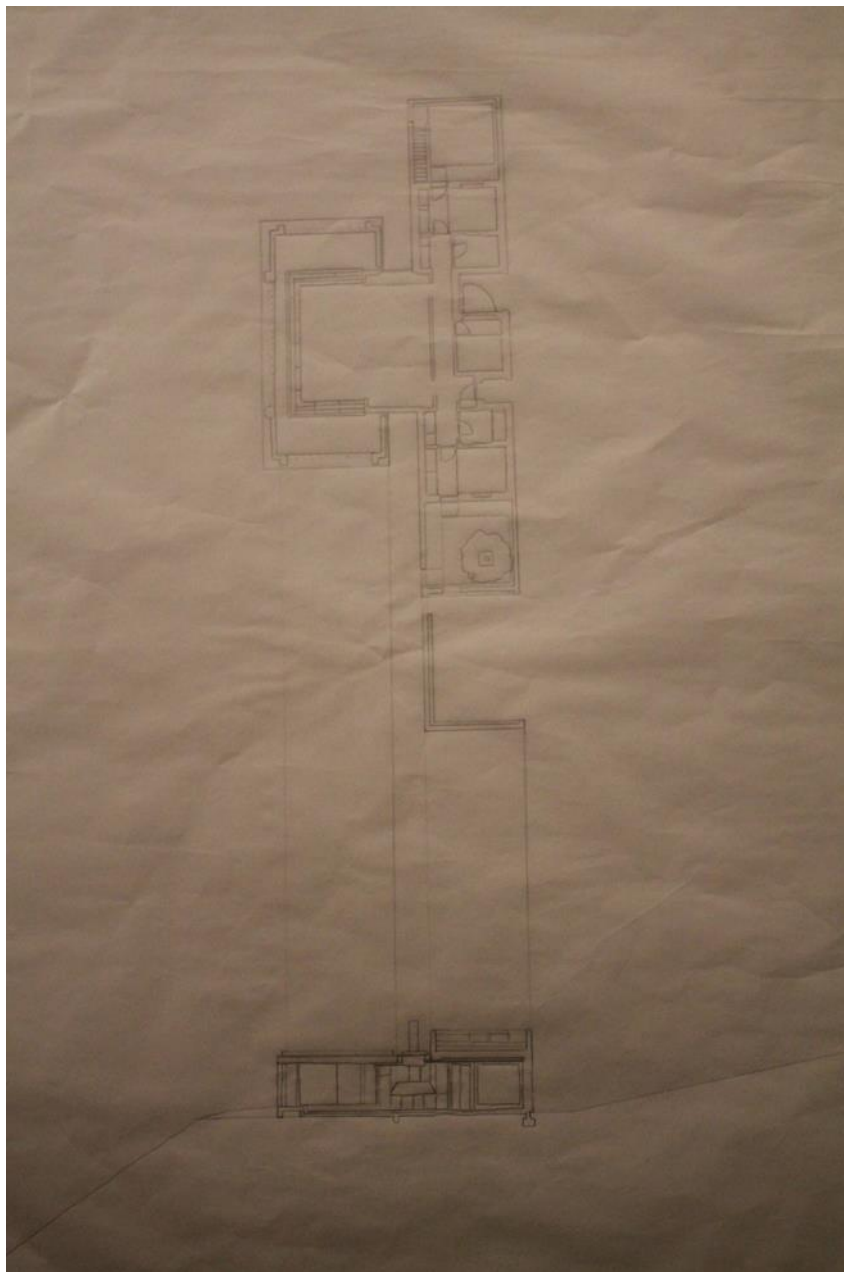


Maquetes

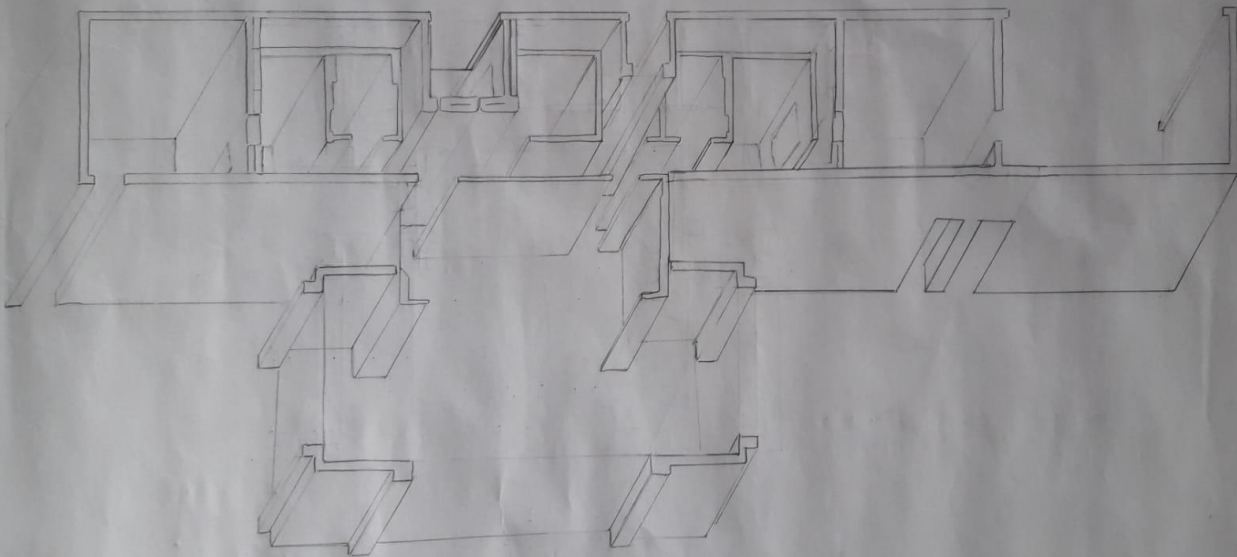




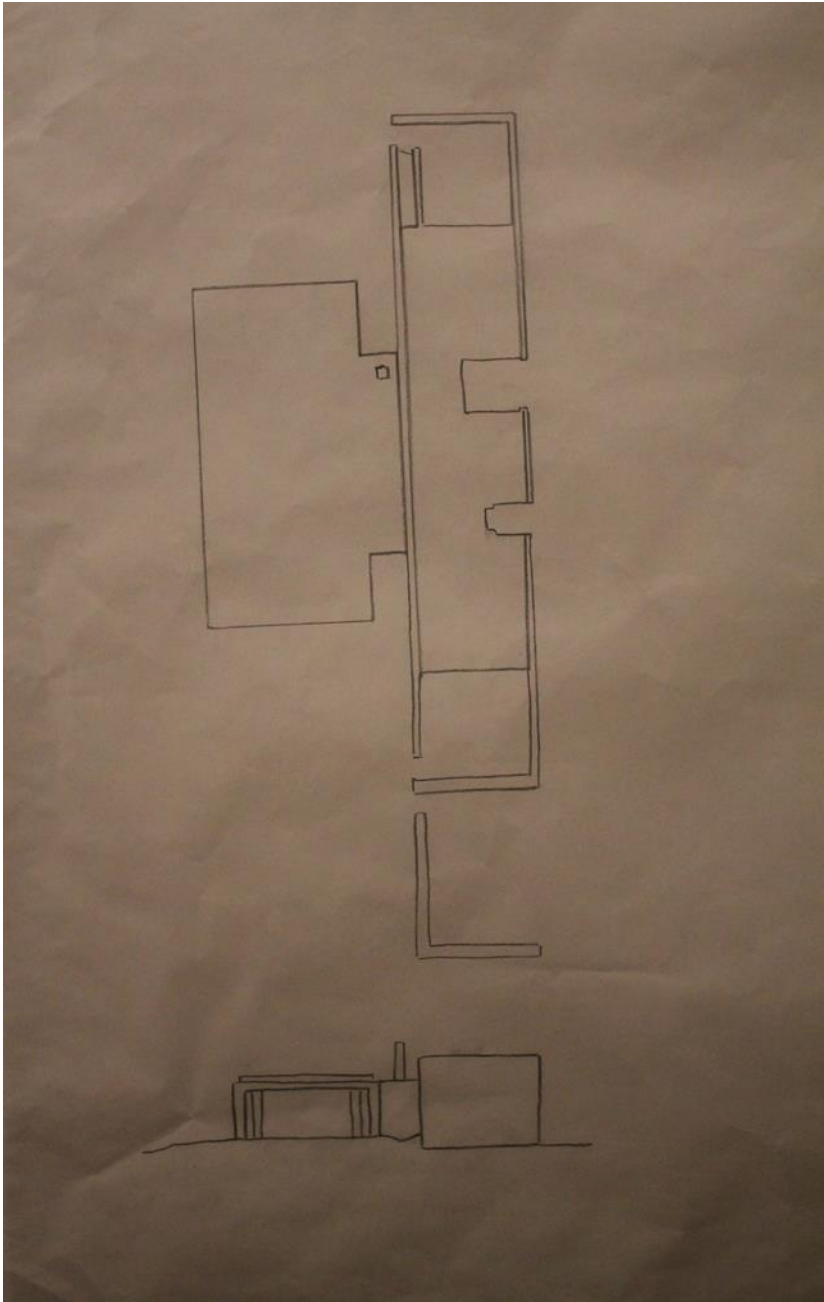
Desenhos de representação



planta e secção articuladas

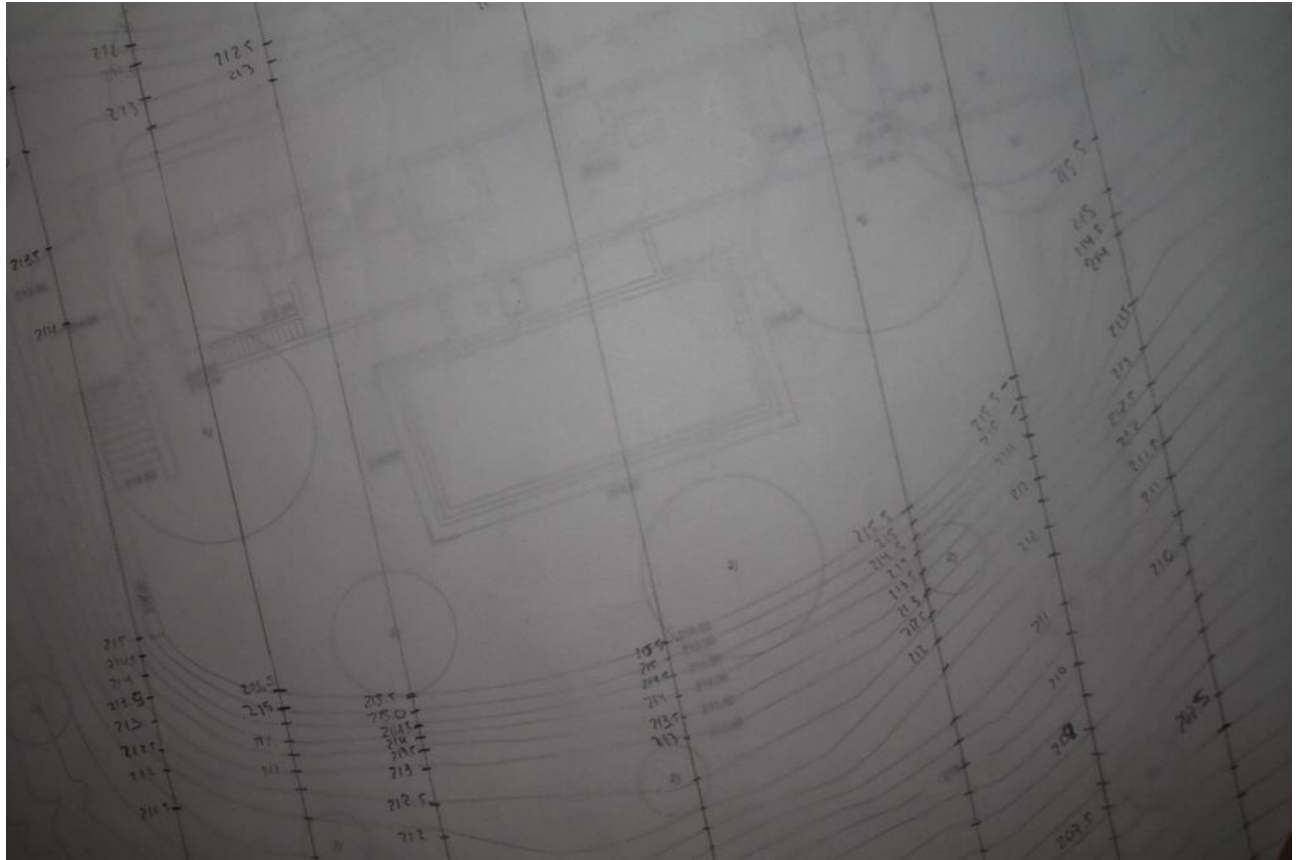


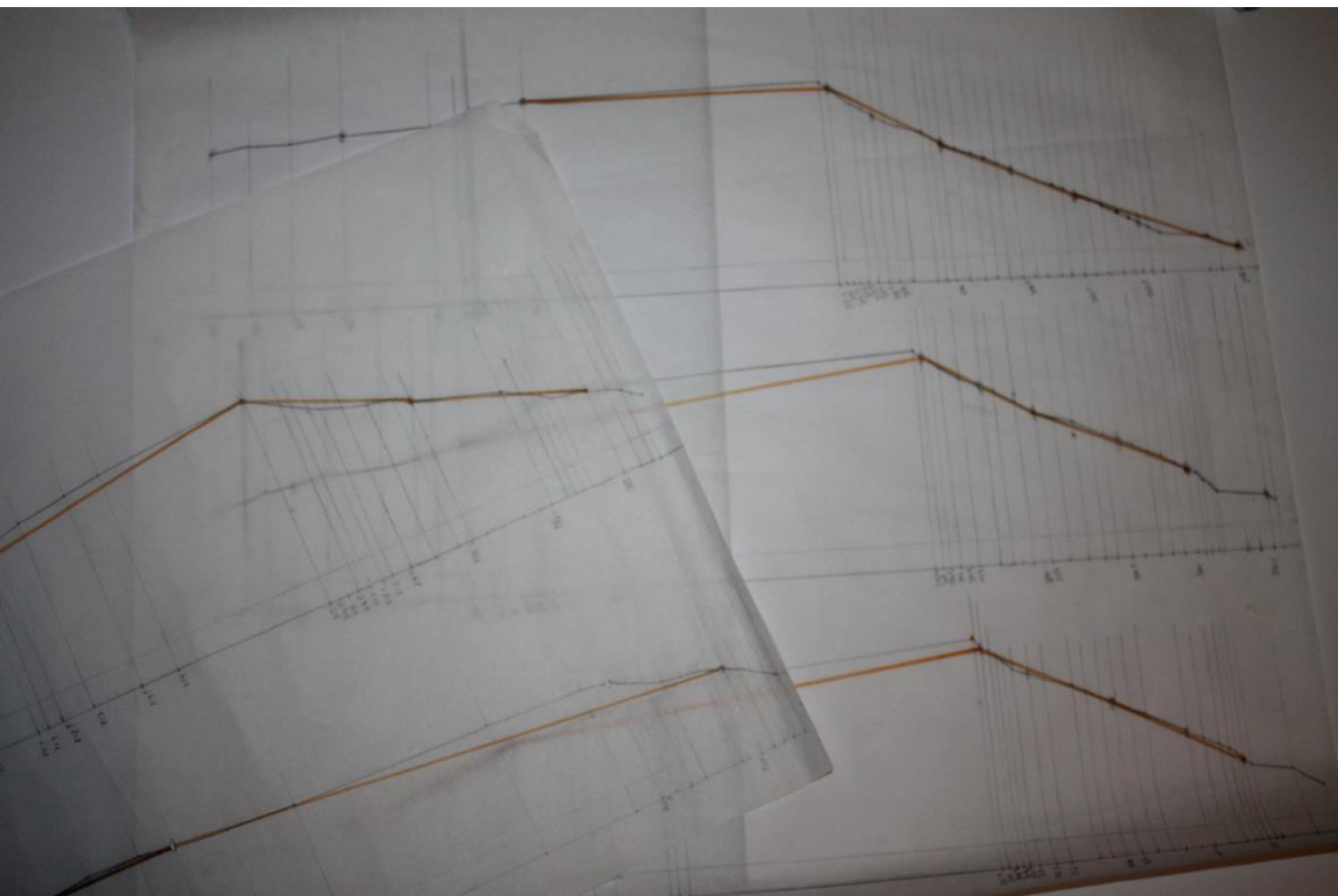
axonometria geral

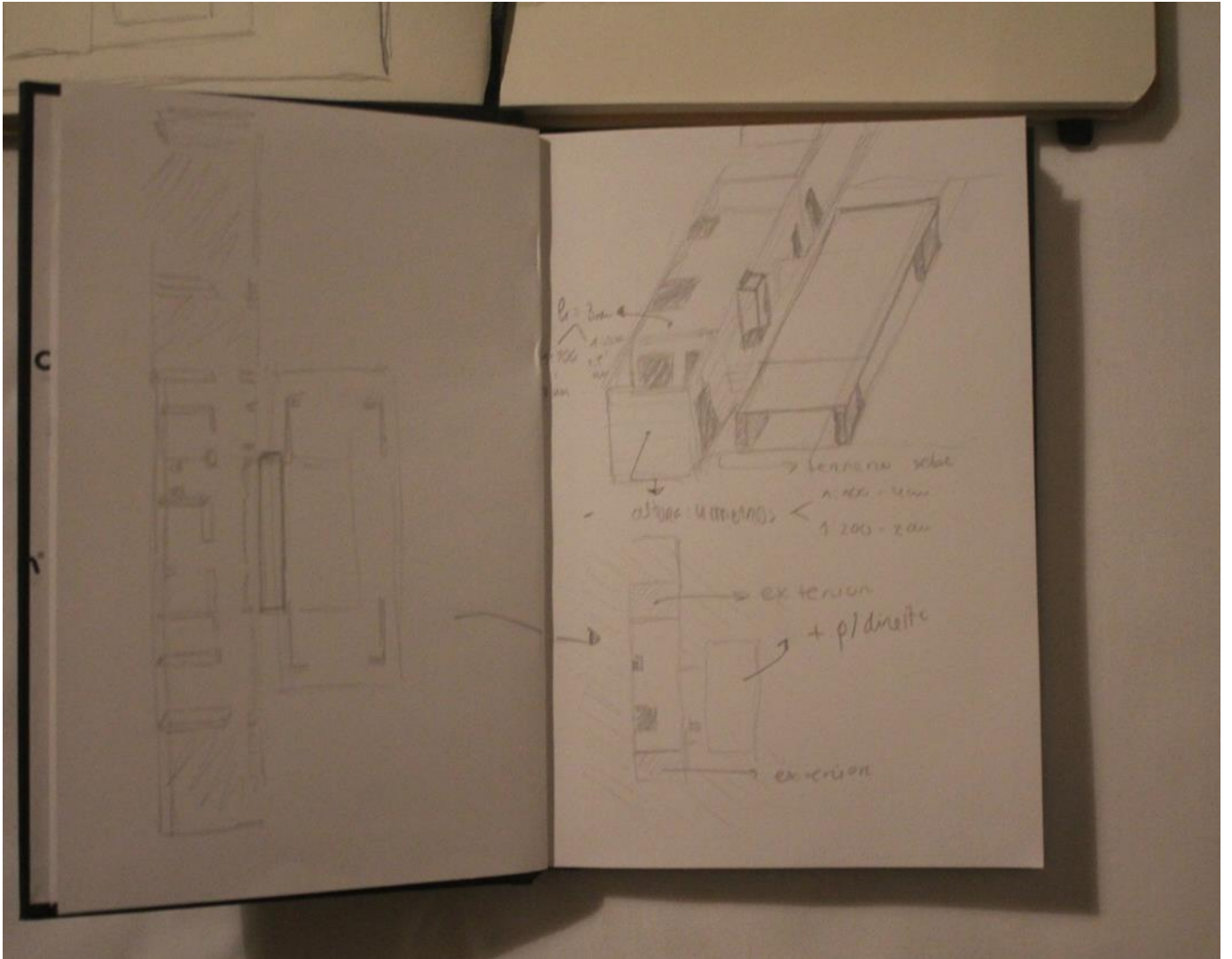


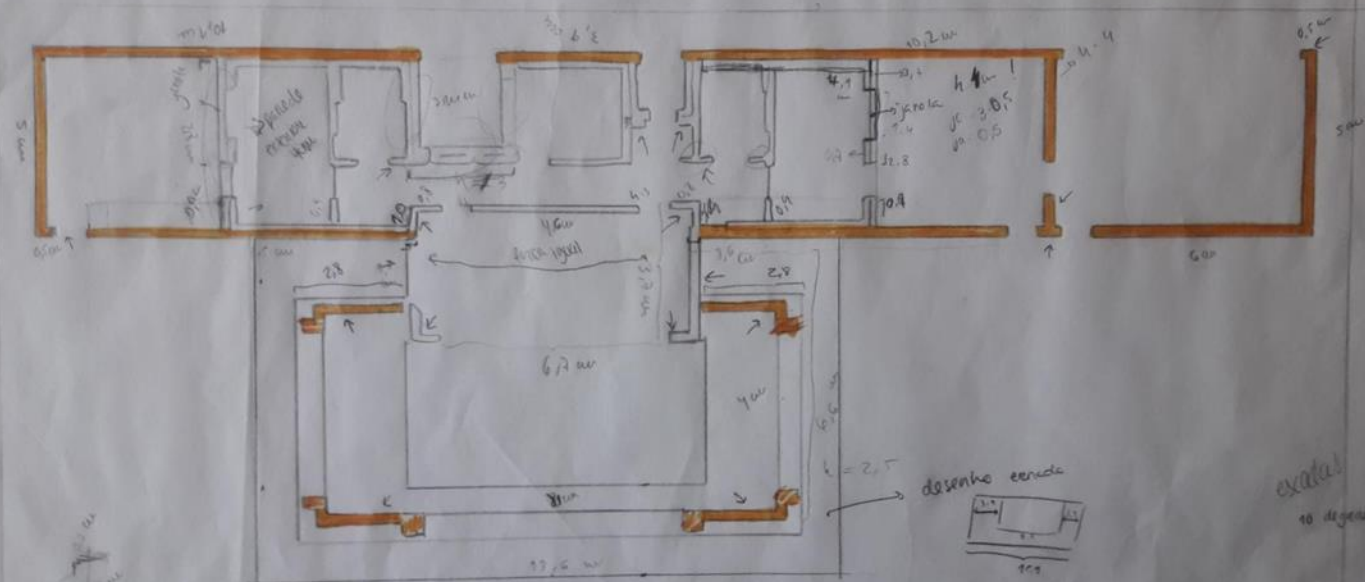
esquiço sintese

Processo





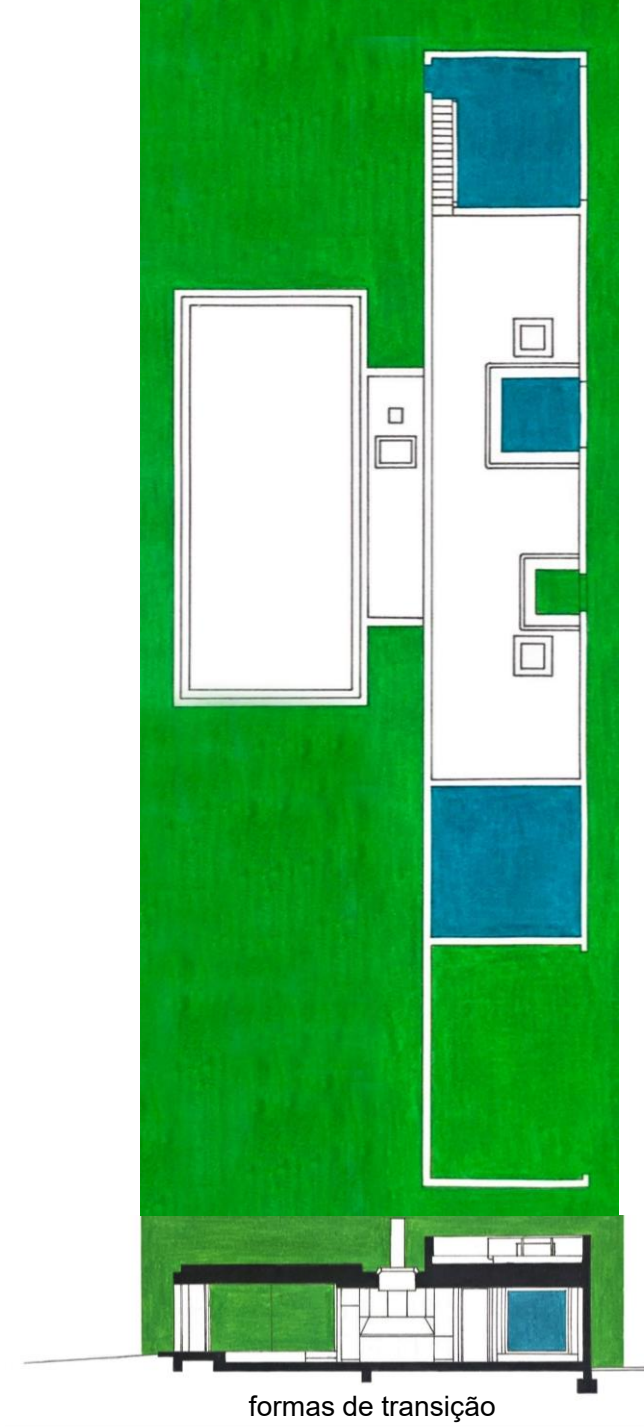







Casas | fase 2

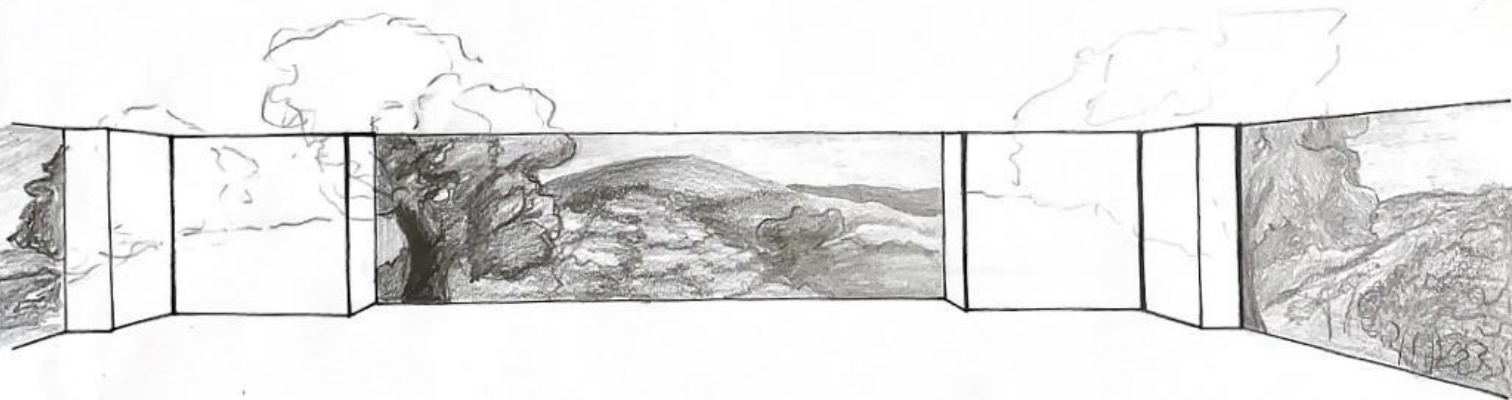
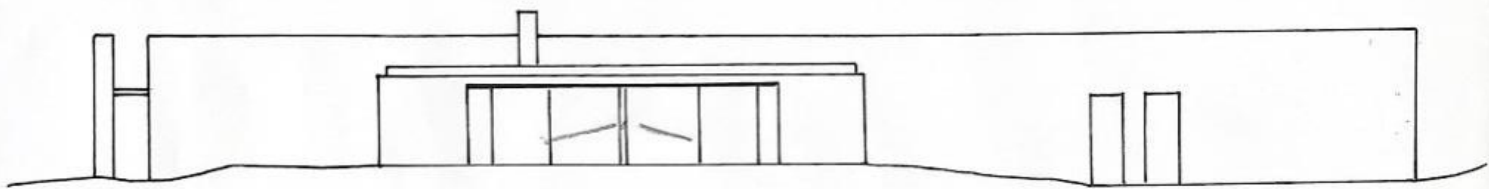
Casa em Melides . José Neves

reflexão interpretativa

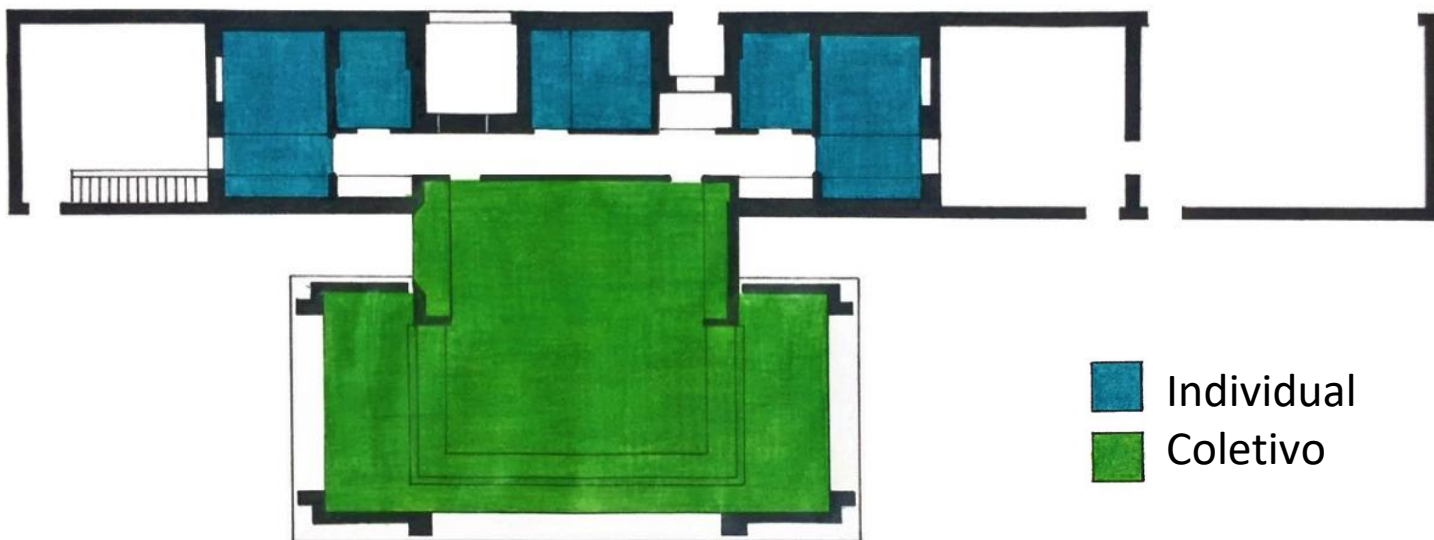


-  Interior
-  Exterior
-  Interior/Exterior

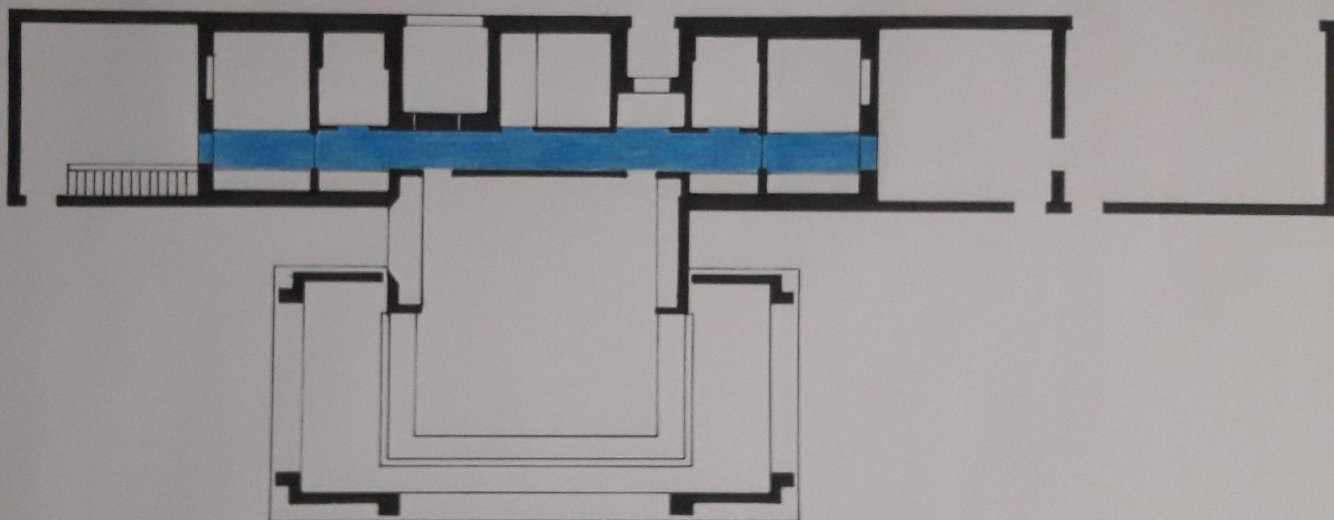
formas de transição



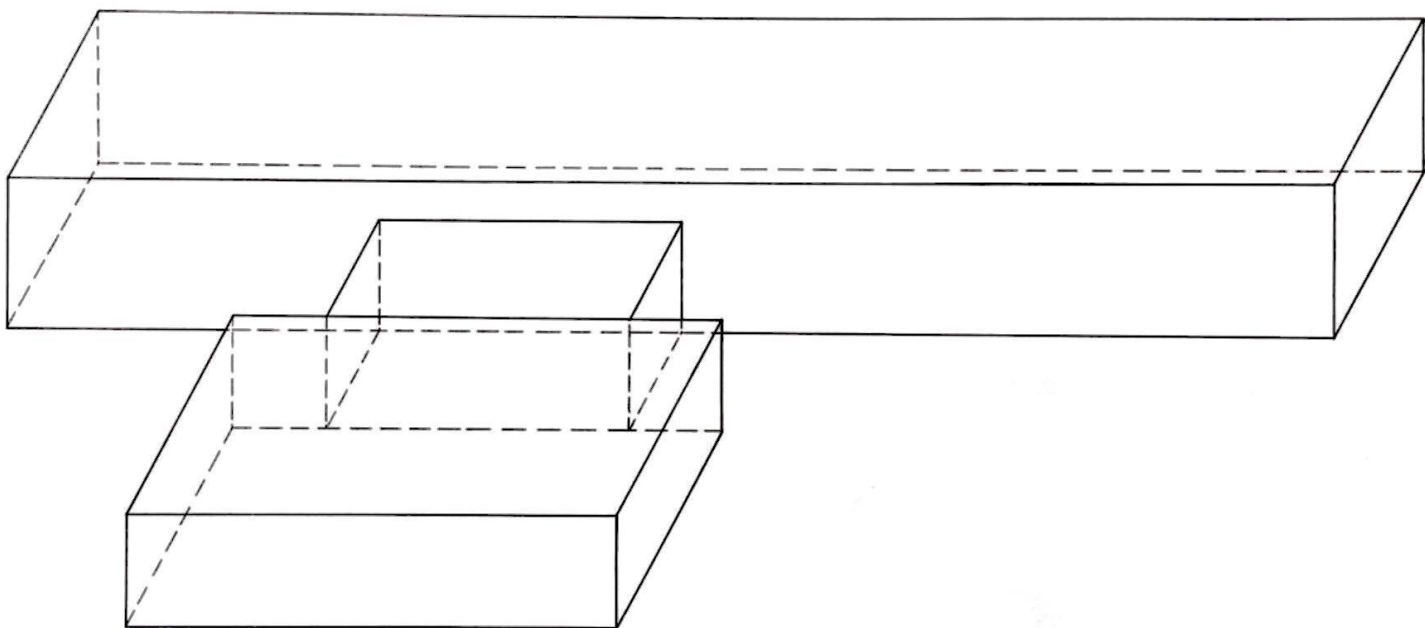
relação com o meio



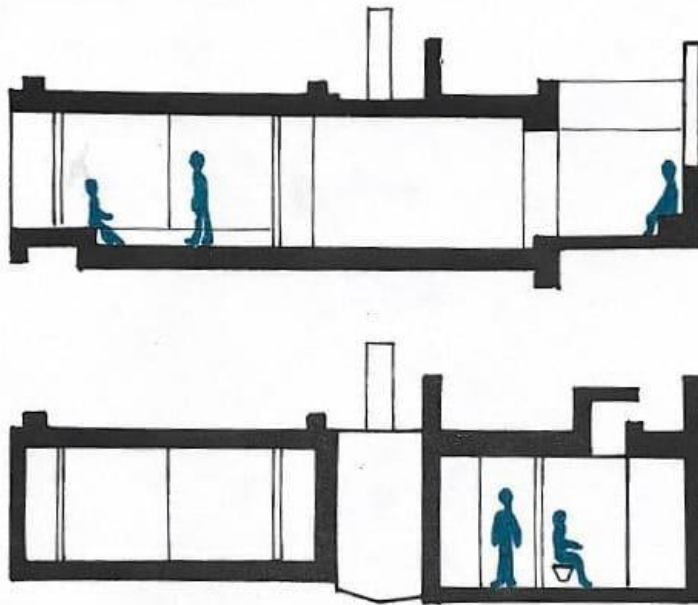
organização do espaço



articulação espacial, passagem e permanência



organização geométrica e composição formal



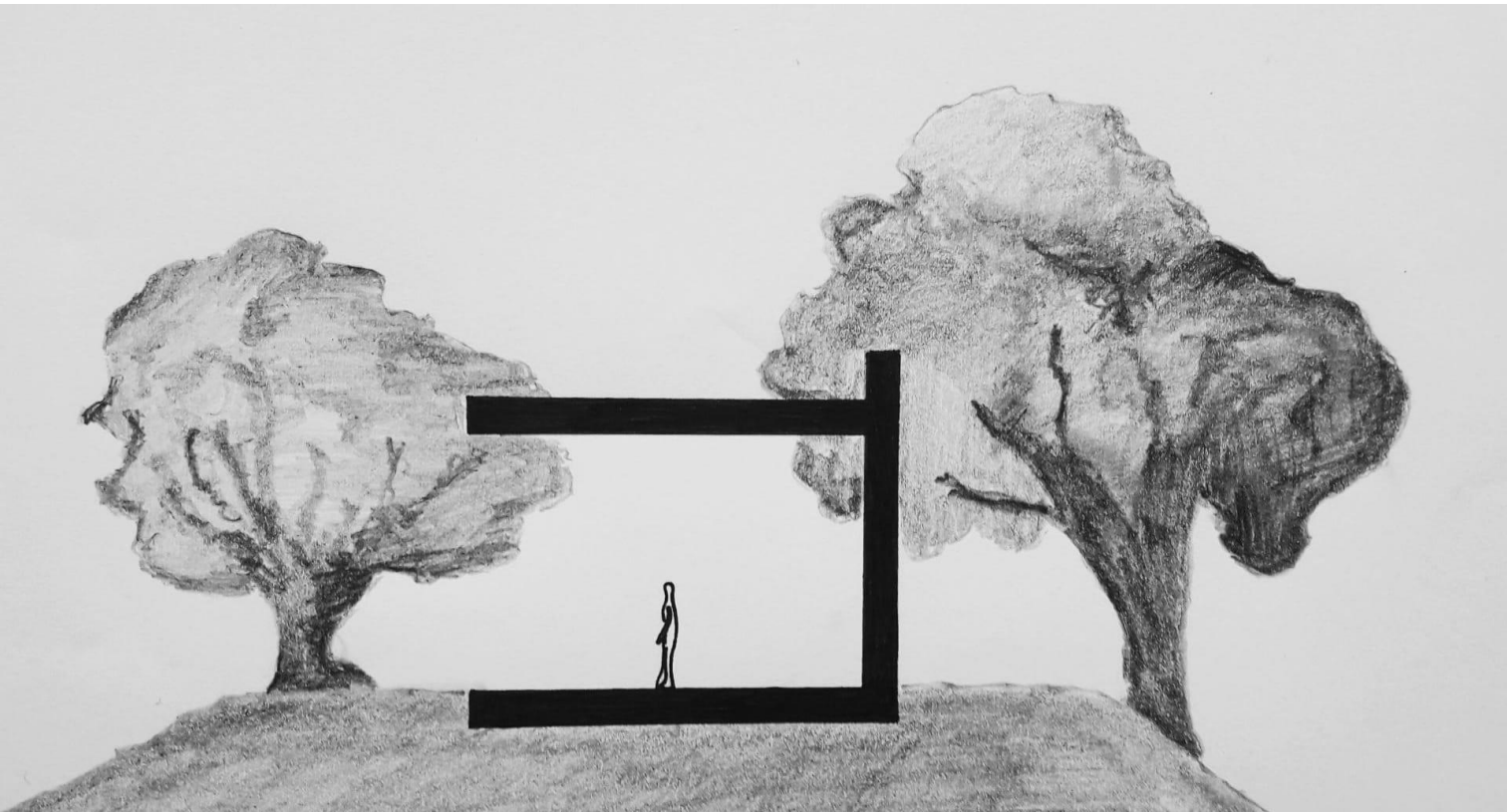
a escala da construção e do espaço interior



luz

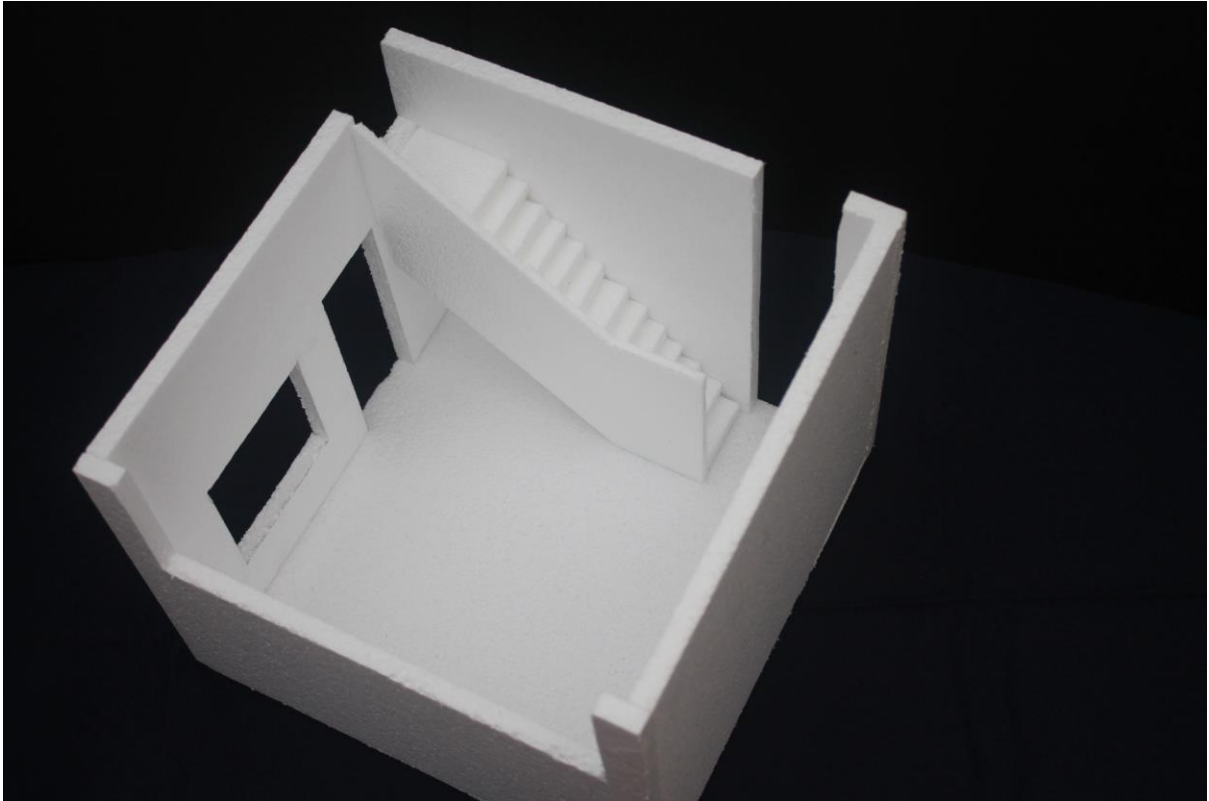


materialidade

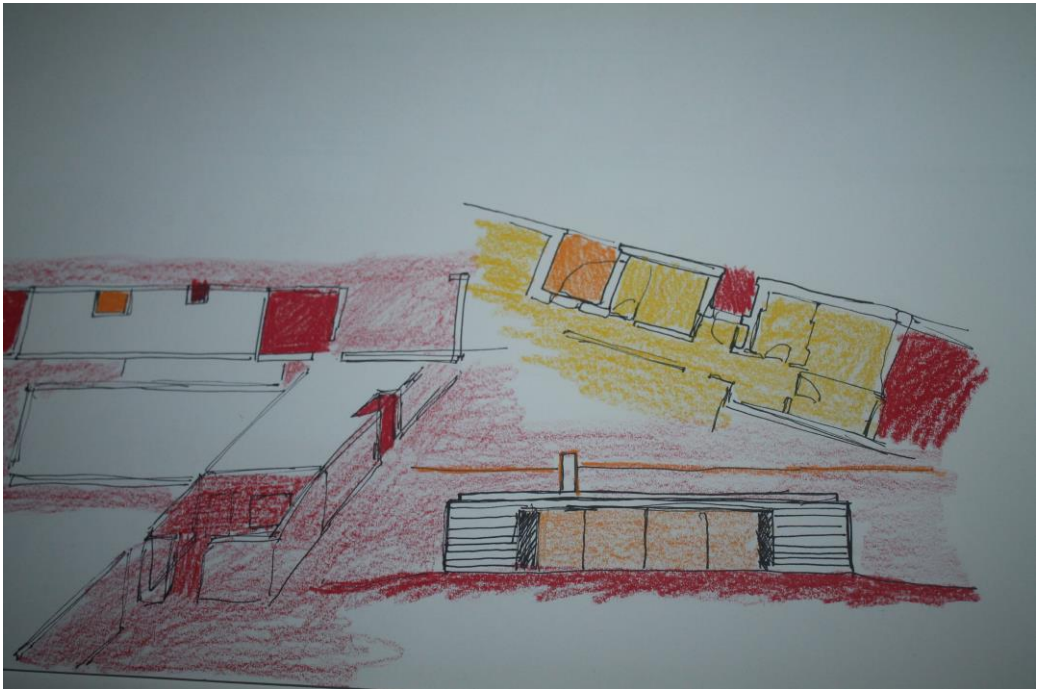


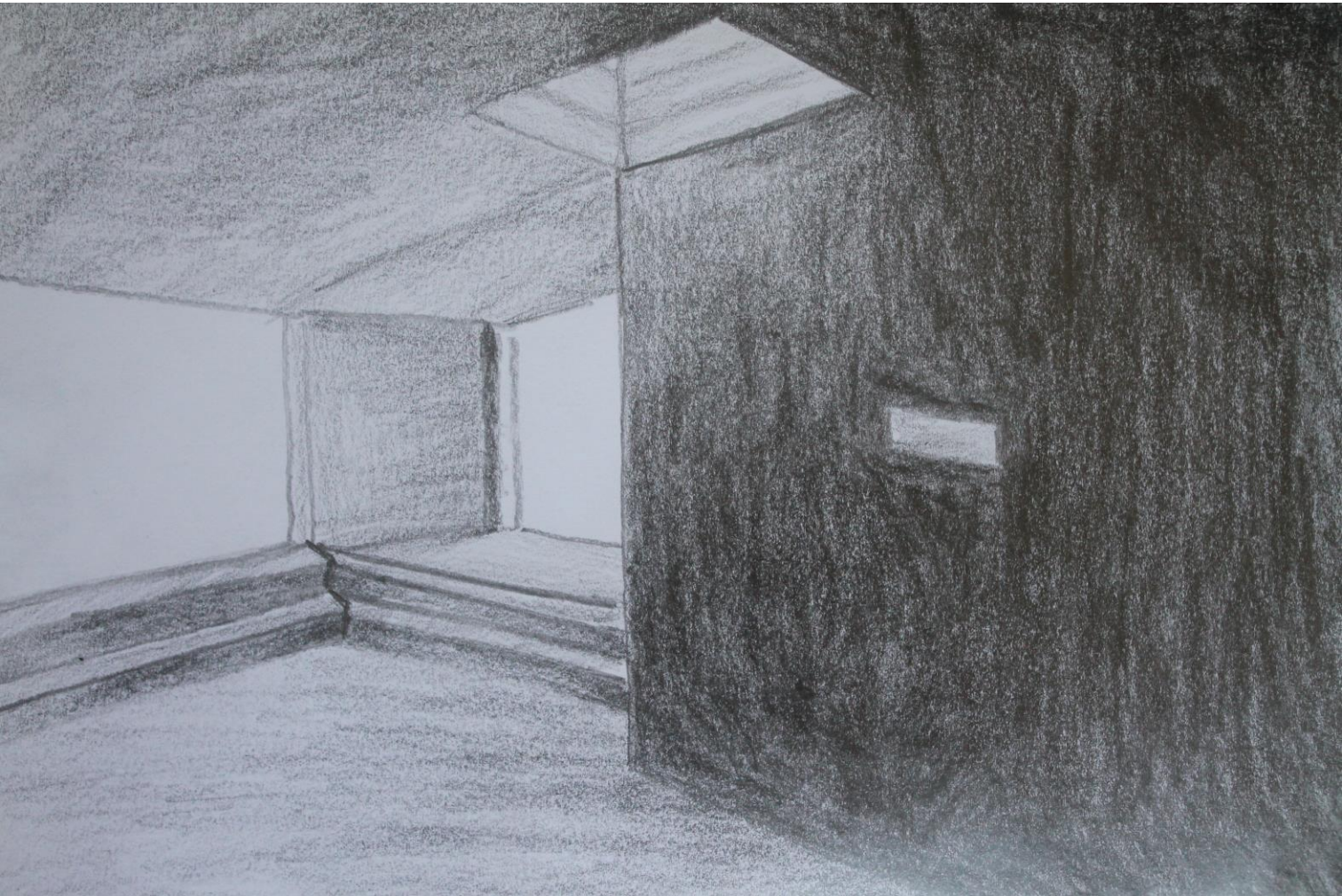
dimensão simbólica e significante

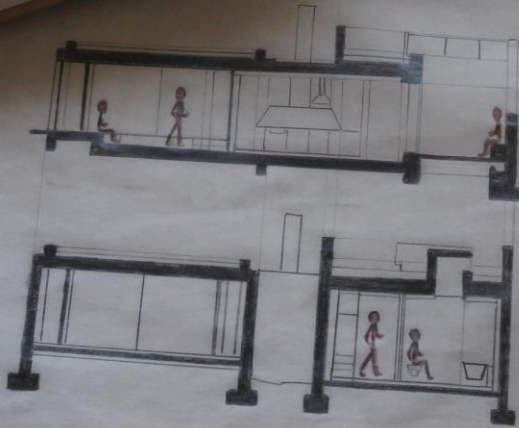
maquetes



Processo







Três fotografias





