

Laboratório de Arquitectura II

2º semestre

Maria Chibeles Antunes

ÍNDICE

Sítio

Fotografias da maquete 1:1000

Desenho de análise do lugar

Fotografias da maquete proposta 1:1000

2ª Fase

Lado Poente

Proposta

Imagem de referência

Citação – Síntese da proposta

Esquiço de síntese

Fotografias da maquete 1:200

Plantas e perfis 1:200

Fotografia da maquete espaço relevante 1:50 (facultativo)

Desenho(s) complementar(es) / visão serial

Fotografias das maquetes de trabalho (várias escalas)

1ª Fase

Lado Nascente

Proposta

Imagem de referência

Citação – Síntese da proposta

Esquiço de síntese

Fotografias da maquete 1:200

Planta e perfil de conjunto

Fotografias da maquete 1:50 / 1:20 / ...

Planta e corte 1:50

Desenho(s) complementar(es) / visão serial

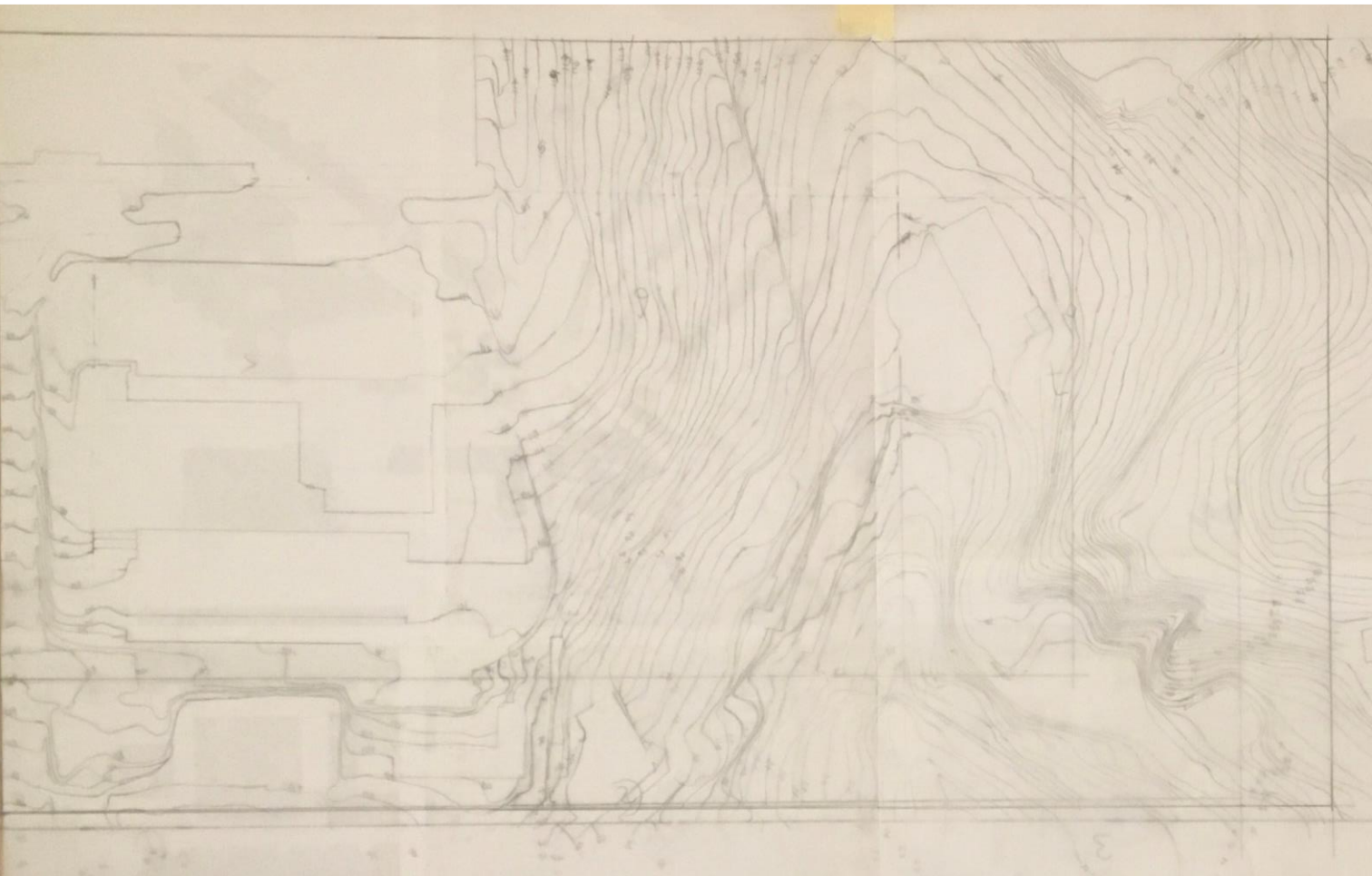
Processo

Desenhos exploratórios mais relevantes

Leituras comentadas

Sítio





desenho de análise do lugar





desenho de análise do lugar



2ª fase

lado poente

Proposta



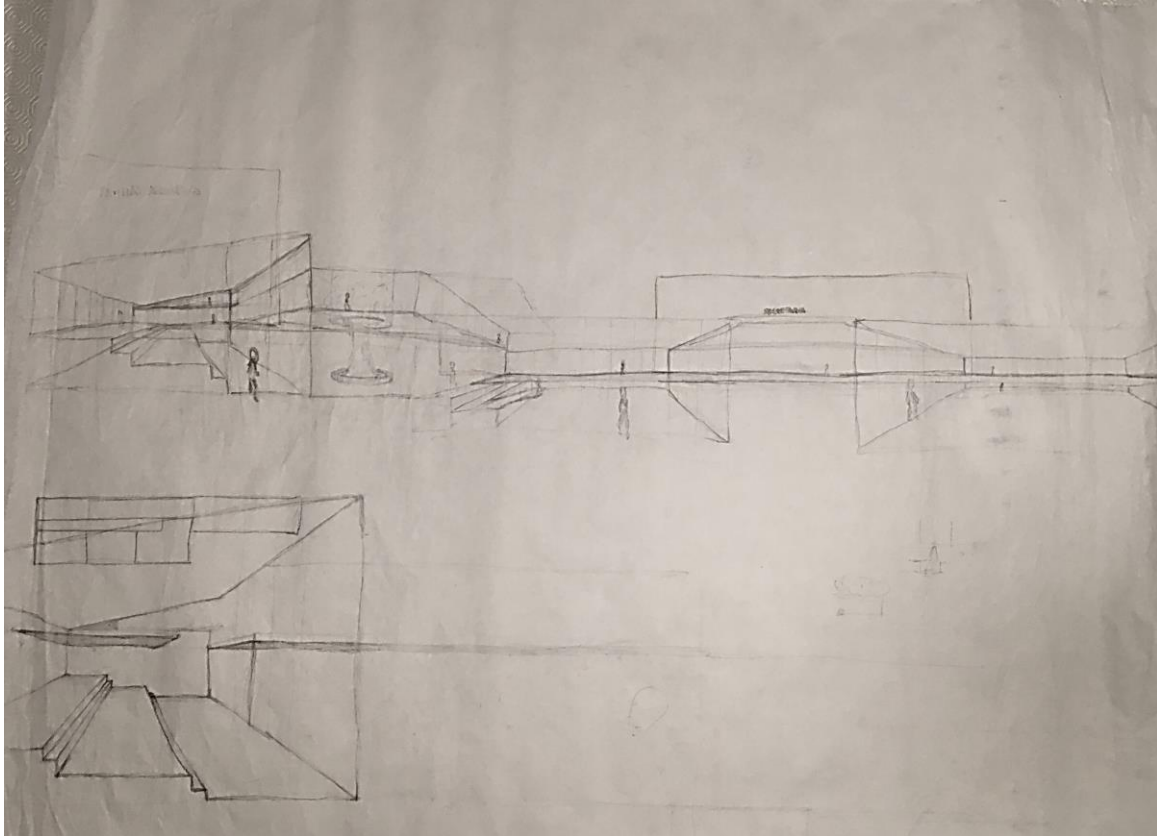
Museu de Arte Moderna do Rio de Janeiro., Afonso Eduardo Reidy



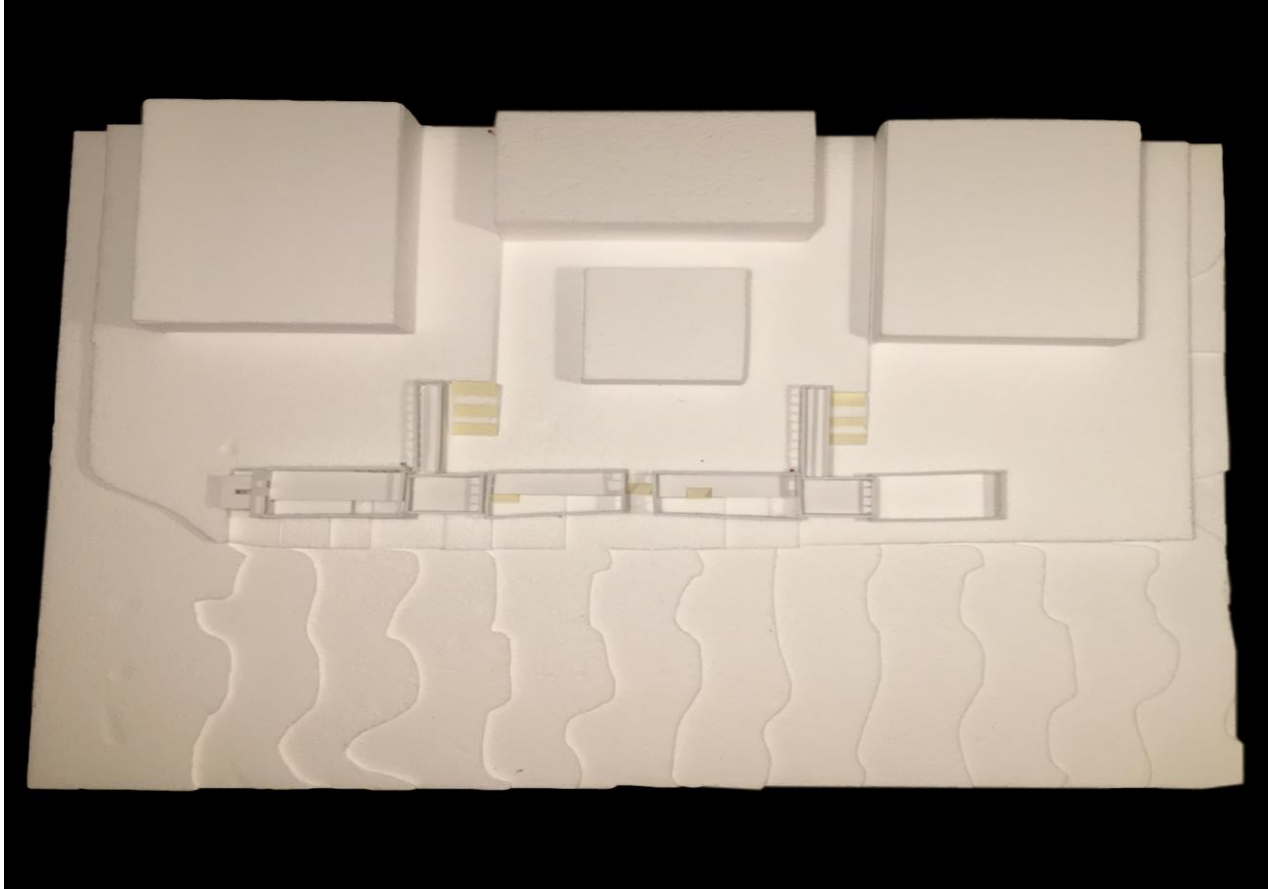
Museu dos Coches, Lisboa, Paulo Mendes Rocha

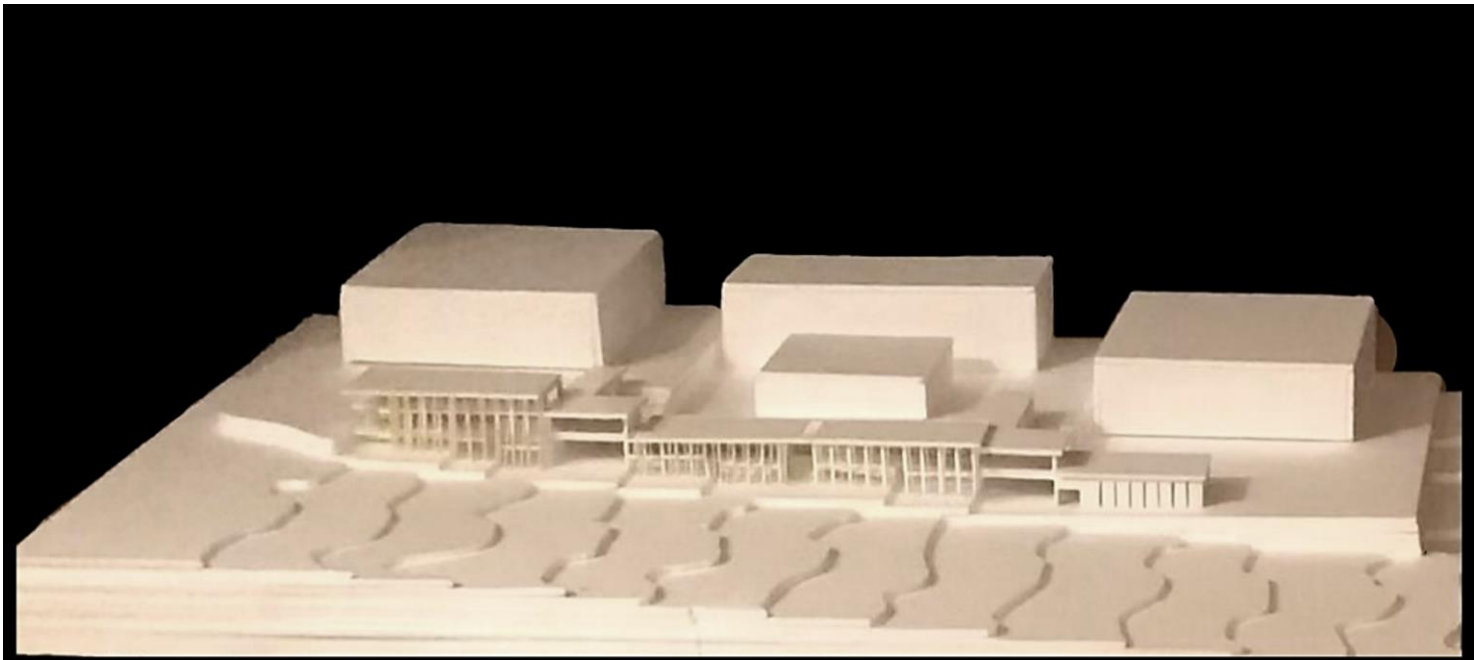
“Arquitetura não é para ser vista, é para ser vivida”

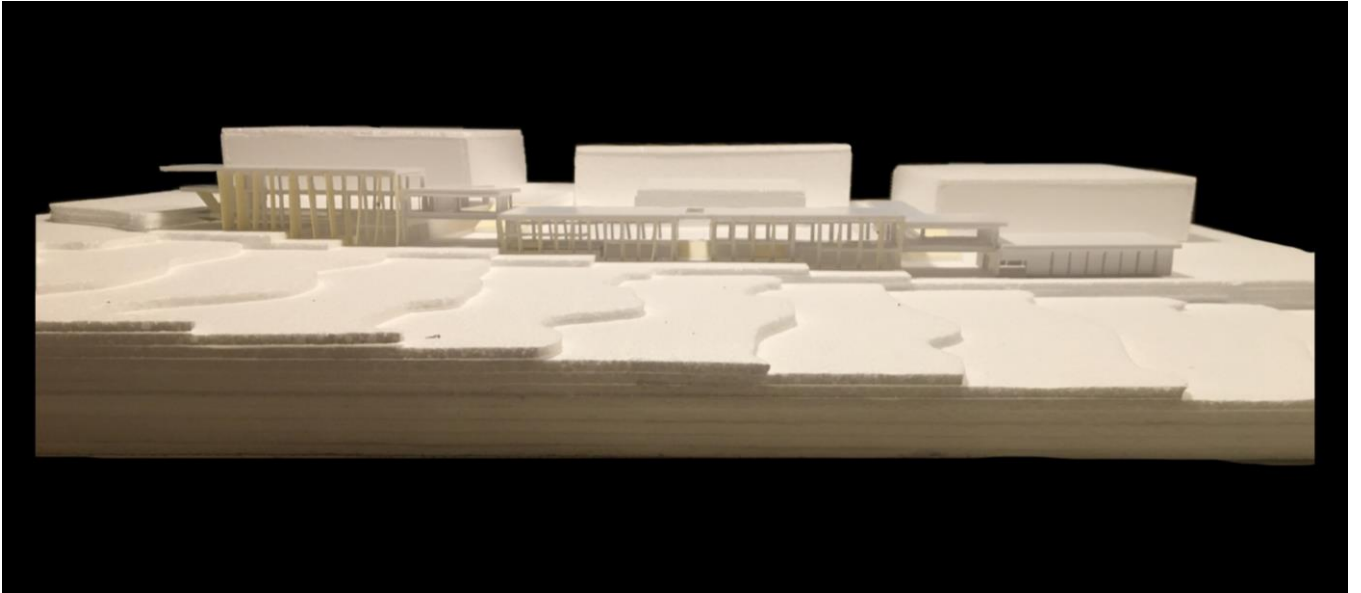
Paulo Mendes da Rocha, “II Conferência Nacional de Arquitetura e Urbanismo”, 2017

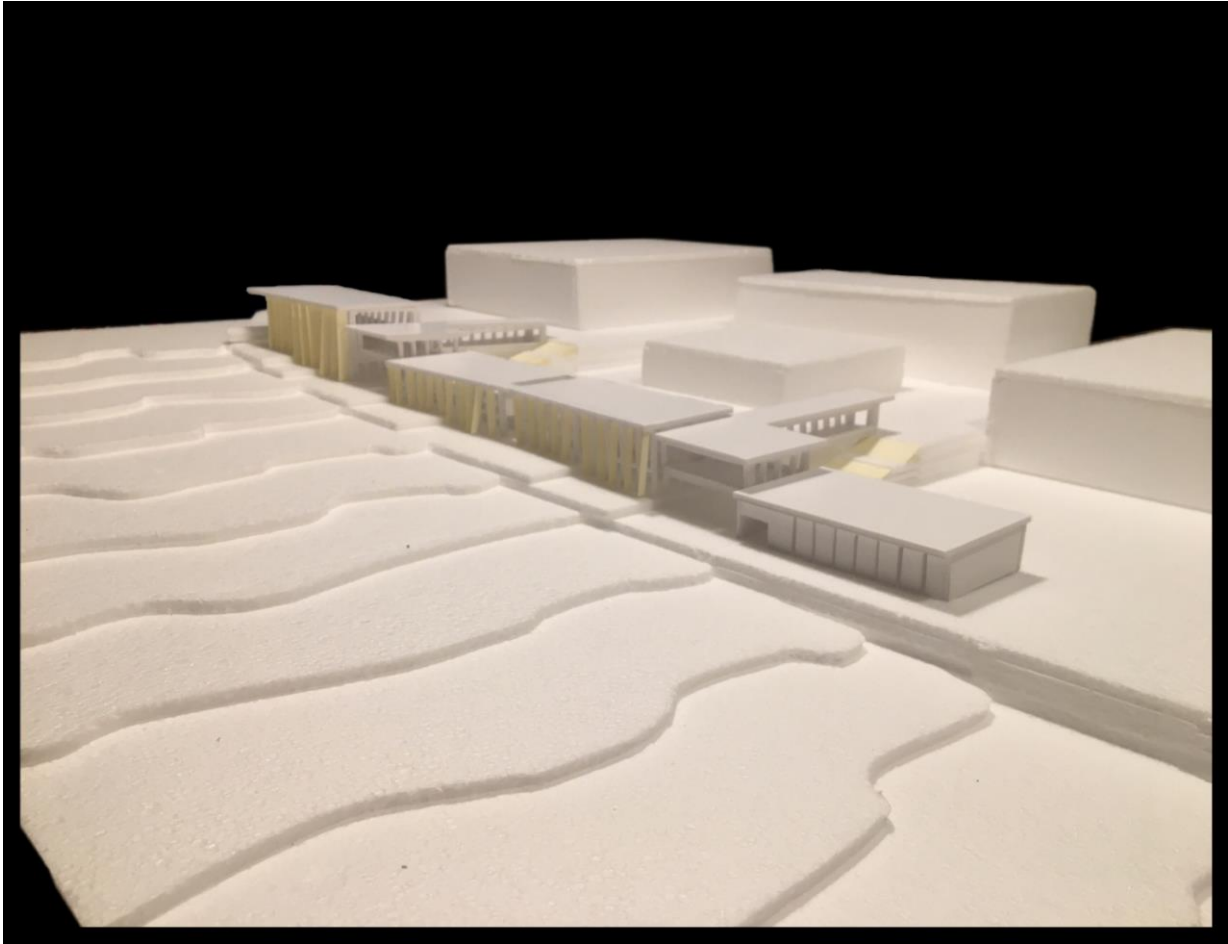


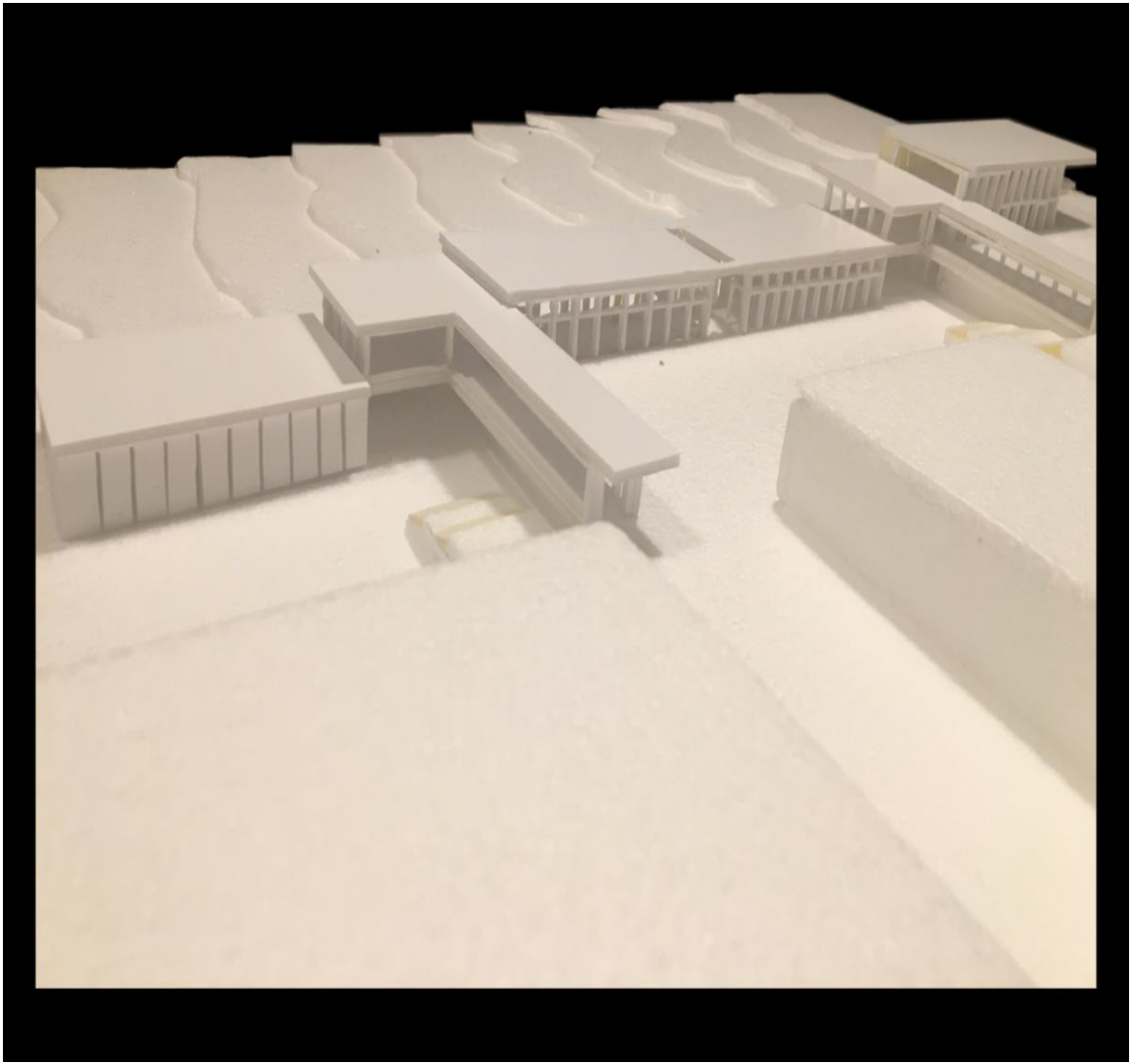
esquiço síntese

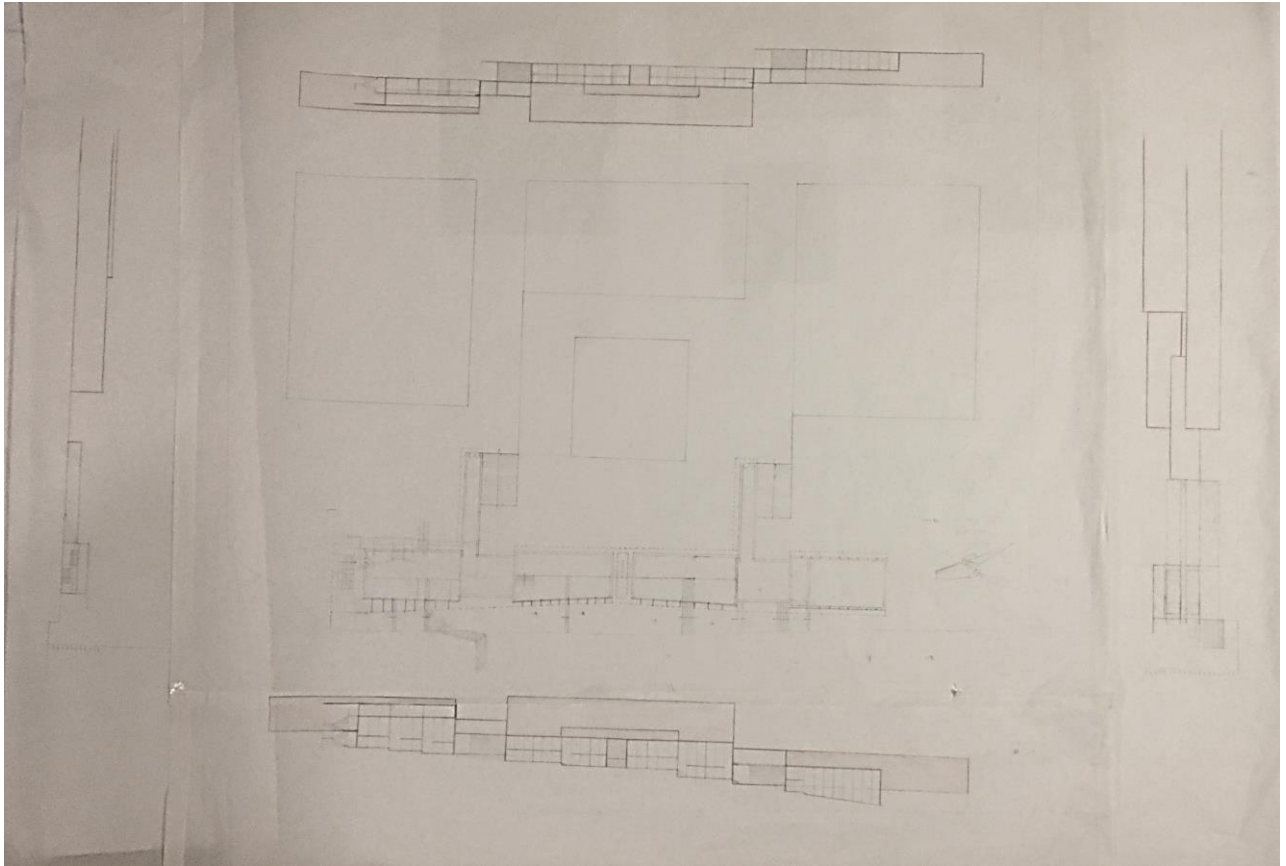




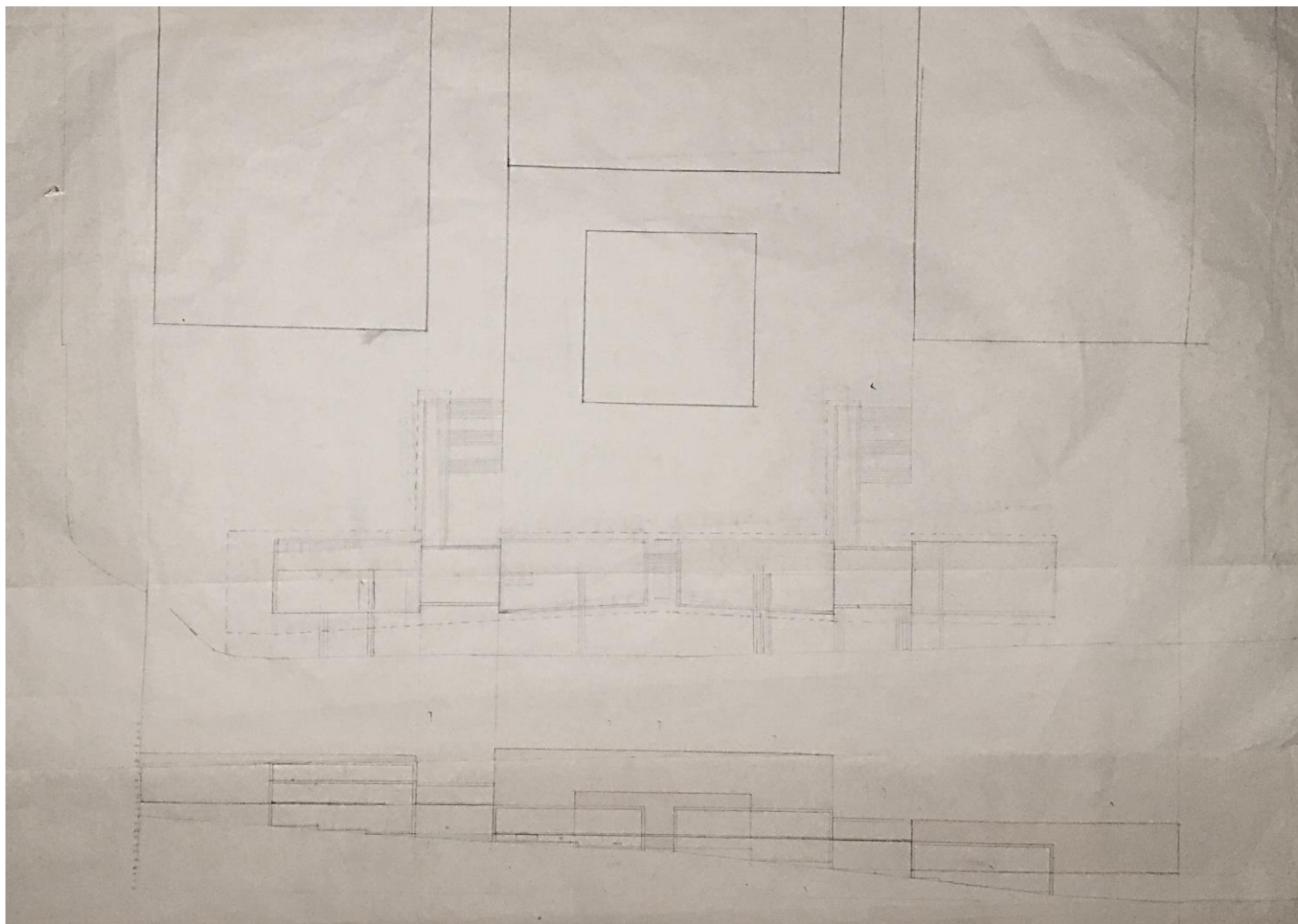




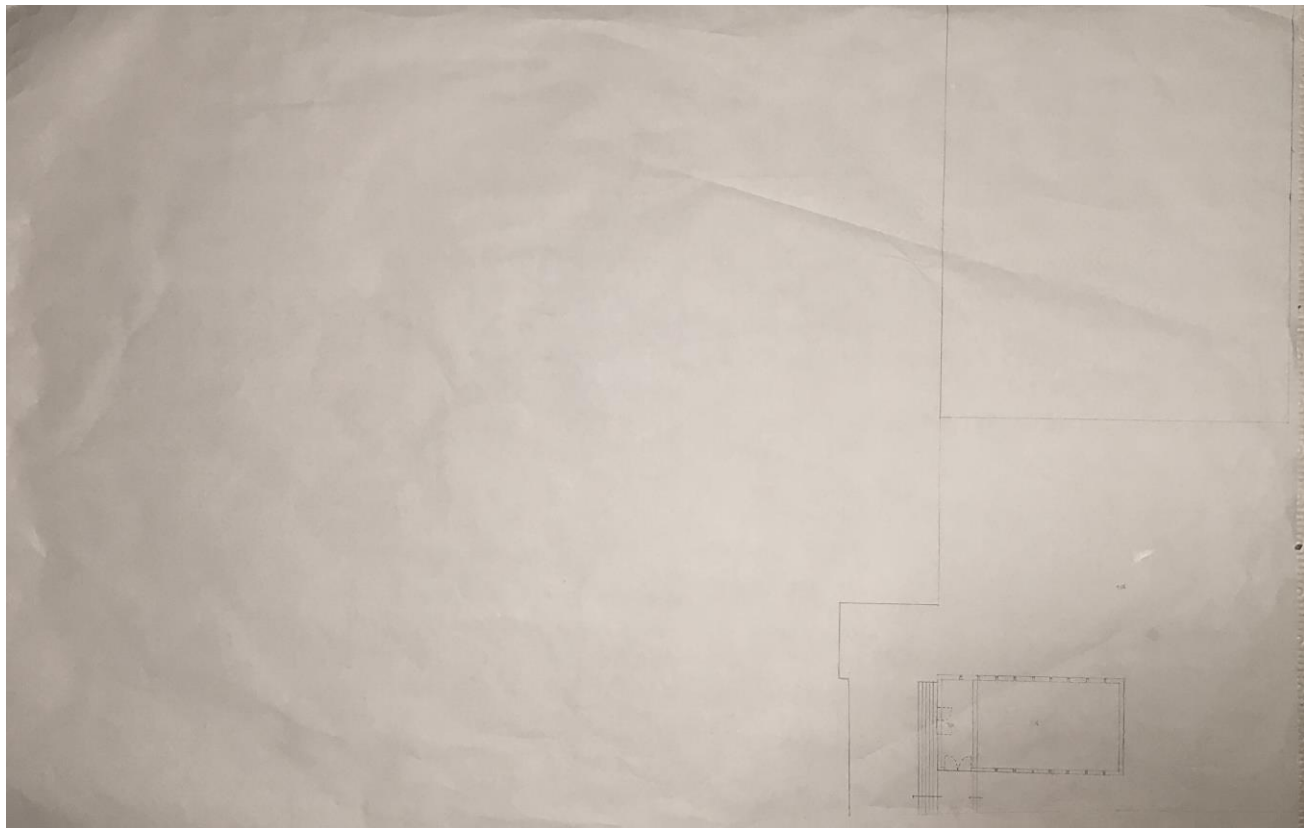




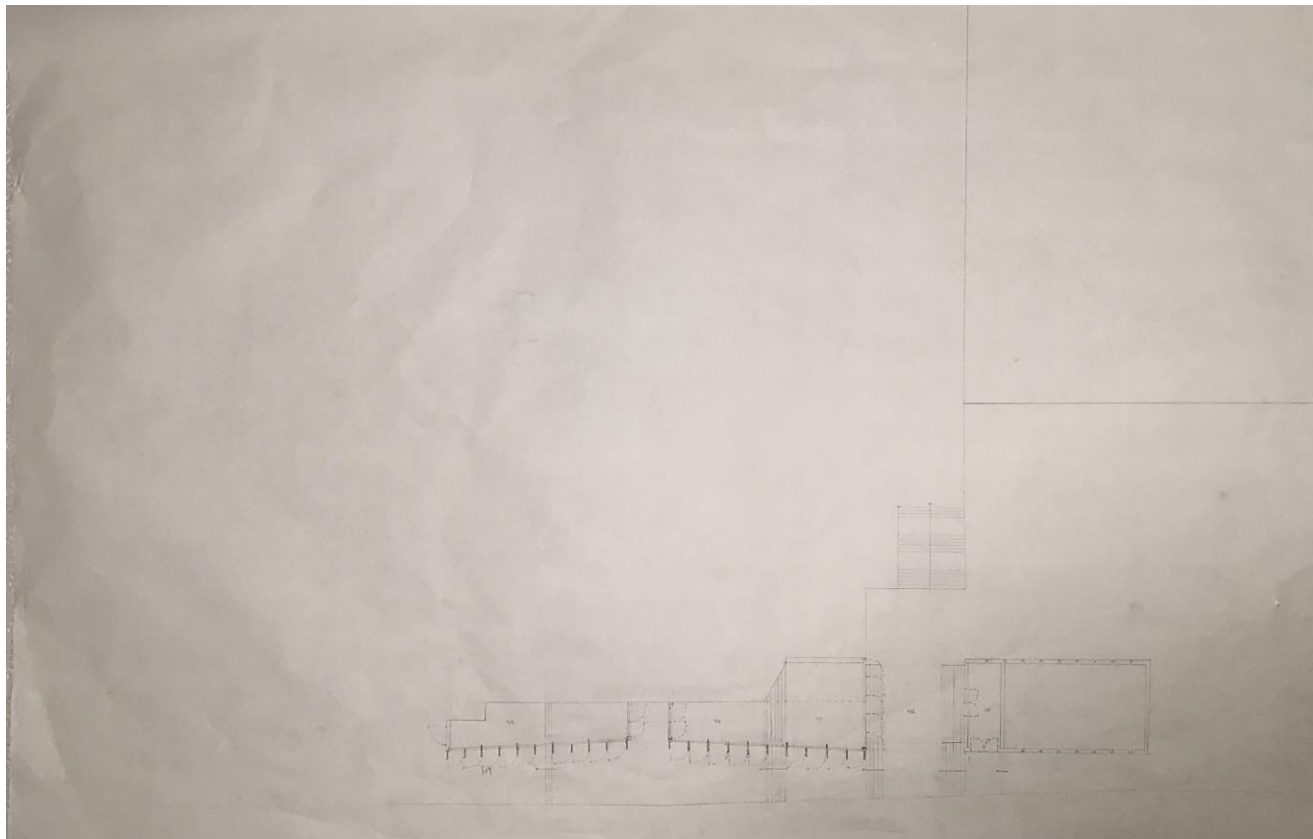
planta e perfil de conjunto



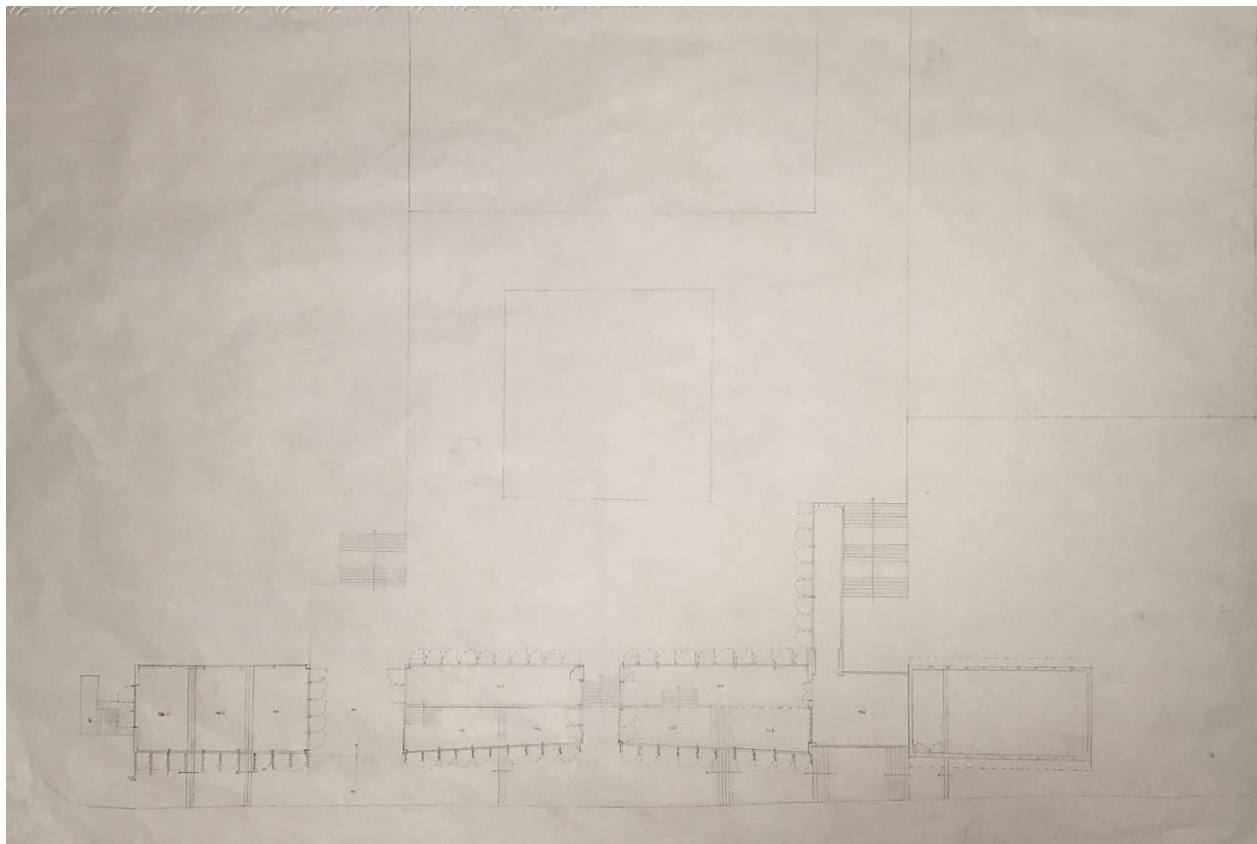
Planta de curvas de nível 102 a 106



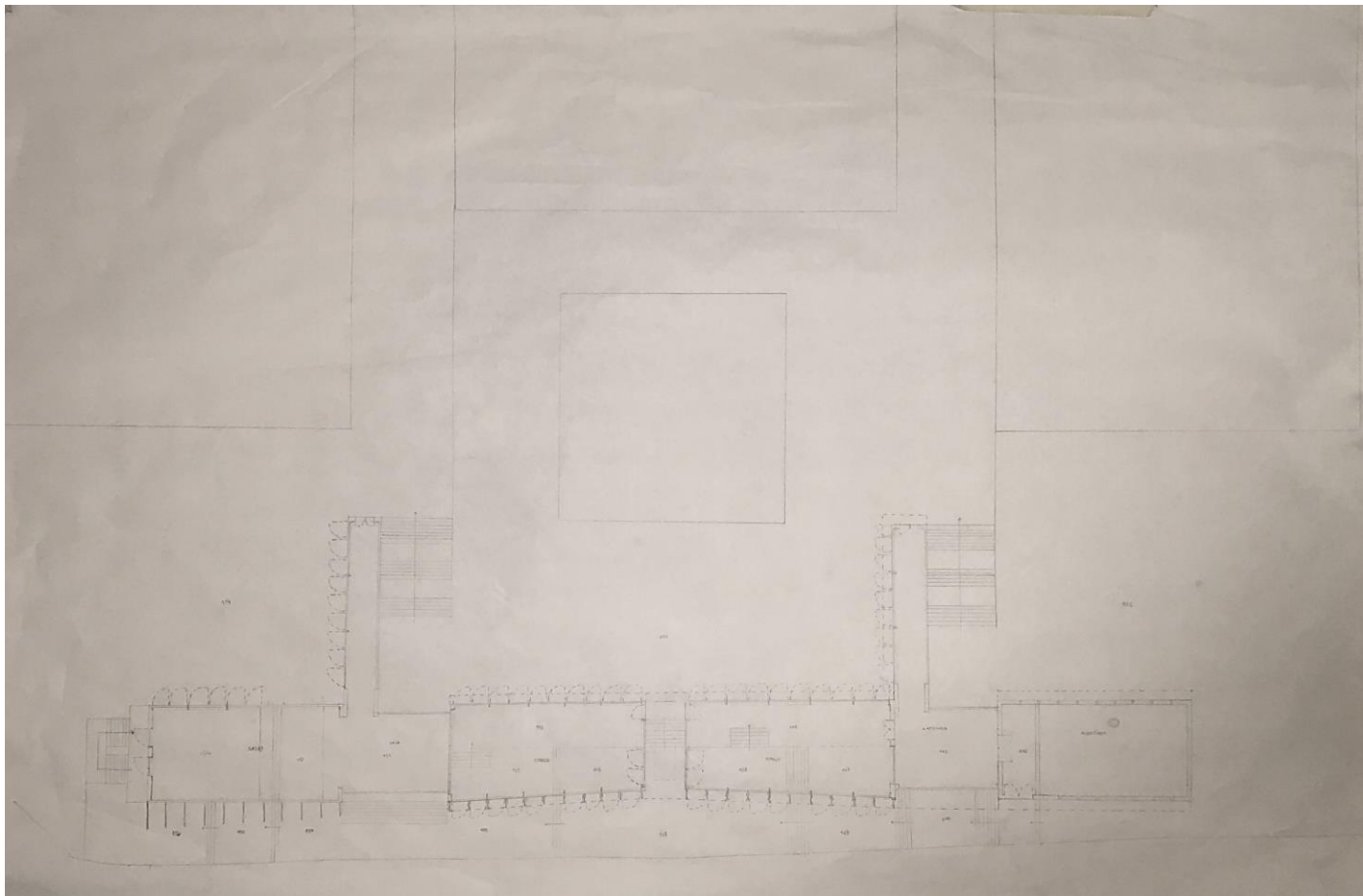
Planta de curvas de nível 102 a 109



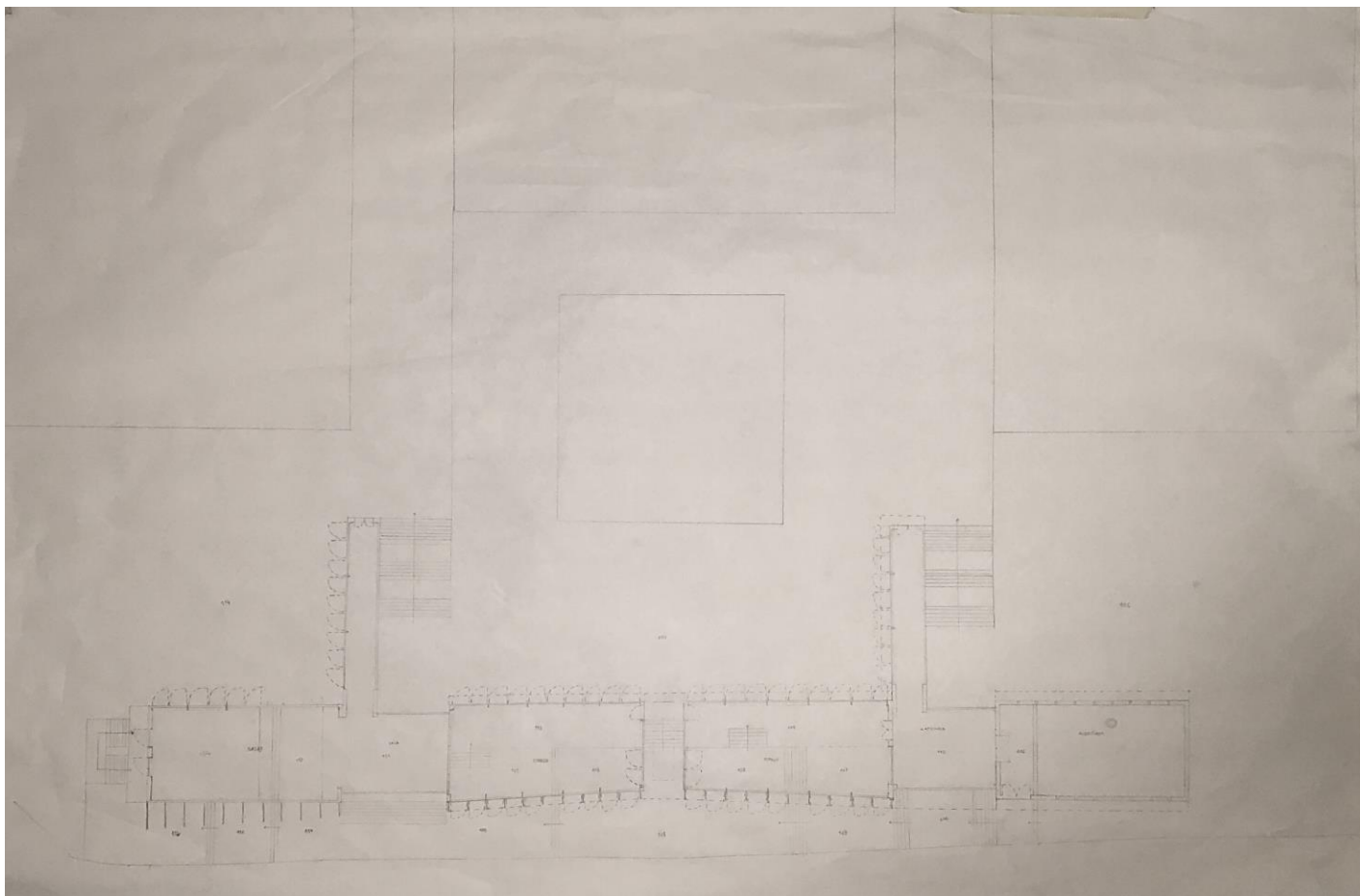
Planta de curvas de nível 102 a 112



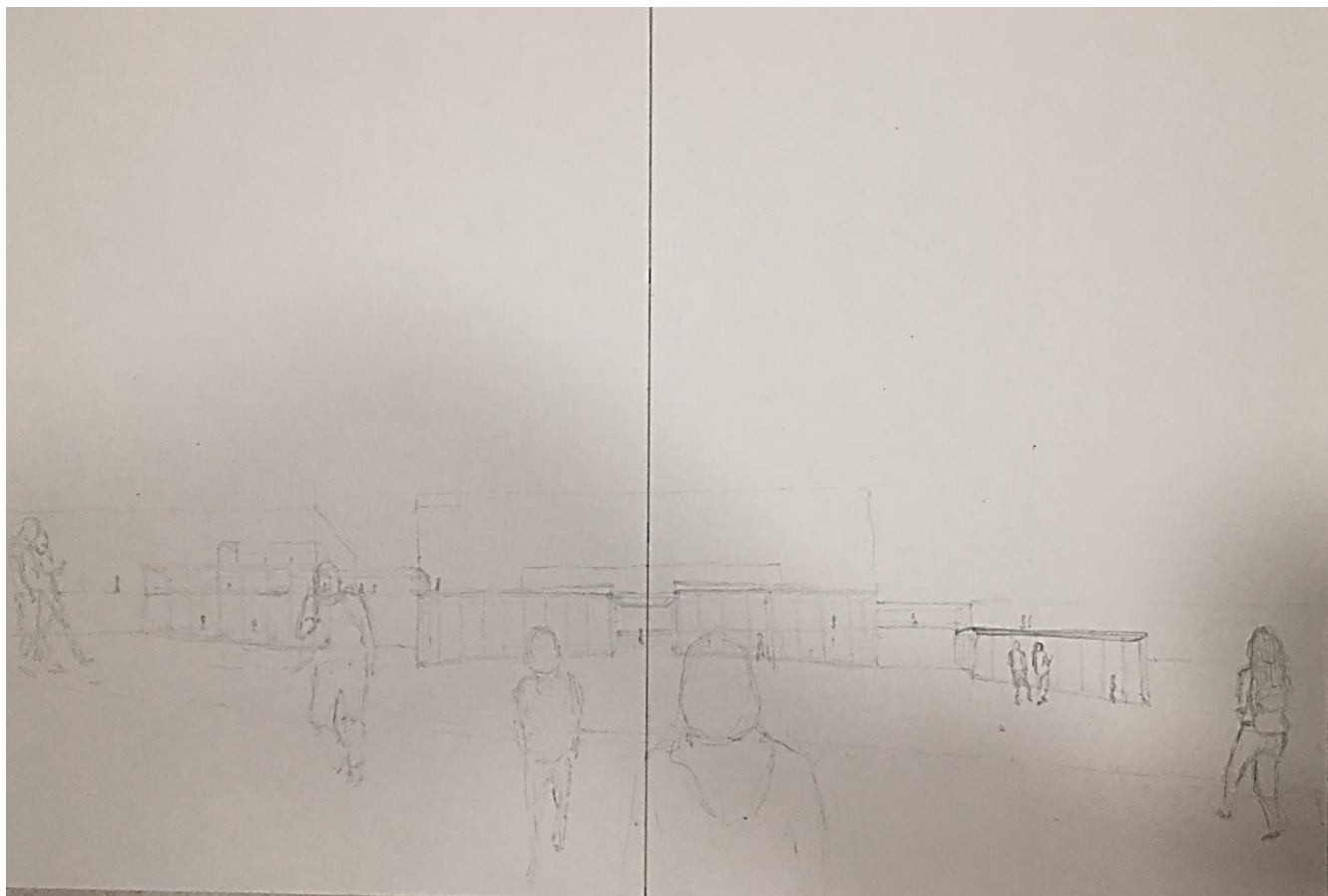
Planta de curvas de nível 102 a 114



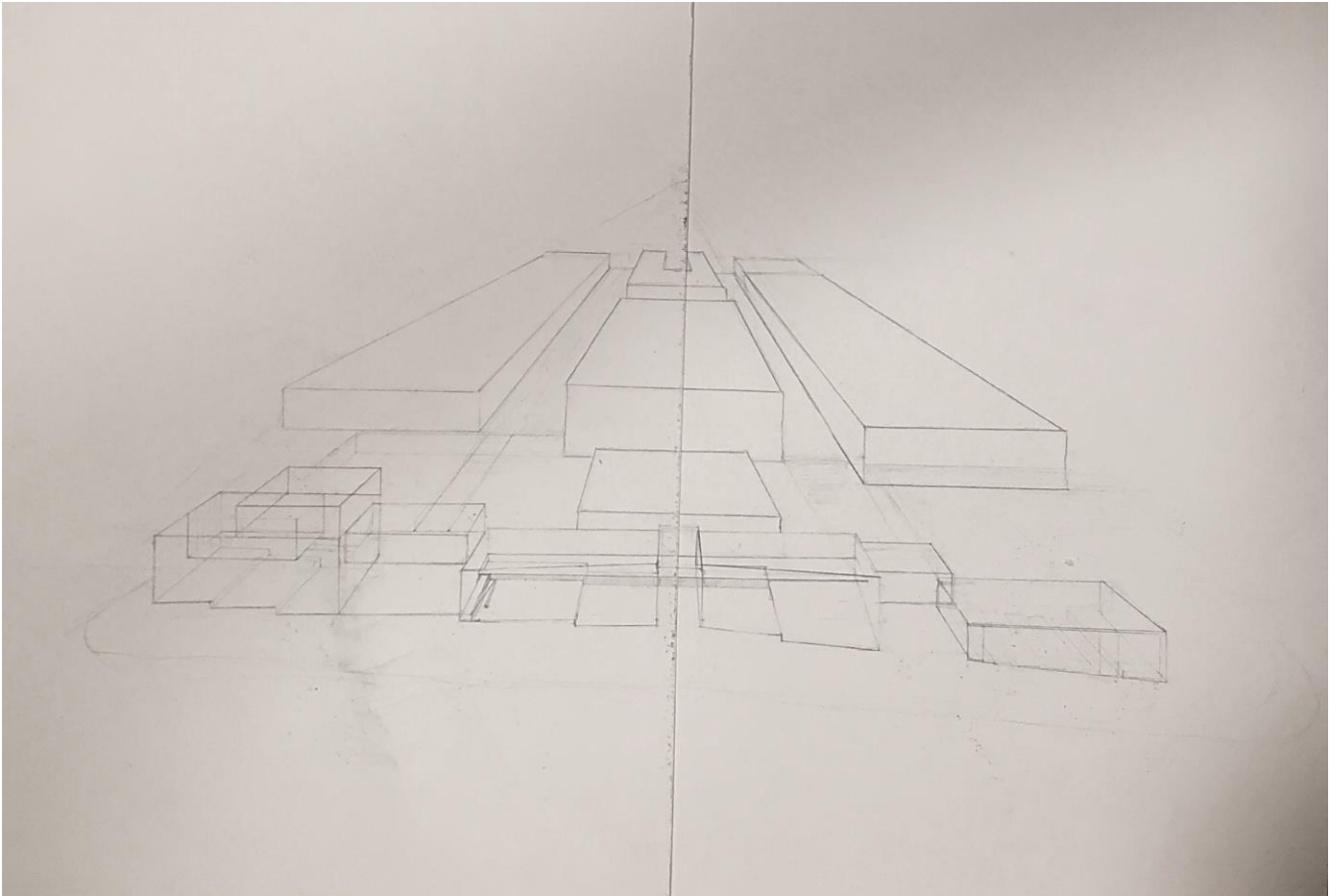
Planta de curvas de nível 102 a 120



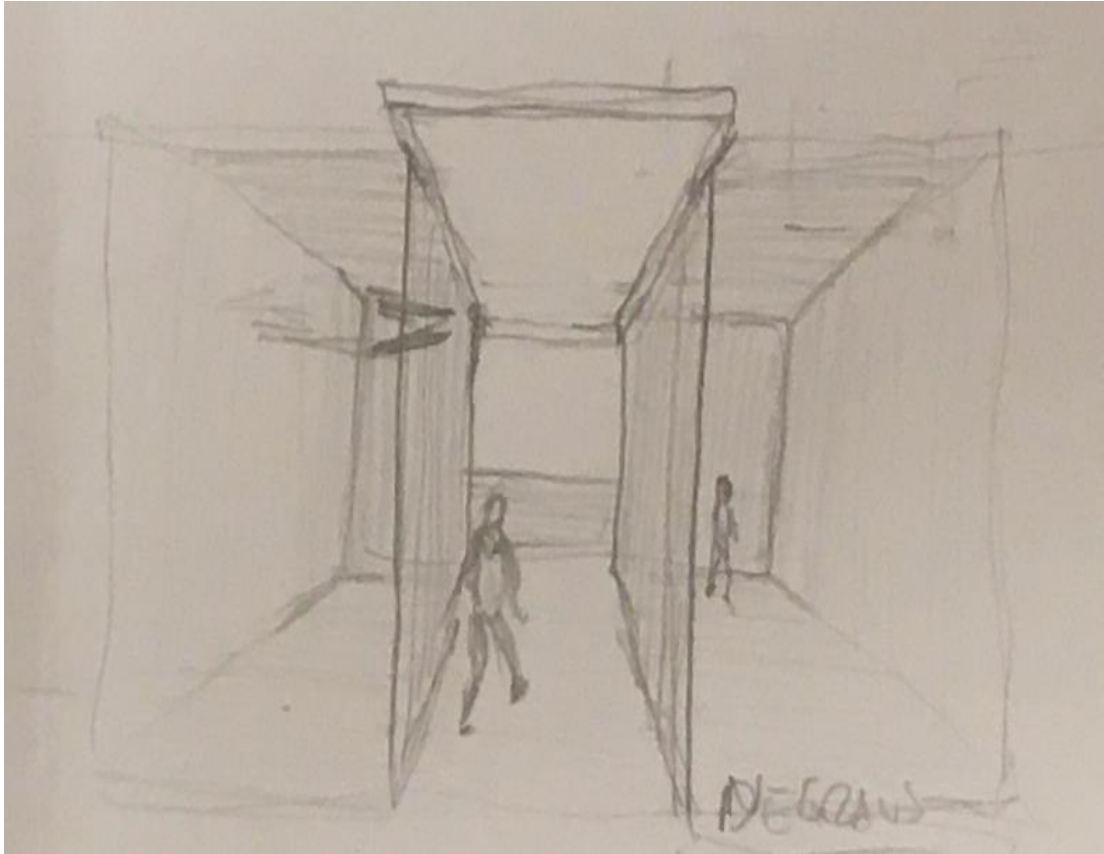
desenho(s) complementares



visão serial

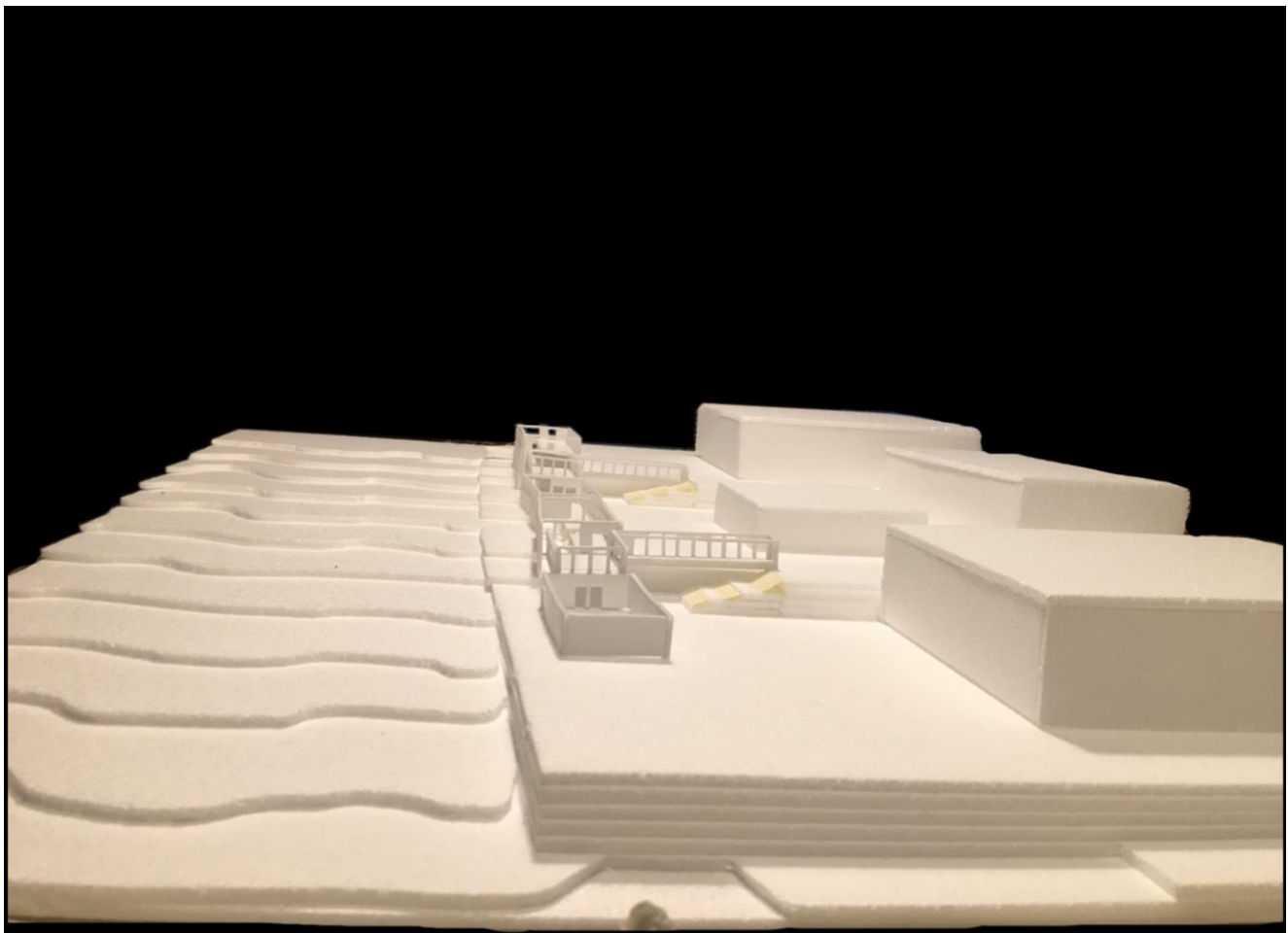


visão serial

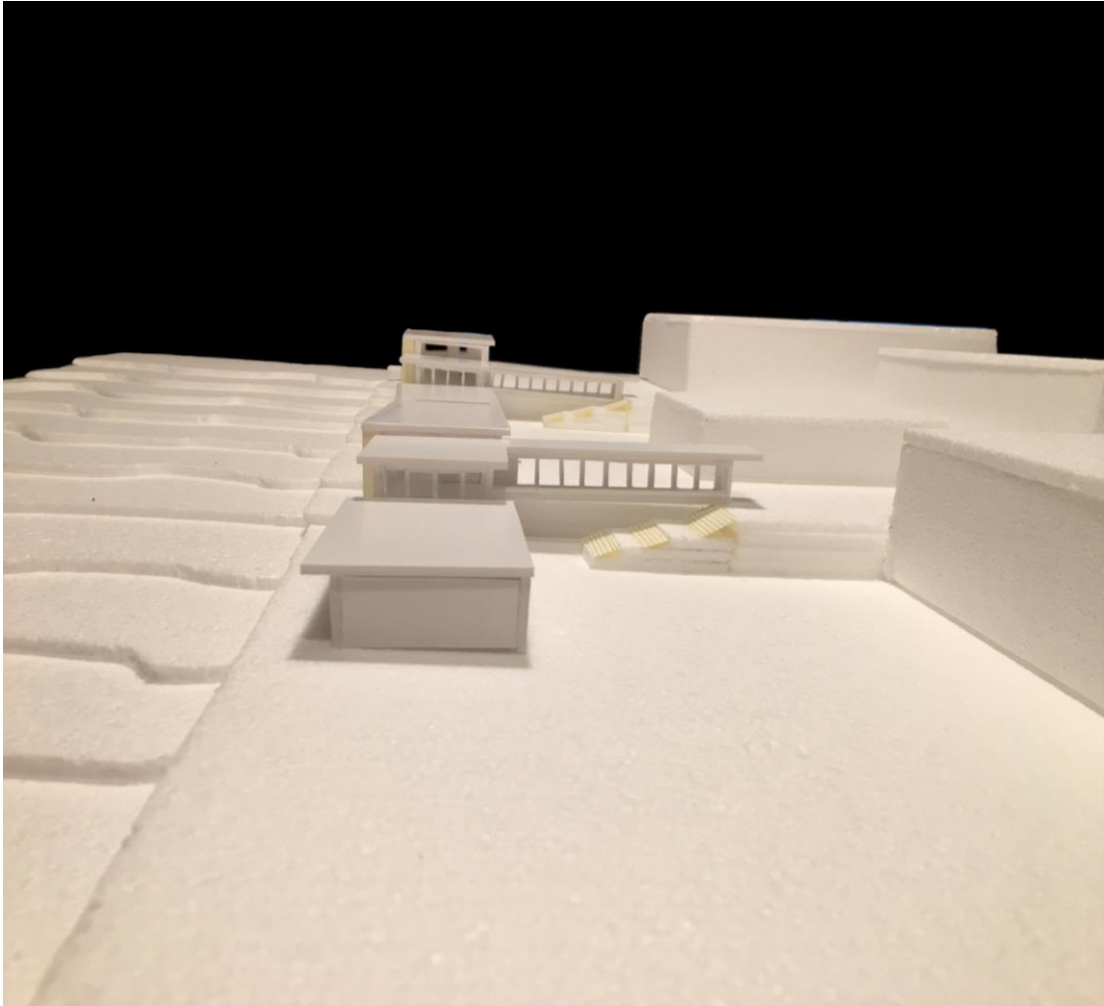




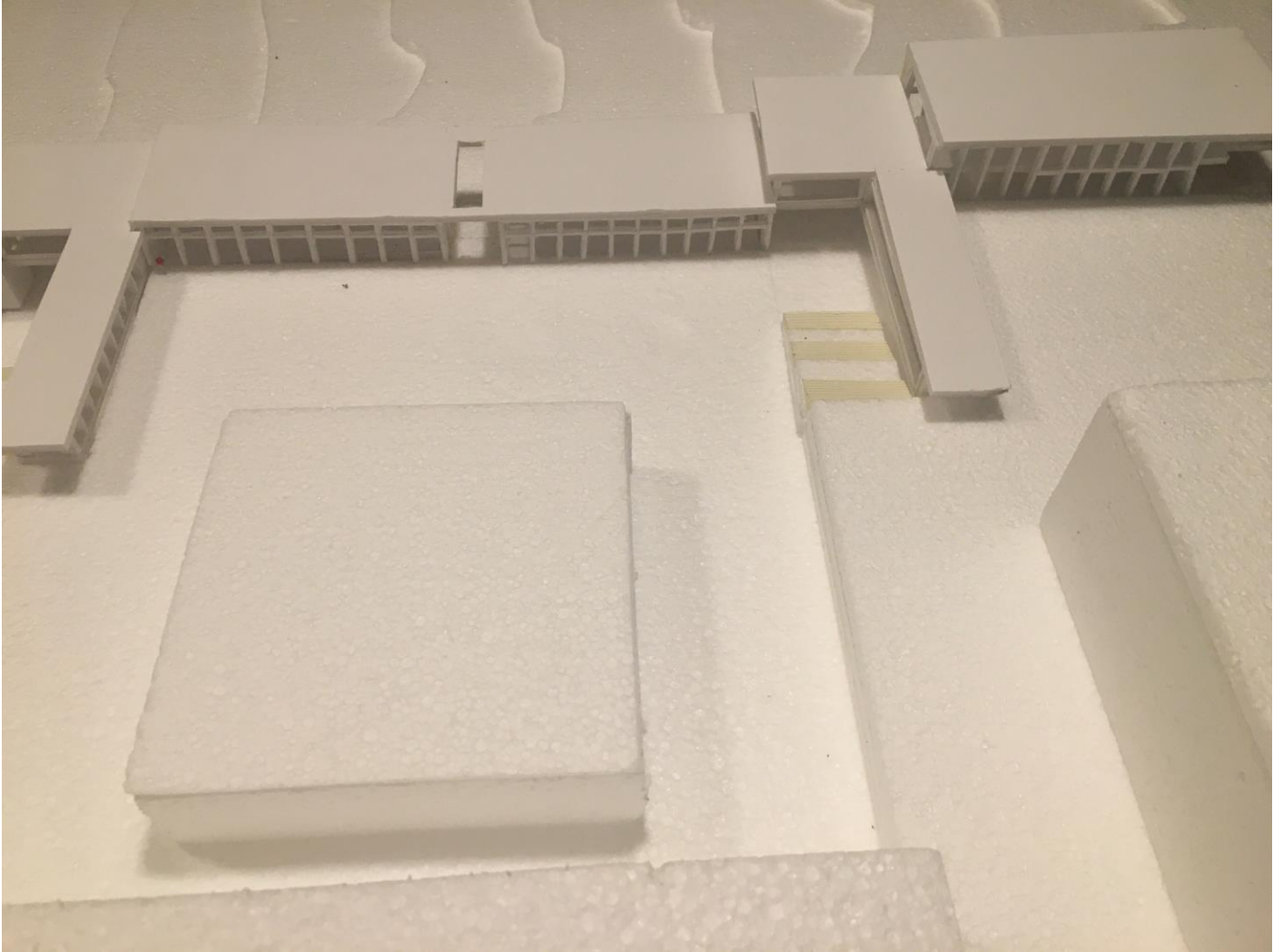
fotografias das maquetes de trabalho



fotografias das maquetes de trabalho

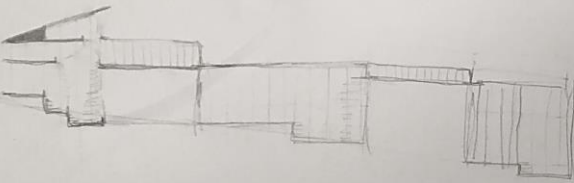
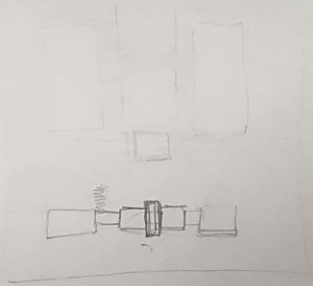
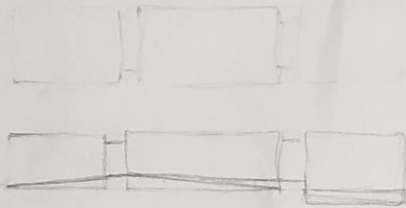


fotografias das maquetes de trabalho



fotografias das maquetes de trabalho

Processo



N°	o	C	l.m
12	16,04	30	5,10

$$723 \cdot 14 = 10162 \text{ DEGRÉS}$$

$$723 \cdot \frac{17}{100} = 1229,1$$

$$h = 233$$

$$233 \cdot 7,5 = 1747,5$$

$$723 \cdot 7,5 = 5422,5$$

$$723 \cdot 100 = 72300$$

$$723 \cdot 7,5 = 5422,5$$

$$C = 29,92 \cdot 30$$

$$30 \cdot 30 \cdot 17 = 1530 \text{ PERSO}$$

$$20 \cdot 20 = 400 \text{ cm}$$

$$\textcircled{E2T} \textcircled{1} 427 \cdot K = 7662 \text{ DEGRÉS}$$

$$15 = 28,66$$

$$\textcircled{2} \text{ cadf } 2 \times 17,67$$

$$= 35,34 \text{ cm}$$

$$24 \times 21,5 = 516 \text{ m}$$

plombé de 40° en 20° = horizontal

$$\textcircled{2} 427 \cdot \frac{77}{28} \text{ DEGRÉS} = 15,8$$

$$= 1,5 \cdot 25$$

Calculer FOUND

n°	e	c
20	17,5	28 x

$$h = 427$$

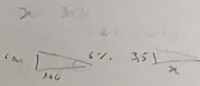
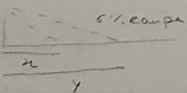
$$\textcircled{3} \textcircled{1} 427 \cdot 17 \text{ cm} = 7259 \text{ DEGRÉS}$$

$$13 \text{ cm} = 237$$

$$\textcircled{2} 427 \cdot 25 = 10675 \text{ cm}$$

$$24 \text{ cm} = 17,39 \text{ cm}$$

ESCADES
h = 350

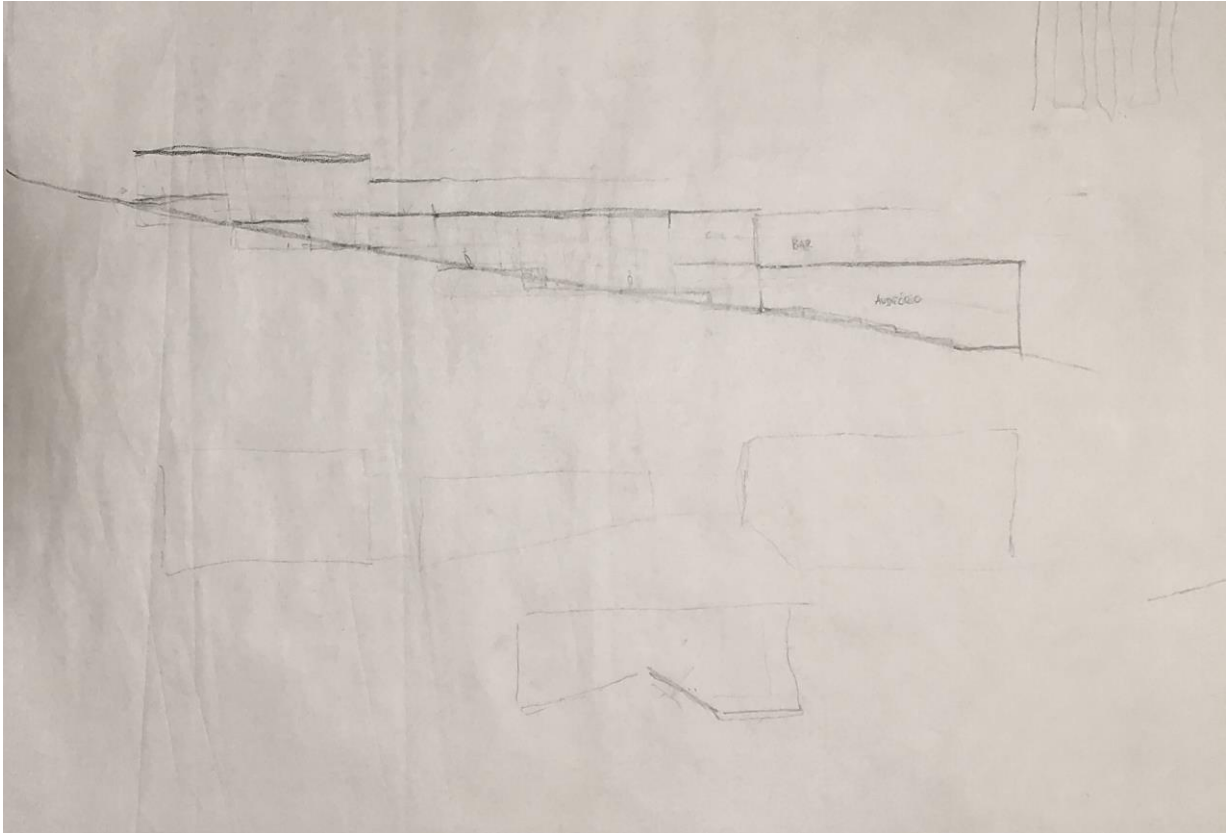


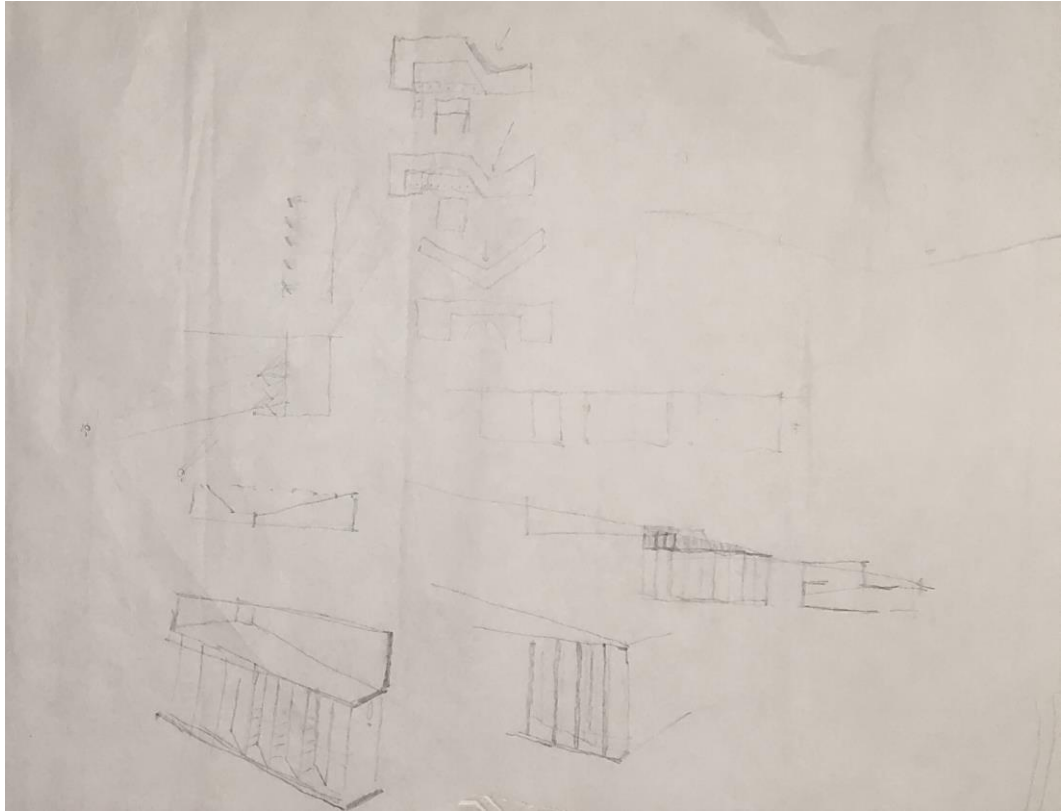
Calculer rampa

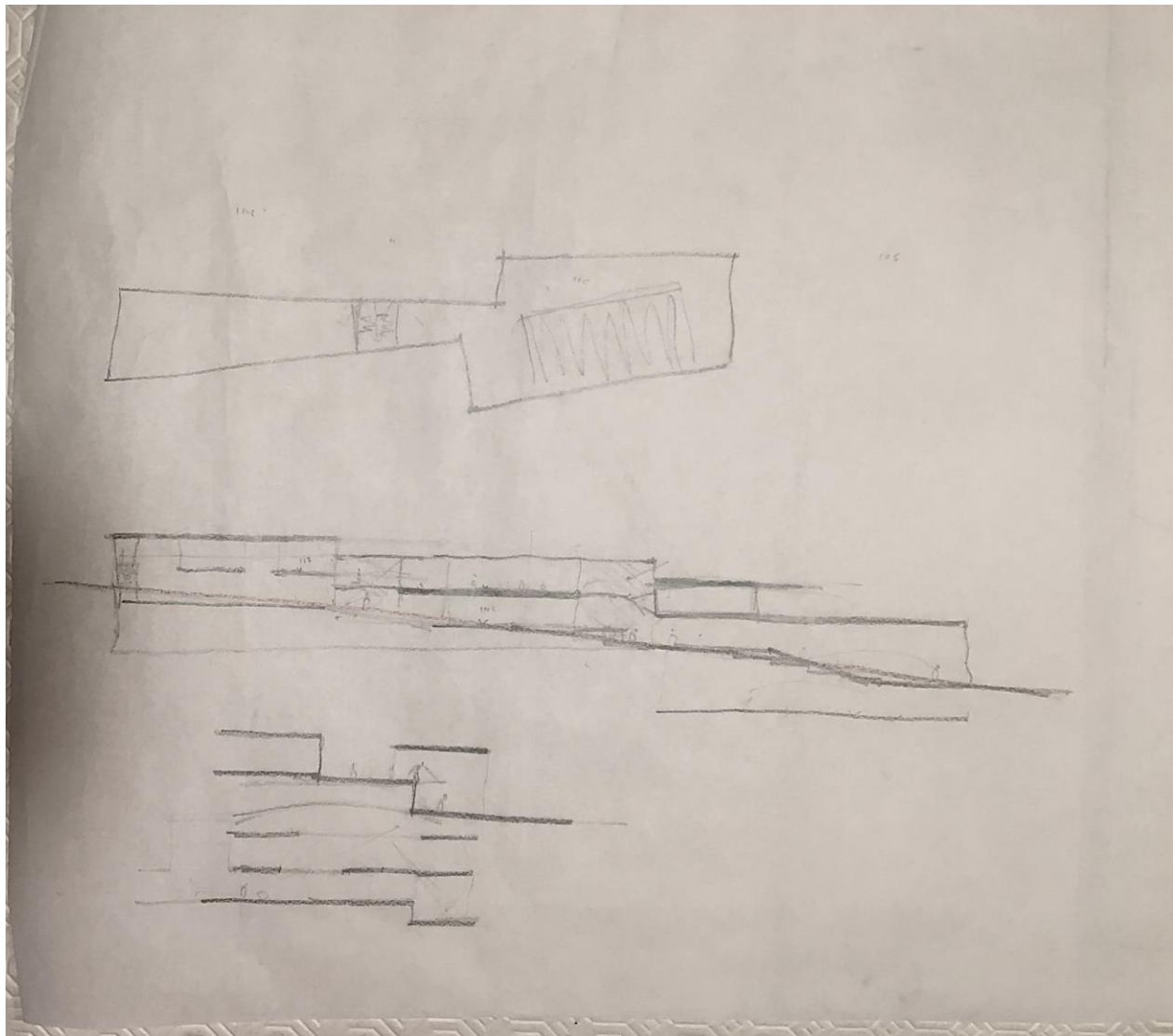
$$6 - 100$$

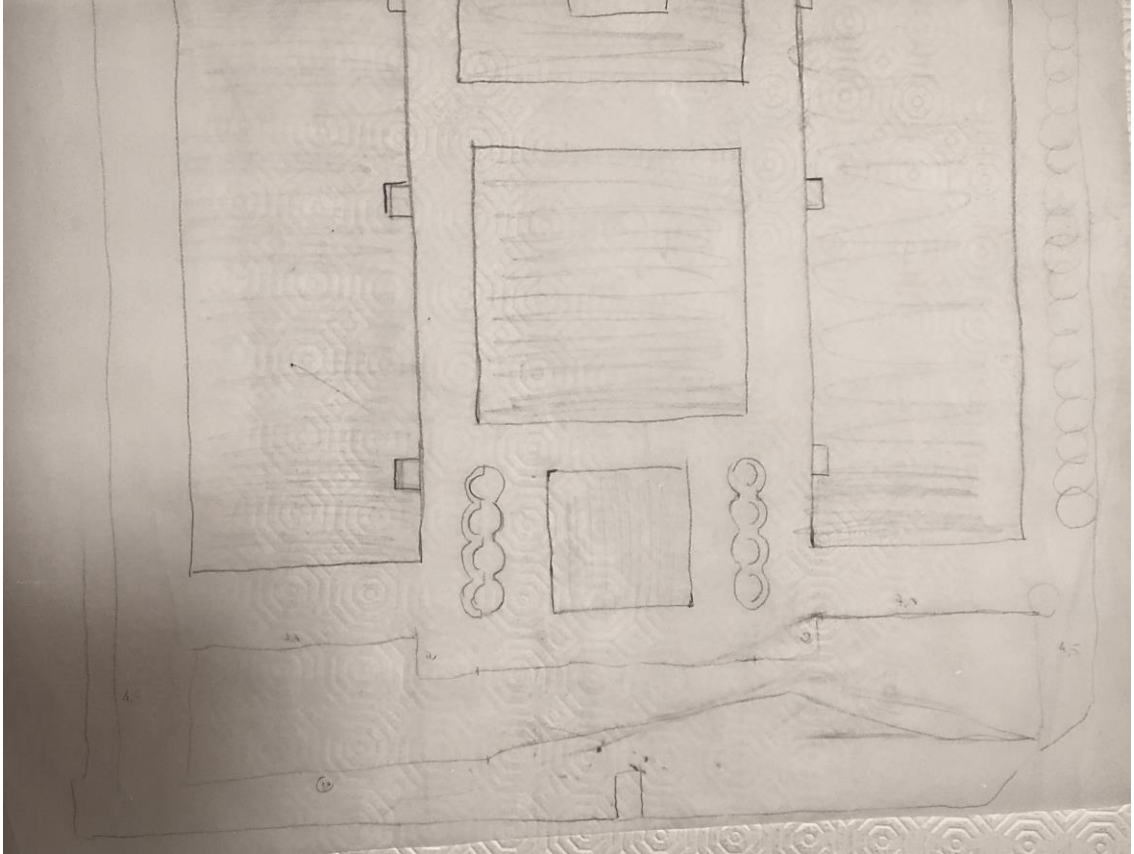
$$35 - x$$

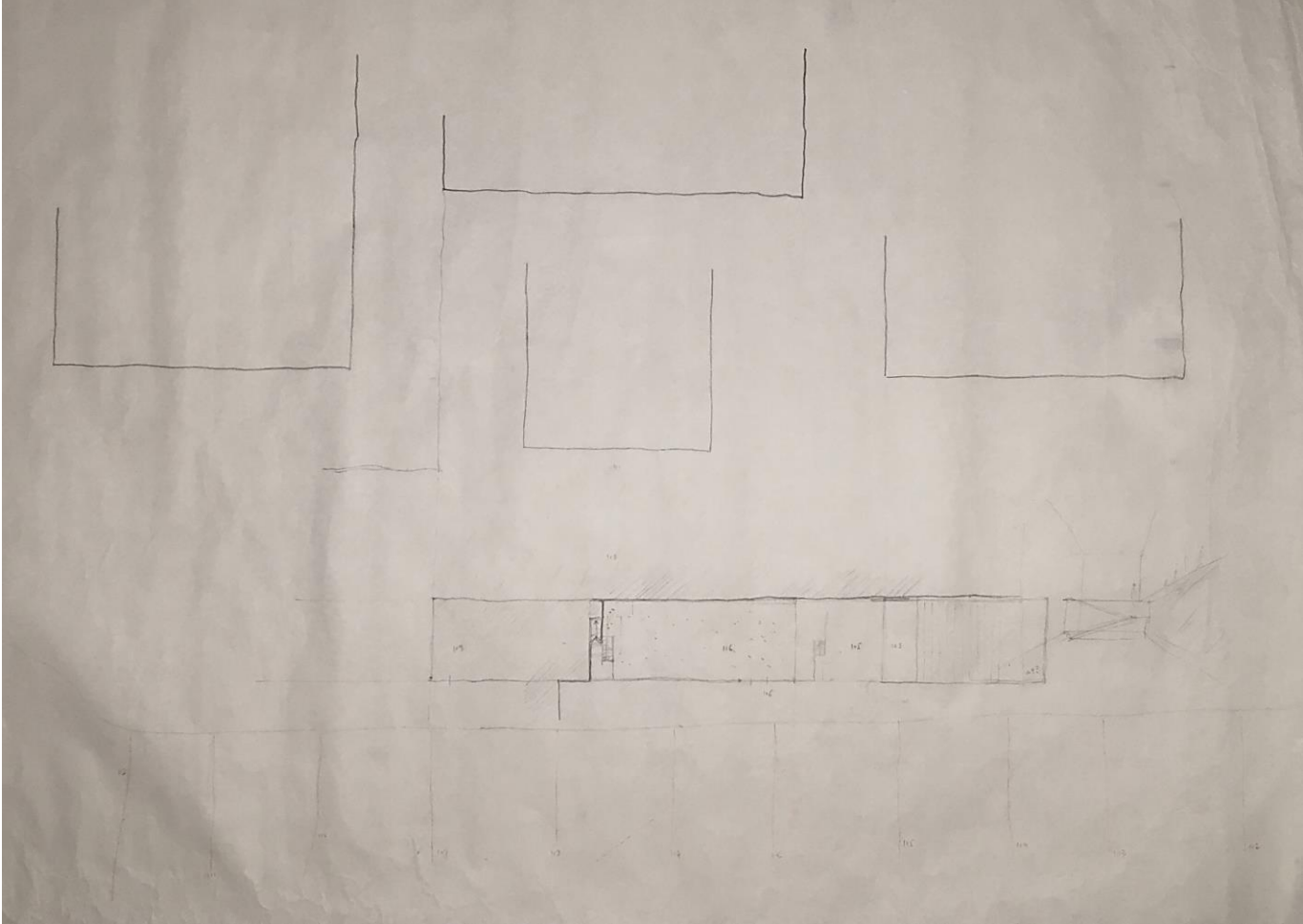
$$x = \frac{3,5 \cdot 100}{6} = 58 \text{ cm}$$

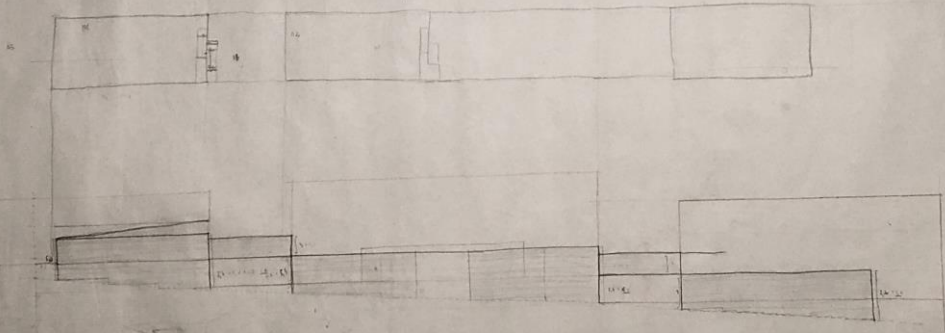
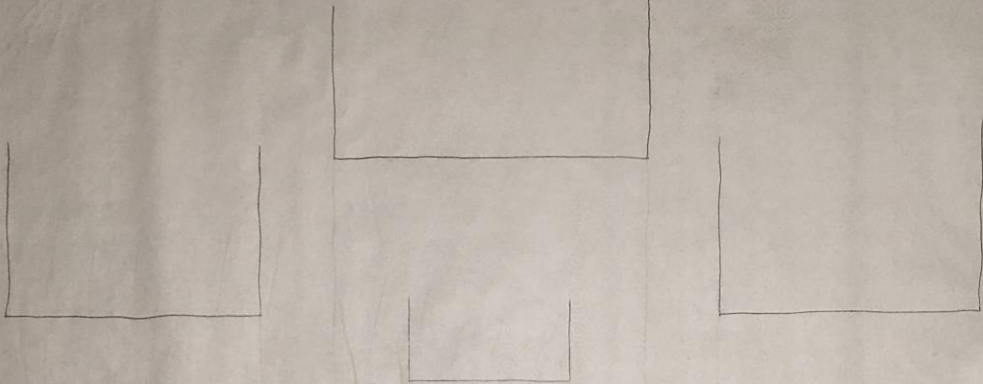












PLAN
SECTION

Scale
1:100
1:200
1:500

1ª fase

lado nascente

Proposta



Museu de Arte de Chichu (Naoshima, Japão), Tadao Ando



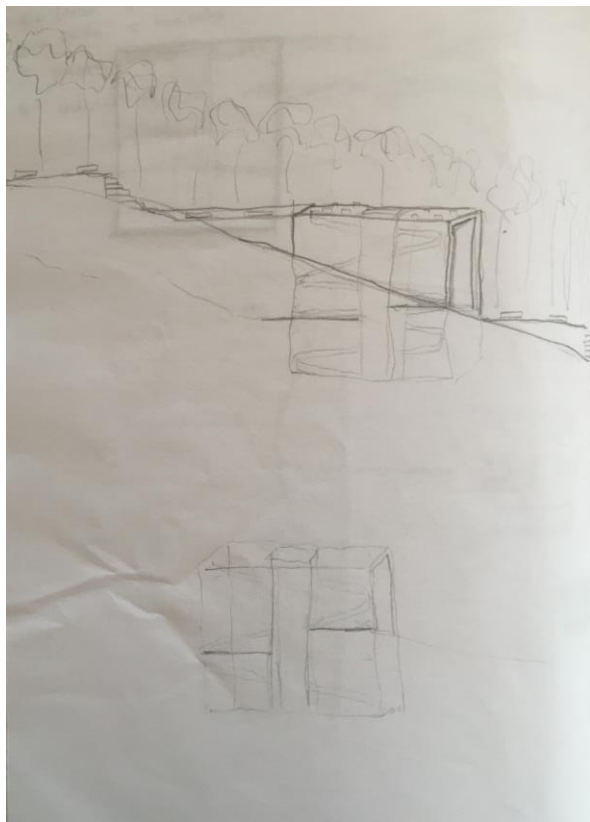
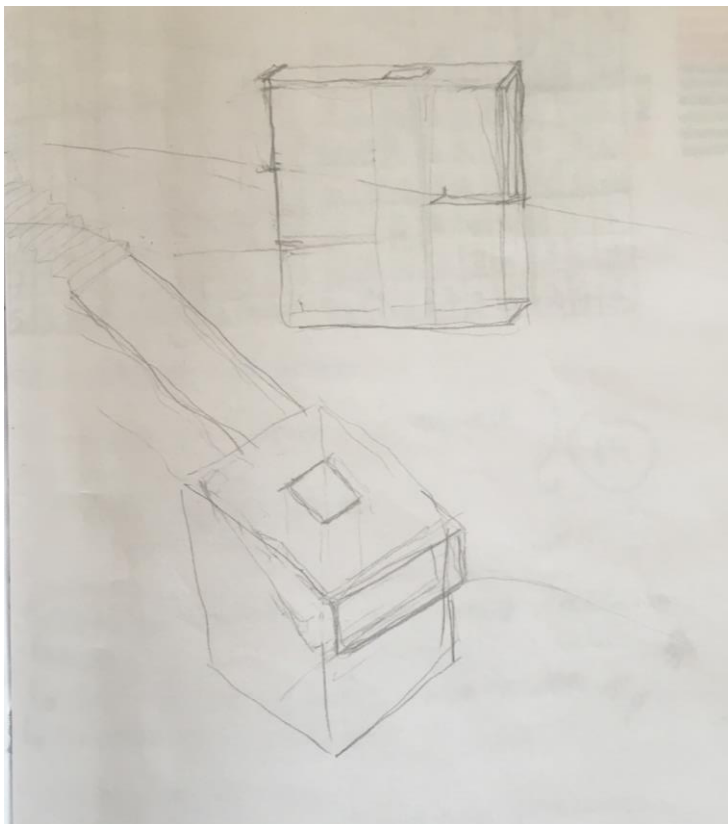


Jardins de Awaji Hyakudanen (Japão), Tadao Ando

“ We borrow from nature the space upon which we build...”

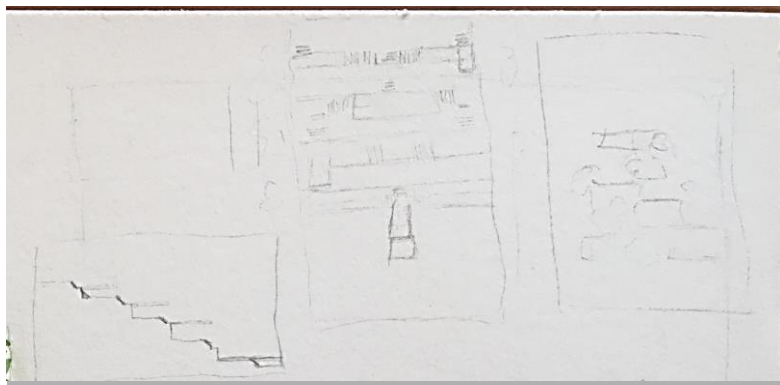
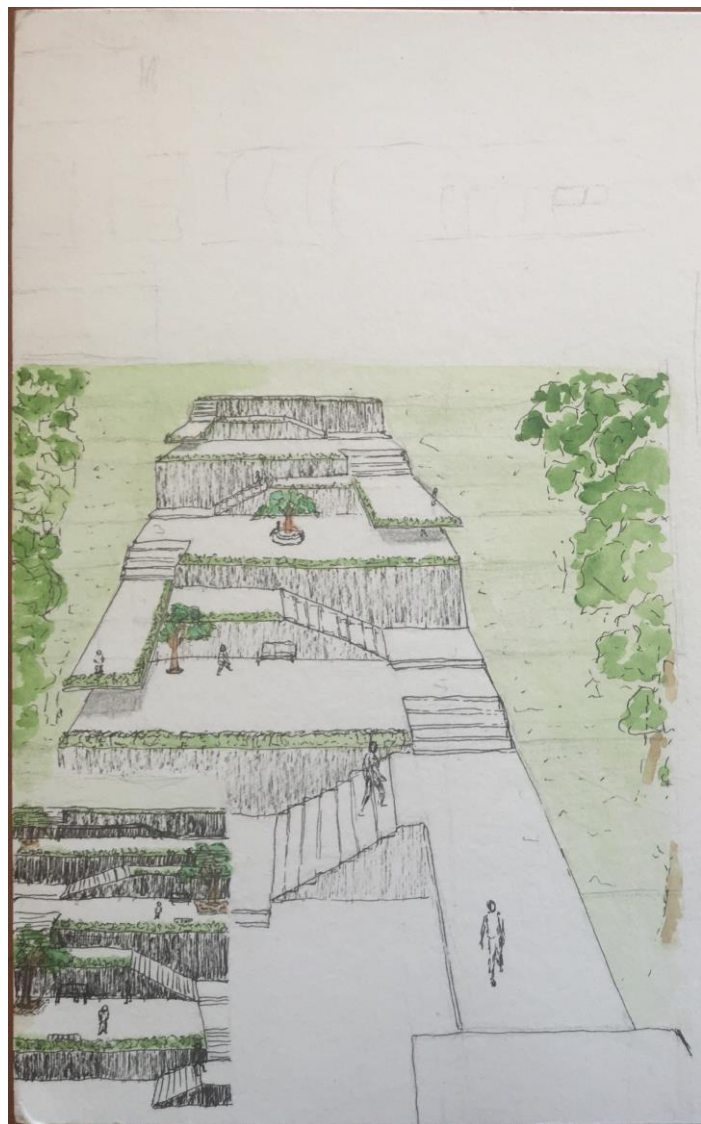
Tadao Ando





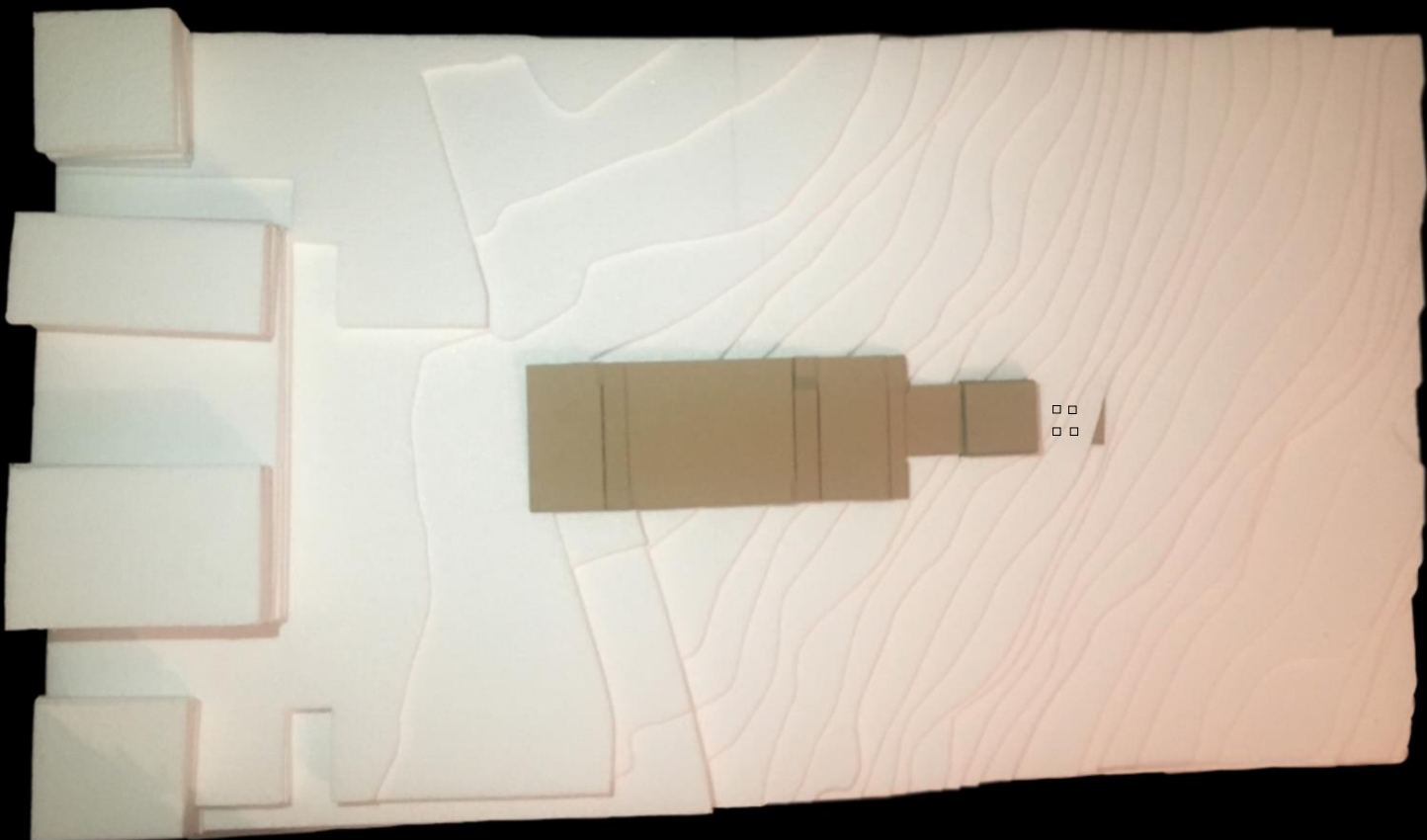
esquiço síntese

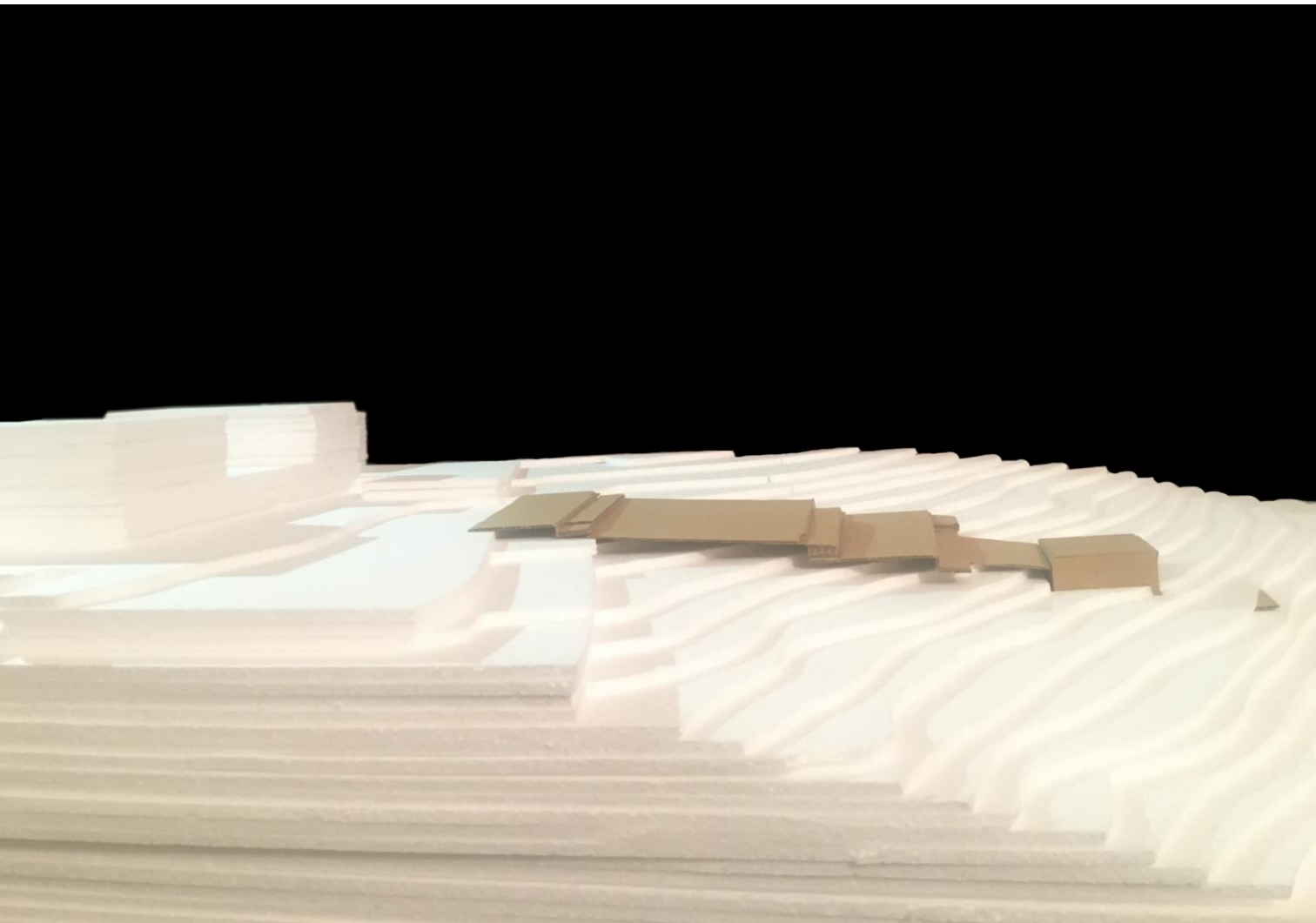


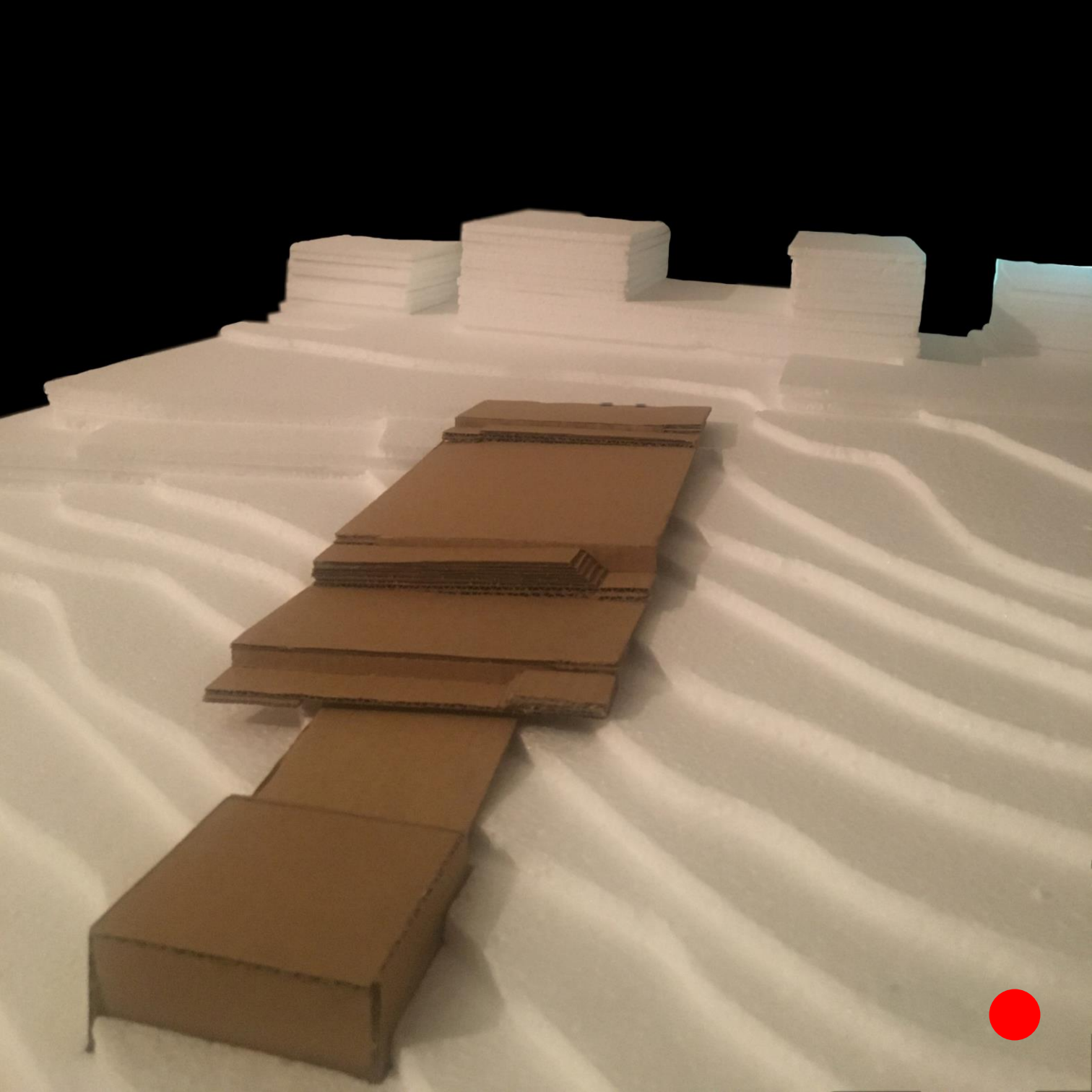


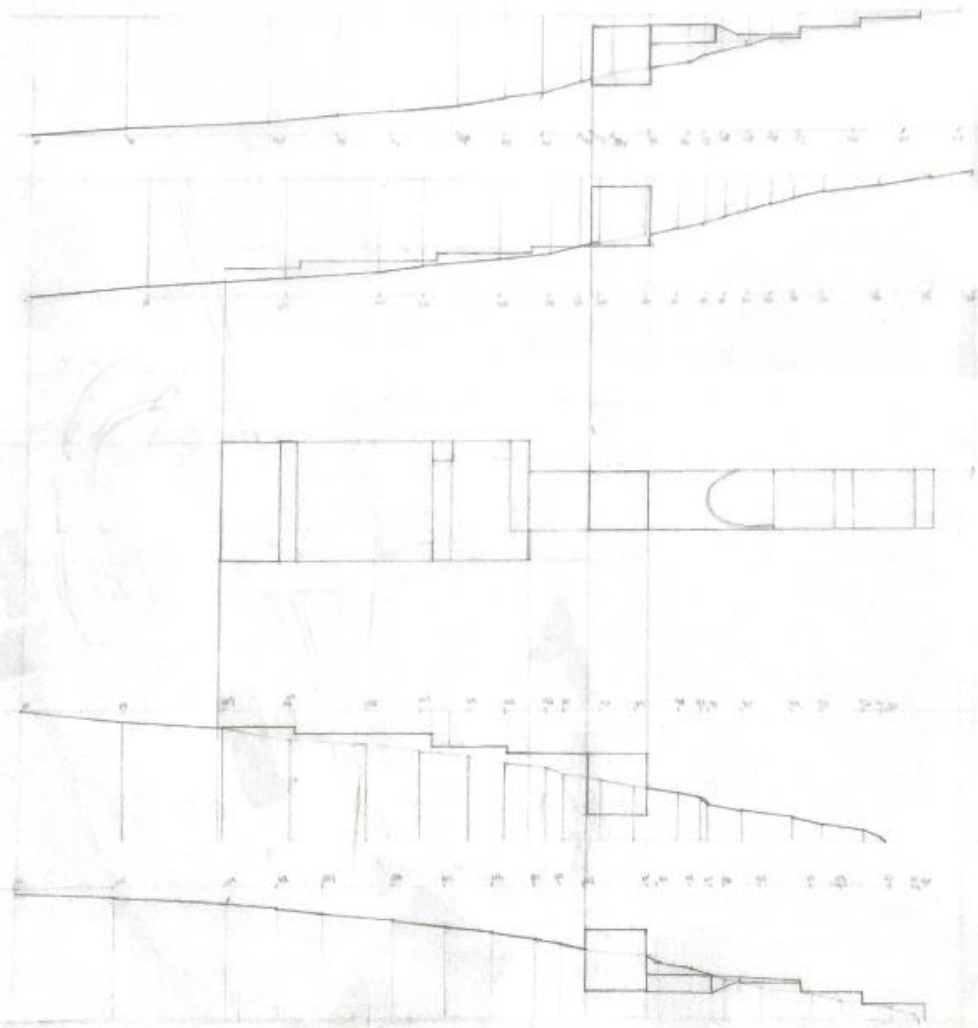
esquiço síntese





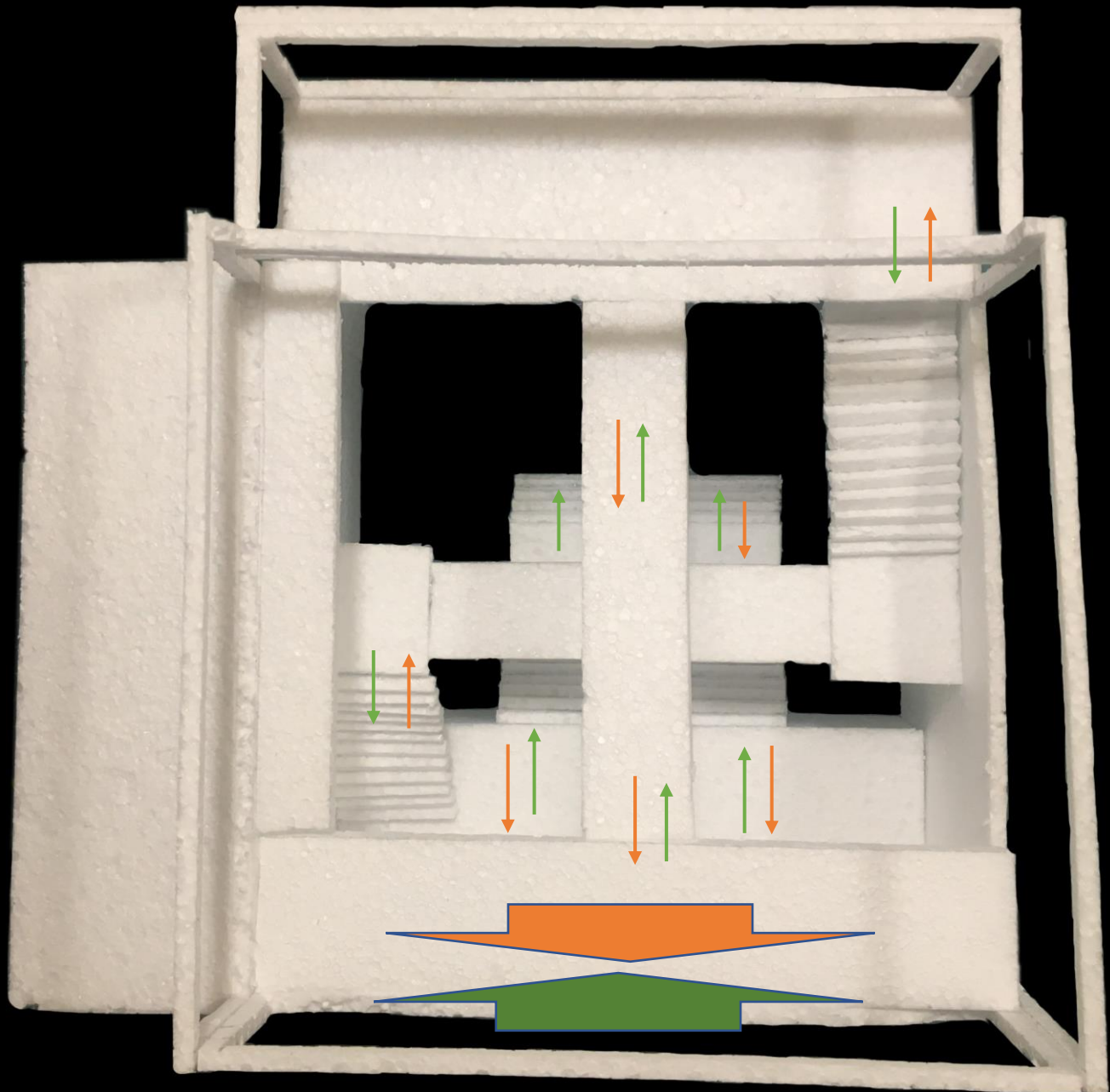


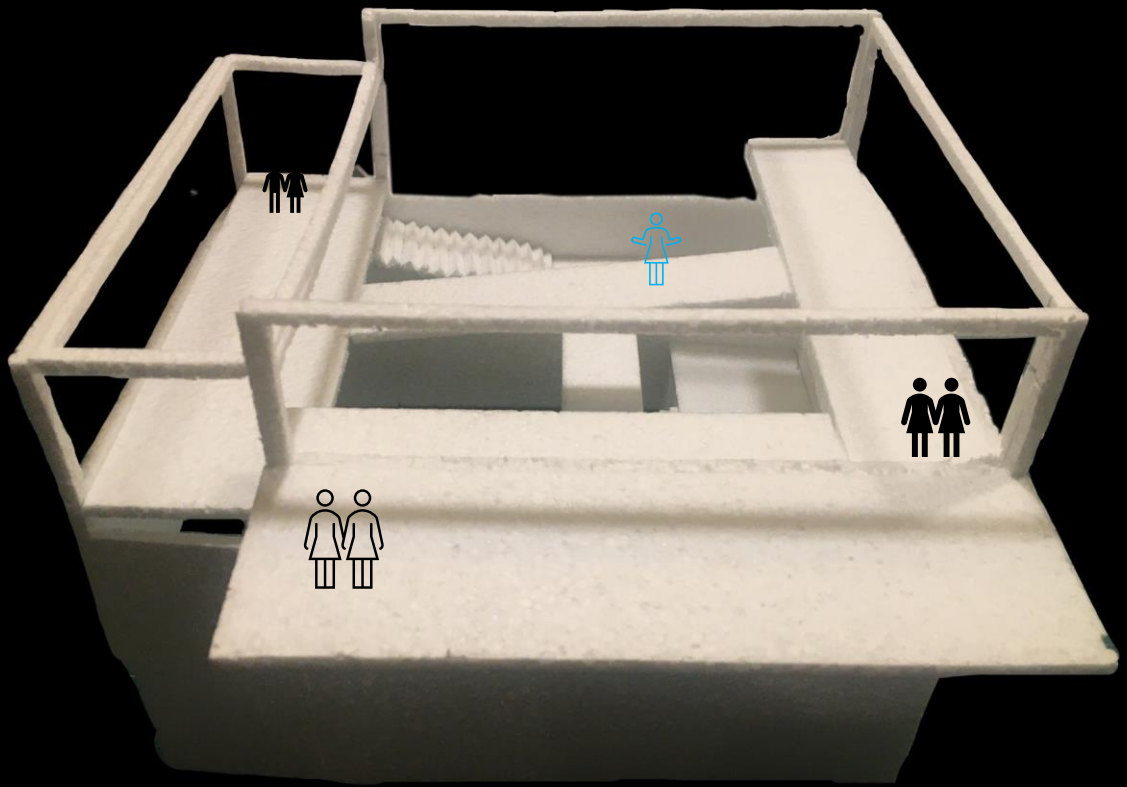


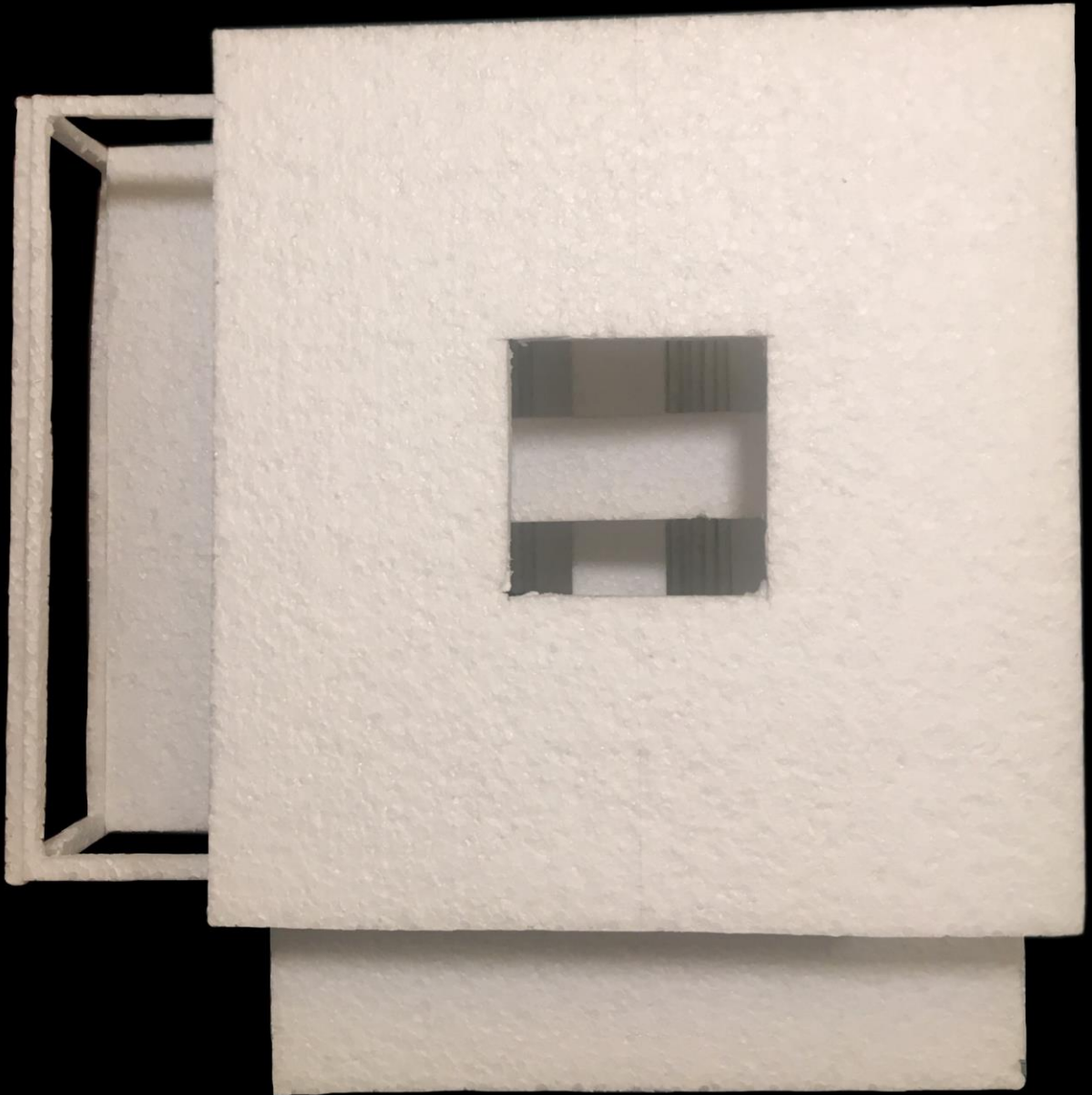


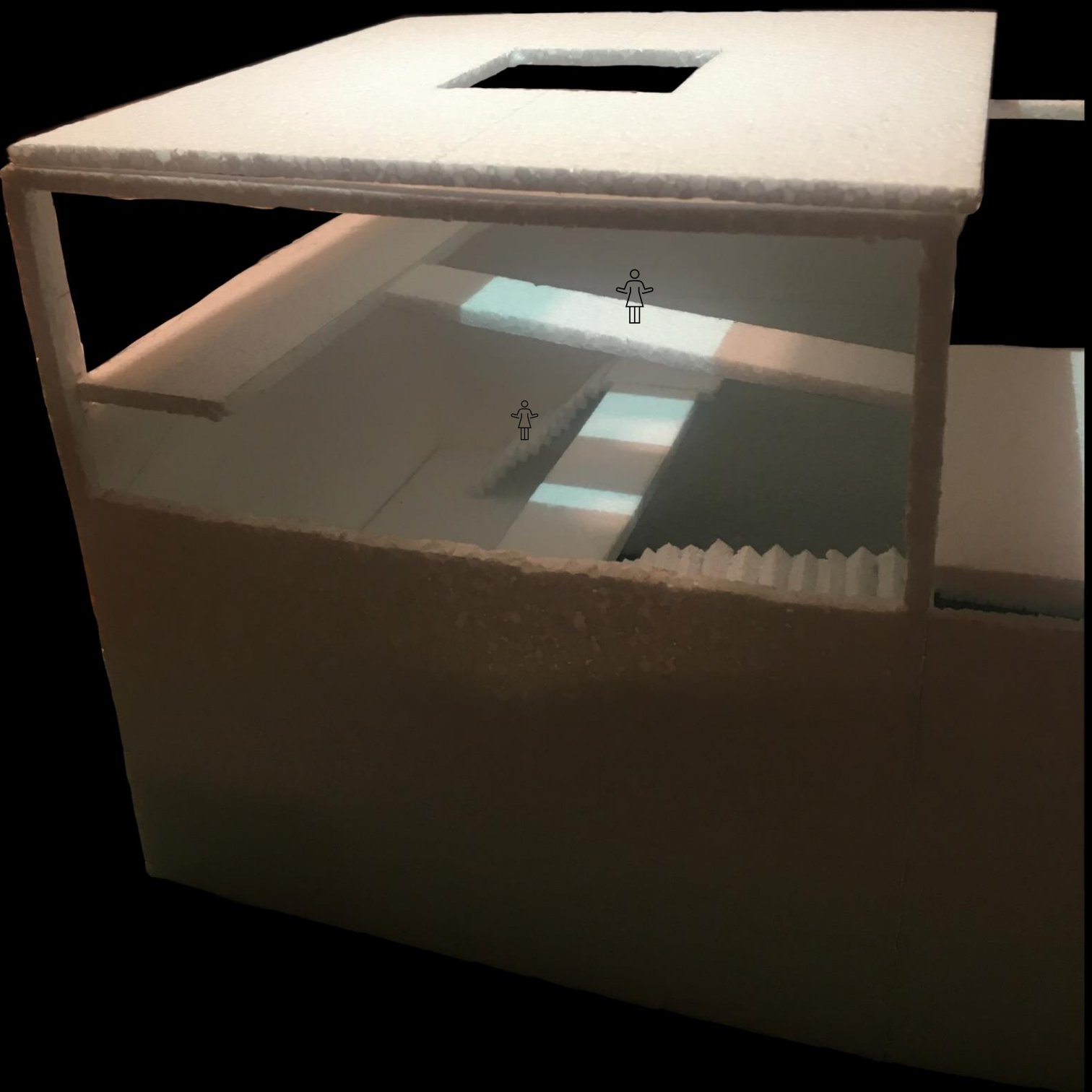
planta e perfil de conjunto



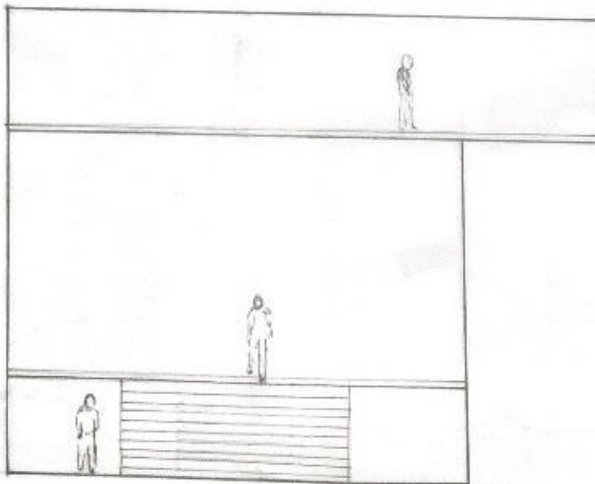
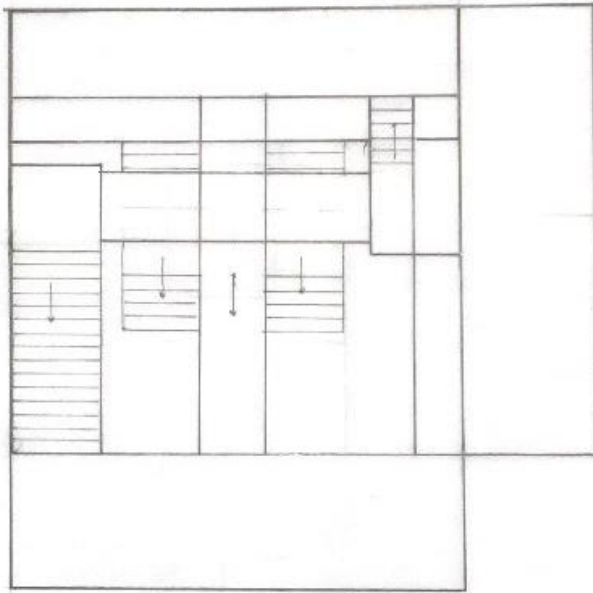






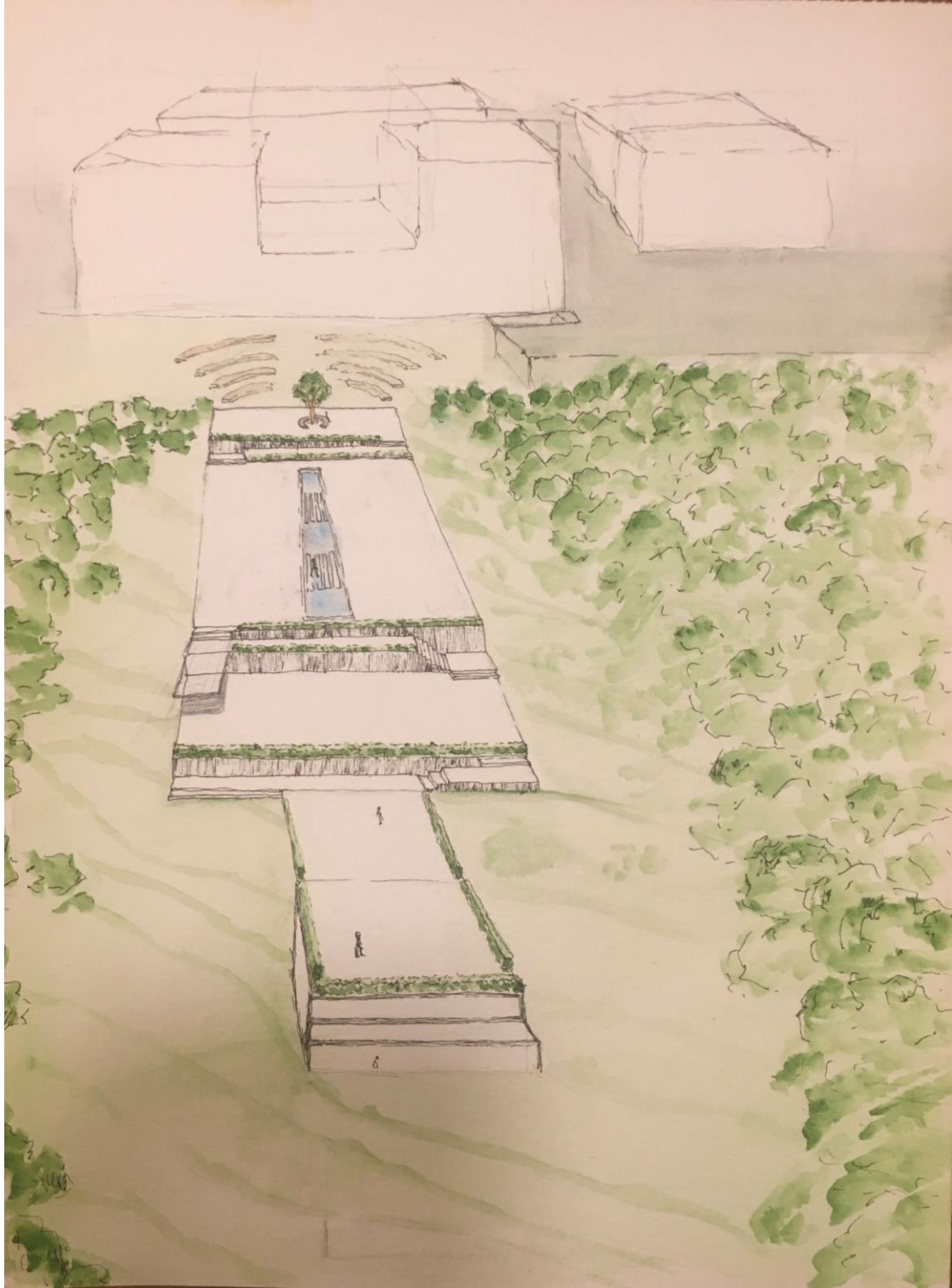


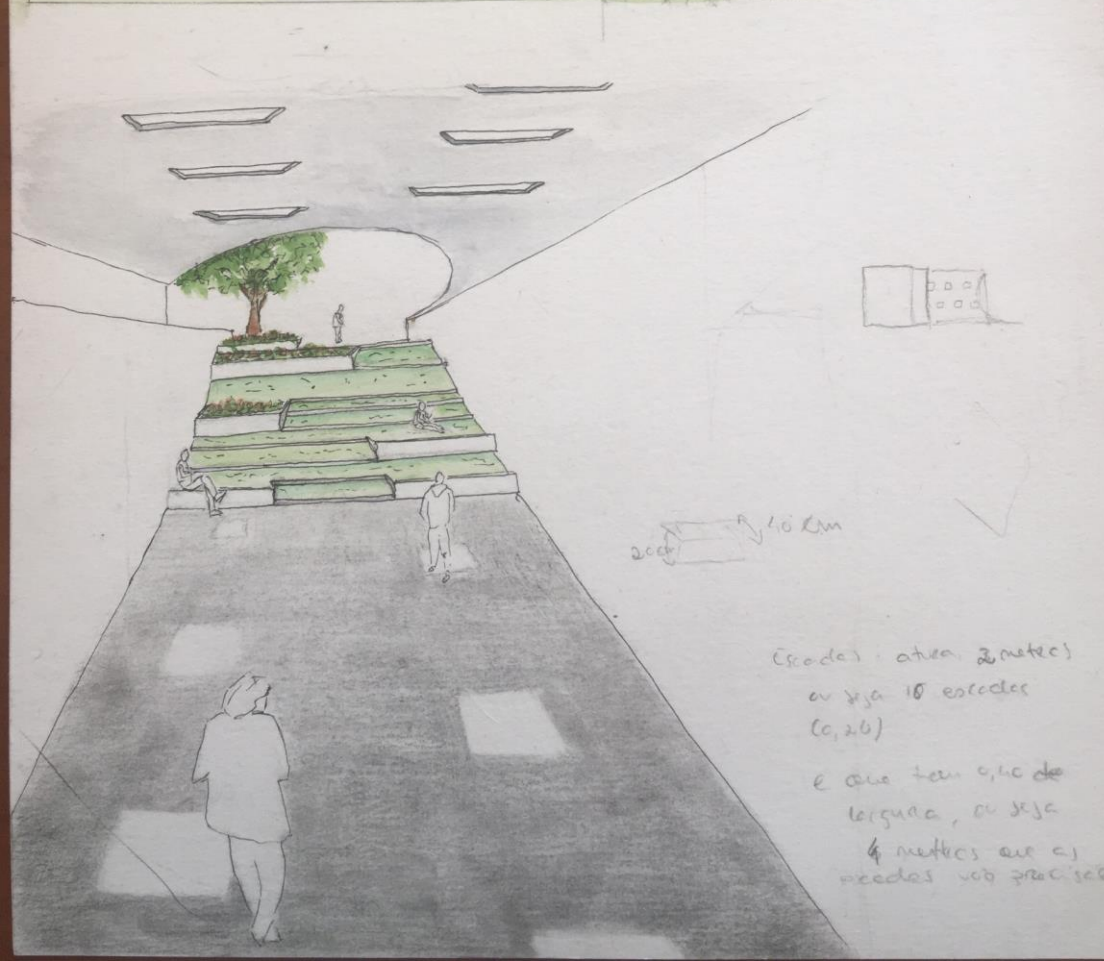
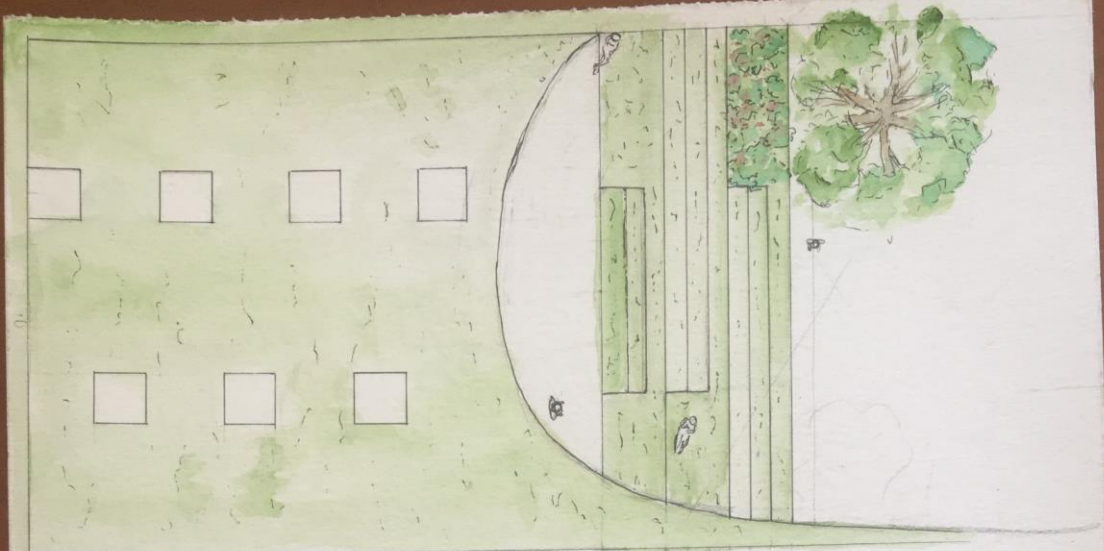




planta e corte

desenho(s) complementares

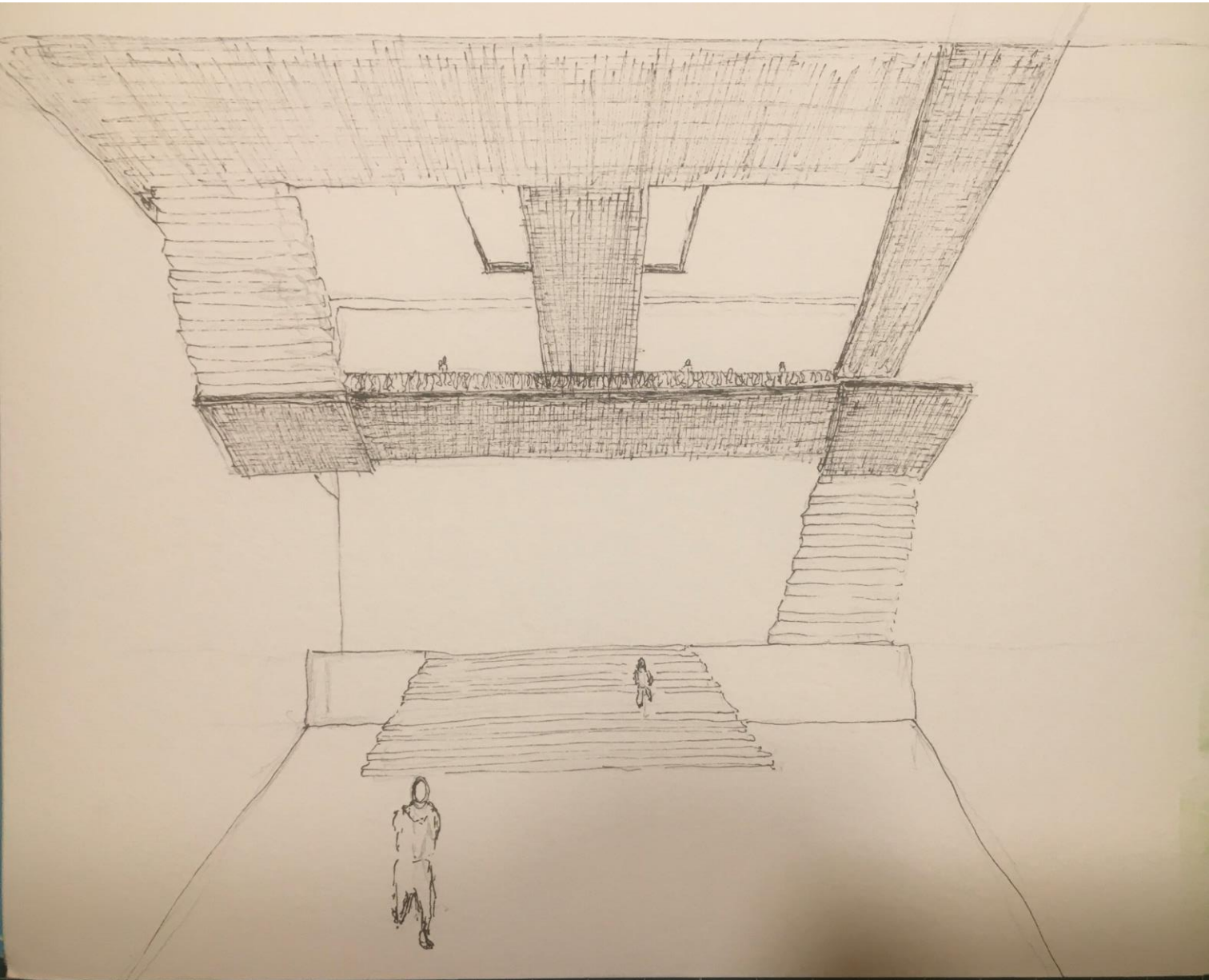




20cm 10 Km

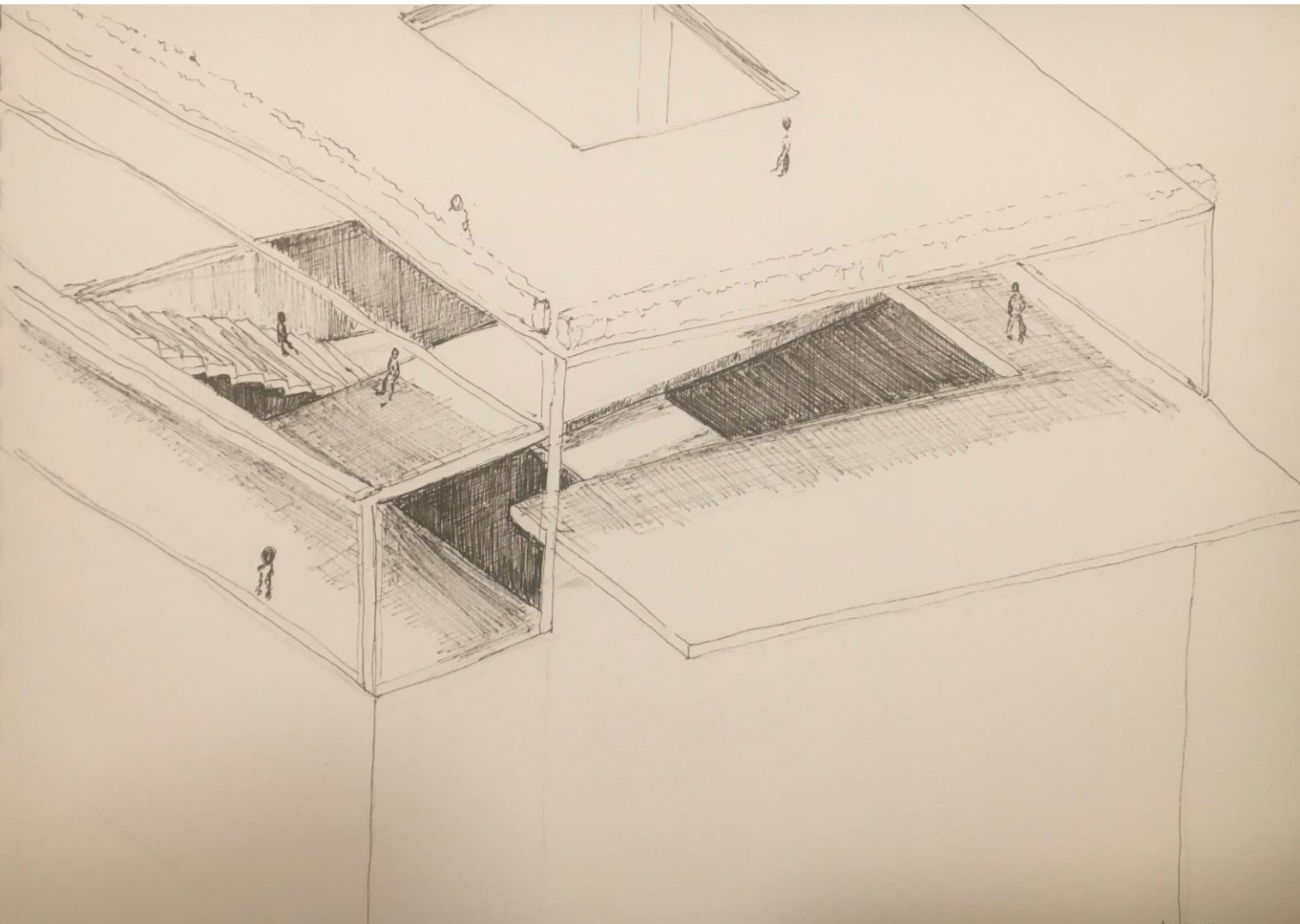
Escadas: altura 2 metros
ou seja 10 escadas
(0,20)
e que tem 0,10 de
largura, ou seja
4 metros que as
escadas vão precisar





visão serial





visão serial



Processo

