

# **Laboratório de Arquitectura II**

**2º semestre**

Carolina Marques dos Santos

# ÍNDICE

## Sítio

Fotografias da maquete 1:1000

Desenho de análise do lugar

Fotografias da maquete proposta 1:1000

## 2ª Fase

### Lado Poente

#### Proposta

Imagem de referência

Citação – Síntese da proposta

Esquiço de síntese

Fotografias da maquete 1:200

Plantas e perfis 1:200

Fotografia da maquete espaço relevante 1:50 (facultativo)

Desenho(s) complementar(es) / visão serial

Fotografias das maquetes de trabalho (várias escalas)

## 1ª Fase

### Lado Nascente

#### Proposta

Imagem de referência

Citação – Síntese da proposta

Esquiço de síntese

Fotografias da maquete 1:200

Planta e perfil de conjunto

Fotografias da maquete 1:50 / 1:20 / ...

Planta e corte 1:50

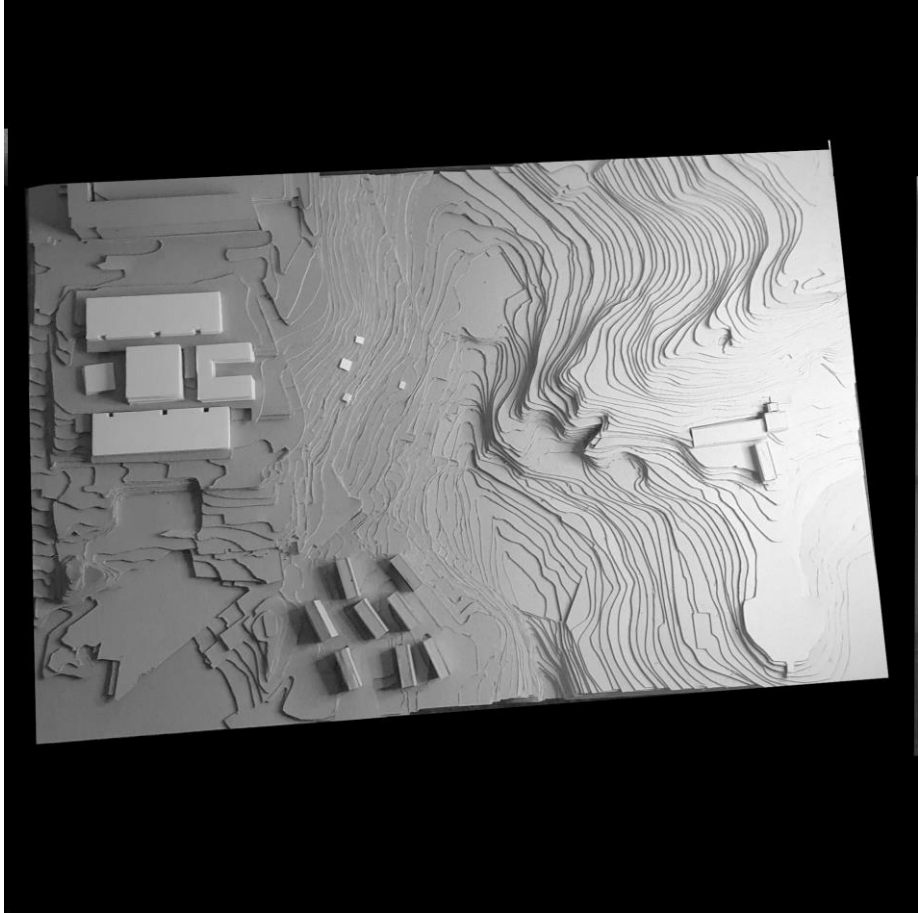
Desenho(s) complementar(es) / visão serial

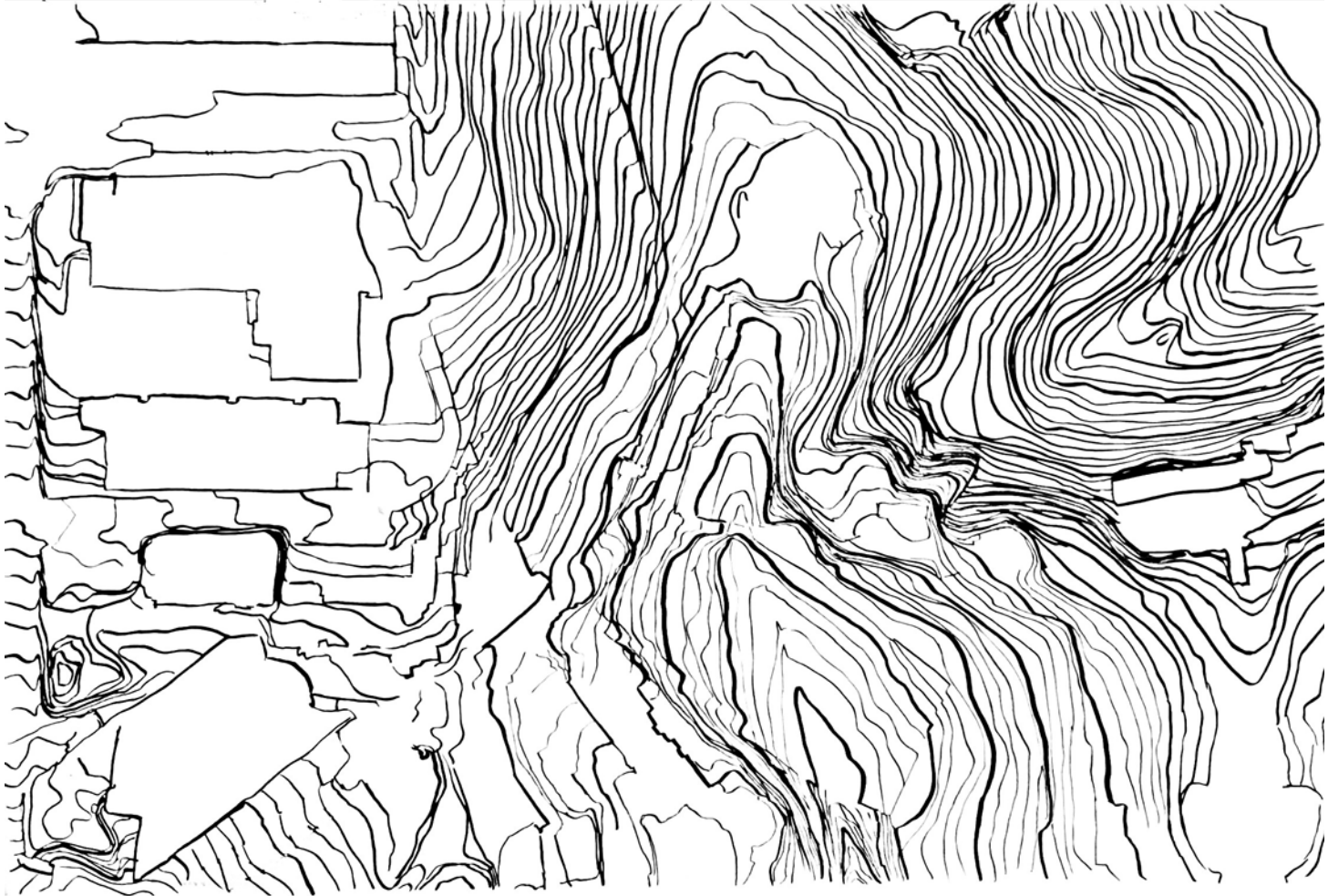
#### Processo

Desenhos exploratórios mais relevantes

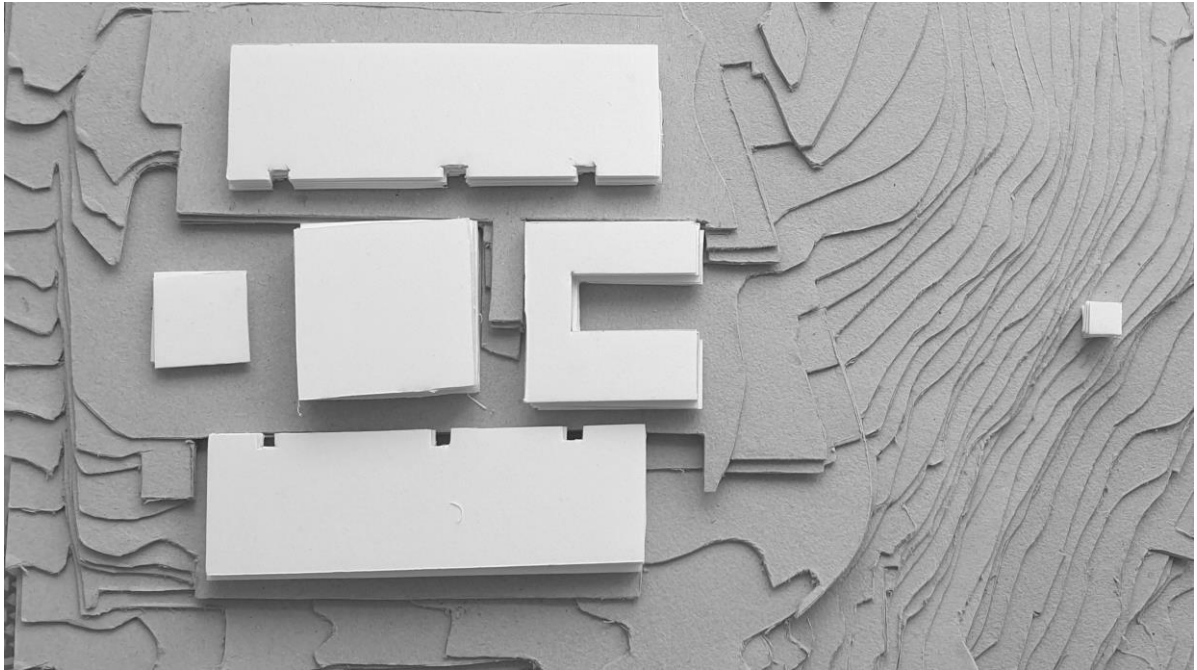
#### Leituras comentadas

**Sítio**





desenho de análise do lugar



# 2ª fase

lado poente

**Proposta**





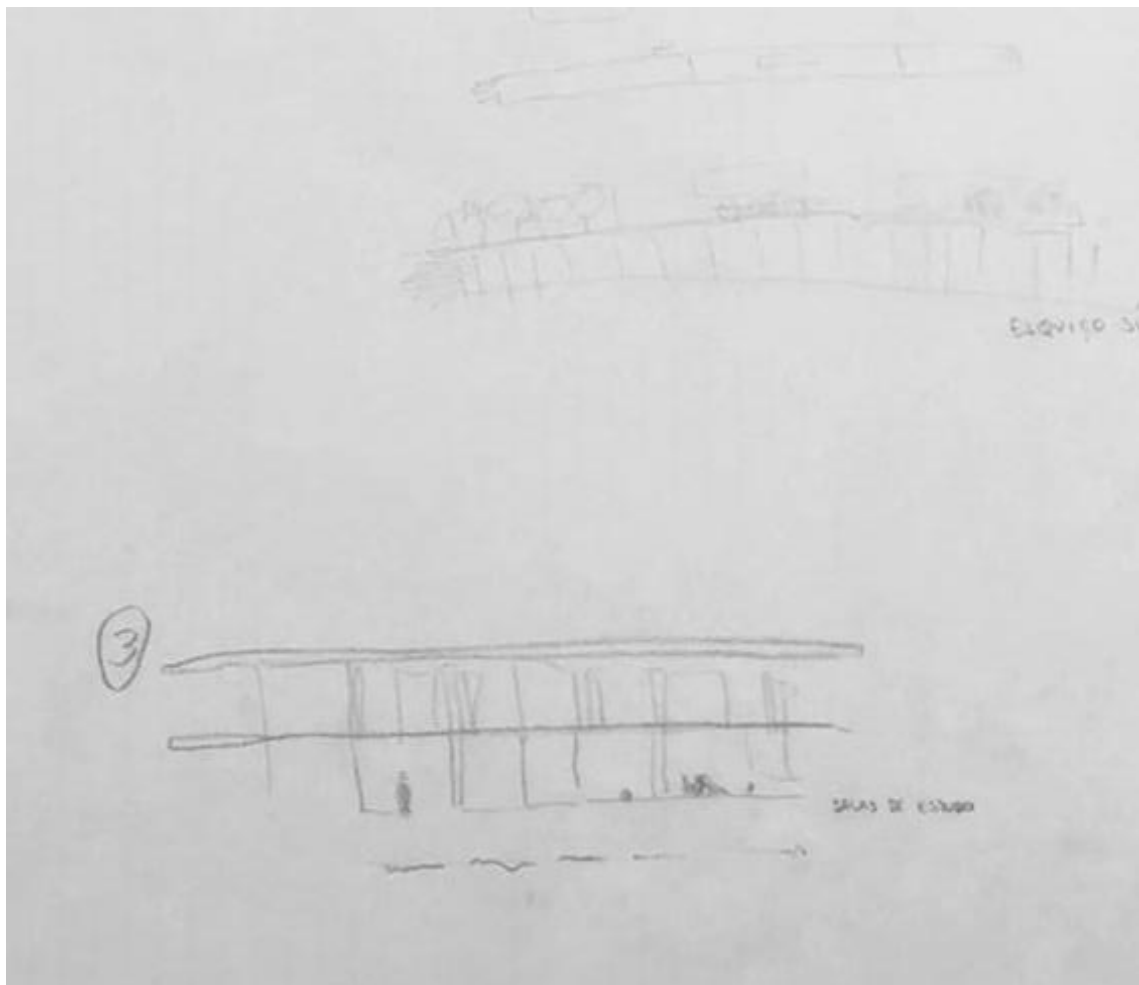
Stoa de Attalos



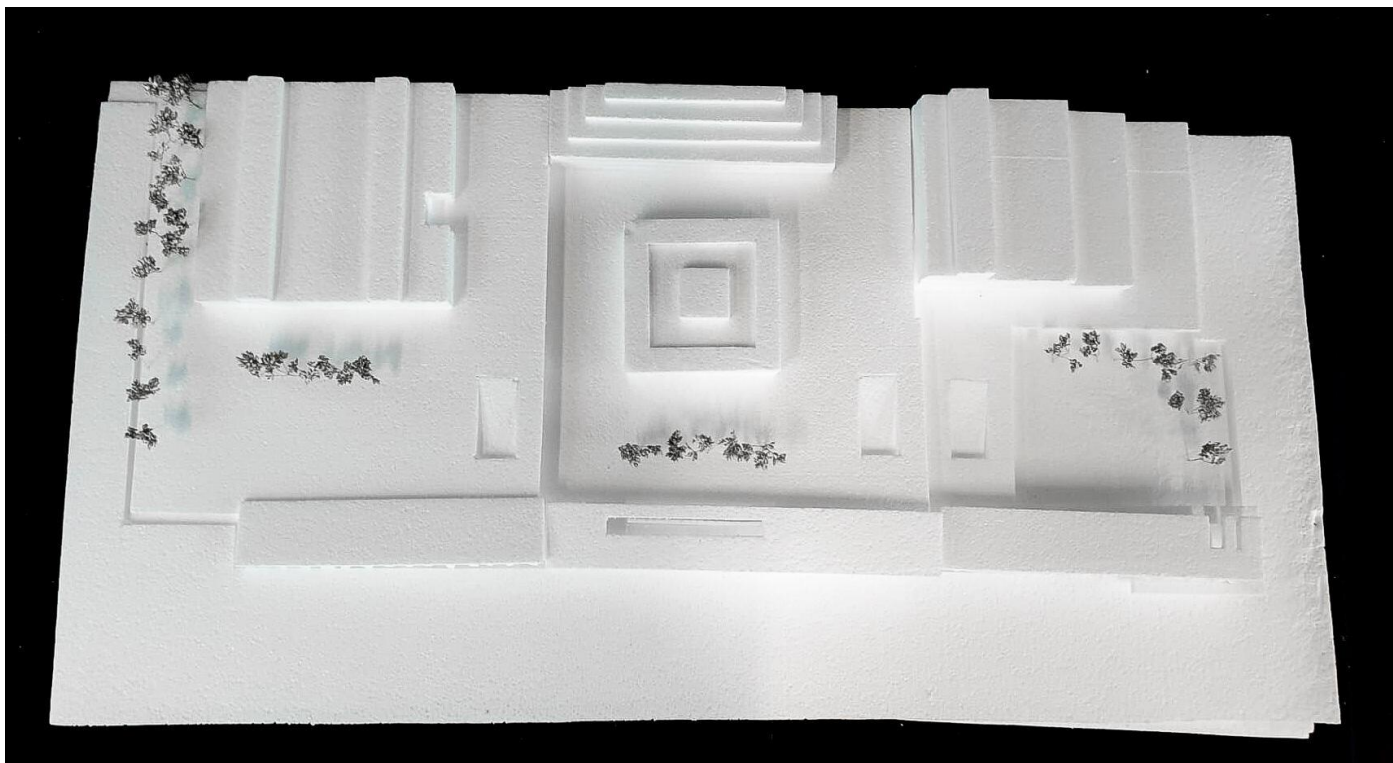
la ville Savoye, le Corbusier

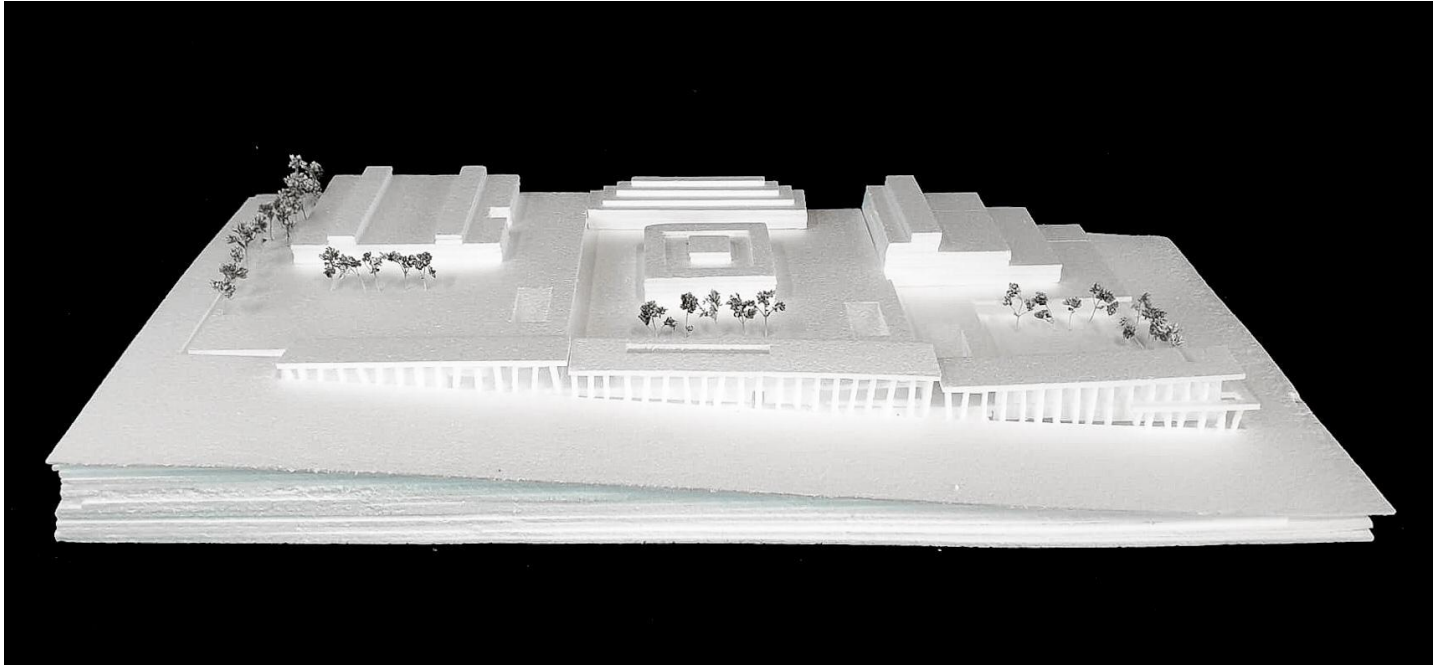
*“ A arquitetura é o jogo sábio, correto e magnífico dos volumes dispostos sobre a luz...”*

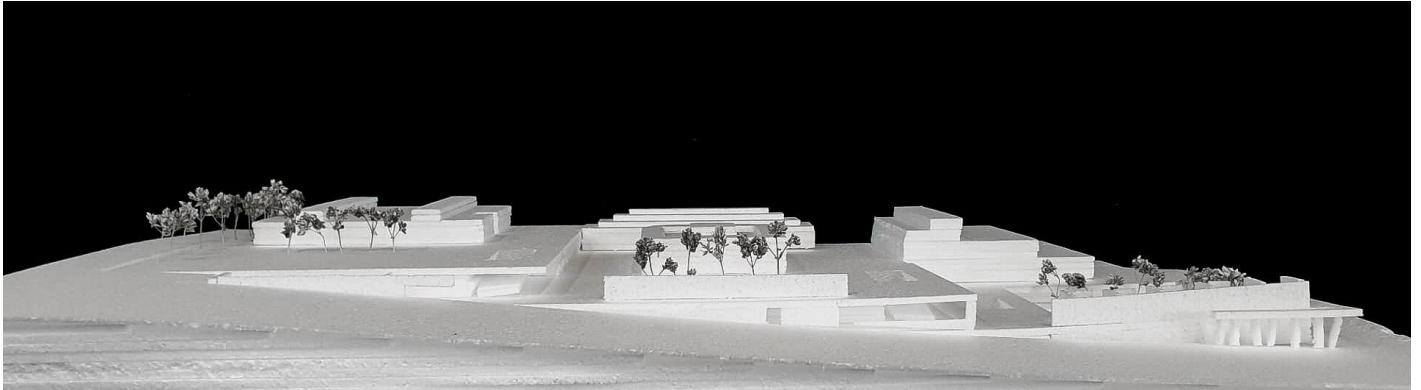
*‘Le Corbusier*



esquiço síntese

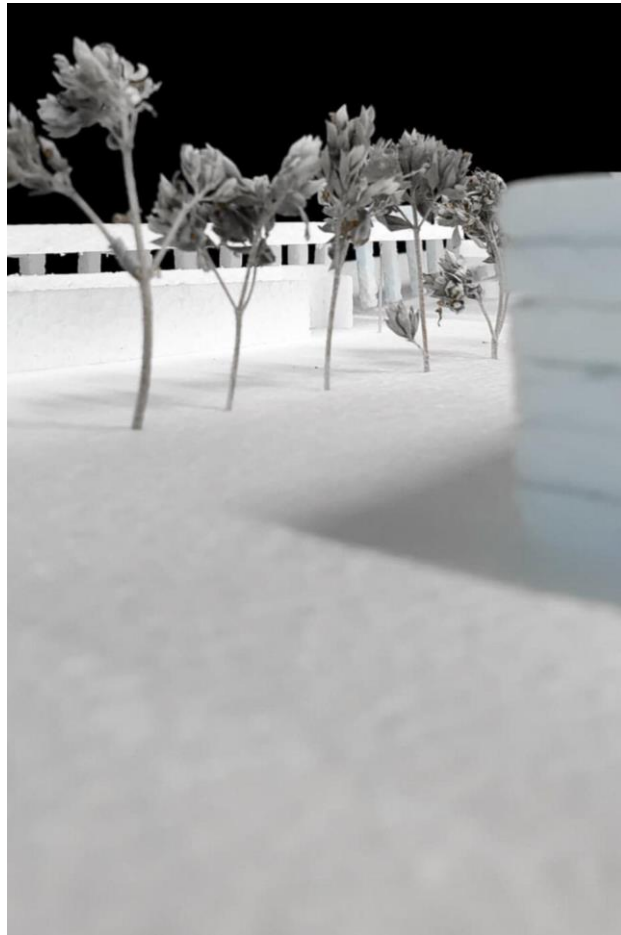


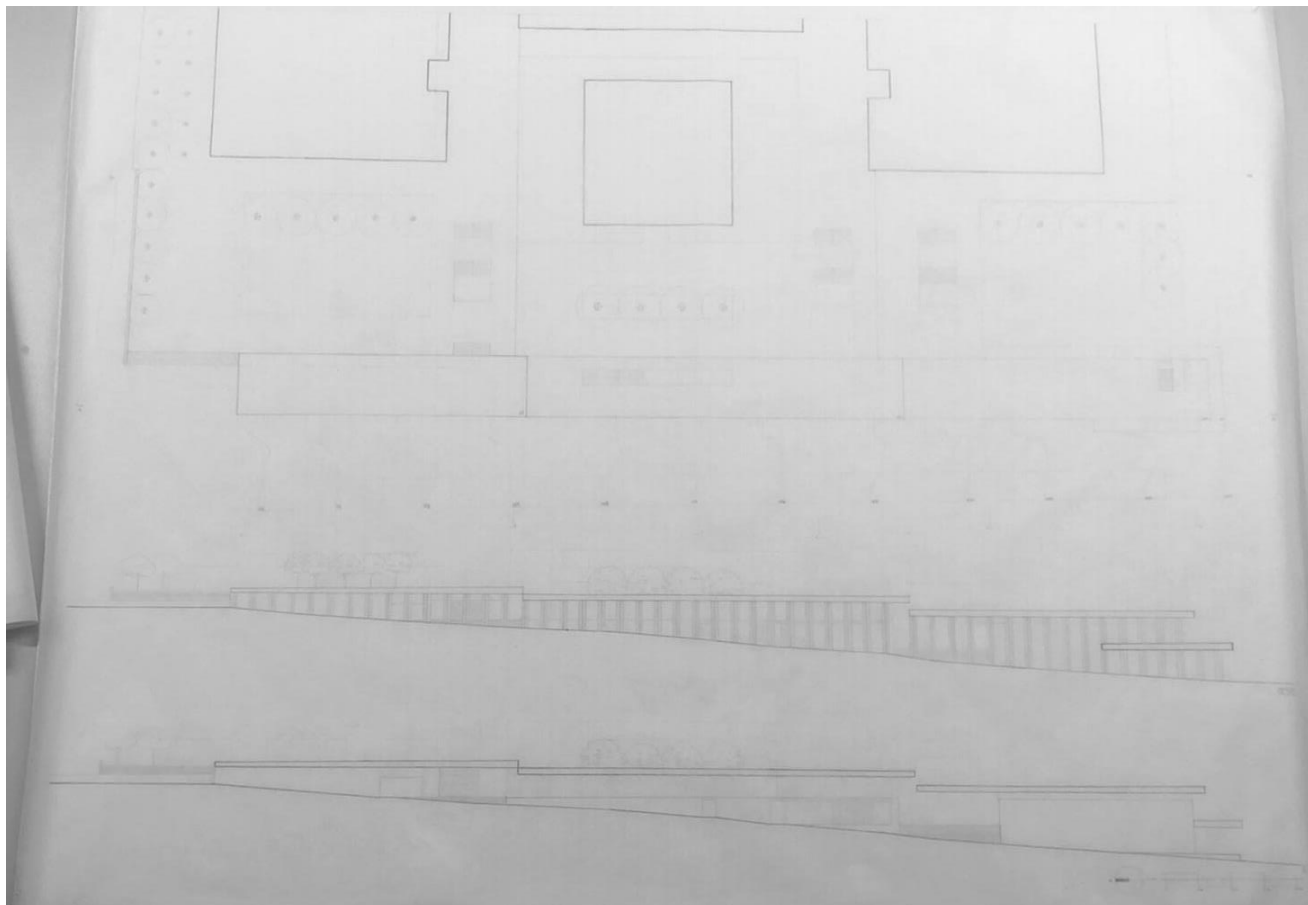




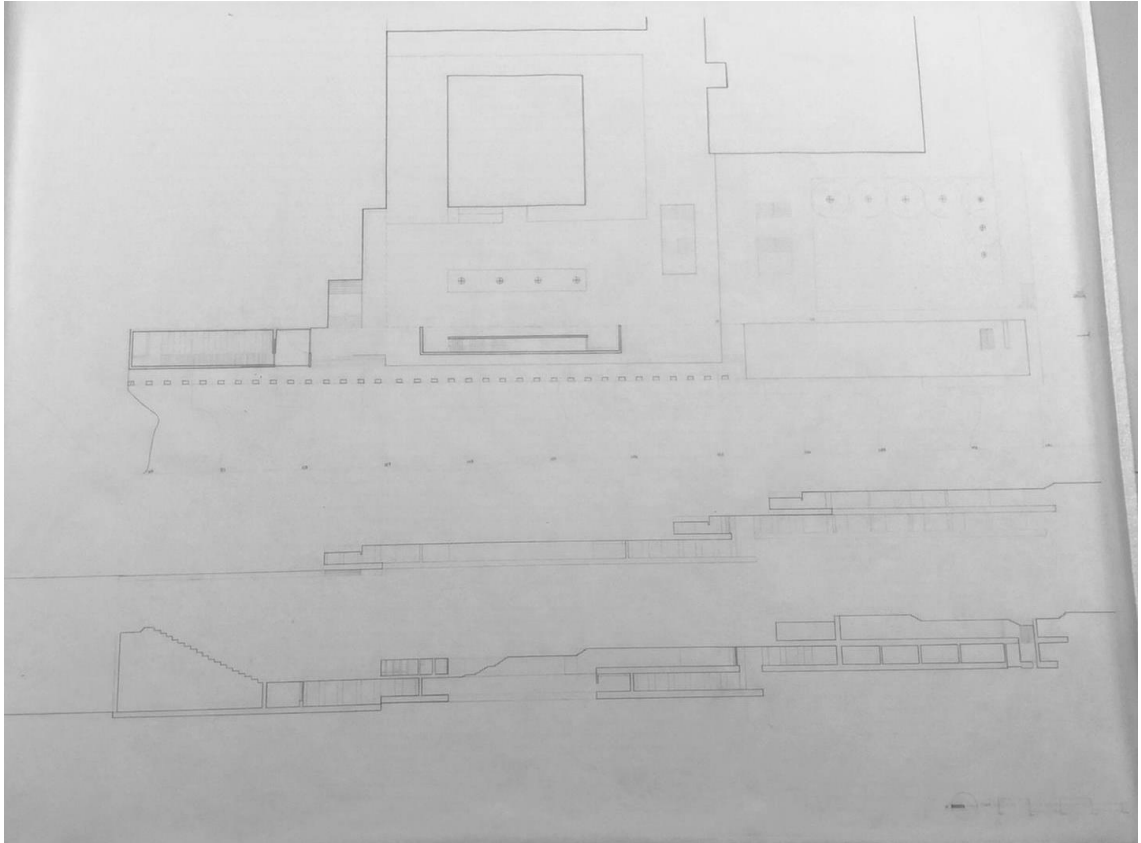


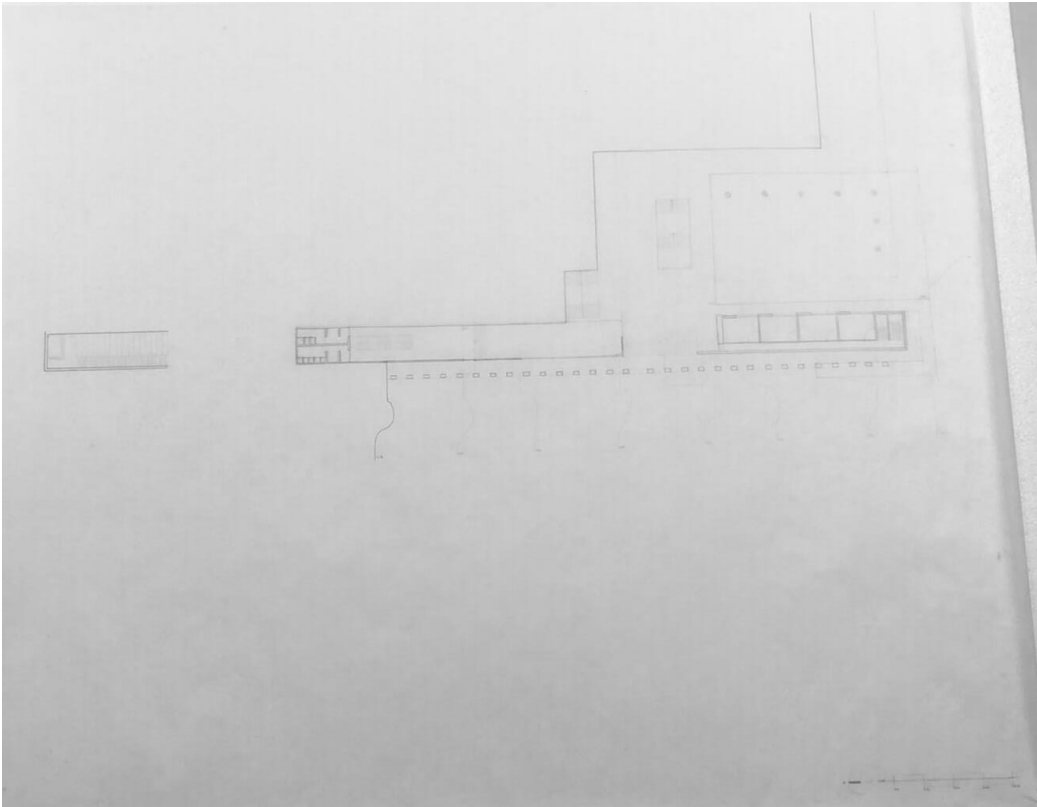


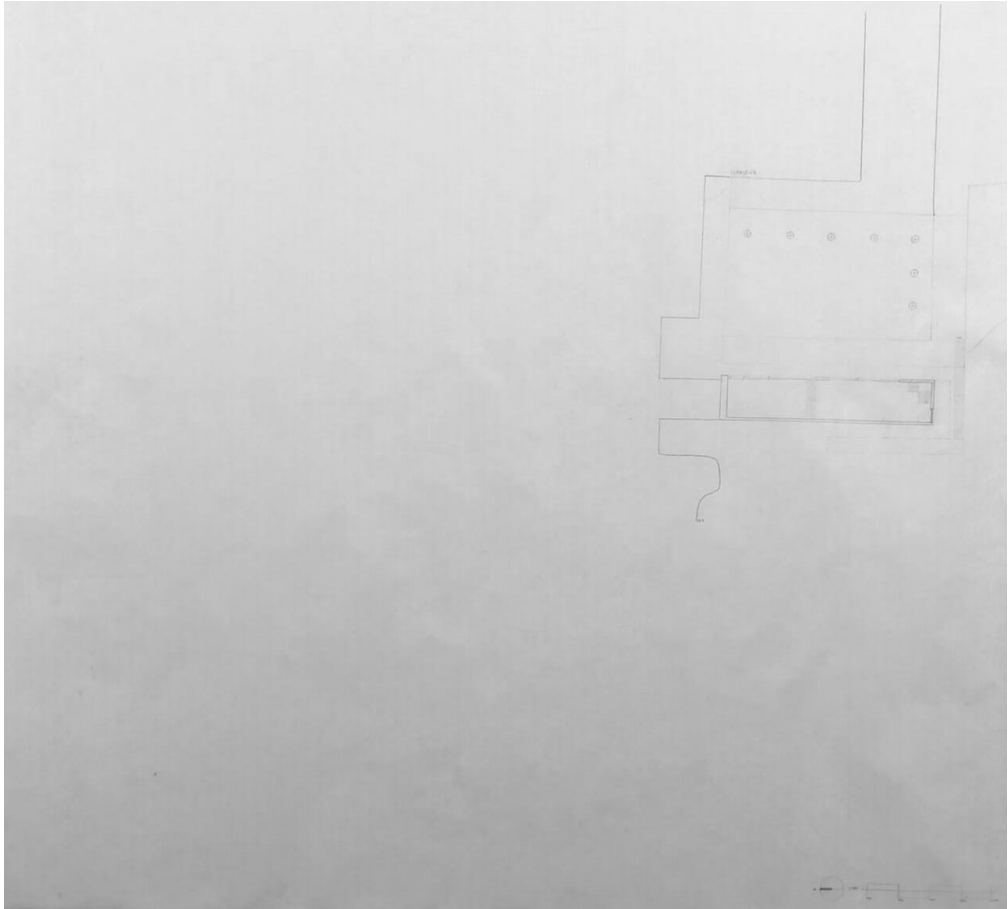


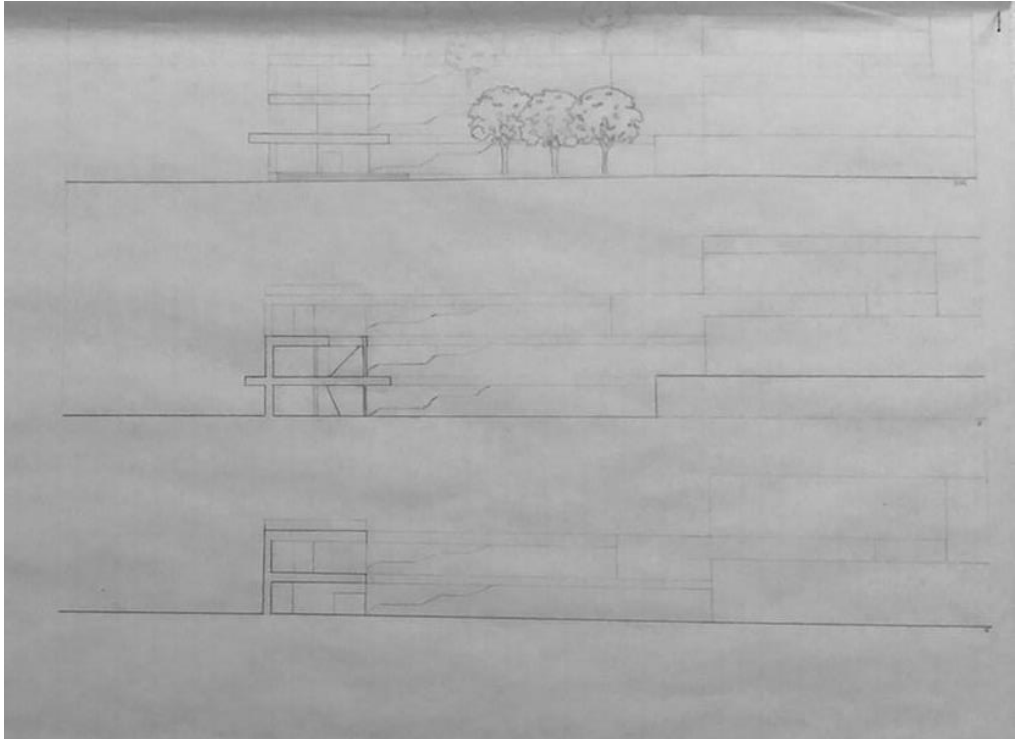


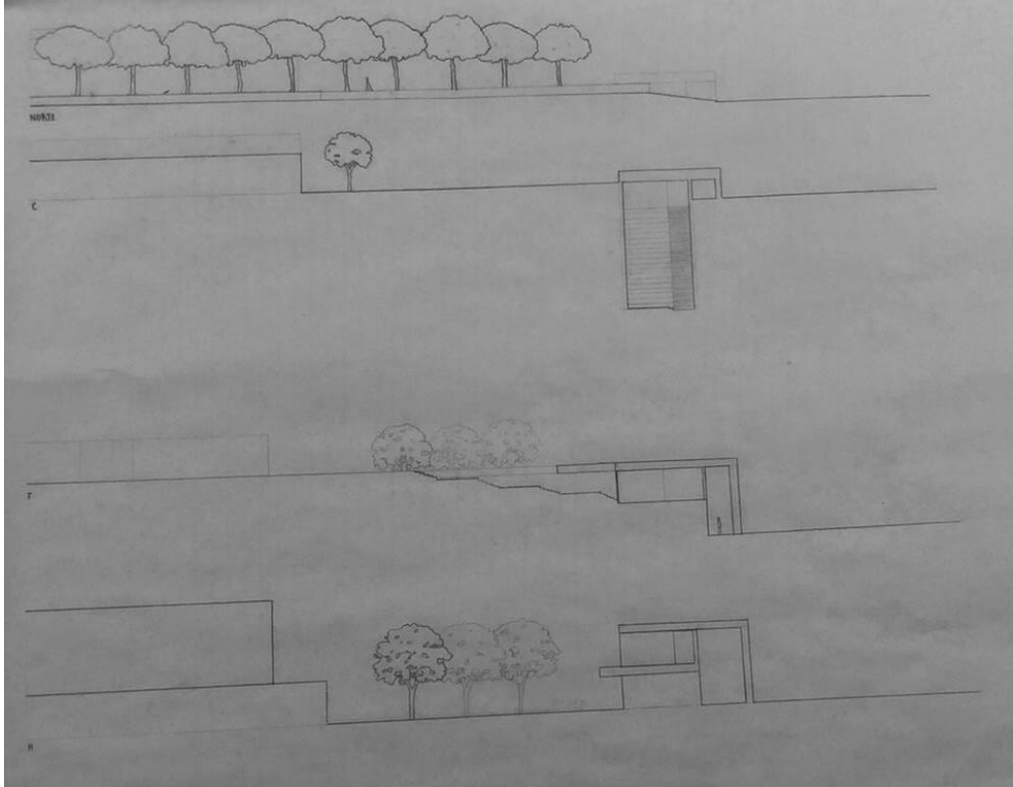
planta e perfil de conjunto





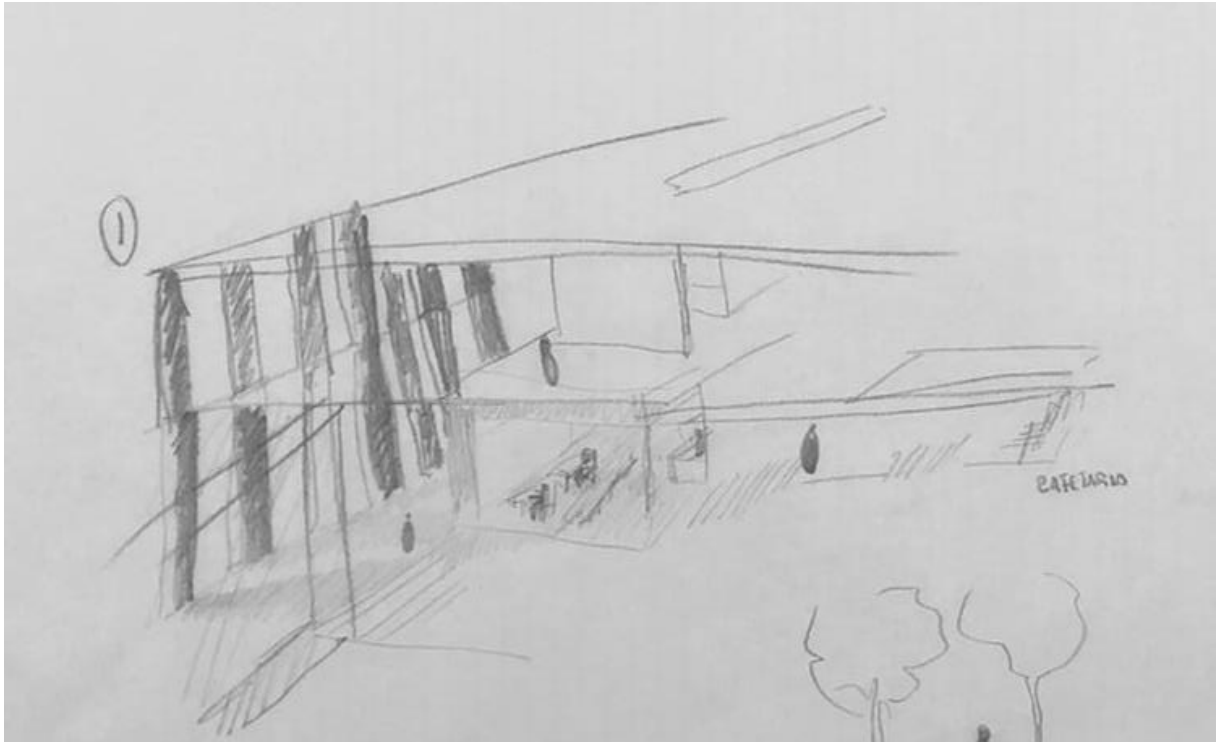




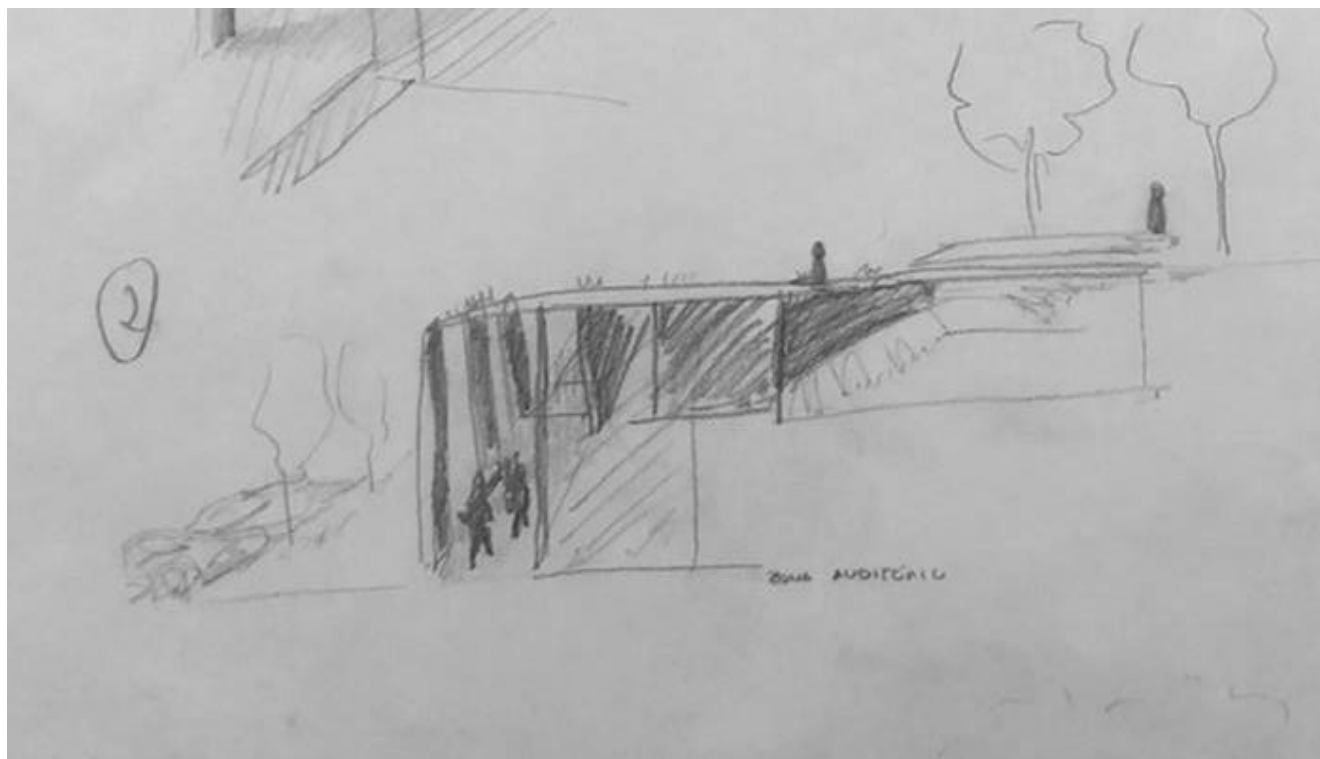


desenho(s) complementares

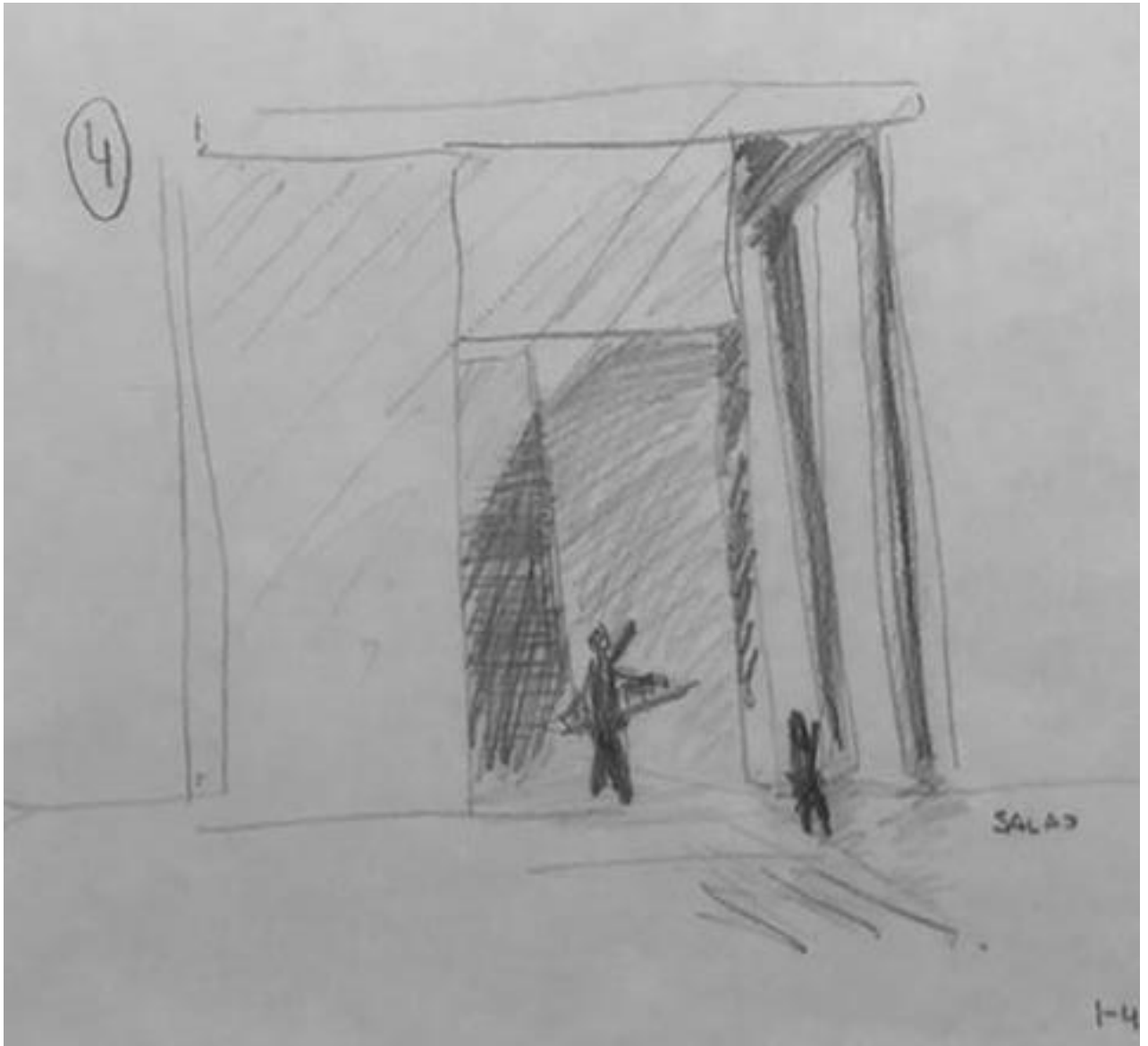




visão serial



visão serial

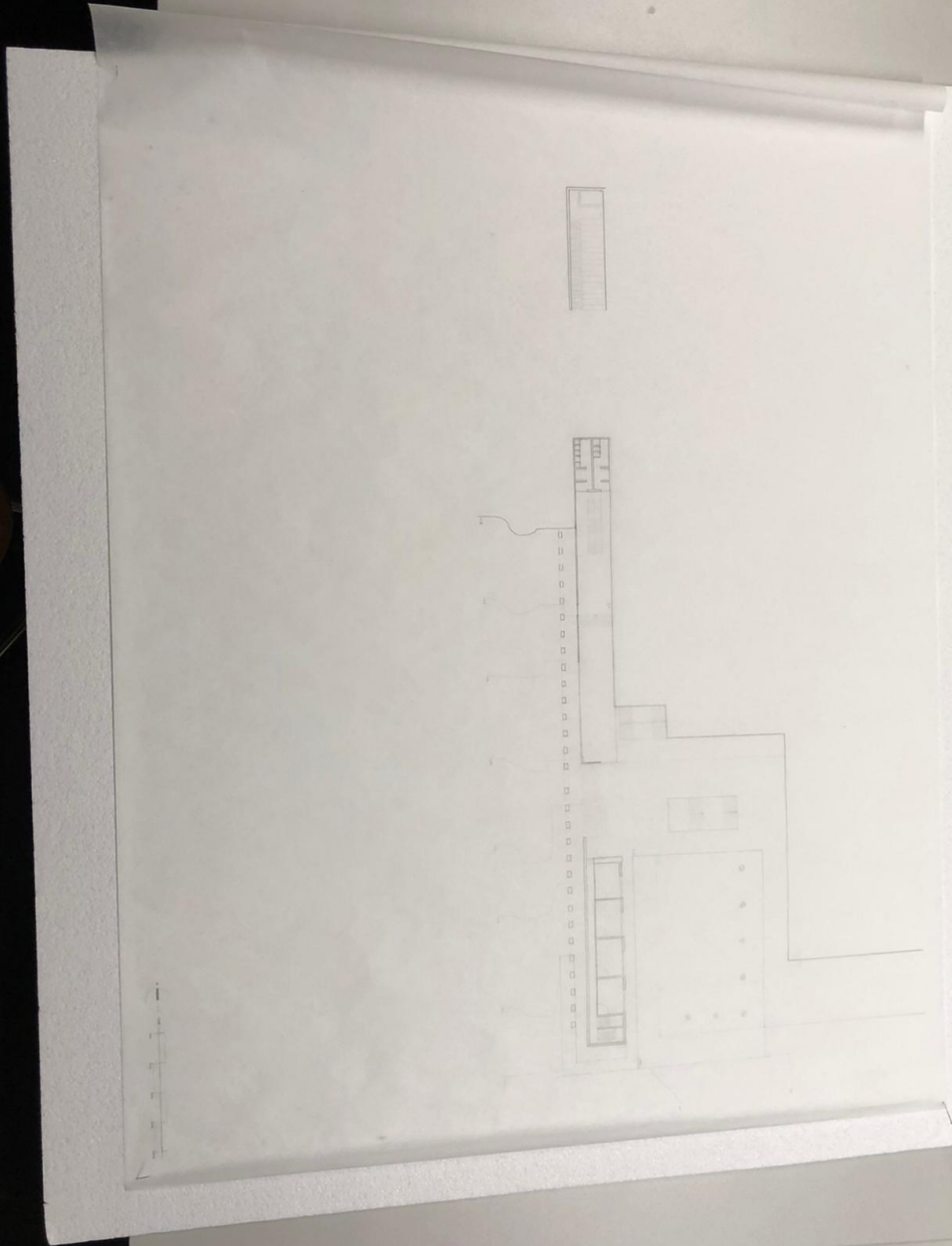


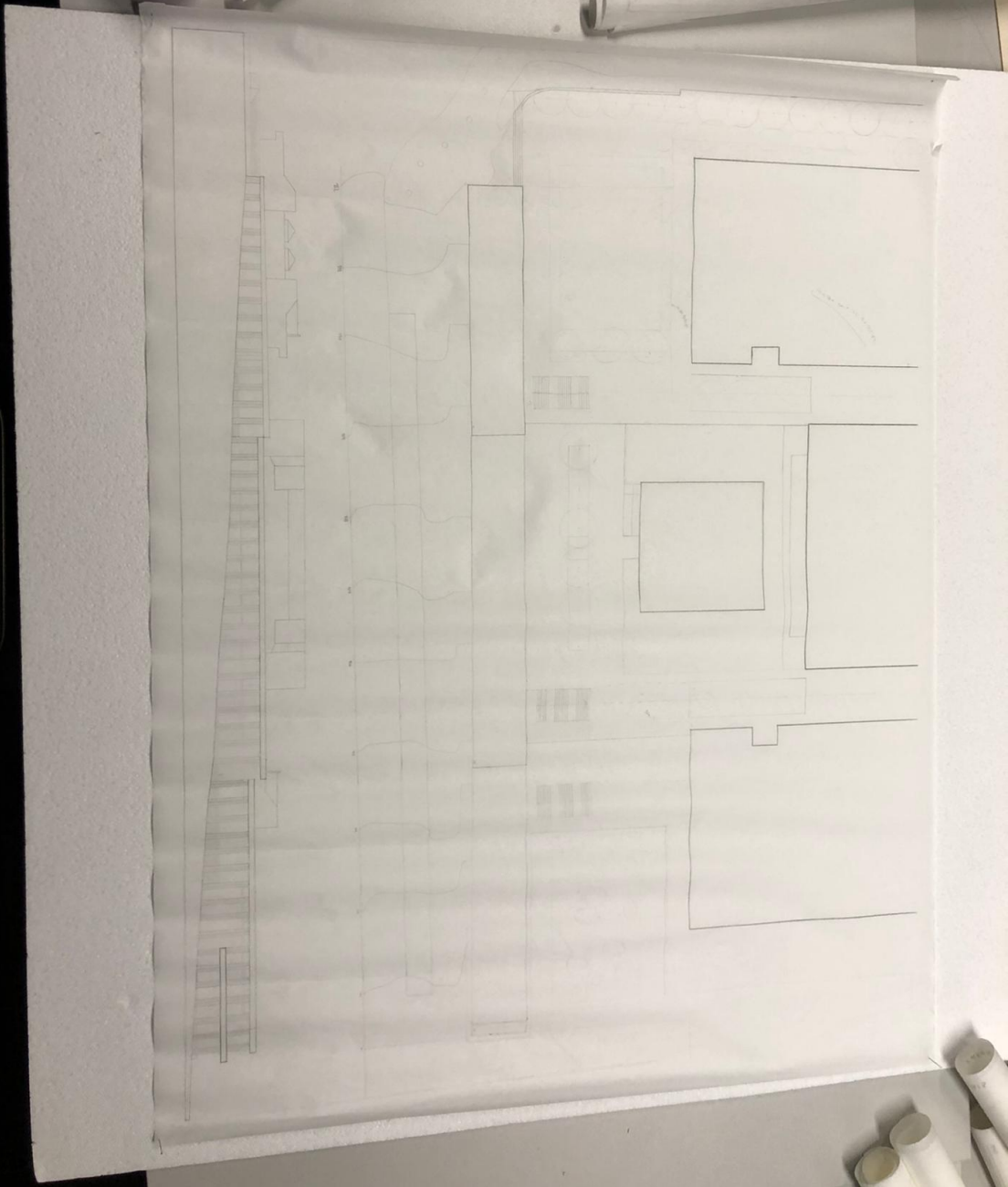
visão serial

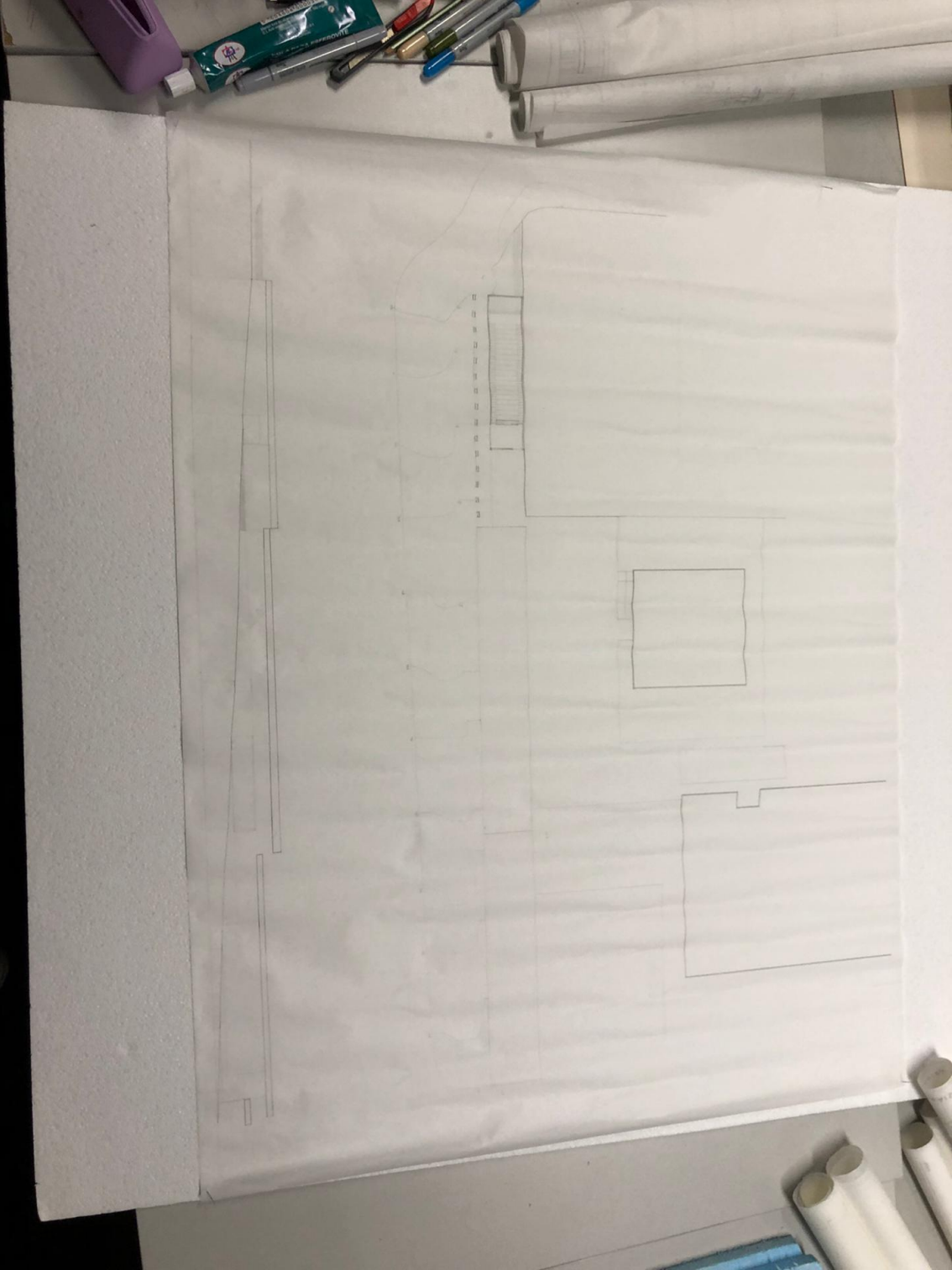


visão serial

Processo









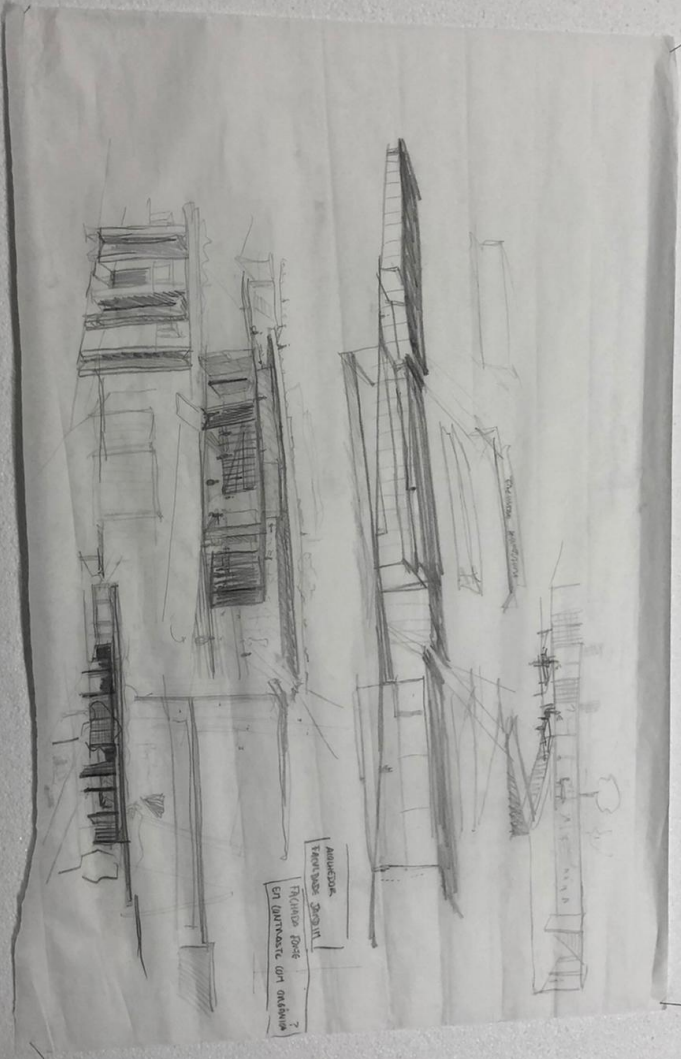






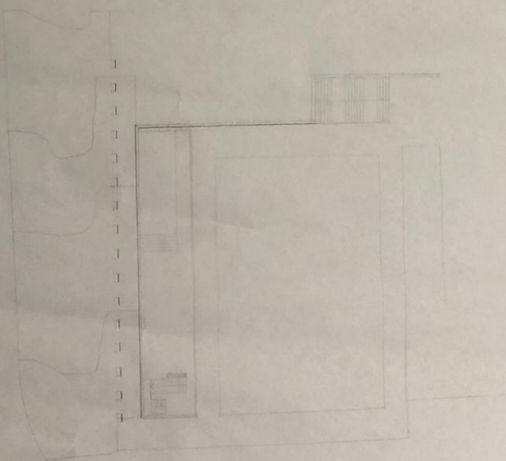


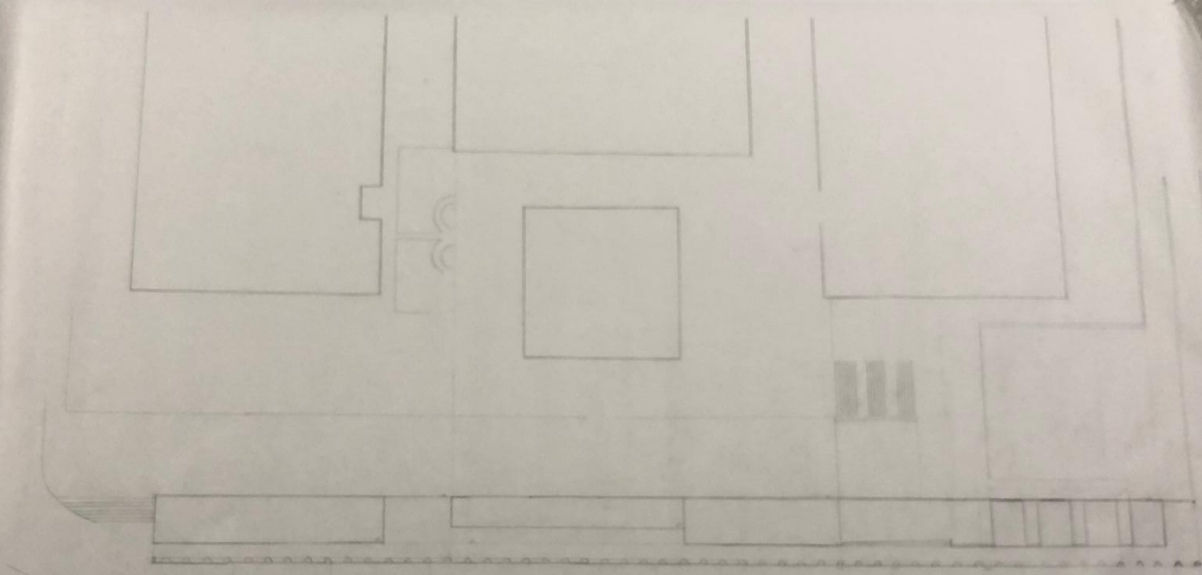




ANNEKSE  
TERRASSE 200/100  
TERRASSE 200/100  
EN OORTRACHT VAN OORANING 2

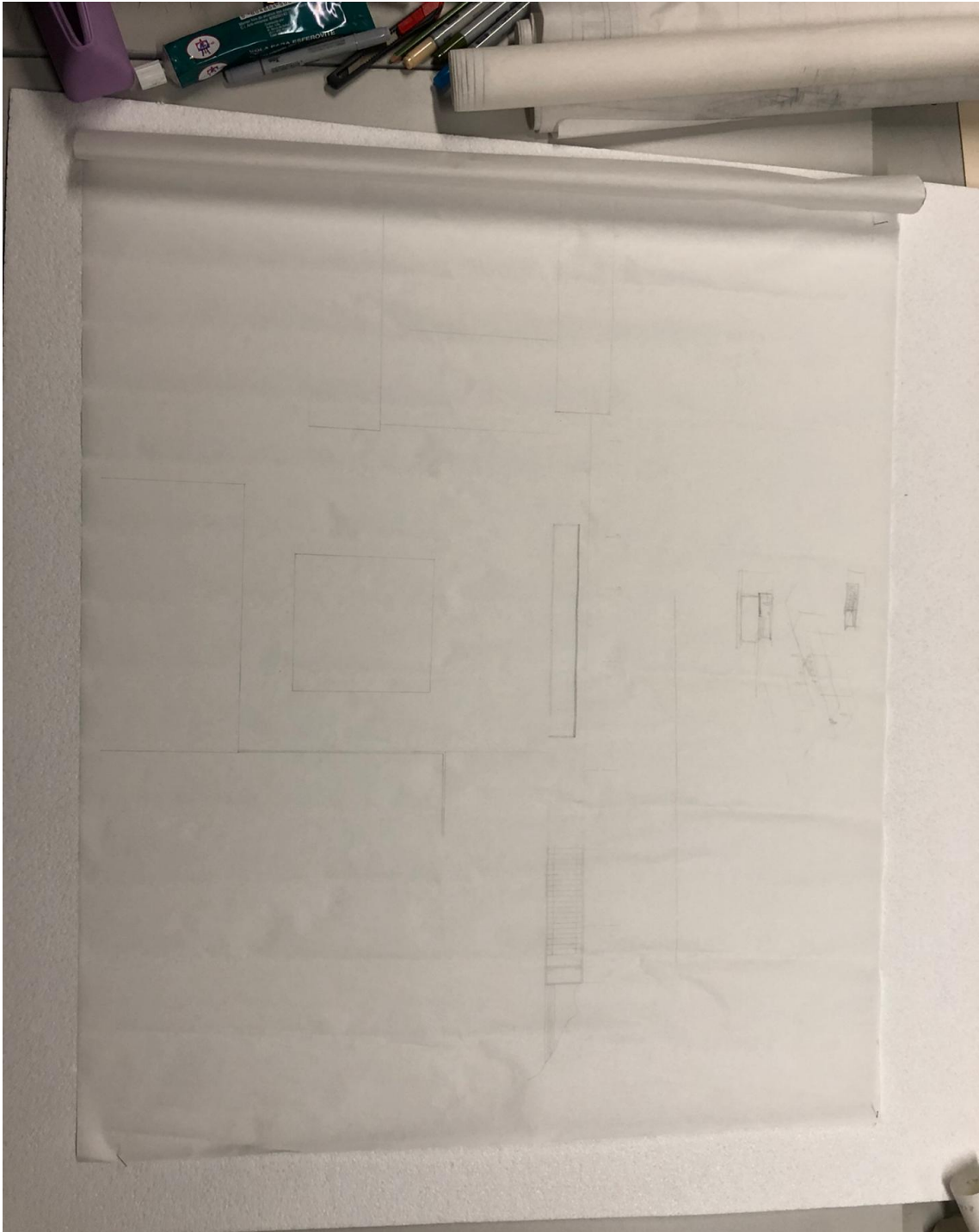
TERRASSE 200/100

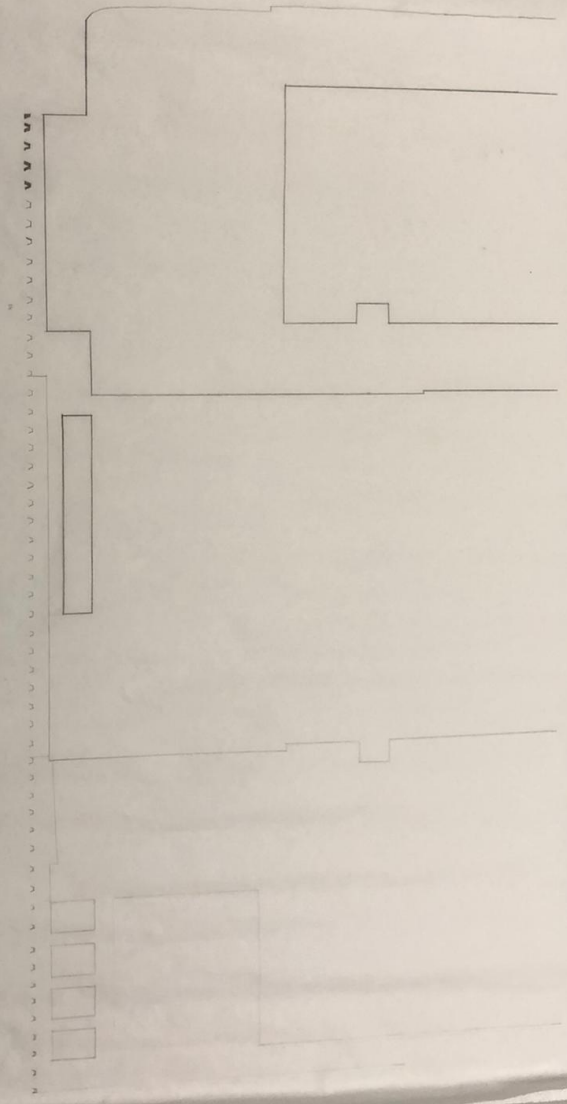


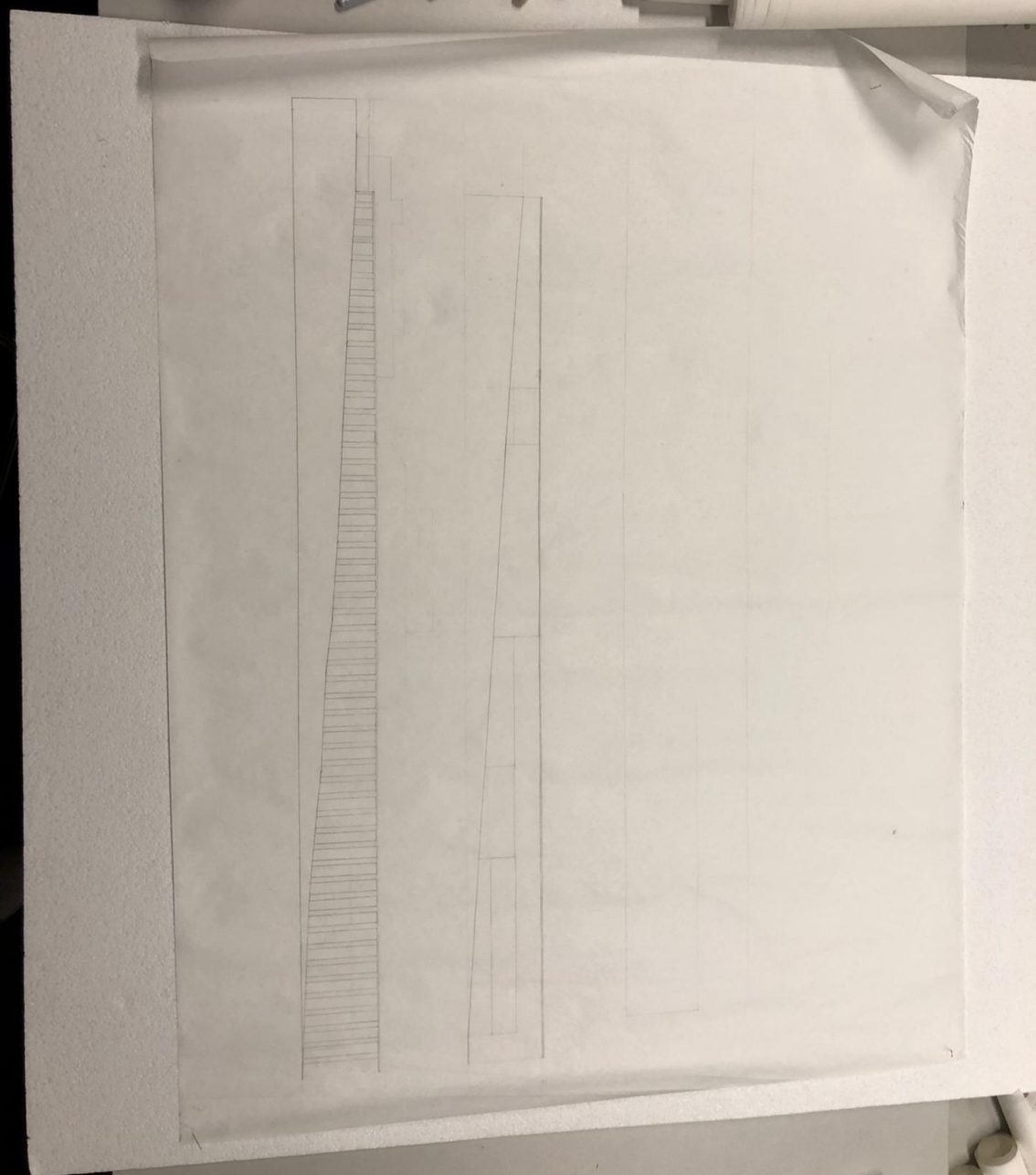


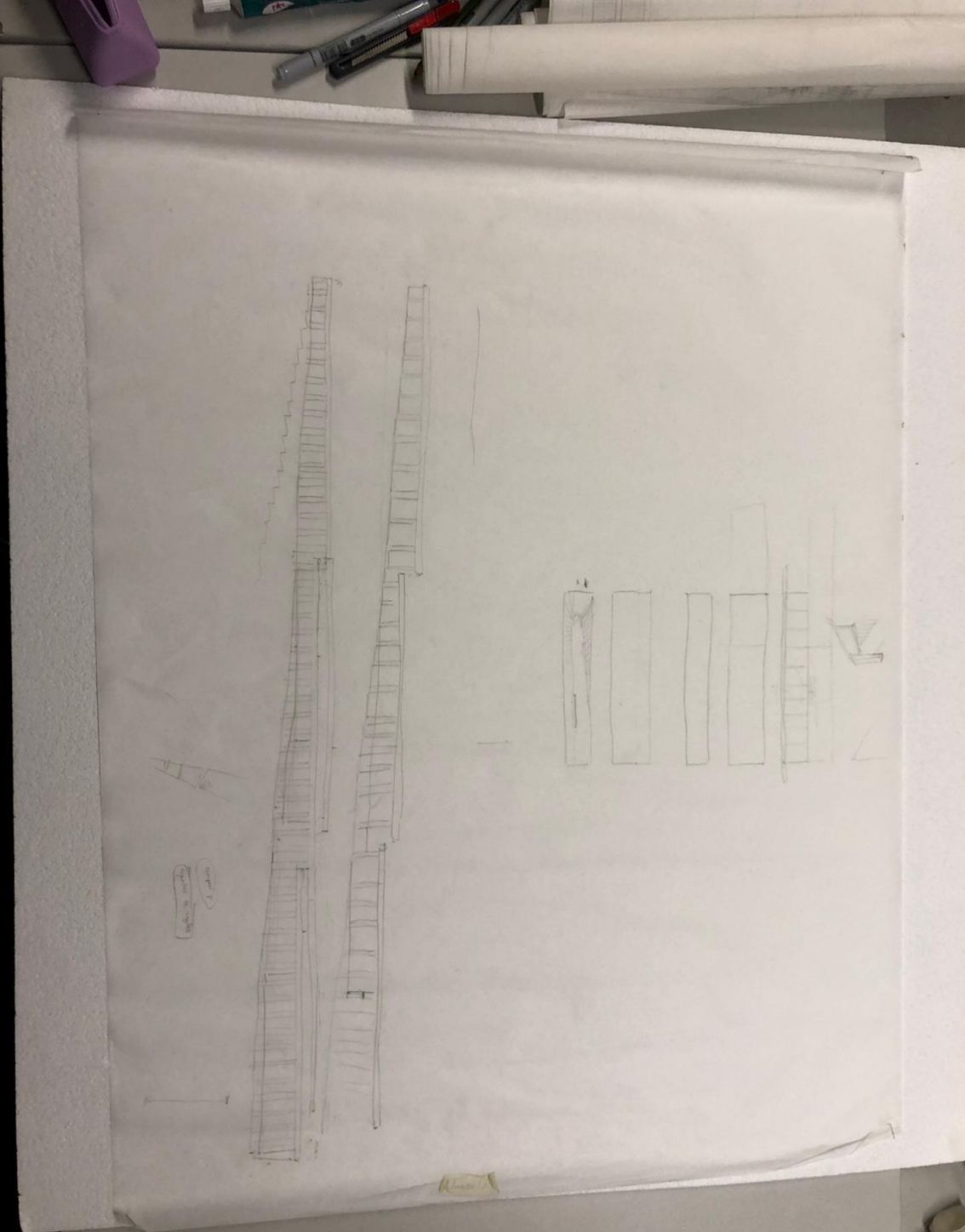












Reconhecimento territorial









BANÁTICA

PORTO BRANDÃO

Sala dos Serenins -  
Antiga Sala da Física

Faculdade de Medicina  
Veterinária da...

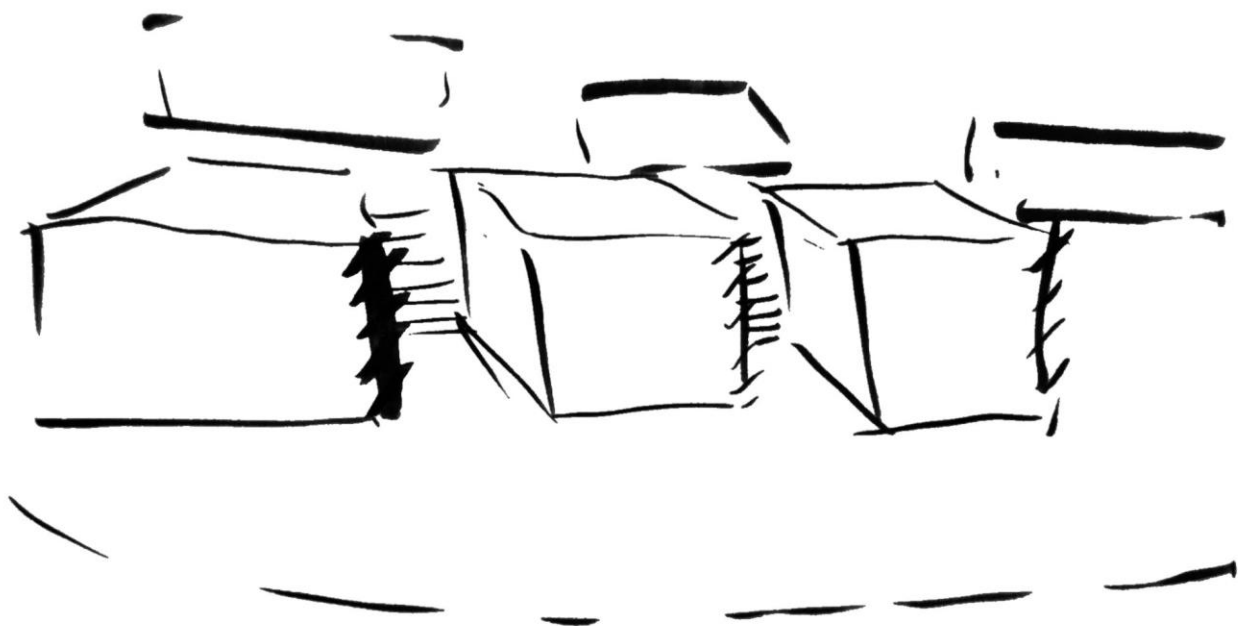


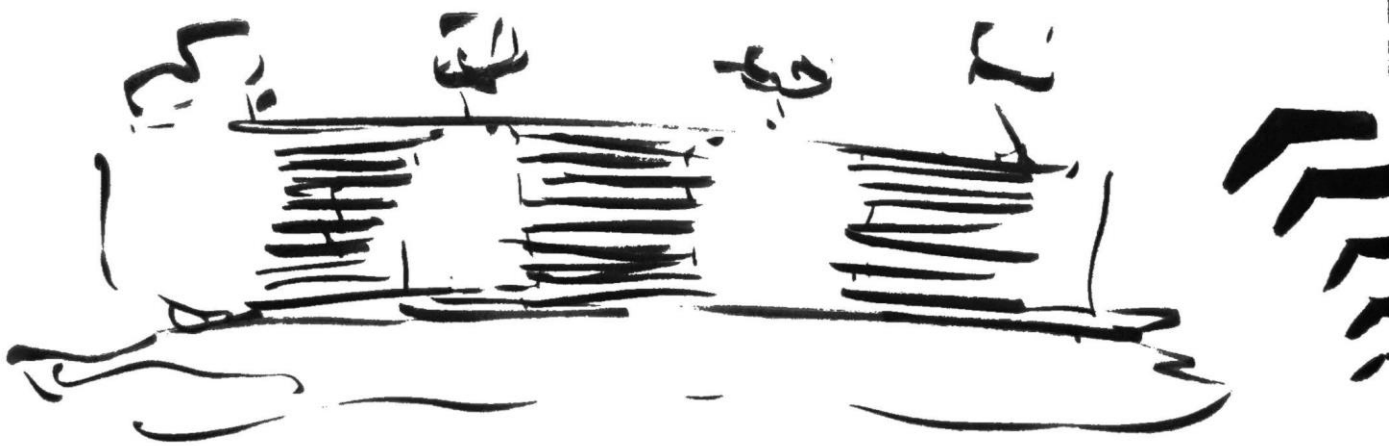




Esquiços













# 1ª fase

lado nascente

**Proposta**



Miami Museum Garage, WORKac, J. Mayer H., Clavel Arquitectos, Nicolas Buffe, K/R



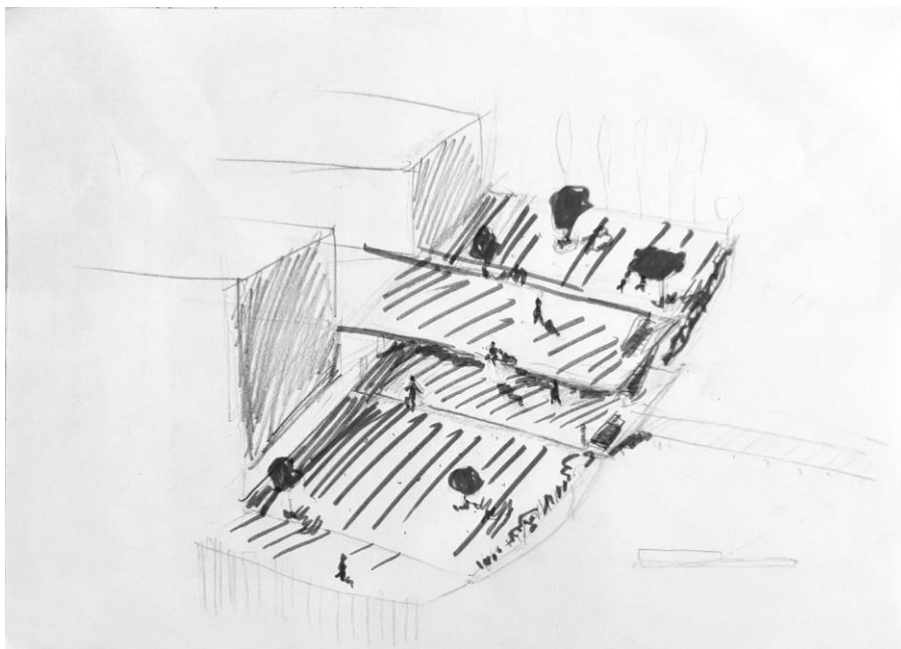


Passadiços do Paiva, Trimetrica

“My own duty and my aim is to try and raise people out of their misery, away from catastrophe; to provide them with happiness, with a contented existence, with harmony. My own goal is to establish or re-establish harmony between people and their environment.”

- Le Corbusier

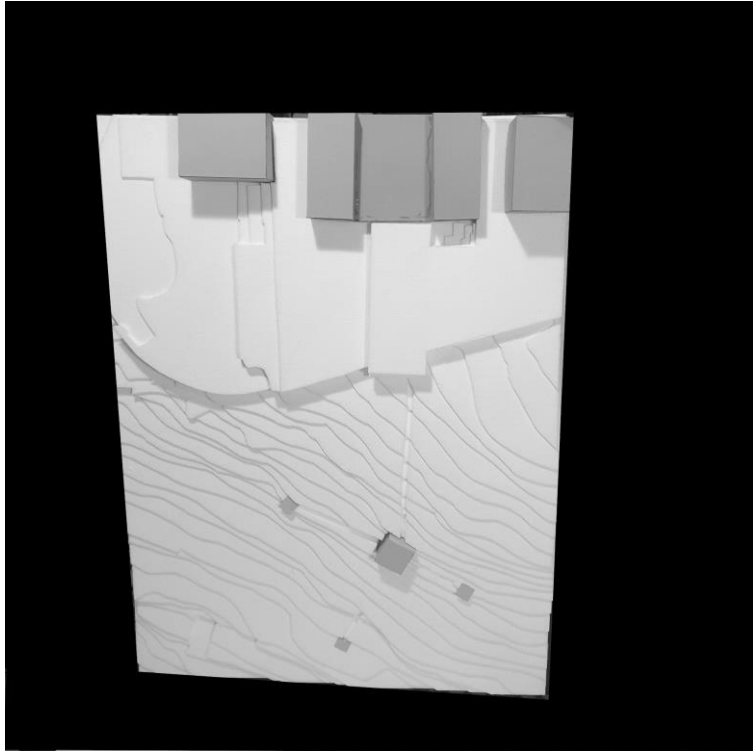


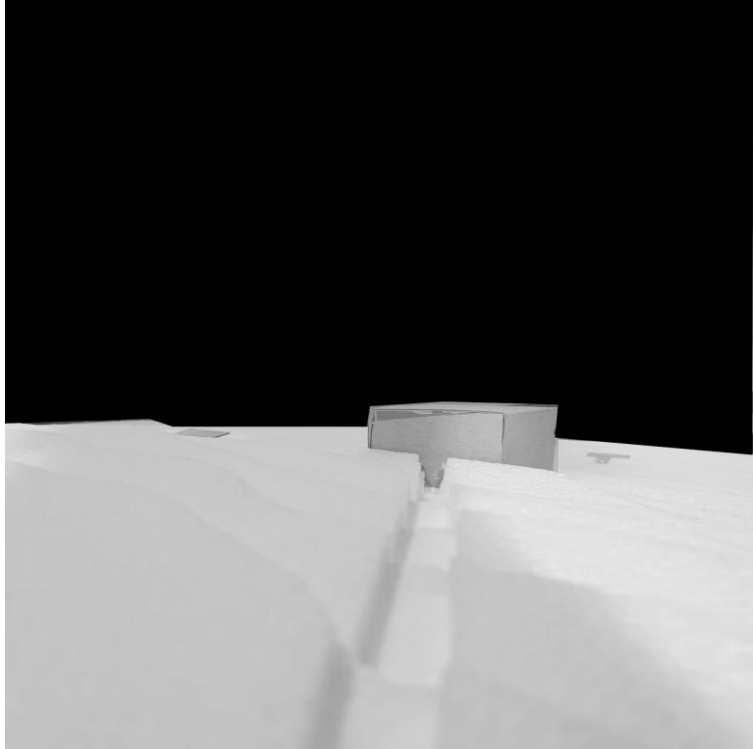


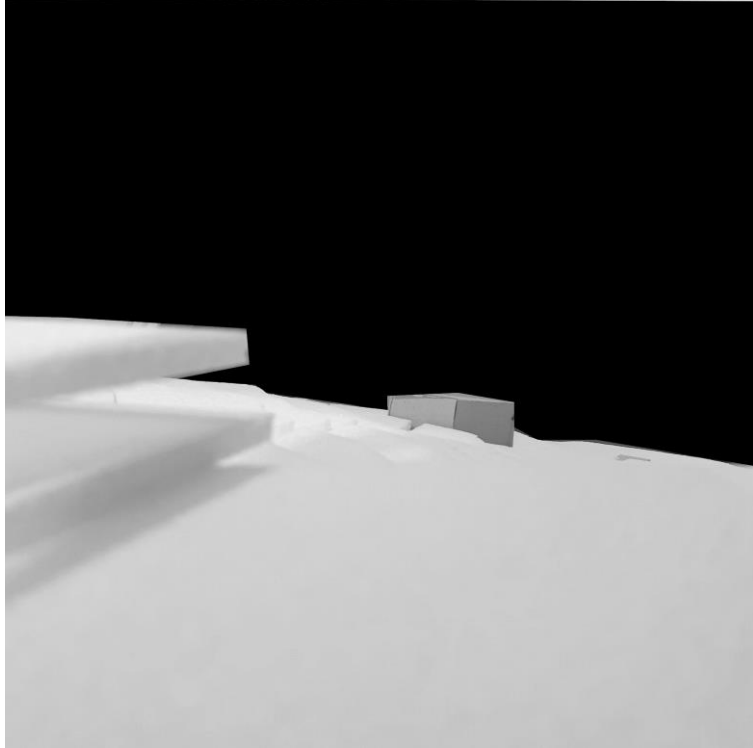
esquiço síntese

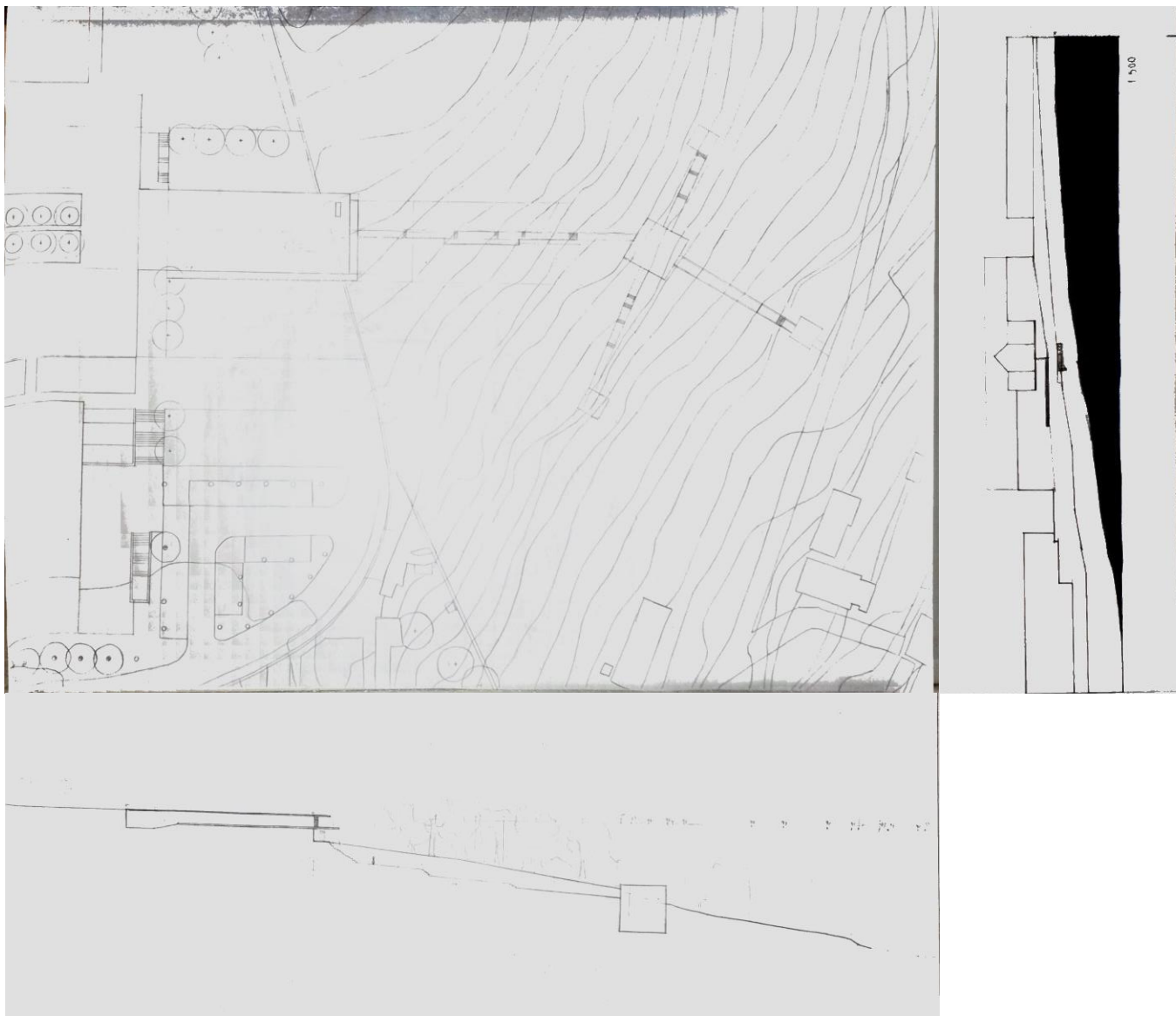










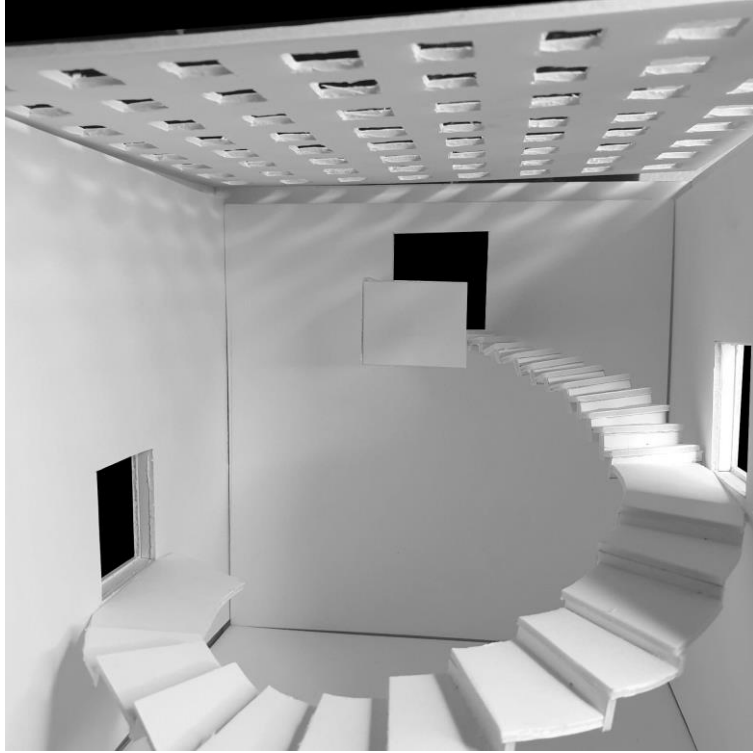


planta e perfil de conjunto



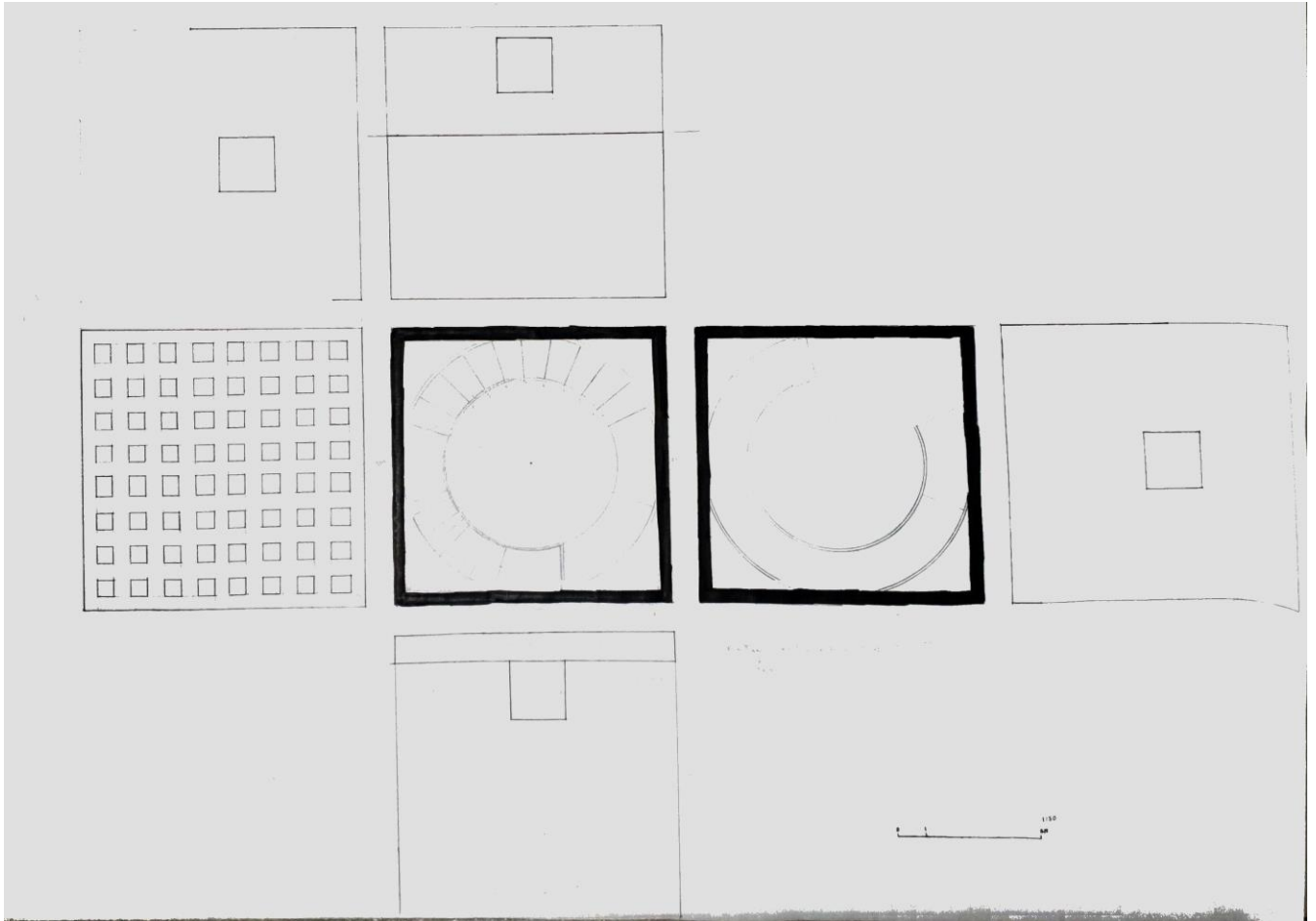
desenho(s) complementares







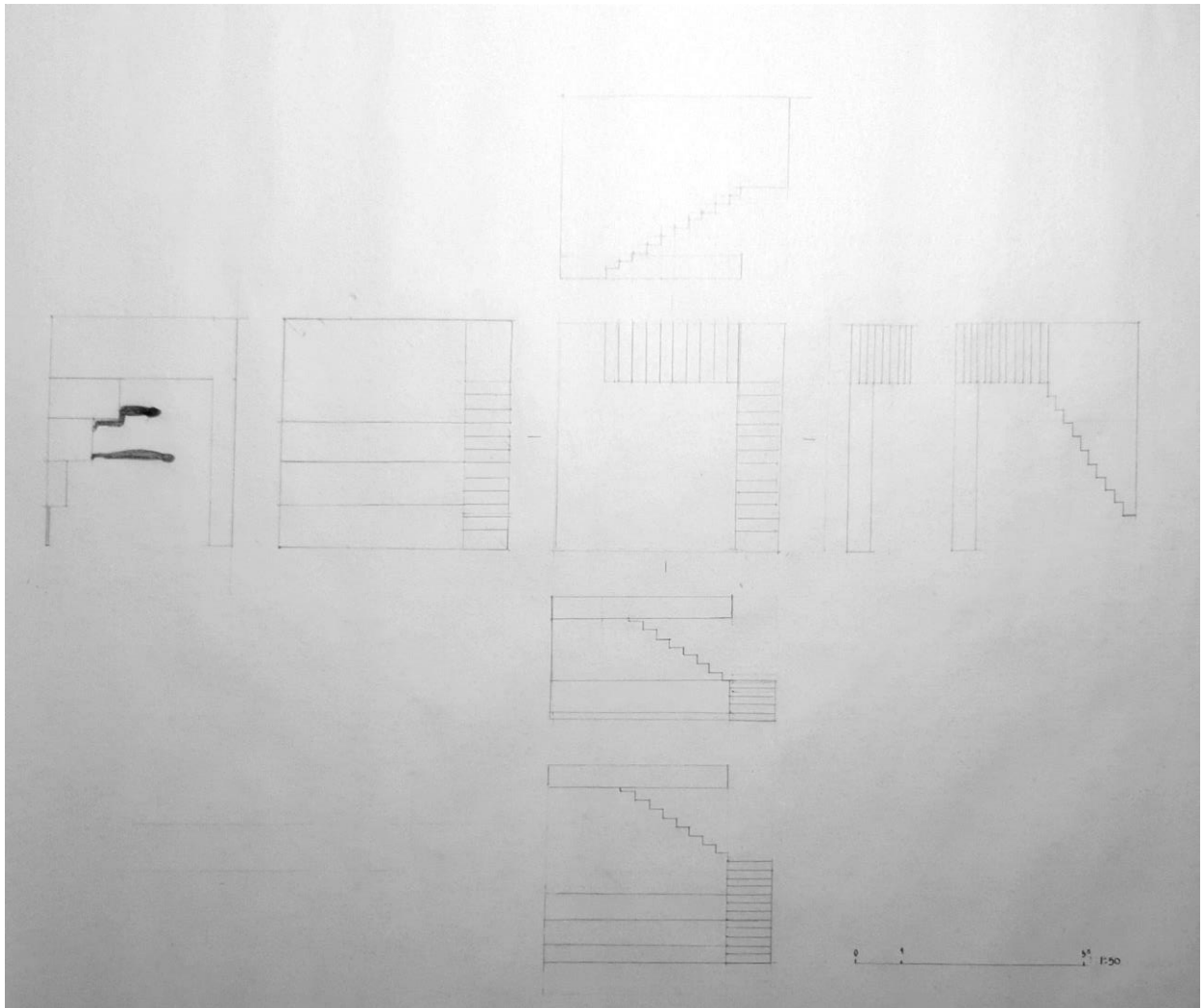




planta e corte



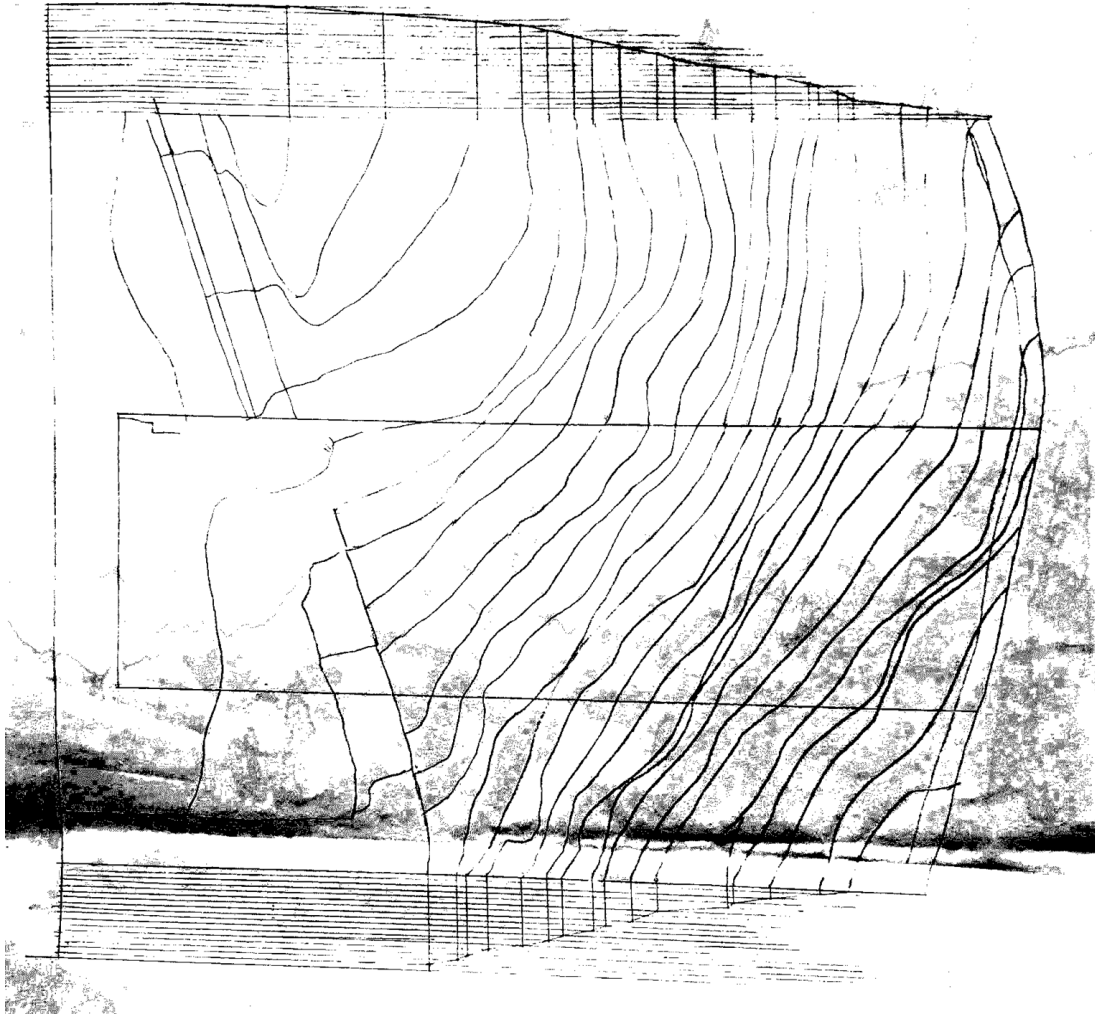
planta e corte



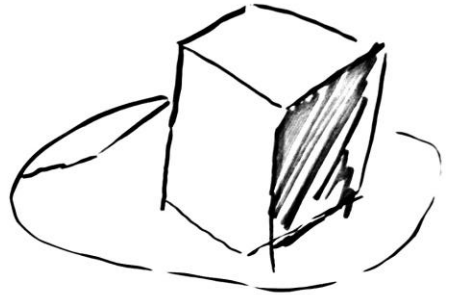
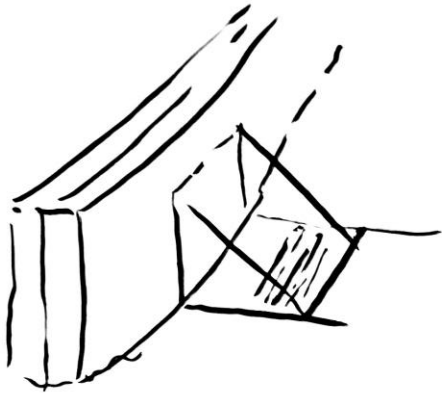
Miiradouro

**Processo**

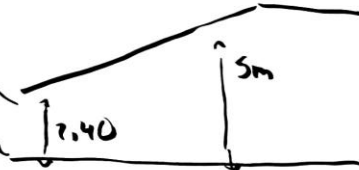
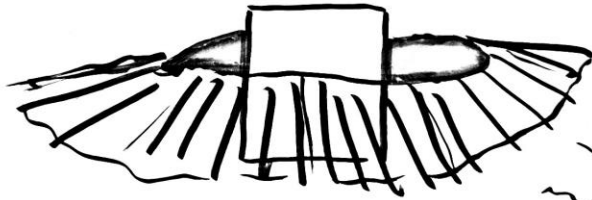


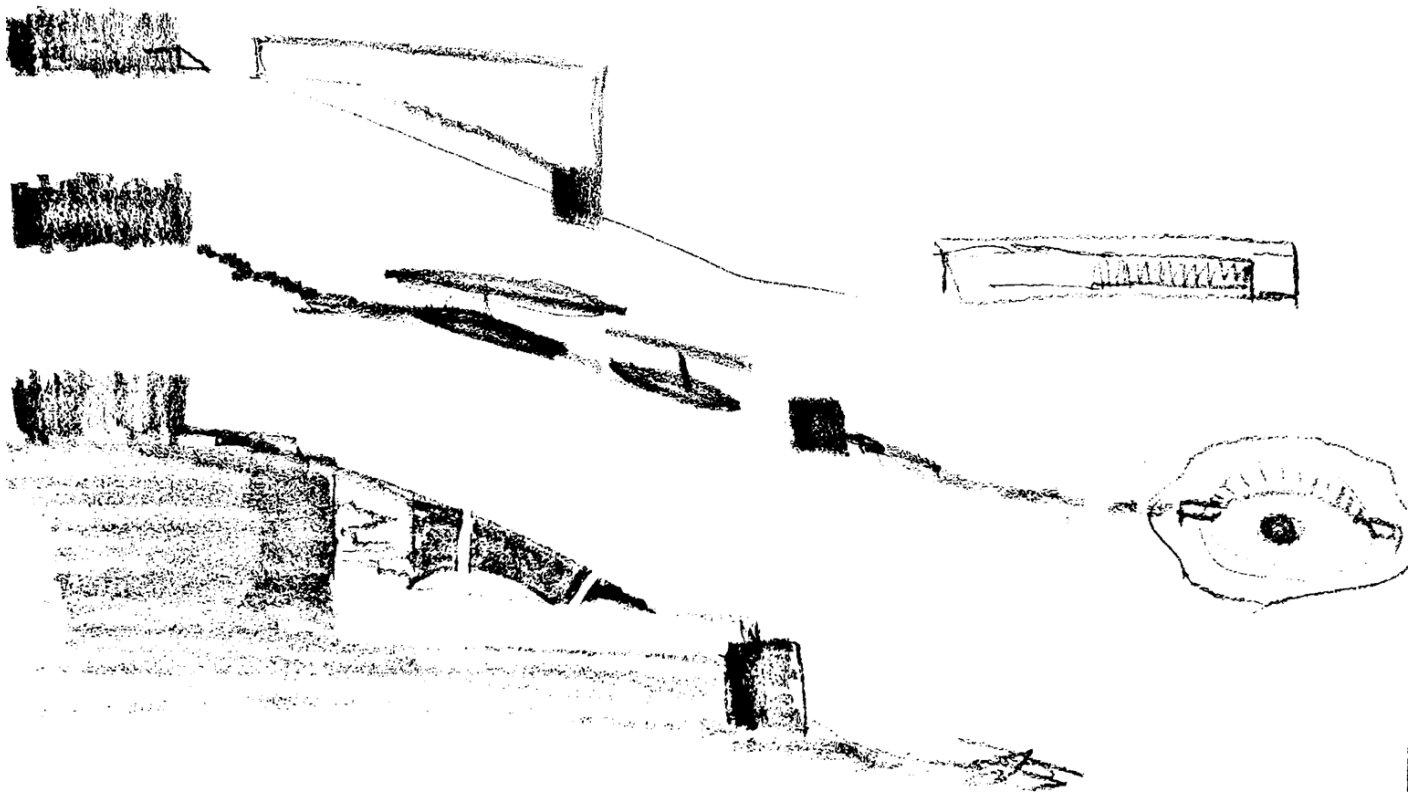


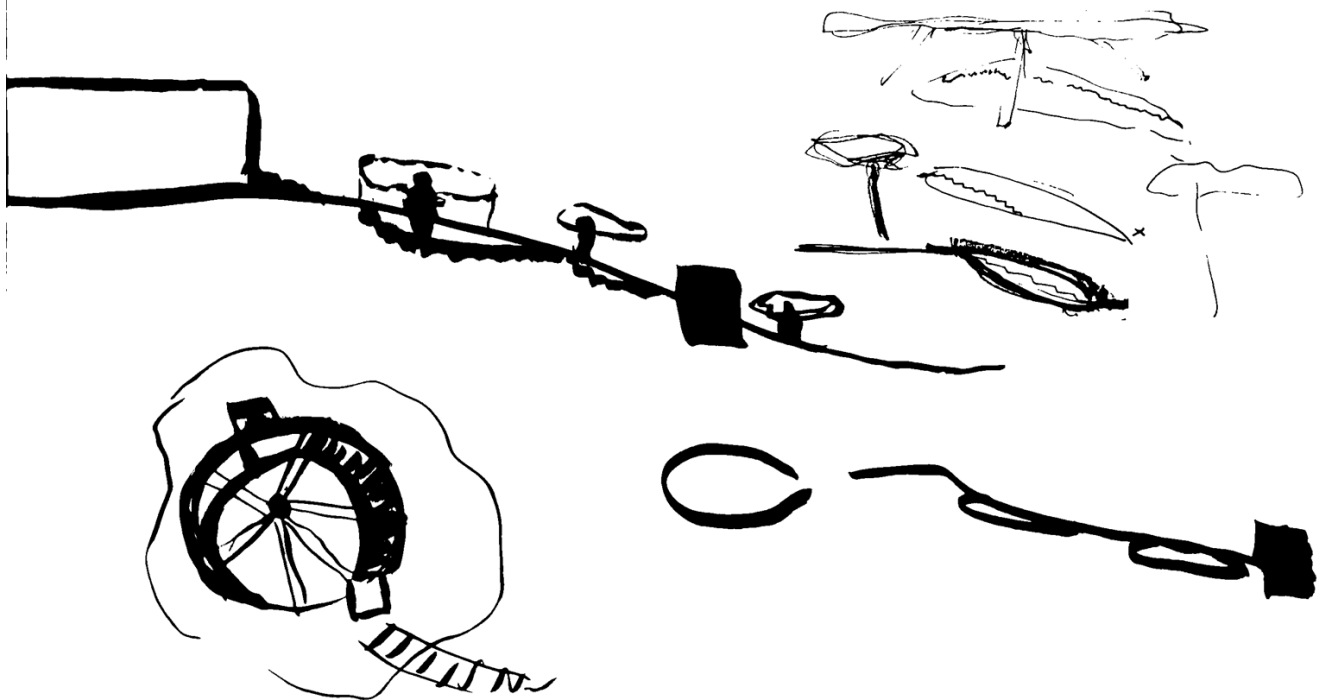
Perfis maquete 1:500



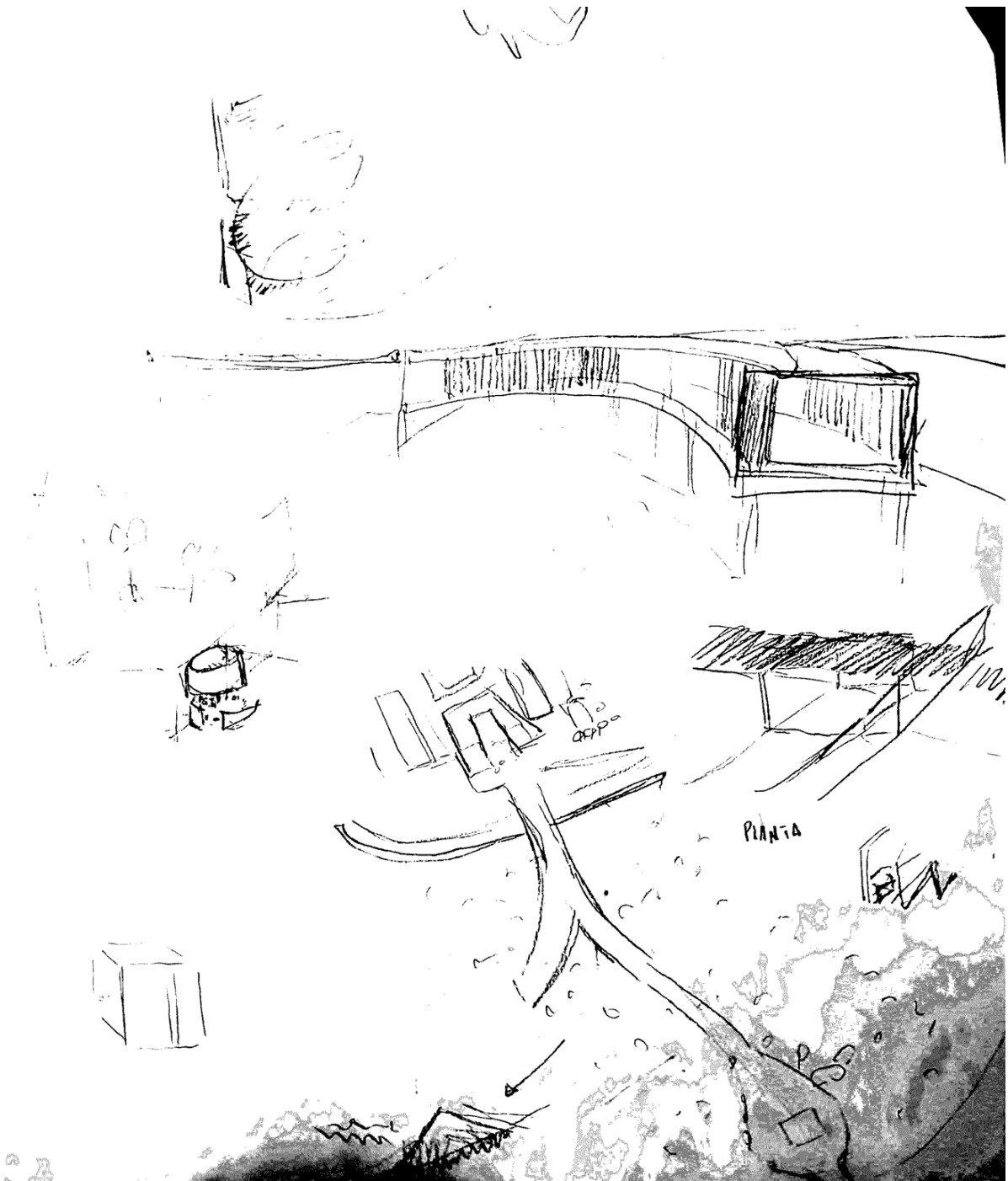
900m











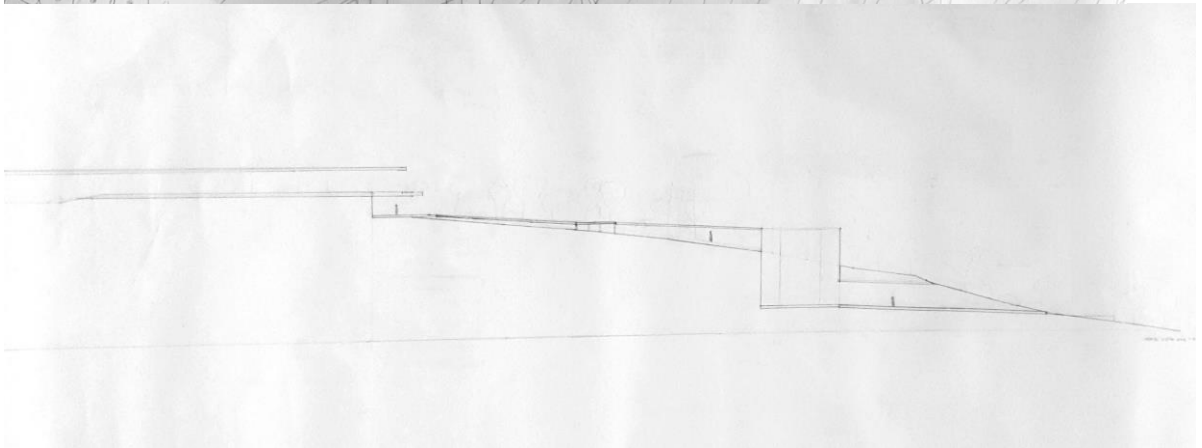






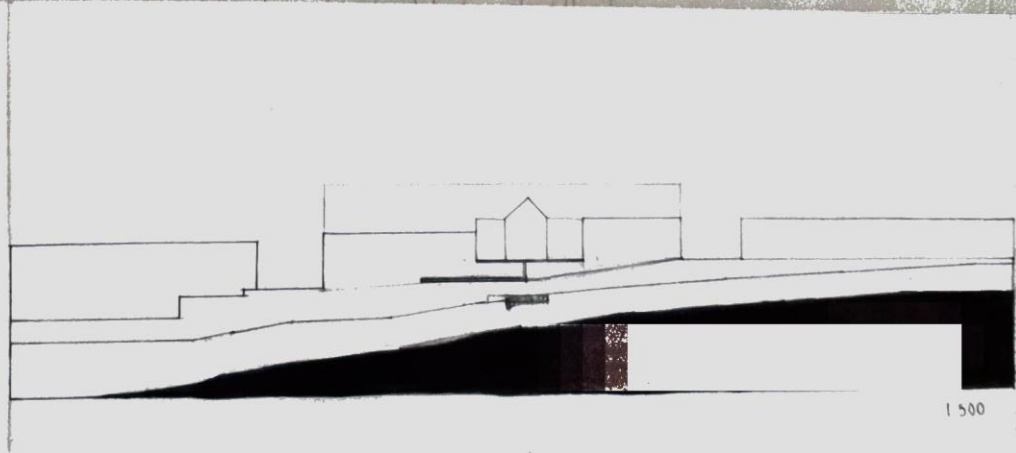












1 500

