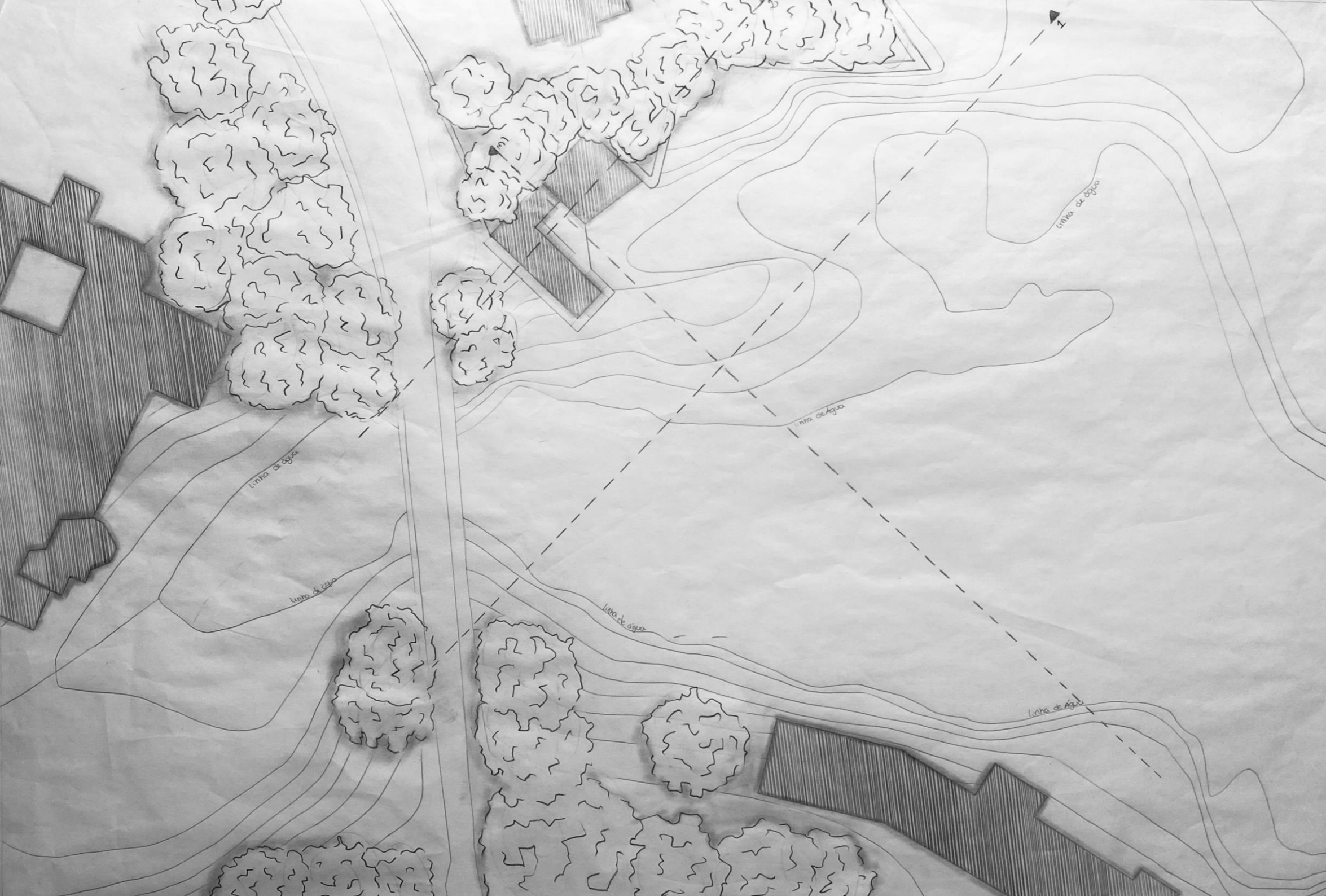
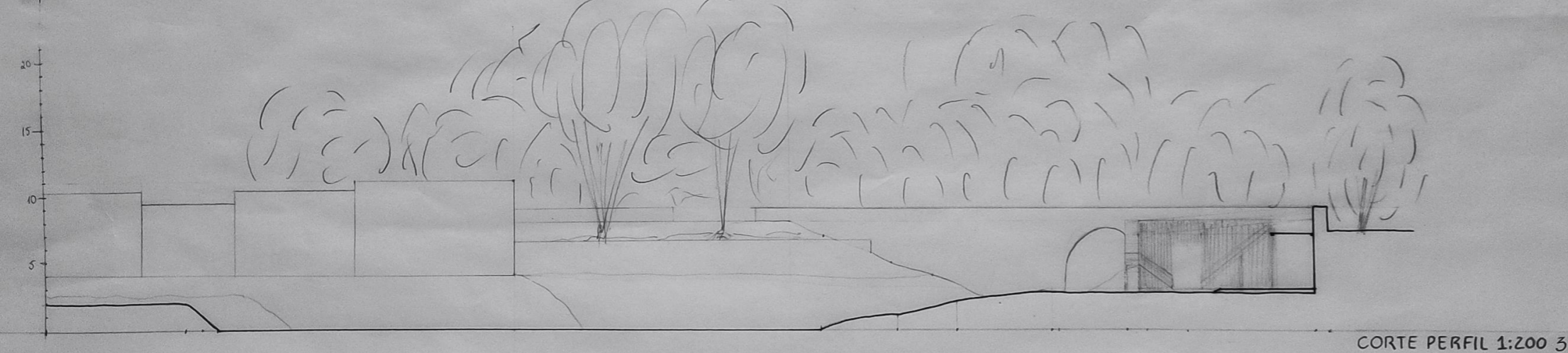
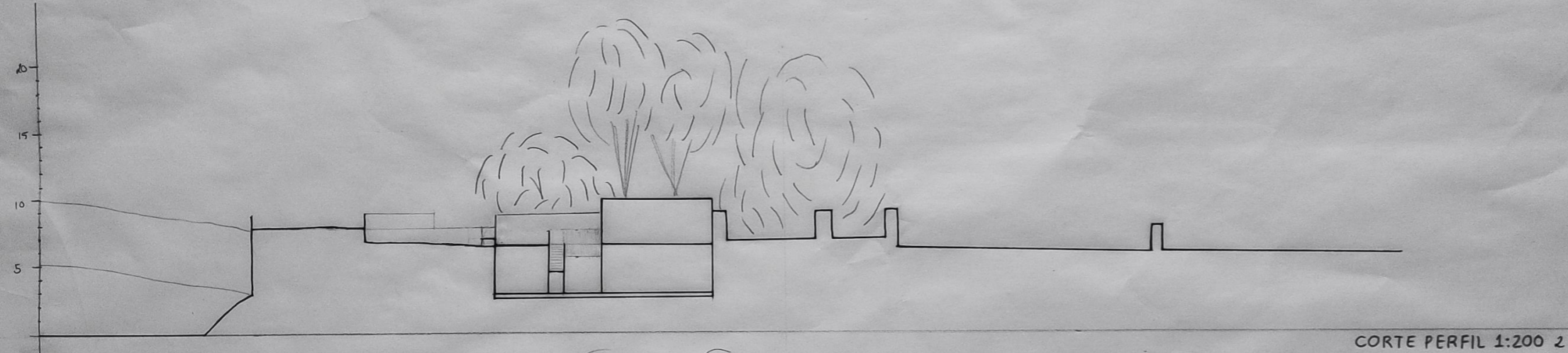
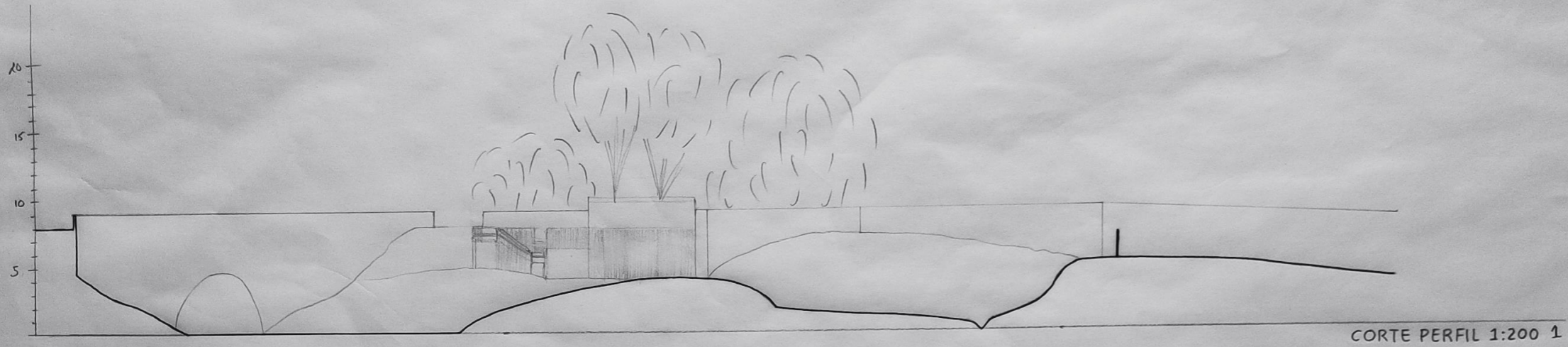


SANTA
MARTA
PADDLE
SURF

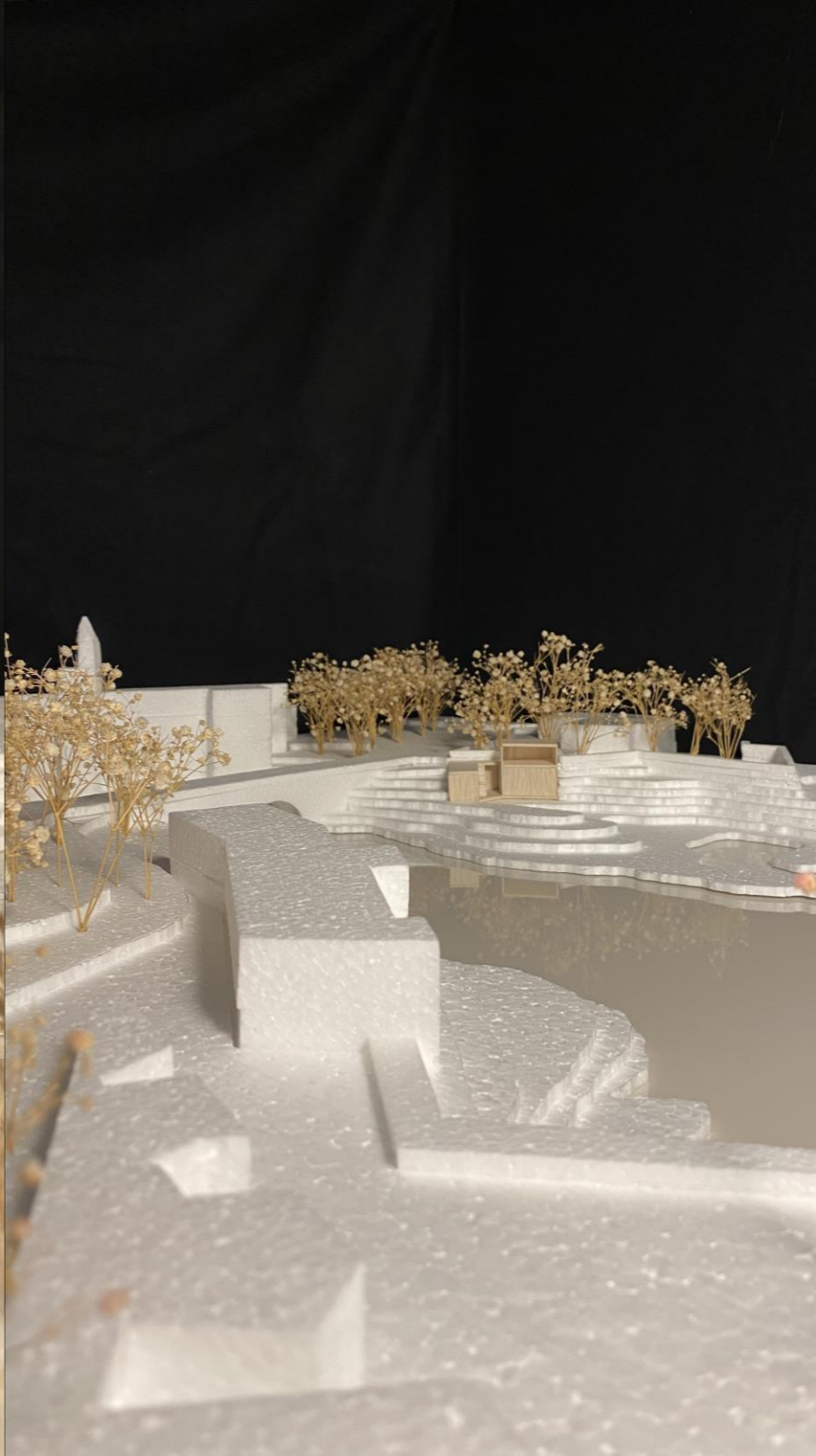
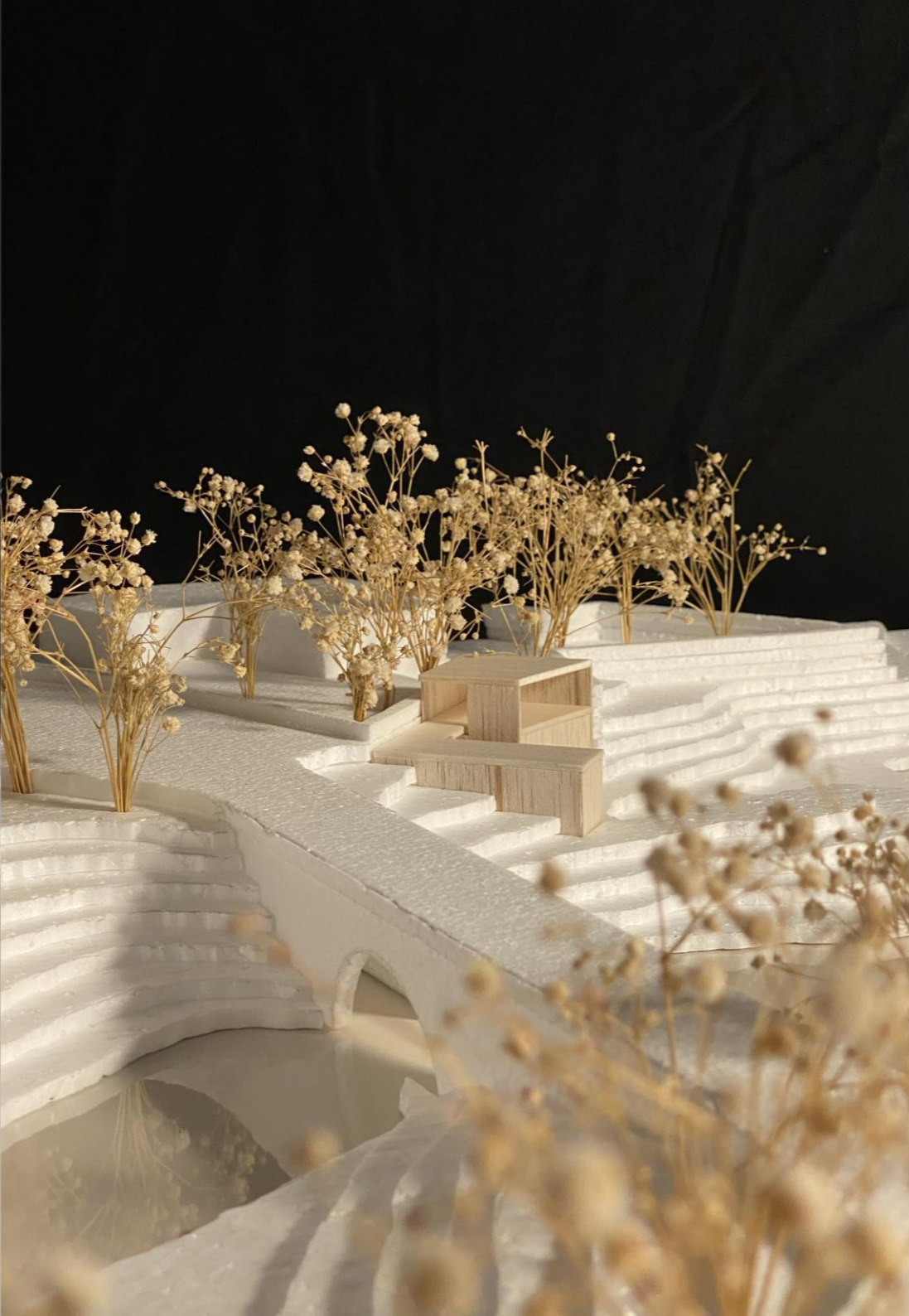
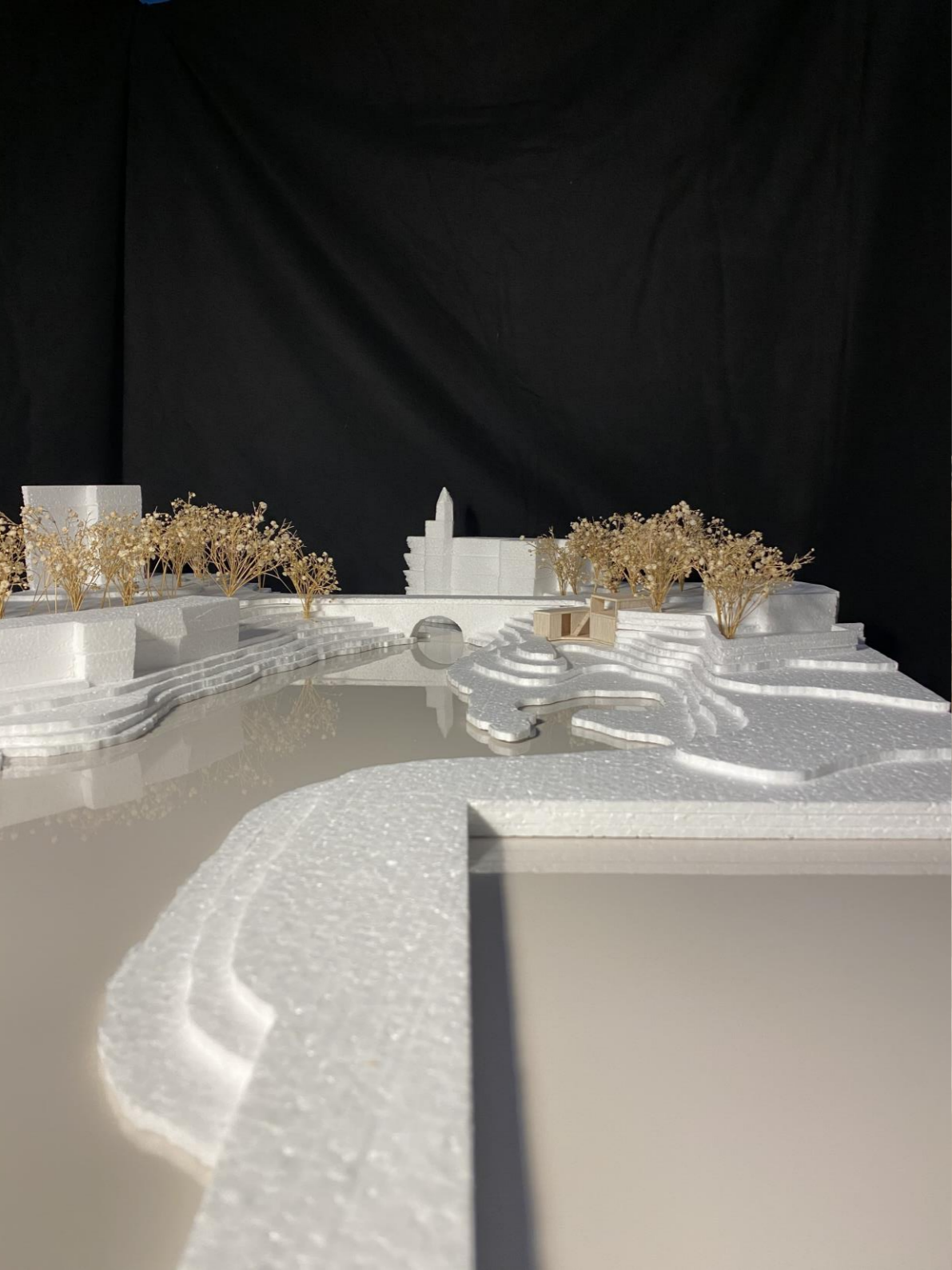


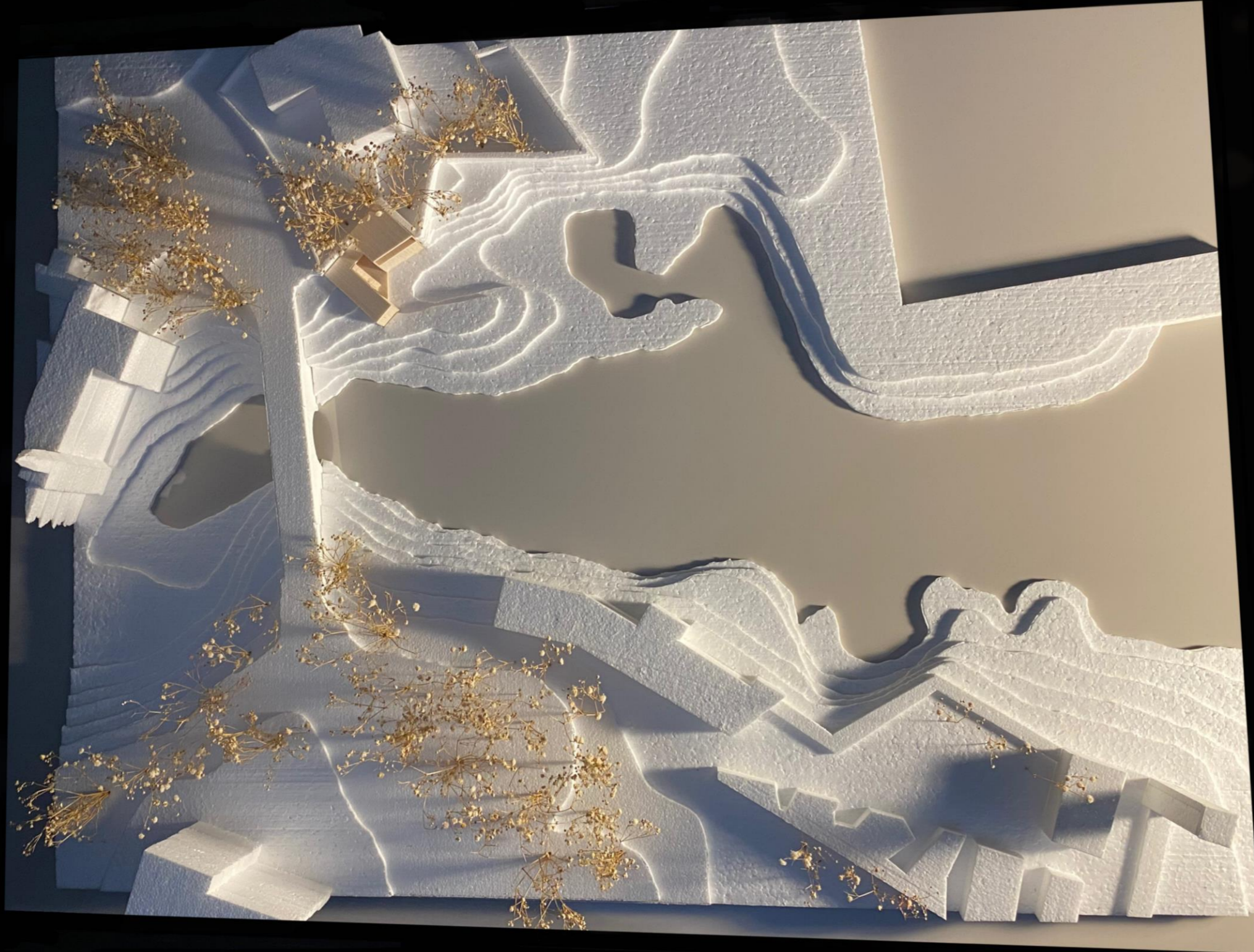




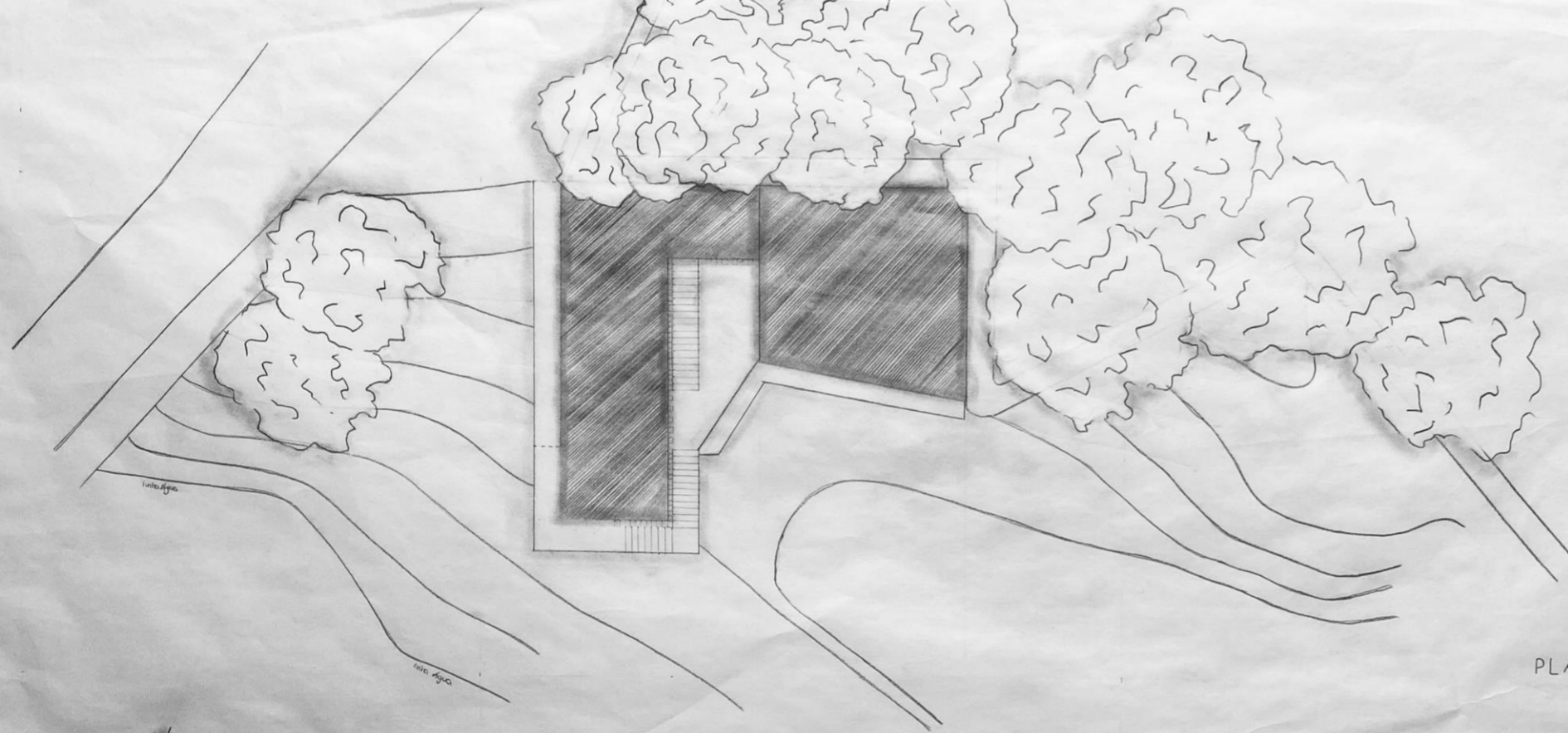
Cortes de Perfil 1:200



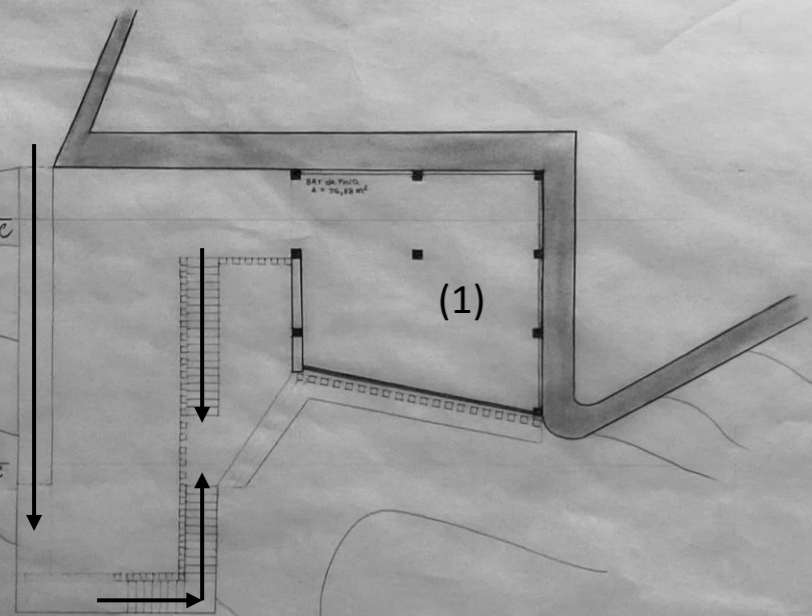




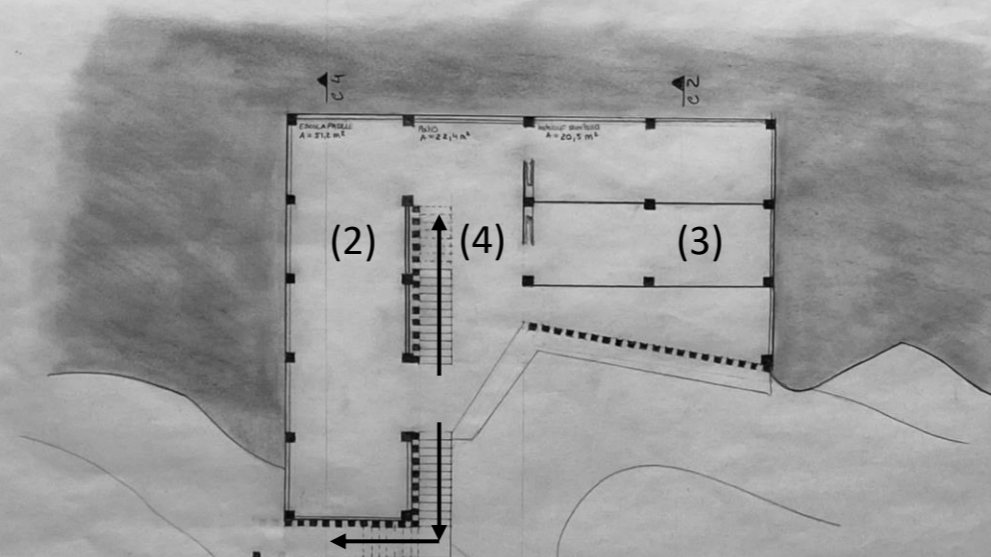




PLANTA 1:100 ①



PLANTA 1:100 ②

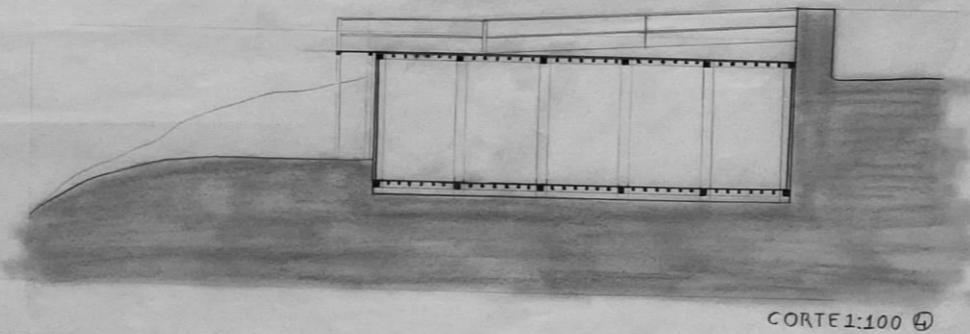
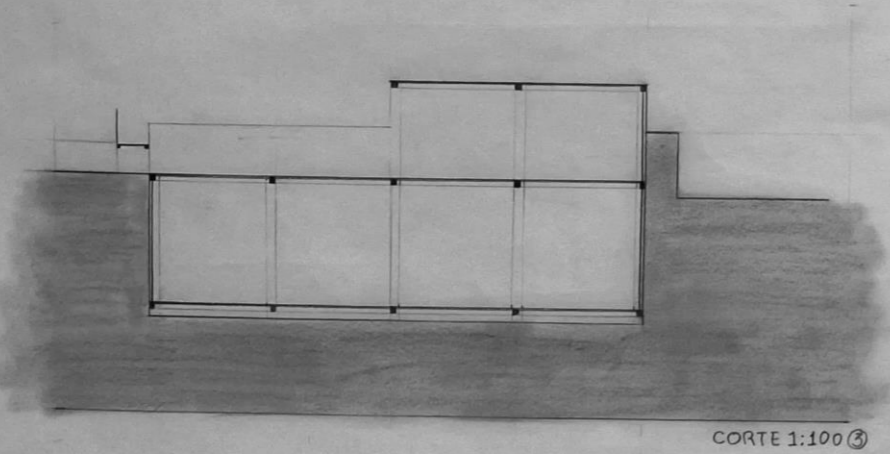
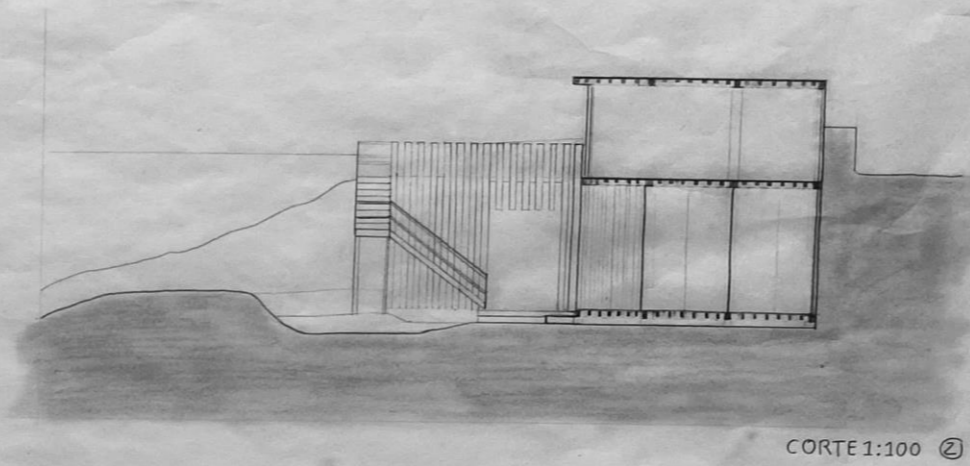
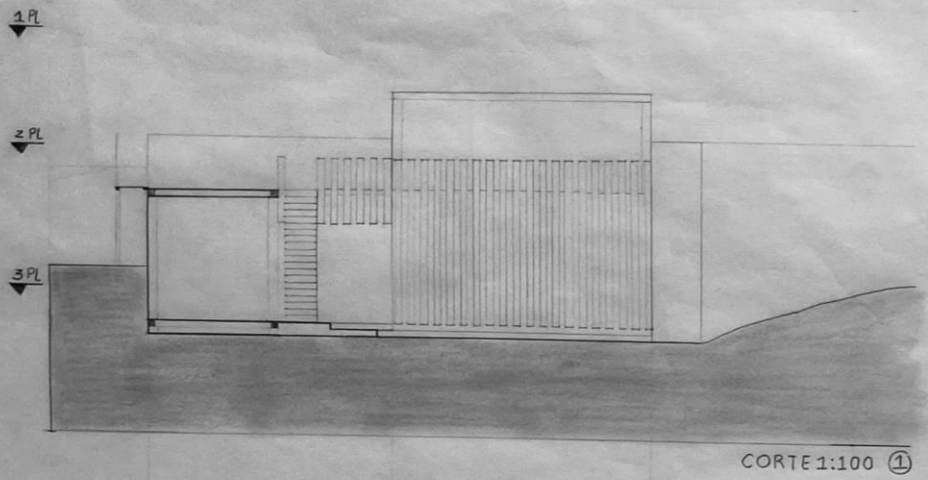


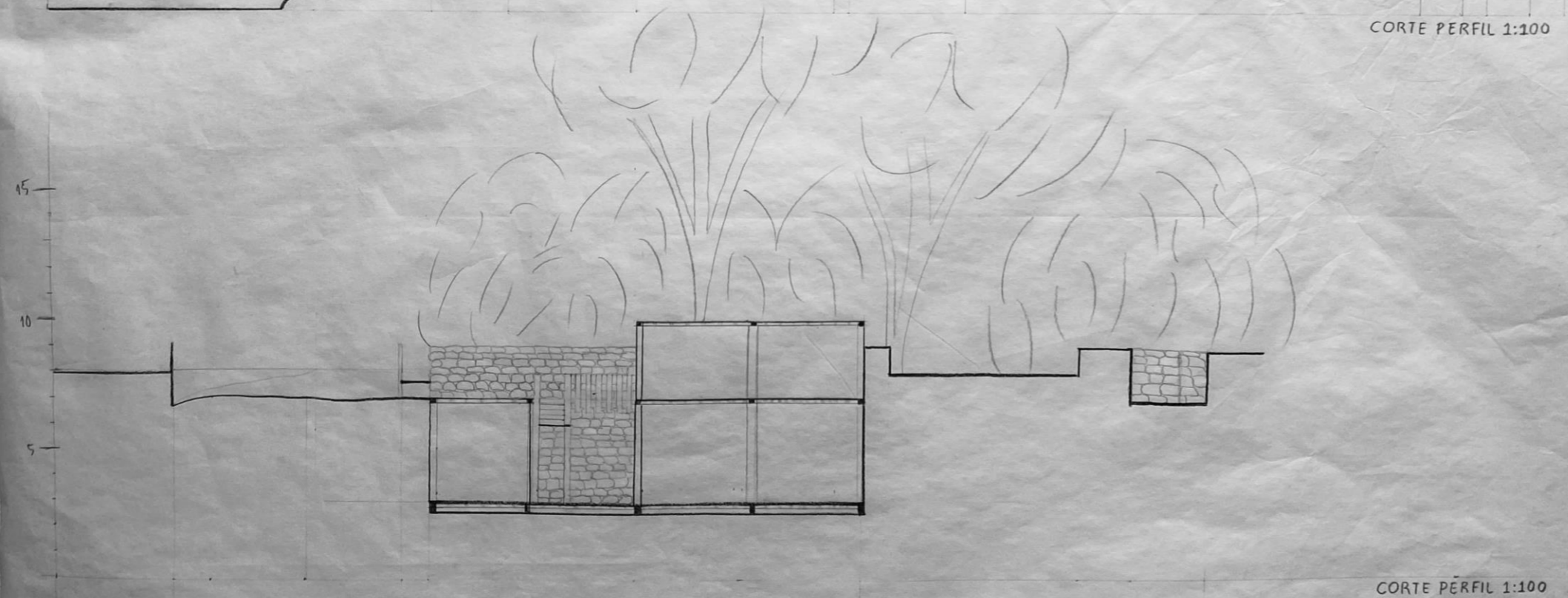
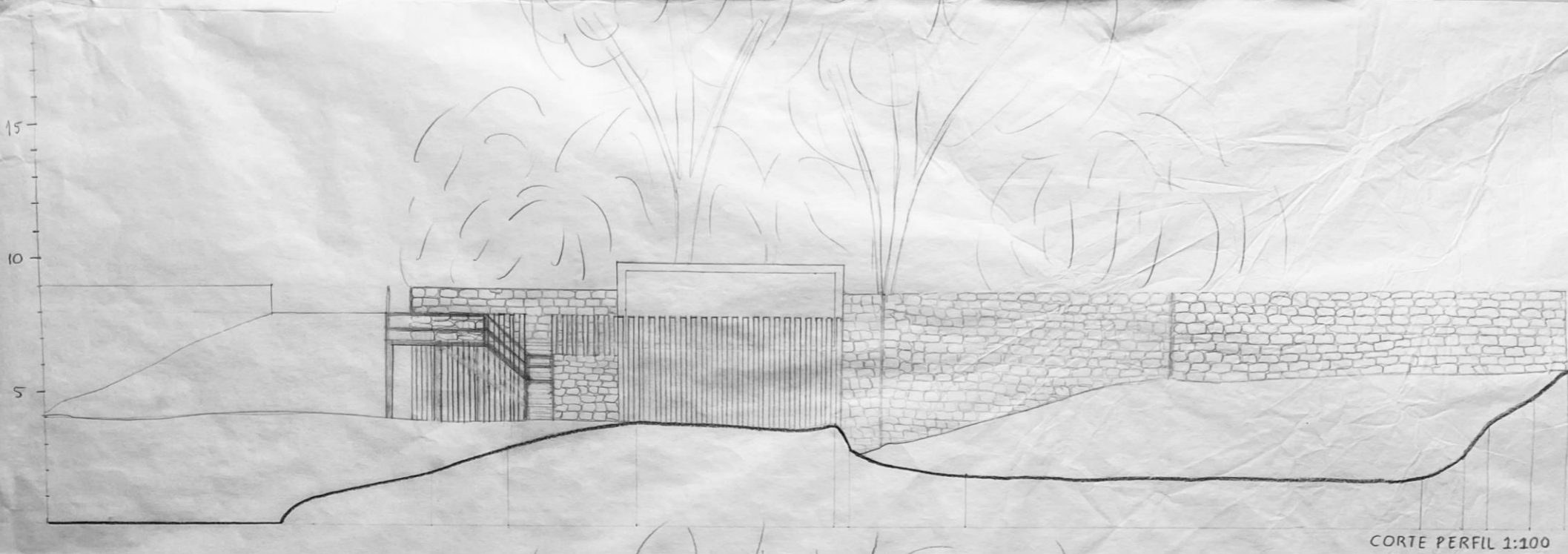
PLANTA 1:100 ③

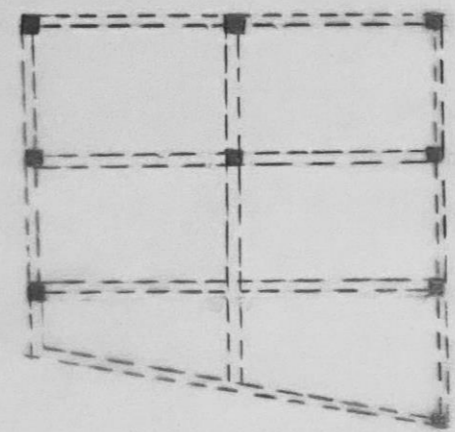
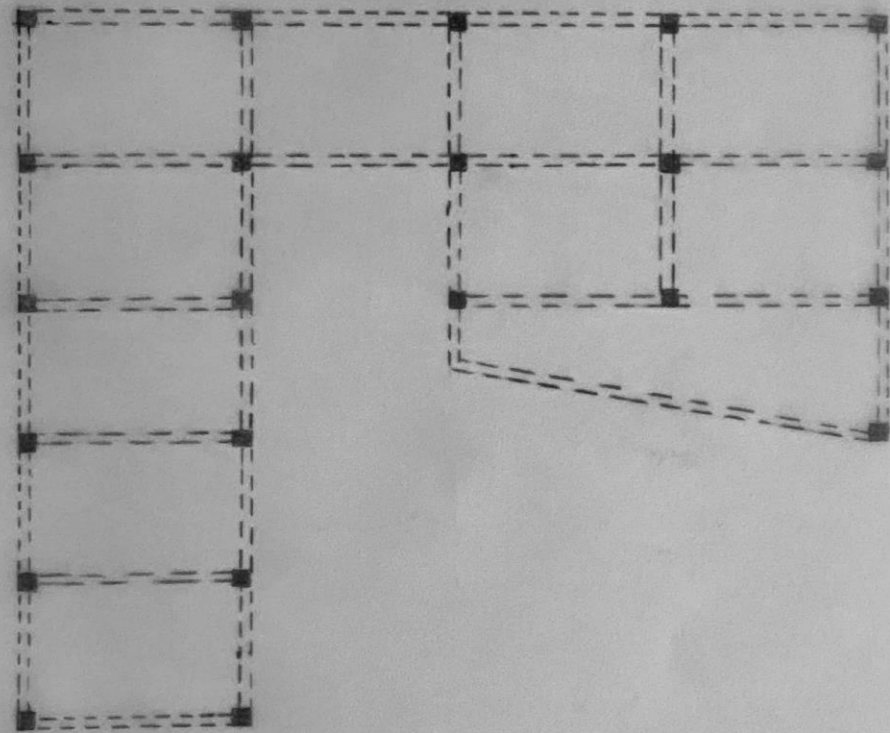
- Áreas:
- (1) Bar da praia: $56,18m^2$
 - (2) Escola de Paddle: $51,20m^2$
 - (3) Instalações Sanitárias: $20,5m^2$
 - (4) Pátio : $22,4m^2$

Plantas Edifício 1:100

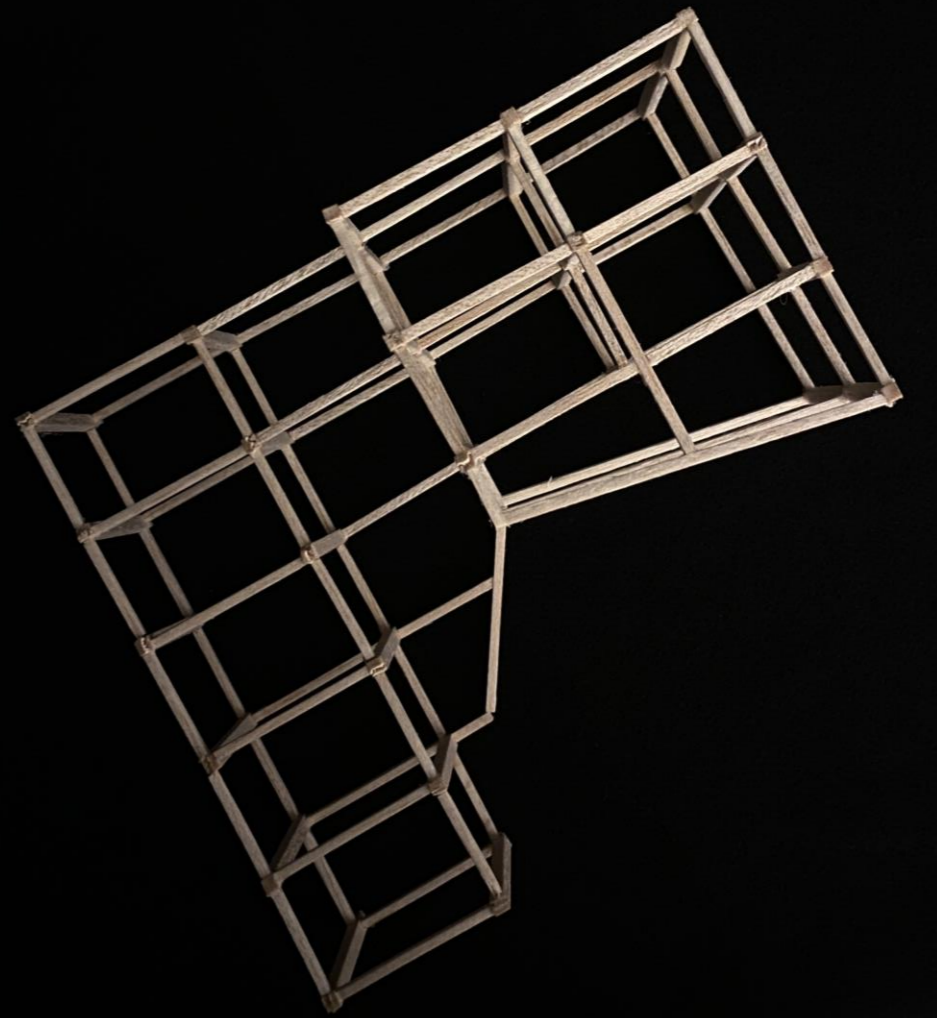
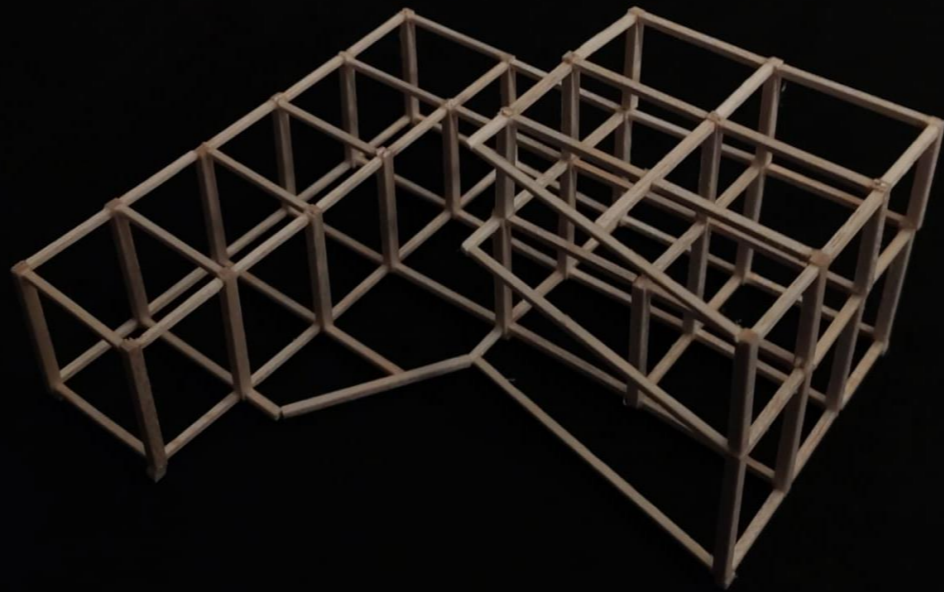




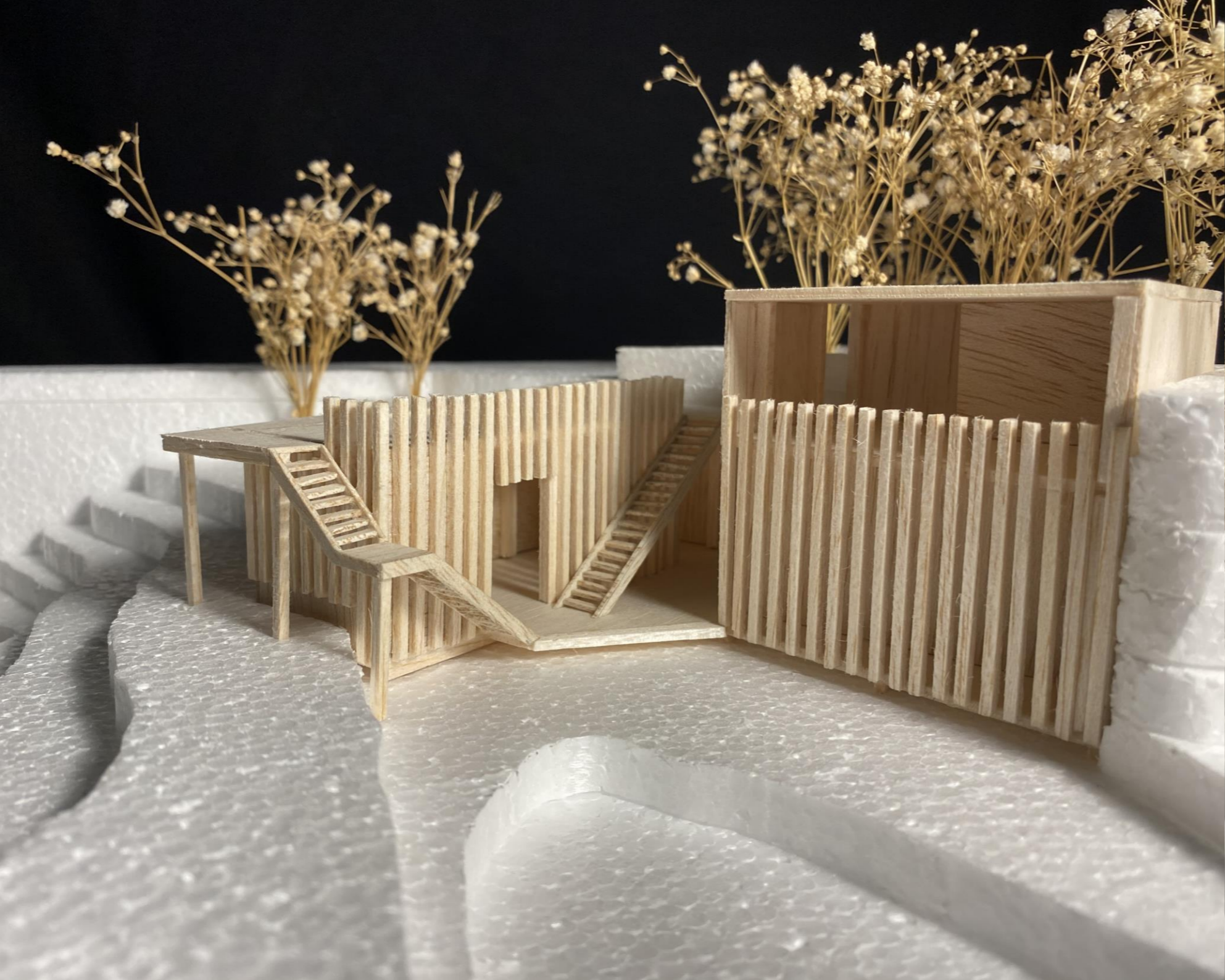


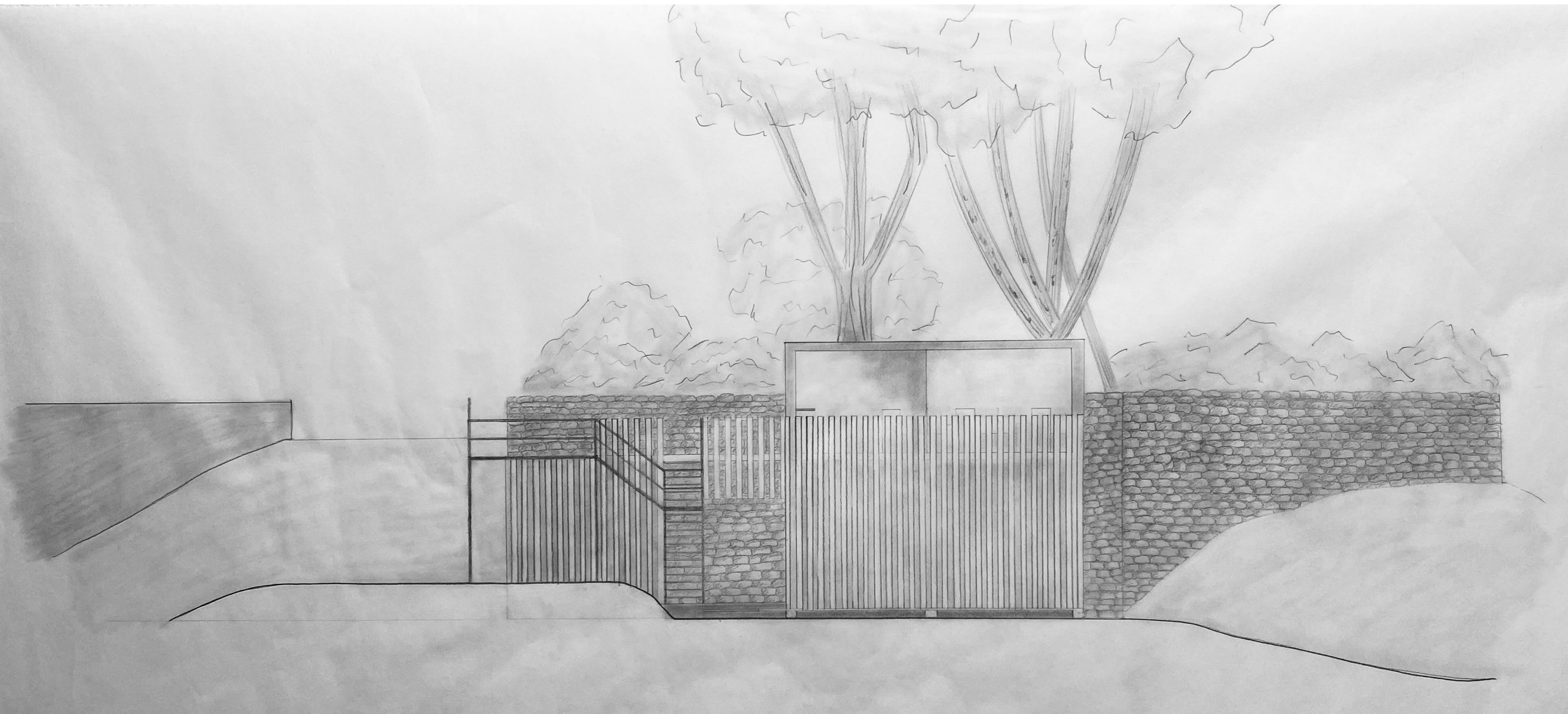


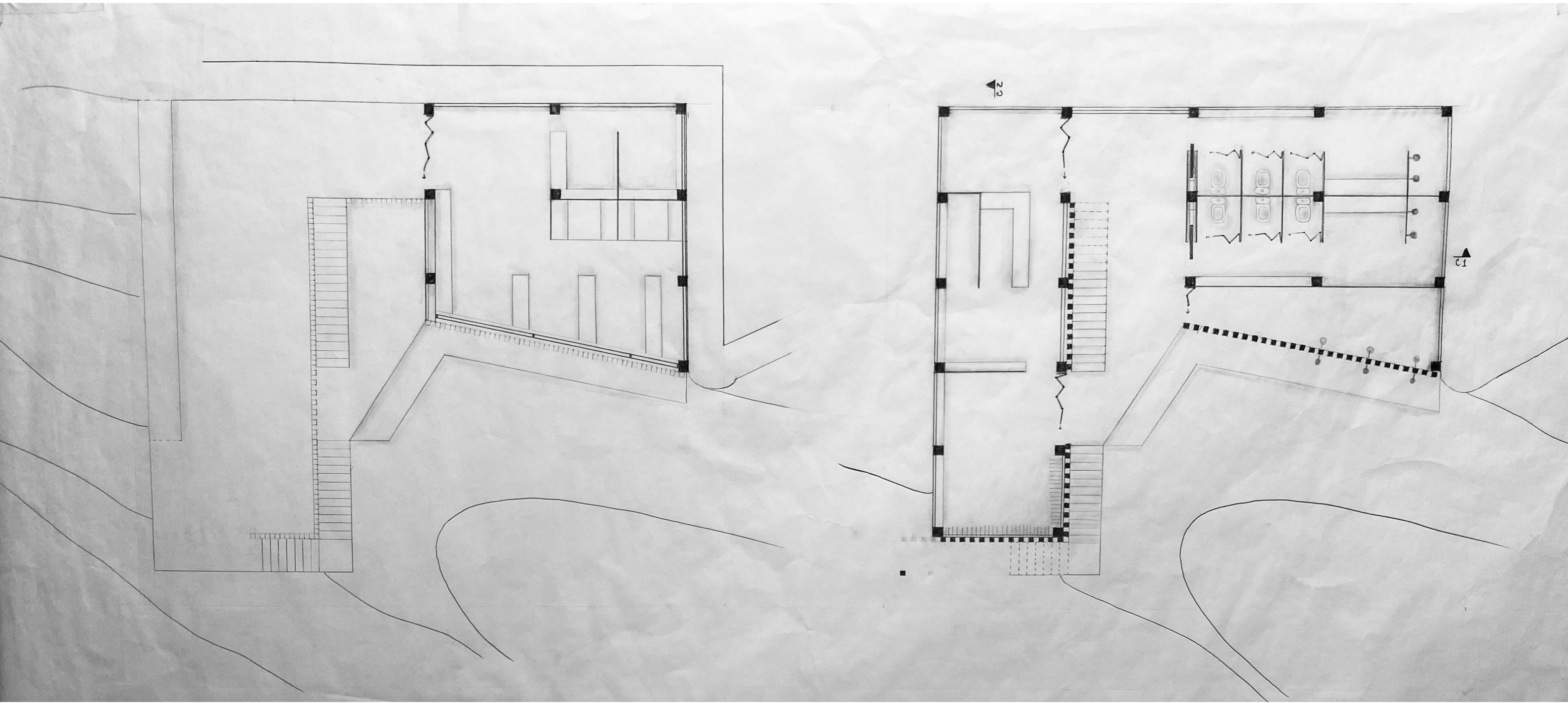
LEGENDA:
--- VIGAS
■ - PILARES

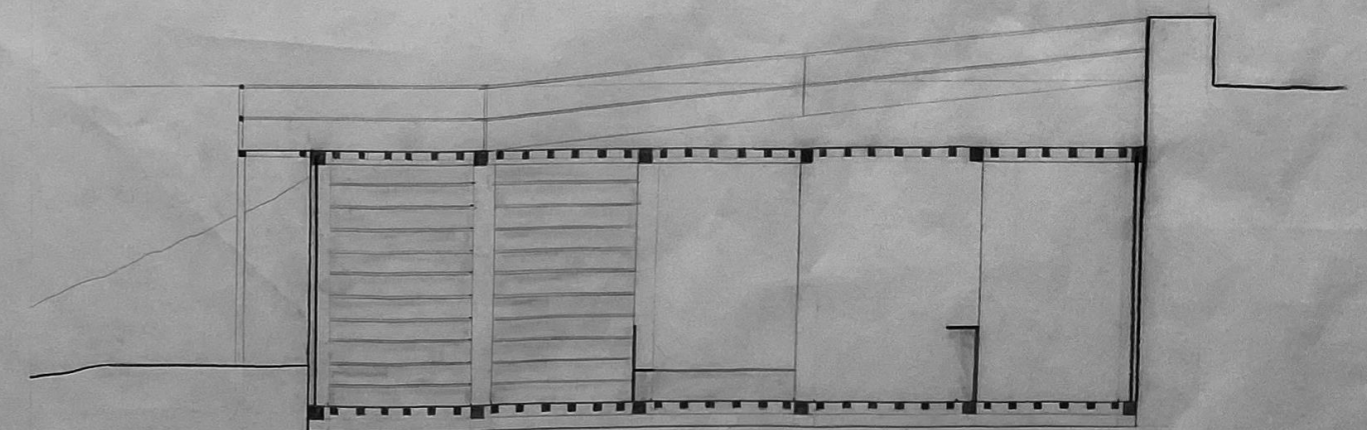
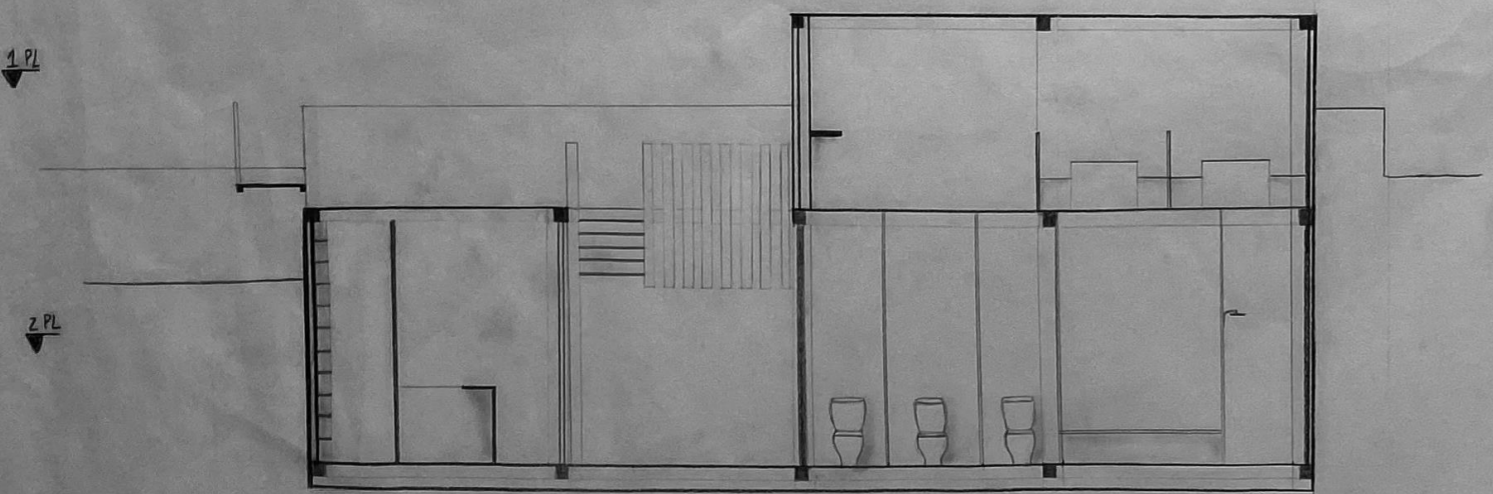




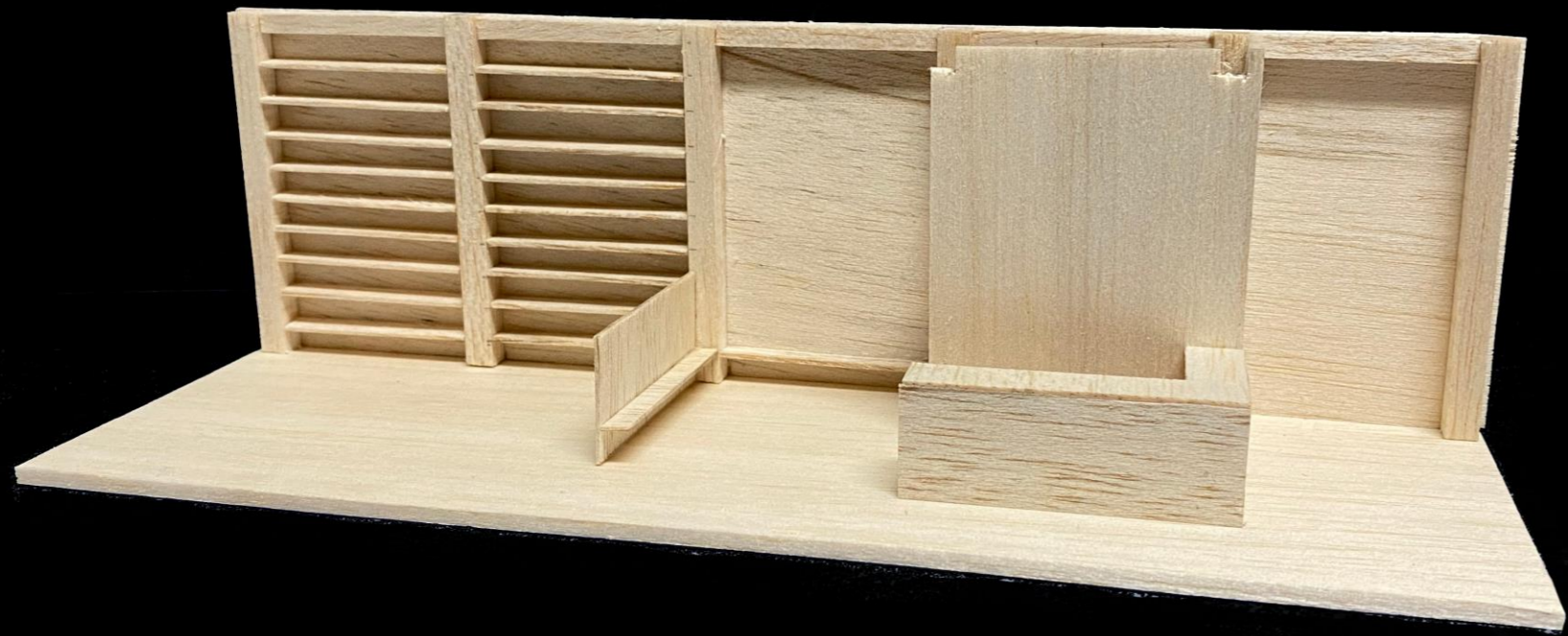


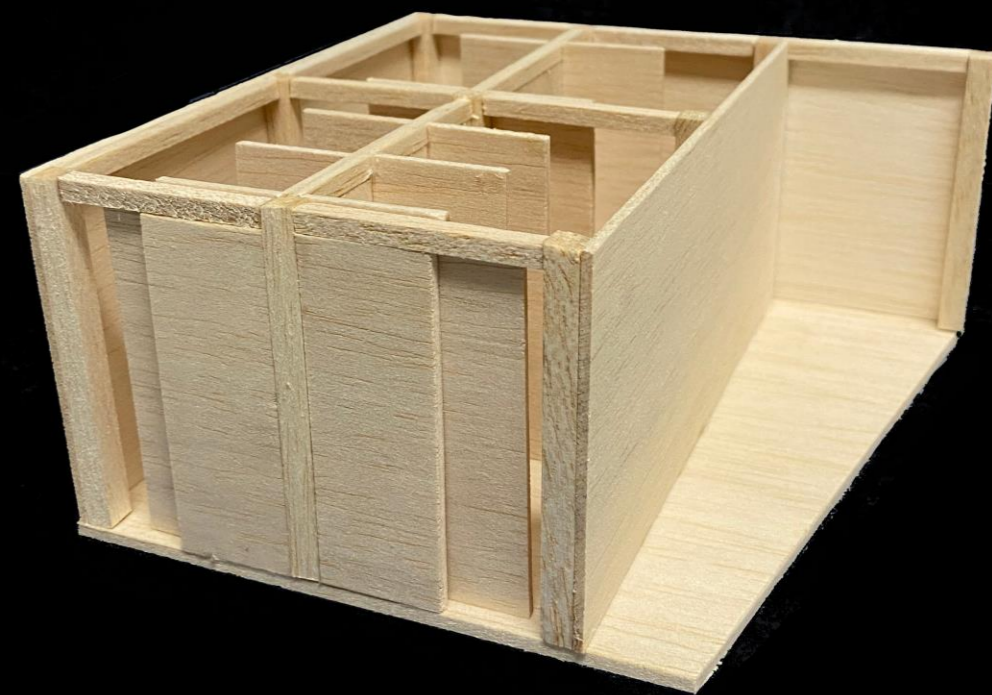


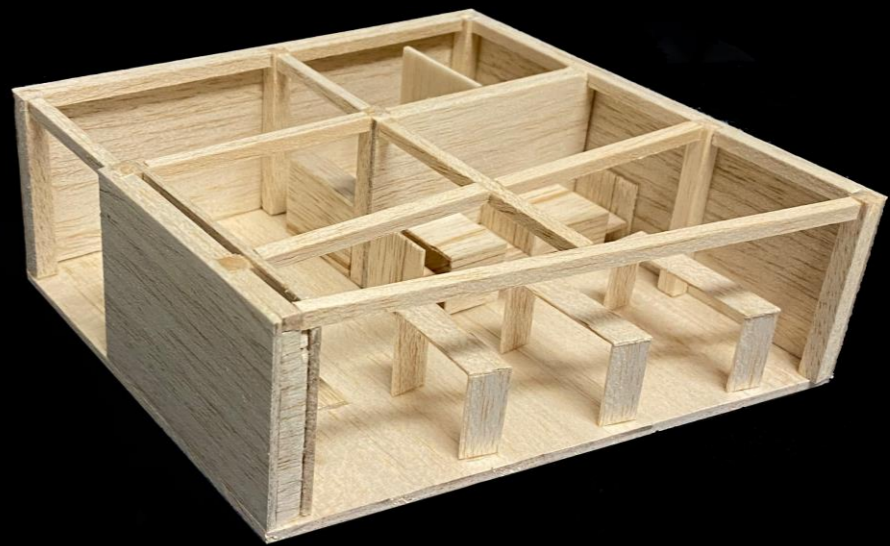




Cortes Edifício 1:50

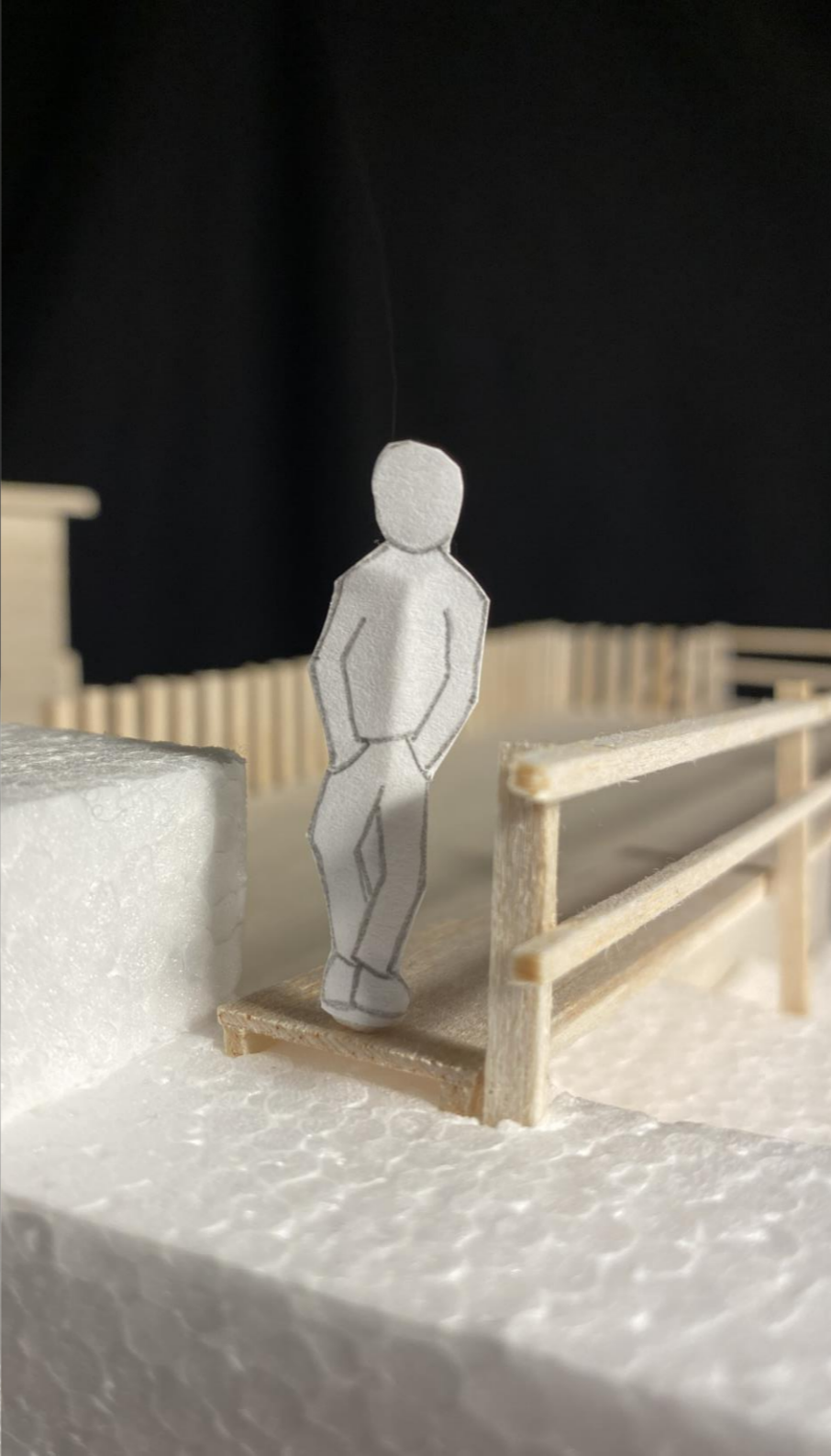




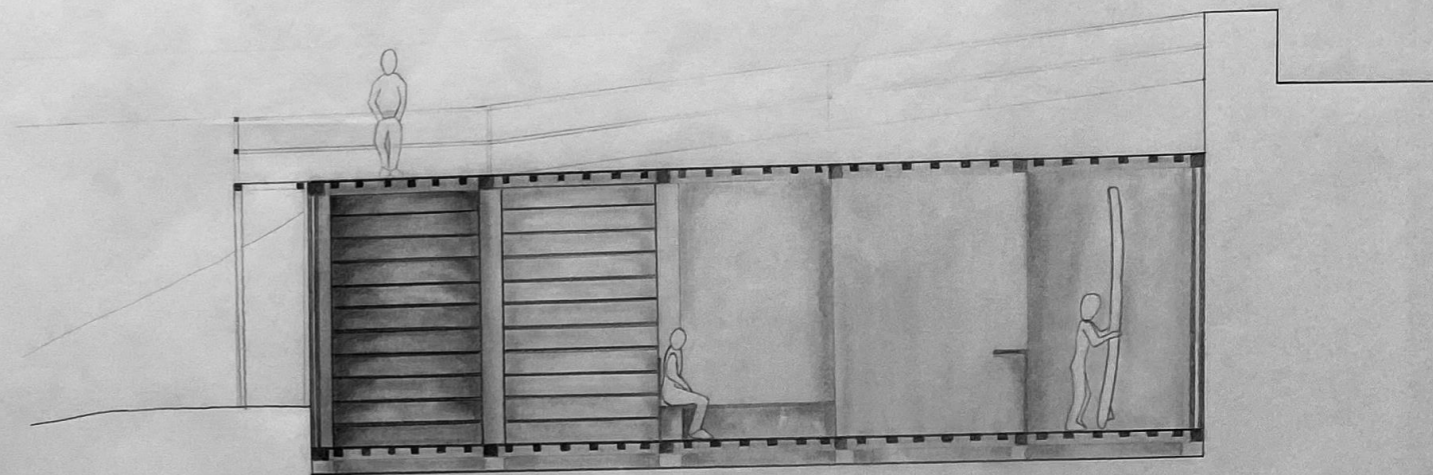
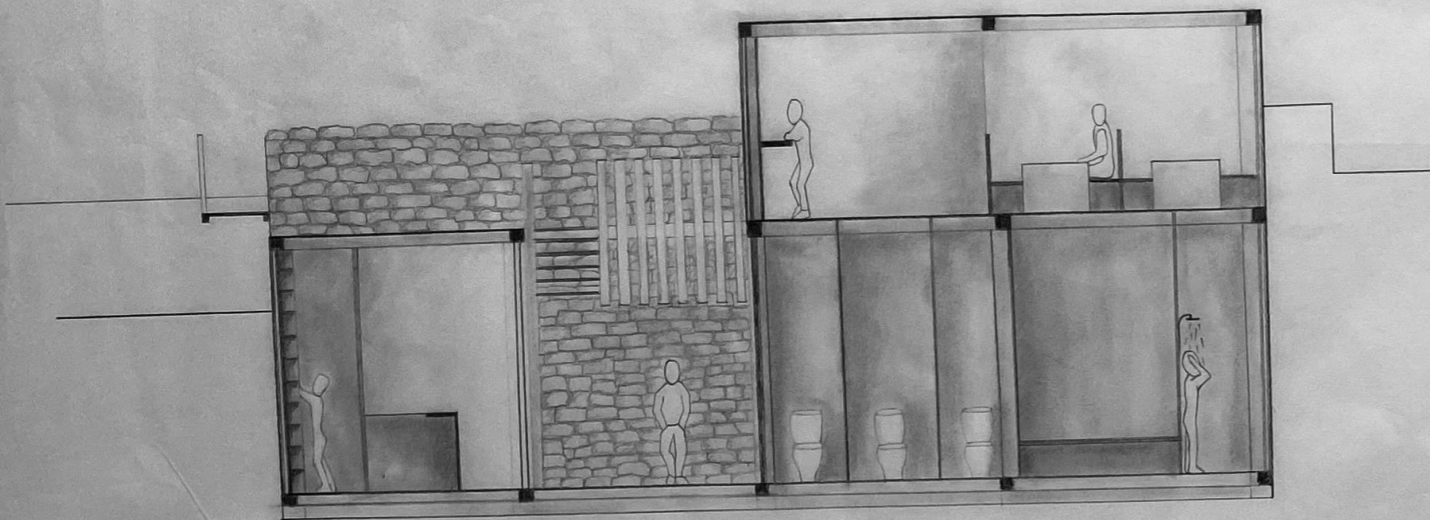












Cortes Atmosférico Edifício 1:50

