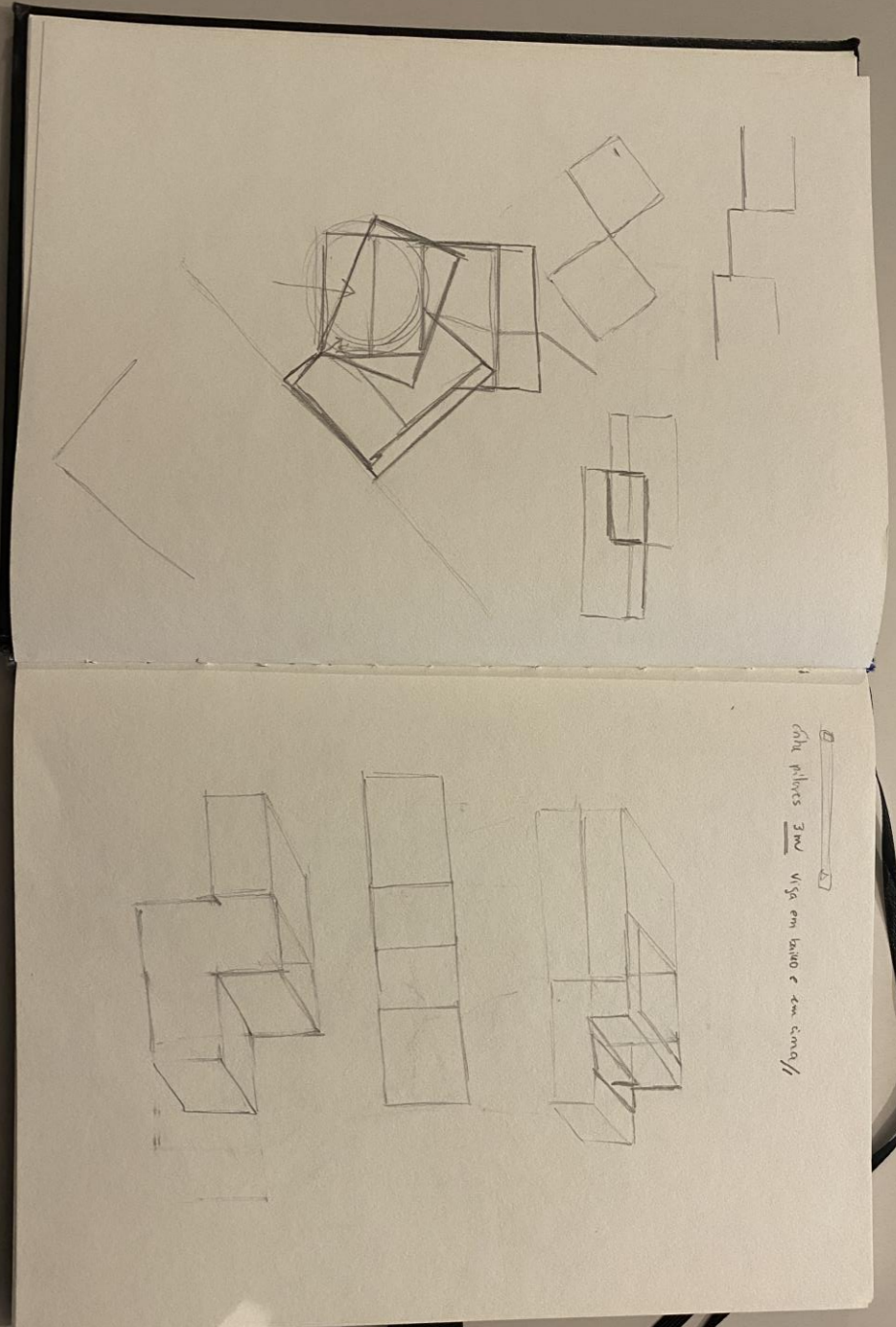
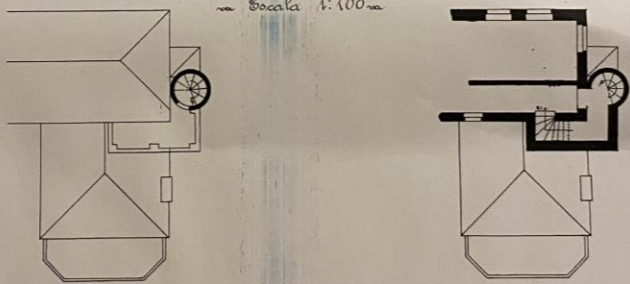
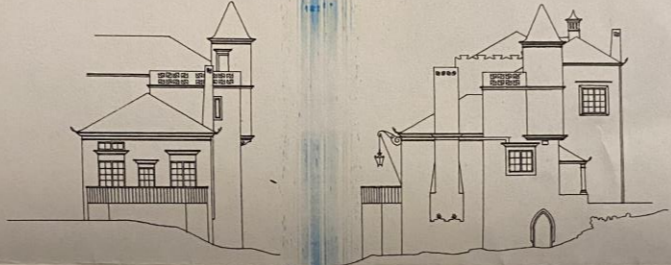
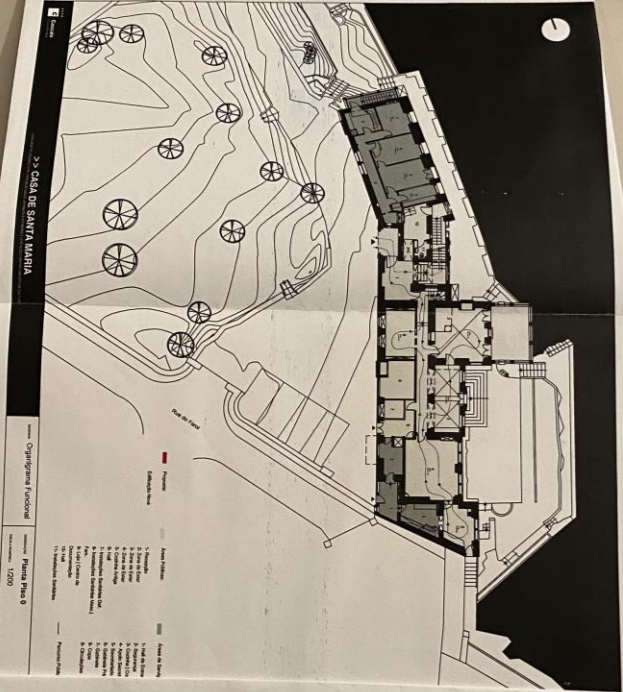
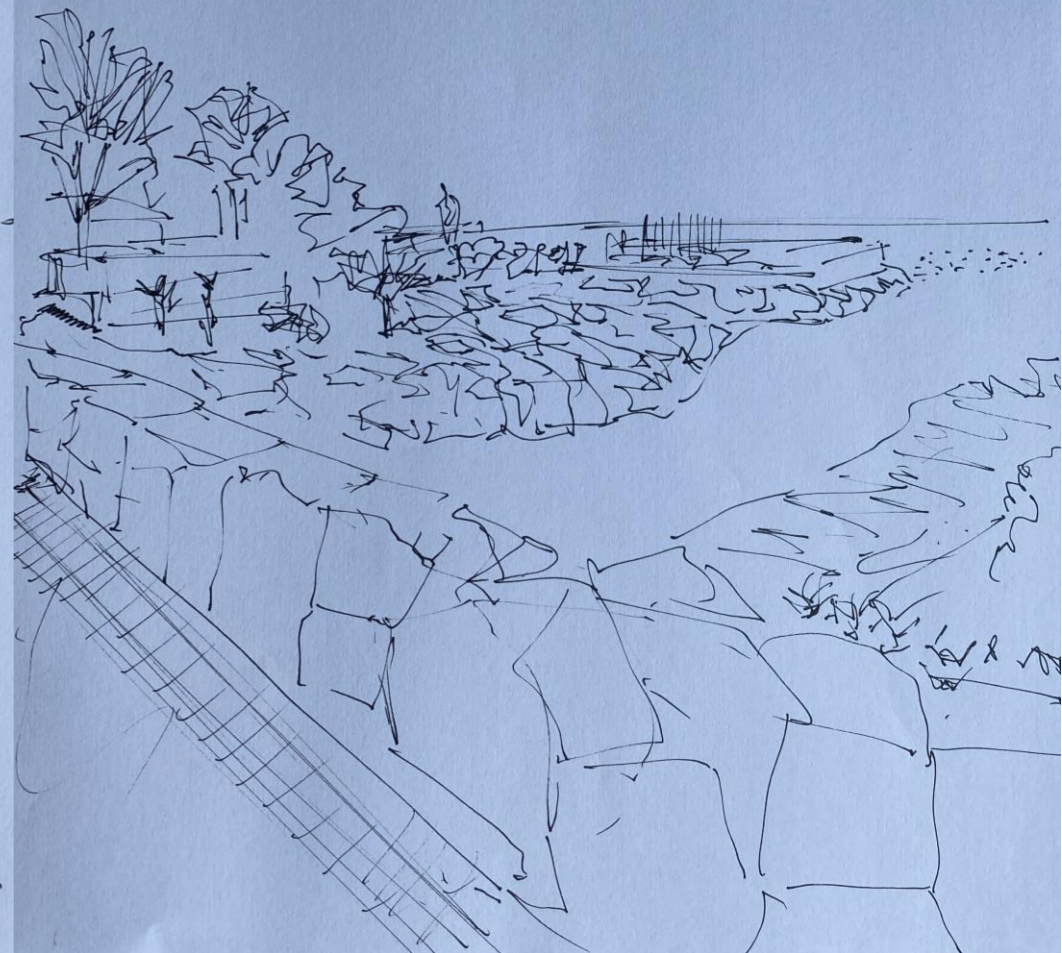


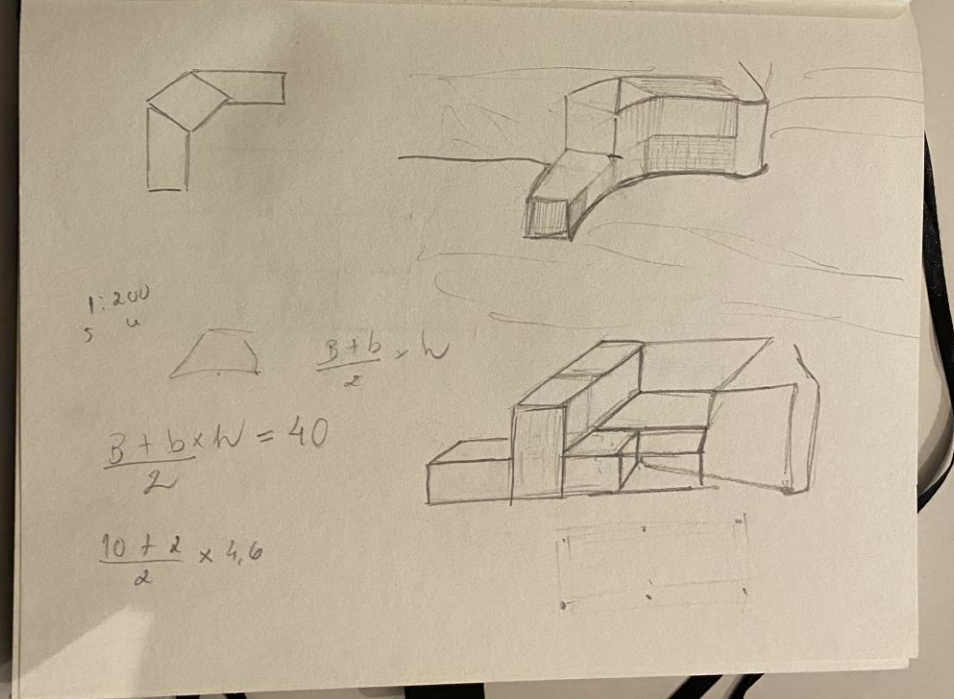
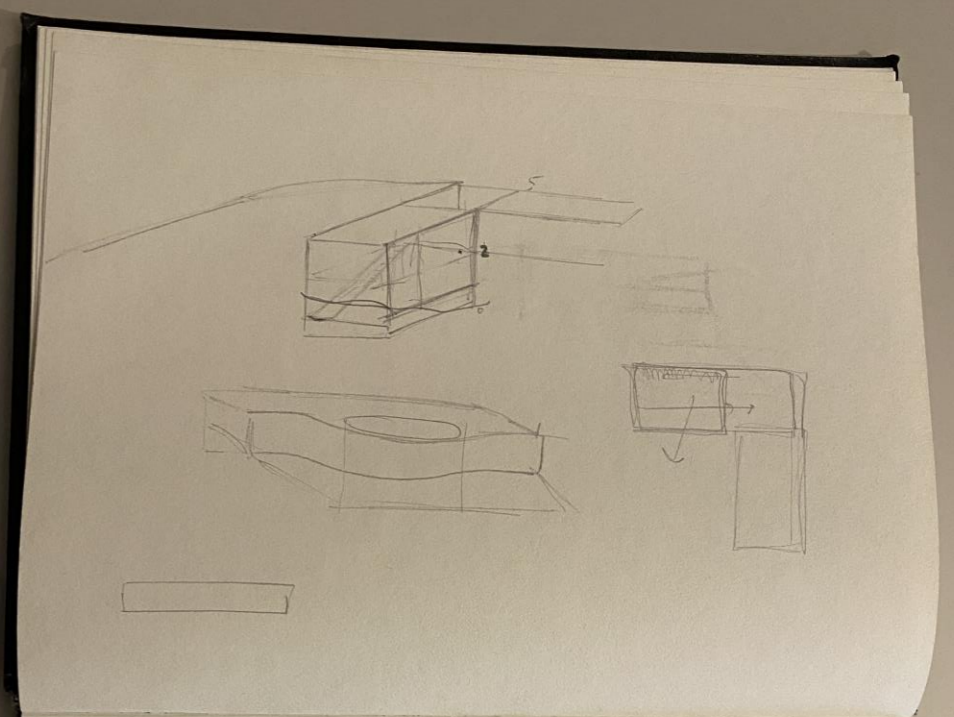
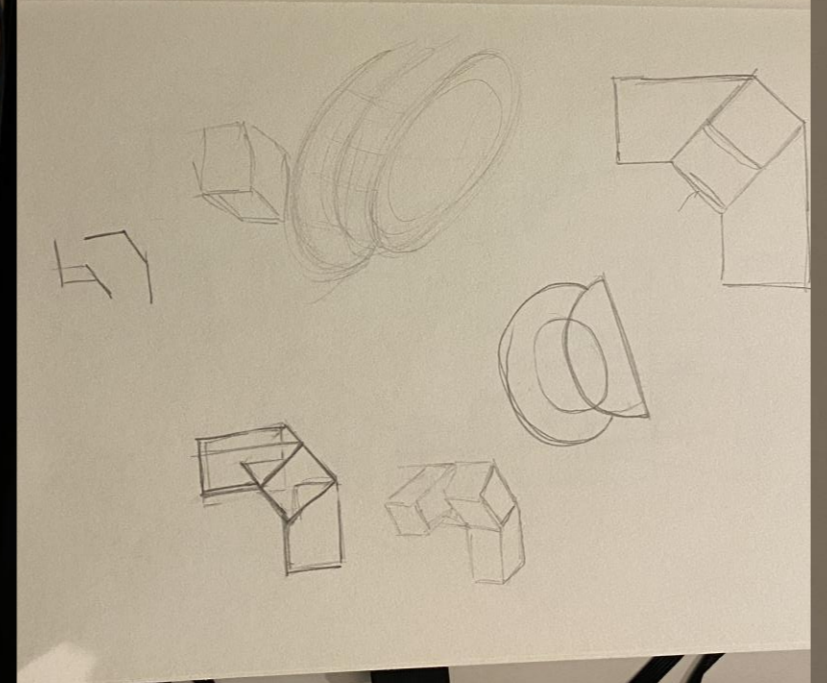
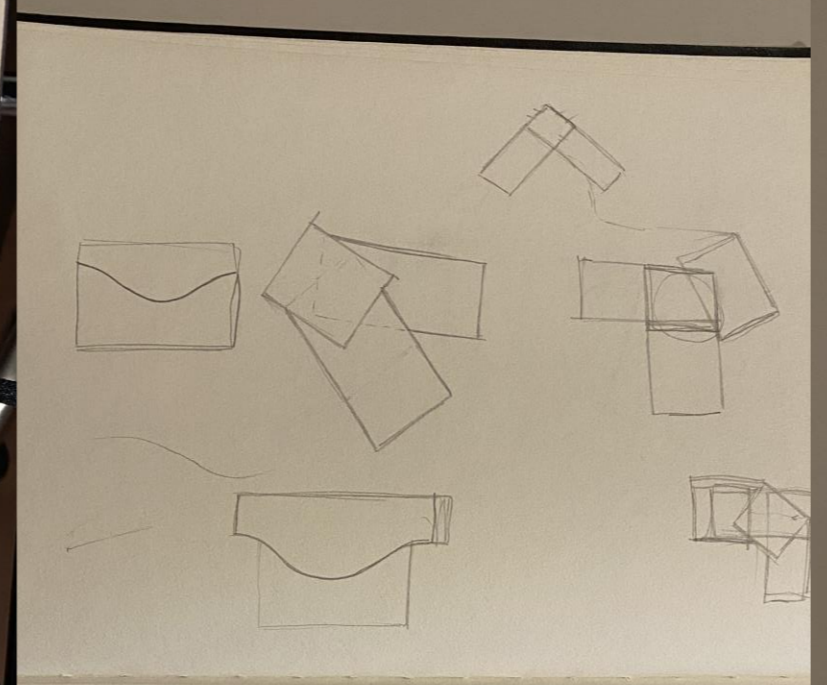
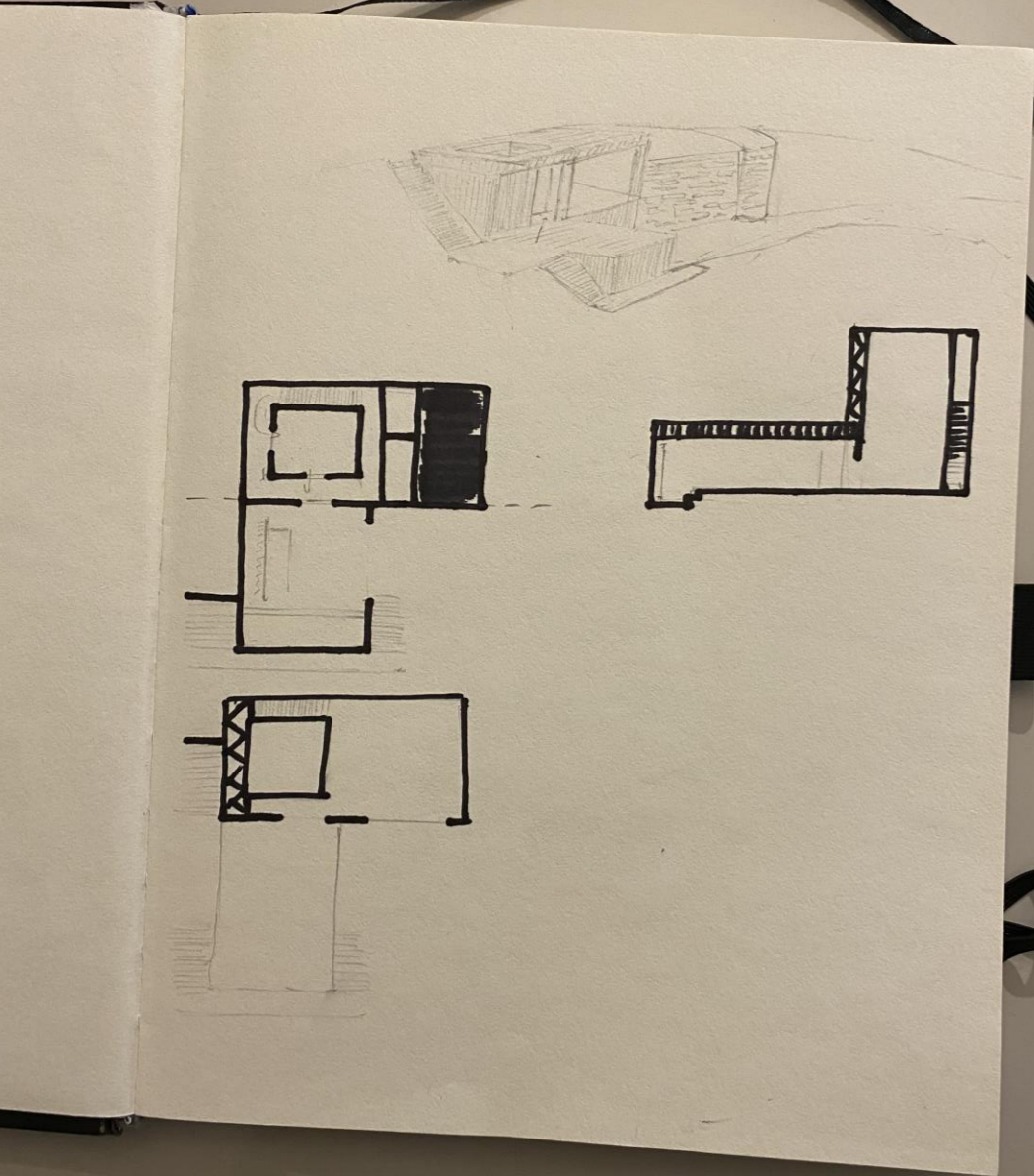
# Portfólio

1º Semestre, 2020/21



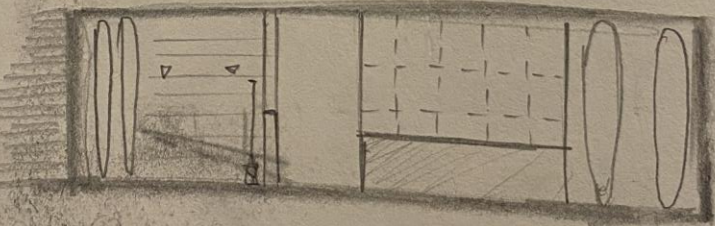
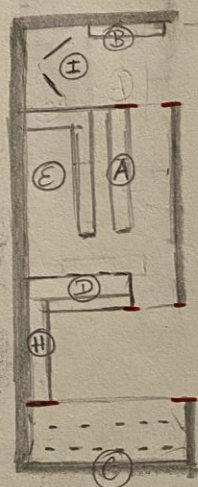






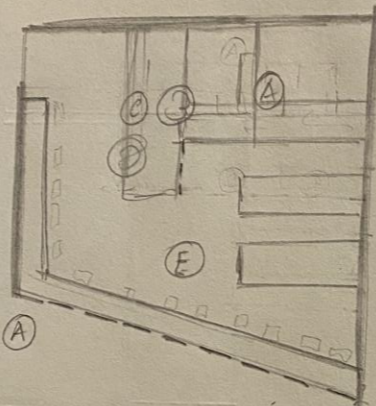
# Escola Paddle

- (A) Bancada receber cliente
- (B) Mostra pequenos itens
- (C) Zona de pranchas vertical
- (D) Zona de paguias vertical
- (E) Zona de caixas para material de clientes
- (F) Zona de mudança de roupa (Balneário)
- (G) Zona de lavagem e secagem de pranchas
- (H) Zona para guardar Fios e itens pequenos
- (I) Zona de Exposição e Amostras

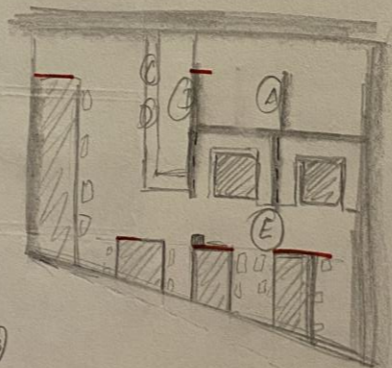


# Bar

- (A) Kitchnet
- (B) Areas de gelado
- (C) Bancada para receber clientes
- (D) Zona de Bebidas
- (E) Zona de lazer (clientes)



OPQU (A)

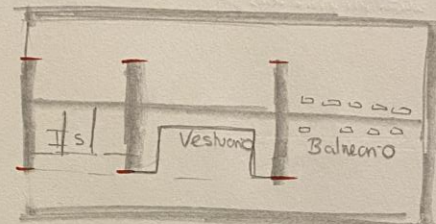


OPQU (B)

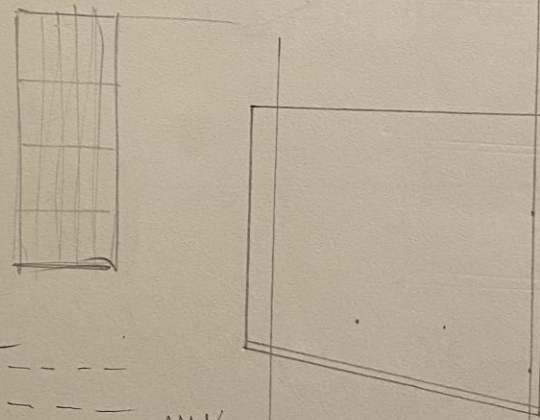
Planos Horizontais de Apoio (Muros)

# Balneários

- (A) Kitchnet
- (B) Areas de gelado
- (C) Bancada para receber clientes
- (D) Zona de Bebidas
- (E) Zona de lazer (clientes)



OPQU (A)



Planos Horizontais de Apoio (Muros)

reabor dicite  
nes itens  
rochas urtica  
aguas urtica  
cafos para  
de clientes  
lınca de rapo  
ano)  
vagem e secagem  
as  
guardar fnos  
e itens pequeno

exposiç e  
Amostrás

