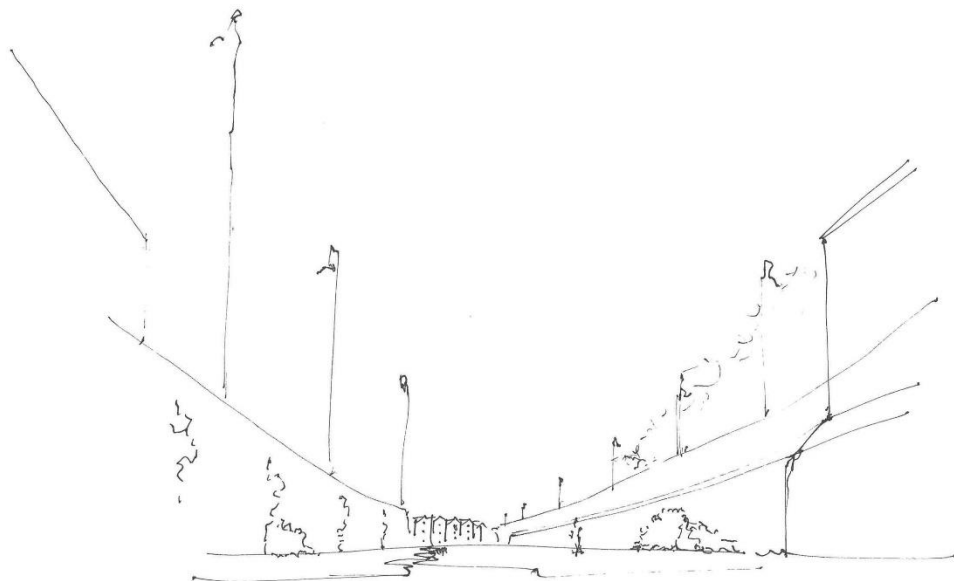


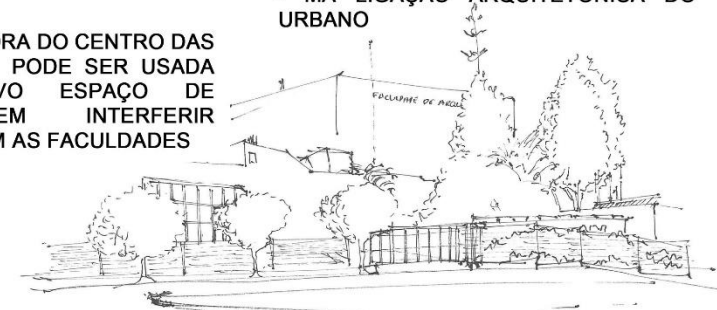
REQUALIFICAÇÃO URBANA DO POLO DA AJUDA

ANÁLISE SWOT



PONTOS FORTES	PONTOS FRACOS
<ul style="list-style-type: none"> - AS CONSTRUÇÕES TOMAM PROVEITO DO DECLIVE. - VISTA DO RIO, DA PONTE E DA MARGEM SUL - GRANDES OPORTUNIDADES DE INTERVENÇÃO - TODOS OS EDIFÍCIOS ESTÃO SUFICIENTEMENTE AFASTADOS - LADEADO DE ZONAS VERDES (INSERIDO NUM EXTREMO DE MONSANTO) - BOA ACESSIBILIDADE RODOVIÁRIO E DE TRANSPORTES - ESCOAMENTO DE ÁGUAS PLUVIAIS, DEVIDO À FORTE INCLINAÇÃO DO TERRENO 	<ul style="list-style-type: none"> - FALTA DE ZONA DE COMÉRCIO - POUCAS ZONAS DE LAZER - ESPAÇO URBANO POUCO APELATIVO - DIFÍCIL ACESSO PEDONAL - FALTA DE SEGURANÇA - POUCA INTERAÇÃO ENTRE ELEMENTOS DE FACULDADES DISTINTAS - ÁREA MUITO MAL EXPLORADA - GRANDE DECLIVE EM CERTAS ZONAS - POUCOS ESPAÇOS DE CONTEMPLAÇÃO

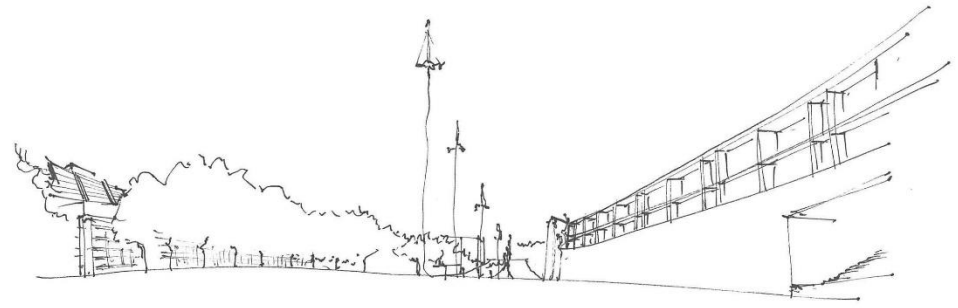
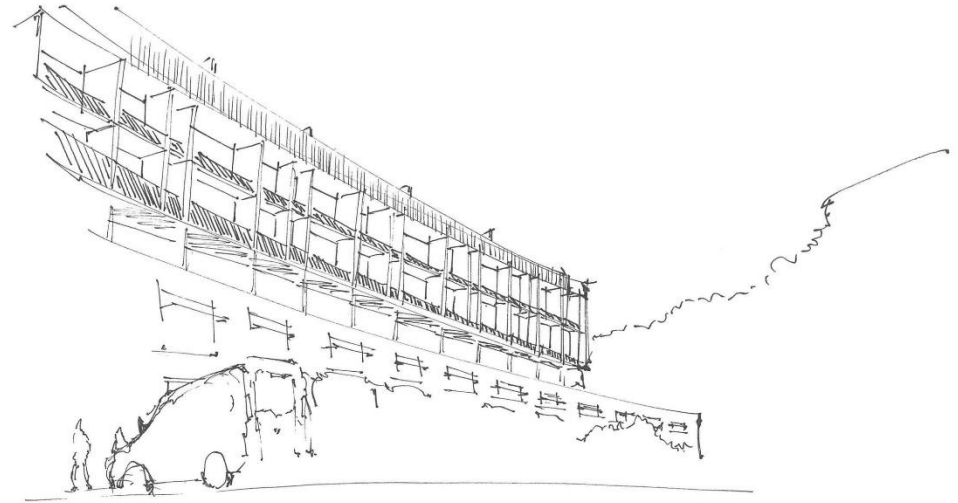
OPORTUNIDADES	AMEAÇAS
<ul style="list-style-type: none"> - GRANDES ZONAS DESCAMPADAS, TANTO PLANAS COMO COM DECLIVE ACENTUADO - INTERLIGAÇÃO DAS FACULDADES - NOVOS ESPAÇOS DE LAZER E DESPORTIVOS - NOVOS PERCURSOS, NOVAS PERSPETIVAS - GRANDE ÁREA FORA DO CENTRO DAS FACULDADES QUE PODE SER USADA PARA UM NOVO ESPAÇO DE COMÉRCIO, SEM INTERFERIR DIRETAMENTE COM AS FACULDADES 	<ul style="list-style-type: none"> - FATORES METEOROLÓGICOS ADVERSOS - DIVERSAS RAMIFICAÇÕES DE LINHAS DE ÁGUA - INCLINAÇÃO DO TERRENO - BAIRROS NAS IMEDIAÇÕES - MÁ LIGAÇÃO ARQUITETÓNICA DO URBANO



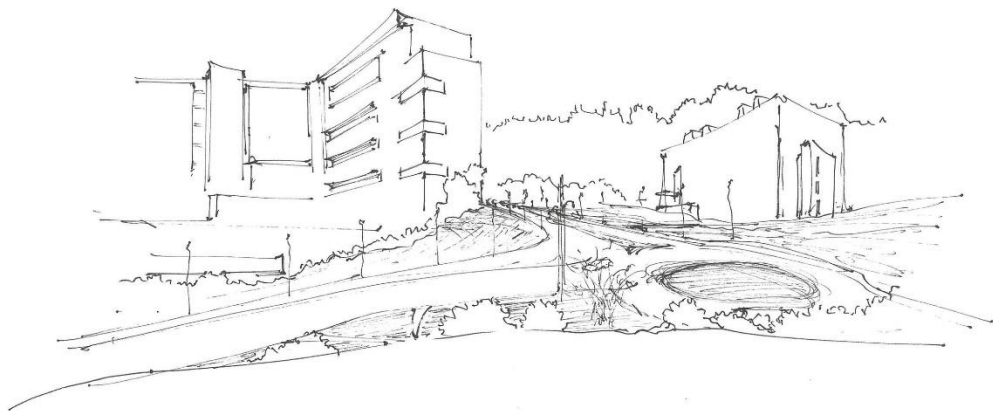
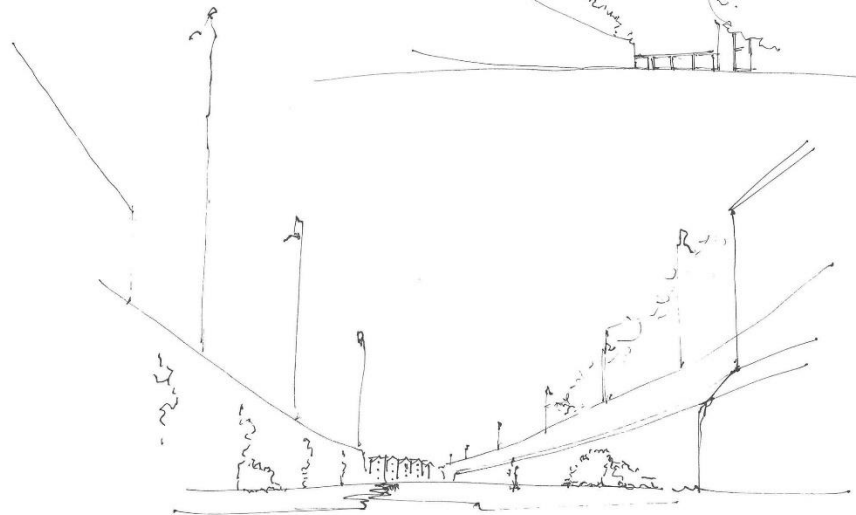
REGISTO FOTOGRÁFICO



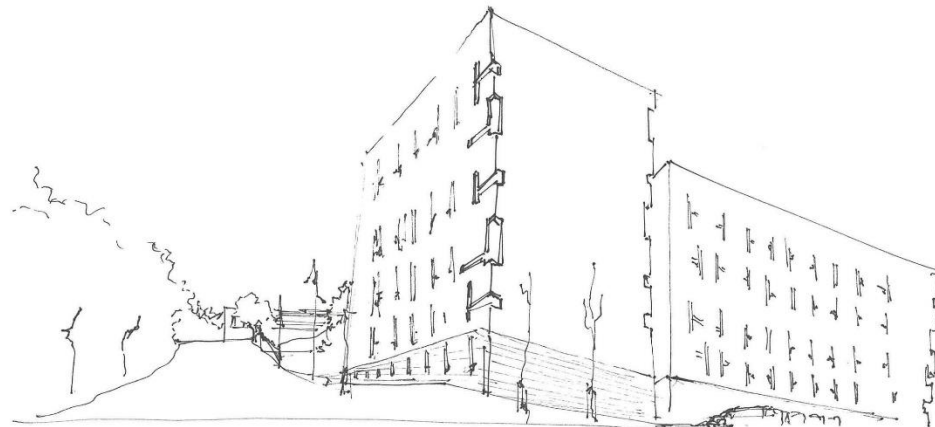
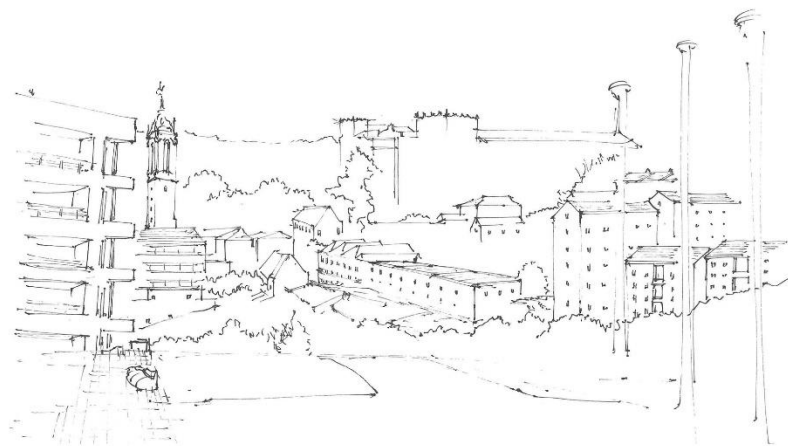
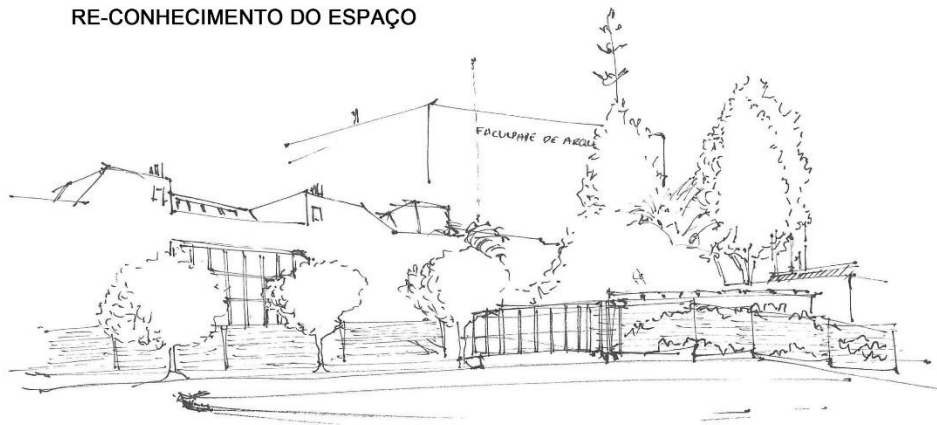
RE-CONHECIMENTO DO ESPAÇO



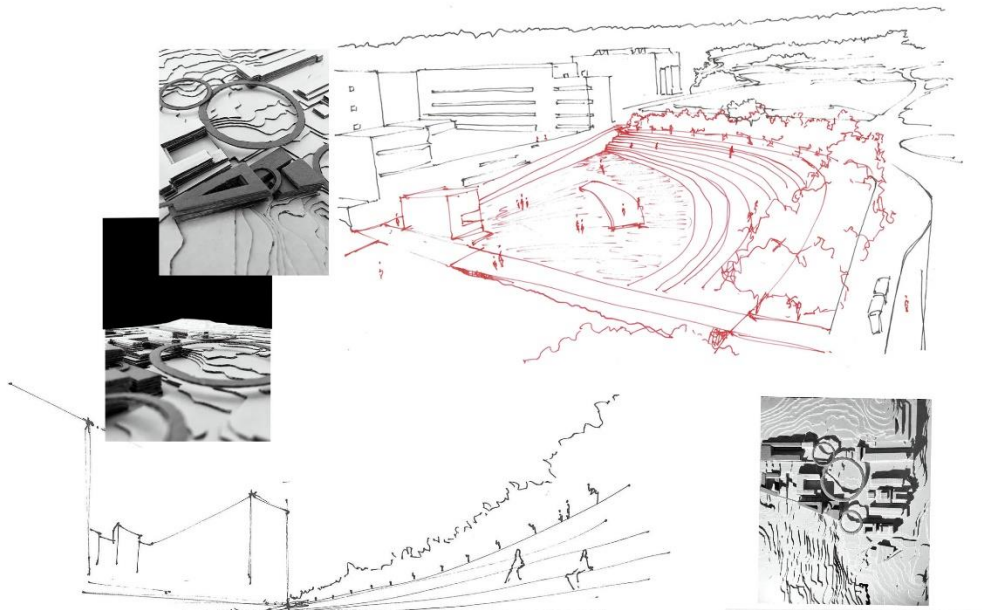
RE-CONHECIMENTO DO ESPAÇO



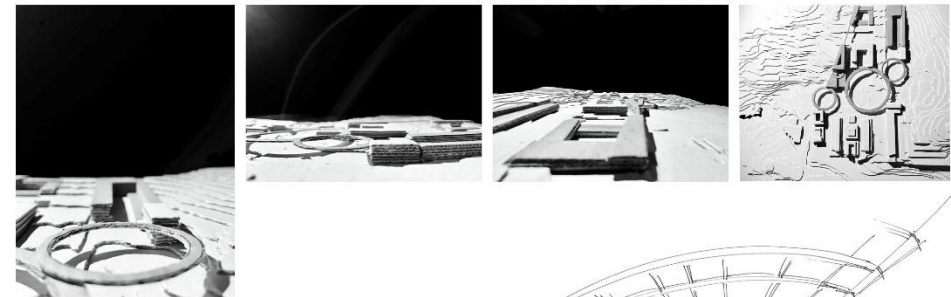
RE-CONHECIMENTO DO ESPAÇO



O CONVÍVIO E A SUA IMPORTÂNCIA

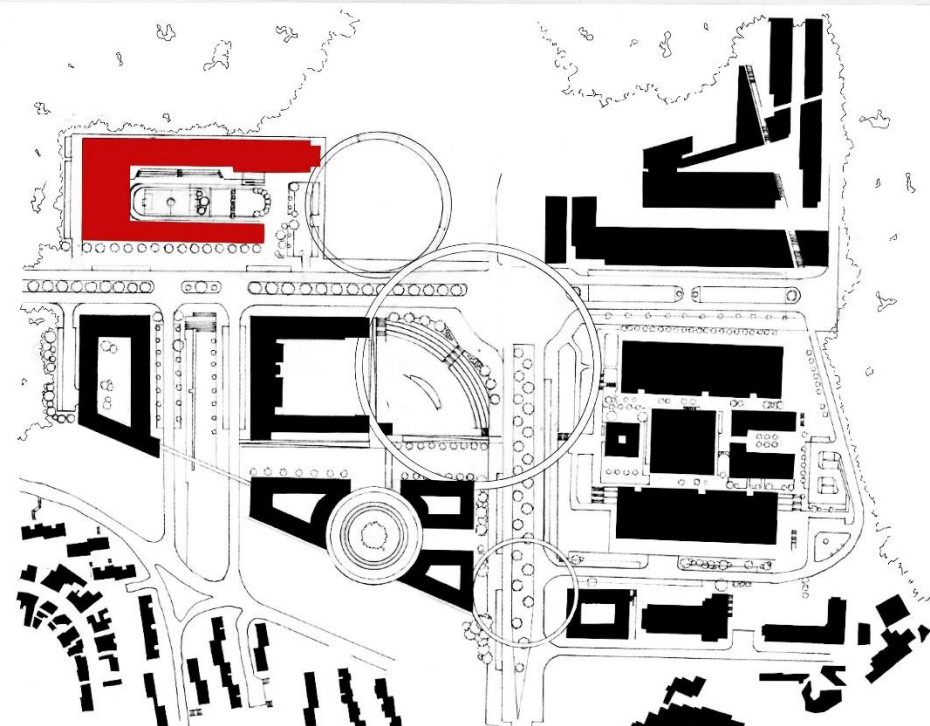
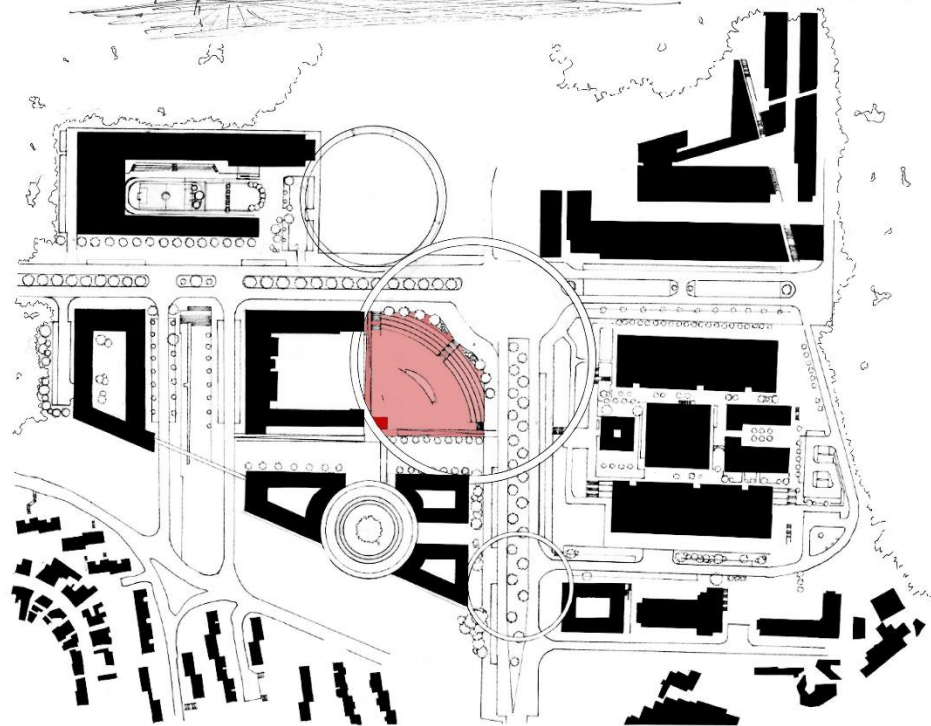


EXTENSÃO DO DESPORTO

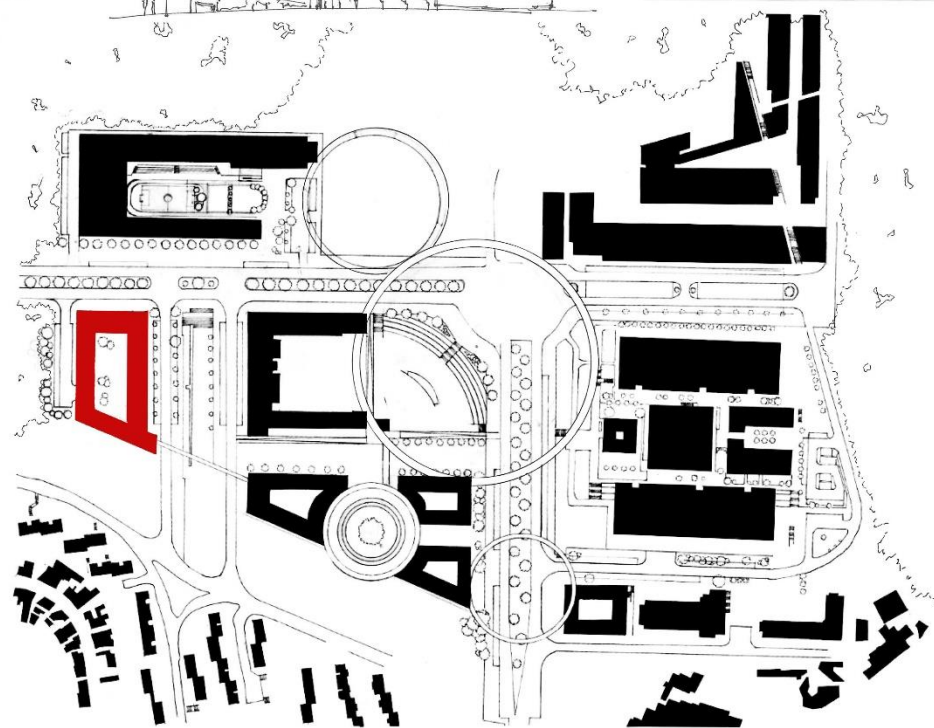
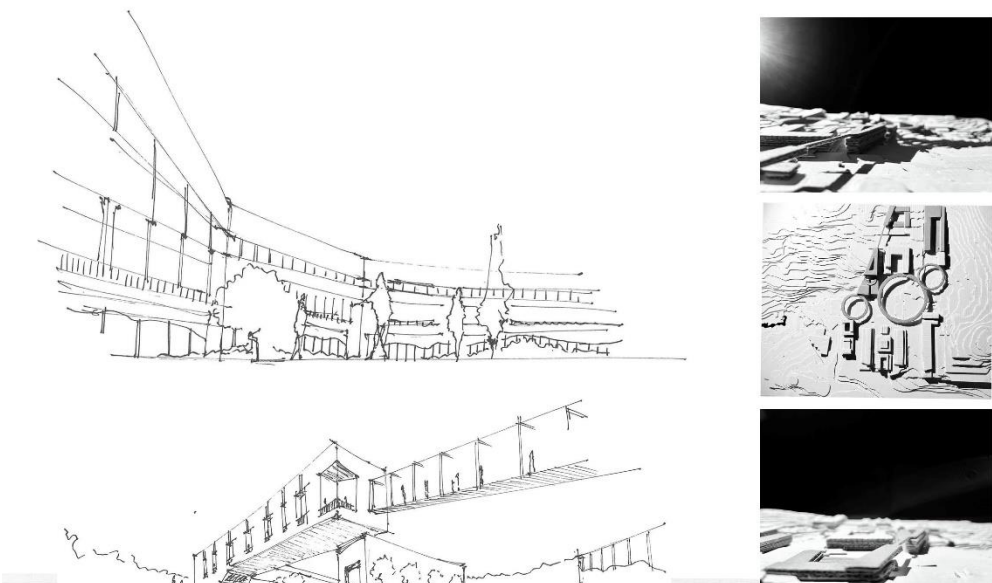


UM ESPAÇO DENTRO DE OUTRO, COM AS CARACTERÍSTICAS FUNDAMENTAIS PARA O SEU DESENVOLVIMENTO COMO NUM AMBIENTE DESPORTIVO E COLETIVO, DE FORMA A PROPORCIONAR UM BEM ESTAR E SEGURANÇA POR QUEM LÁ PASSA

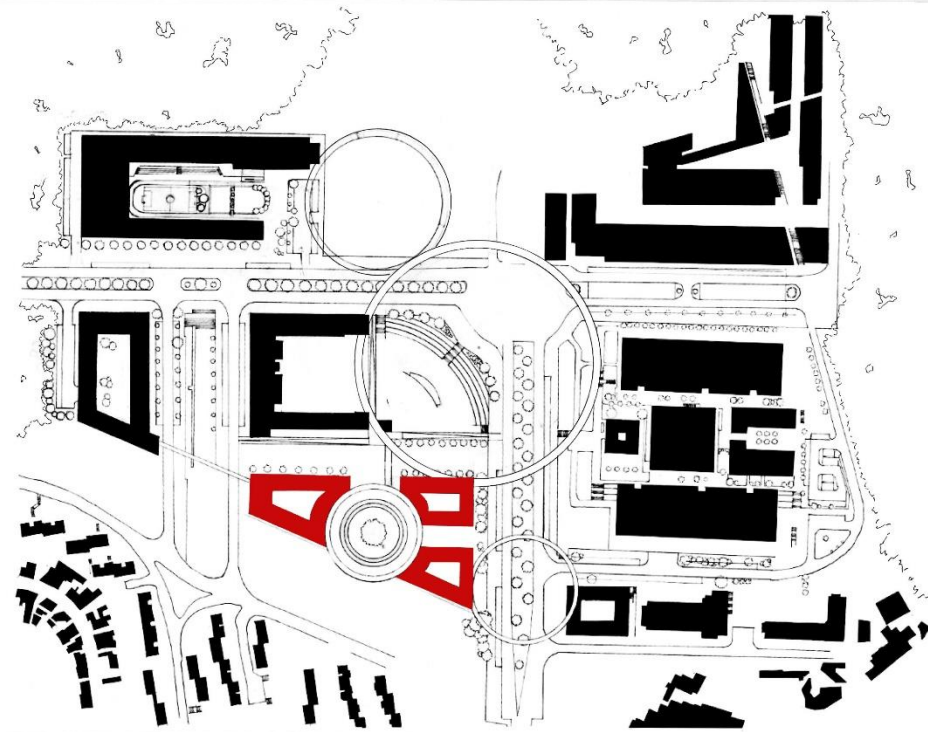
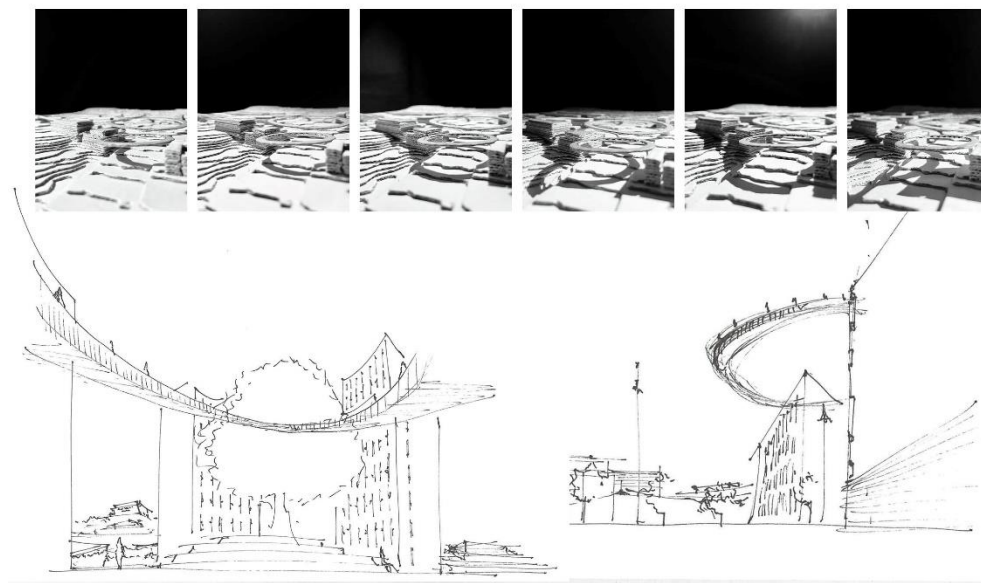
UM NOVO ESPAÇO, UM NOVO MEIO, UM NOVO DESPORTO



O COMÉRCIO E O SEU NOVO DINAMISMO

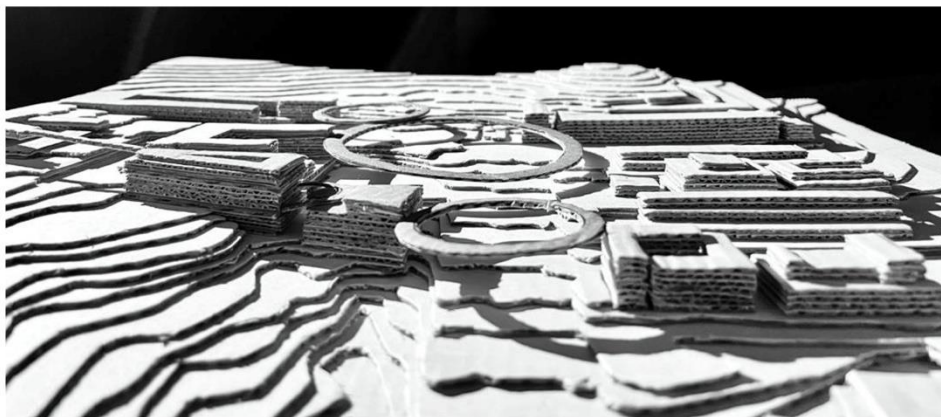
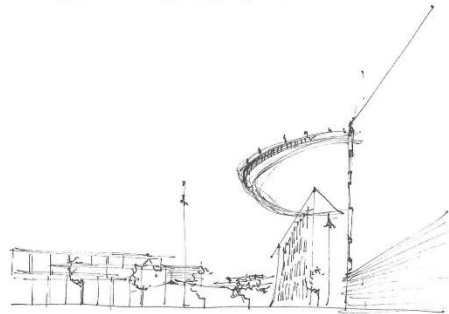
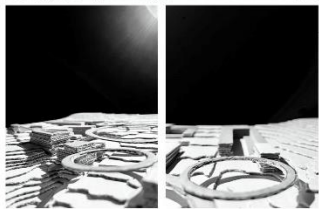
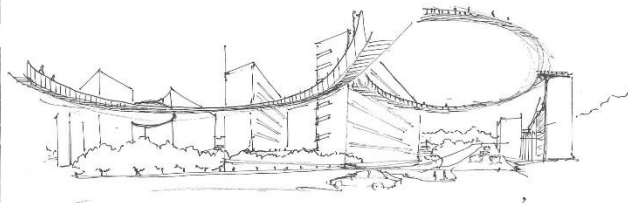
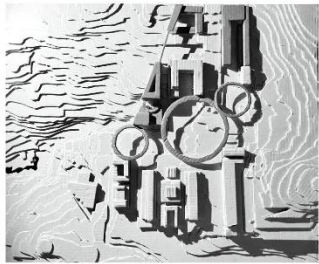
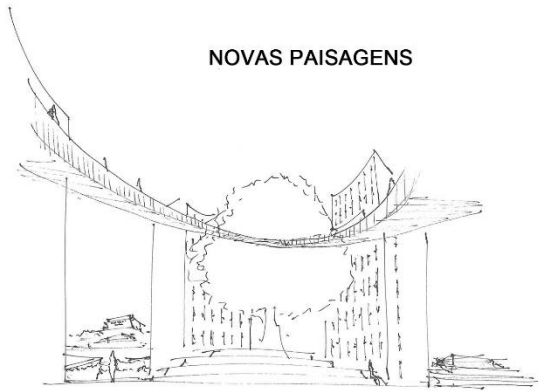


AS NOVAS RESIDÊNCIAS

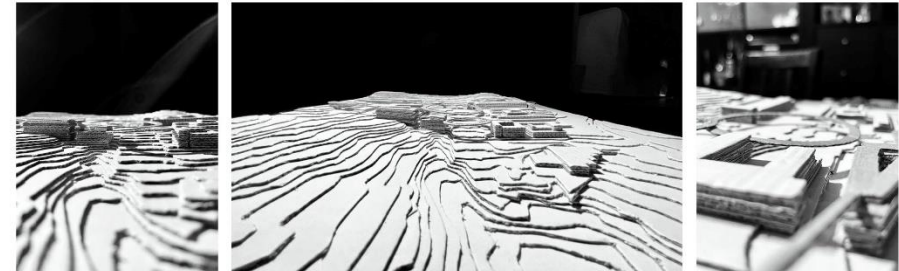




NOVAS PAISAGENS

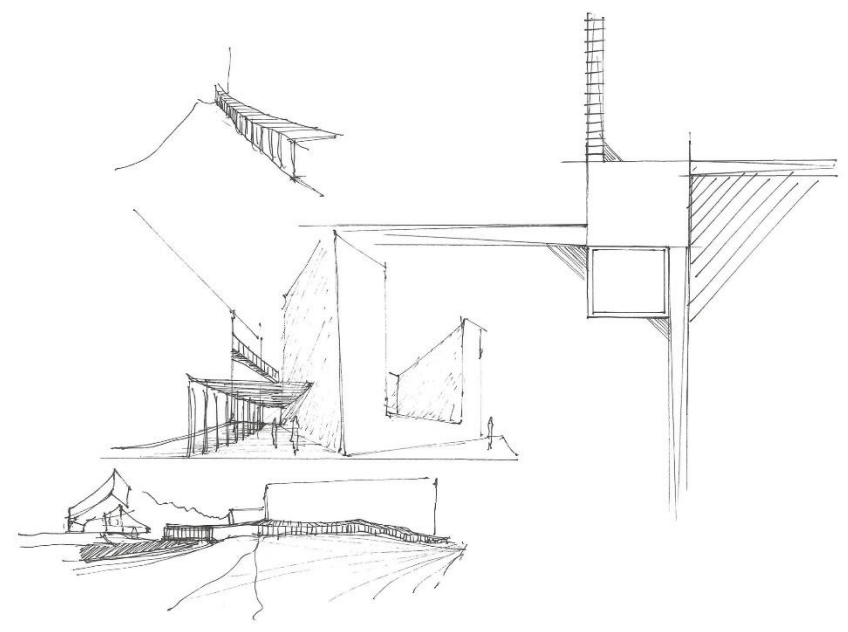


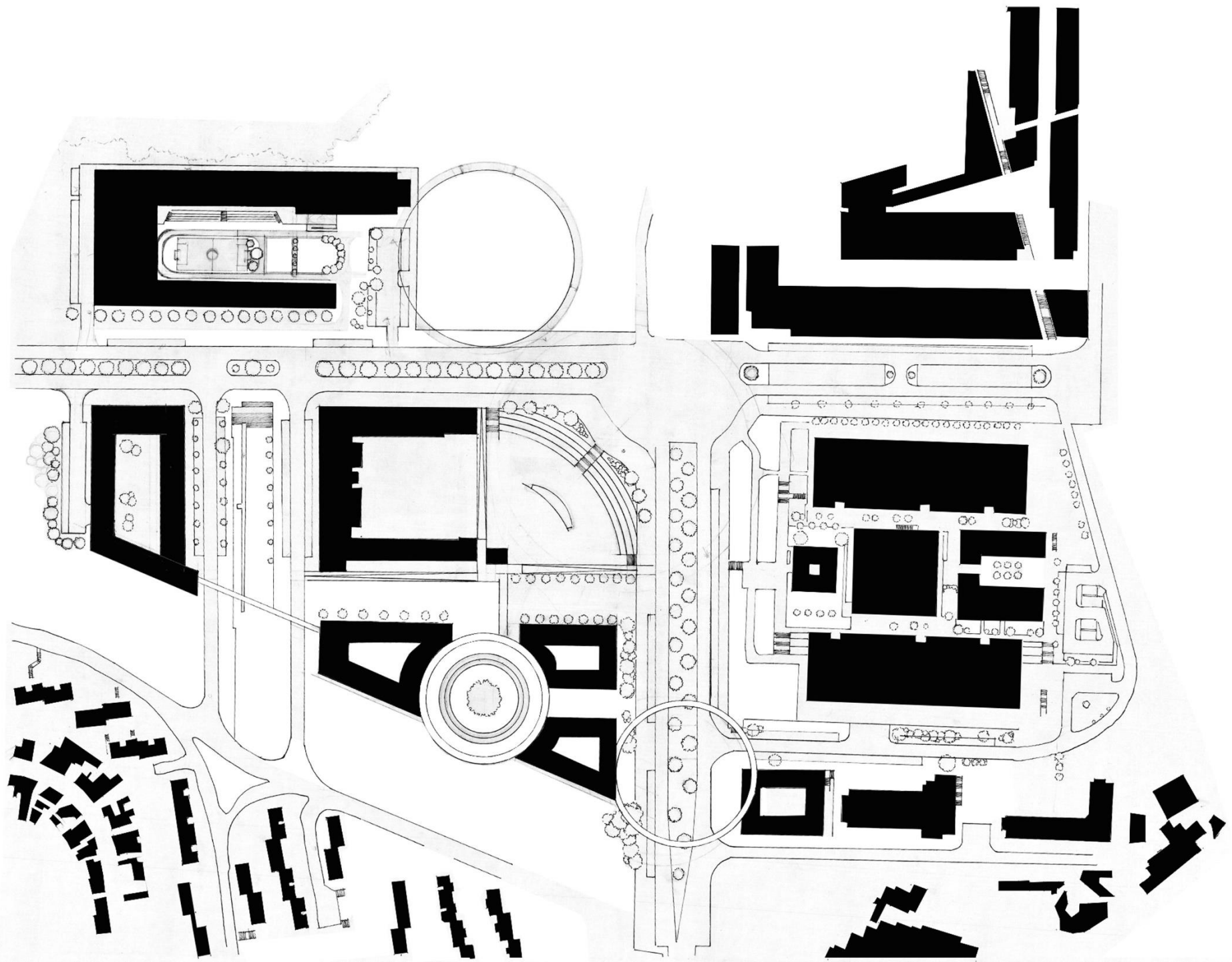
NOVOS PASSEIOS

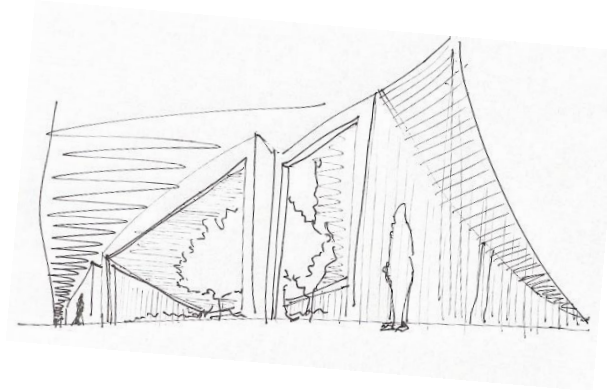
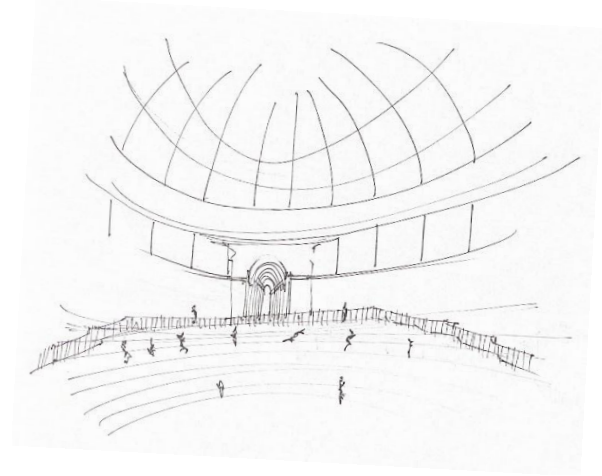
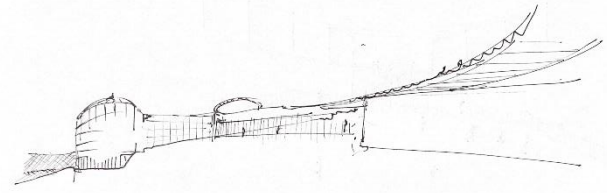
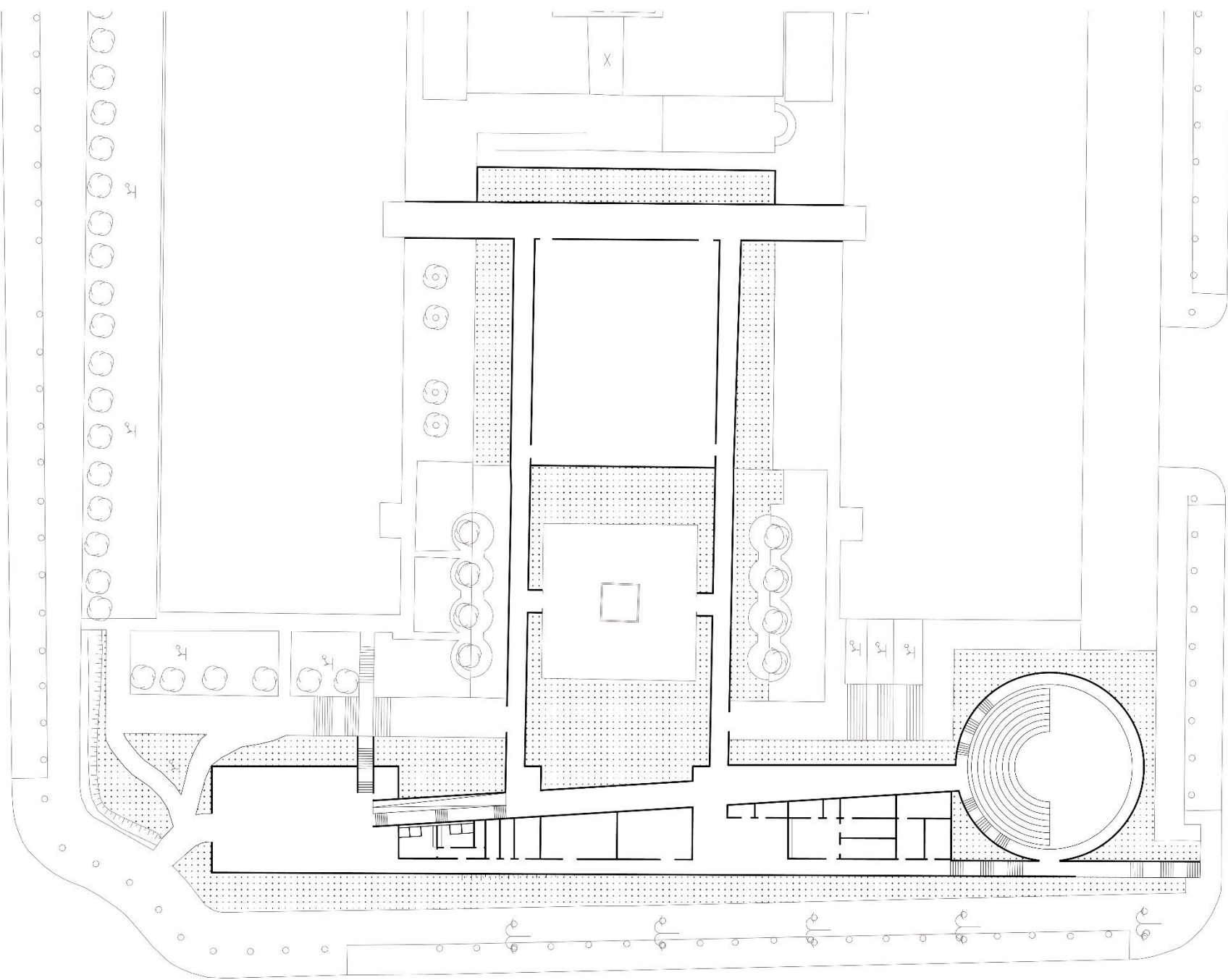


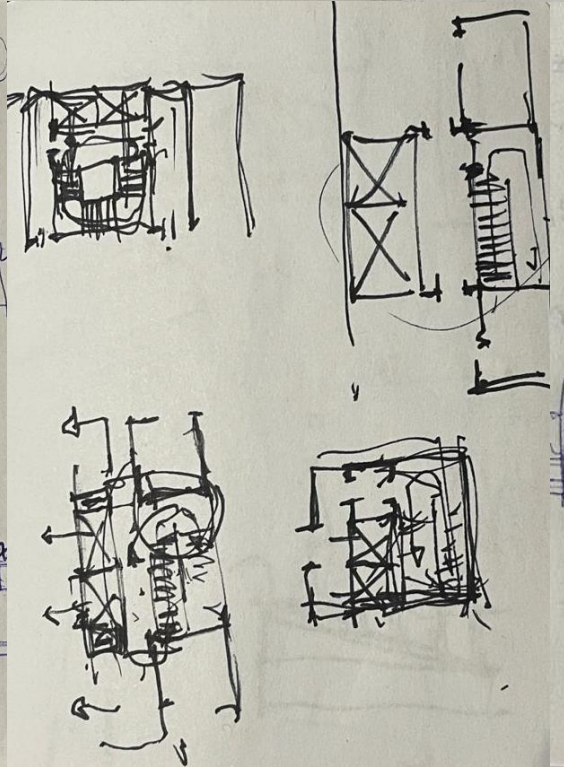
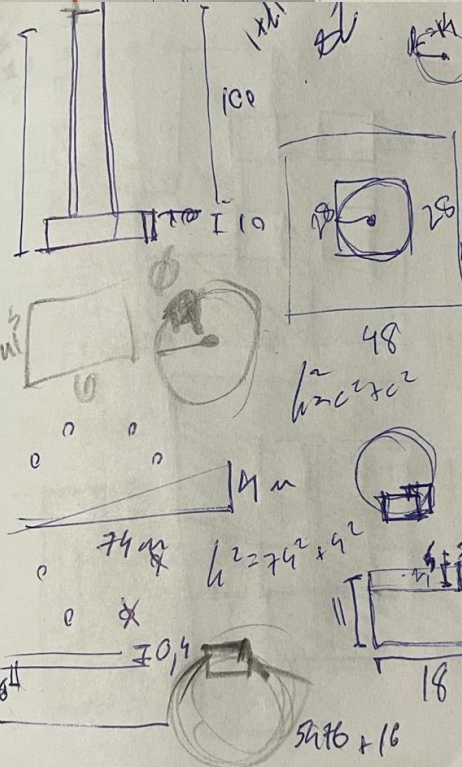
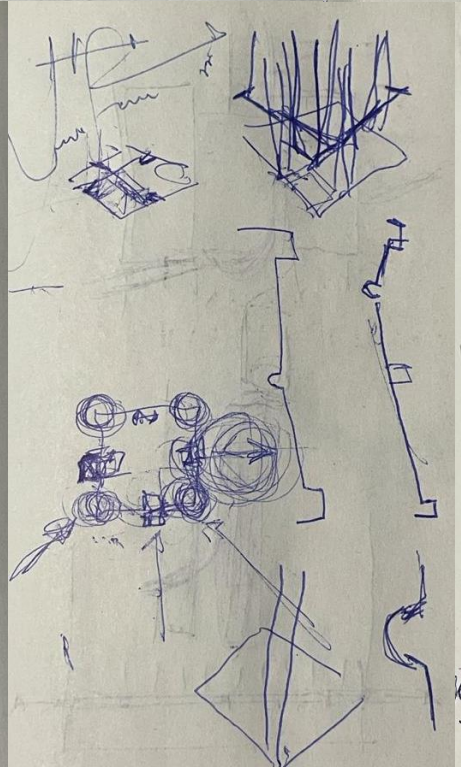
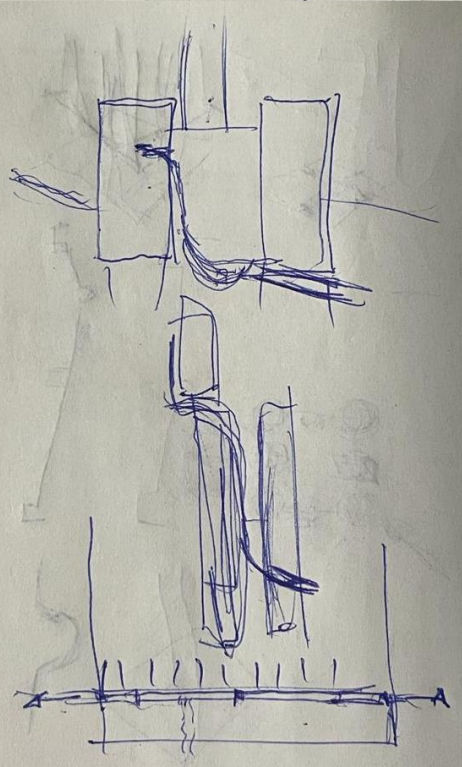
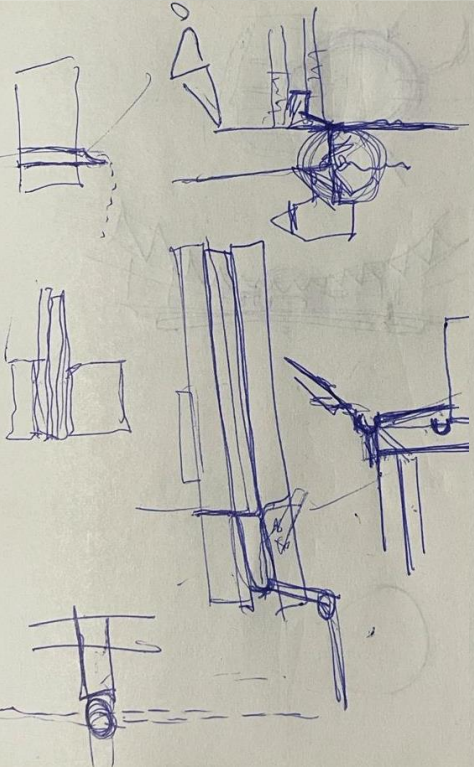
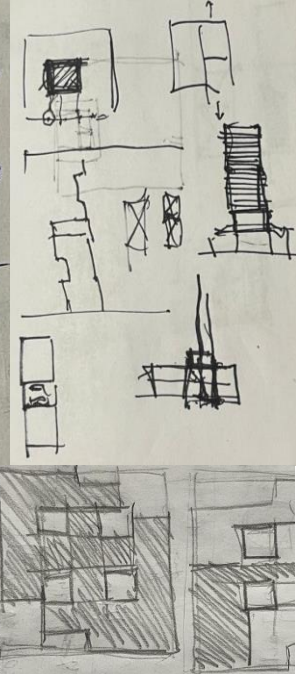
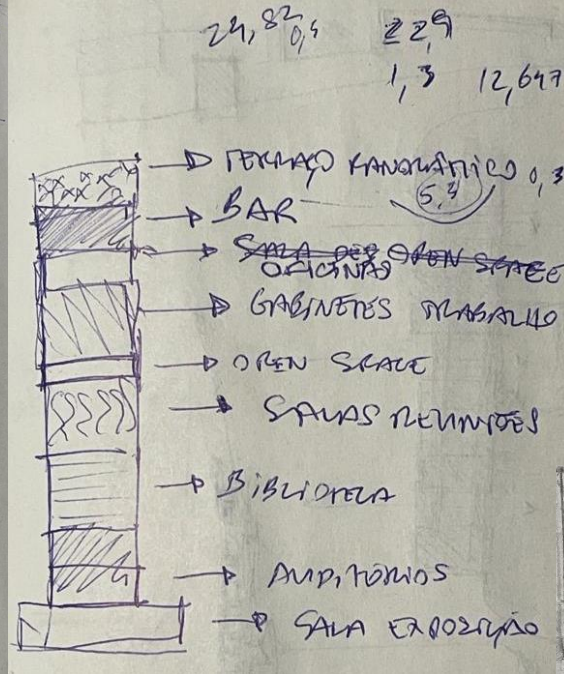
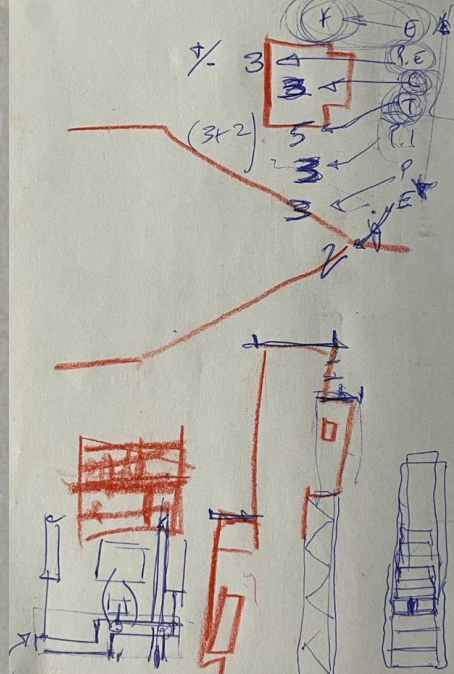
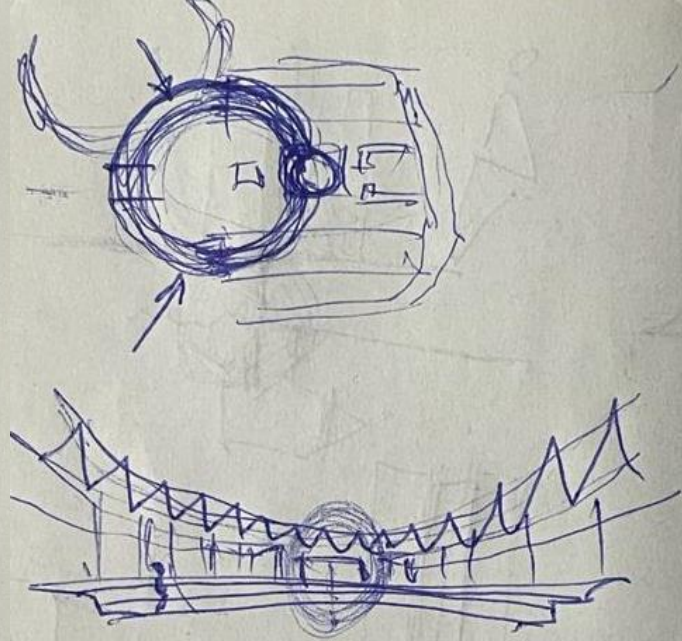
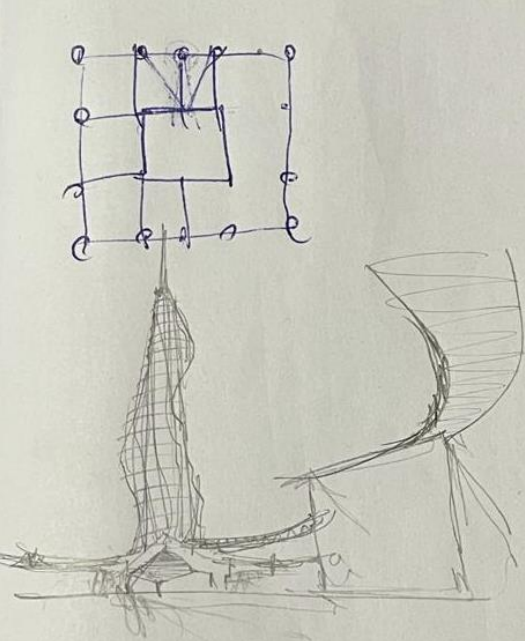
COM UMA REQUALIFICAÇÃO DO ESPAÇO VEM UMA NOVA FORMA DE VER O MESMO, NOVOS PERCURSOS, NOVAS ESQUINAS, NOVAS SOMBRAS...

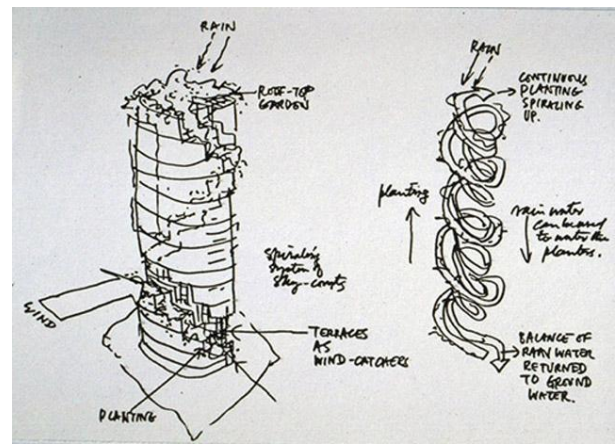
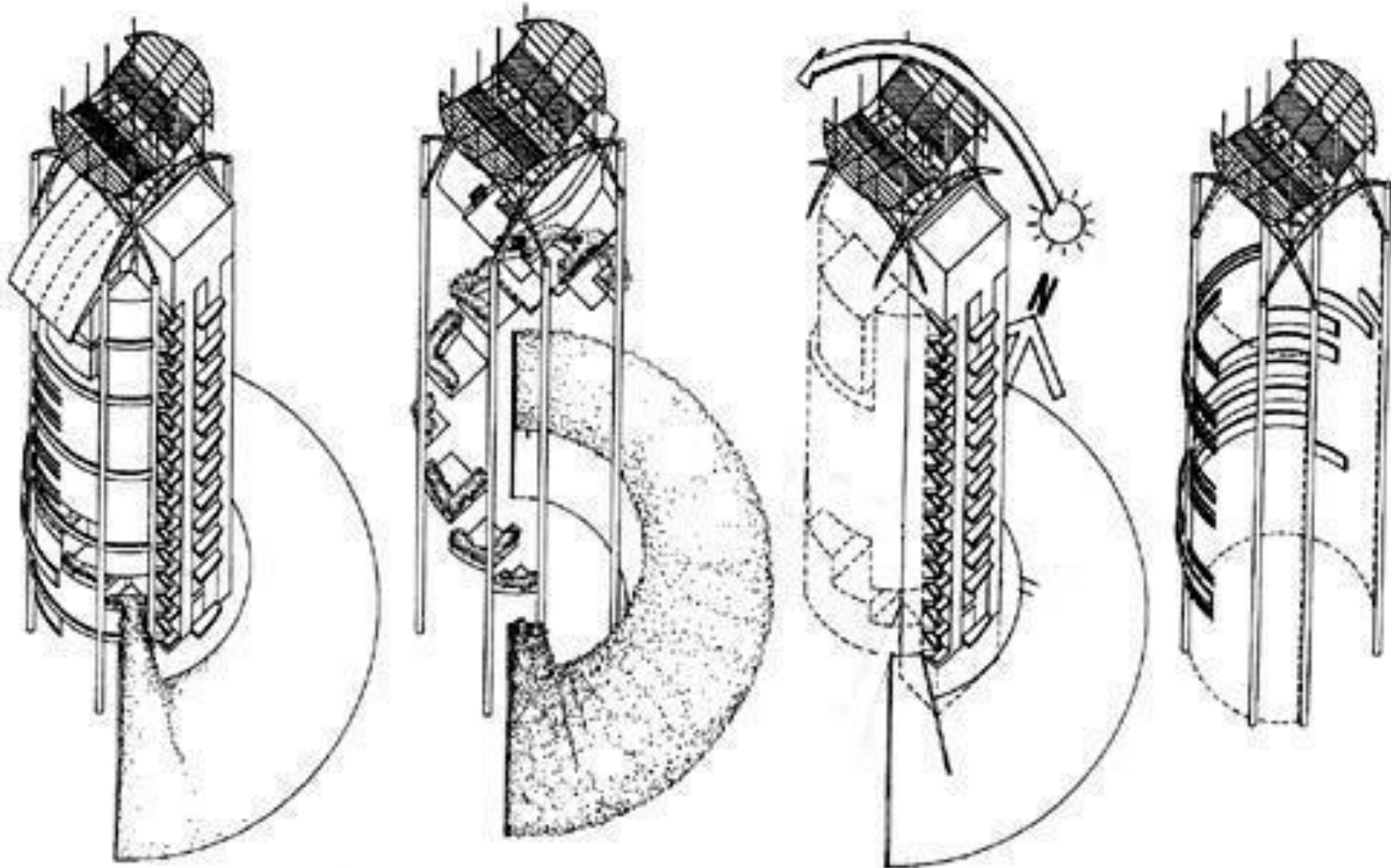
EM BAIXO PODEMOS OBSERVAR ALGUMAS IDEIAS DE PERCURSOS, SEMI-COBERTOS, TANTO NAS LATERAIS, COMO NO SEU TOPO. DO LADO DIREITO, EM DESENHO, PODEMOS OBSERVAR O CRUZMANTO DE VÁRIOS PERCURSOS NUM "PÁTIO DISTRIBUIDOR" QUE ORGANIZA TODA A ESTRUTURA TERRESTRE, SERVINDO DE CENTRO AO PROJETO, E A TODAS AS FACULDADES

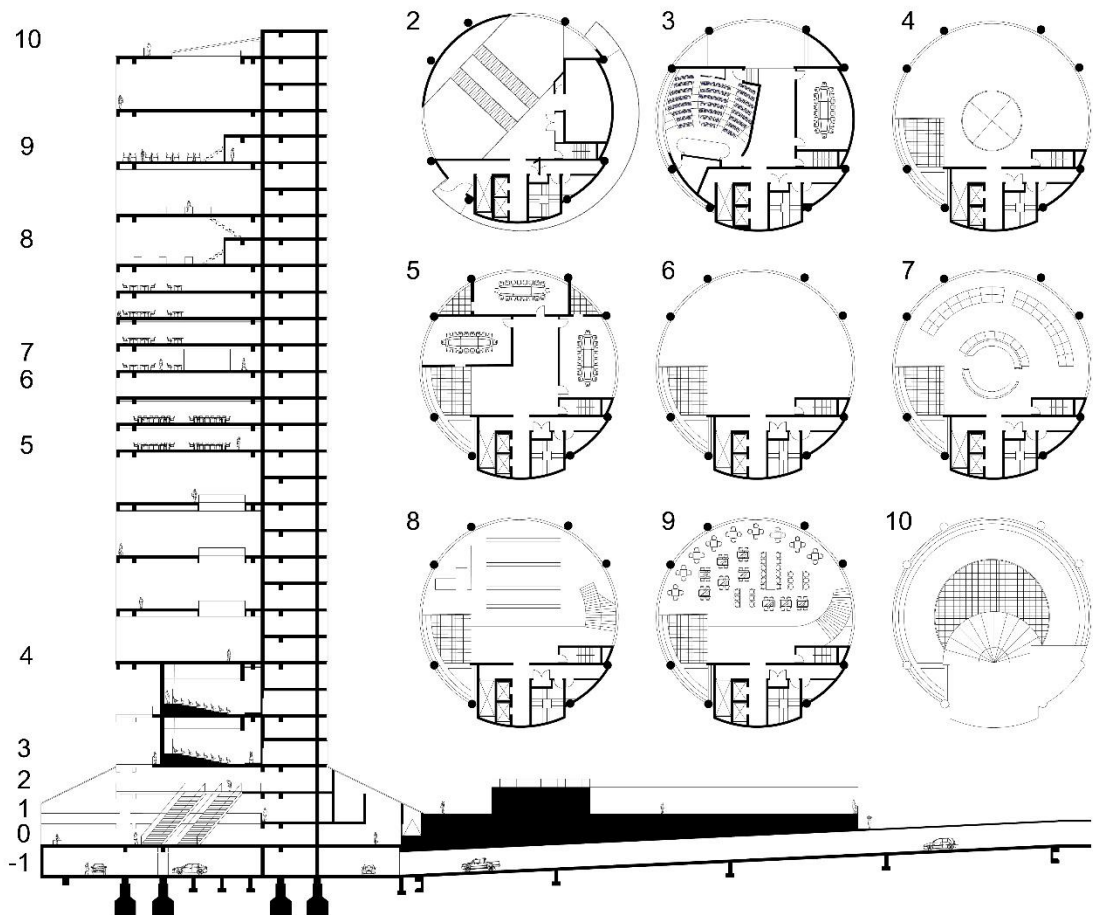












CUBO

- 1 ESTACIONAMENTO
- 0+1 ESPAÇO DE EXPOSIÇÃO

TORRE

- 2 PISO DE RECEPÇÃO
- 3 ANFITEATRO
- 4 BIBLIOTECA
- 5 SALA DE REUNIÕES
- 6 OPEN SPACE
- 7 SALAS DE TRABALHO
- 8 OFICINAS
- 9 BAR
- 10 COBERTURA

A ANDAR TIPO (COM ESTRUTURA)

