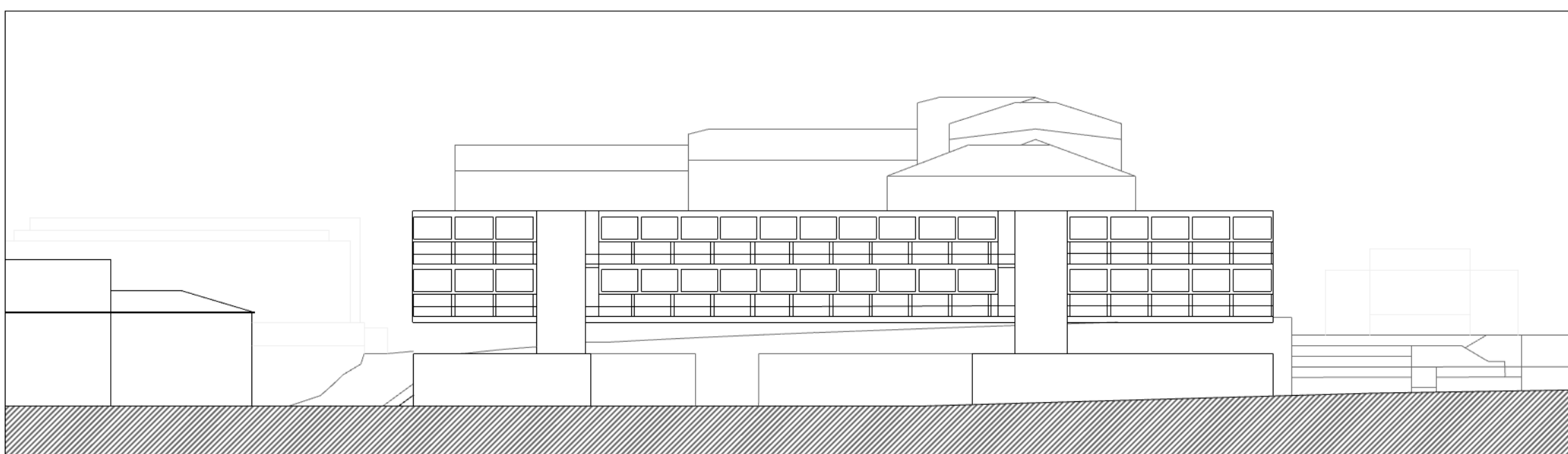
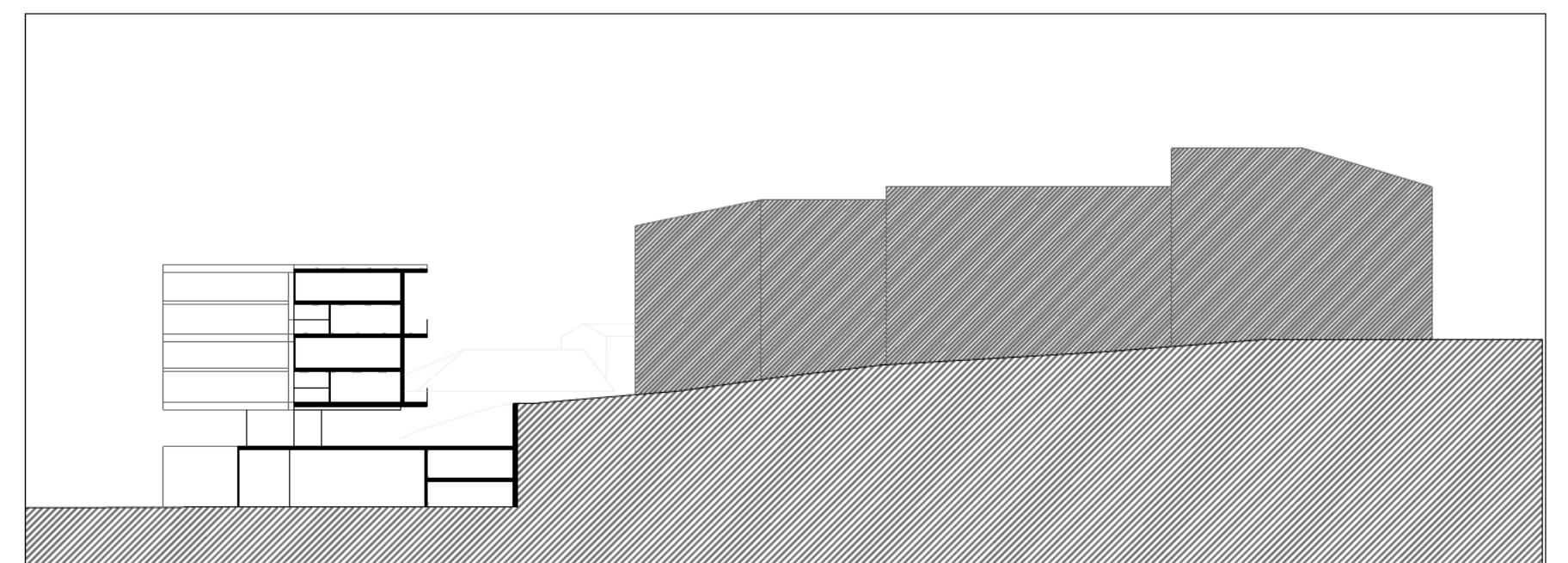


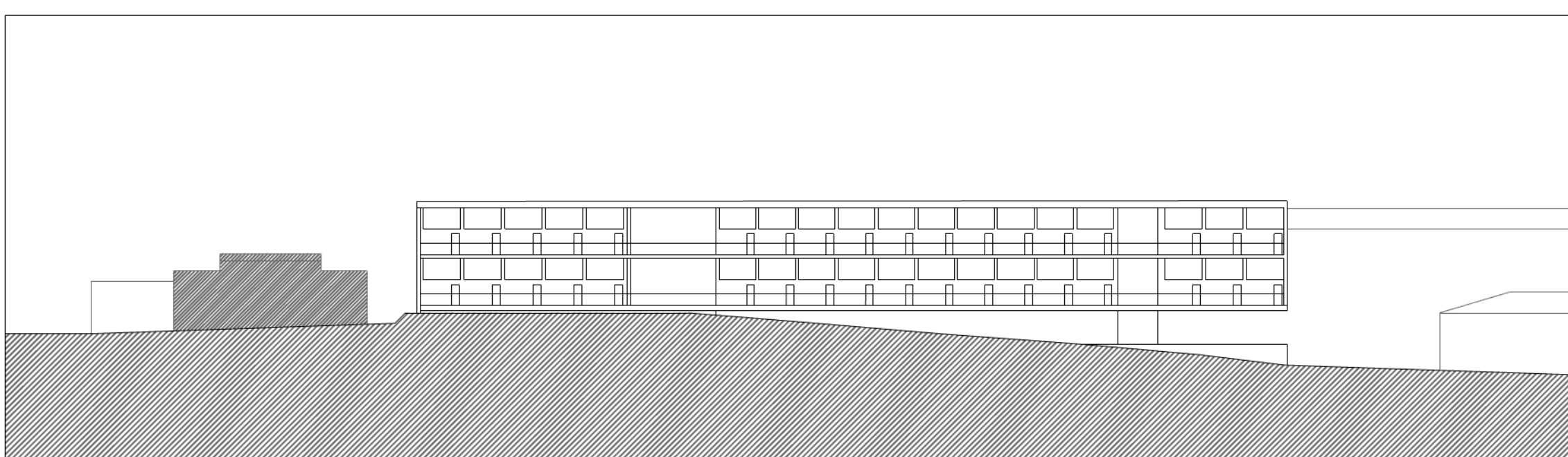
PLANTA COBERTURA ☉



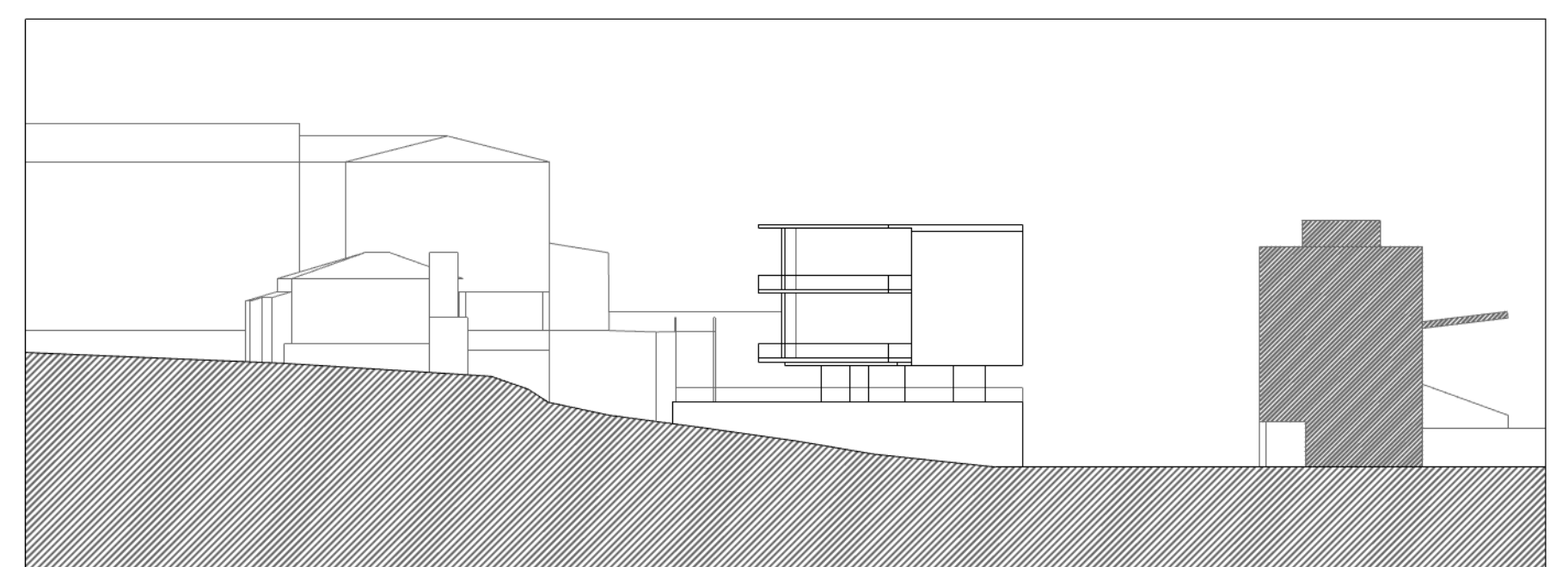
PERFIL LONGITUDINAL AA' - RUA DR. FÉLIX ALVES PEREIRA



PERFIL TRANSVERSAL CC'



PERFIL LONGITUDINAL BB' - RUA MIRA SINTRA



PERFIL TRANSVERSAL DD'

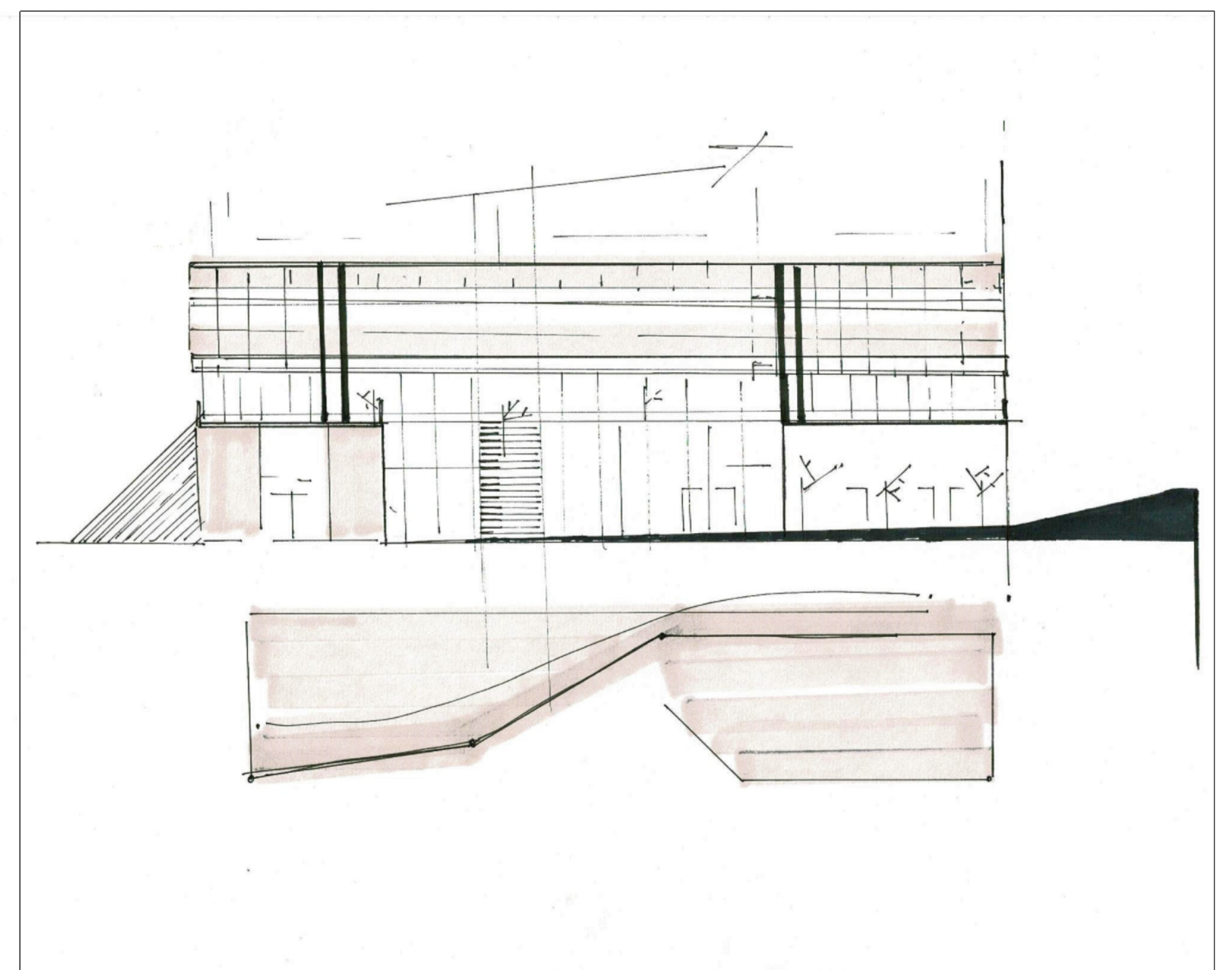
Utopia

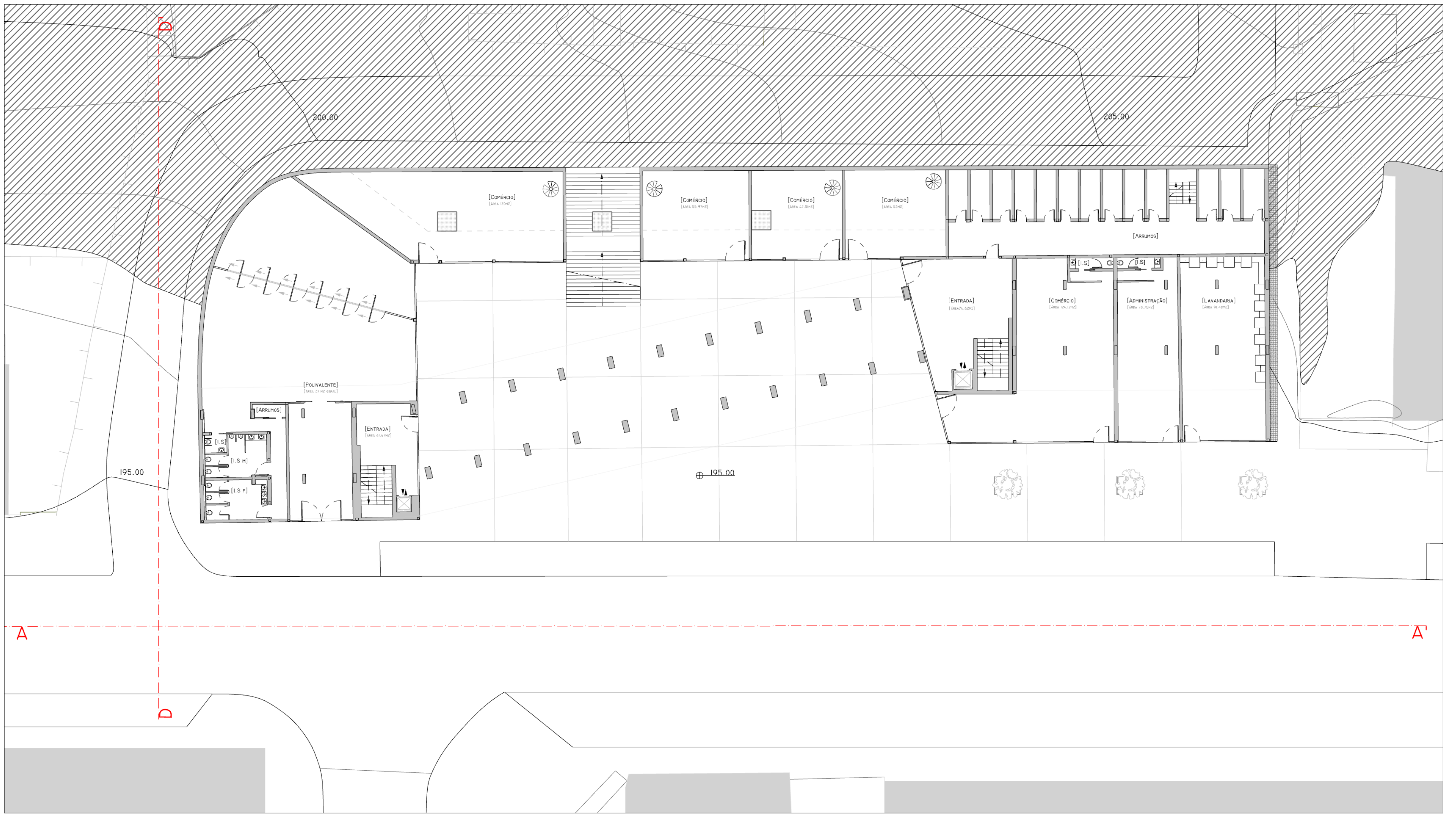
" Consulto o dicionário e leio:
"país imaginário em que tudo está organizado de uma forma superior"
e ainda
"sistema ou plano que parece irrealizável"

ou
" palavra forjada por Thomas Moore para nomear uma ilha ideal"

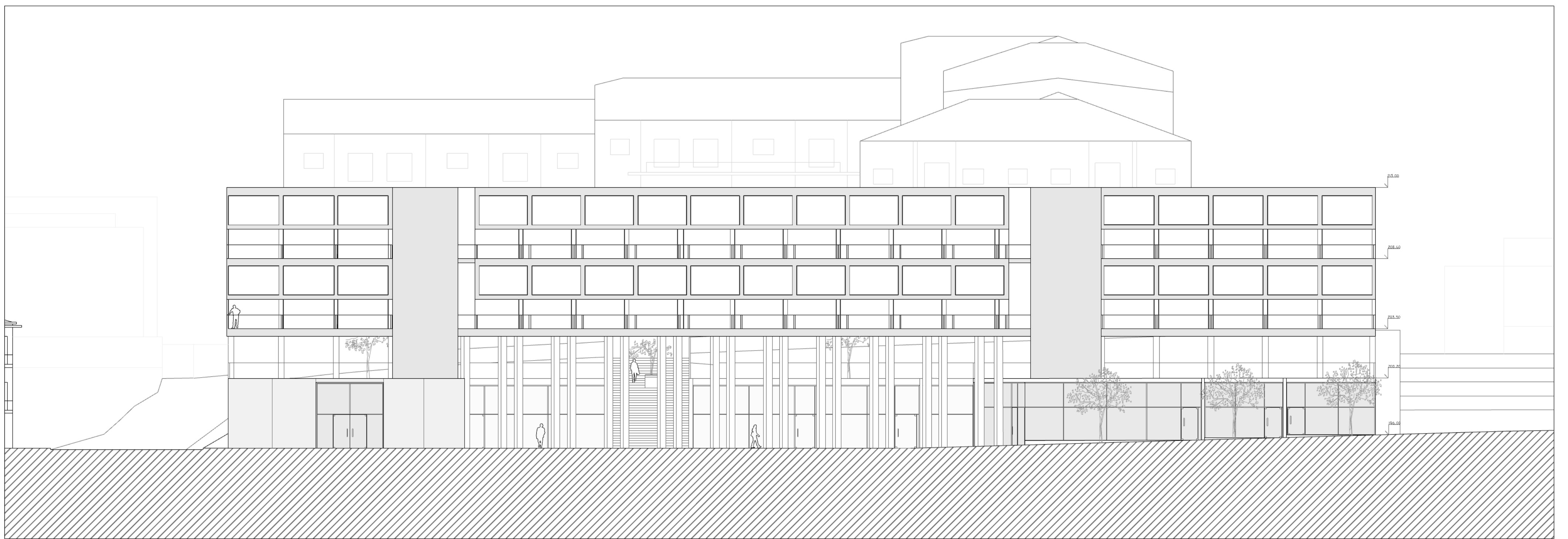
Imagino: uma ilha navegante, como a jangada de pedra de Saramago, a ancorar simultaneamente em todos os continentes.
Um sistema ou plano que já não parece irrealizável - porque se move e é aberto.
Nem é - desejo eu - "país imaginário em que tudo está organizado de forma superior".
Uma utopia não é utópica"

- Álvaro Siza, Textos 03

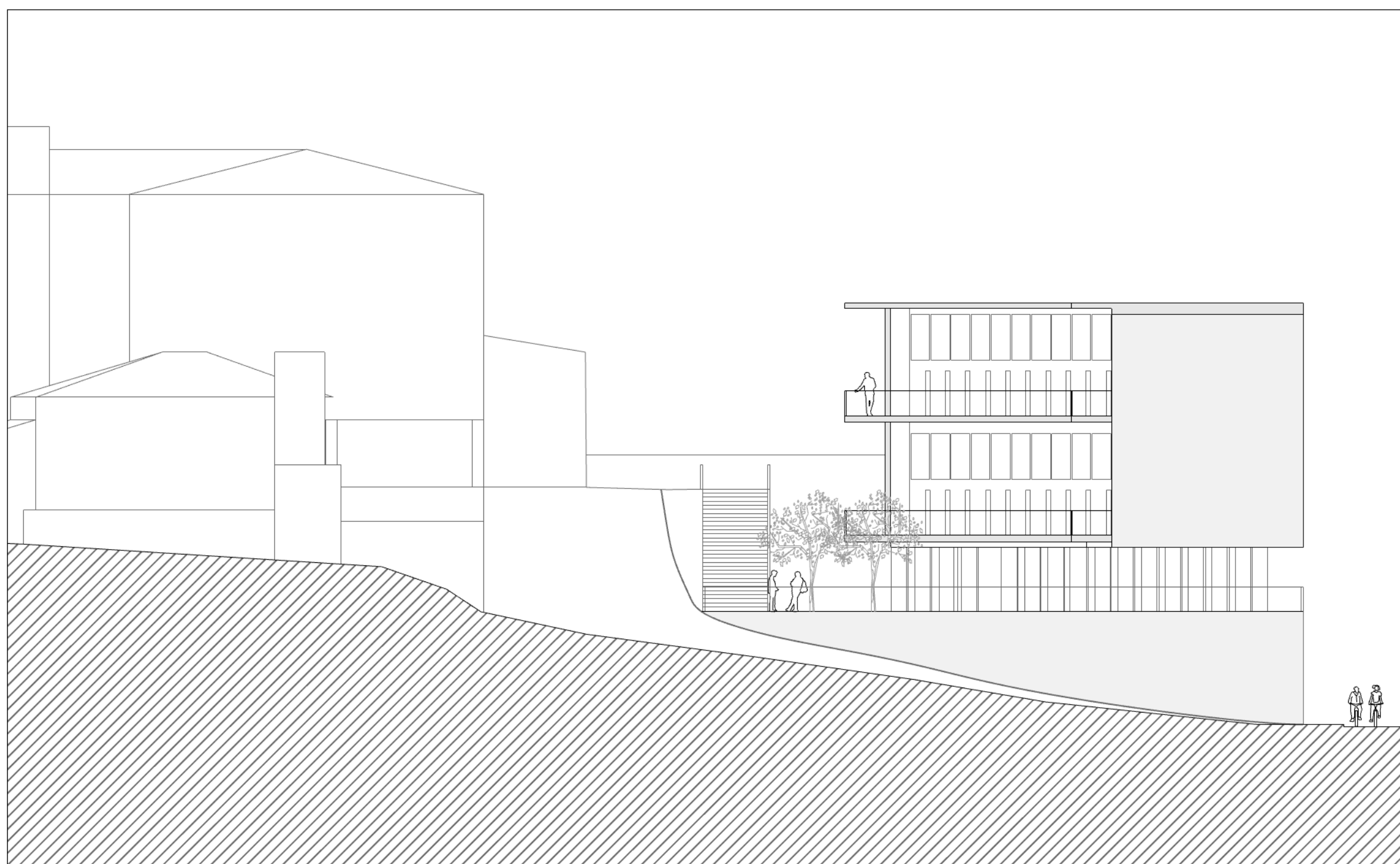




PLANTA PISO TÉRREO . COTA 197

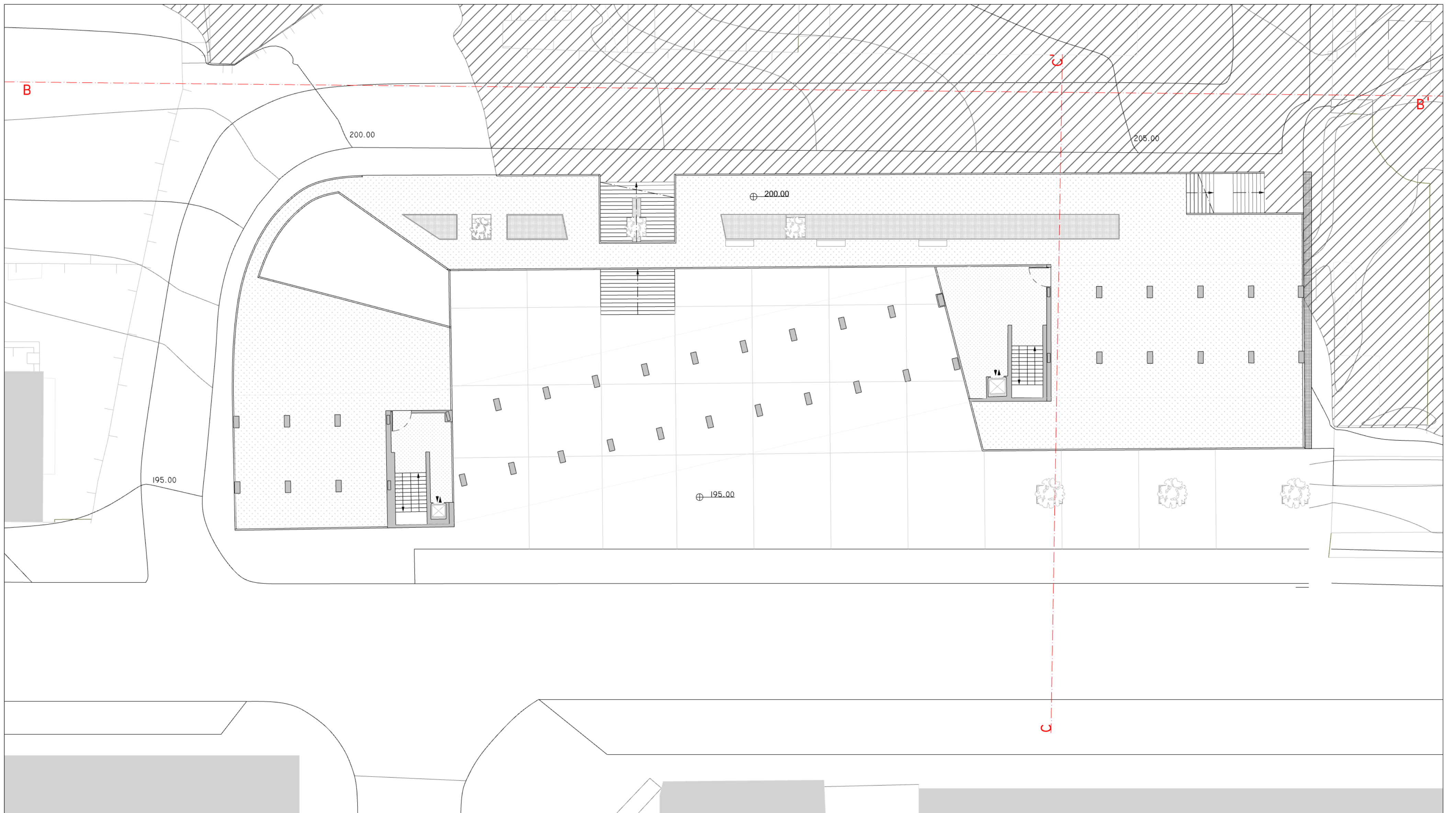


ALÇADO AA' - RUA DR. FÉLIX ALVES PEREIRA

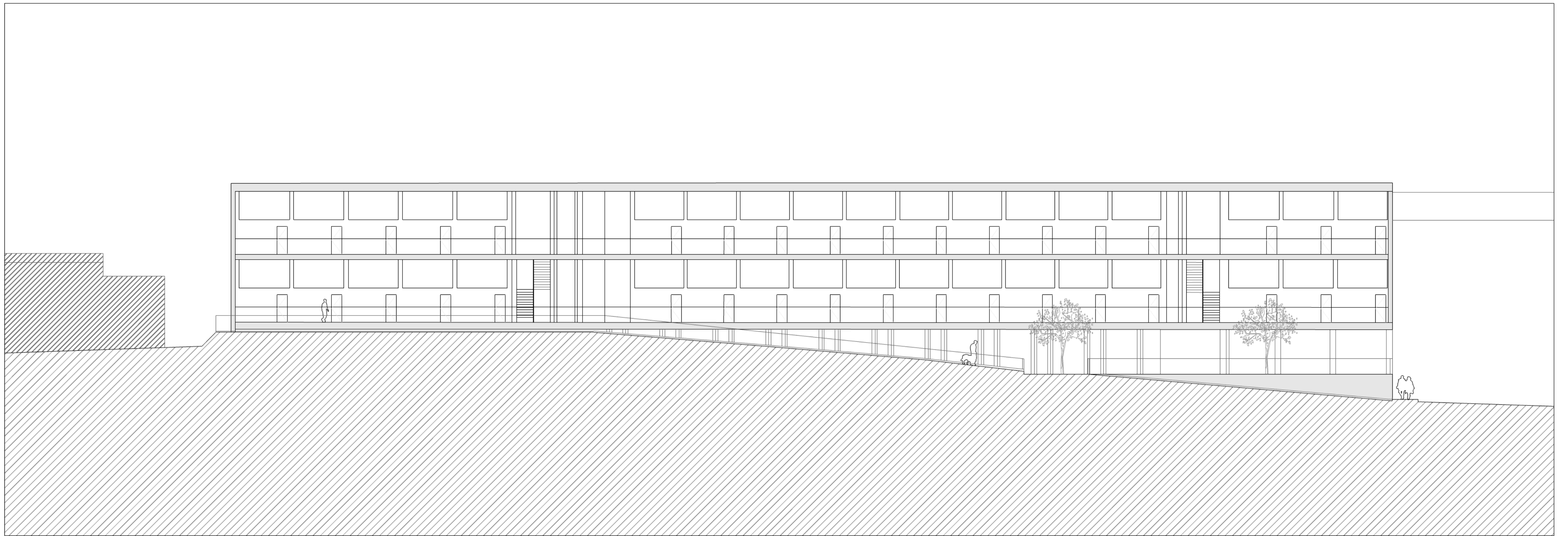


ALÇADO DD'

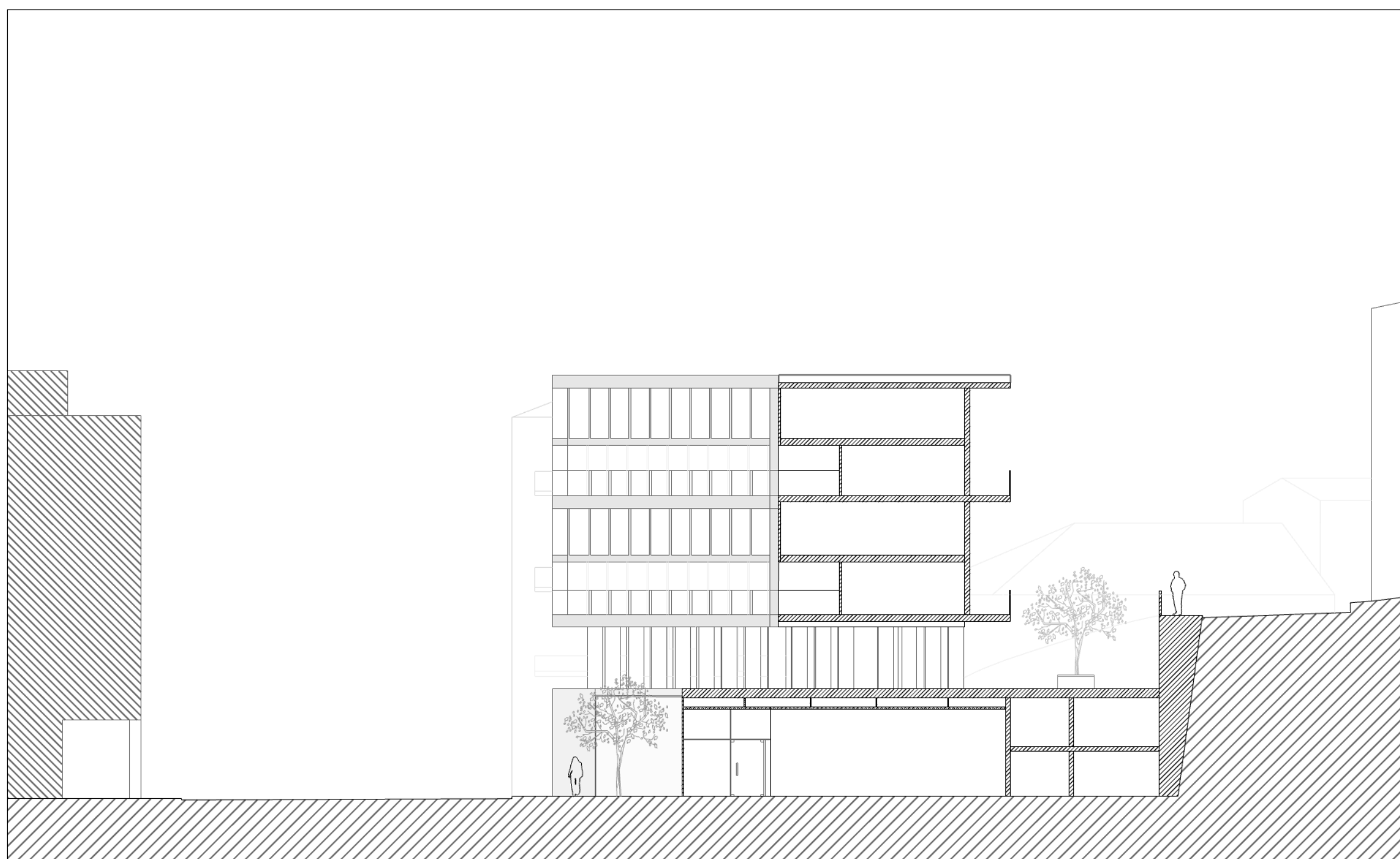




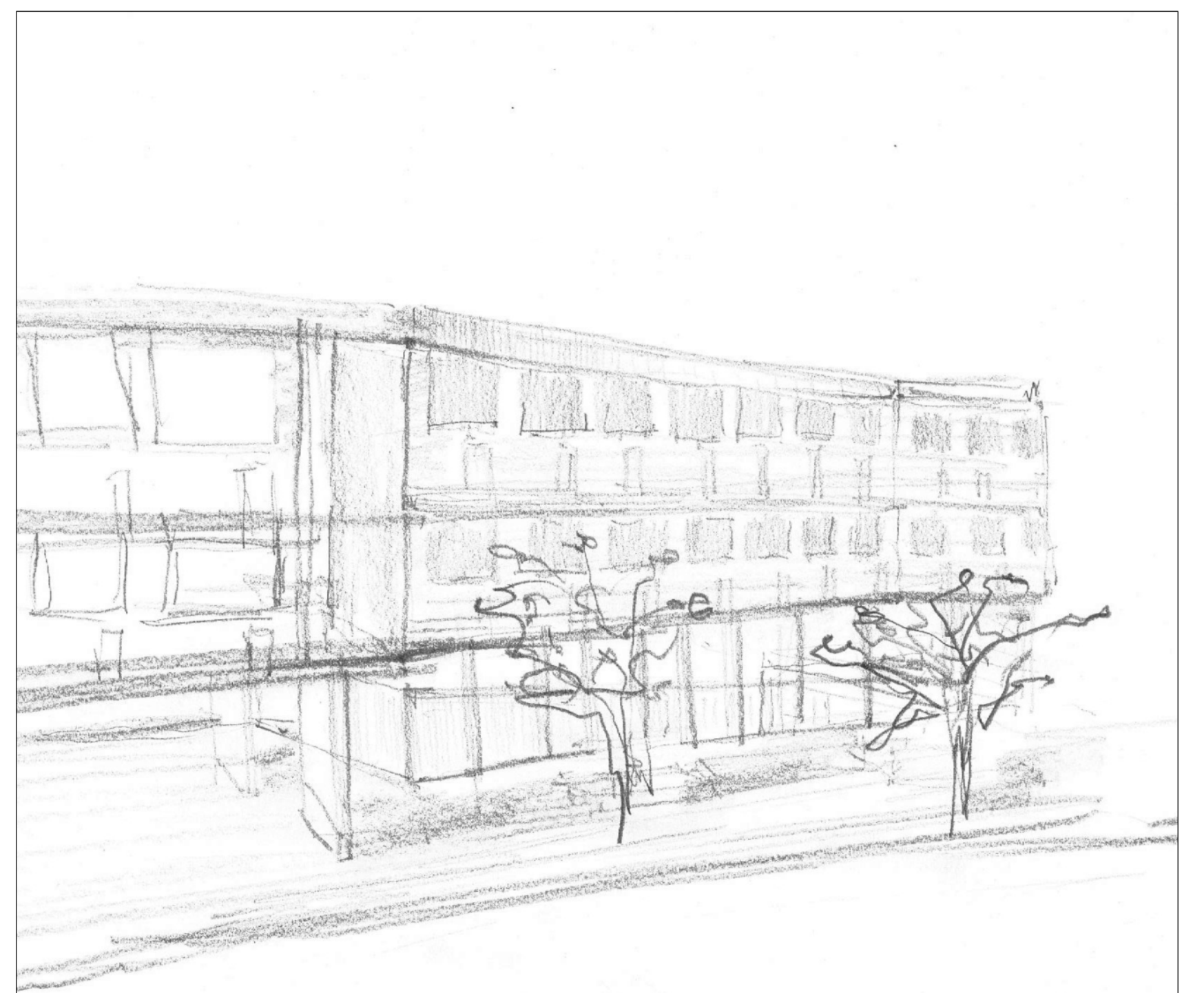
PLANTA PISO TIPO - COTA 201

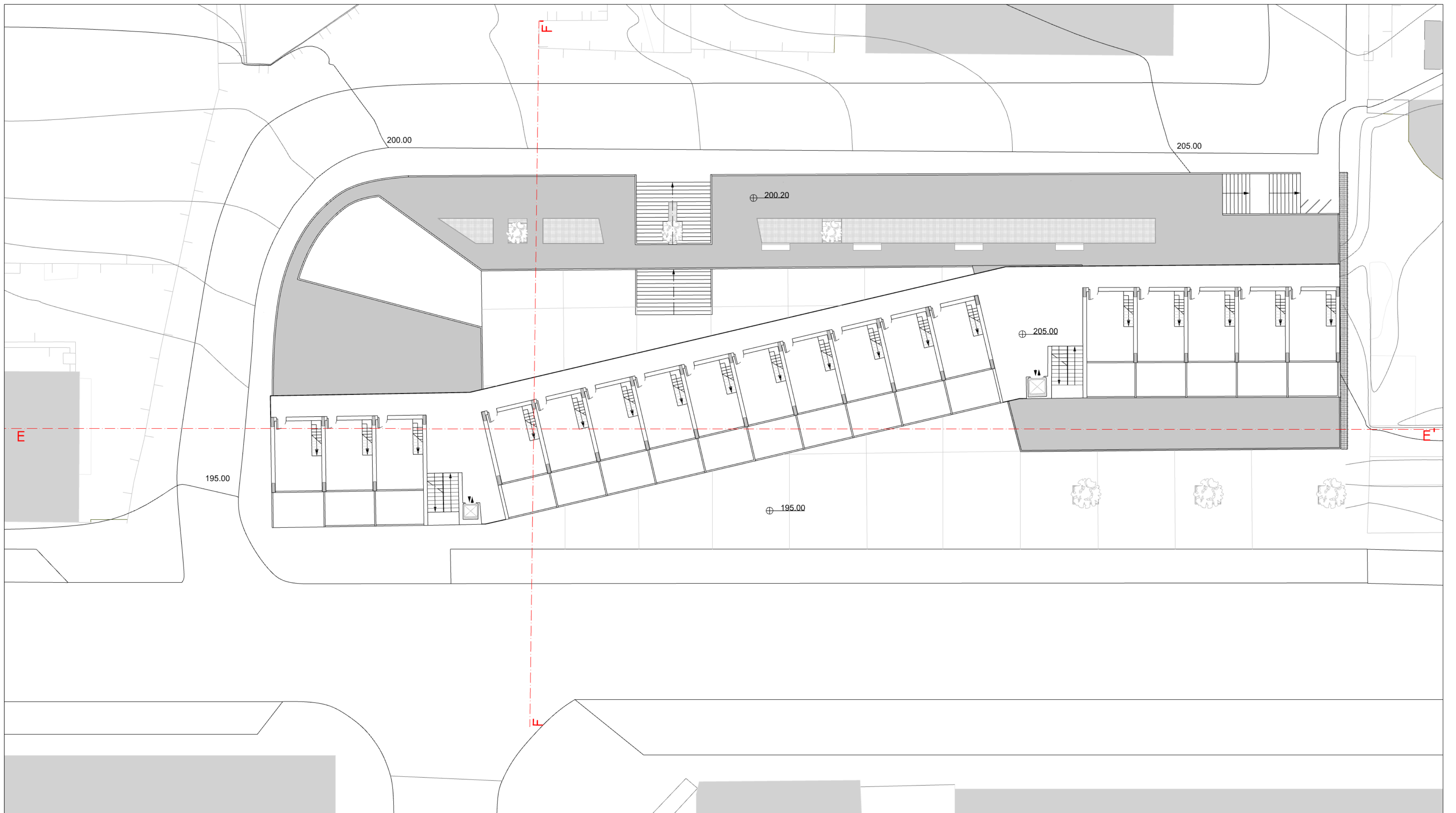


ALÇADO BB' - RUA MIRA SINTRA

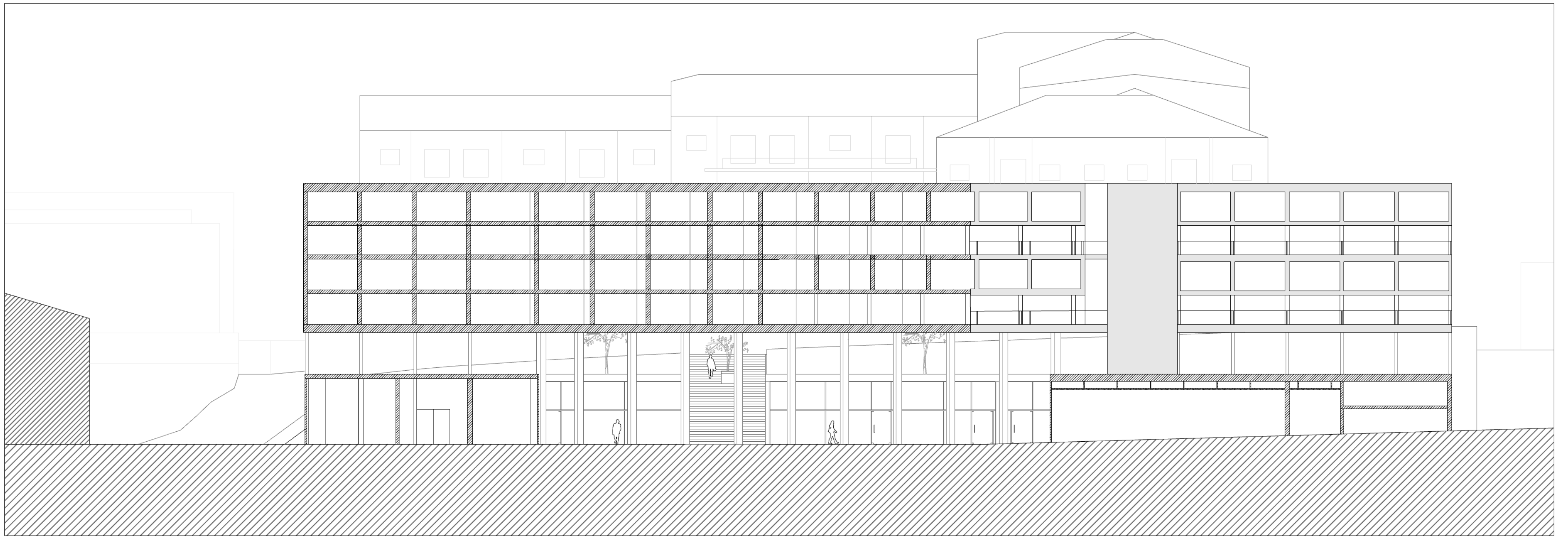


ALÇADO CC'

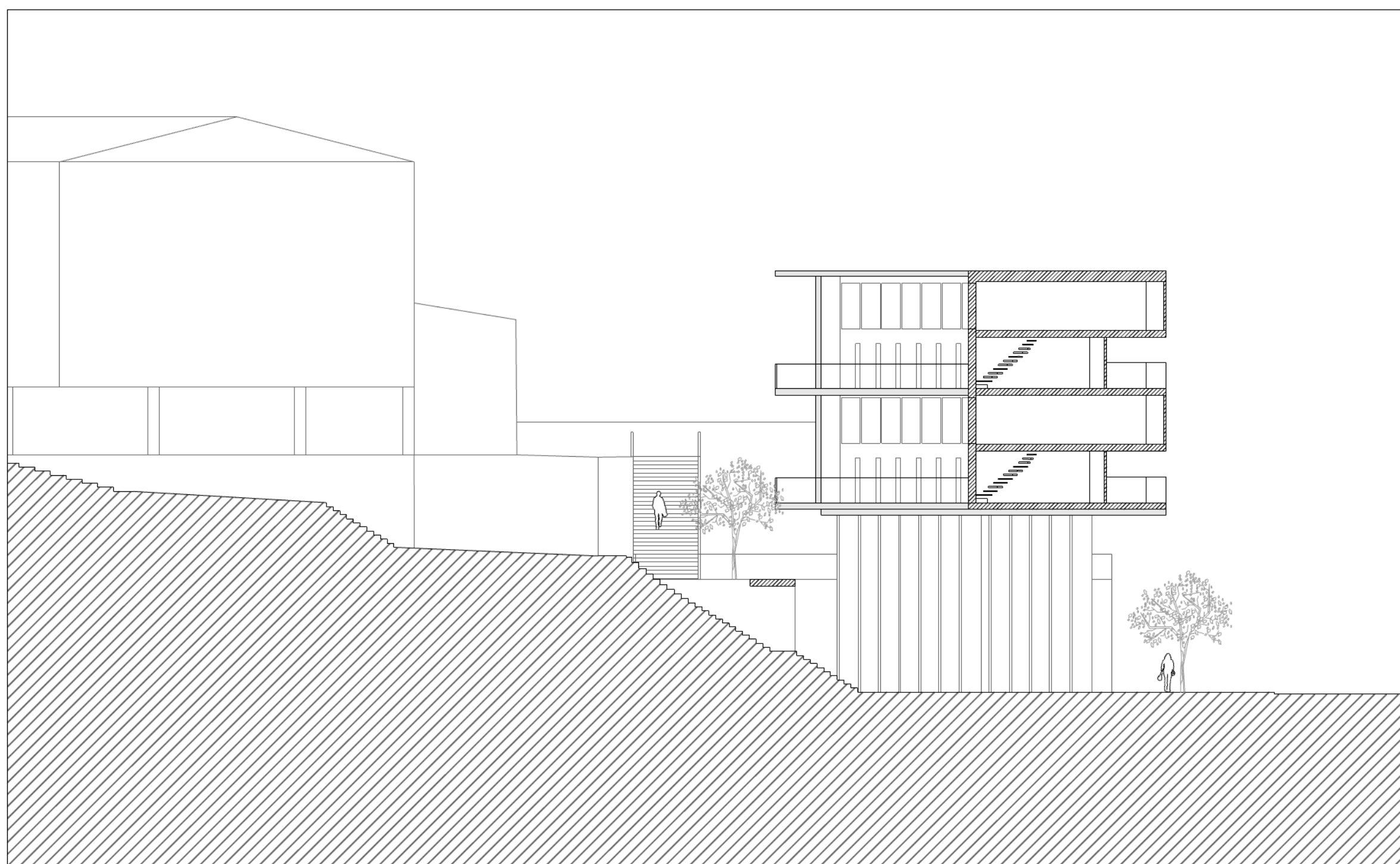




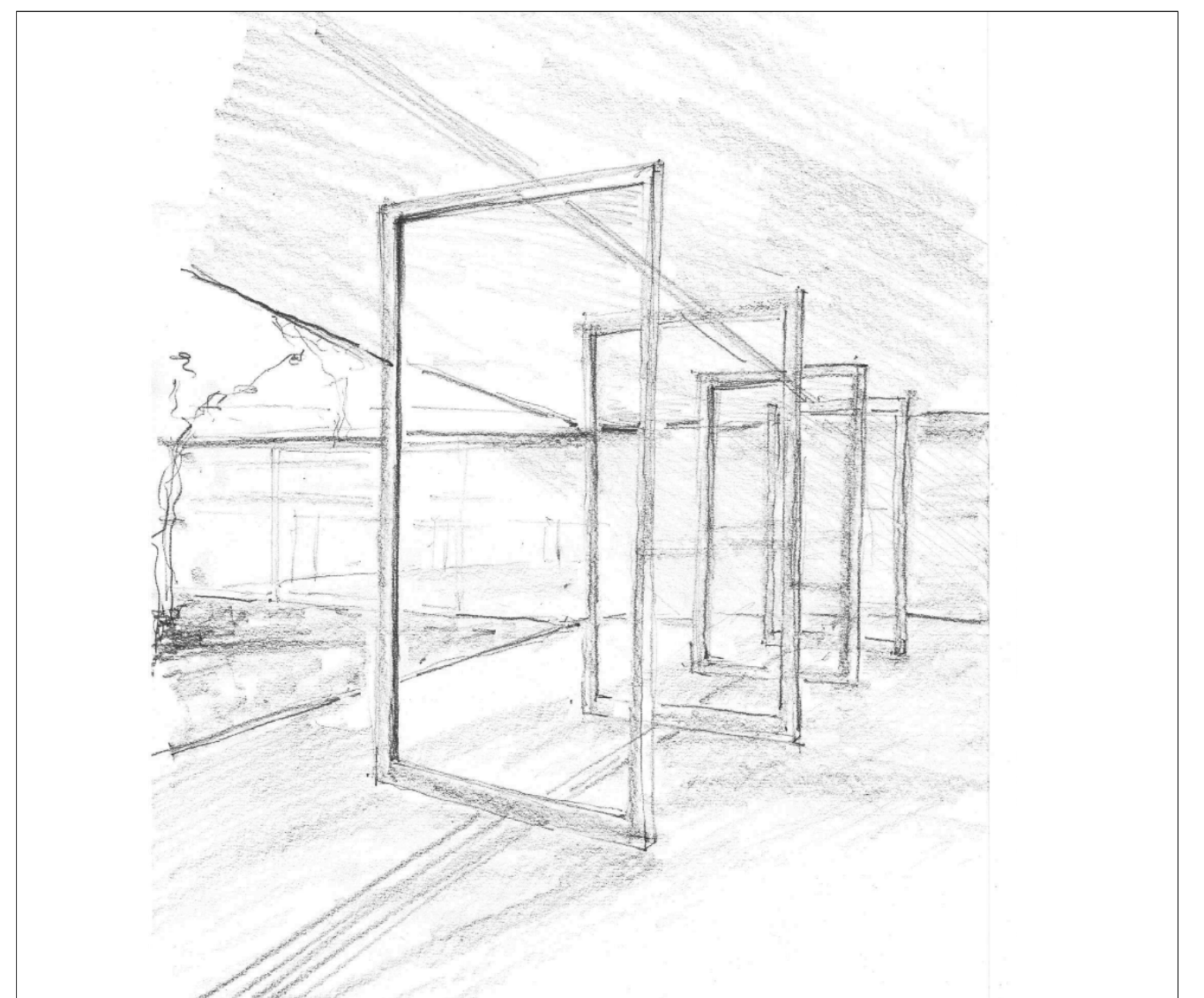
PLANTA PISO TIPO - COTA 210

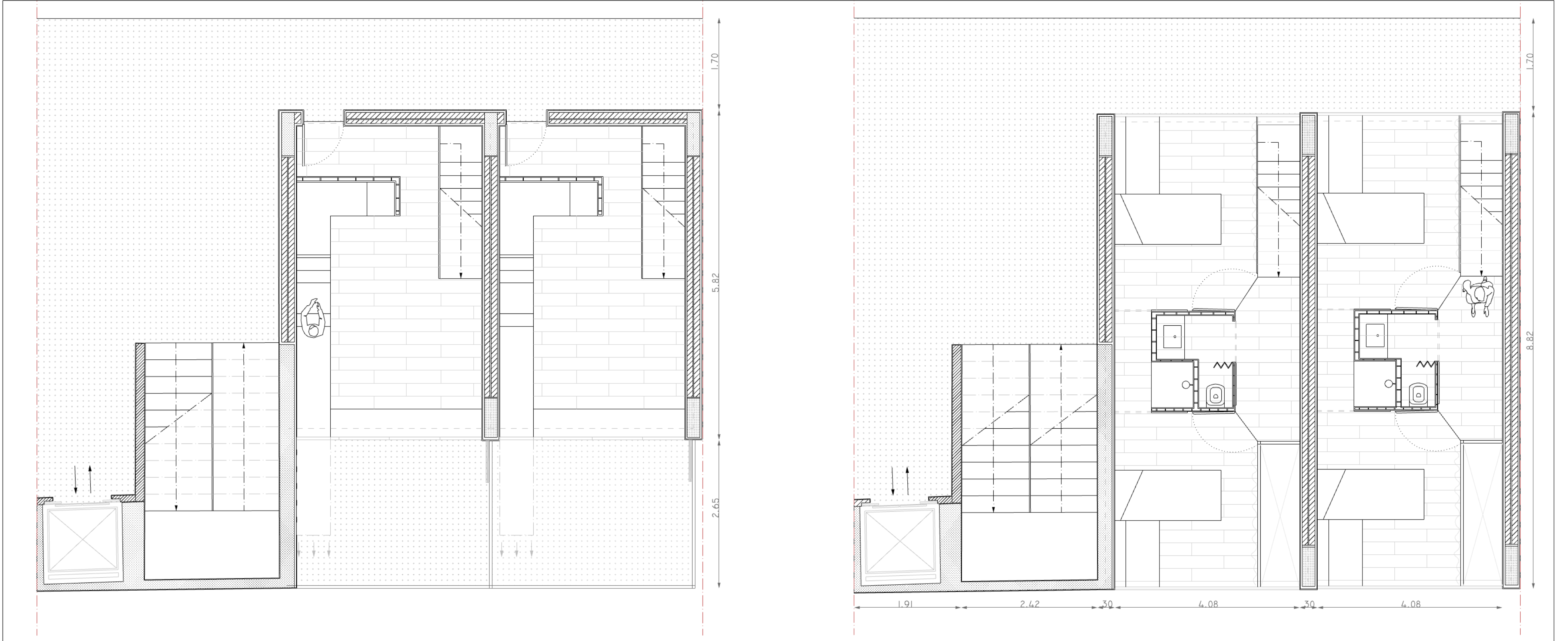


CORTE EE' - RUA DR. FÉLIX ALVES PEREIRA



CORTE FF'





PLANTA 1/50

