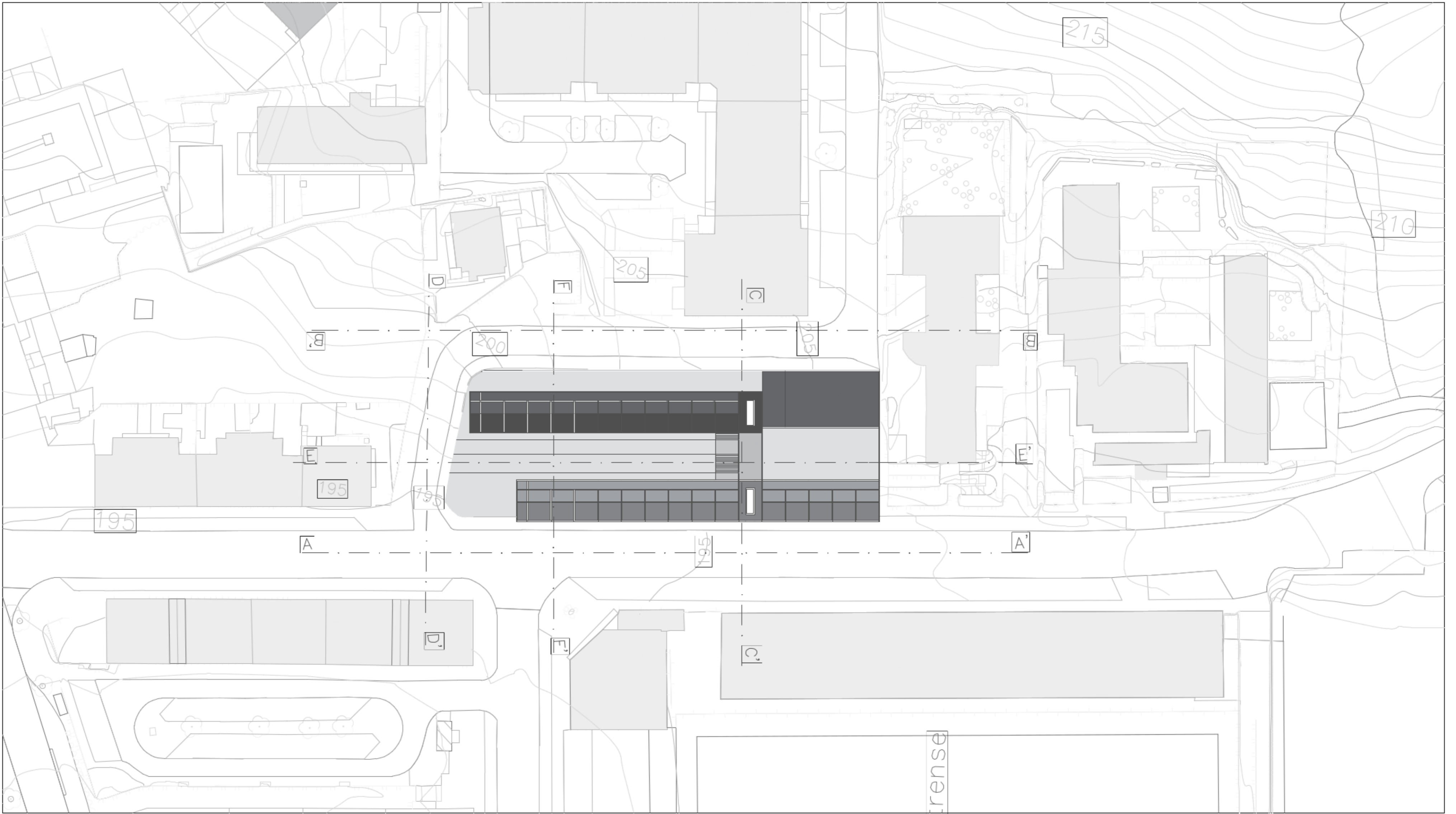


# EXERCÍCIO 3

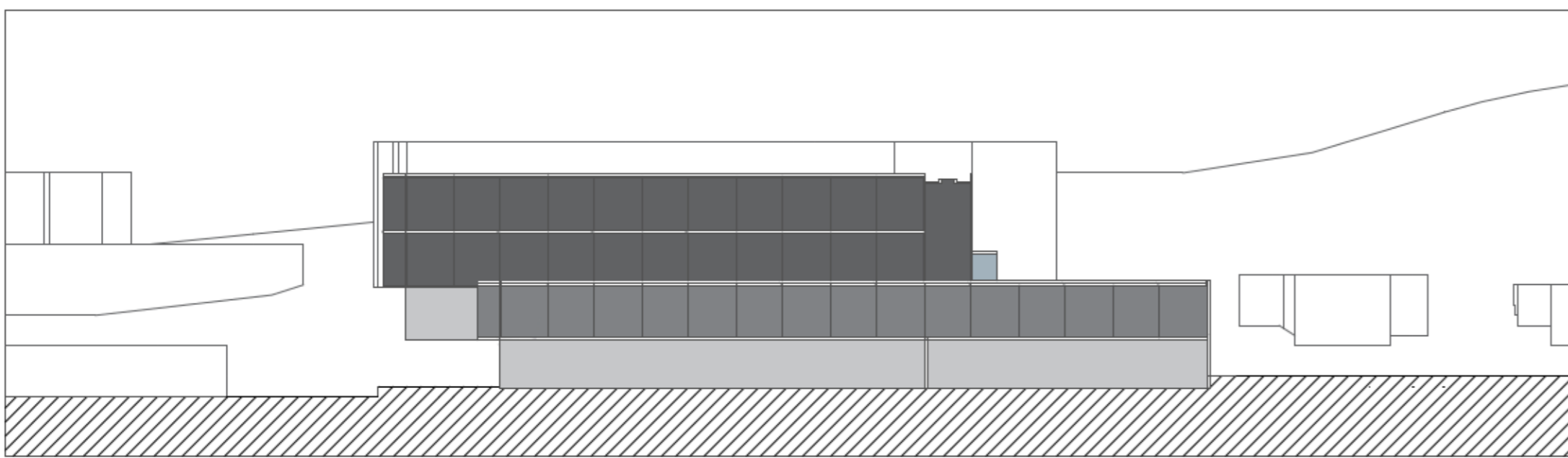
AGREGAÇÃO EM CONTEXTO | esc. 1/500  
Portela de Sintra . Sintra

# 01

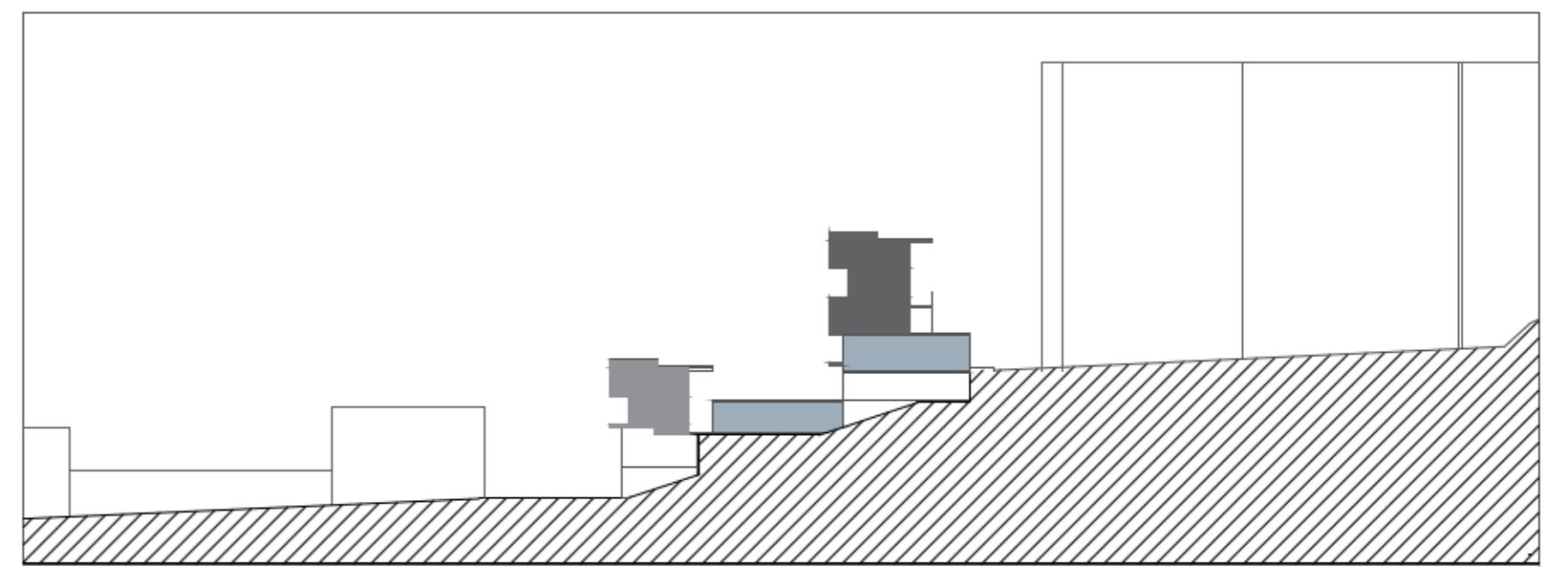
Laboratório de Projecto II . MIARQ  
Turma 3B . 2020/2021  
Margarida Coimbra . n° 20181472



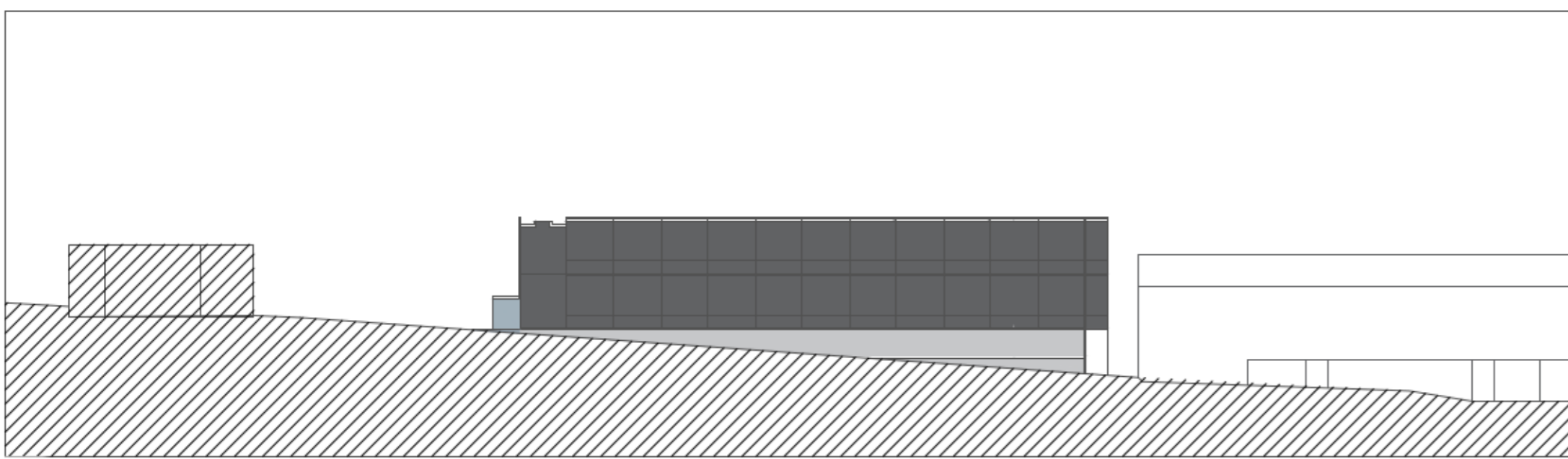
PLANTA DE APRESENTAÇÃO



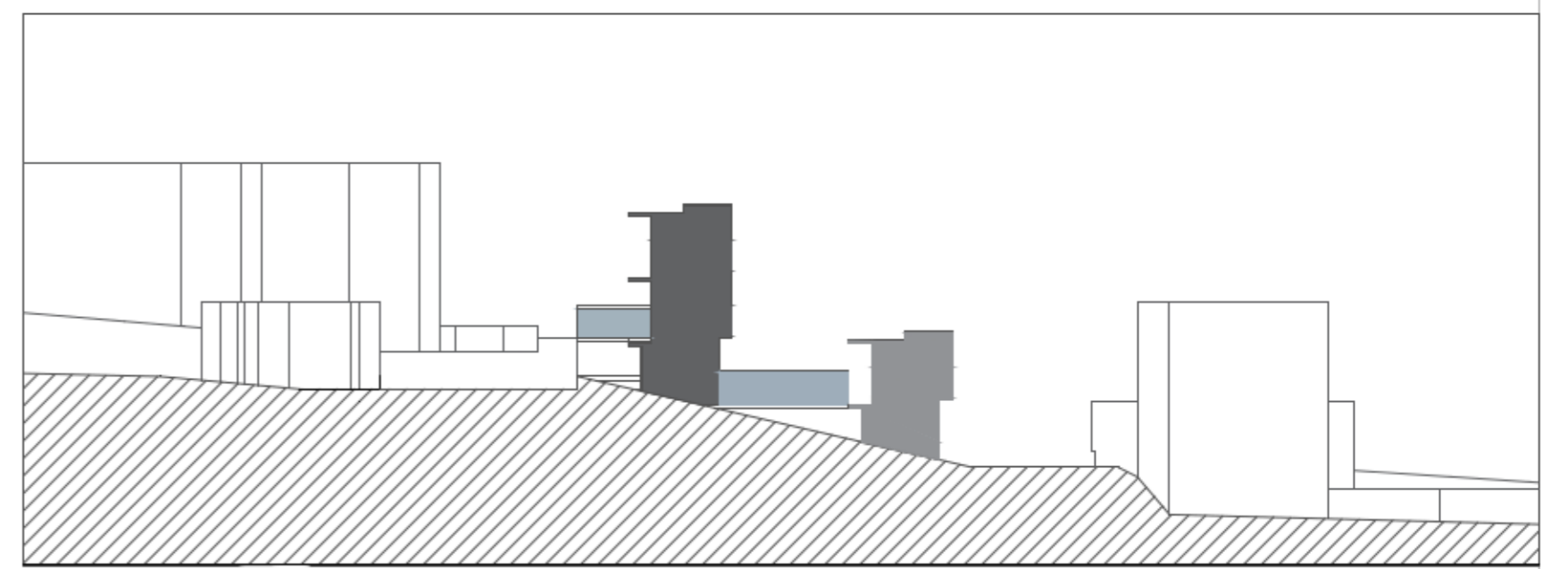
PERFIL AA' - Rua Dr. Félix Alves Pereira



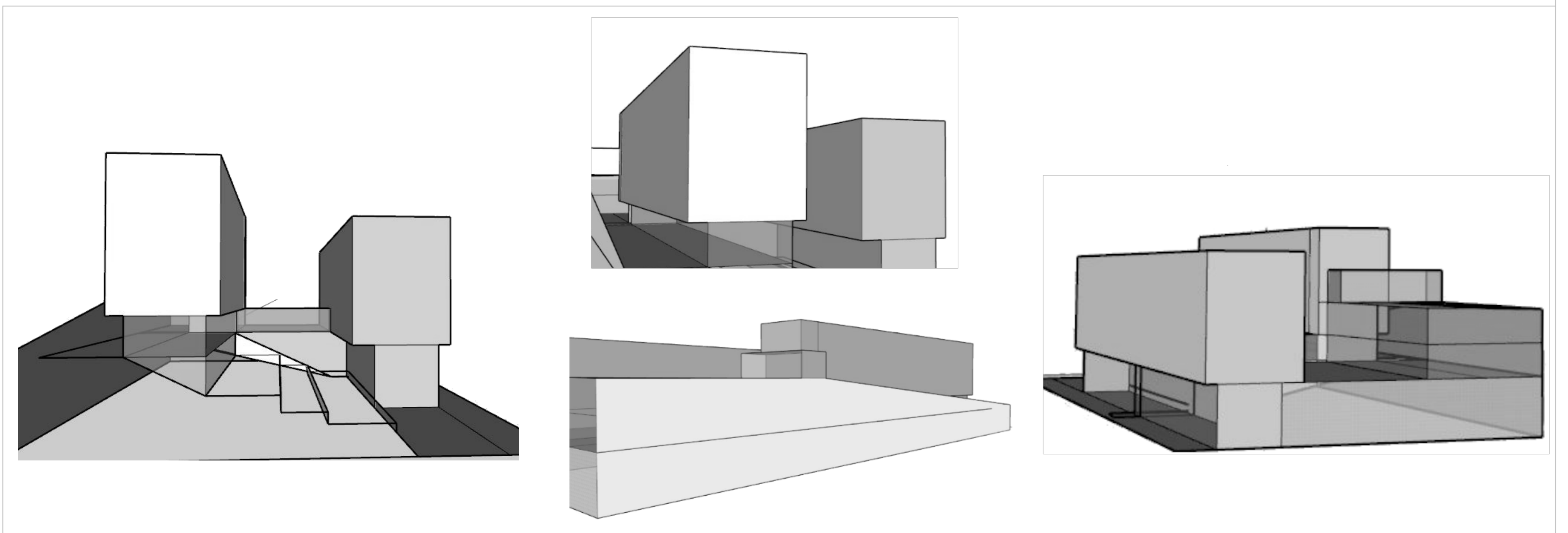
PERFIL CC'



PERFIL BB' - Rua Mira Sintra



PERFIL DD'



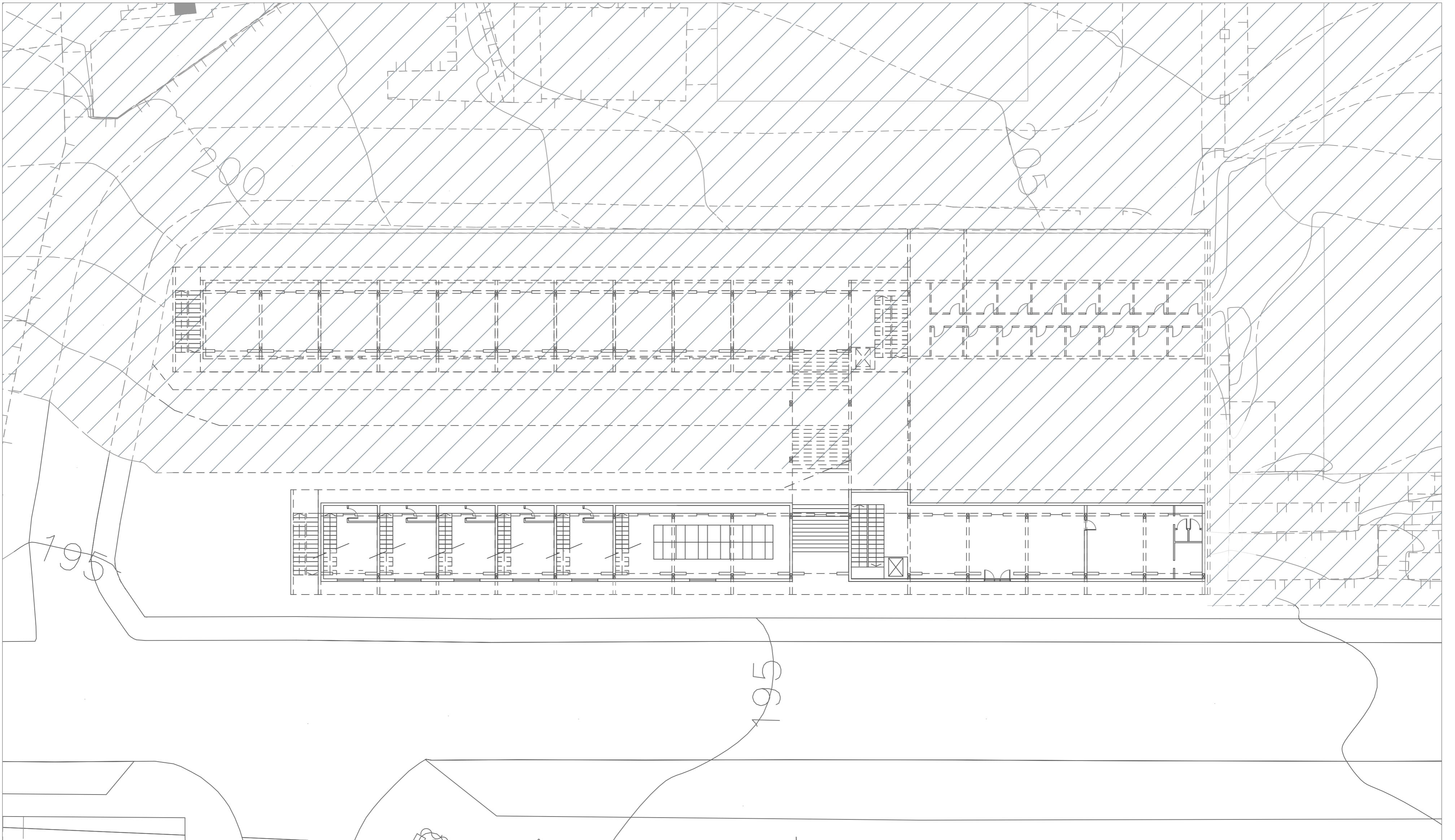
ESQUEMAS / PERSPECTIVAS / TEXTO

# EXERCÍCIO 3

AGREGAÇÃO EM CONTEXTO | esc. 1/200  
Portela de Sintra . Sintra

# 02

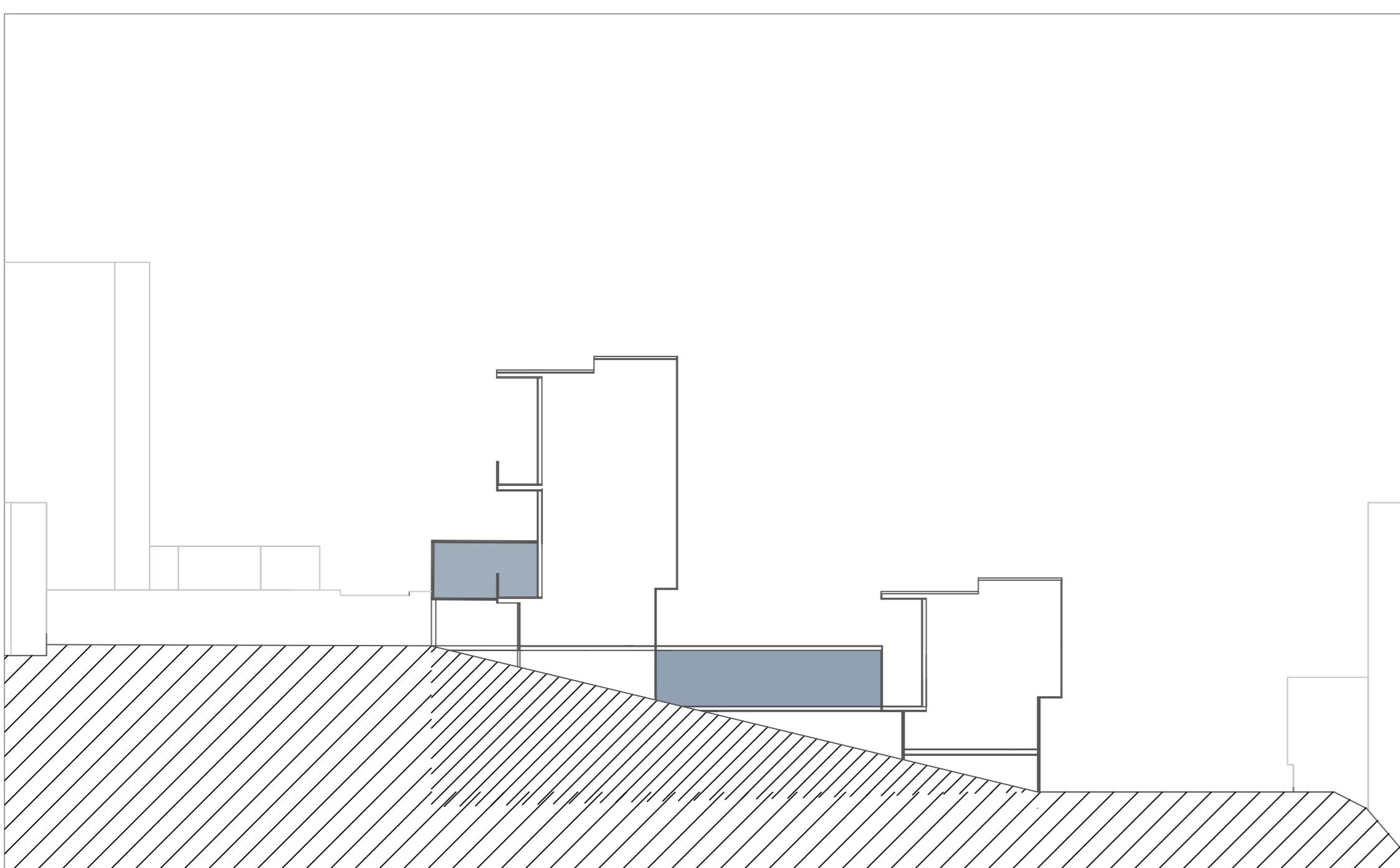
Laboratório de Projecto II . MIARQ  
Turma 3B . 2020/2021  
Margarida Coimbra . nº 20181472



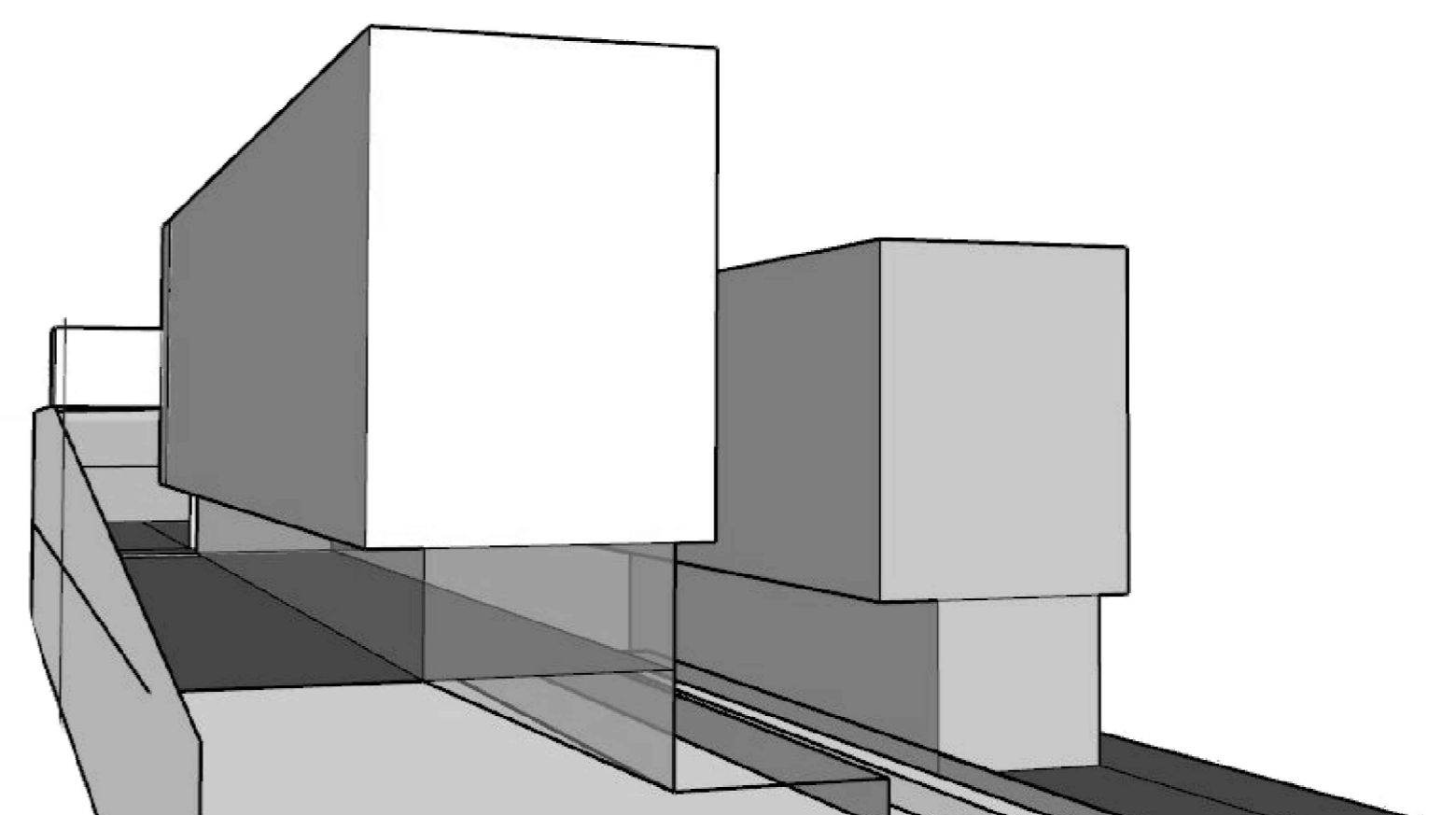
PLANTA PISO TÉRREO COTA 195



ALÇADO AA' - Rua Dr. Félix Alves Pereira



ALÇADO DD'



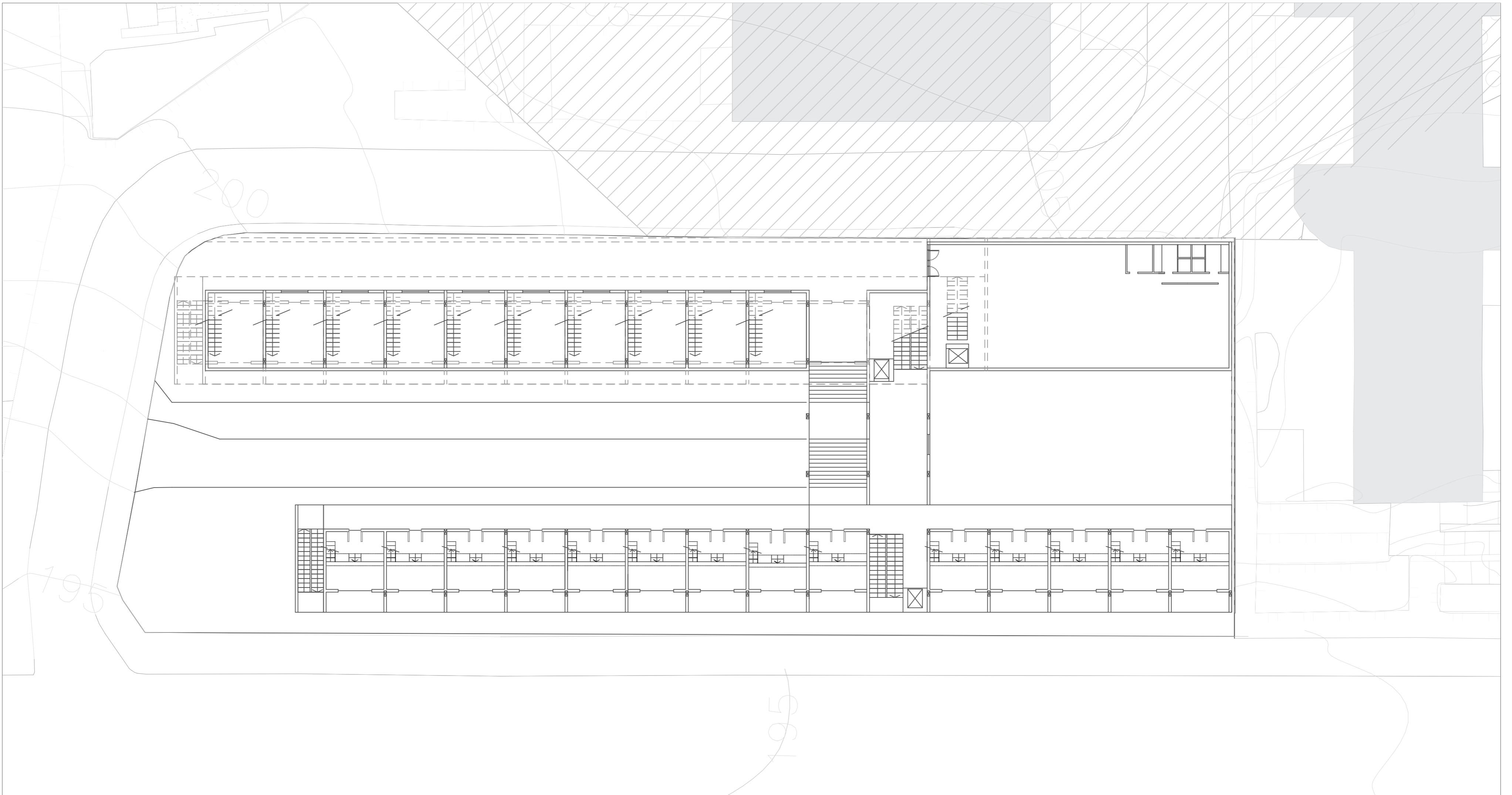
ESQUEMAS / PERSPECTIVAS / TEXTO

# EXERCÍCIO 3

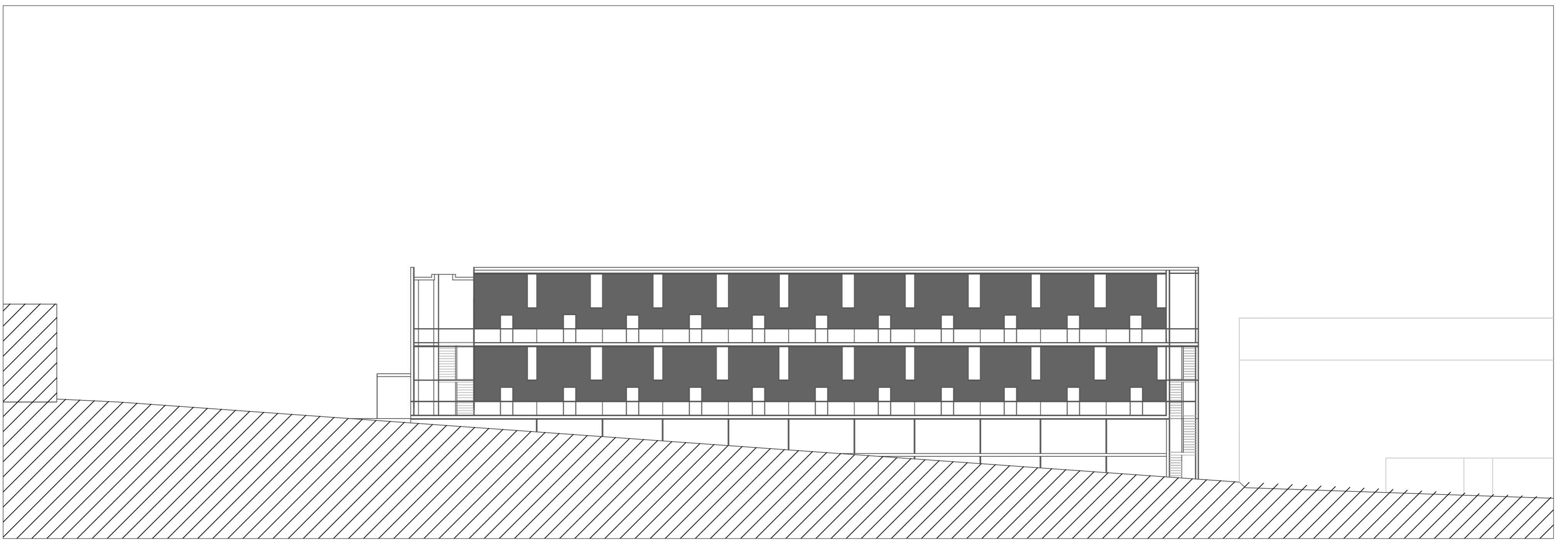
AGREGAÇÃO EM CONTEXTO | esc. 1/200  
Portela de Sintra . Sintra

# 03

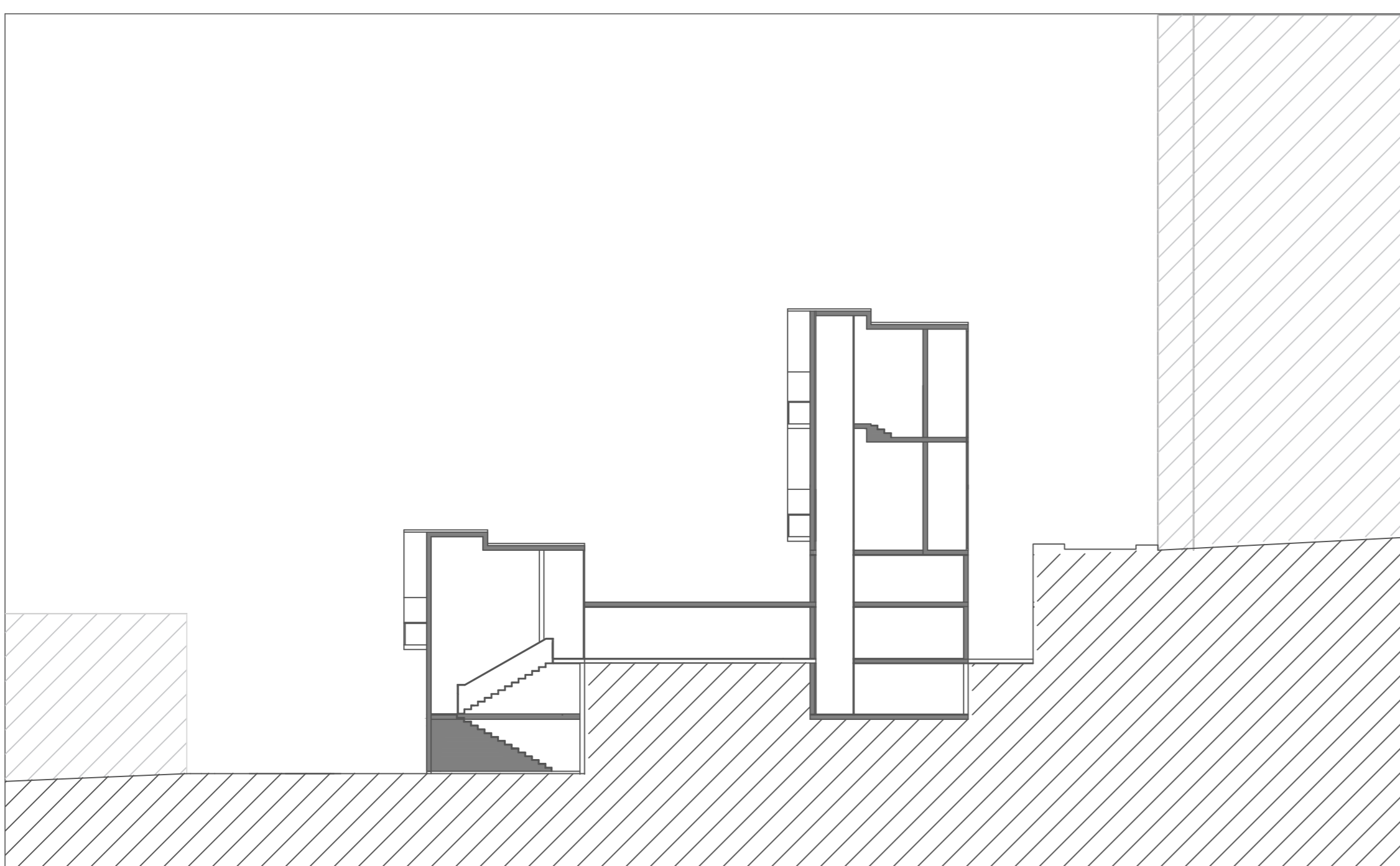
Laboratório de Projecto II . MIAF  
Turma 3B . 2020/2021  
Margarida Coimbra . nº 2018147



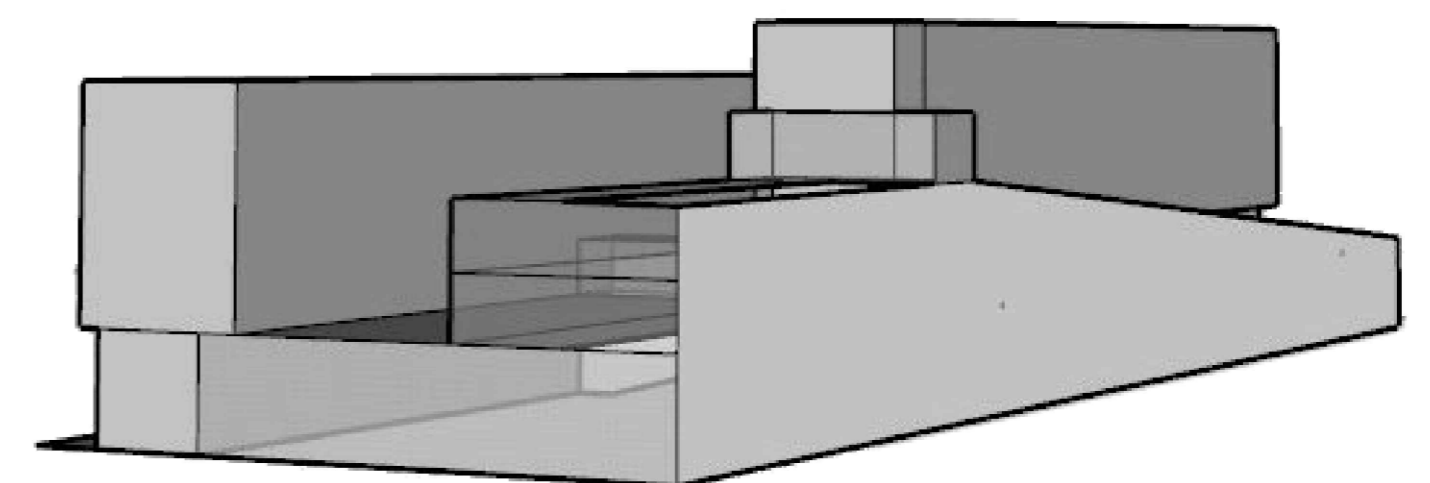
PLANTA PISO TIPO COTA 202.5



ALÇADO BB' - Rua Mira Sintra



CORTE CC'



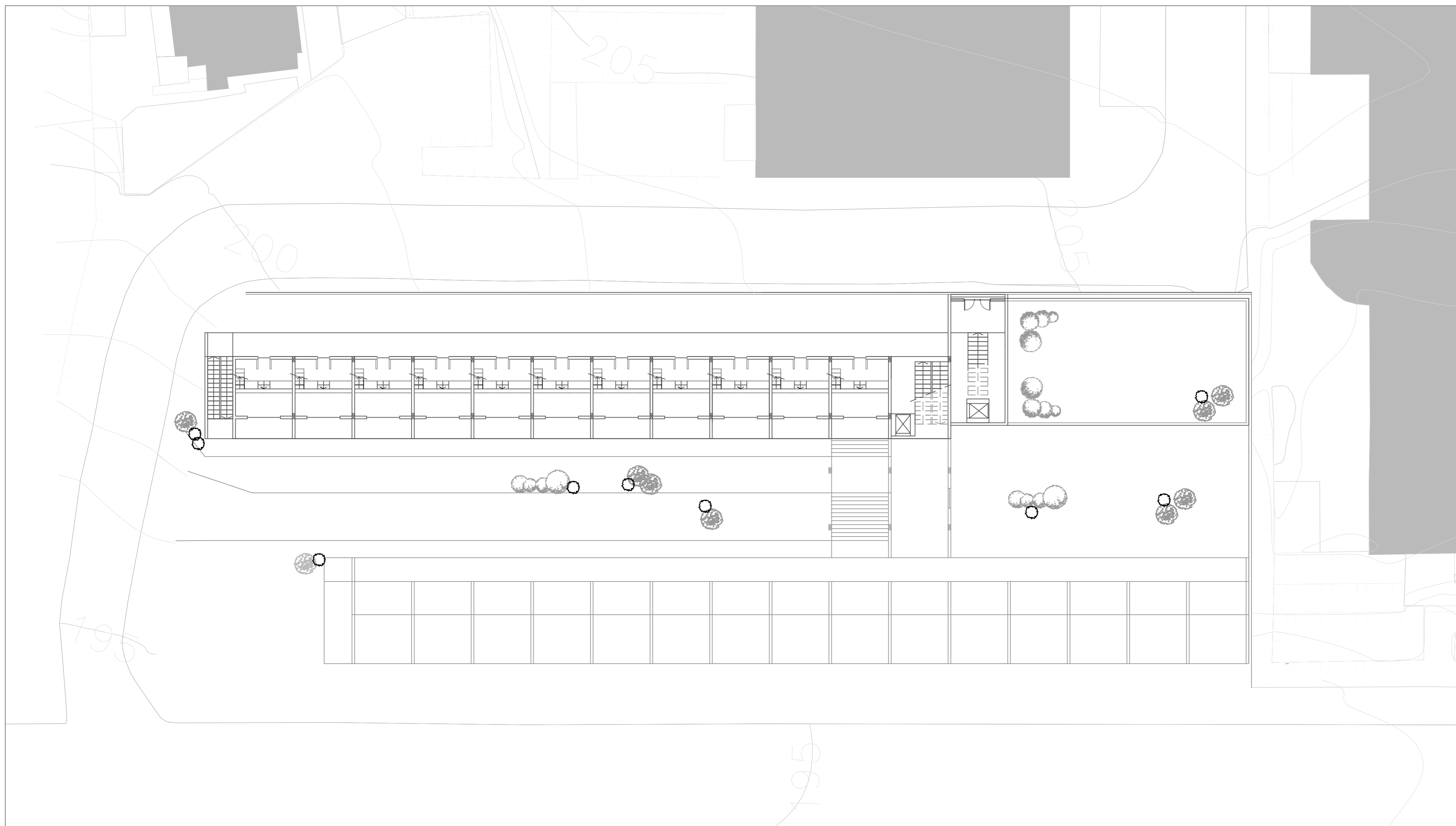
ESQUEMAS / PERSPECTIVAS / TEXTO

# EXERCÍCIO 3

AGREGAÇÃO EM CONTEXTO | esc. 1/200  
Portela de Sintra . Sintra

# 04

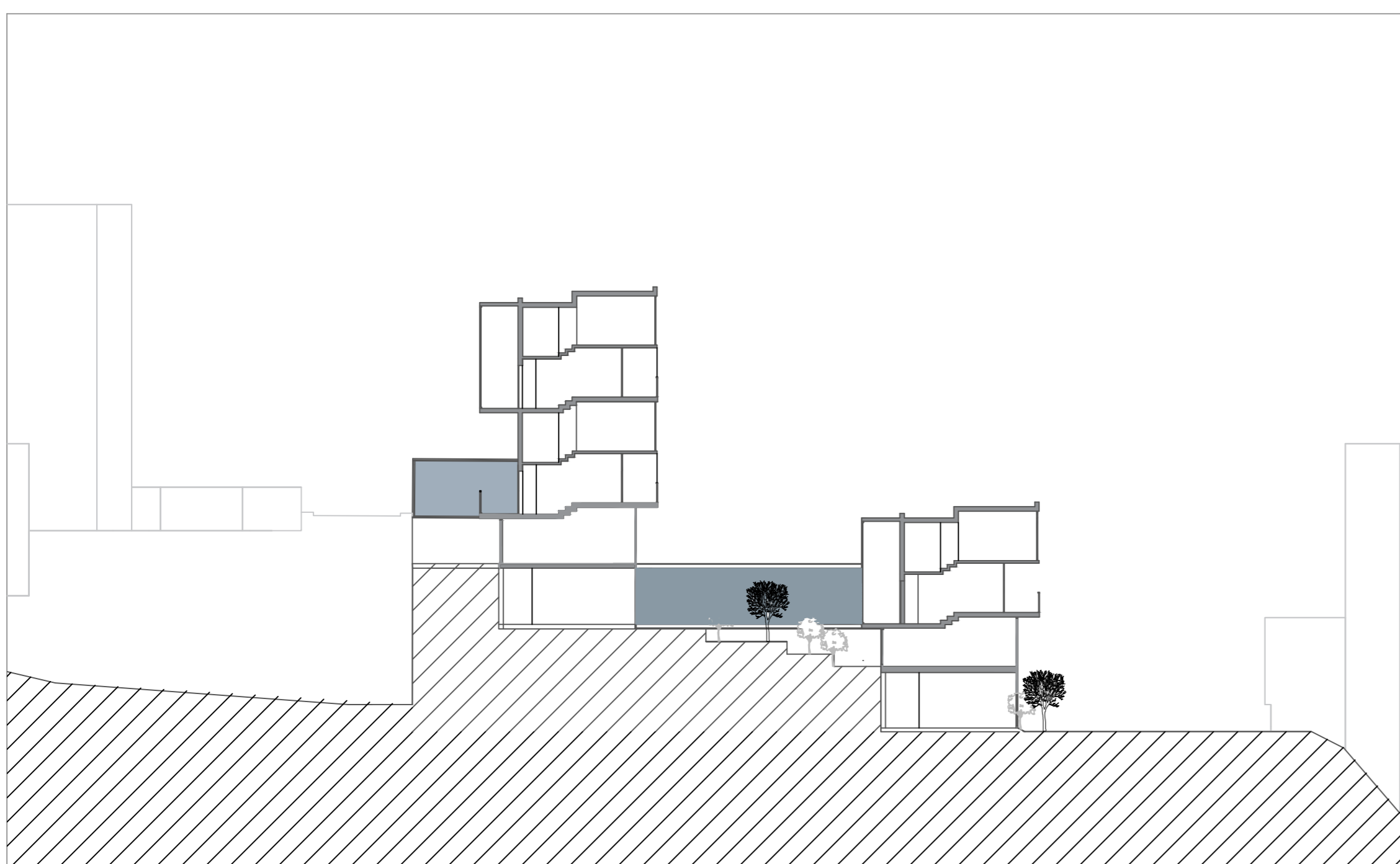
Laboratório de Projecto II . MIARQ  
Turma 3B . 2020/2021  
Margarida Coimbra . nº 20181472



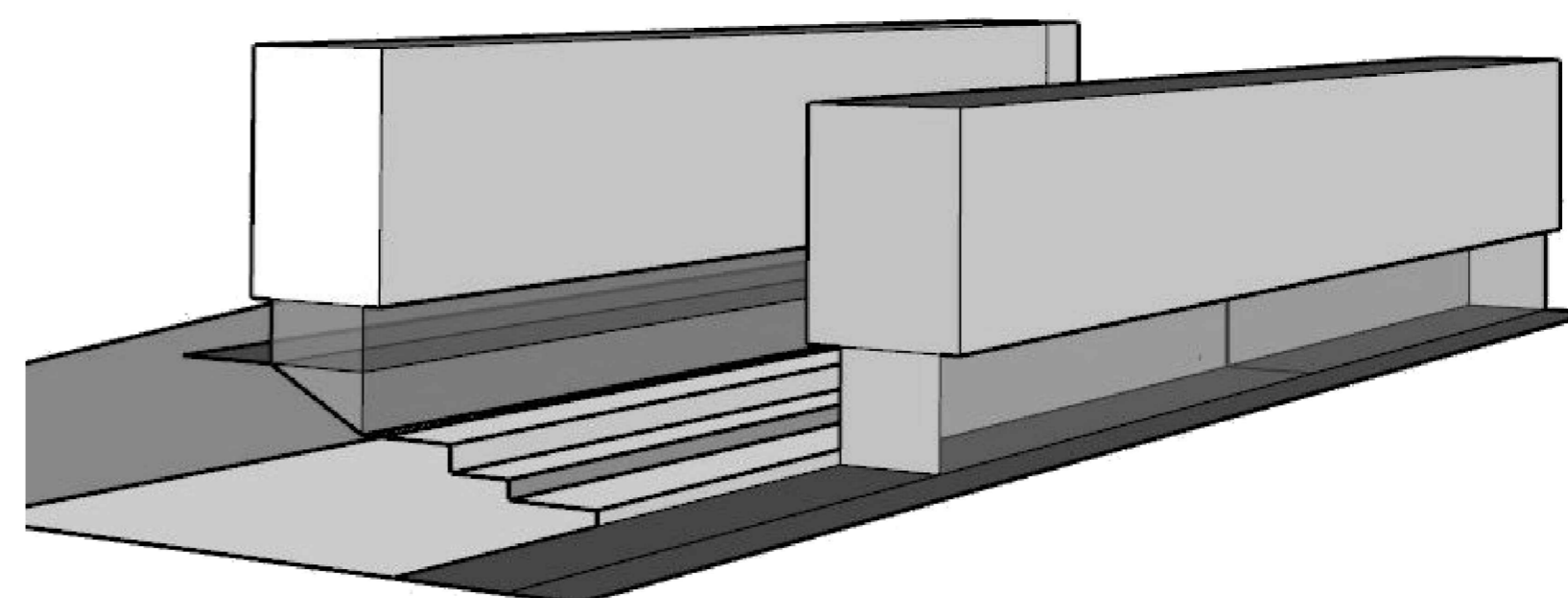
PLANTA PISO TIPO COTA 205



CORTE EE'



CORTE FF'



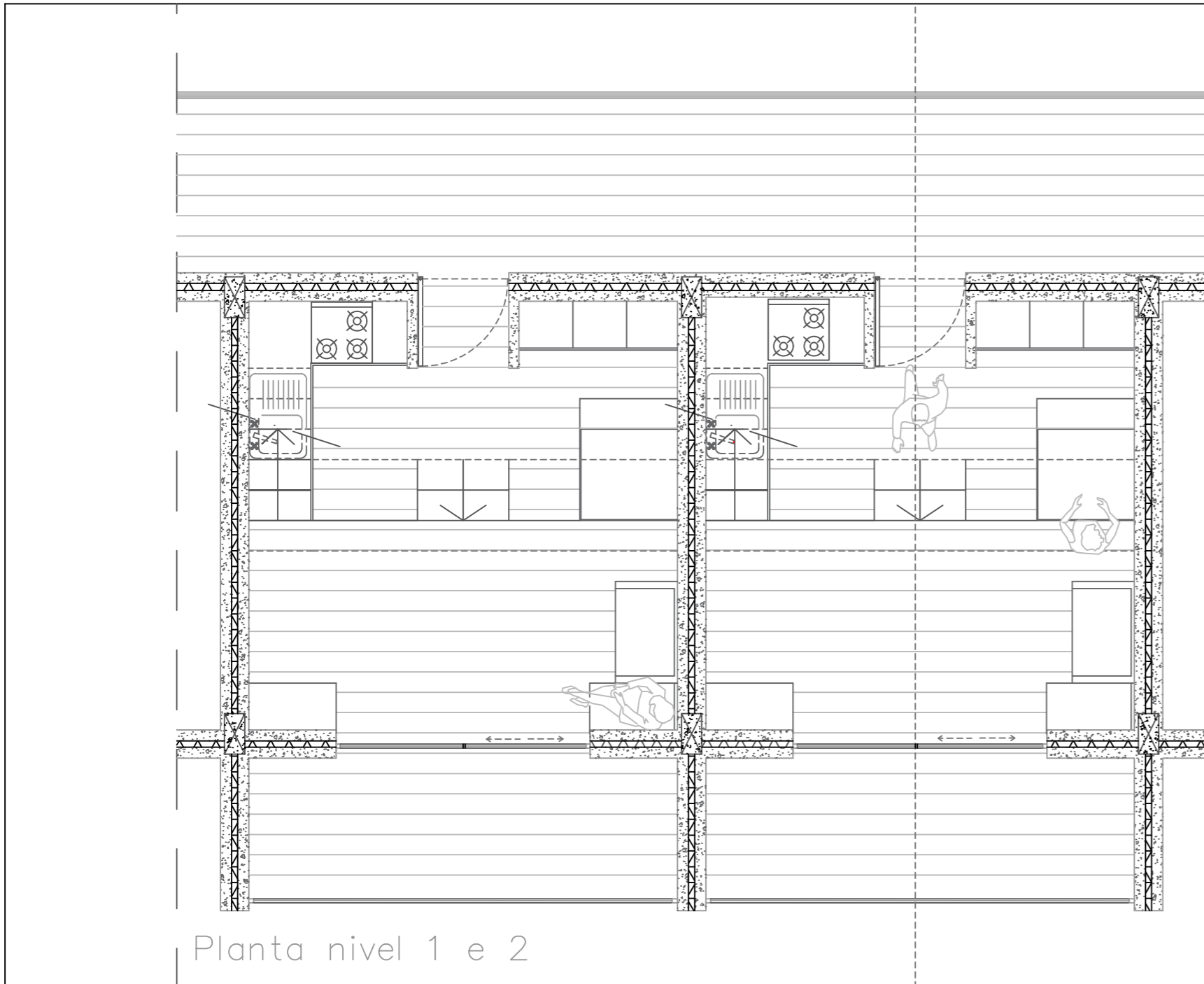
ESQUEMAS / PERSPECTIVAS / TEXTO

EXERCÍCIO 3

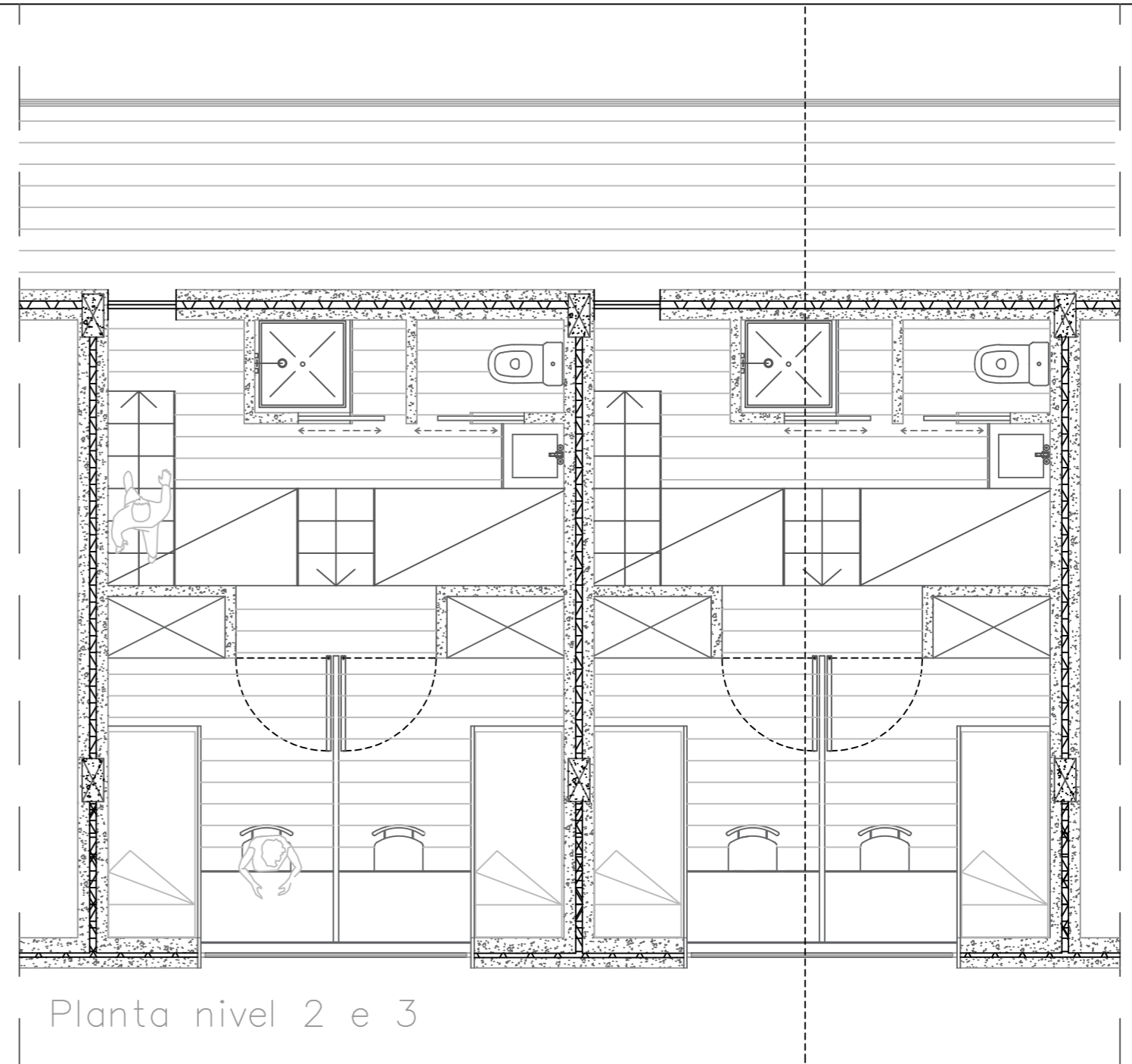
AGREGAÇÃO EM CONTEXTO | esc. 1/50  
Portela de Sintra . Sintra

Laboratório de Projecto II . MIARQ  
Turma 3B . 2020/2021  
Margarida Coimbra . nº 20181472

05

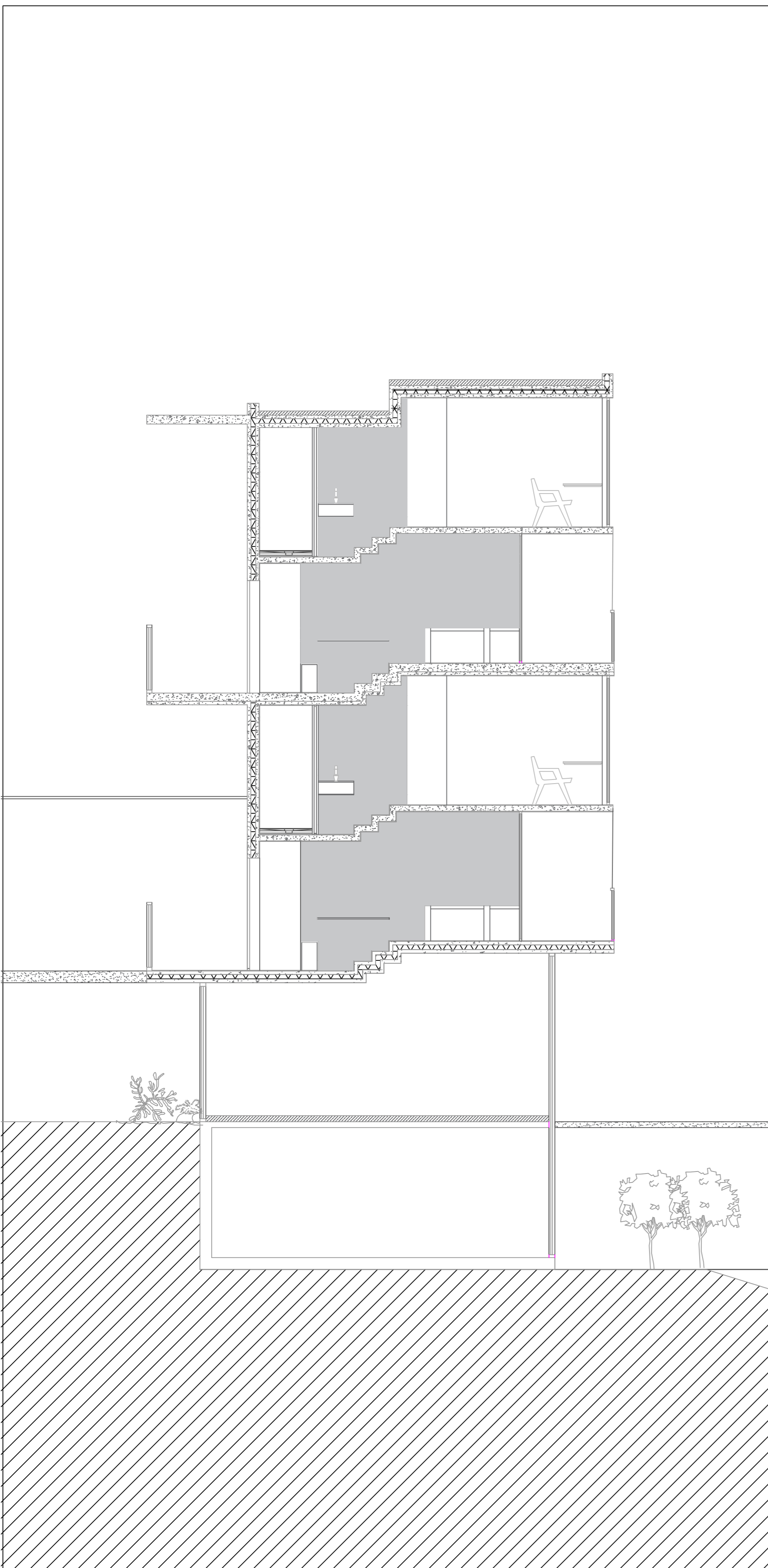


Planta nível 1 e 2

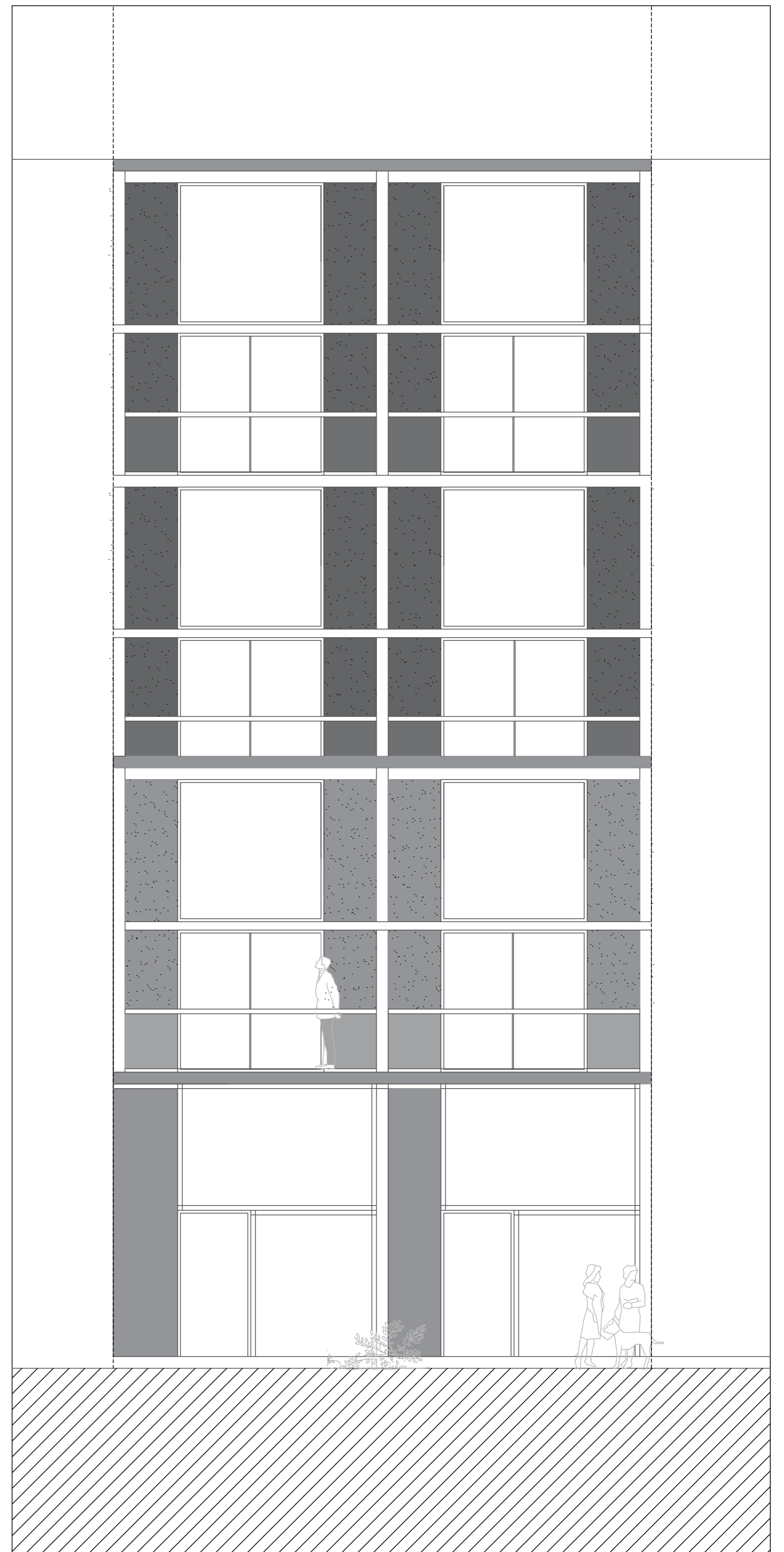


Planta nível 2 e 3

PLANTA | ESC. 1:50



CORTE | ESC. 1:50



ALÇADO | ESC. 1:50