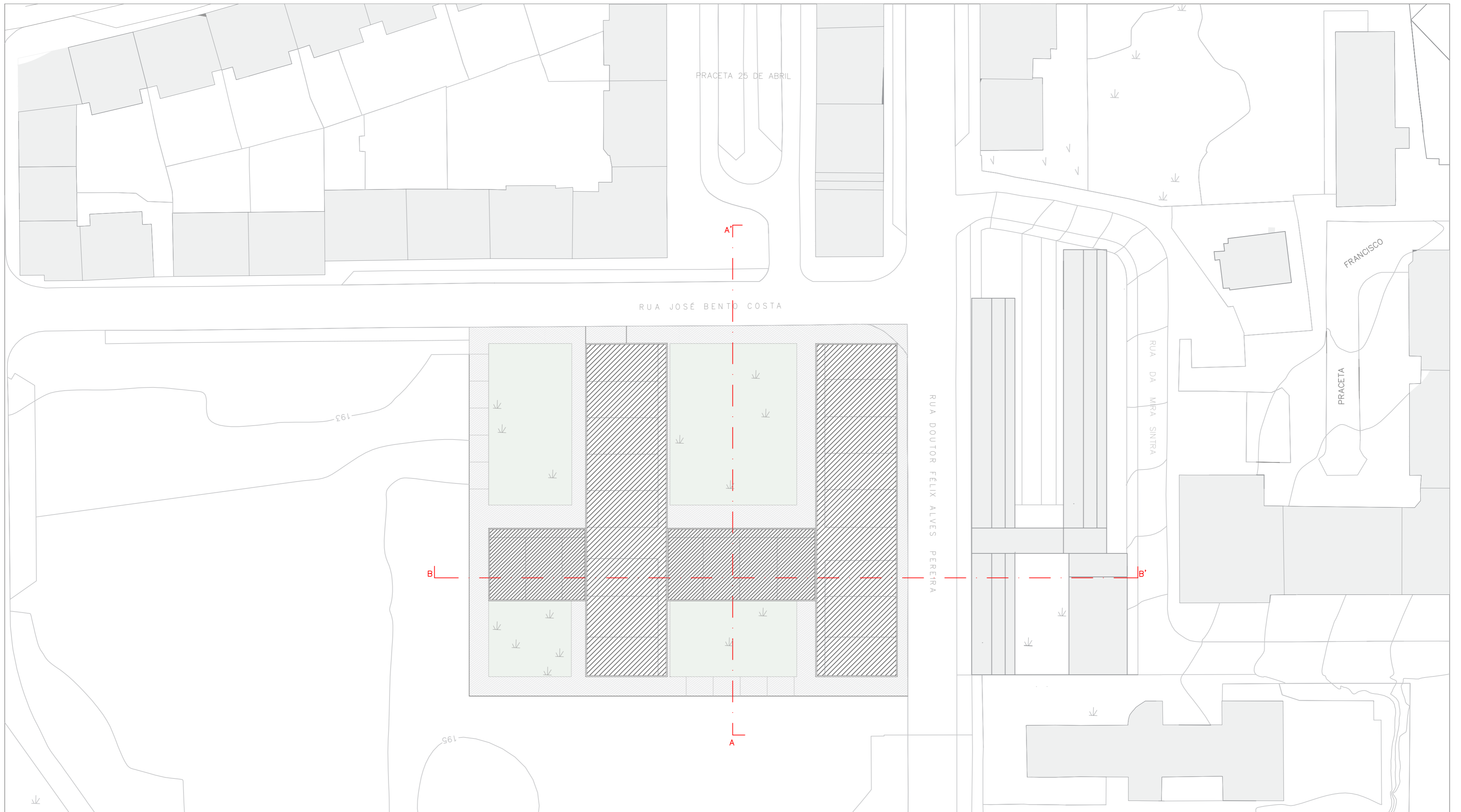


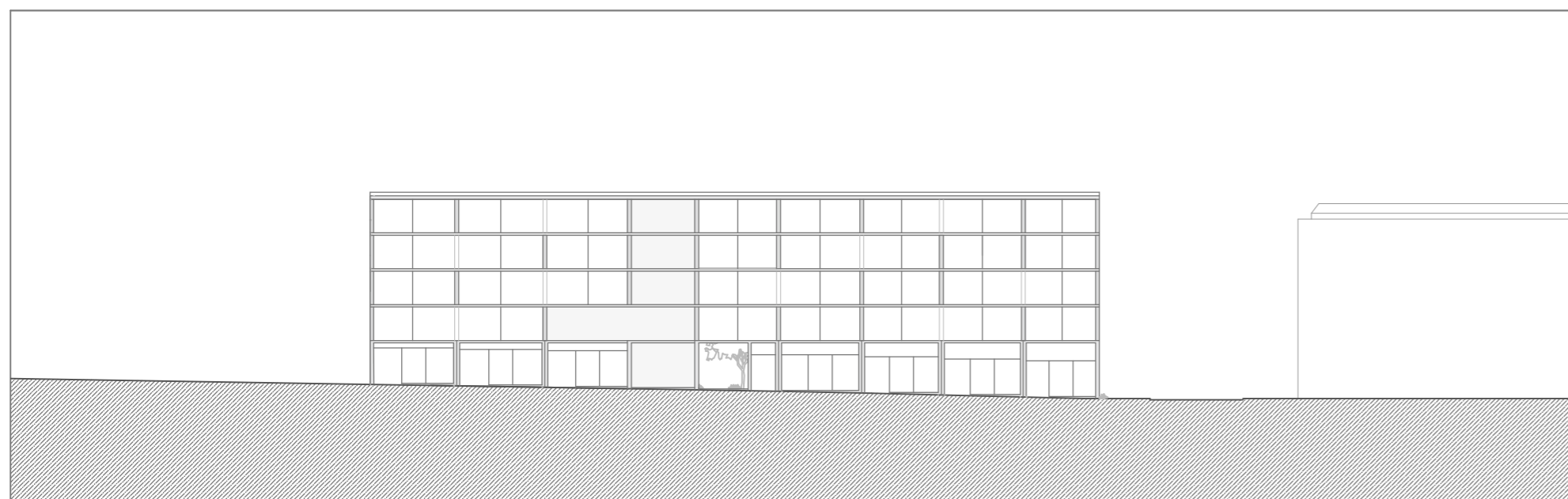
01

HABITAÇÃO COLECTIVA  
UM SENTIDO COLECTIVO DO HABITAR  
esc. 1/500  
Portela de Sintra . Sintra

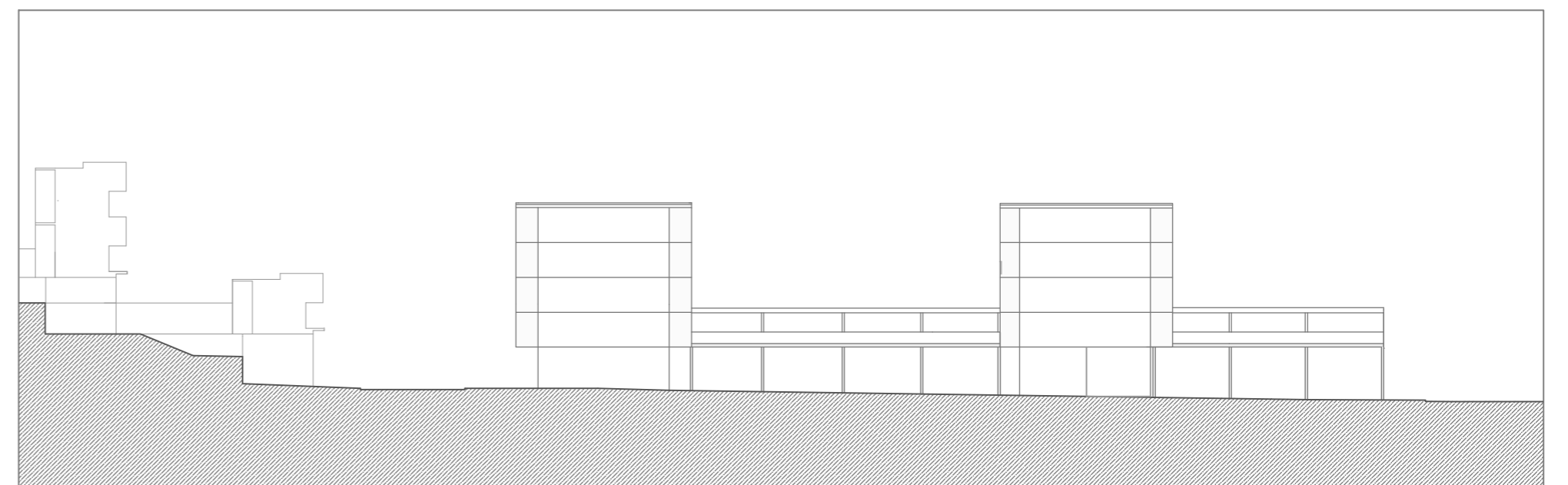
Laboratório de Projecto III . MIINT  
Turma B . 2020/2021  
Margarida Coimbra . nº 20181472



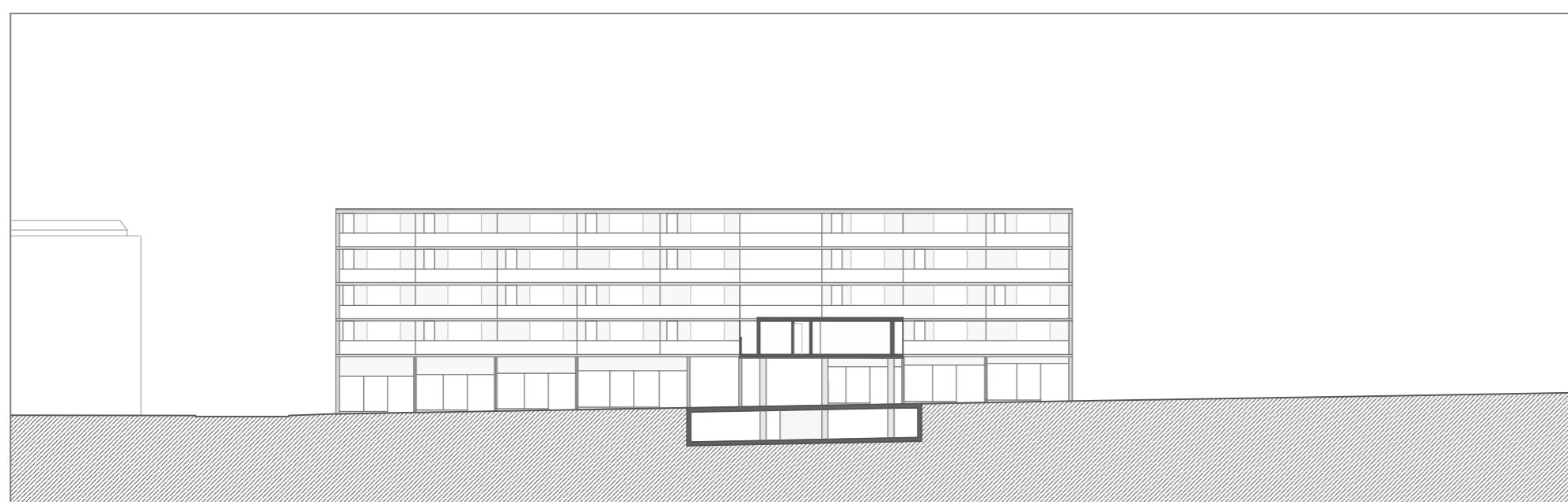
ESC. 1/500 | PLANTA



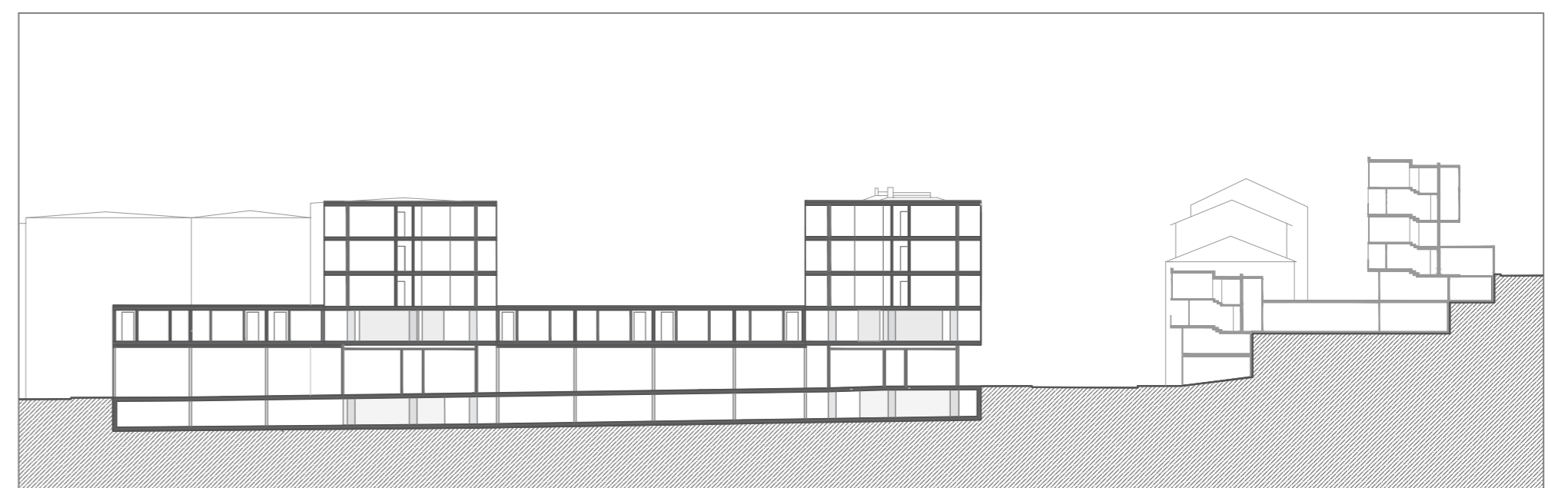
PERFIL Rua Dr. Félix Alves Pereira



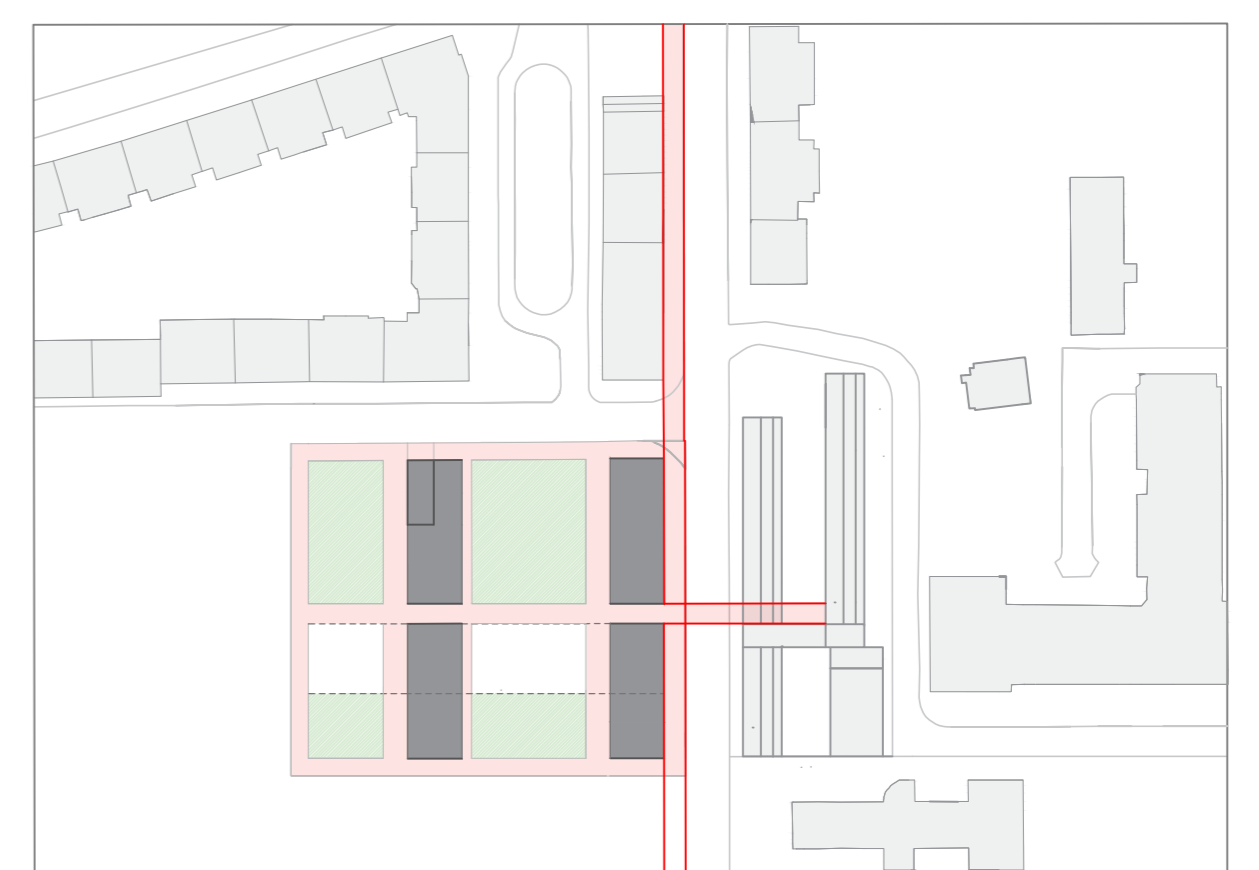
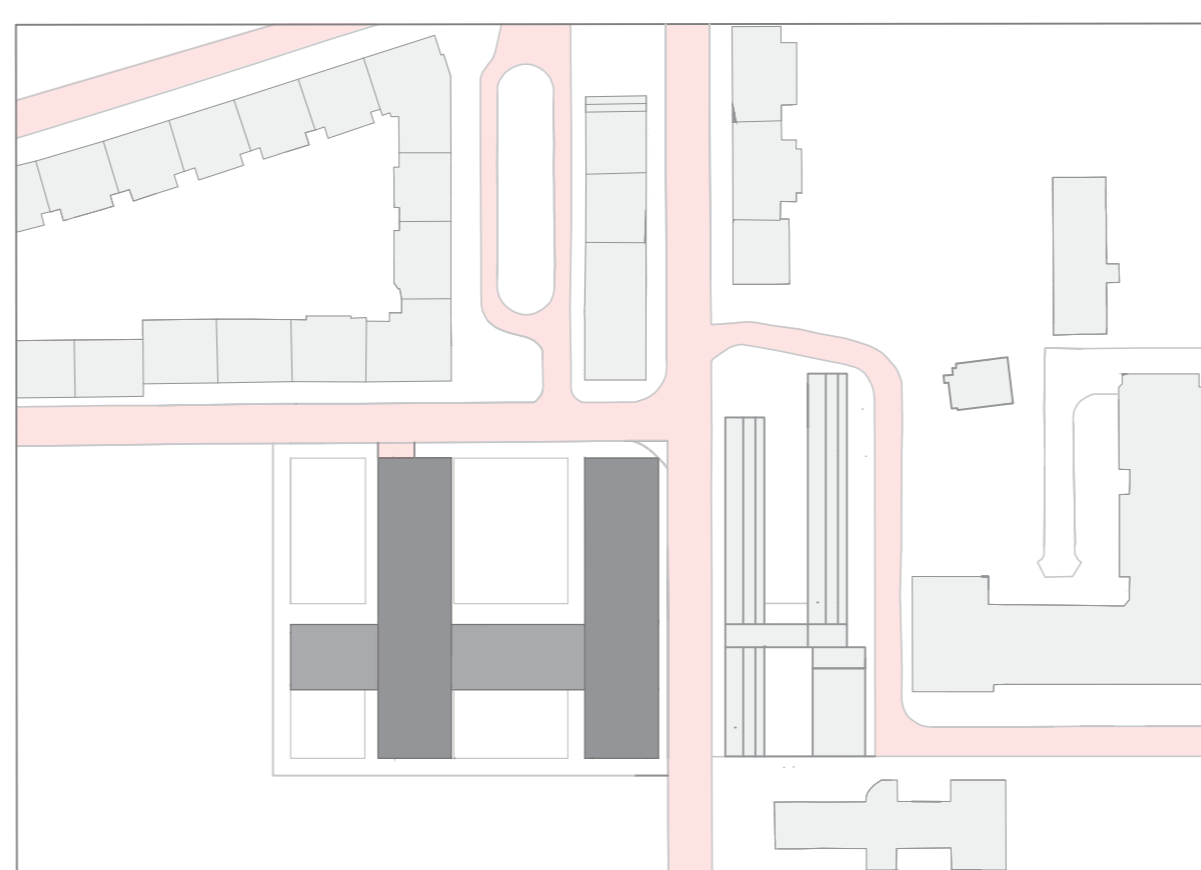
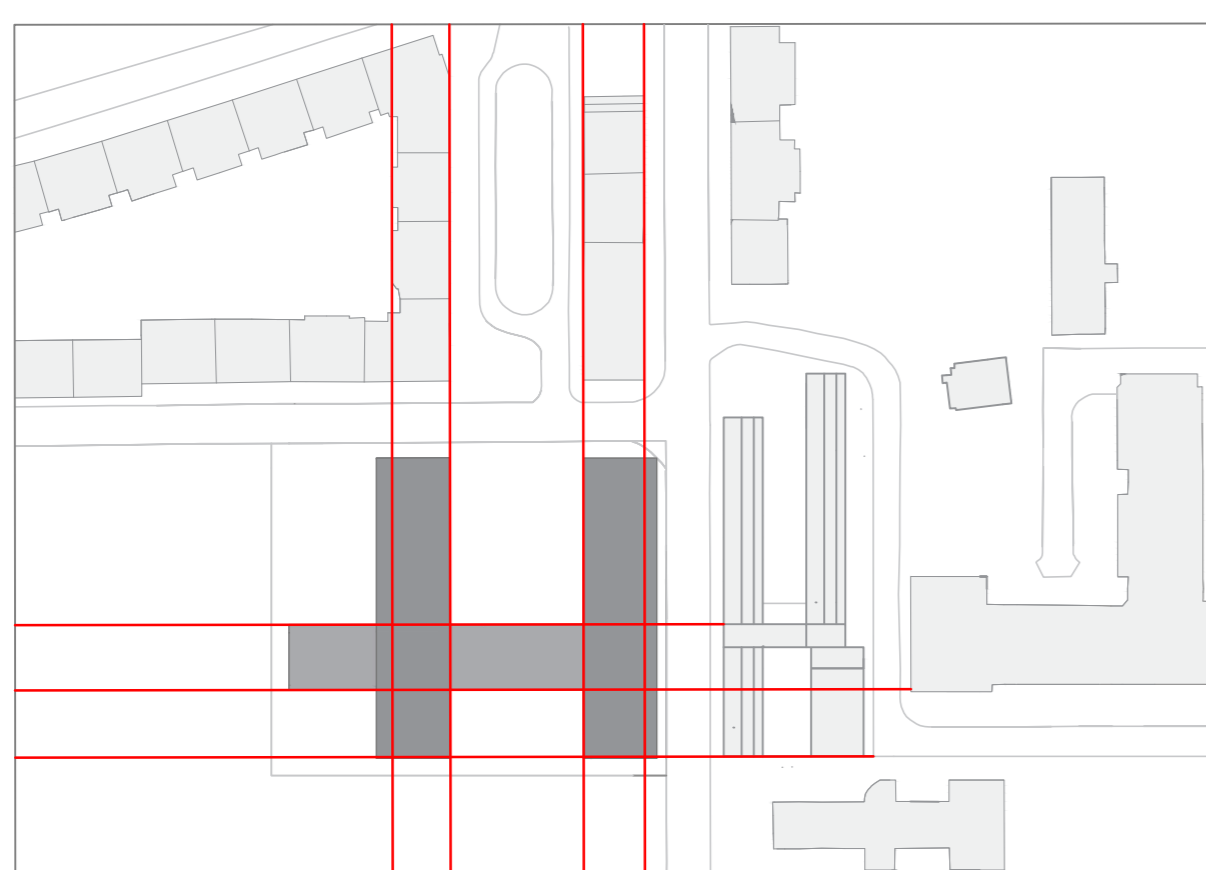
PERFIL Rua José Bento Costa

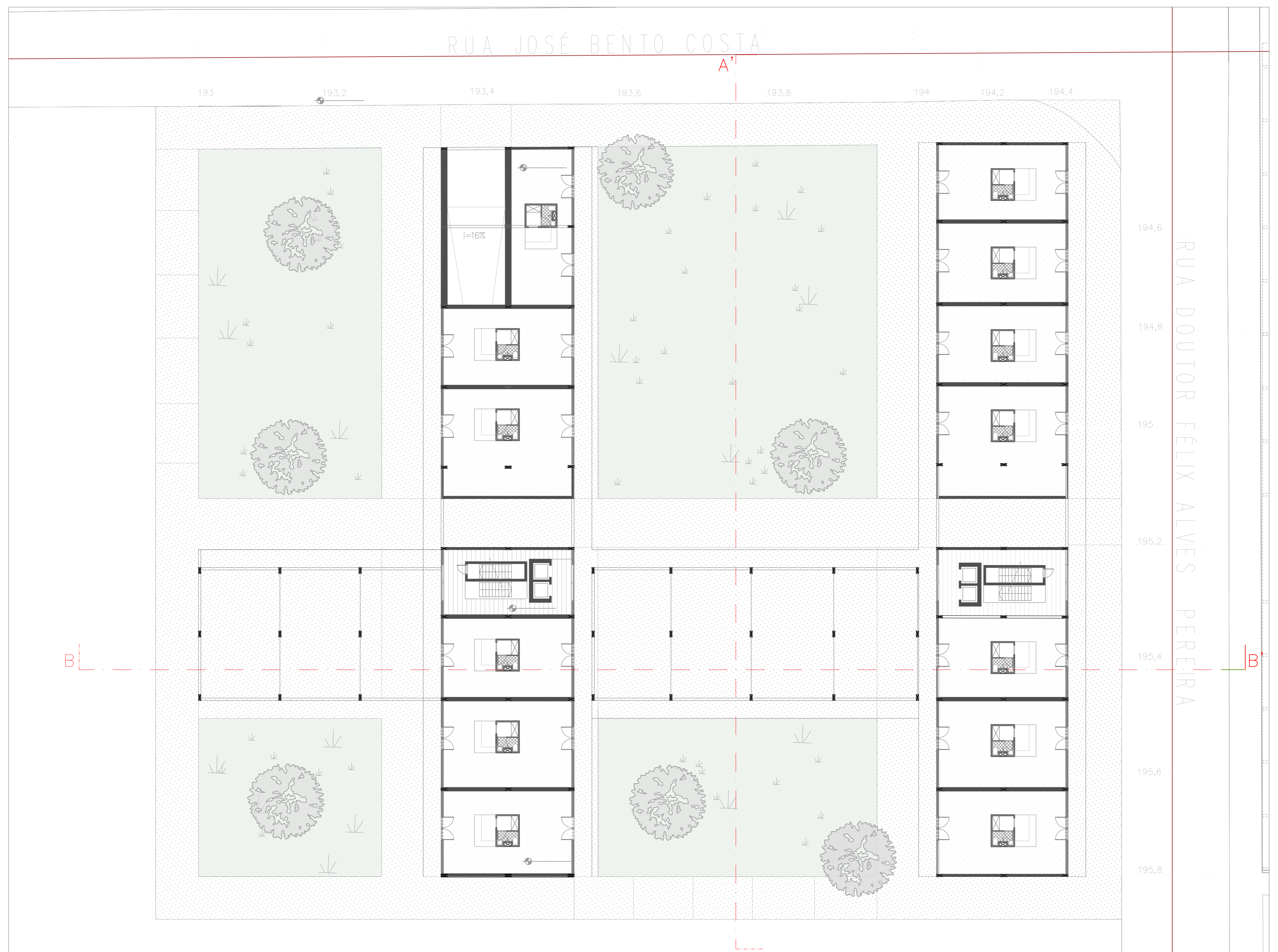


PERFIL AA'



PERFIL BB'

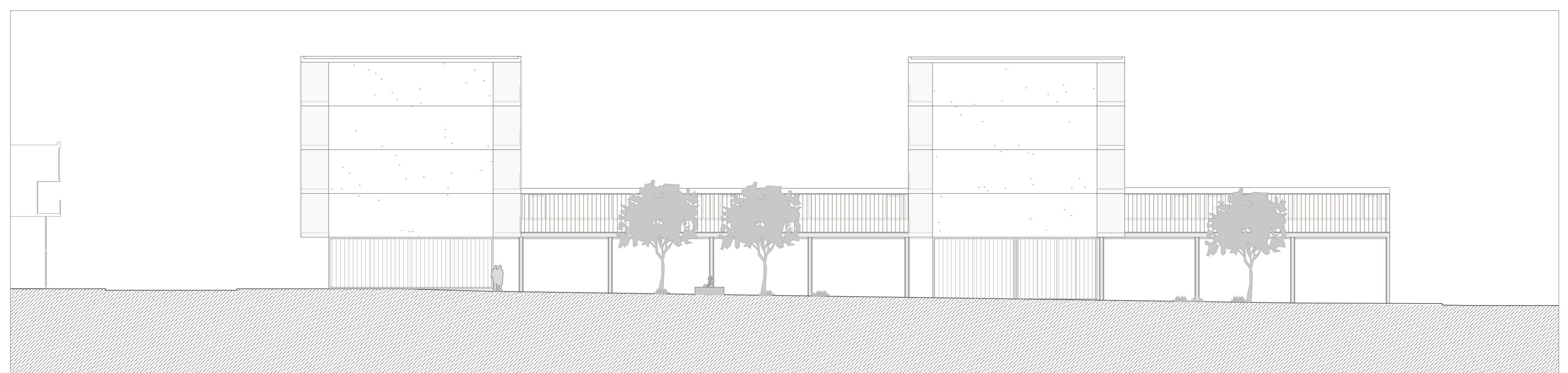




PLANTA PISO TÉRREO | COTA 197 | N



ALÇADO Rua Dr. Félix Alves Pereira



ALÇADO Rua José Bento Costa

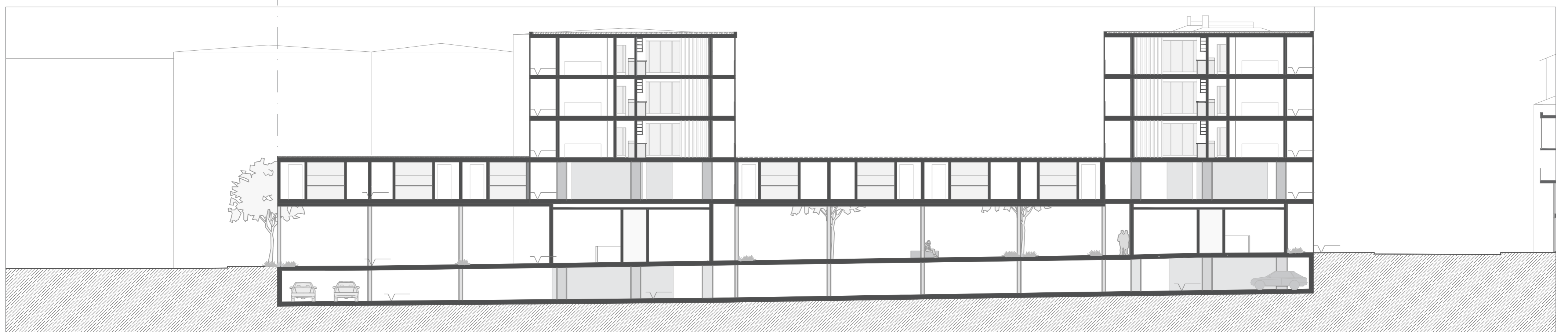
03

HABITAÇÃO COLECTIVA  
UM SENTIDO COLECTIVO DO HABITAR  
esc. 1/200  
Portela de Sintra . Sintra

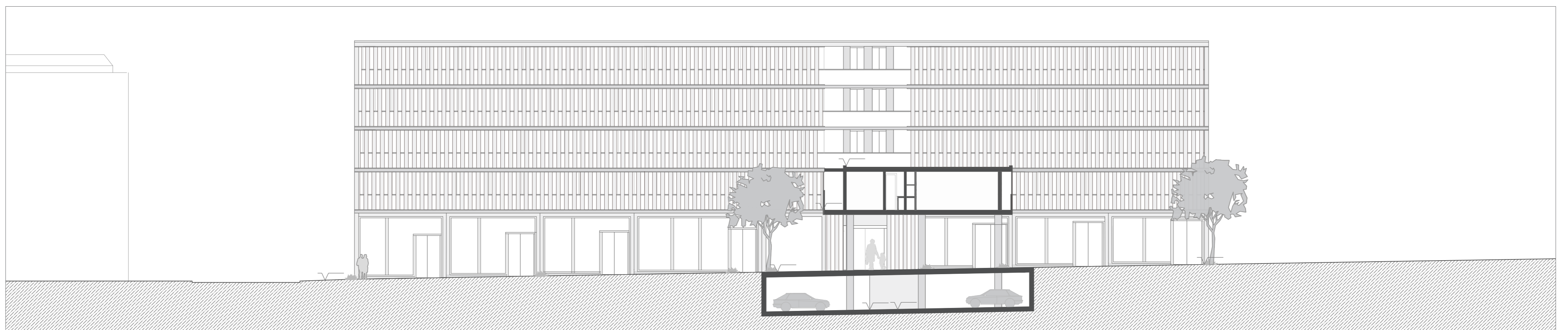
Laboratório de Projecto III . MIINT  
Turma B . 2020/2021  
Margarida Coimbra . n° 20181472



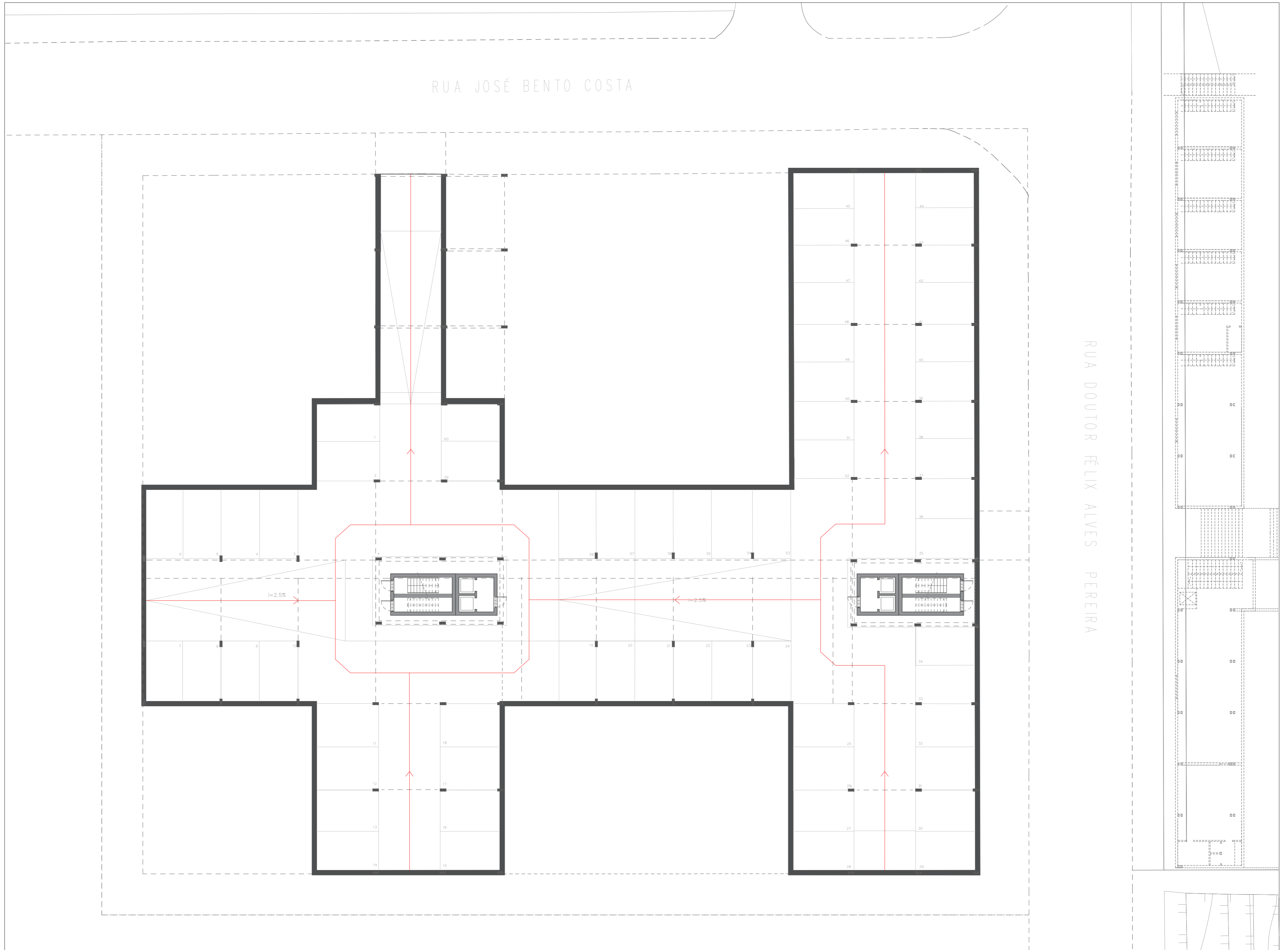
PLANTA PISO TIPO | N 0



PERFIL LONGITUDINAL BB'



PERFIL TRANSVERSAL AA'



PLANTA DO ESTACIONAMENTO | COTA 194 | N①

