

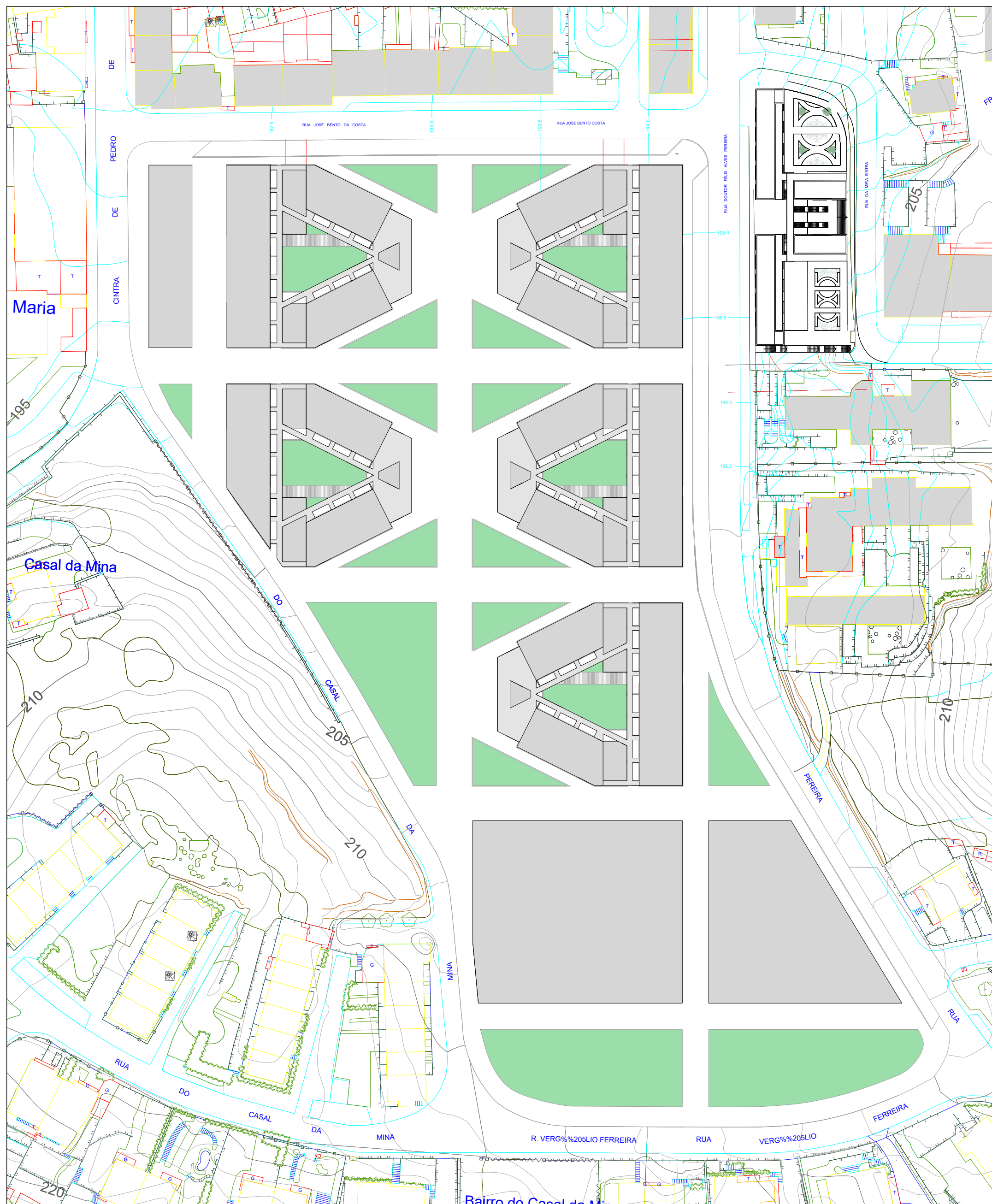
TITULO / CONCEITO

UM SENTIDO COLECTIVO DO HABITAR
esc. 1/500
Portela de Sintra . Sintra

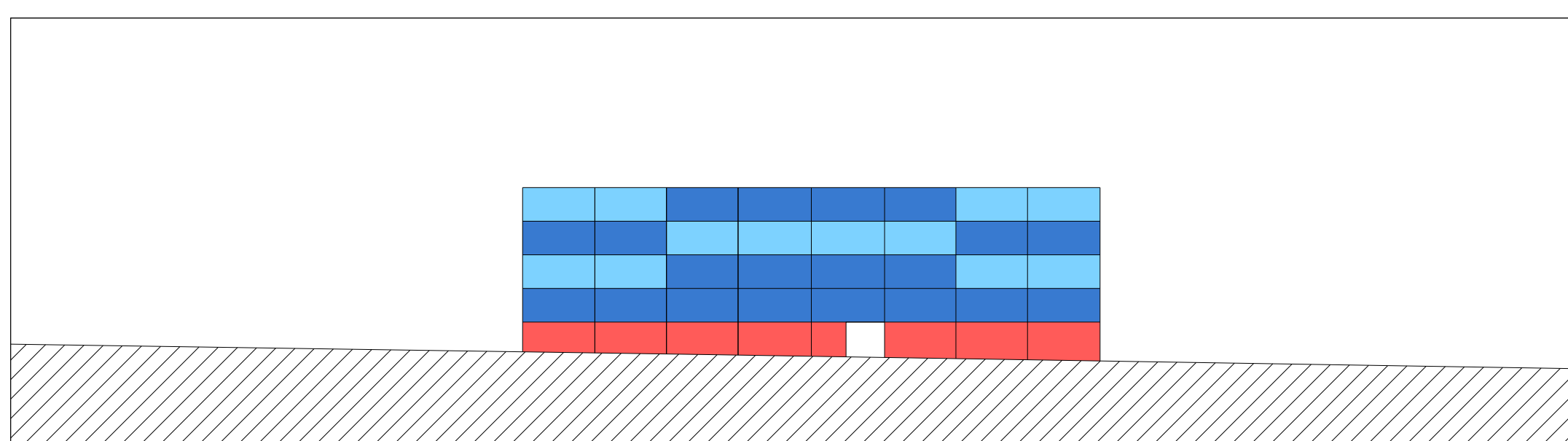
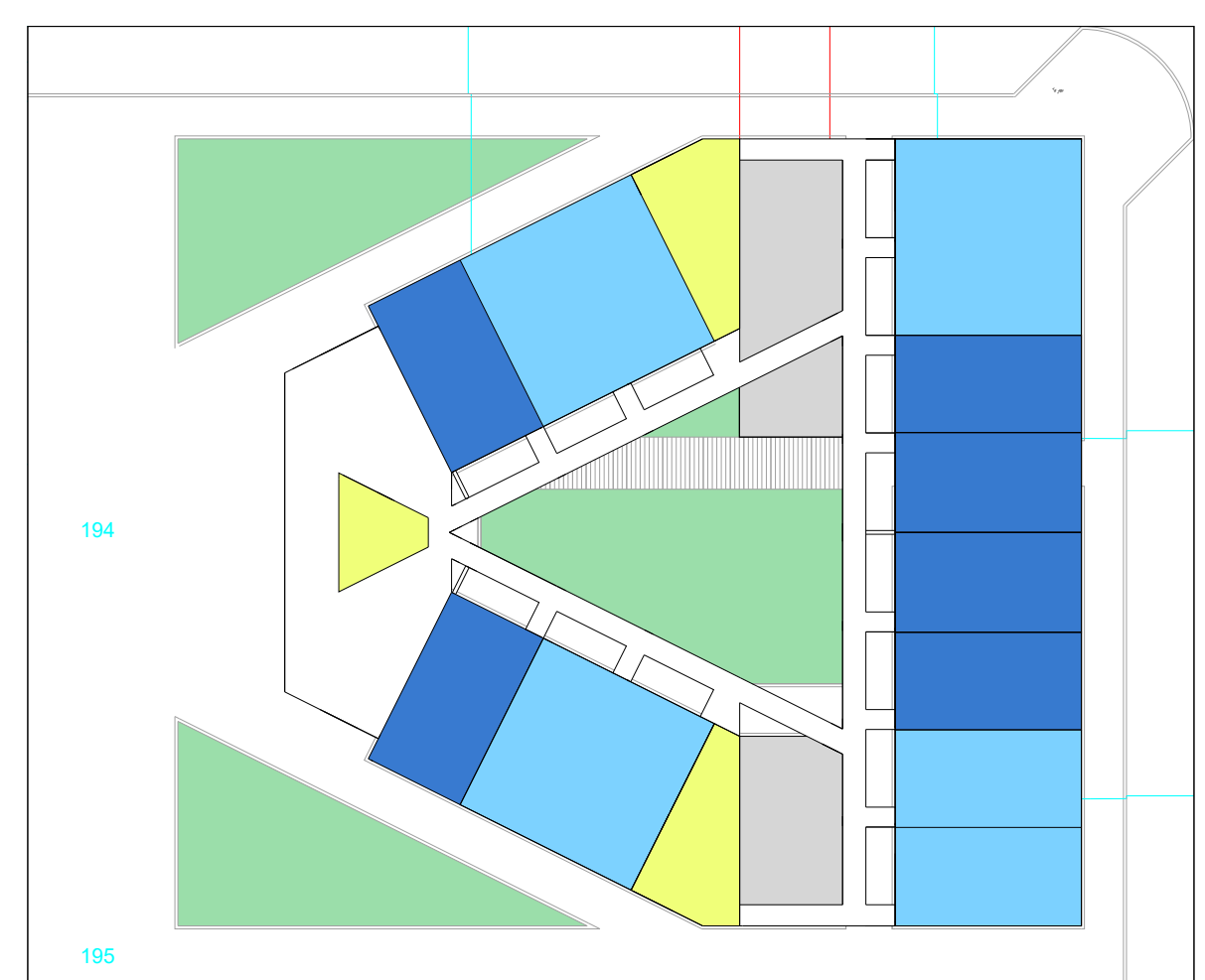
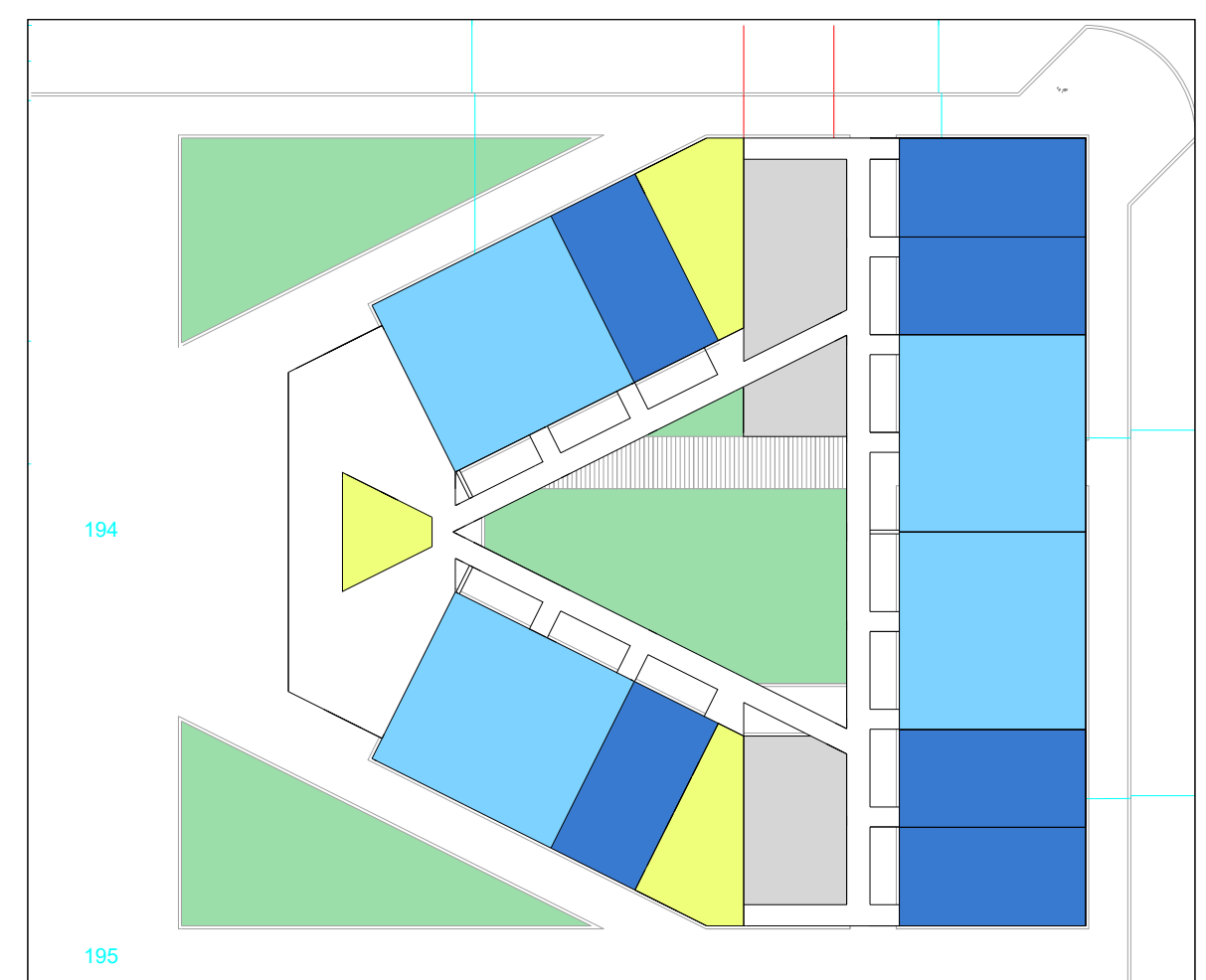
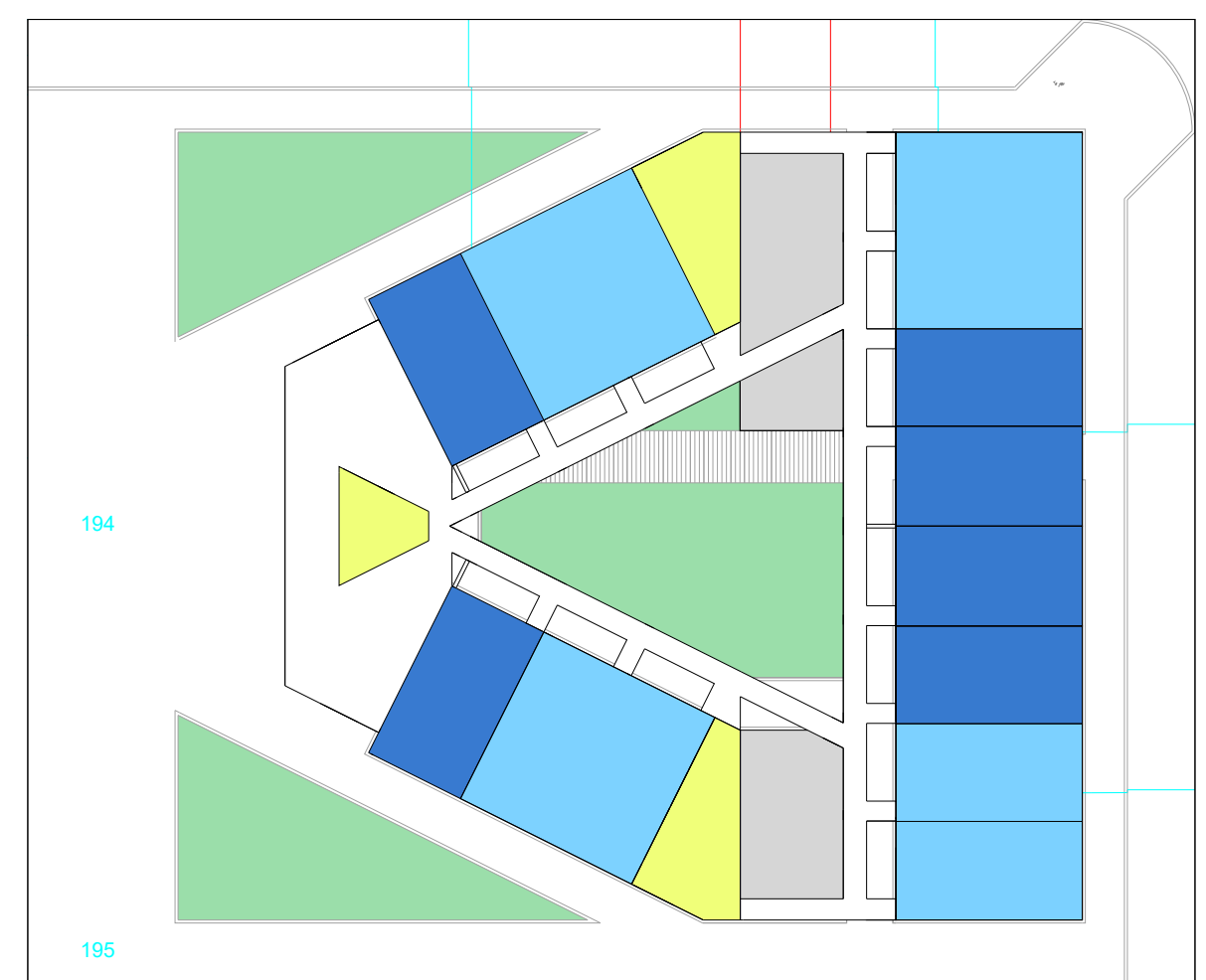
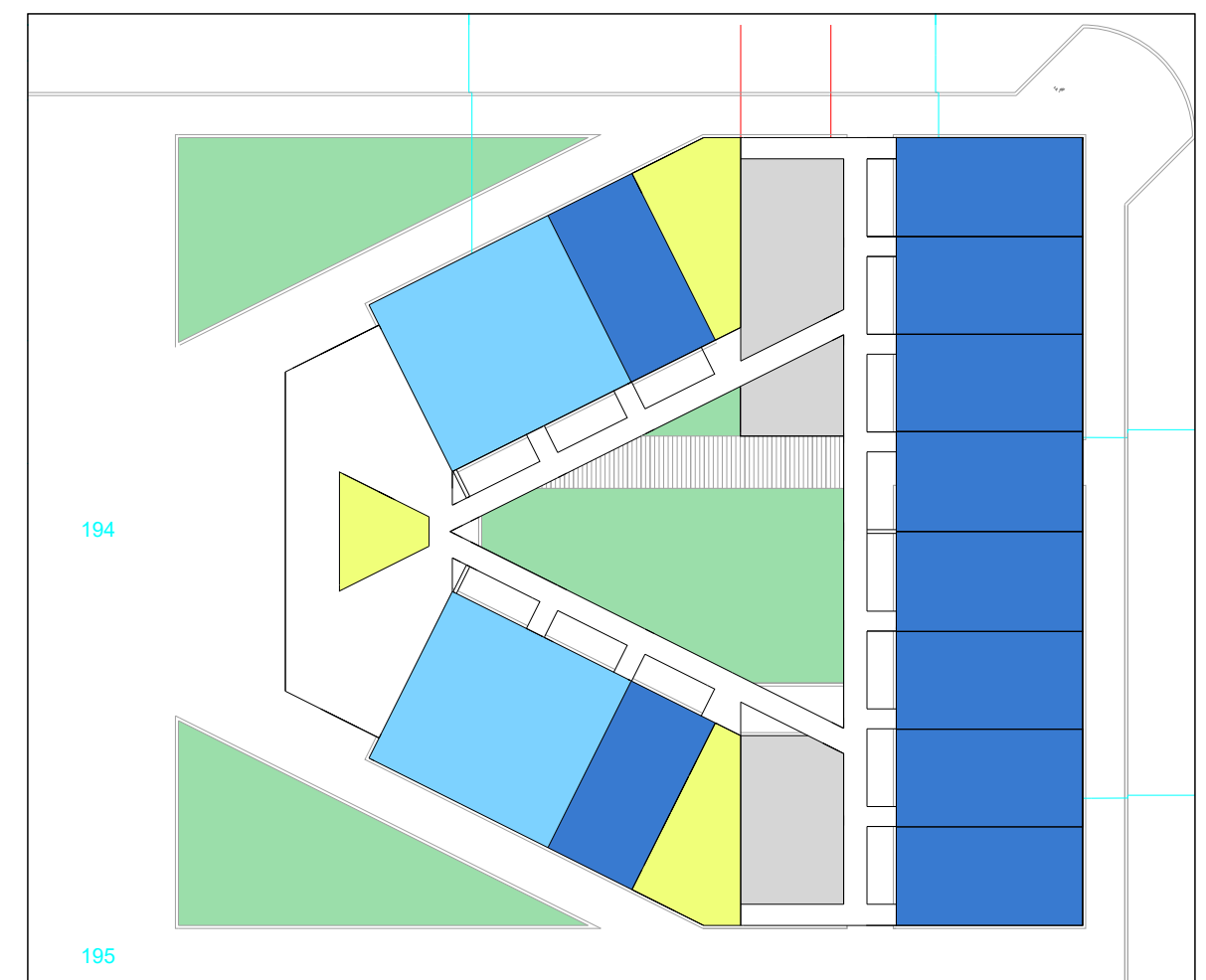
3ºB . 2020/2021

01

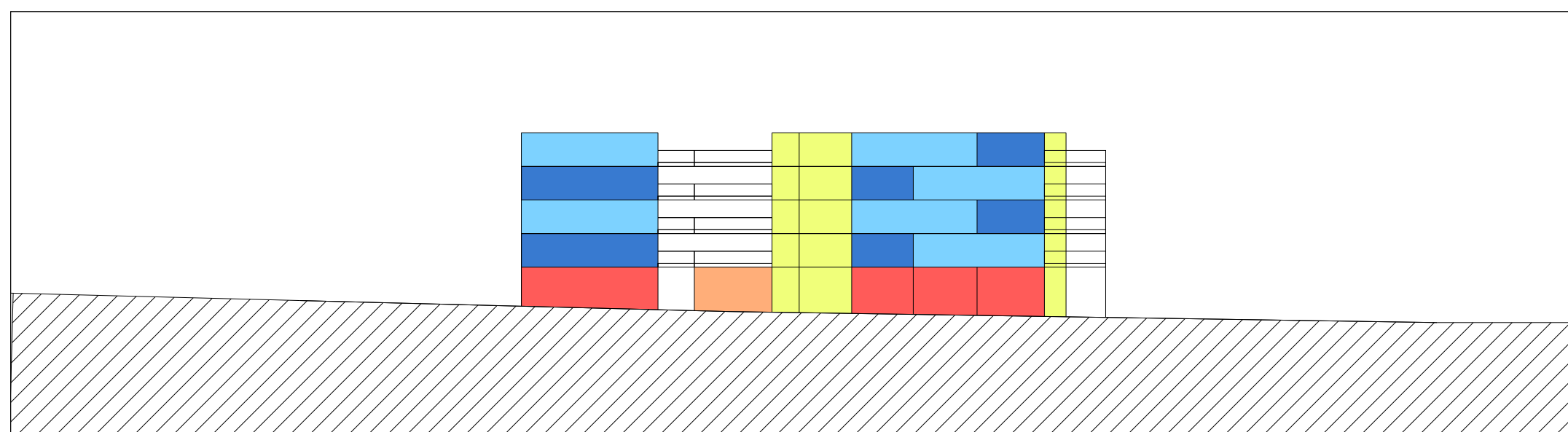
Tiago Carrilho . nº 20181483



ESC. 1/1000 | PLANTA VISTA AEREA



ALÇADO Rua Dr. Félix Alves Pereira



ALÇADO Rua José Bento Costa

FOGOS GRANDES- FOGOS PEQUENOS- ACESSOS- COMÉRCIO- GARAGEM-

ÁREA PREMEÁVEL- 1712.04 m2 (34%)

ÁREA IMPREMÁVEL- 3292.96 m2

FOTOGRAFIAS DA MAQUETE ESC/1:500

TITULO / CONCEITO

UM SENTIDO COLECTIVO DO HABITAR
esc. 1/200
Portela de Sintra . Sintra

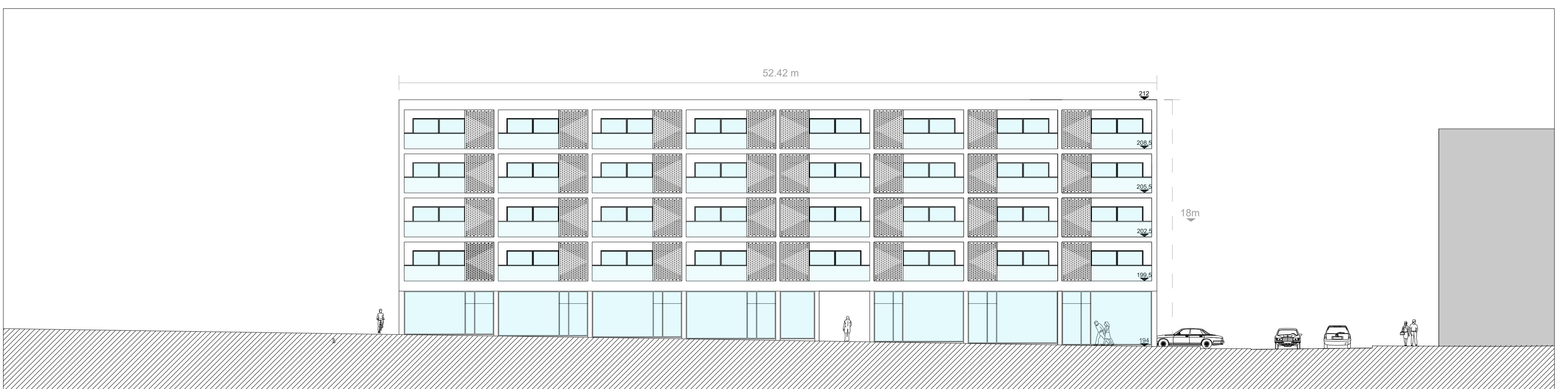
3ºB . 2020/2021

02

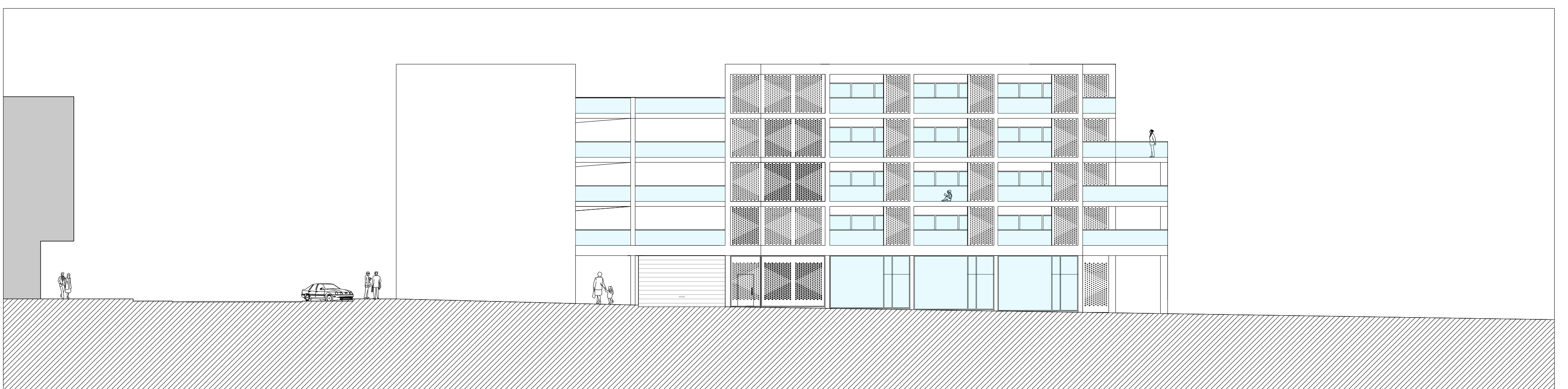
Tiago Carrilho . nº 20181483



ESC. 1/200 | PLANTA PISO TERREO



PERFIL LONGITUDINAL



PERFIL TRANSVERSAL Faculdade de Arquitetura - Universidade de Lisboa | 2020 / 2021 | 3º ano | 2º semestre | Prof. Carlos Macedo e Caio Castro

TITULO / CONCEITO
UM SENTIDO COLECTIVO DO HABITAR
esc. 1/200
Portela de Sintra . Sintra

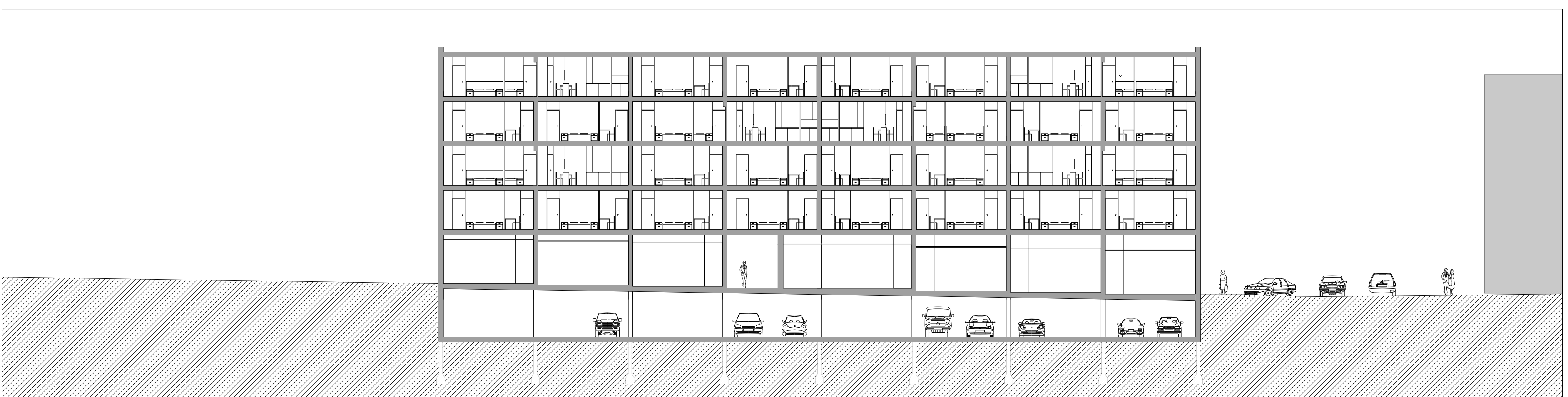
3ºB . 2020/2021

03

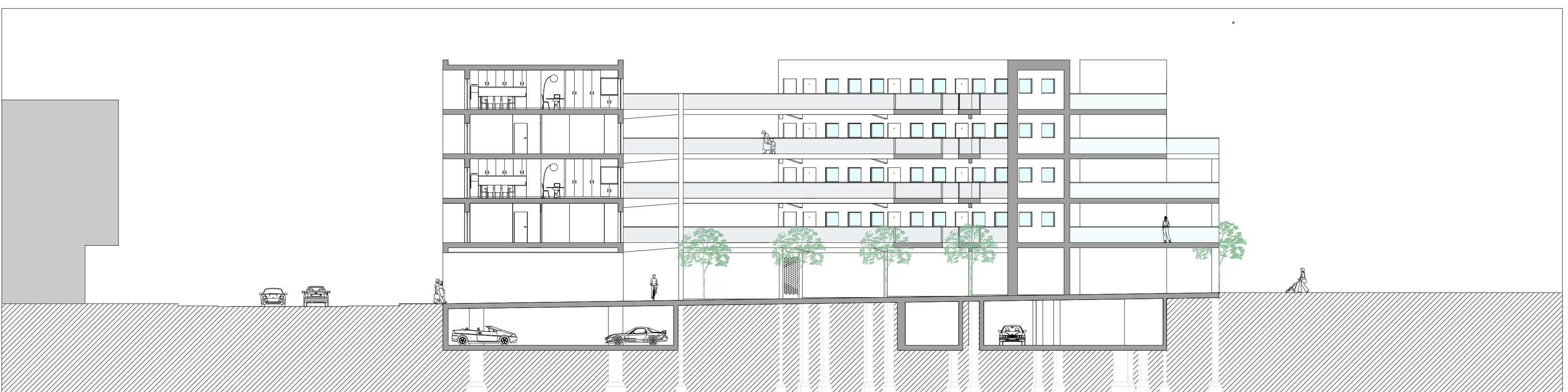
Tiago Carrilho . nº 20181483



ESC. 1/200 | PLANTA PISO TIPO



PERFIL LONGITUDINAL LL'



PERFIL TRANSVERSAL TT' Faculdade de Arquitetura - Universidade de Lisboa | 2020 / 2021 | 3º ano | 2º semestre | Prof. Carlos Macedo e Caio Castro

TITULO / CONCEITO

UM SENTIDO COLECTIVO DO HABITAR
esc. 1/200
Portela de Sintra . Sintra

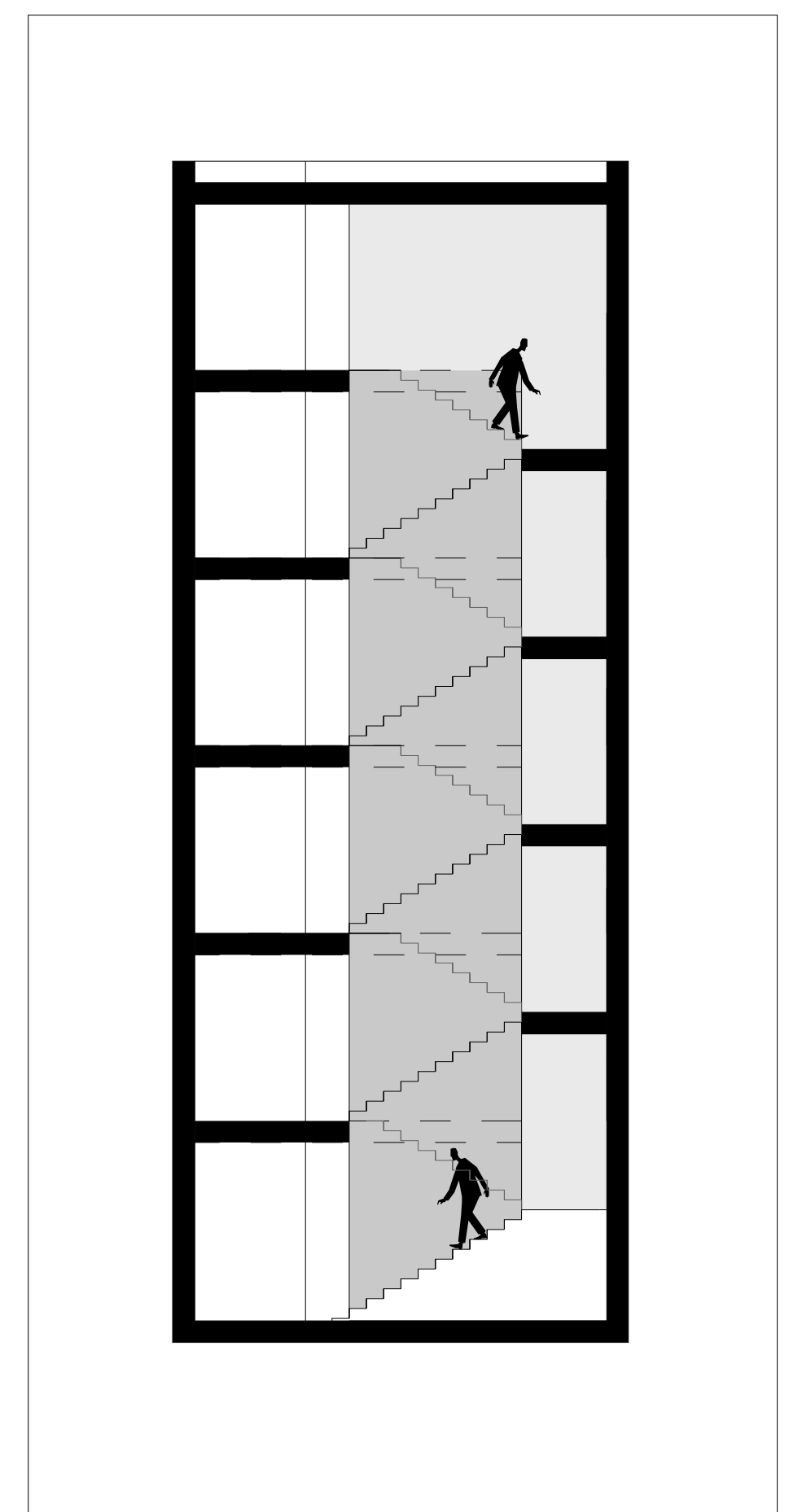
Turma 3ºB . 2020/2021

04

Tiago Carrilho . nº 20181483



ESC. 1/200 | PLANTA DO ESTACIONAMENTO



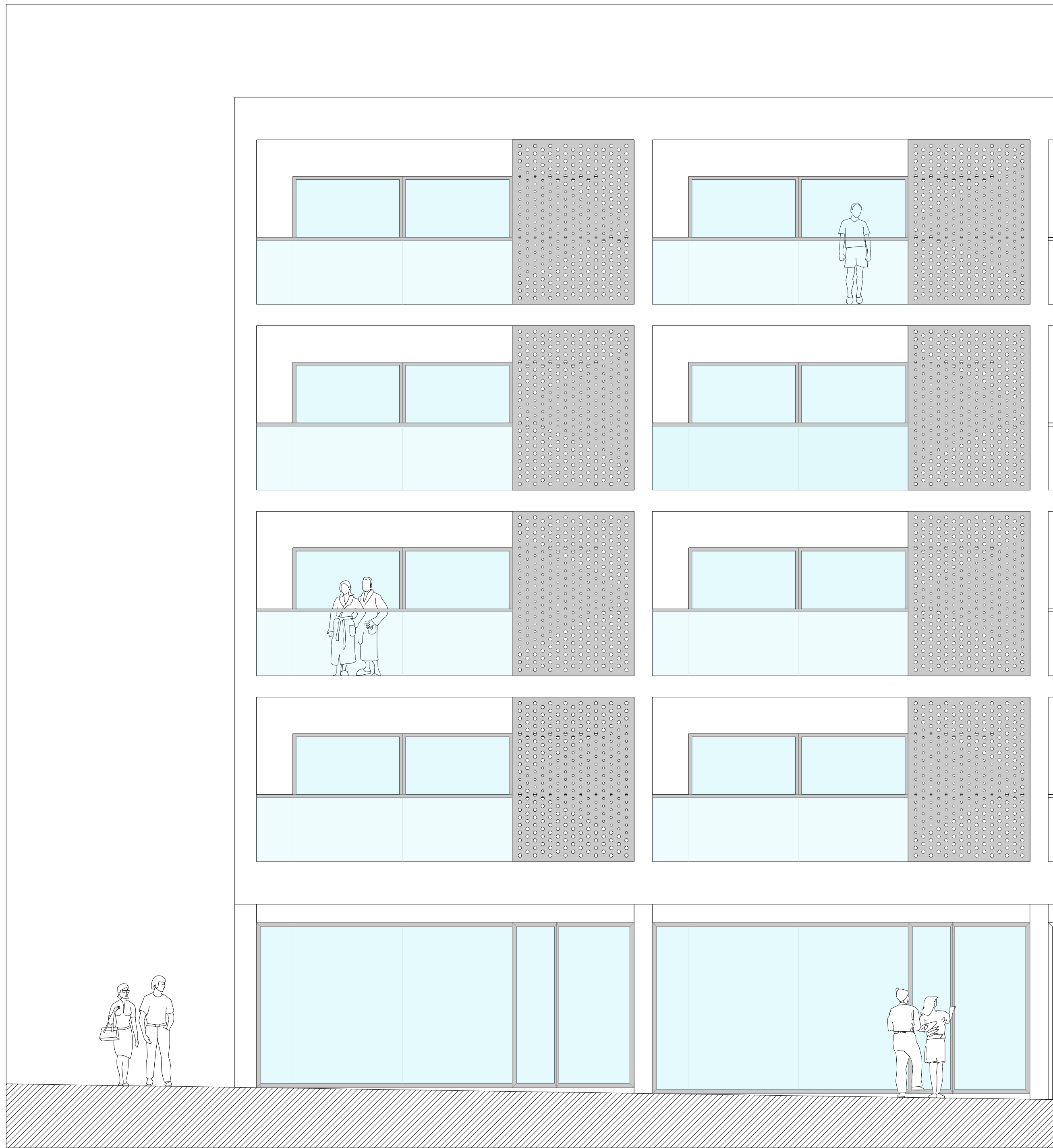
FOTOGRAFIAS DA MAQUETE ESC/1:200

ESC/1:100 PORMENOR DE ACESSO VERTICAL (NORTE)

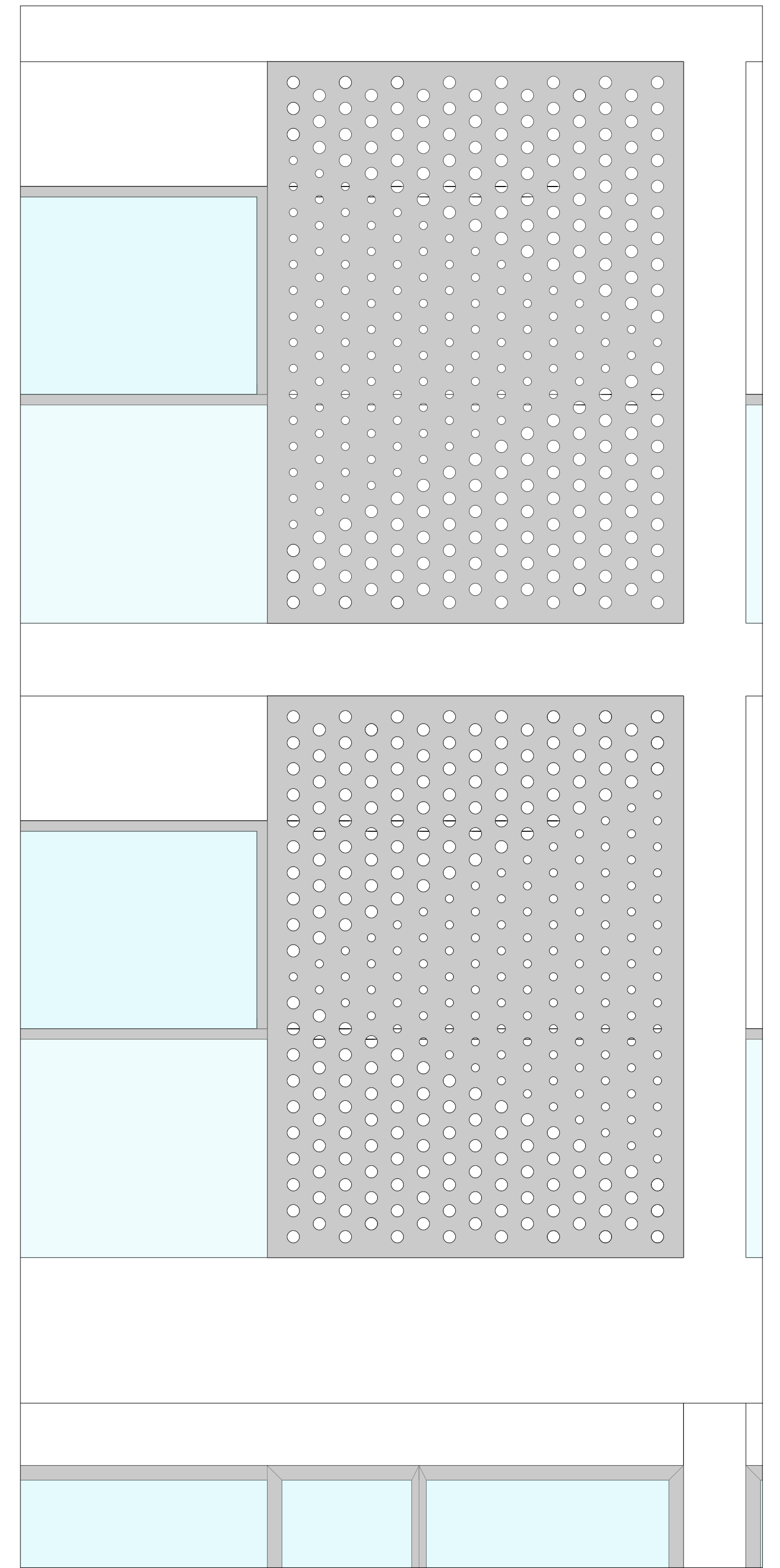
TITULO / CONCEITO

UM SENTIDO COLECTIVO DO HABITAR
esc. 1/50
Portela de Sintra . Sintra

05



ESC. 1/50 | PORMENOR DO ALÇADO PRINCIPAL



ESC. 1/20 | PORMENOR DO ALÇADO PRINCIPAL



ESC. 1/50 | PLANTA DOS FOGOS



TITULO / CONCEITO

UM SENTIDO COLECTIVO DO HABITAR

esc. 1/50

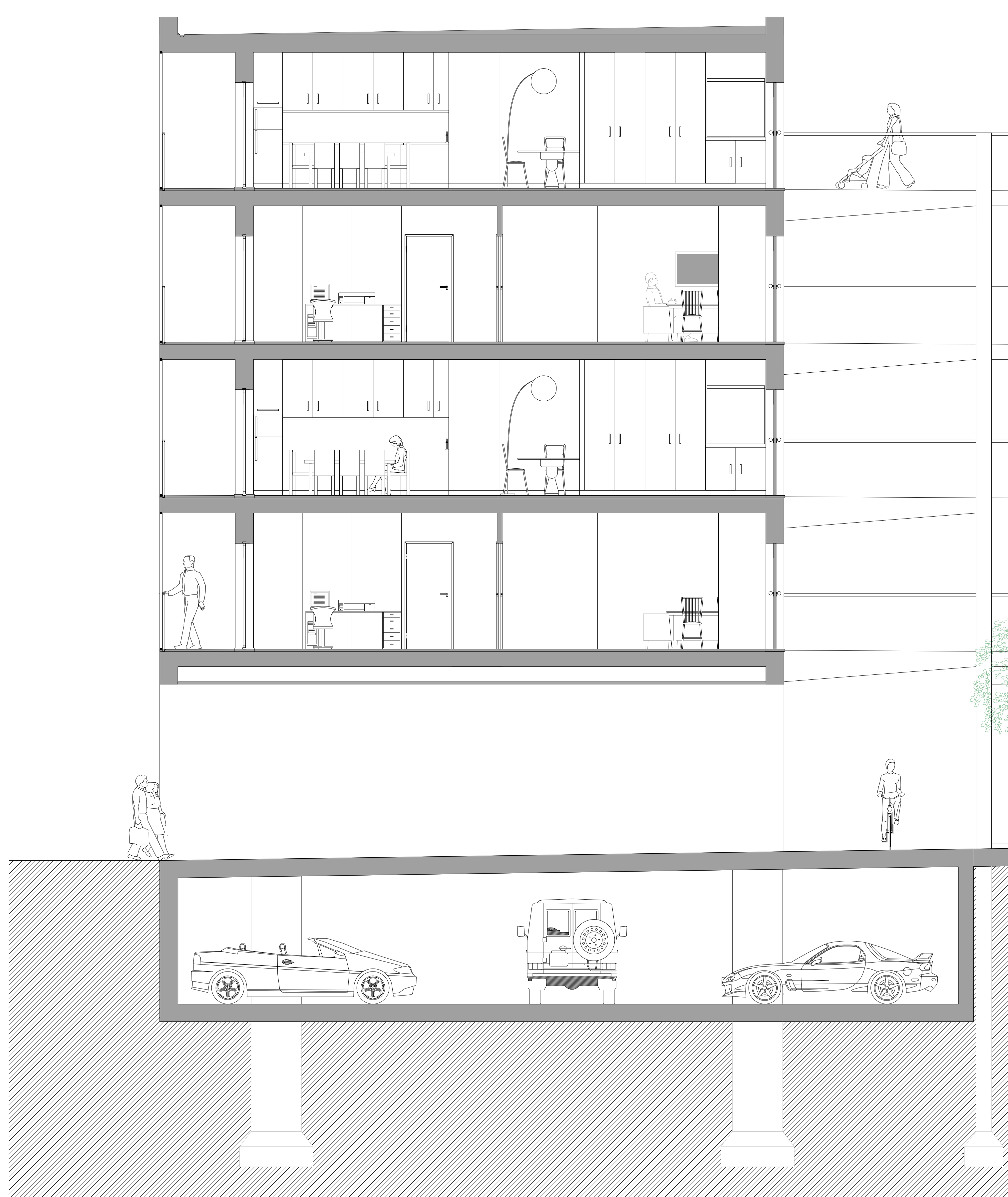
Portela de Sintra . Sintra

06

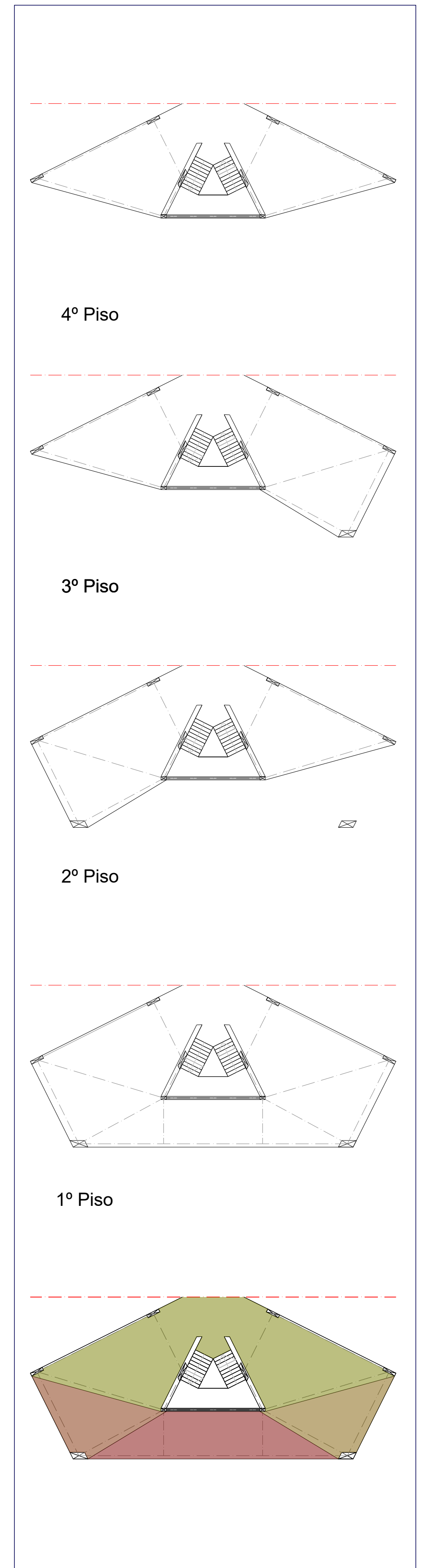
Laboratório de Projecto III . MIARQ | MIINT

Turma 3ªB . 2020/2021

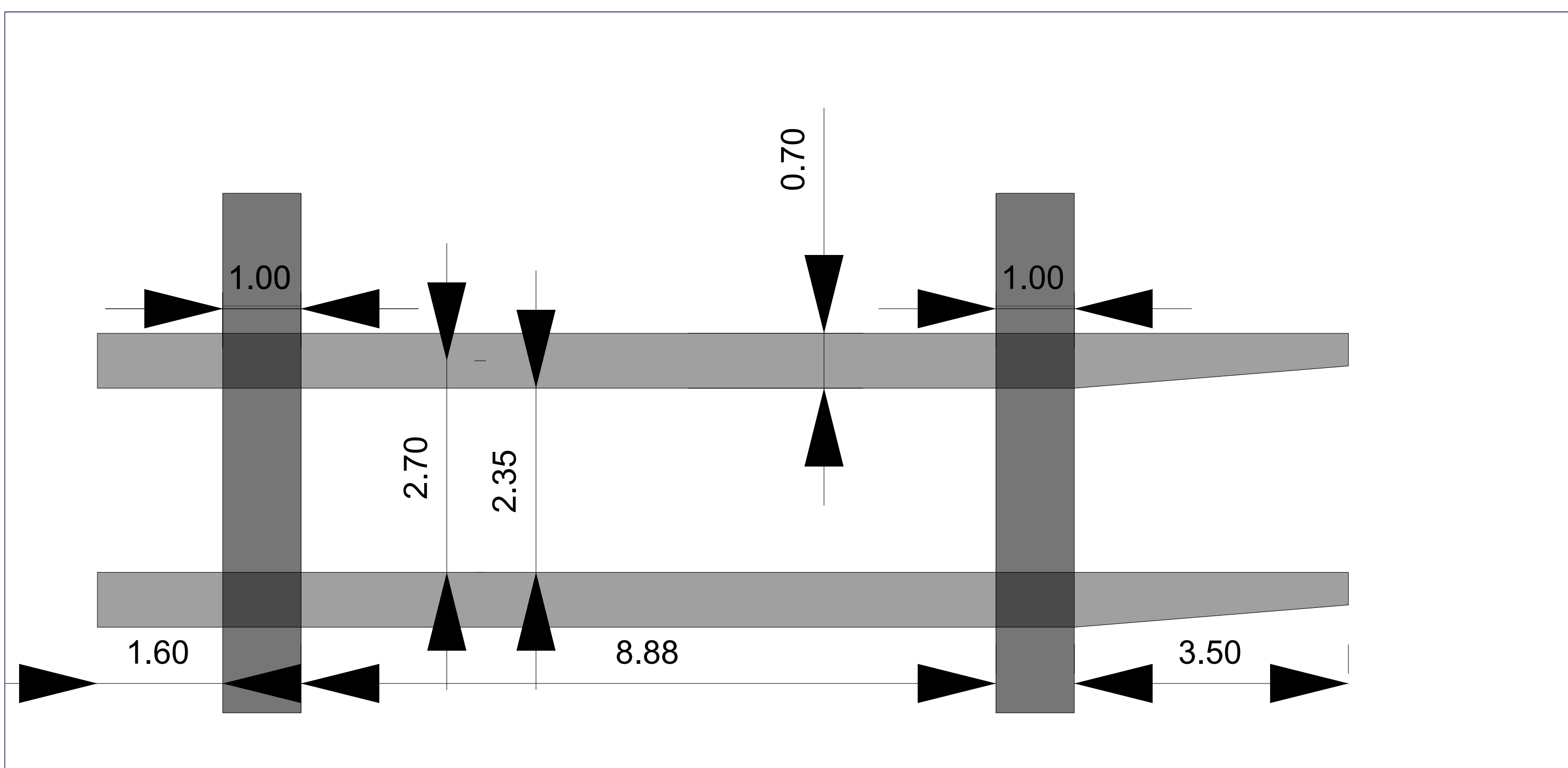
Tiago Carrilho . nº 20181483



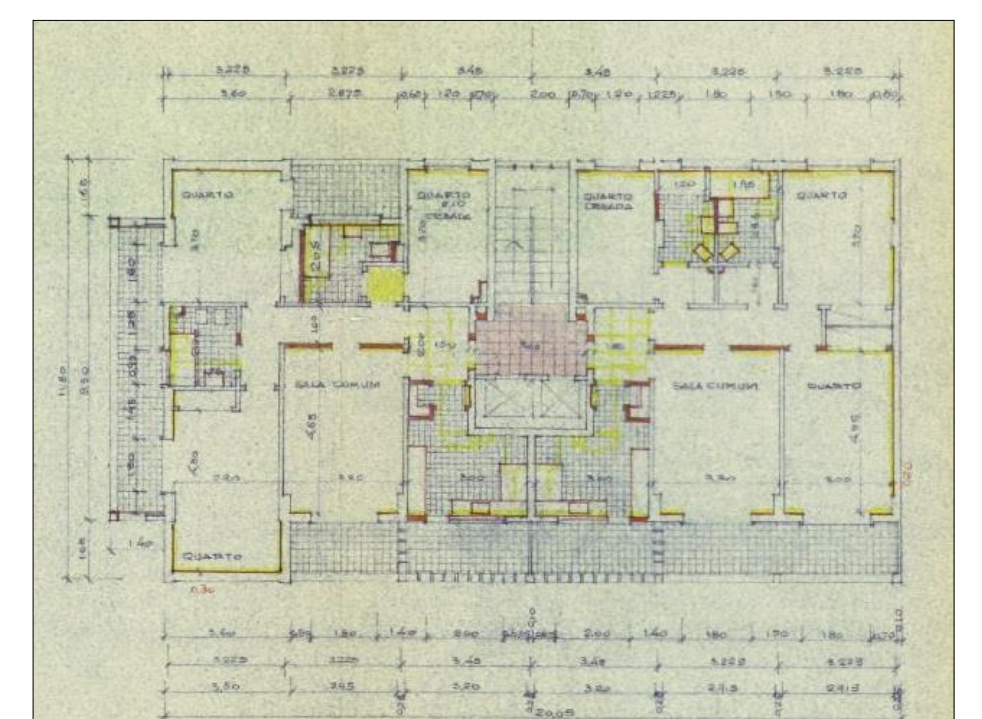
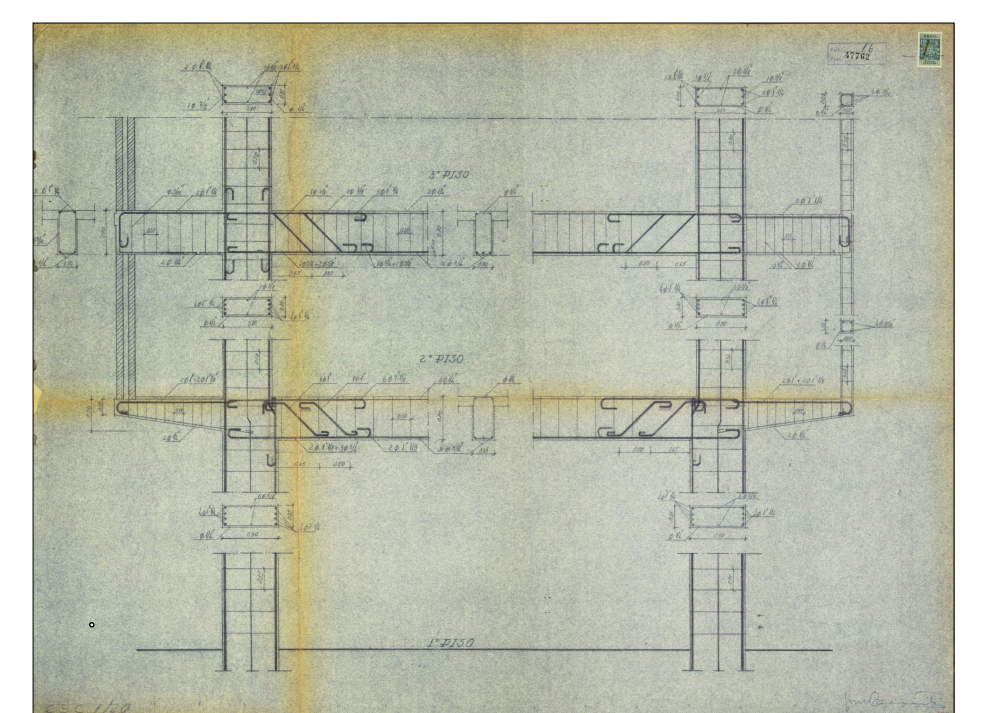
ESC. 1/50 | CORTE CC'



ESC. 1/250 | VARANDAS COMUNS



ESC.1/50 PORMENOR CONSTRUTIVO (CONSOLAS)



AVENIDA DOS ESTADOS UNIDOS (1700-178 LISBOA)
EDIFÍCIO Nº70