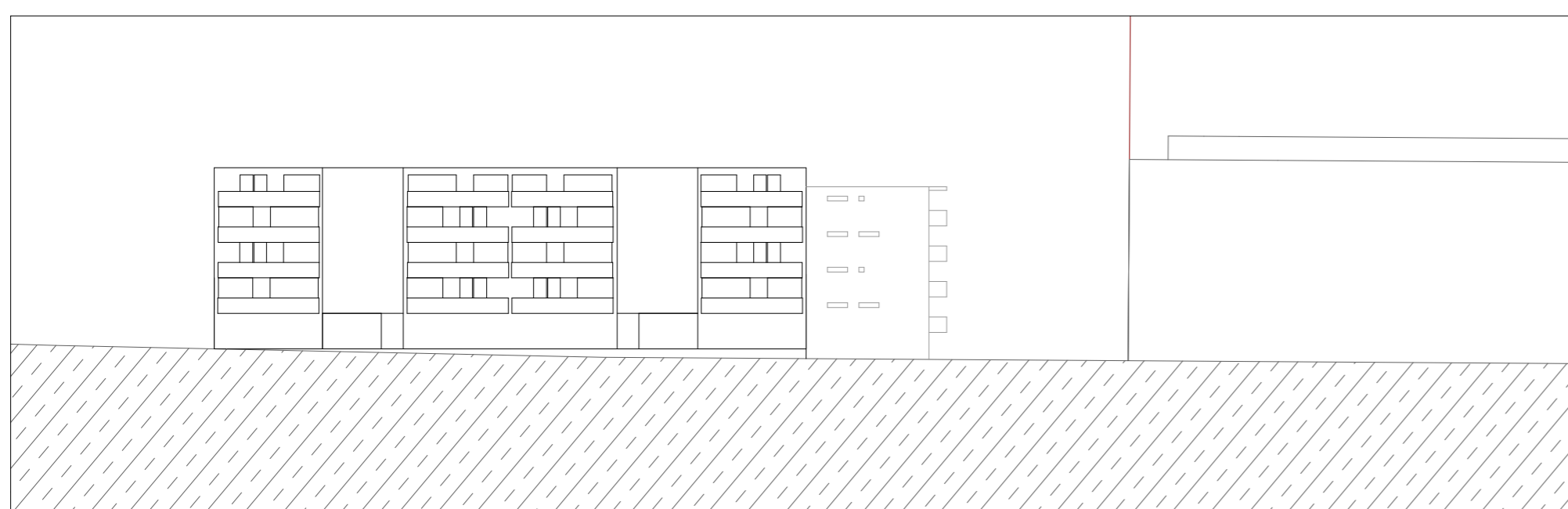


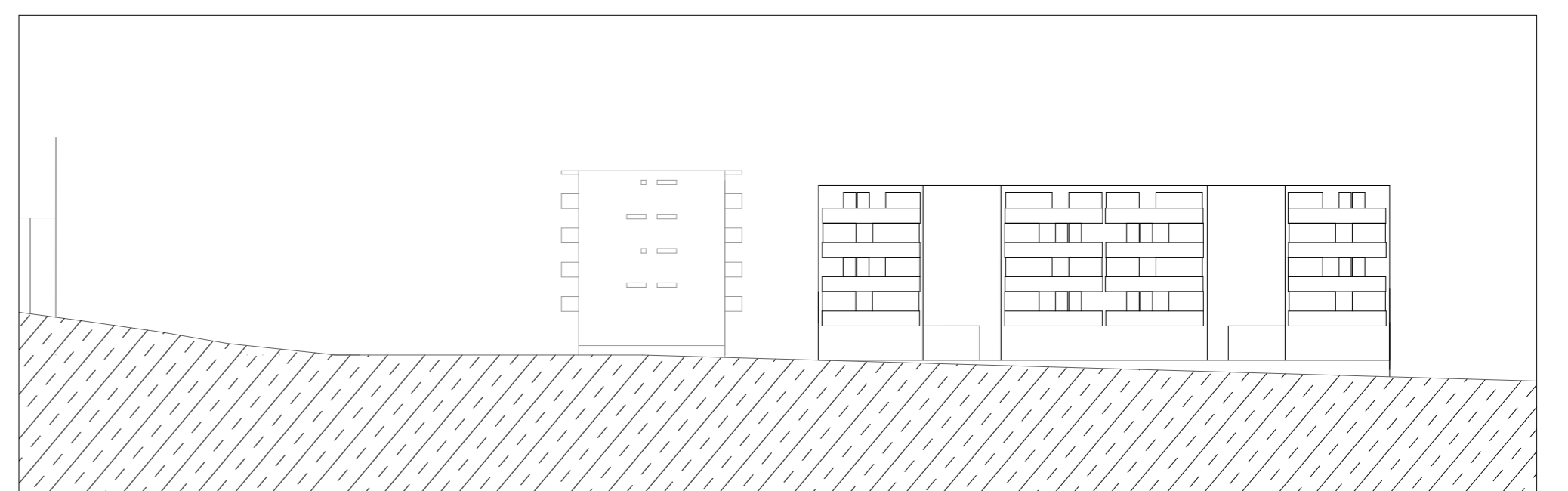
# 01



ESC. 1/500 | PLANTA GERAL DE ENQUADRAMENTO



PERFIL Rua Dr. Félix Alves Pereira



PERFIL Rua José Bento Costa

# HABITAÇÃO COLECTIVA

UM SENTIDO COLECTIVO DO HABITAR

esc. 1/200

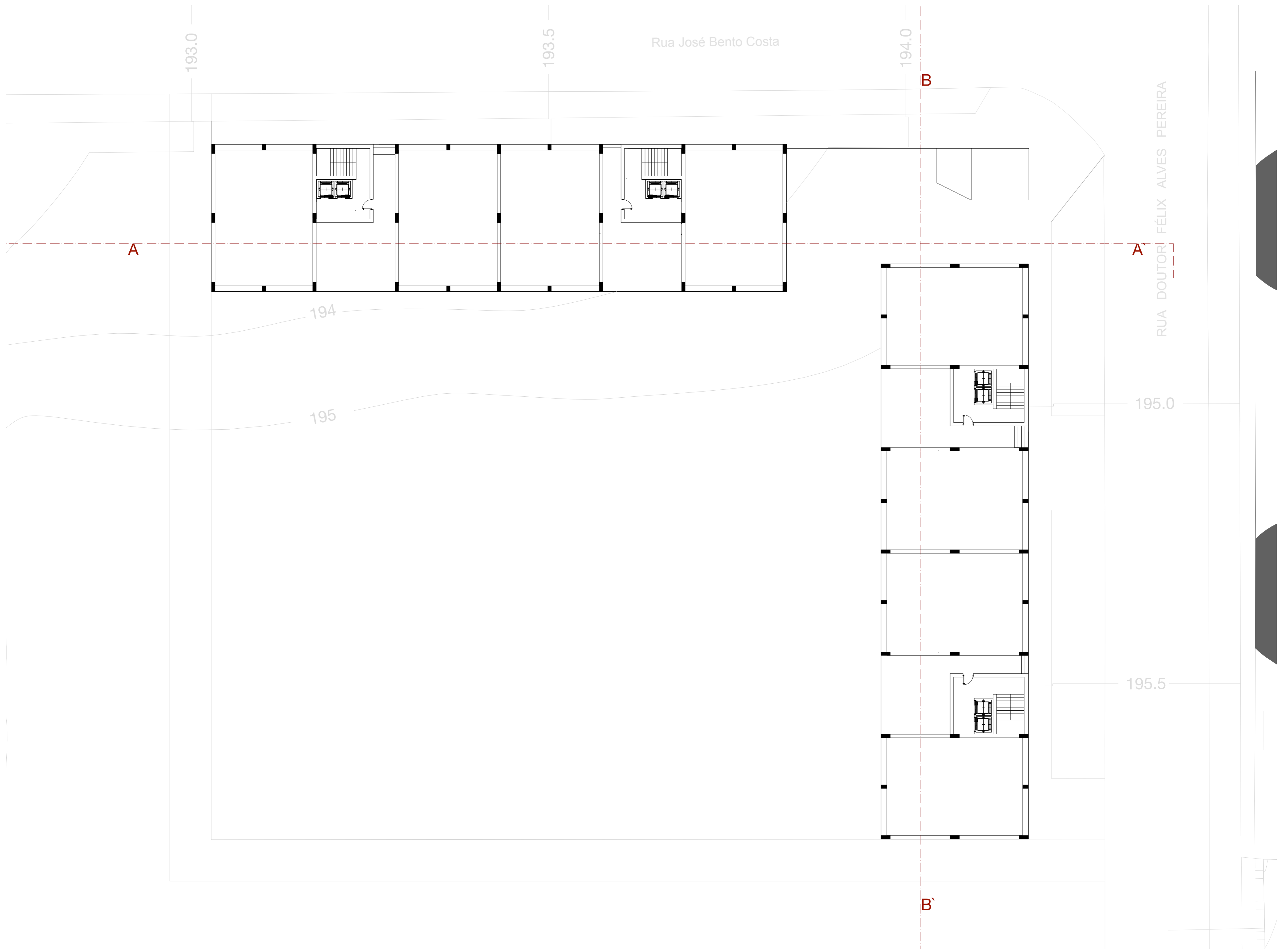
Portela de Sintra . Sintra

Laboratório de Projecto III . MIINT

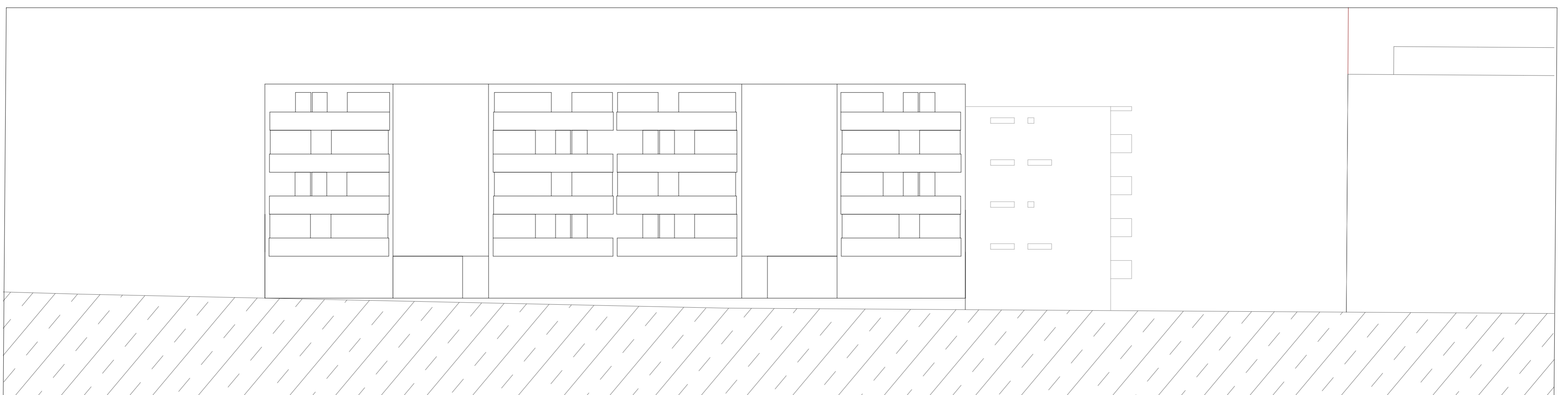
Turma B . 2020/2021

Catarina Brito . nº 20181287

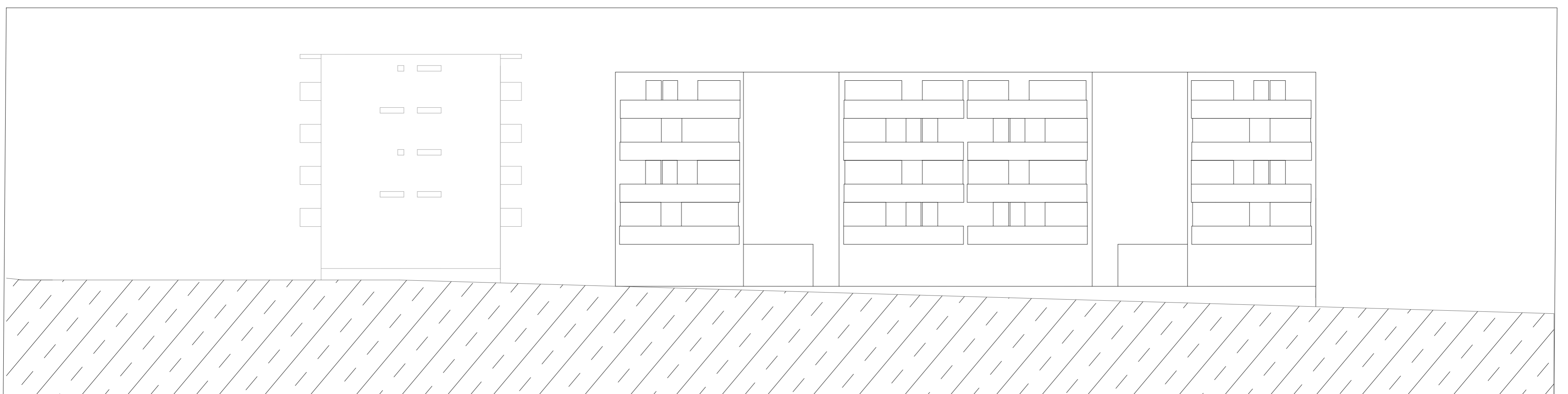
# 02



ESC. 1/200 | PLANTA PISO TÉRREO



ALÇADO Rua Dr. Félix Alves Pereira



ALÇADO Rua José Bento Costa

# HABITAÇÃO COLECTIVA

UM SENTIDO COLECTIVO DO HABITAR

esc. 1/200

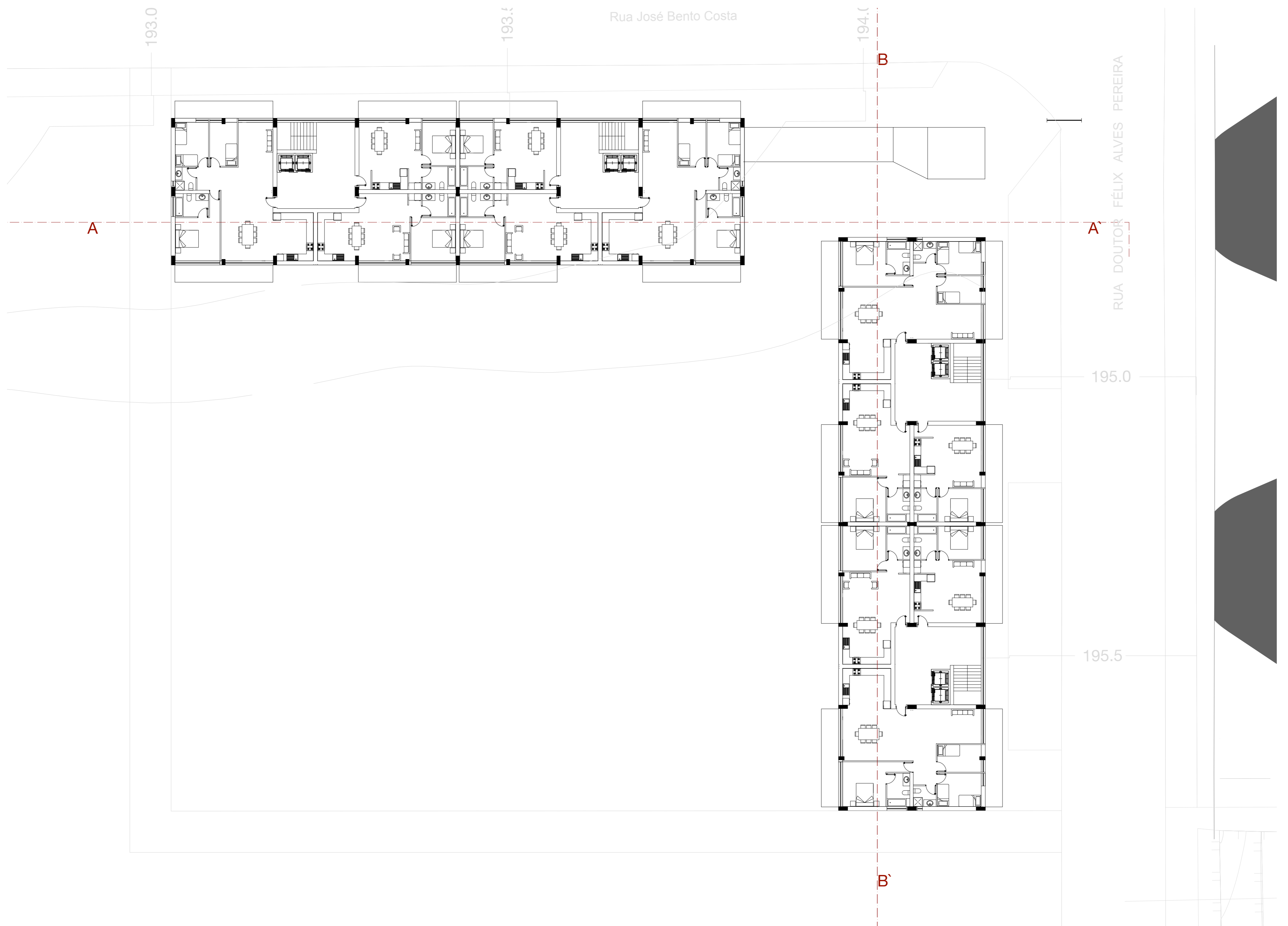
Portela de Sintra . Sintra

Laboratório de Projecto III . MIINT

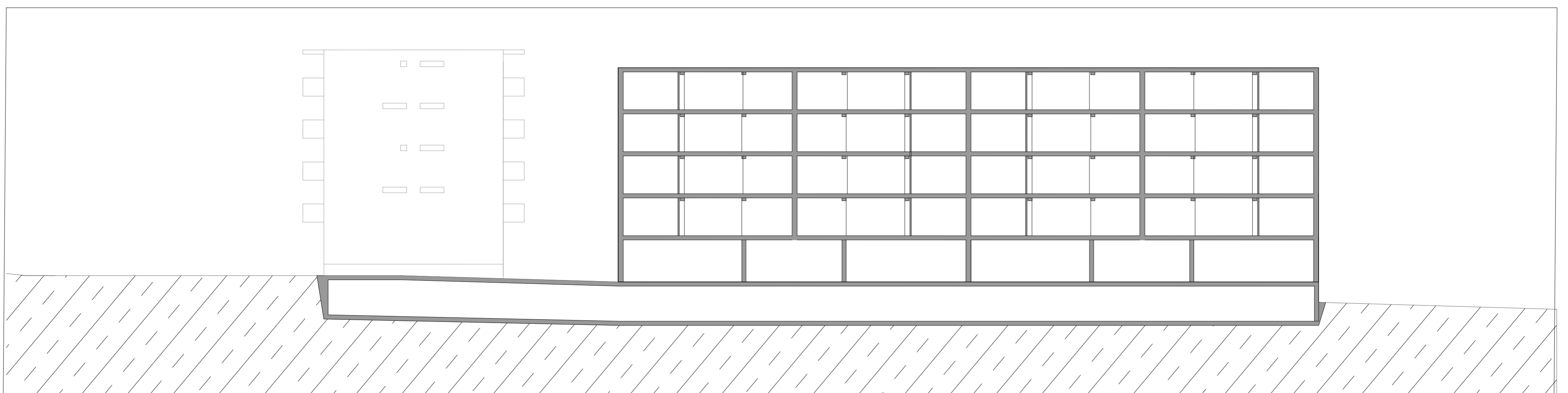
Turma B . 2020/2021

Catarina Brito . nº 20181287

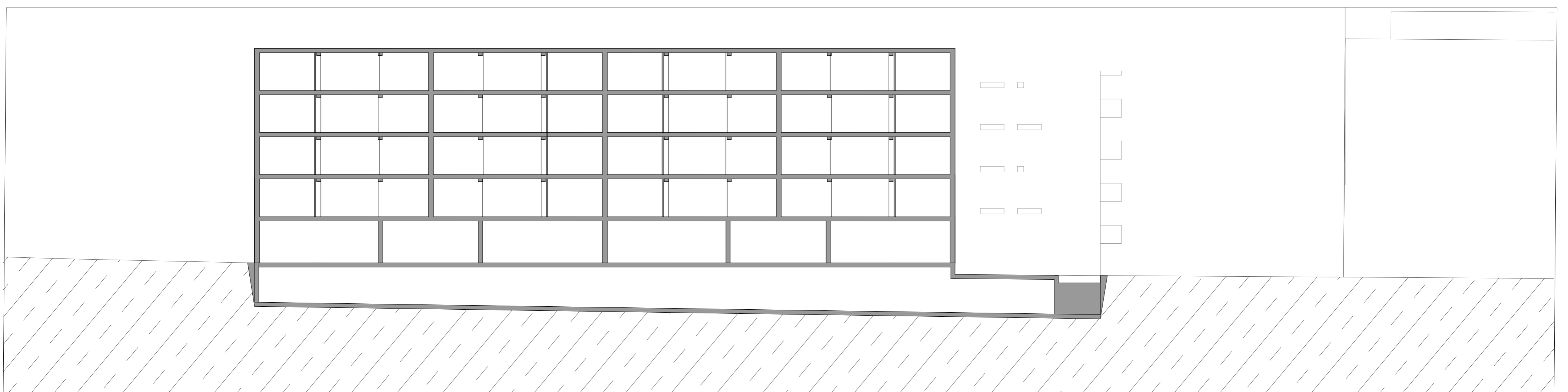
## 03



ESC. 1/200 | PLANTA PISO TIPO



PERFIL AA



PERFIL BB

# HABITAÇÃO COLECTIVA

UM SENTIDO COLECTIVO DO HABITAR

esc. 1/200

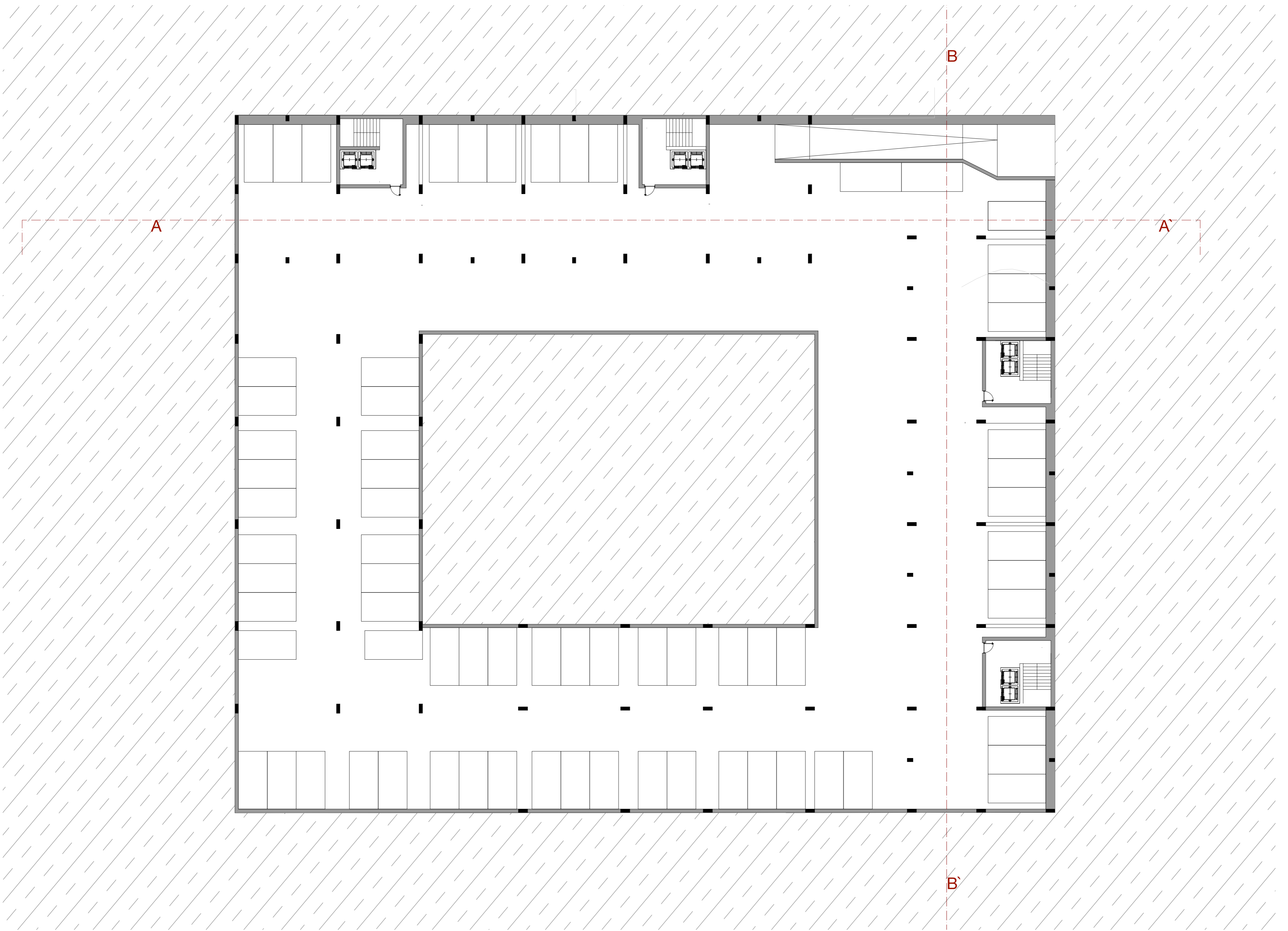
Portela de Sintra . Sintra

Laboratório de Projecto III . MIINT

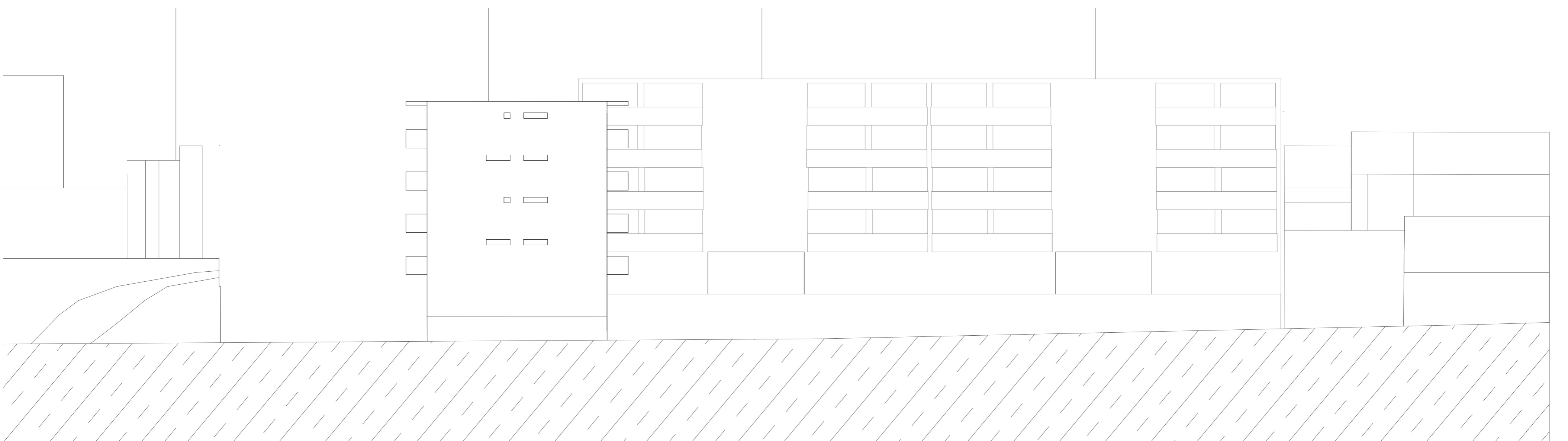
Turma B . 2020/2021

Catarina Brito . nº 20181287

# 04



ESC. 1/200 | PLANTA DO ESTACIONAMENTO



ALÇADO Rua Pedro de Cintra

# Habitação Coletiva

UM SENTIDO COLECTIVO DO HABITAR

esc. 1/50

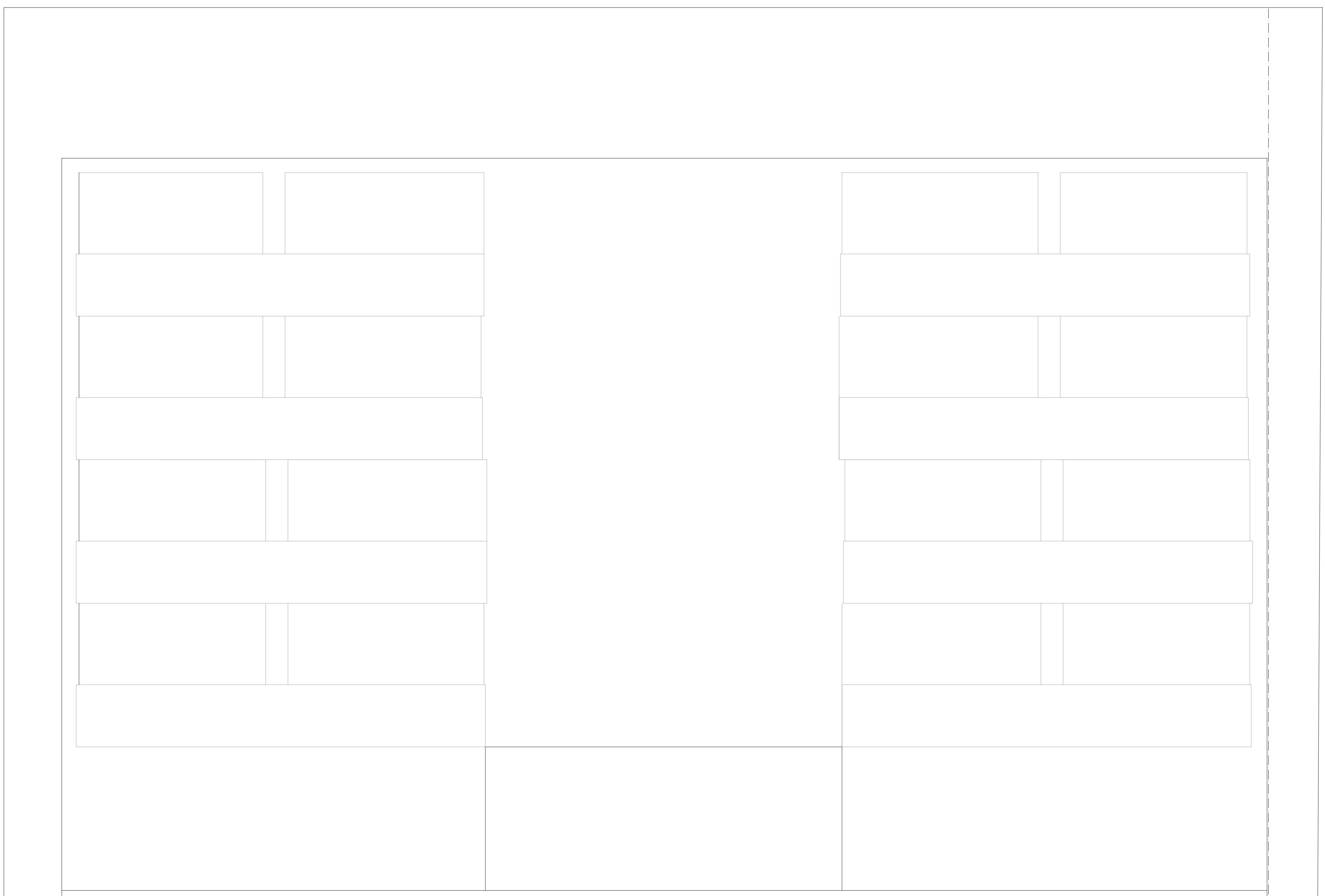
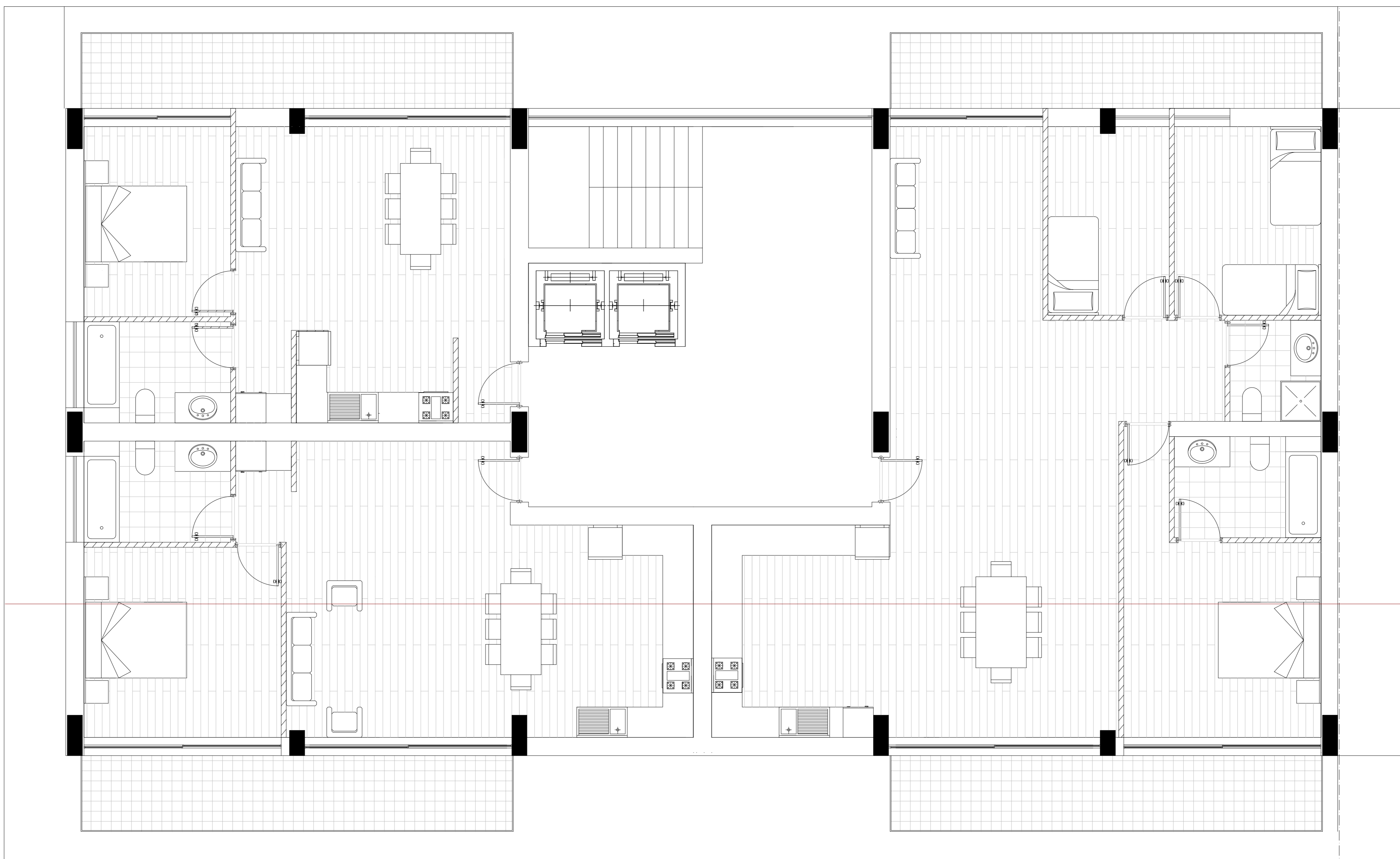
Portela de Sintra . Sintra

## 05

Laboratório de Projecto III . MIARQ | MIINT

Turma B . 2020/2021

Catarina Brito . nº 20181287



ALÇADO | ESC. 1:50

CORTE | ESC. 1:50

TITULO / CONCEITO

UM SENTIDO COLECTIVO DO HABITAR

esc. 1/50

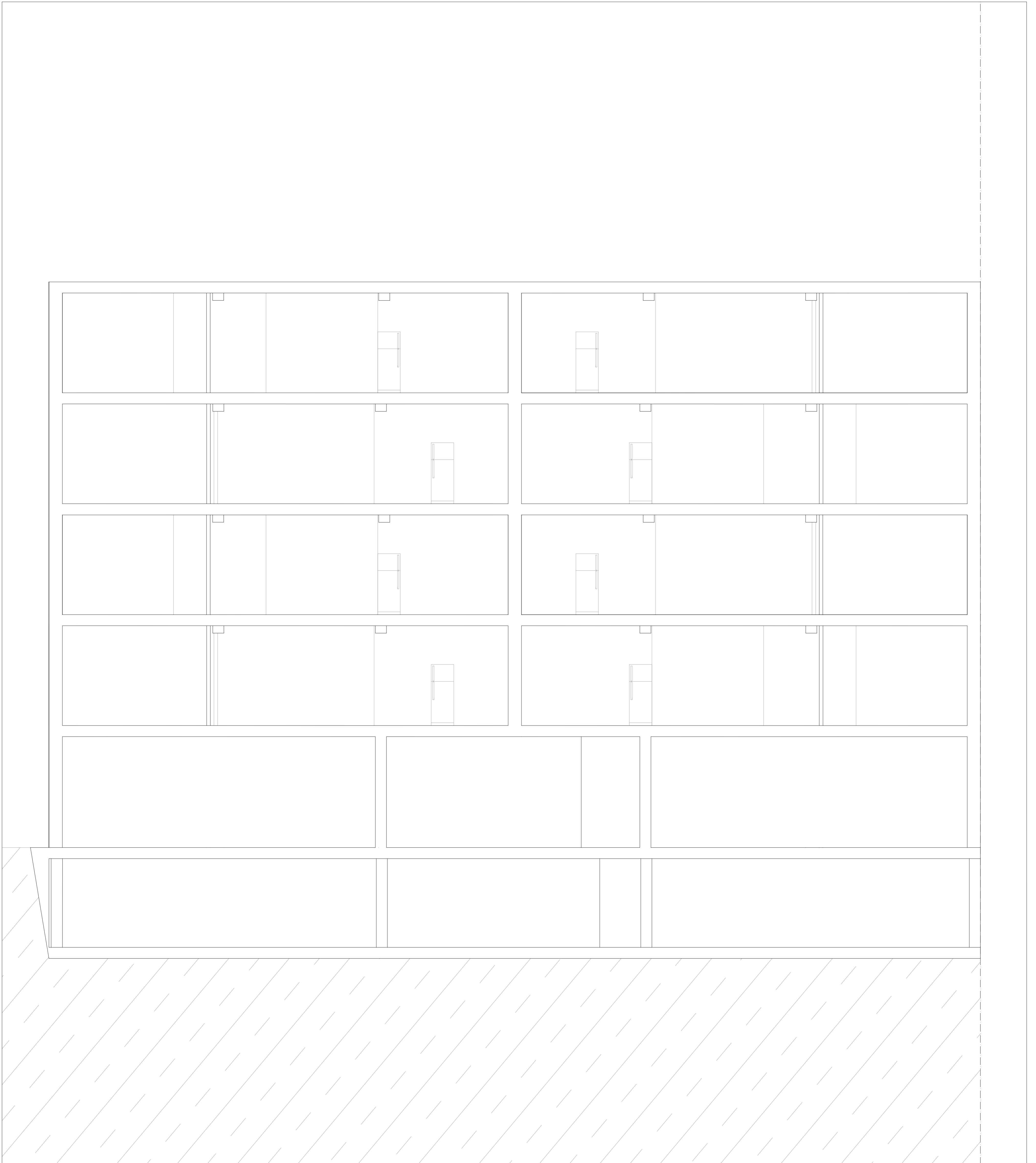
Portela de Sintra . Sintra

05A

Laboratório de Projecto III . MIARQ | MIINT

Turma B . 2020/2021

Catarina Brito . nº 20181287



CORTE | ESC. 1:50