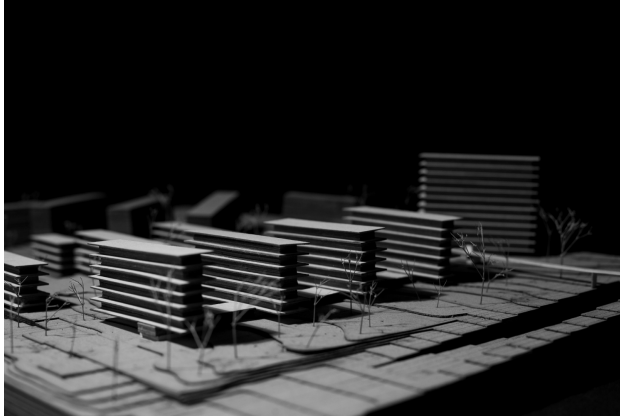


# Integrated Master in Architecture

Concentration in Integrated Architecture



## 4<sup>th</sup> Year \_ Integrated Design Studio I + Integrated Design Studio II

**Lisbon School of Architecture | Universidade de Lisboa**  
Academic Year 2025 - 2026

# 1.THEME

## *The Architecture of the City*

(Re)designing the current city, in response to future needs, through reflection supported by the introduction of Collective Housing and Equipment, as well as the design and qualification of public space.

## 2. INTERVENTION TERRITORIES

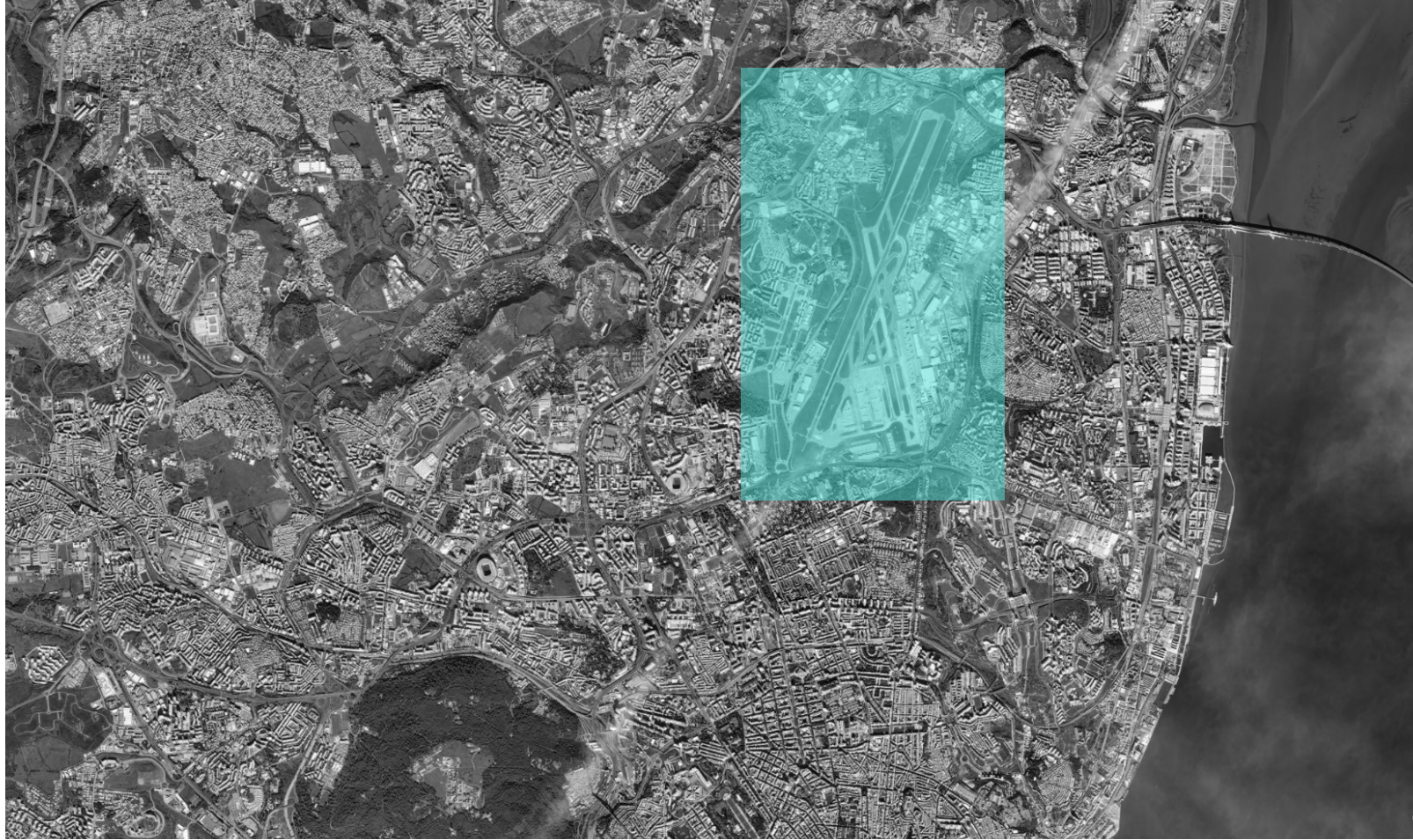
***MONTIJO*** – *River Front*

***LISBON*** – *Lisbon Airport*



**MONTIJO - River Front**





**LISBON - Lisbon Airport**

4<sup>th</sup> Year

Class **A**  
Hugo Farias

Class **B**  
Pedro Rodrigues

Class **C**  
António Leite

Class **D**  
Miguel Baptista-Bastos

Class **E**  
José Nuno Beirão

Class **F**  
Tiago Mota Saraiva

**Montijo**  
River Front

**Lisbon**  
Lisbon Airport

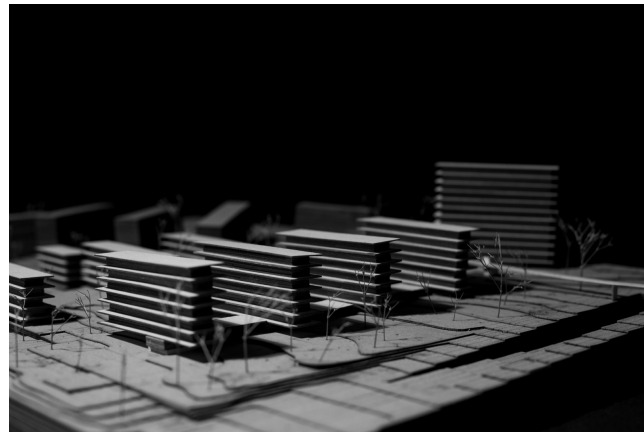
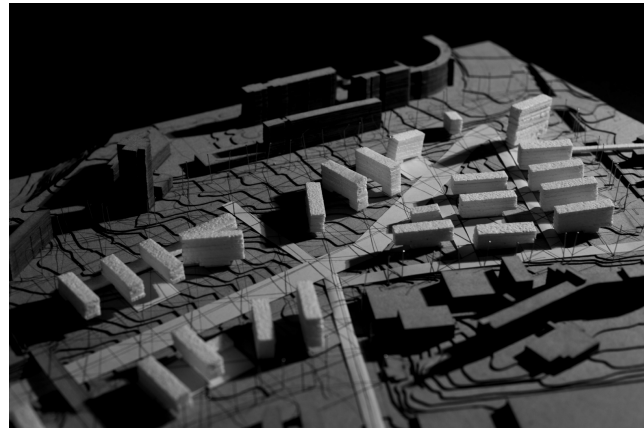
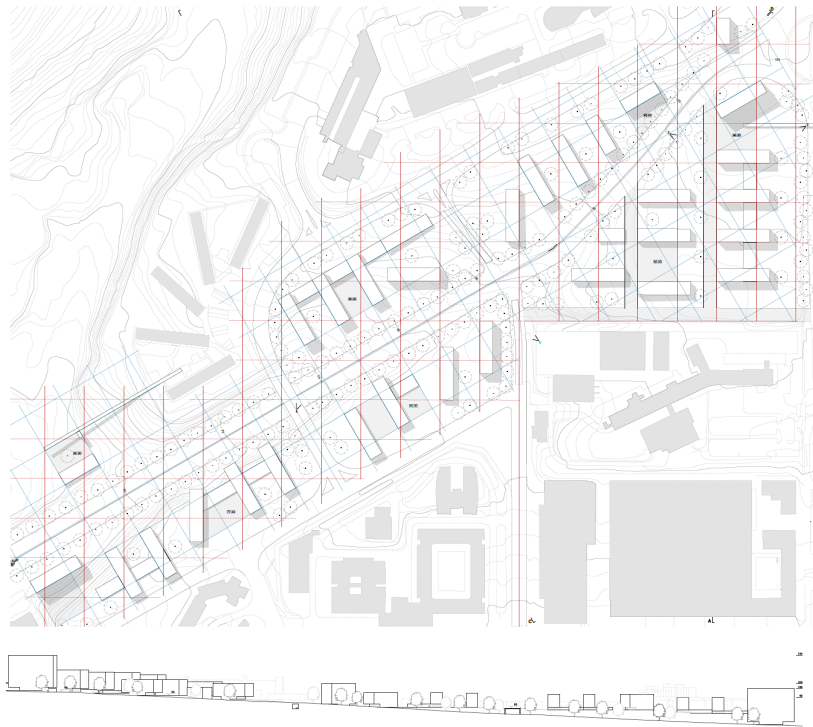
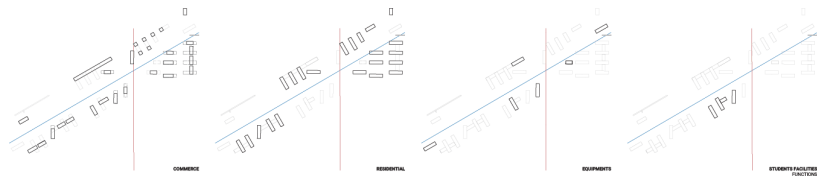
# 3. PROGRAM

*1<sup>st</sup> Semester:* **Urban Project:**

*From City Redesign to Collective Housing*

*2<sup>nd</sup> Semester:* **Architectural Project:**

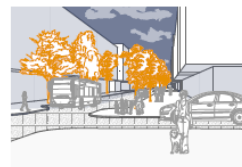
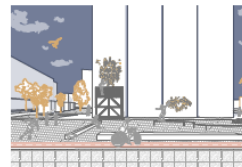
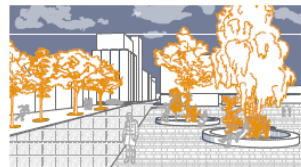
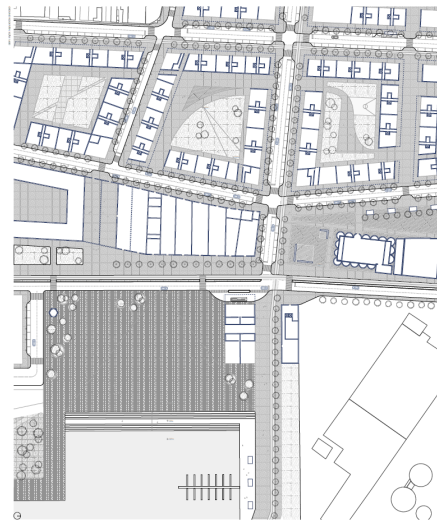
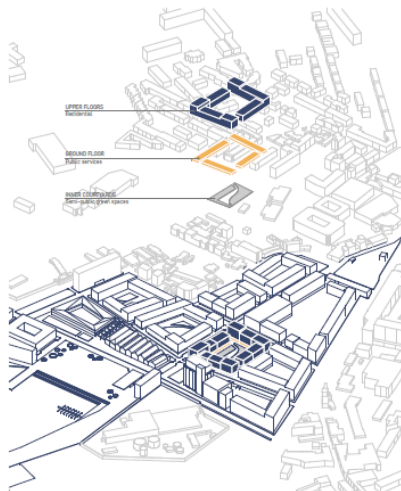
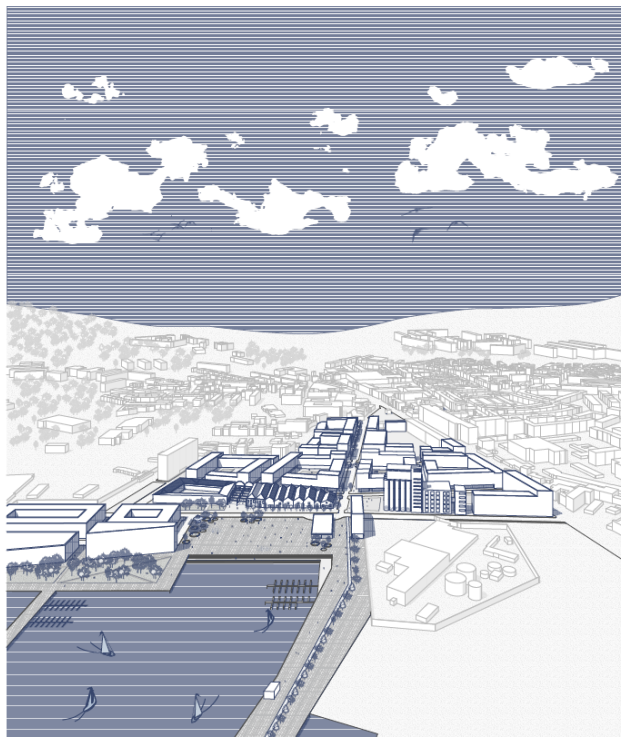
*Public Equipment as a structuring element in the City*



from scale 1:2000 to scale 1:50

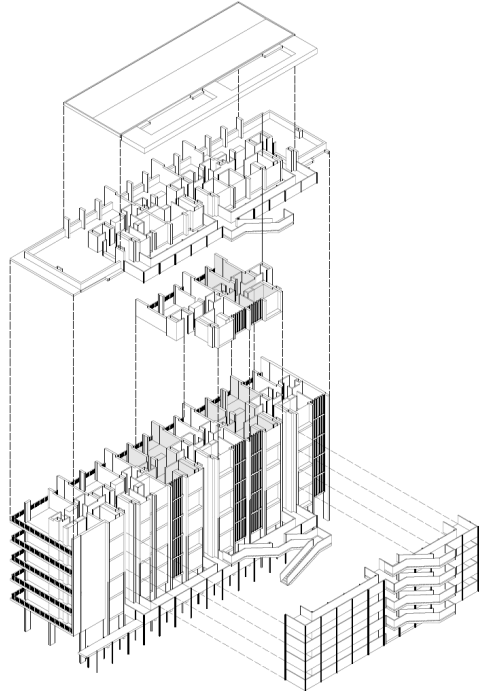
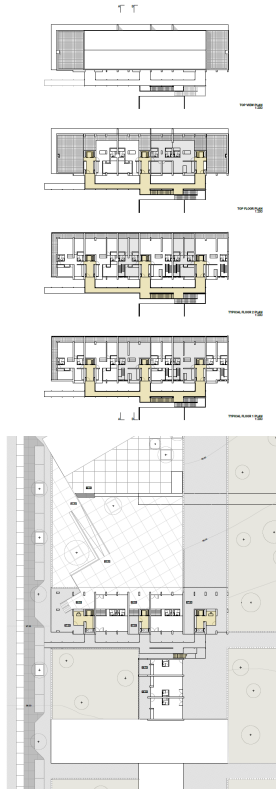
**Urban Project:** *From City Redesign to Collective Housing*





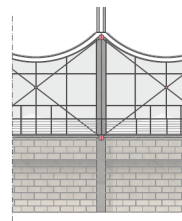
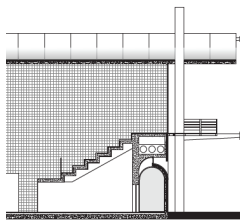
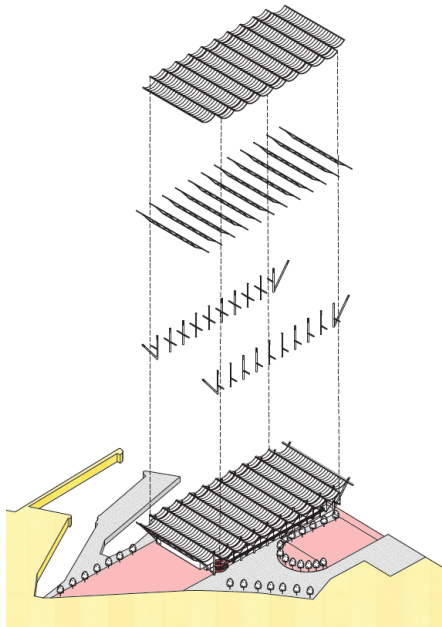
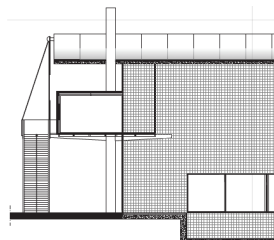
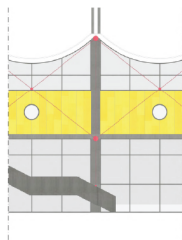
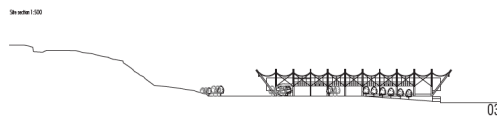
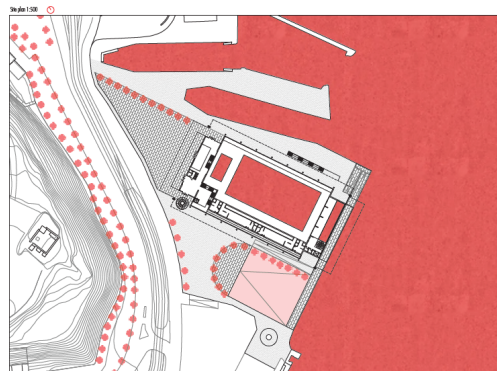
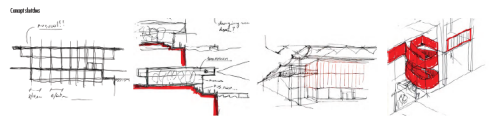
from scale 1:2000 to scale 1:50

**Urban Project:** *From City Redesign to Collective Housing*



from scale 1:2000 to scale 1:50

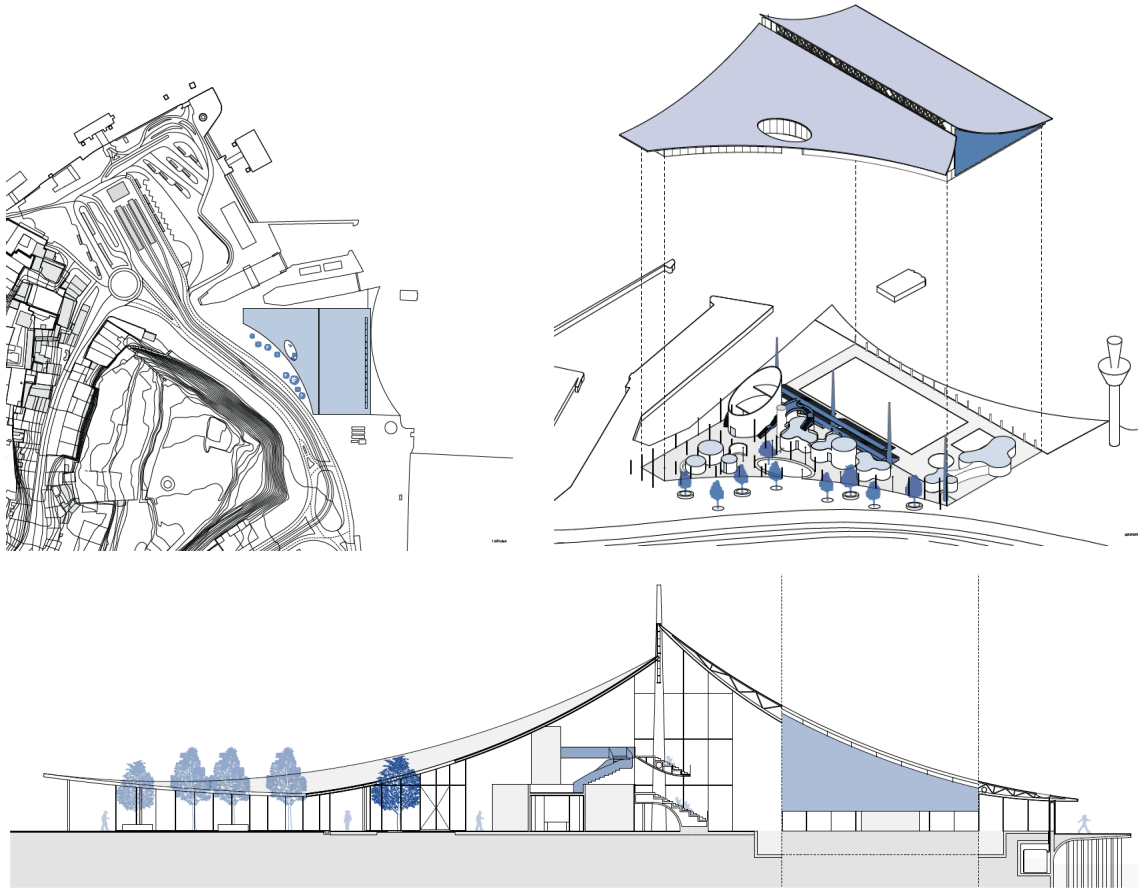
**Urban Project:** *From City Redesign to Collective Housing*



from scale 1:500 to scale 1:20

**Architectural Project:** *Public Equipment as a structuring element in the City*





from scale 1:500 to scale 1:20

**Architectural Project:** *Public Equipment as a structuring element in the City*

All the Classes share the same:

. OBJECTIVES

. CONTENTS

. METHODOLOGIES

. CALENDAR

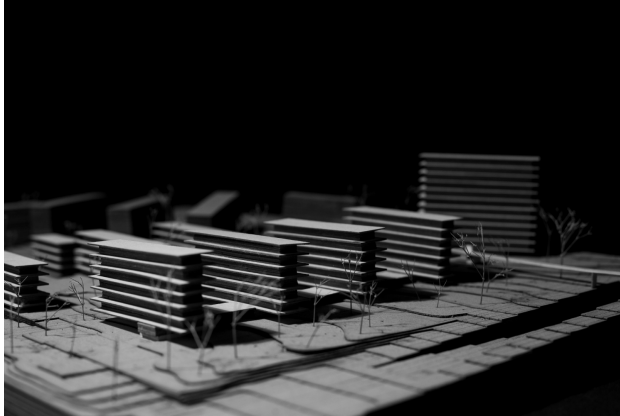
. THEORETICAL CLASSES

. CONFERENCES

. EVALUATION CRITERIA

# Integrated Master in Architecture

Concentration in Integrated Architecture



## 4<sup>th</sup> Year \_ Integrated Design Studio I + Integrated Design Studio II

Lisbon School of Architecture | Universidade de Lisboa

Academic Year 2025 - 2026