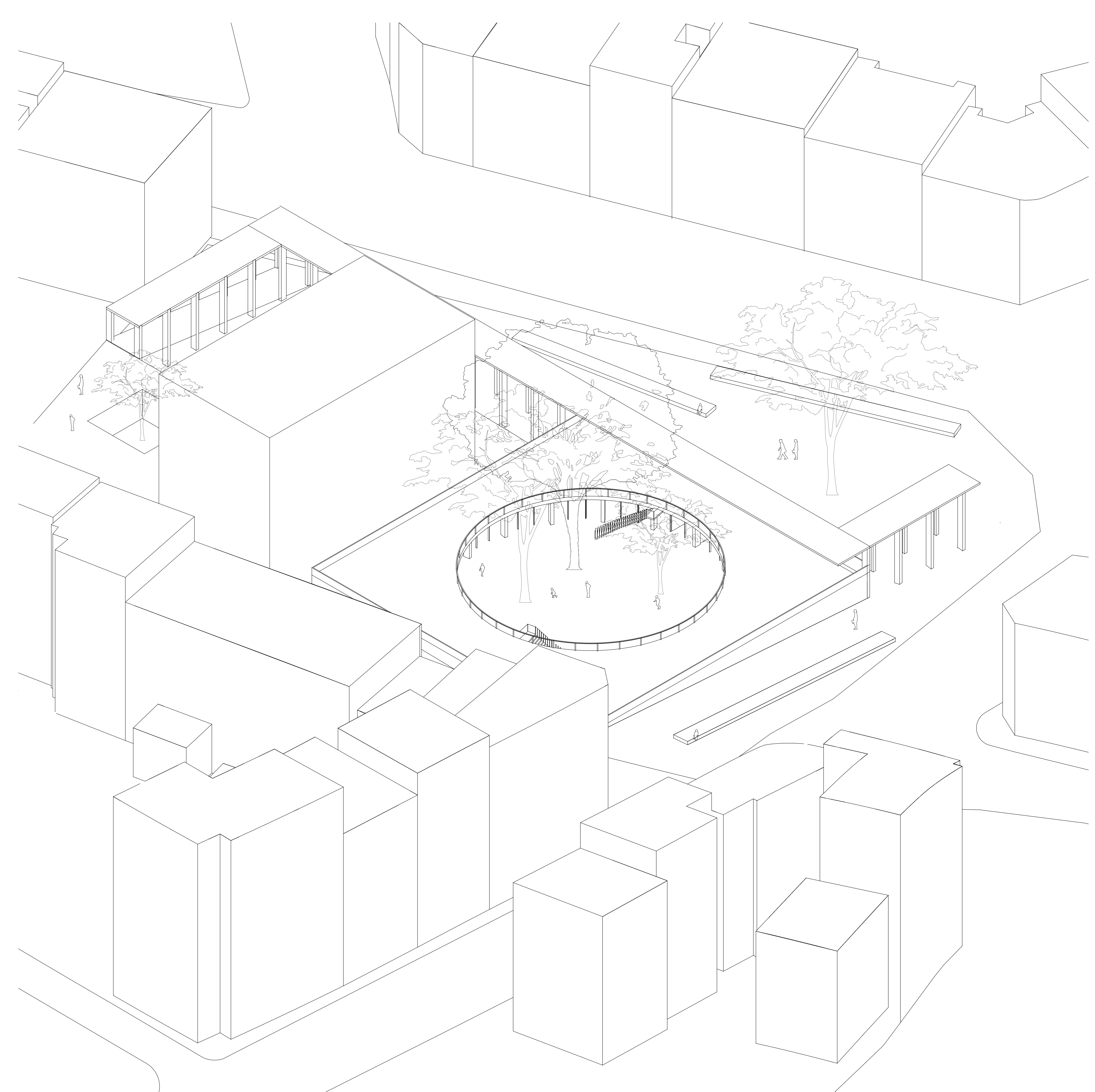
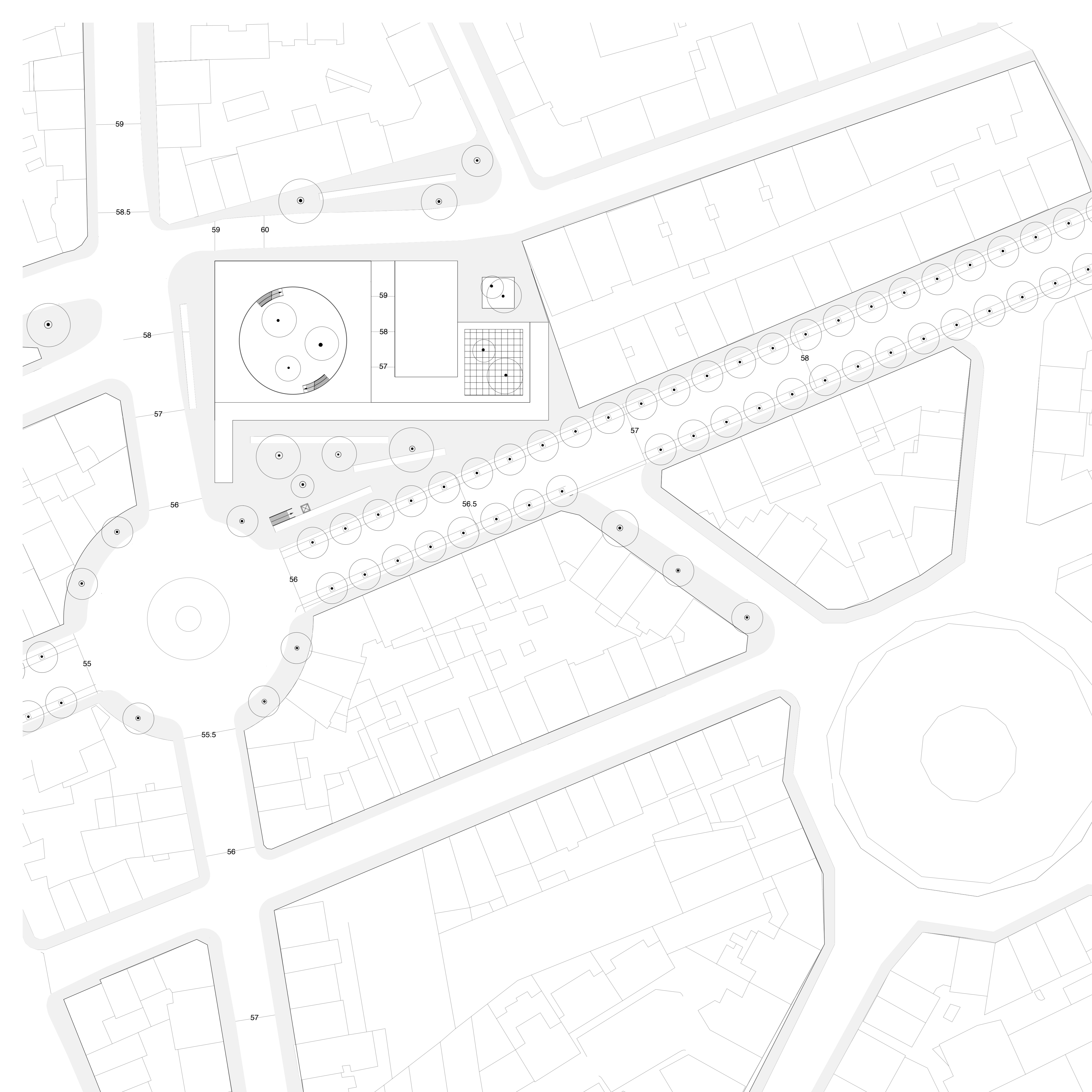


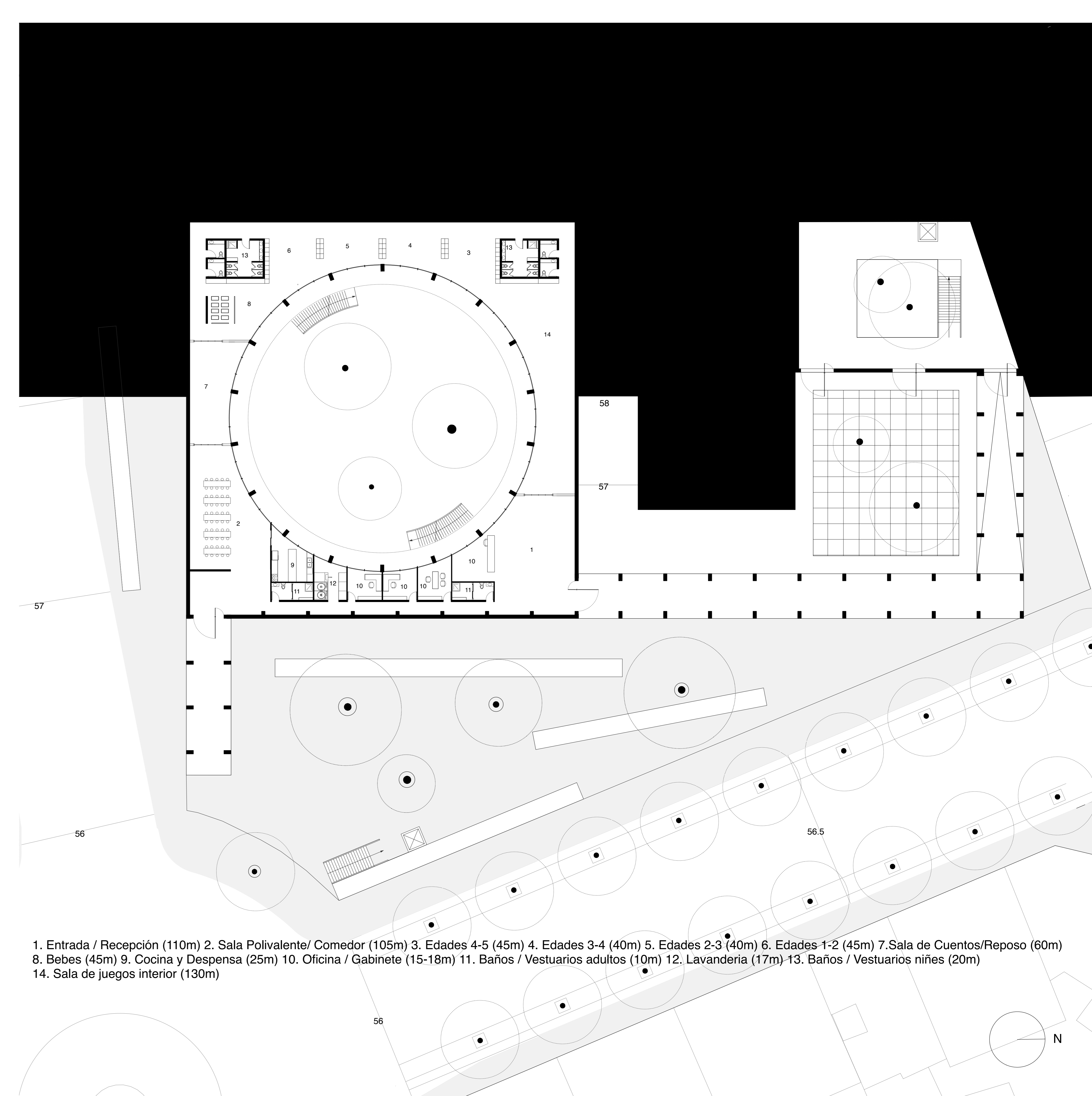
Perspectiva general 1:200



Perspectiva general 1:200

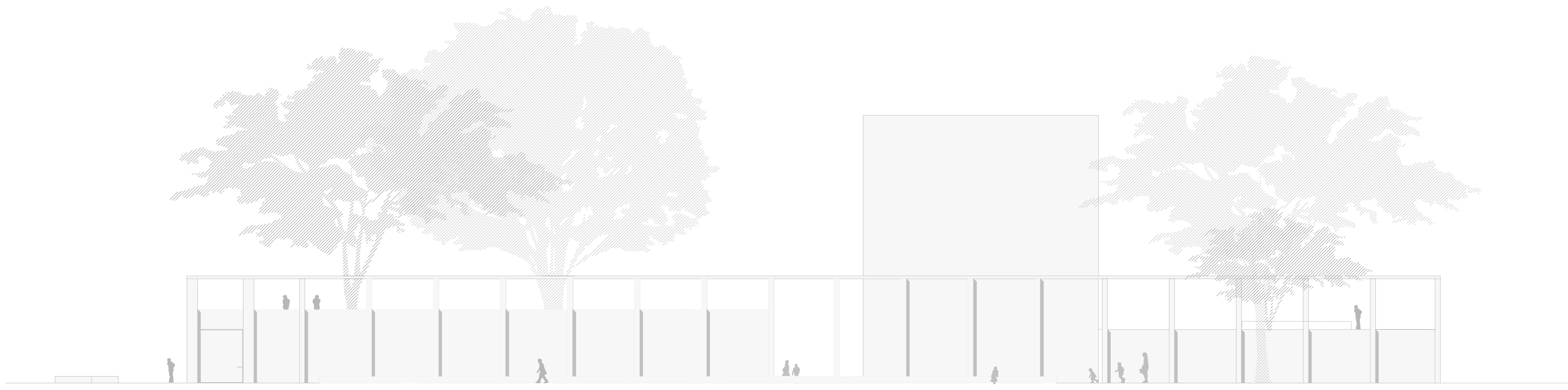


Planta 1:500



1. Entrada / Recepción (110m)
2. Sala Polivalente/ Comedor (105m)
3. Edades 4-5 (45m)
4. Edades 3-4 (40m)
5. Edades 2-3 (40m)
6. Edades 1-2 (45m)
7. Sala de Cuentos/Reposo (60m)
8. Bebes (45m)
9. Cocina y Despensa (25m)
10. Oficina / Gabinete (15-18m)
11. Baños / Vestuarios adultos (10m)
12. Lavandería (17m)
13. Baños / Vestuarios niños (20m)
14. Sala de juegos interior (130m)

Planta +58 1:200

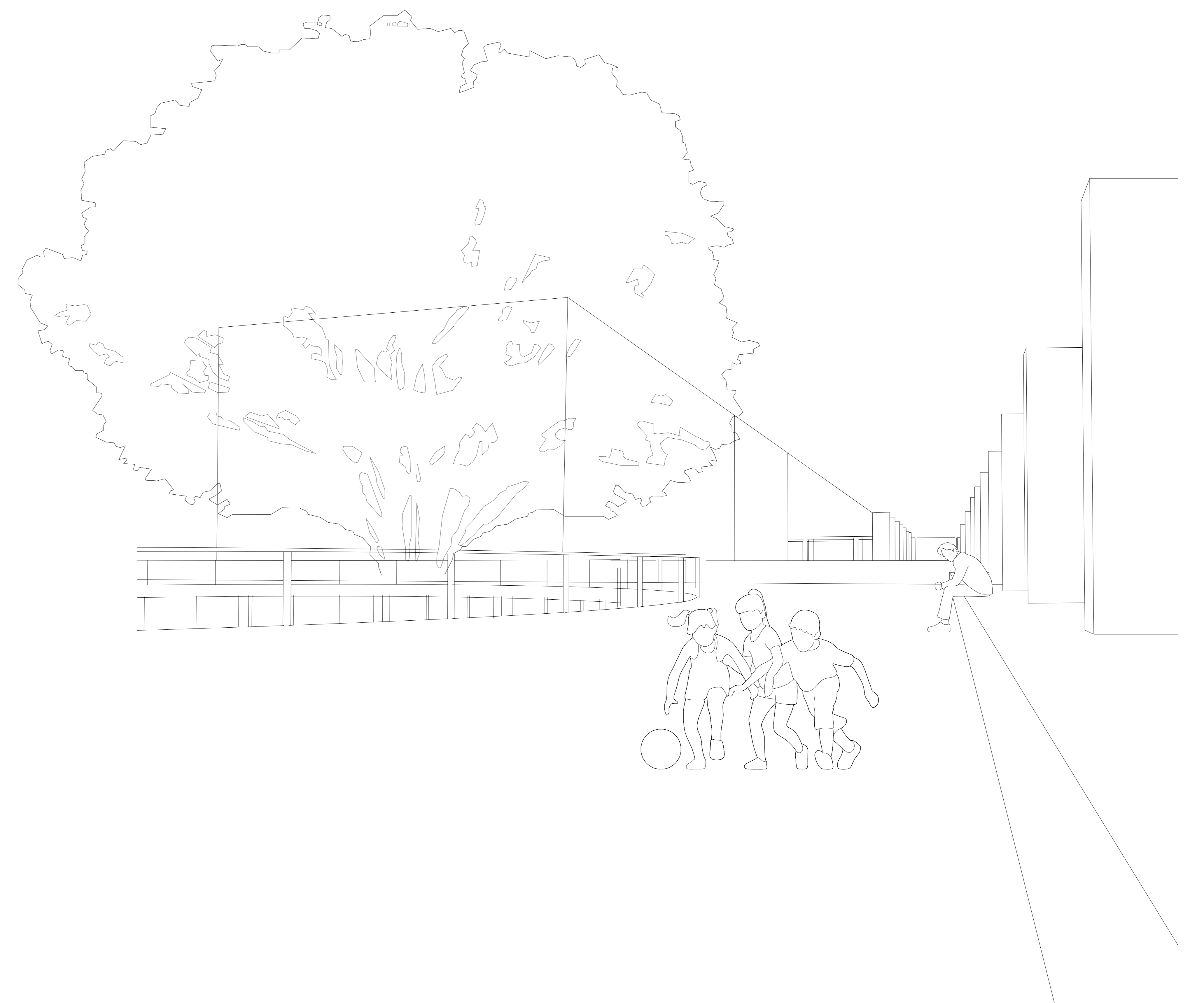


Cortes 1:200

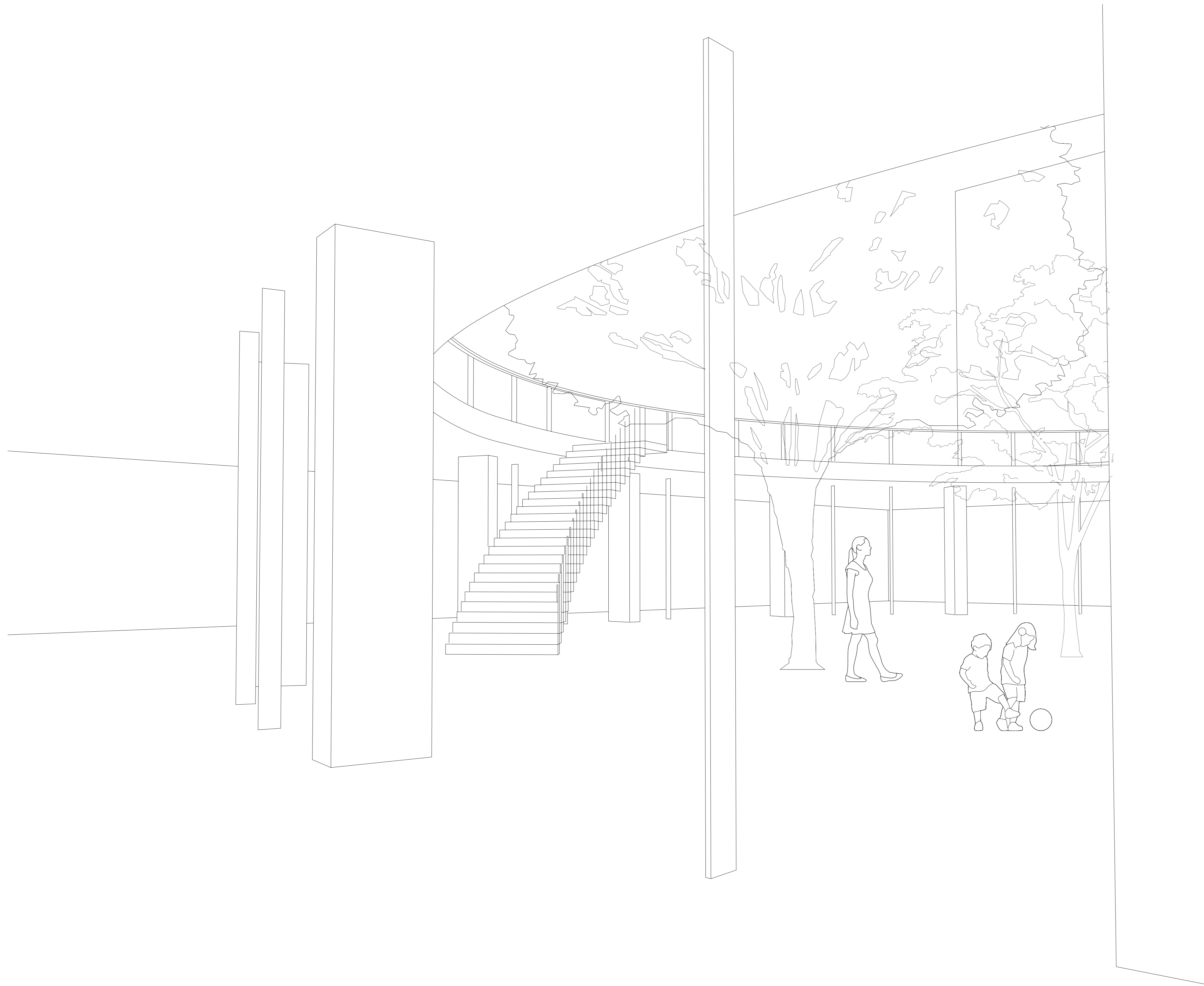
Vista 1:200



Perspectiva Exterior



Perspectiva Exterior

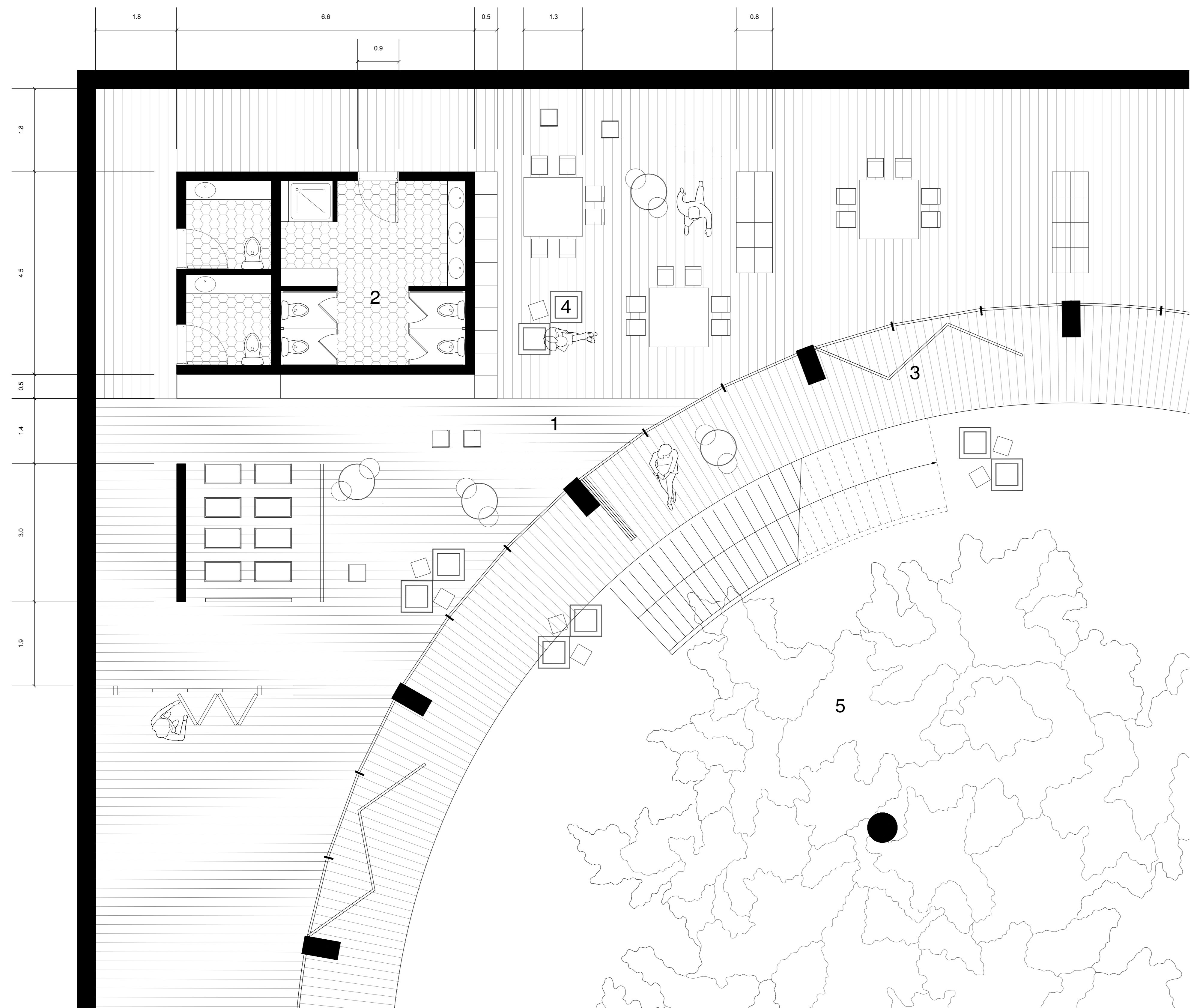


Perspectiva Interior



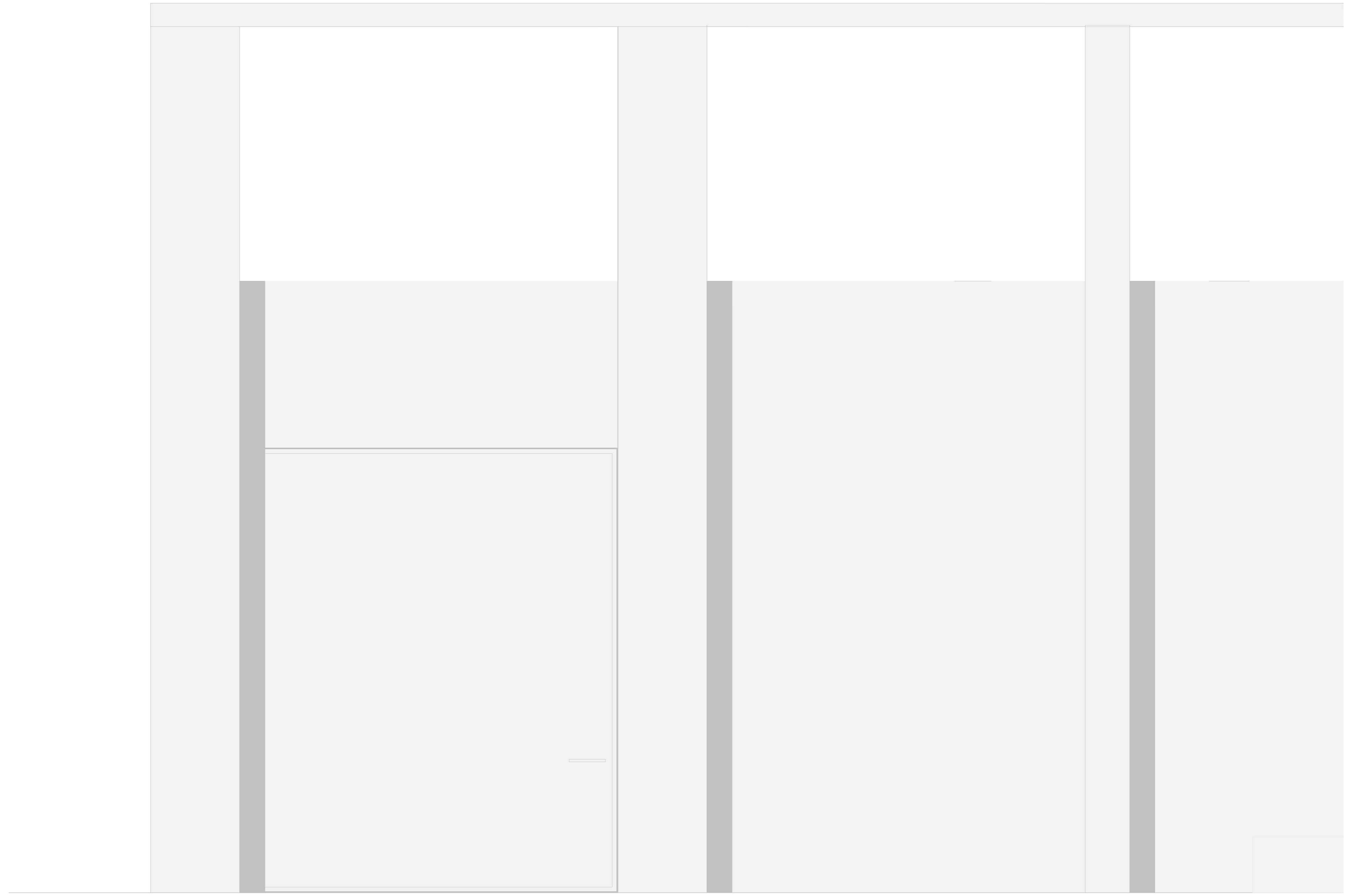
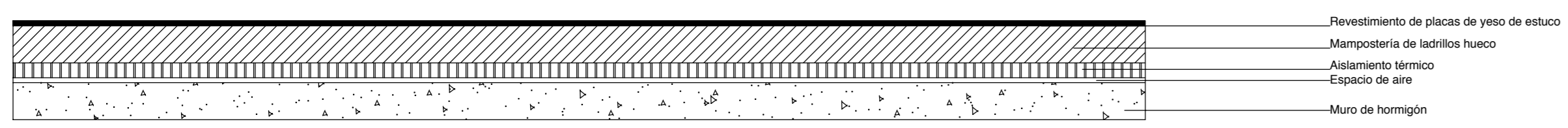
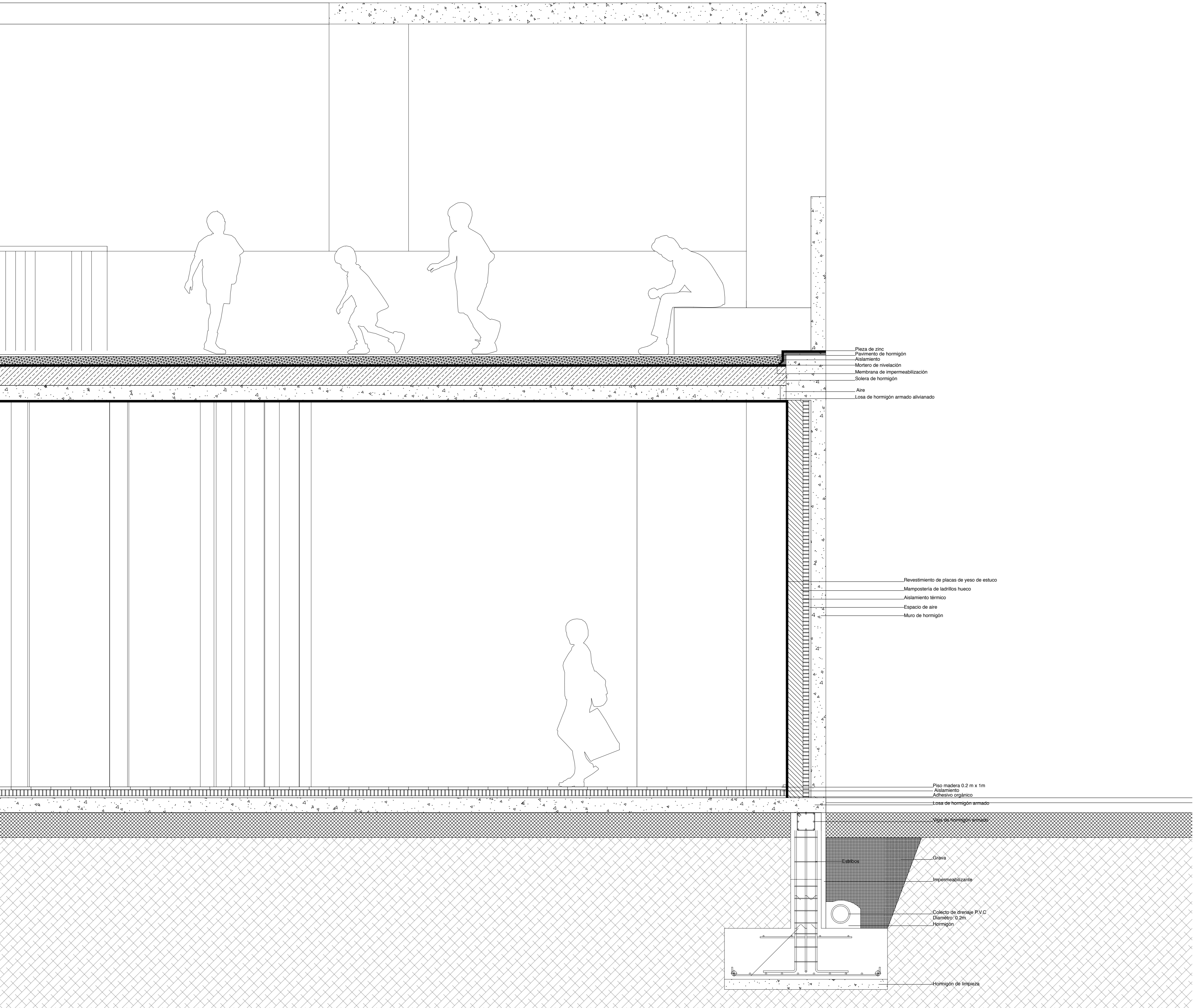
Perspectiva Interior

- 1 Piso madera, tablas 0.2 m x 1 m
- 2 Piso baldosas hexagonales
- 3 Puertas plegables de vidrio
- 4 Mobiliario movil madera
- 5 Arbol Platano



Planta 1:50

Corte 1:50



Fachada 1:20

Detalle Constructivo Corte y Planta 1:20