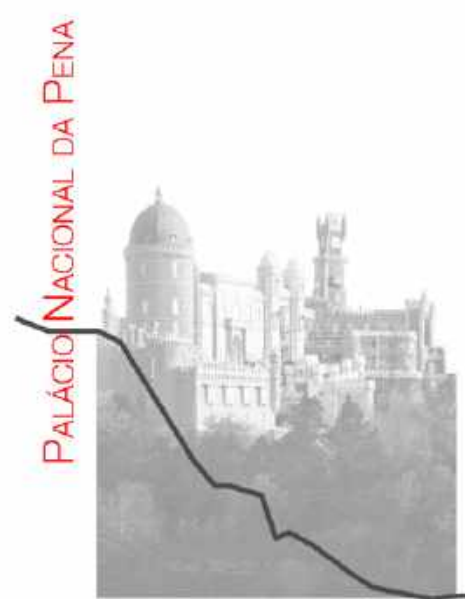
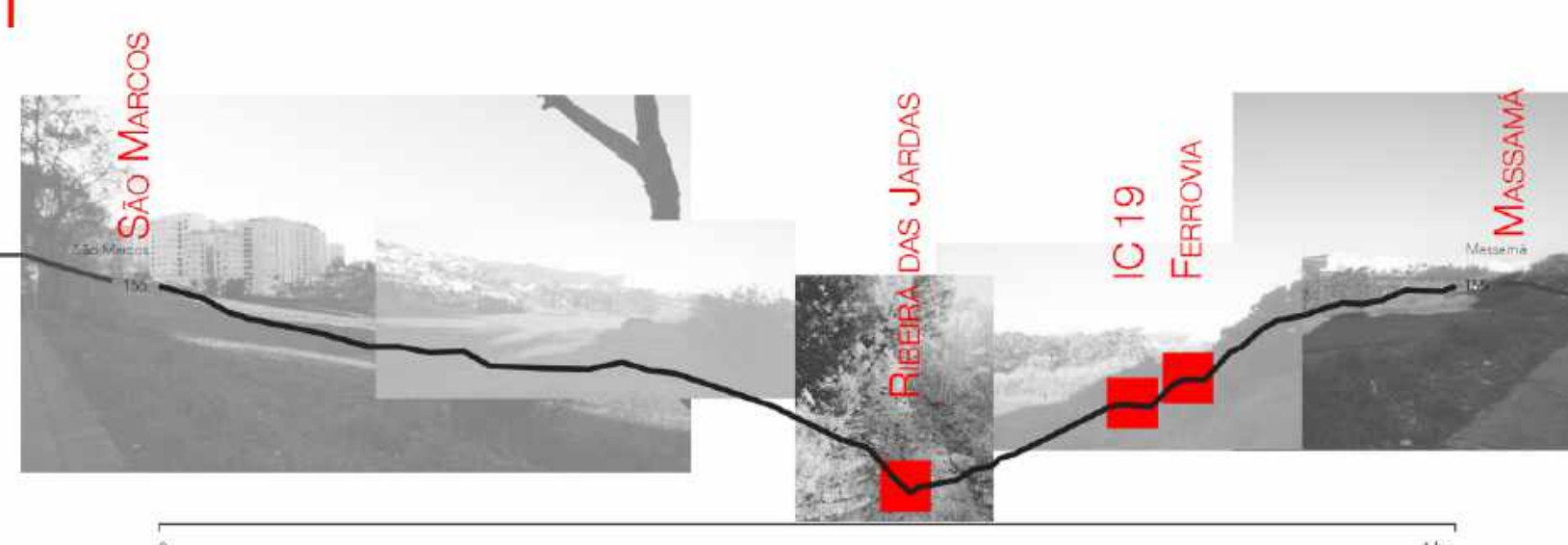


enquadramento: esquema de integração urbana
escala 1:10000



corte diagramático do vale da ribeira das Jardas
espaços abertos e principais elementos territoriais



A9 (CREL)

FERROVIA



PALACIO NACIONAL DE QUELUZ

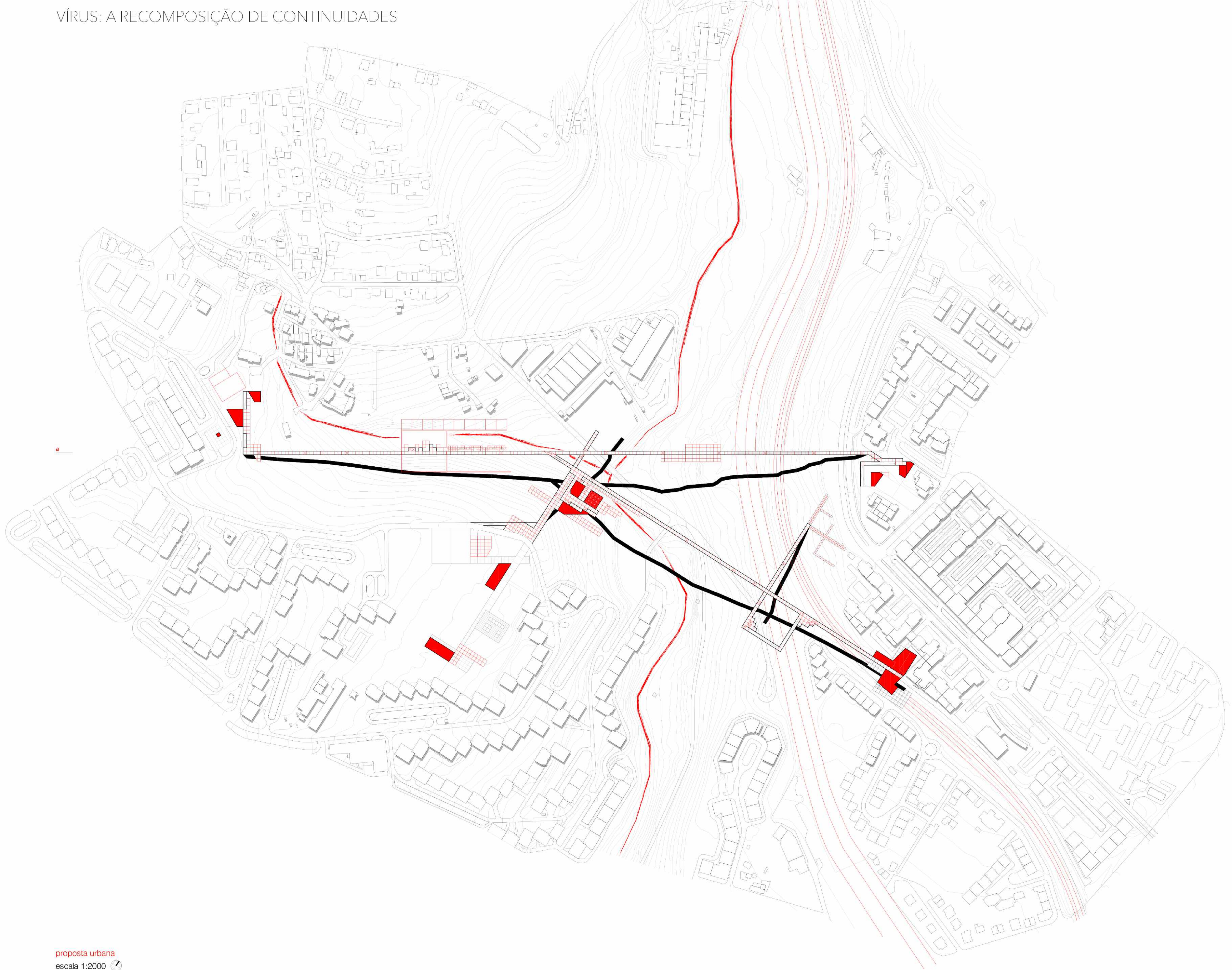


decomposição territorial do percorriavel
escala 1:20000

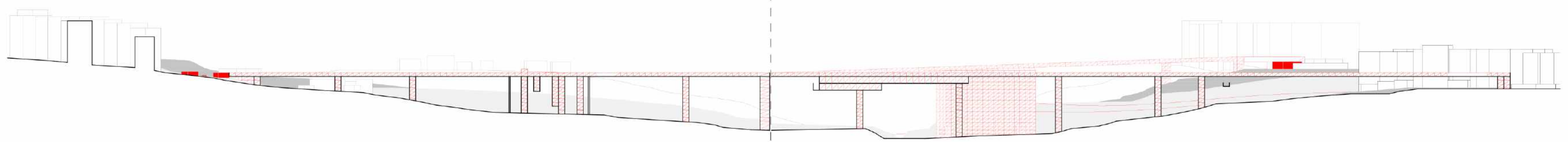


[Estrutura ecológica descontinua: cinza claro | Área ecológica estruturante: cinzento | Estrutura ecológica continua: negro]



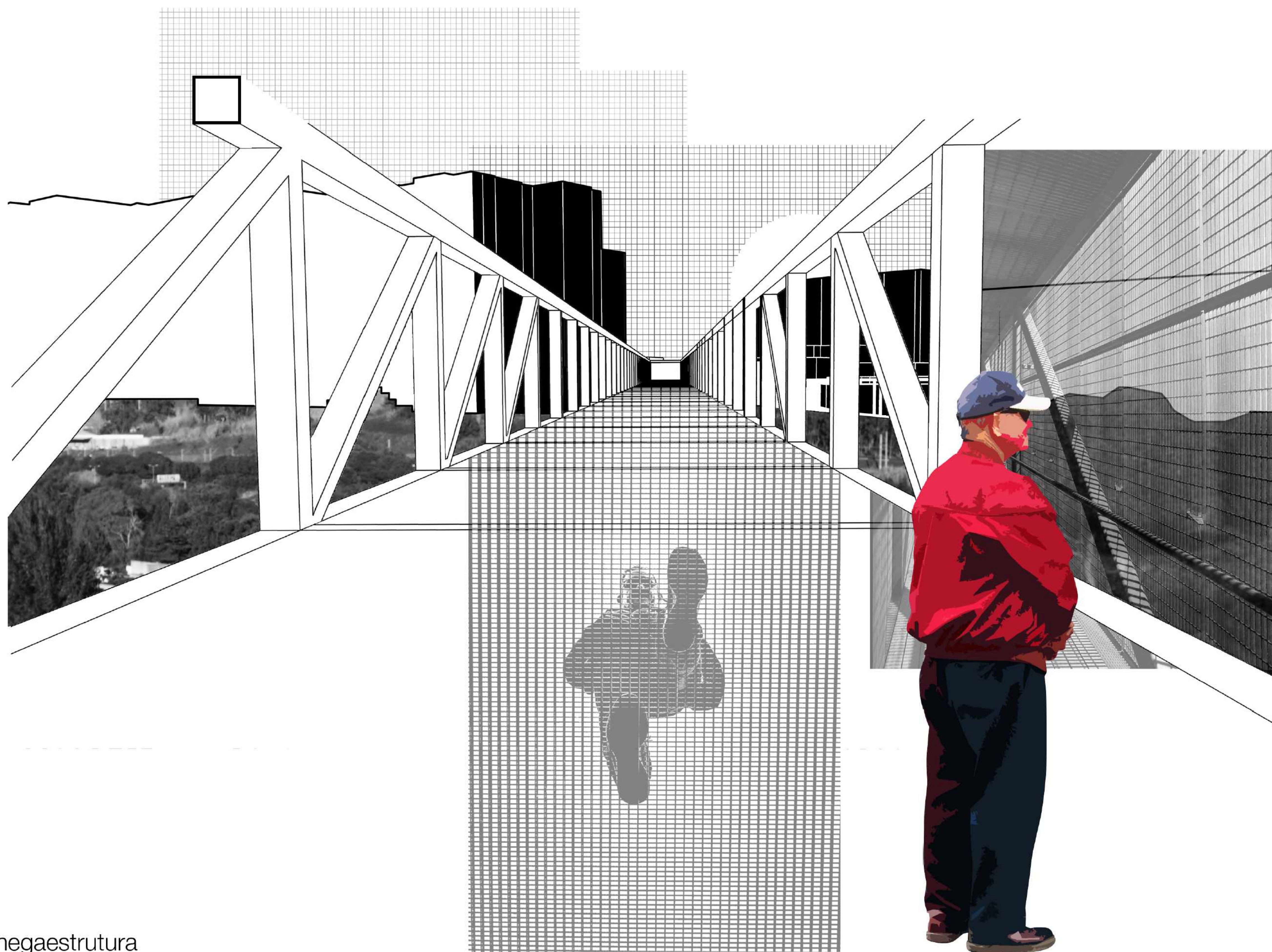


proposta urbana
escala 1:2000



corte a
escala 1:2000

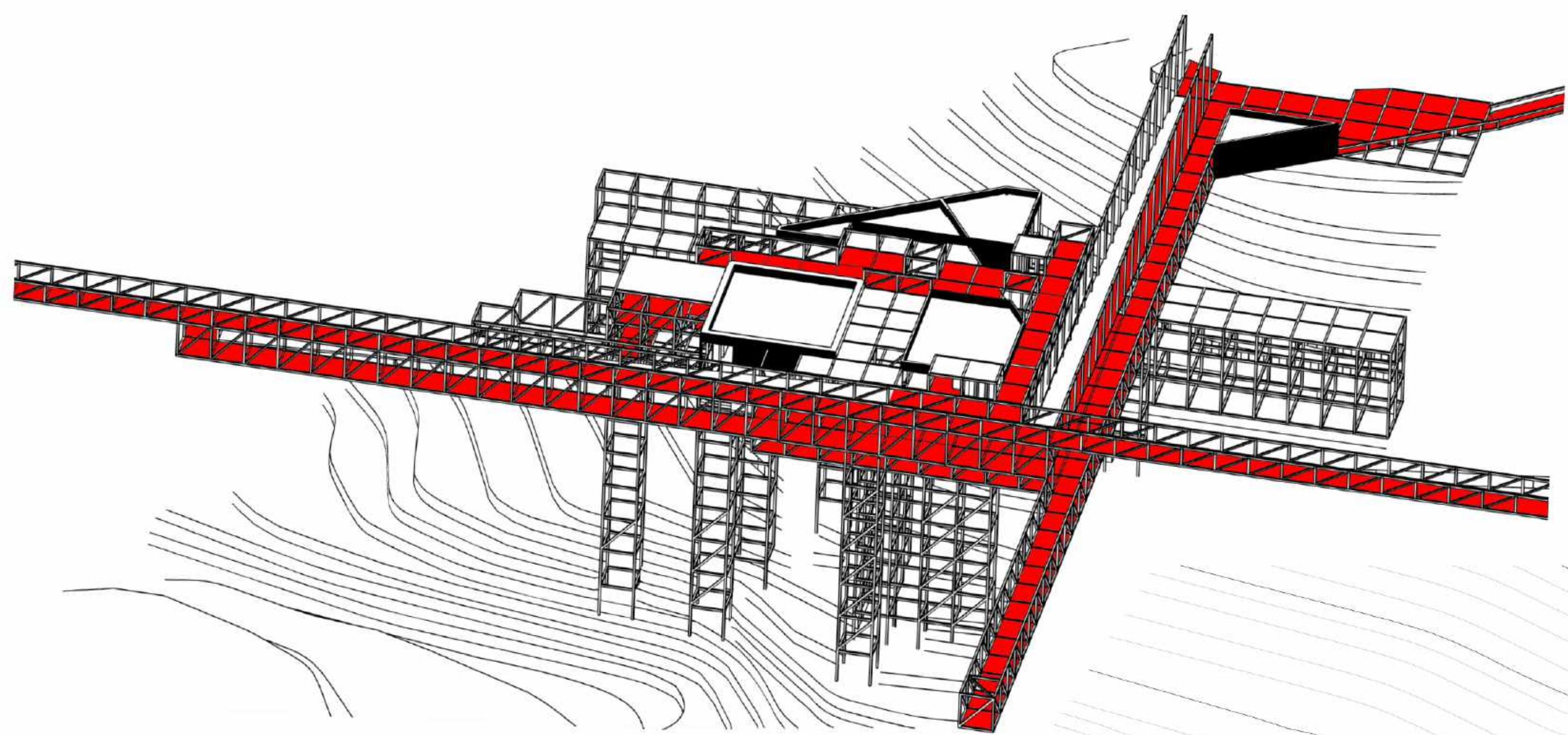
VÍRUS: A RECOMPOSIÇÃO DE CONTINUIDADES



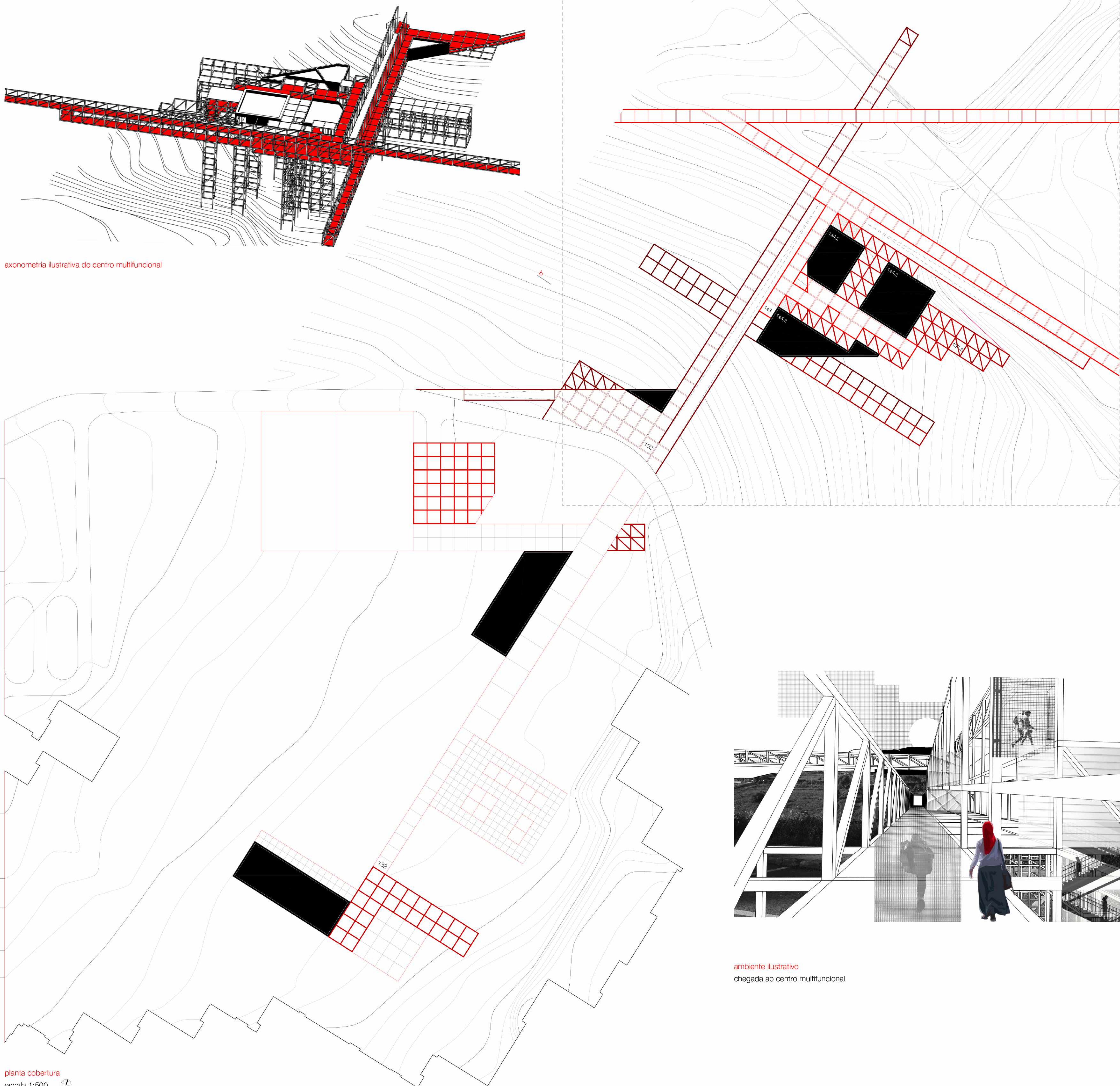
ambiente ilustrativo

atravessamento da megaestrutura

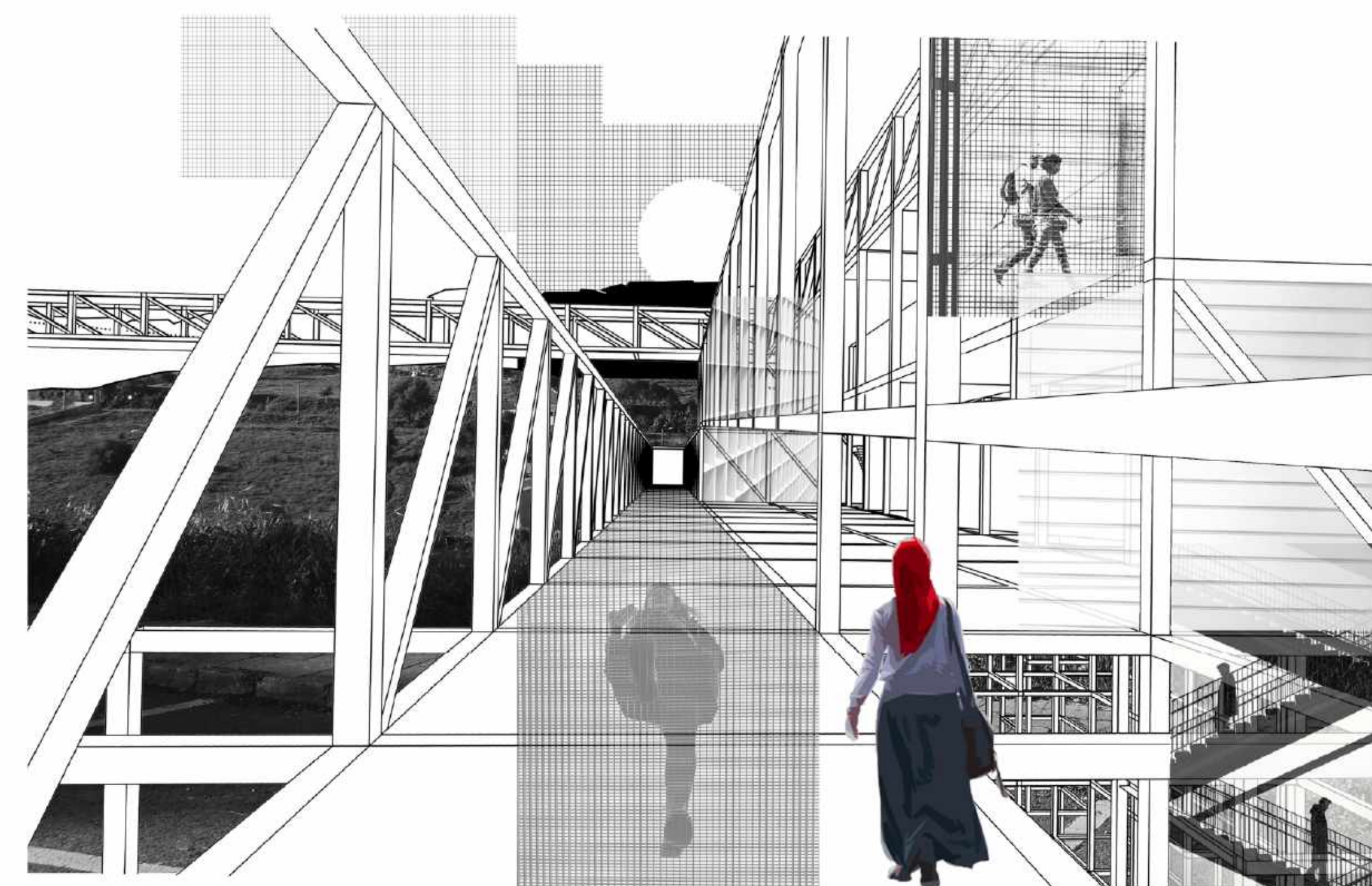
02.02 DA ARQUITETURA TRANSLÚCIDA À NOVA IMAGEM DA CIDADE
A RECOMPOSIÇÃO DE CONTINUIDADES ENTRE SÃO MARCOS E MASSAMÁ



axonometria ilustrativa do centro multifuncional



planta cobertura
escala 1:500

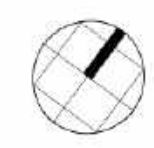


ambiente ilustrativo
chegada ao centro multifuncional

105

planta P0 + P1

escala 1:500



100

95

90

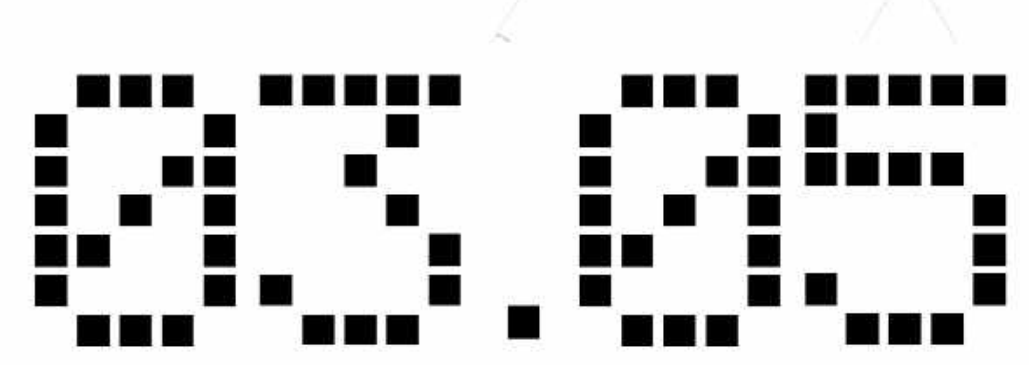
90

95

95

90

90



DA ARQUITETURA TRANSLÚCIDA À NOVA IMAGEM DA CIDADE

A RECOMPOSIÇÃO DE CONTINUIDADES ENTRE SÃO MARCOS E MASSAMÁ

O ESPAÇO DE AUDITÓRIO

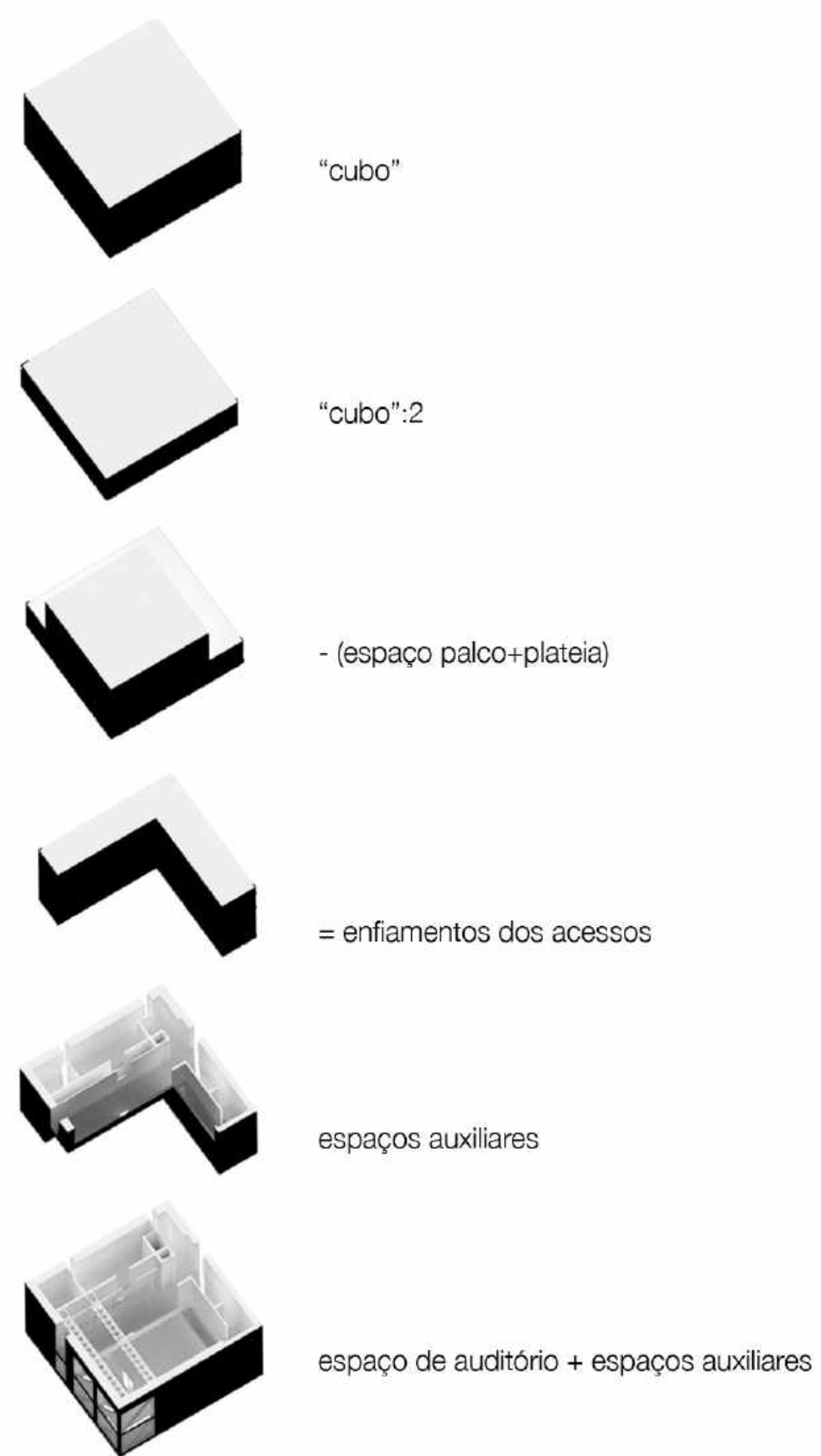
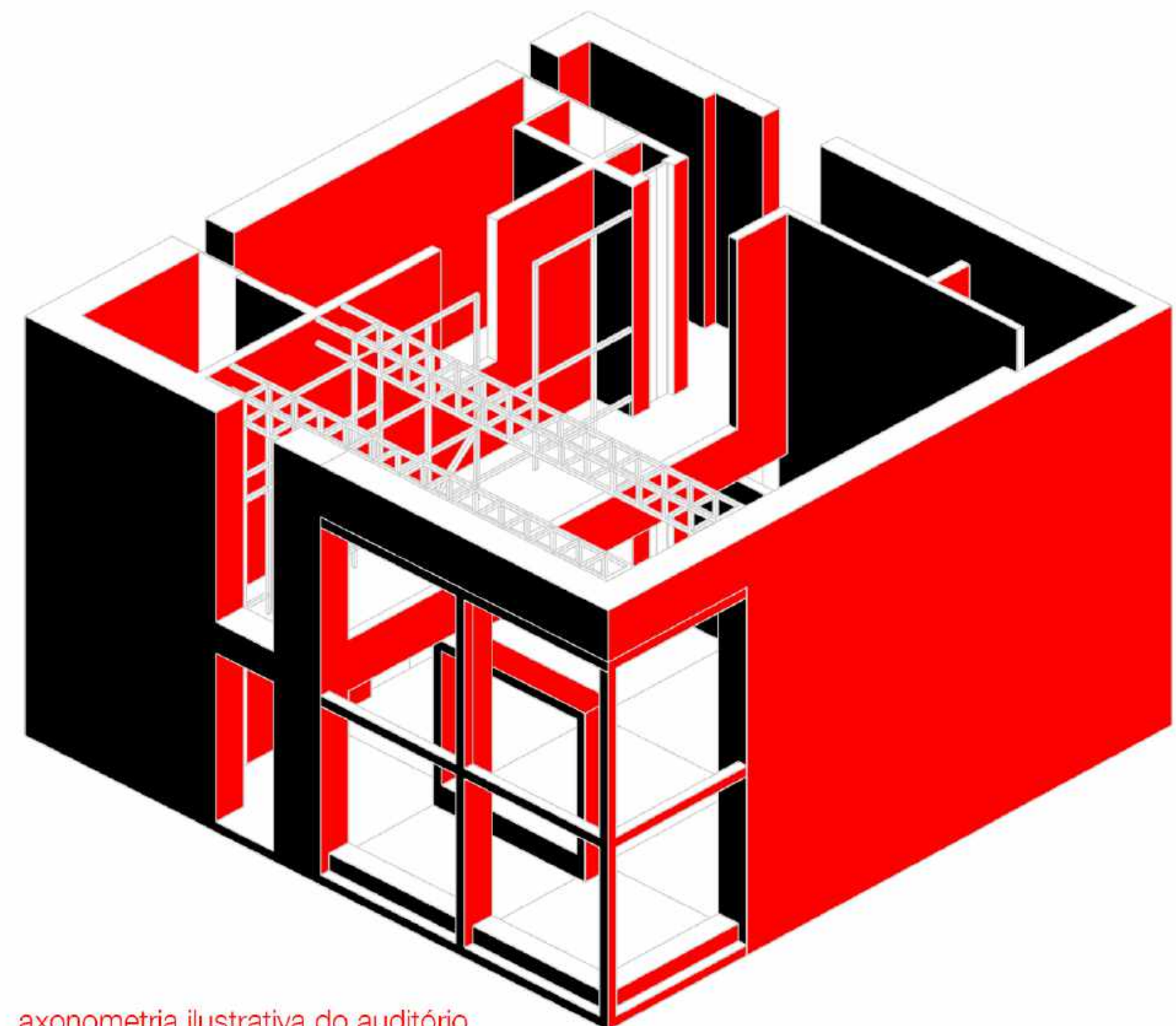


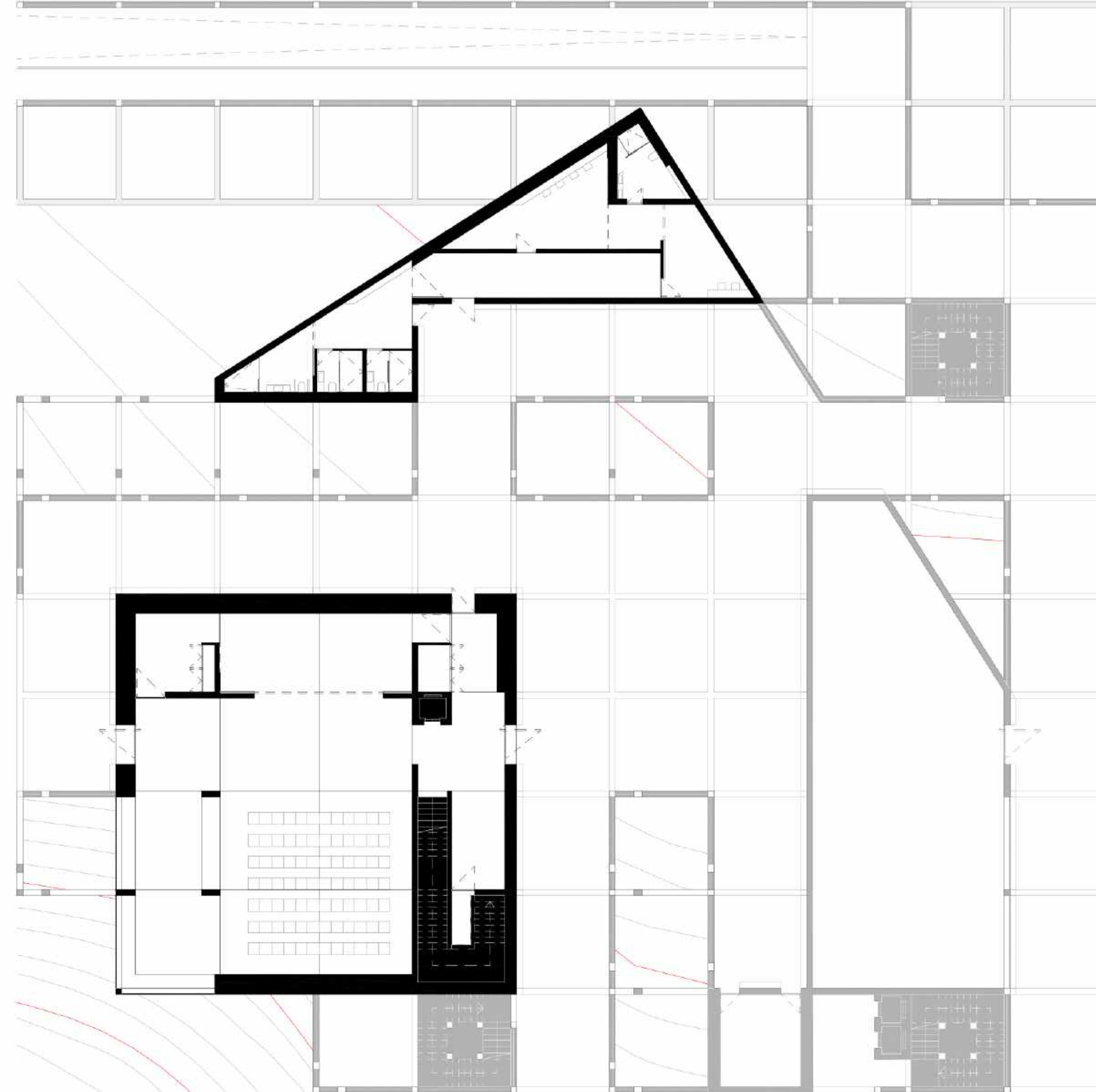
diagrama construtivo



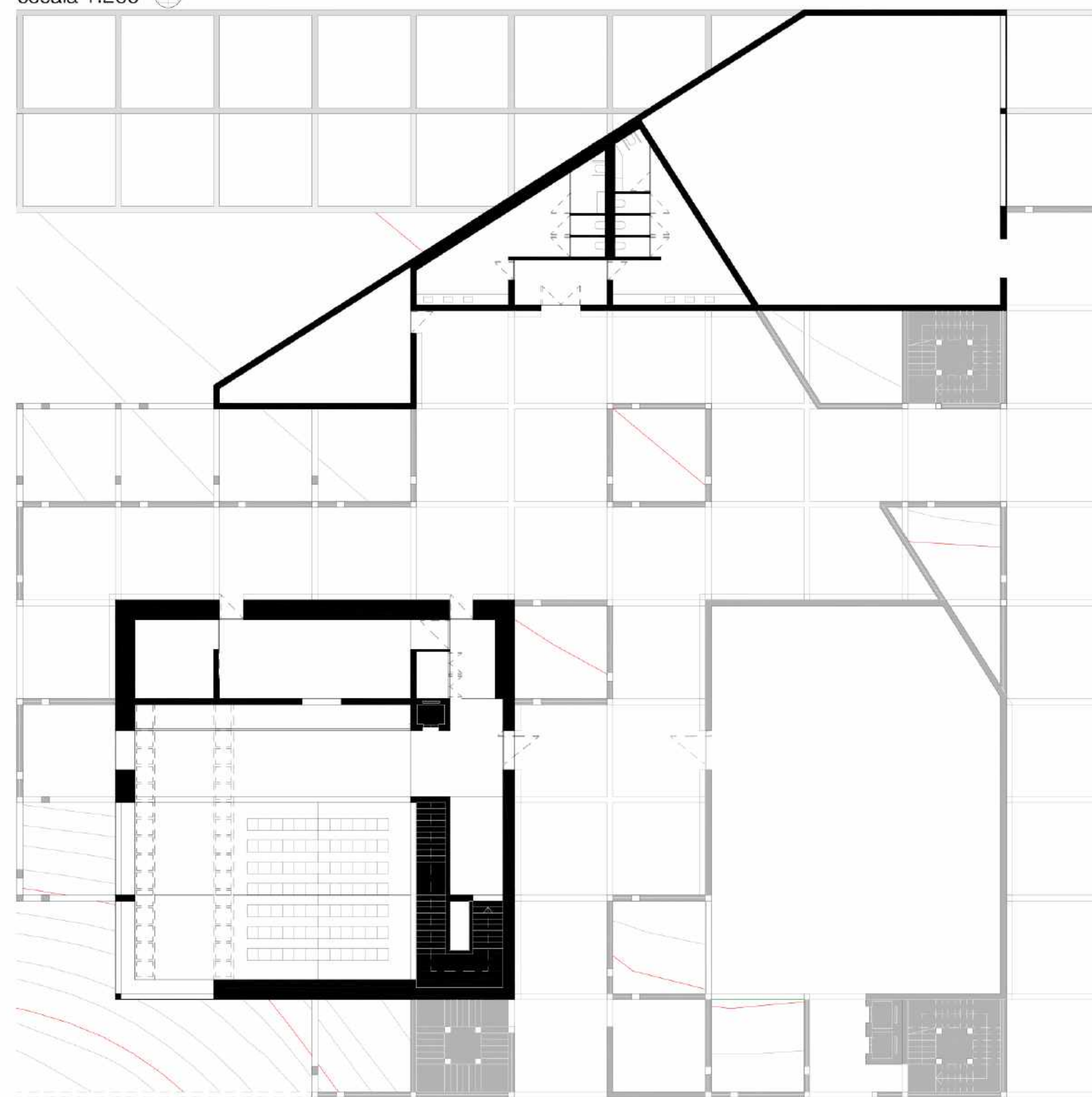
ambiente ilustrativo



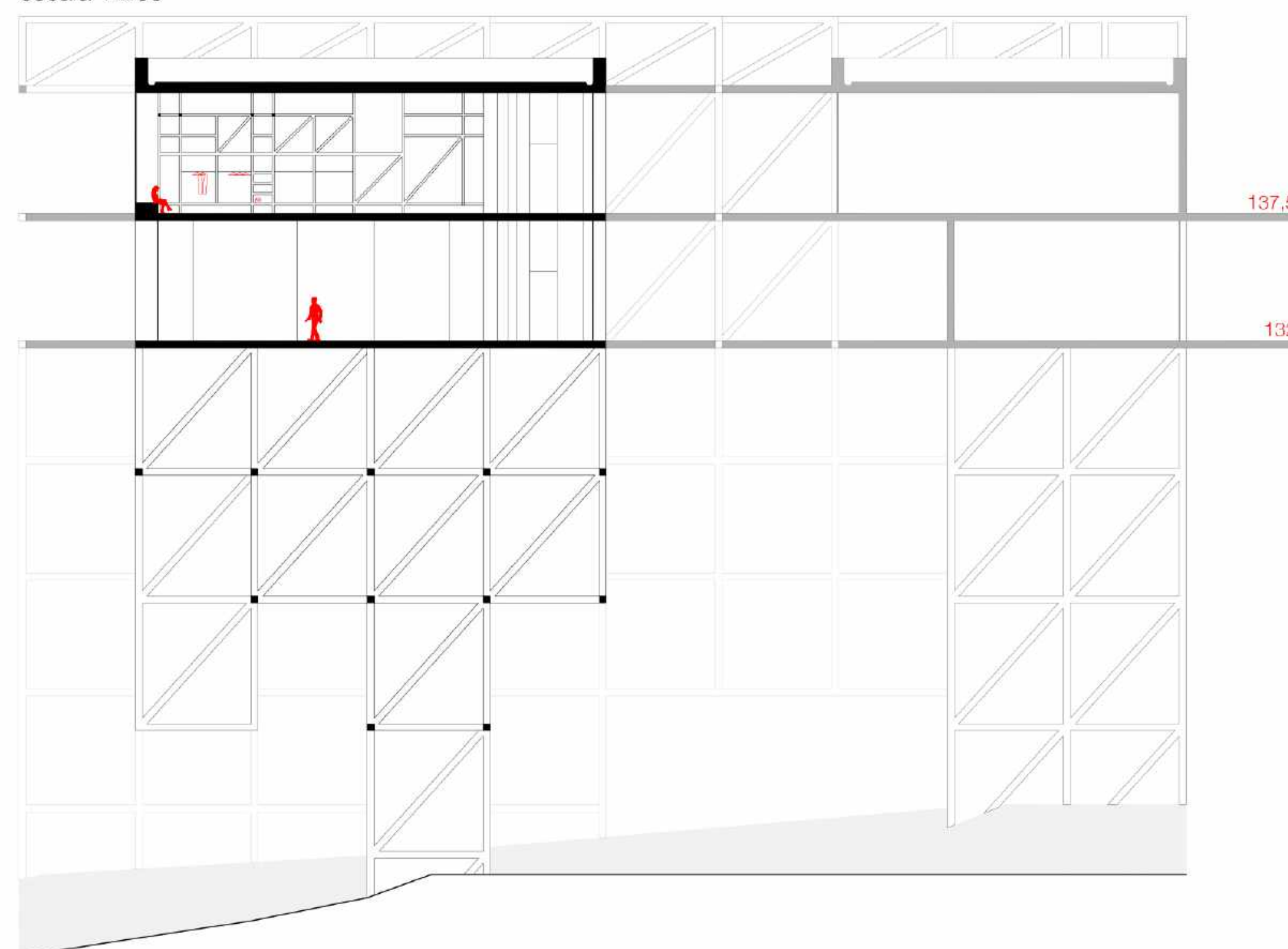
axonometria ilustrativa do auditório



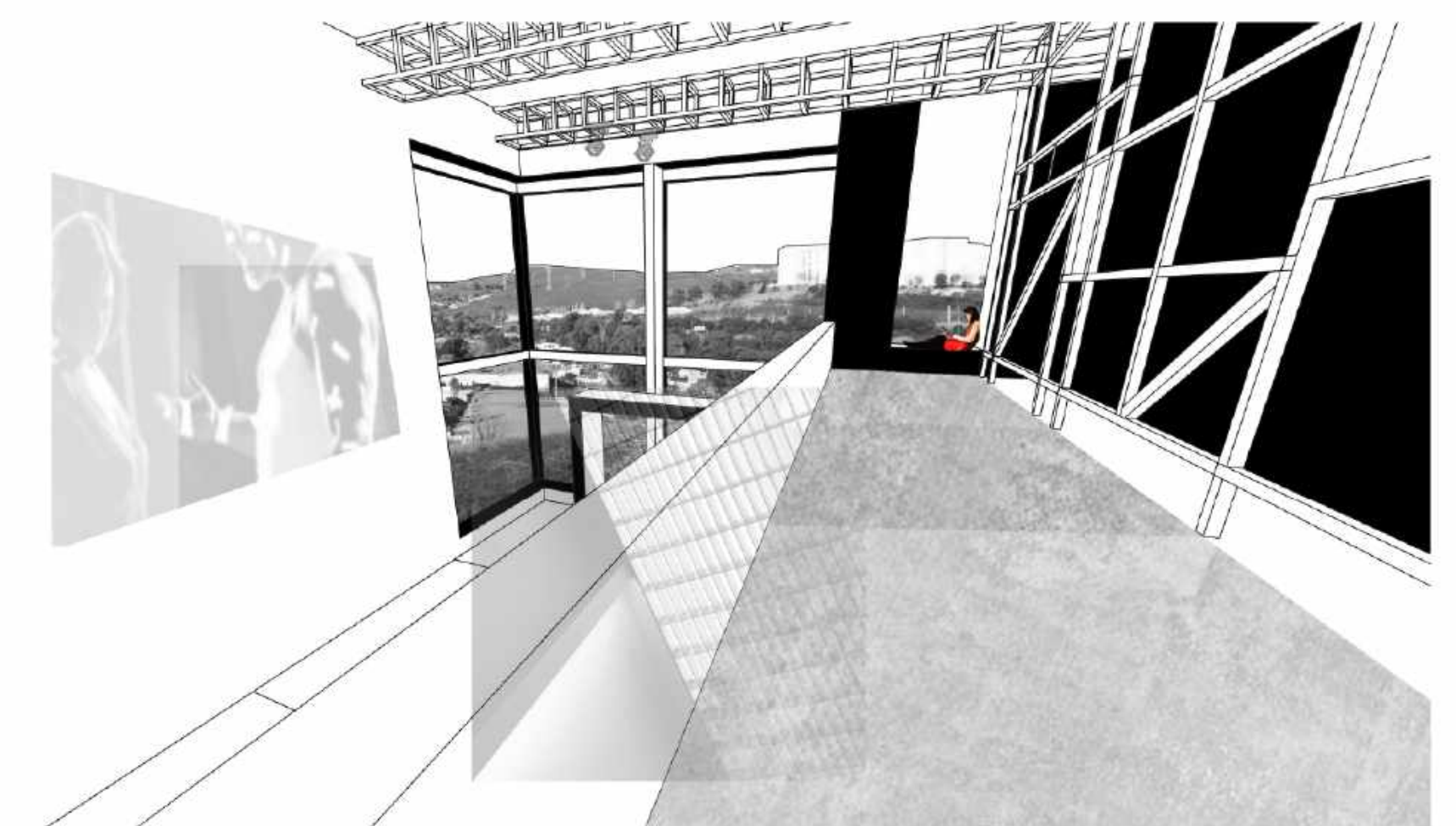
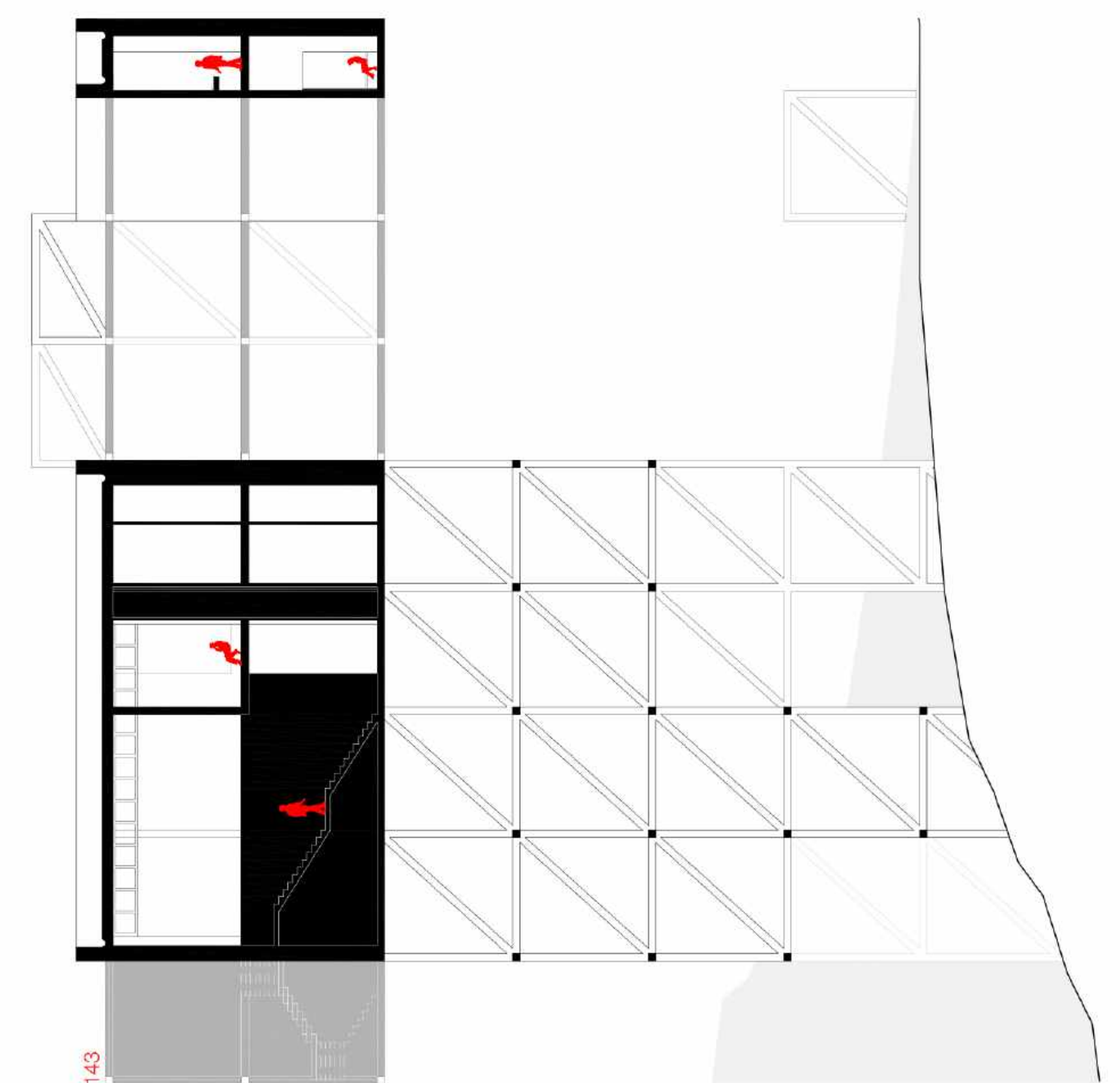
plantas P0 e P1
escala 1:200



corte
escala 1:200



corte
escala 1:200



ambientes ilustrativo

